



FIRSTECH FTI-STK1 Wrx Std Key Mt Installation Guide

[Home](#) » [FIRSTECH](#) » FIRSTECH FTI-STK1 Wrx Std Key Mt Installation Guide 

Contents

- 1 [FIRSTECH FTI-STK1 Wrx Std Key Mt](#)
- 2 [Ignition Switch Assembly](#)
- 3 [CARTRIDGE INSTALLATION](#)
- 4 [MODULE PROGRAMMING PROCEDURE](#)
- 5 [Documents / Resources](#)
 - 5.1 [References](#)
- 6 [Related Posts](#)



FIRSTECH FTI-STK1 Wrx Std Key Mt



FTI-STK1: Vehicle Preparation and Coverage Notes

Make	Model	Year	Instal I	CAN	IMM O	BC M	Clutch	I/O Changes
Subaru	WRX STD KEY MT (Canada)	2022-23	Type 5	20-Pin	B	DSD	Lt.Green	Green White/Blue

Vehicle Notes

The vehicle covered uses the BLADE-AL-SUB9 firmware and the following required accessories: Weblink Hub and ACC-RFID1. Update and activate the controller firmware. Follow the instructions for RFID programming before attempting to program the vehicle's BLADE module.

CAN

CAN connections (Type 5) are made to the 20-pin BCM adapter and require connecting the white connectors to the marker [D] in the illustration.

Immobilizer

IMMO type B requires connecting the black and white 2-pin connectors to the marker [C] in the illustration.

Lights

Parking lights are pre-cabled in the FTI-STK1 harness. Replace the green/white harness connector with the white/blue harness connector.

ACC-RFID1 (Required)

The SUB9 firmware does not provide immobilizer data, so an ACC-RFID1 is required for remote start.

Clutch (2nd Start)

The FTI-STK1 harness is pre-cabled with a 2nd START red/black wire (required in "TYPE 5"), connected to the 2nd position of the 10-pin connector of the ignition switch, located on the clutch pedal. Make the configuration changes listed below to enable output. Ensure this is necessary to avoid unnecessary cuts.

I/O Changes

CM7: The bridge 3 was moved to the START position. CMX: HCP #1, configuration [2] (2nd START).

Warnings

Warning 1: Program ACC-RFID1 before attempting to program the BLADE module in the vehicle.

Warning 2: Ensure all 2-pin connections, both used and unused, are connected to the main harness body.

FTI-STK1 – Installation and Configuration Notes

- **A:** Required Accessory
- **B:** Adapter Required
- **C:** Required Configuration (Type B IMMO)
- **D:** No Connection
- **E:** Connection Required

Function Coverage

Function	Status
Immobilizer Data	Available
Arm OEM Alarm	Available
Disarm OEM Alarm	Available
Door Lock	Available
Door Unlock	Available
Priority Unlock	Available
Trunk/Hatch Release	Available
Tach Output	Available
Door Status	Available
Trunk Status	Available
Brake Status	Available
E-Brake Status	Available
A/M Alarm Control from OEM Remote	Available
A/M RS Control from OEM Remote	Available
Autolight Control	Available

Jumper Settings

FT-DAS Required for manual transmission. Both Red & Red/White MUST be connected with higher current application.

CMX High Current Programmable (+) Output Channels

- HCP #1 – Parking Light
- HCP #2 – Accessory
- HCP #3 – Ignition

[2] 2ND START, [3] 2ND IGNITION, [4] 2ND ACCESSORY

Installation Guide

Cartridge Installation

1. Slide cartridge into unit. Notice button under LED.
2. Ready for Module Programming Procedure.

Module Programming Procedure

1. For this installation, the Weblink HUB is required.
2. Remove OEM key 1 from keychain.

3. Place all other keyfobs at least 1 foot away from the Weblink HUB. Failure to comply may result in damage to other keyfobs or interfere with the keyfob reading process.
4. Flash the module using the Weblink HUB. Follow the on-screen instructions to complete the keyfob reading process.
5. Using OEM key 1, turn key to ON position.
6. Wait, LED will turn solid BLUE for 2 seconds.
7. Turn key to OFF position.
8. Module Programming Procedure completed.

LED Programming Error Codes

- 1x RED = Cannot communicate with RFID or immobilizer data.
- 2x RED = No CAN activity. Check CAN cable connections.
- 3x RED = Ignition not detected. Check ignition and CAN cable connections.
- 4x RED = Required ignition output diode not detected.

FAQ

- **What is the purpose of ACC-RFID1?**

ACC-RFID1 is required because the SUB9 firmware does not provide immobilizer data, which is necessary for remote start.

- **Why is the Weblink HUB required?**

The Weblink HUB is needed for flashing the module and completing the keyfob reading process.

- **What should I do if the LED flashes red?**

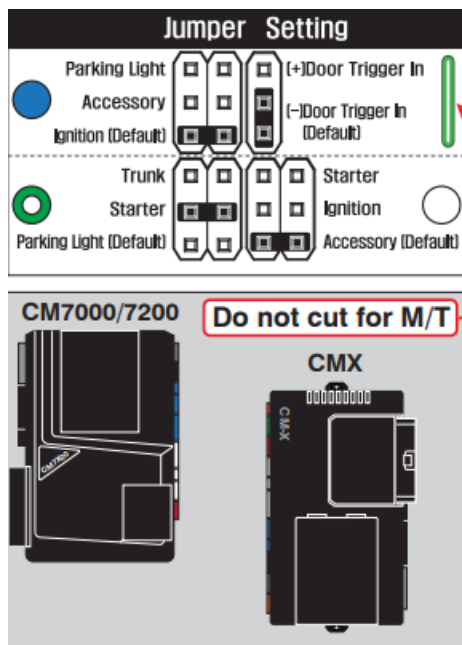
Refer to the LED Programming Error Codes section to diagnose the issue based on the number of red flashes.

- **How do I ensure proper connection of the harness?**

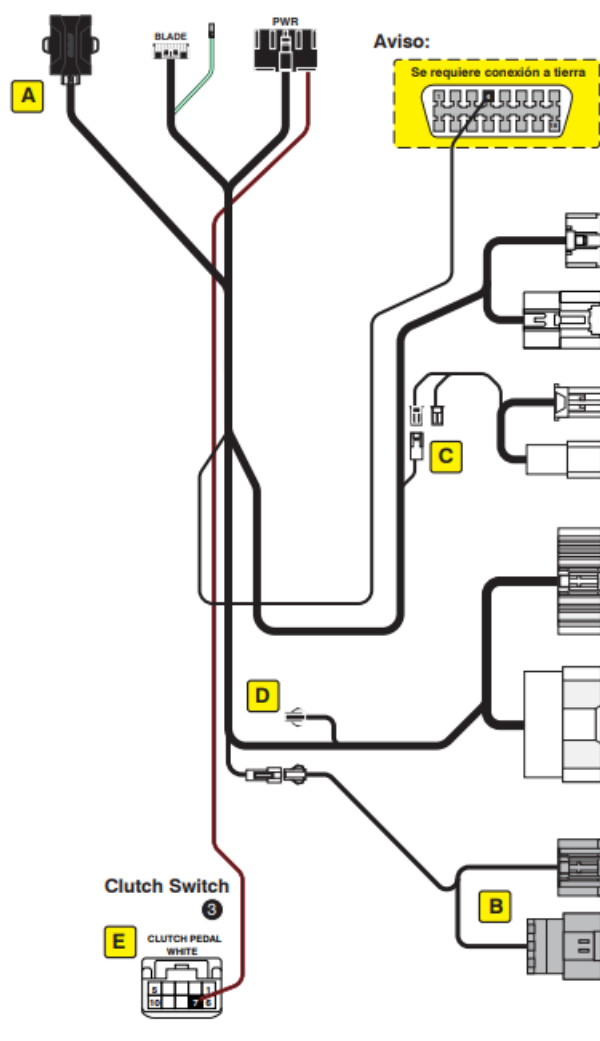
Ensure all 2-pin connections, both used and unused, are connected to the main harness body.

FTI-STK1:

- FT-DAS Required for manual transmission.
- BOTH Red & Red/White MUST be connected with high current application.

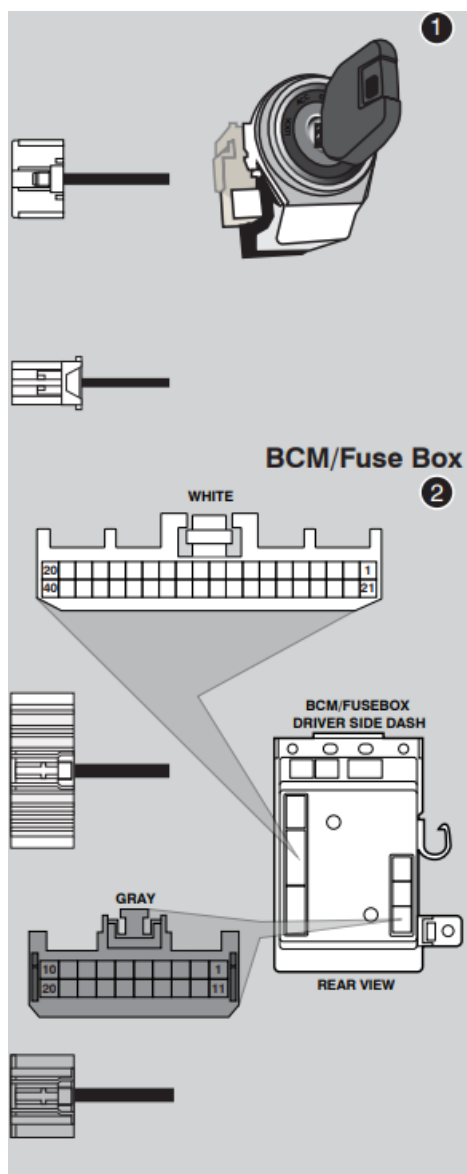


FTI-STK1 – AL-SUB9 – Type 5 2022-23 Subaru WRX STD KEY MT (CA)



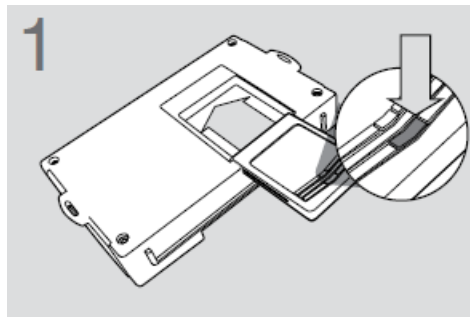


Ignition Switch Assembly



CARTRIDGE INSTALLATION

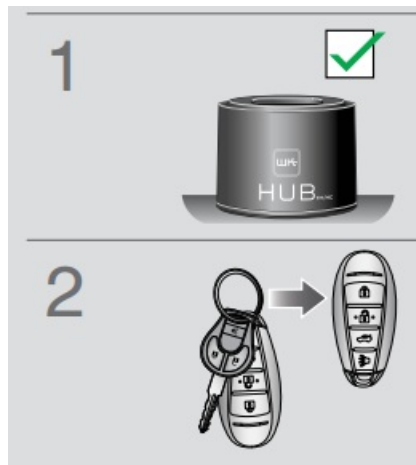
1. Slide cartridge into unit. Notice button under LED.



2. Ready for Module Programming Procedure.

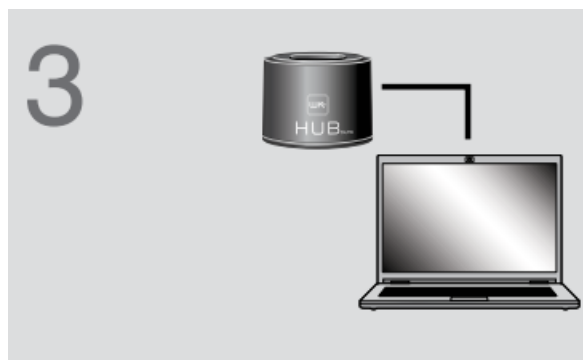
MODULE PROGRAMMING PROCEDURE

1. For this installation, the Weblink HUB is required.
2. Remove OEM key 1 from keychain.



3. Place all other keyfobs at least 1 foot away from the Weblink HUB. Failure to comply may result in damage to other keyfobs or interfere with the keyfob reading process.

Flash the module using the Weblink HUB. Follow the on screen instructions to complete the keyfob reading process.

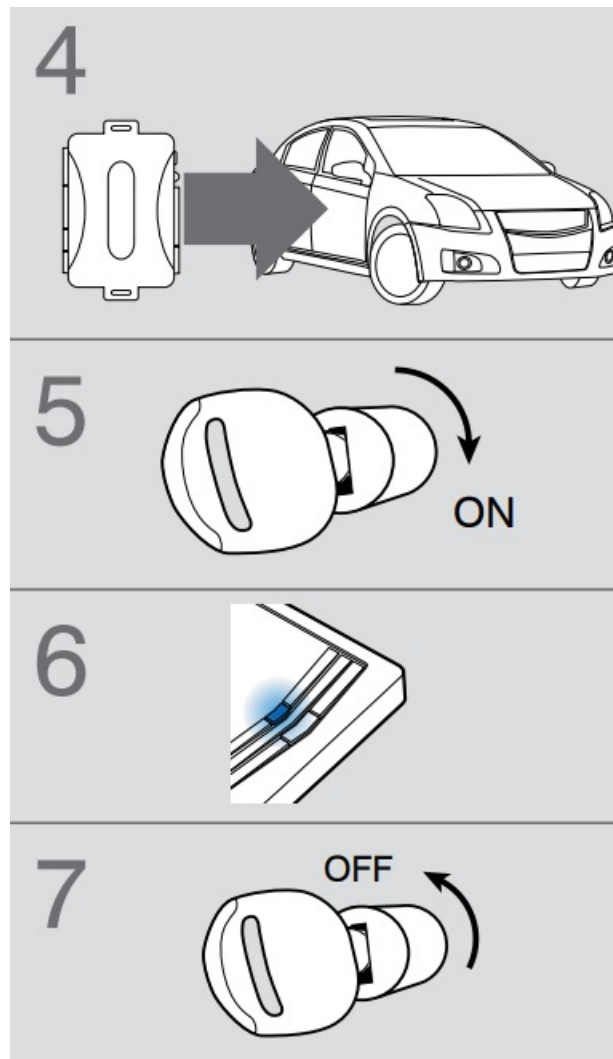


4. **WARNING:**

Do not press the module programming button.

Connect power first. Connect module to vehicle.

5. Using OEM key 1, turn key to ON position.
6. Wait, LED will turn solid BLUE for 2 second .
7. Turn key to OFF position.
8. Module Programming Procedure completed.



WWW.IDATALINK.COM

Automotive Data Solutions Inc. © 2020

Documents / Resources

	<p>FIRSTTECH FTI-STK1 Wrx Std Key Mt [pdf] Installation Guide SUB9, AL-SUB9, FTI-STK1 Wrx Std Key Mt, FTI-STK1, Wrx Std Key Mt, Std Key Mt, Key Mt, Mt</p>
	<p>FIRSTTECH FTI-STK1 Wrx Std Key Mt [pdf] Installation Guide DL-SUB9, BLADE-AL-SUB9, ACC-RFID1, FTI-STK1 Wrx Std Key Mt, FTI-STK1, Wrx Std Key Mt, Std Key Mt, Mt</p>
	<p>FIRSTTECH FTI-STK1 Wrx Std Key Mt [pdf] Installation Guide Type 6, Type 5, FTI-STK1 Wrx Std Key Mt, FTI-STK1, Wrx Std Key Mt, Std Key Mt, Key Mt, Mt</p>

References

- [User Manual](#)

[Manuals+](#), [Privacy Policy](#)

This website is an independent publication and is neither affiliated with nor endorsed by any of the trademark owners. The "Bluetooth®" word mark and logos are registered trademarks owned by Bluetooth SIG, Inc. The "Wi-Fi®" word mark and logos are registered trademarks owned by the Wi-Fi Alliance. Any use of these marks on this website does not imply any affiliation with or endorsement.