

FIRSTECH
FTI-HDP8
Vehicle
Coverage and
Preparation



FIRSTECH FTI-HDP8 Vehicle Coverage and Preparation Installation Guide

[Home](#) » [FIRSTECH](#) » FIRSTECH FTI-HDP8 Vehicle Coverage and Preparation Installation Guide 

Contents

- [1 FIRSTECH FTI-HDP8 Vehicle Coverage and Preparation](#)
- [2 Product Information](#)
- [3 Before Installing](#)
- [4 Installation And Configuration Notes](#)
- [5 CARTRIDGE INSTALLATION](#)
- [6 MODULE PROGRAMMING PROCEDURE](#)
- [7 CONTACT](#)
- [8 Documents / Resources](#)
 - [8.1 References](#)



FIRSTECH FTI-HDP8 Vehicle Coverage and Preparation



Product Information

FTI-HDP8: Vehicle Coverage and Preparation Notes

- **Make**
 - **DL-HA6:** Acura
- **Model**
 - RDX PTS AT
- **Year**
 - 2019-24
- **Install**
 - Type 1
- **CAN**
 - Blue
- **Lights**
 - **Park / Auto:** gray/blue

- **BCM**
 - AFB
- **Clutch**
 - N/A
- **S-NET Data**
 - **BCM Gray 40-pin:** Yellow

Before Installing

Firmware:

This installation requires BLADE-AL(DL)-HA6 firmware, flash module and update the controller firmware before installing.

Lights:

This kit includes a pre-terminated harness for the purpose of connecting the parking lights and clutch wire (when required). Use of the included harness requires modification of the gray I/O connector of the control module, removal of the existing parking light and status wires (the negative start wire also, when clutch handling is required), and replacing them with wires from the included harness. The required connections are located in the gray 28-pin connector, parking lights (pin #11), auto-lights (pin #10)

S-Net:

- Gathering S-NET data requires a manual connection to be made at the Gray 40-pin connector of the BCM, the S-NET data wire is located at pin #35 of the connector.

Installation And Configuration Notes

FTI-HDP8: Installation and Configuration Notes

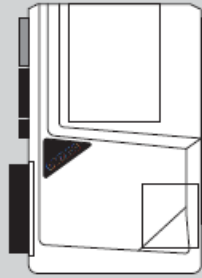
- **A** REQUIRED CONNECTION
- **B** REQUIRED CONNECTIONS (SEE NOTES REGARDING REQUIRED MODIFICATION)
- **C** REQUIRED CONNECTIONS
- **D** NOT REQUIRED

Jumper Setting

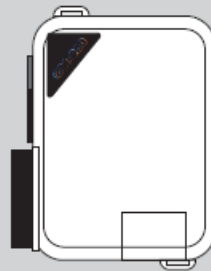
- FT-DAS Required for manual transmission.
- BOTH Red & Red/White MUST be connected with high current application.

Jumper Setting			
Parking Light	<input type="checkbox"/>	<input type="checkbox"/>	(+)Door Trigger In
Accessory	<input type="checkbox"/>	<input type="checkbox"/>	(-)Door Trigger In (Default)
Ignition (Default)	<input type="checkbox"/>	<input type="checkbox"/>	
Trunk	<input type="checkbox"/>	<input type="checkbox"/>	Starter
Starter	<input type="checkbox"/>	<input type="checkbox"/>	Ignition
Parking Light (Default)	<input type="checkbox"/>	<input type="checkbox"/>	Accessory (Default)

CM7000/7200



Cut loop for A/T



CM-900S/900AS

CM900AS/900S Jumper



START
ACC
IGN1

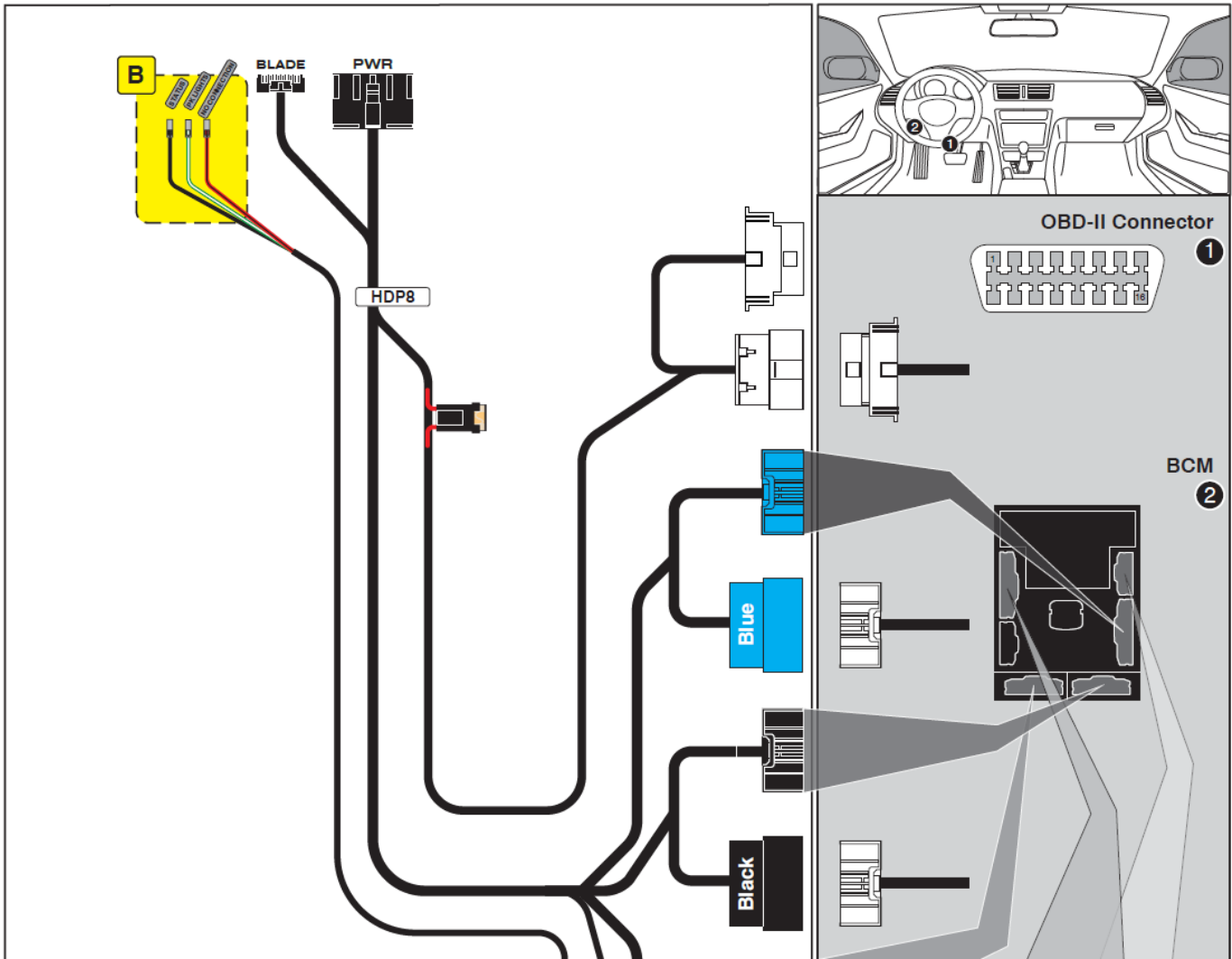
FEATURE COVERAGE



FEATURE COVERAGE																			
IMMOBILIZER DATA																			
A/M RS CONTROL																			
DOOR LOCK																			
DOOR UNLOCK																			
ARM OEM ALARM																			
DISARM OEM ALARM																			
TRUNK/HATCH RELEASE																			
DOOR STATUS																			
TRUNK STATUS																			
HOOD STATUS																			
BRAKE STATUS																			
E-BRAKE STATUS																			
TACH OUTPUT																			
AUTOLIGHT CTRL																			
PARKING LIGHTS																			

FTI-HDP8 – DL-HA6 – Type 1

2019-24 Acura RDX PTS AT



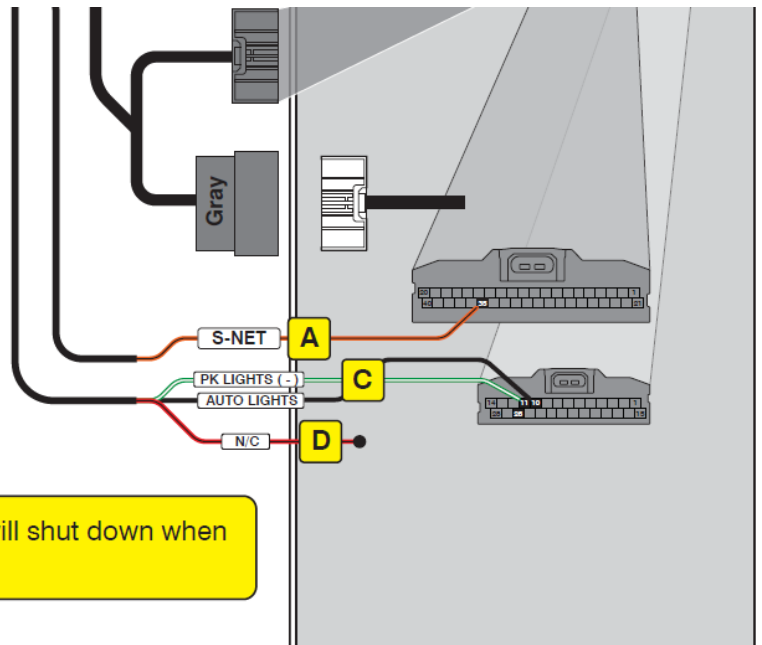
LED Programming Error Codes

Module LED flashing RED during programming
1x - No CAN activity, check connectors/CAN voltage
2x - Klon data error, confirm S-NET connection
3x - No S-NET data, confirm connection
4x - No VIN, confirm CAN connections and vehicle entered when flashing

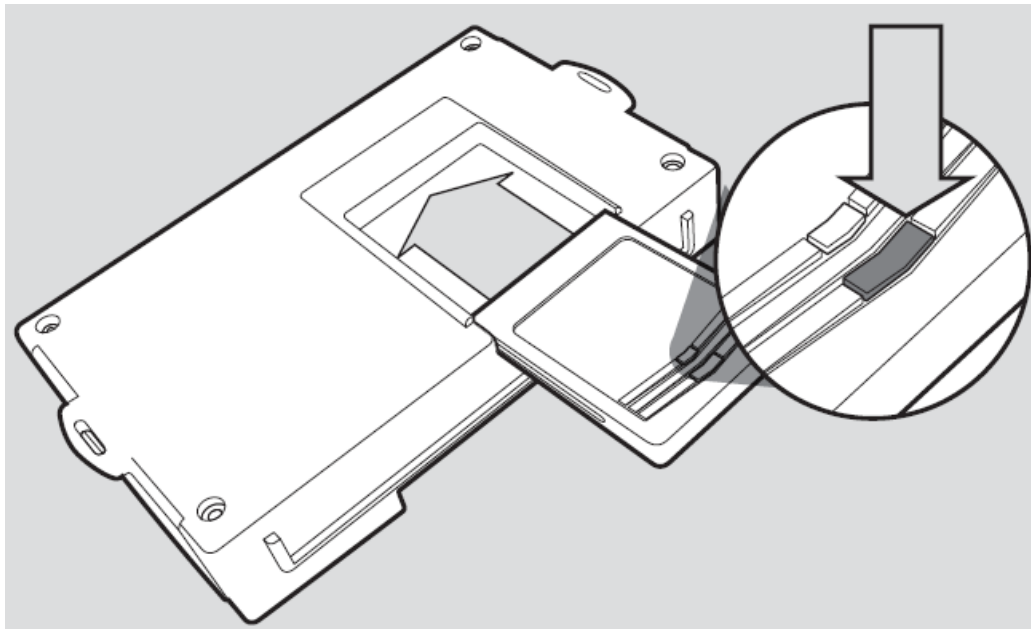
After Klon:

Solid red LED - redo part 1 of Klon
2x - Klon data is wrong, confirm data connection, start over from the beginning

Takeover not supported: Vehicle engine will shut down when doors are opened.

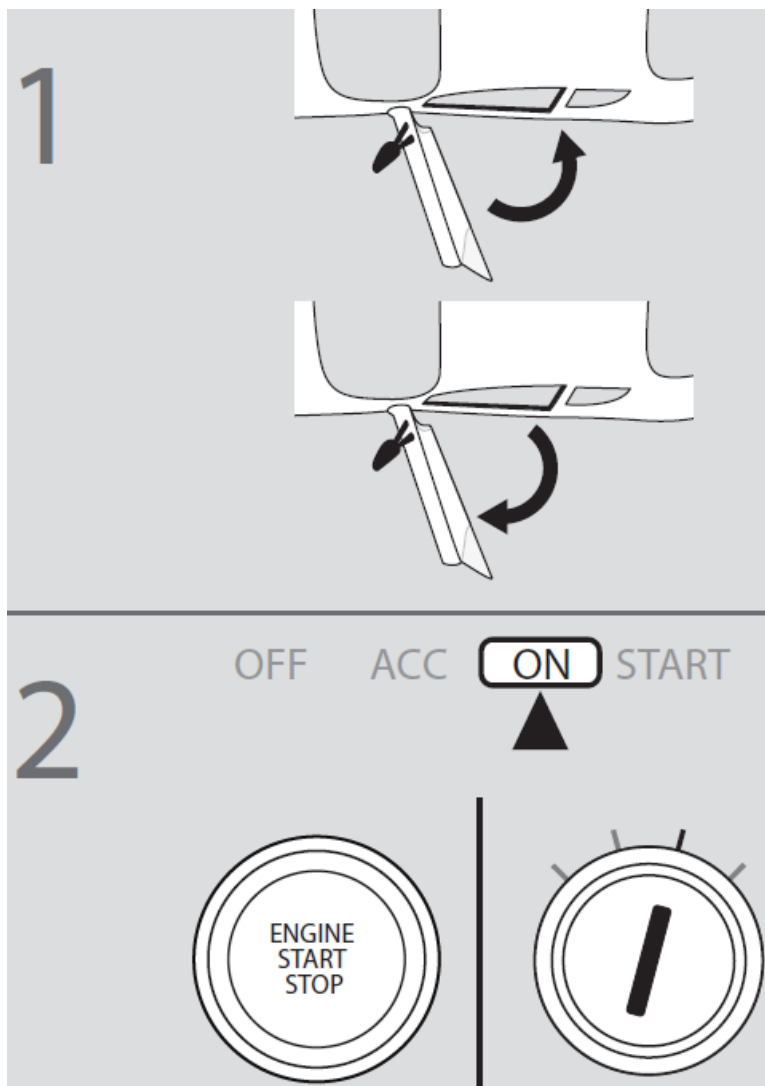


CARTRIDGE INSTALLATION



1. Slide cartridge into unit. Notice button under LED.
2. Ready for Module Programming Procedure.

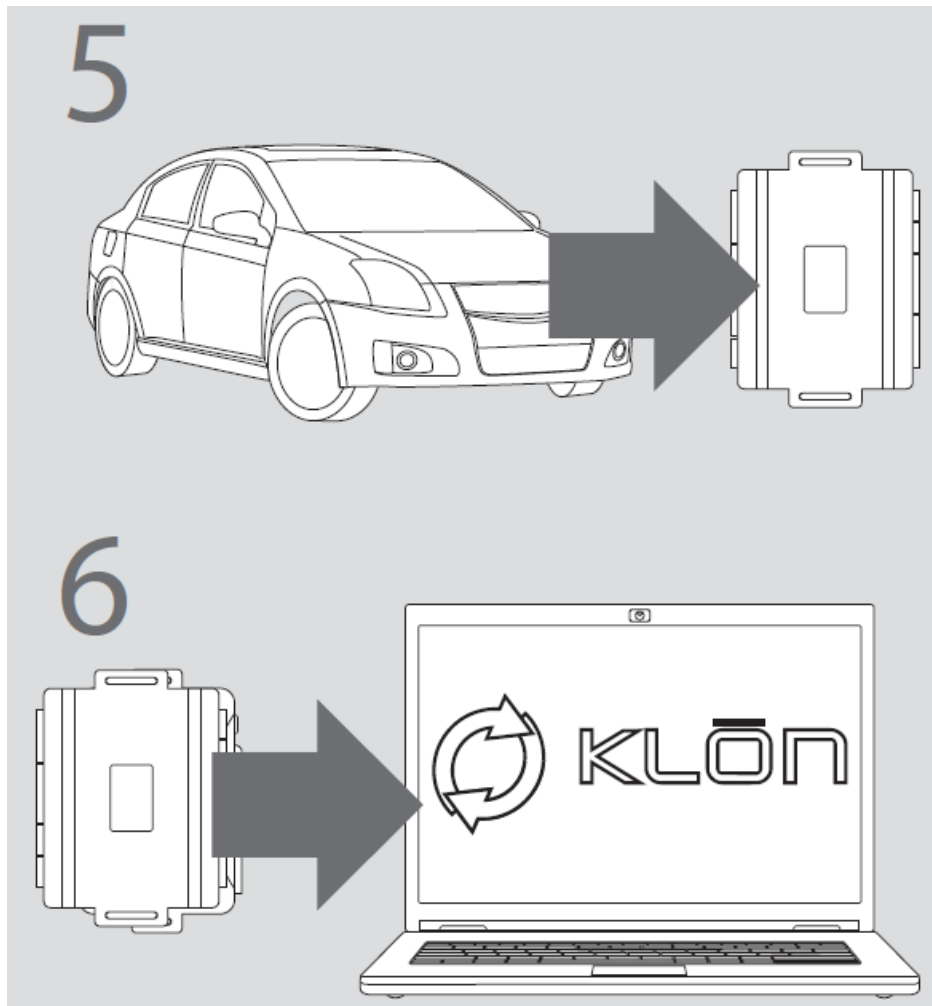
MODULE PROGRAMMING PROCEDURE



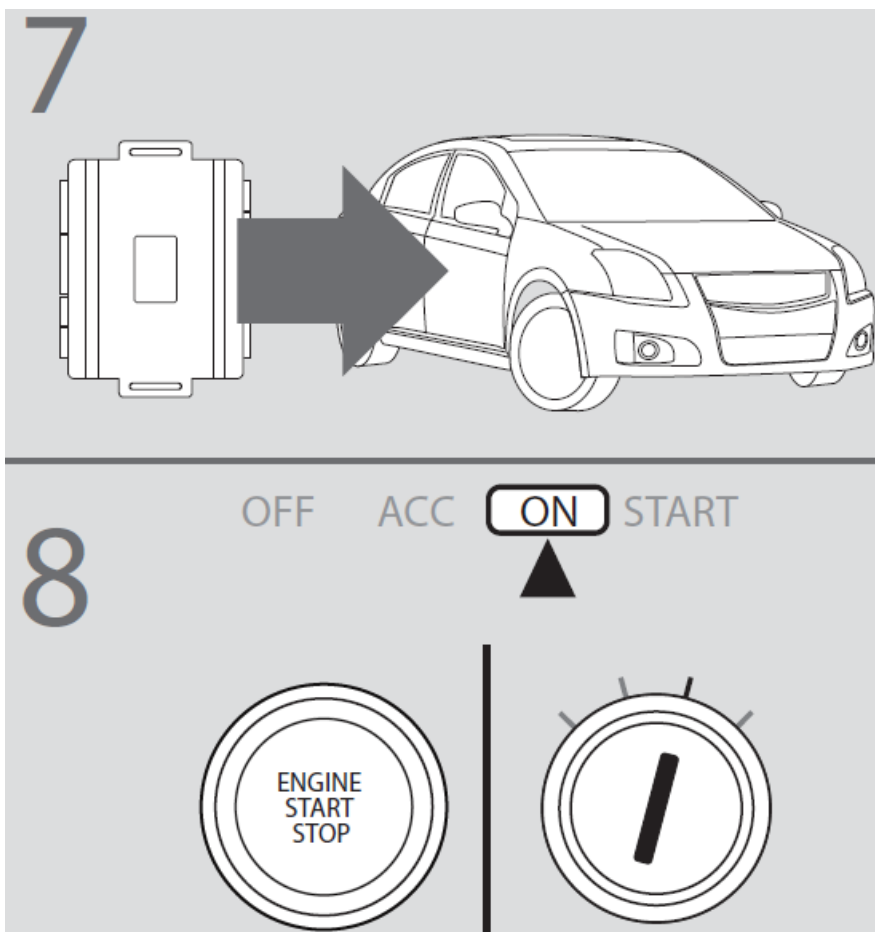
1. Close driver door.
 - Re-open driver door to wake up data bus.
2. Turn ignition to ON position.



3. Wait, LED will flash BLUE rapidly.
4. Turn ignition to OFF position.



5. **WARNING:** Disconnect power last. Disconnect RS from vehicle.
6. Connect RS to computer and proceed with extended programming.



7. **WARNING:** Do not press RS programming button. Connect power first. Connect RS to vehicle.
8. Turn ignition to ON position.



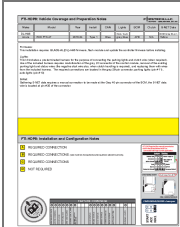
9. Wait, LED will turn solid BLUE for 2 seconds.
10. Turn ignition to OFF position.
11. Press UNLOCK on the OEM remote.
 - **INFO:** If the vehicle is equipped with a power liftgate: Open and close the power liftgate with the OEM keyfob.
12. Module Programming Procedure completed.

CONTACT

- WWW.IDATALINK.COM
- **SUPPORT:** 1 [888-820-3690](tel:888-820-3690), EXT. 203

Automotive Data Solutions Inc. © 2020

Documents / Resources



[FIRSTECH FTI-HDP8 Vehicle Coverage and Preparation \[pdf\]](#) Installation Guide
FTI-HDP8 Vehicle Coverage and Preparation, FTI-HDP8, Vehicle Coverage and Preparation, C
overage and Preparation, and Preparation, Preparation

References

- [ⓘ iDataLink - Home](#)
- [User Manual](#)

[Manuals+](#), [Privacy Policy](#)

This website is an independent publication and is neither affiliated with nor endorsed by any of the trademark owners. The "Bluetooth®" word mark and logos are registered trademarks owned by Bluetooth SIG, Inc. The "Wi-Fi®" word mark and logos are registered trademarks owned by the Wi-Fi Alliance. Any use of these marks on this website does not imply any affiliation with or endorsement.