

FIRSTECH
Firstech FTI-HDP7
Woofer Electronics



Firstech FTI-HDP7 Woofer Electronics Installation Guide

[Home](#) » [FIRSTECH](#) » Firstech FTI-HDP7 Woofer Electronics Installation Guide 

Contents

- [1 Firstech FTI-HDP7 Woofer Electronics](#)
- [2 Product Usage Instructions](#)
- [3 FTI-HDP7: Installation and Configuration Notes](#)
- [4 CARTRIDGE INSTALLATION](#)
- [5 Documents / Resources](#)
 - [5.1 References](#)
- [6 Related Posts](#)



Firstech FTI-HDP7 Woofer Electronics



Specifications

- **Make:** DL-HA6 Honda
- **Model:** Ridgeline PTS AT
- **Year Install:** 2017-24
- **Type:** 1 CAN PCU
- **Lights:** Park / Auto Type B PCU AGB
- **Clutch I/O Changes:** Green White/Blue

Product Usage Instructions

Installation Requirements

This installation requires BLADE-AL(DL)-HA6 firmware, flash module, and update the controller firmware before installing.

Vehicle PCU Locations:

Vehicle PCU locations differ by model. Note specific locations according to the component locator. The 36-pin connector at the Smart PCU can be either lt. brown or gray.

Lights Connection

Parking lights connections are provided by the included headlight switch adapter. Ensure proper configuration to avoid damaging the vehicle's headlight switch. Refer to detailed illustration on wiring page for specific configuration.

Headlight Switch Adapter

The FTI-HDP7 kit includes a headlight switch adapter with pre-terminated wires that must be inserted into the gray I/O connector of a compatible Firstech control module. Replace the pk light and status wires from the I/O connector.

Configuration Confirmation

To avoid possible damage to the vehicle headlight switch, confirm proper configuration of the included adapter.

FAQ

LED Programming Error Codes

- **1x** – CAN error, check connectors
- **2x** – Klon error, check connections, retry programming. If error persists, perform a clearing flash then retry programming with all doors closed.
- **3x** – Immobilizer error, check connectors, confirm car starts
- **4x** – VIN error, check connectors, reflash using vehicle entry

Module Programming Procedure

1. Close driver door.
2. Re-open driver door to wake up data bus. Turn ignition to ON position.
3. **WARNING:** Do not press RS programming button. Connect power first. Connect RS to vehicle.

FTI-HDP7: Vehicle Coverage and Preparation Notes

Make	Model	Year	Install	CAN	Lights	PCU	Clutch	I/O Changes
DL-HA6 Honda	Ridgeline PTS AT	2017-24	Type 1	PCU	Park / Auto Type B	AGB	N/A	Green White/Blue N/A

This installation requires BLADE-AL(DL)-HA6 firmware, flash module and update the controller firmware before installing.

PCU:

Vehicle PCU locations differ by model, please note the specific locations according to the component locator, and also note that the 36-pin connector at the Smart PCU can be either lt. brown or gray.

Lights:

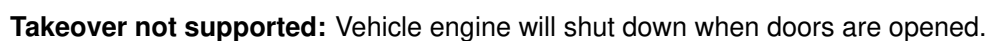
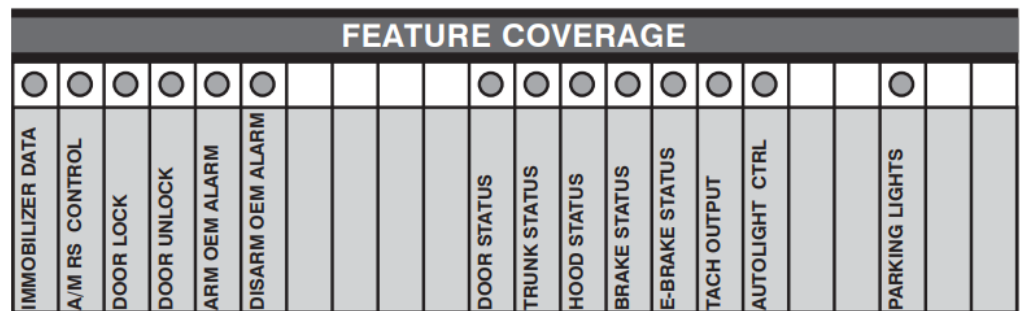
(–) Parking lights connections are provided by the included headlight switch adapter, please ensure proper configuration to avoid damaging the vehicle's headlight switch. See detailed illustration on wiring page for specific configuration required.

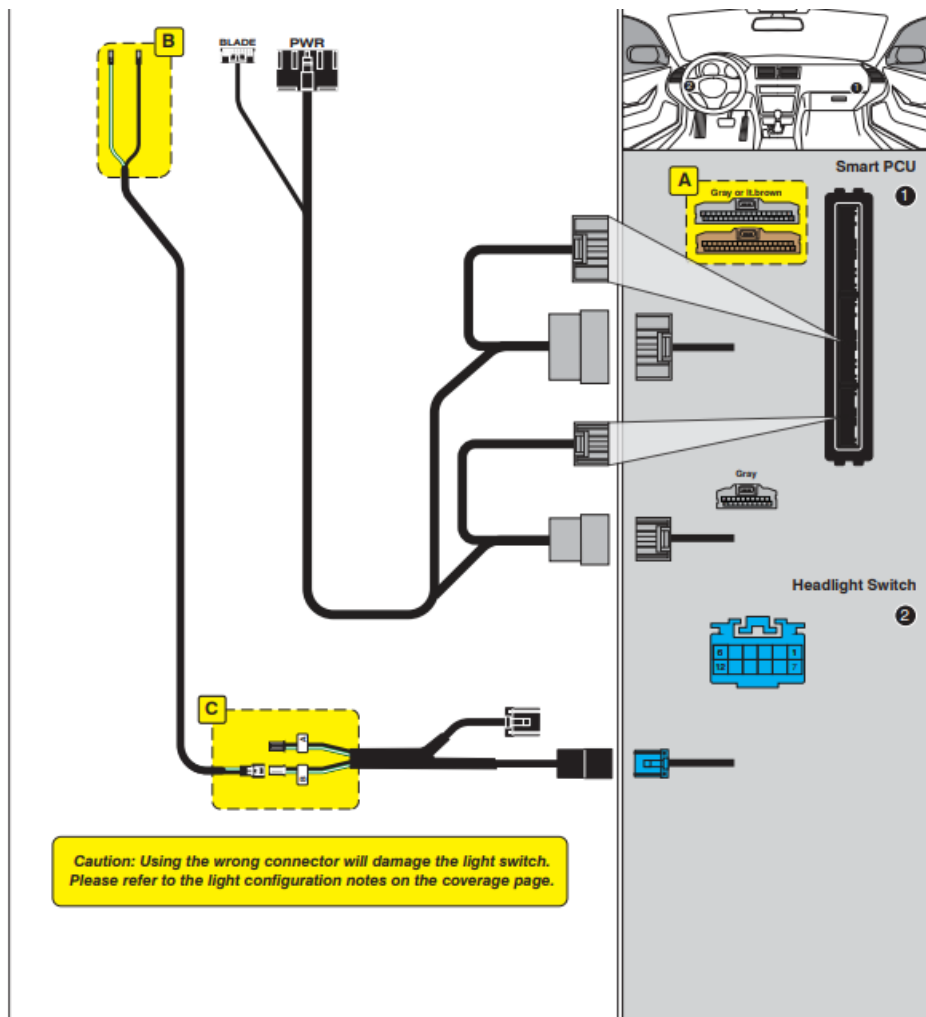
The FTI-HDP7 kit includes a headlight switch adapter equipped with pre-terminated wires that must be inserted into the gray I/O connector of a compatible Firstech control module. Replace the pk light and status wires from the I/O connector.

To avoid possible damage to the vehicle headlight switch, please confirm proper configuration of the included adapter.

FTI-HDP7: Installation and Configuration Notes

- A REQUIRED CONNECTIONS (COLORS VARY)
- B REQUIRED CONNECTIONS – SEE NOTES
- C REQUIRED CONFIGURATION





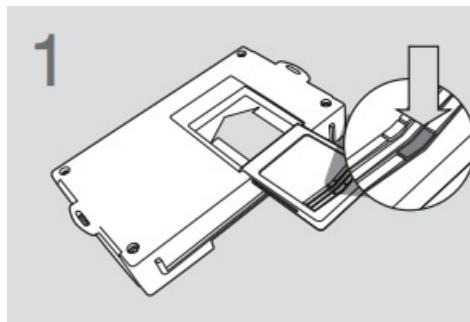
LED Programming Error Codes

Module LED flashing RED during programming

- 1x – CAN error, check connectors
- 2x – Klon error, check connections, retry programming if error persists, perform a clearing flash then retry programming with all doors closed
- 3x – Immobilizer error, check connectors, confirm car starts
- 4x – VIN error, check connectors, re flash using vehicle entry

CARTRIDGE INSTALLATION

1. Slide cartridge into unit. Notice button under LED.



2. Ready for Module Programming Procedure.

MODULE PROGRAMMING PROCEDURE

1. Close driver door.

Re-open driver door to wake up data bus.

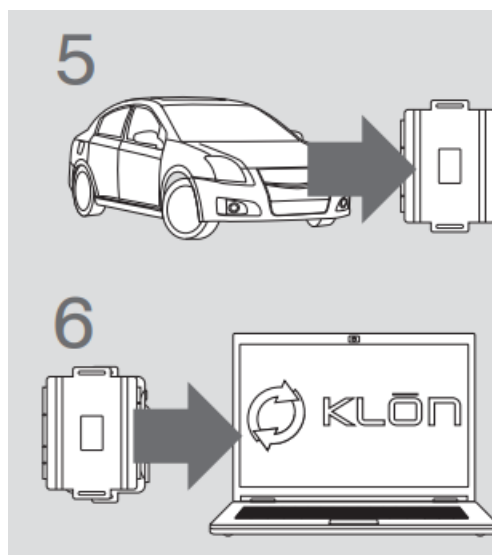
2. Turn ignition to ON position.
3. Wait, LED will flash BLUE rapidly.
4. Turn ignition to OFF position.



5. **WARNING:**

Disconnect power last. Disconnect RS from vehicle.

6. Connect RS to computer and proceed with extended programming.



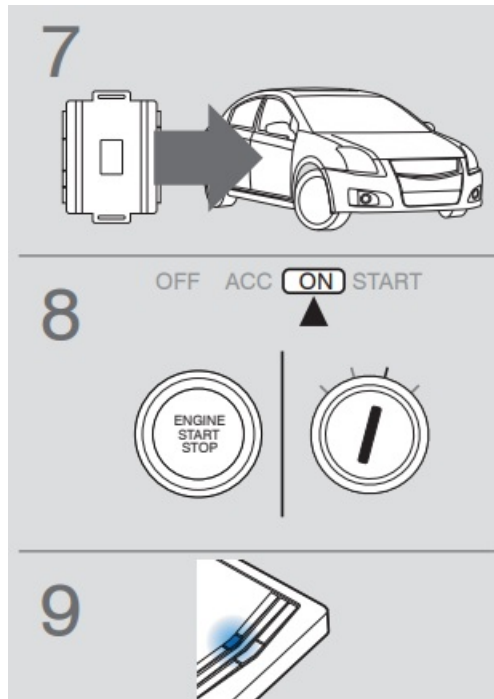
7. **WARNING:** Do not press RS programming button.

Connect power first.

Connect RS to vehicle.

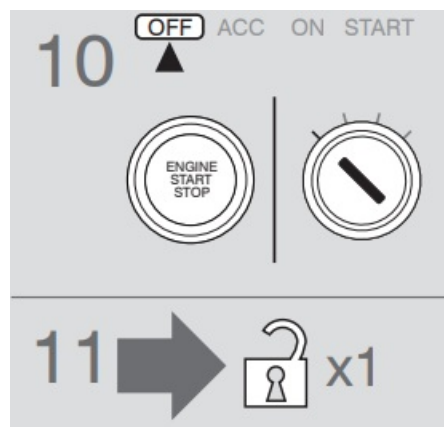
8. Turn ignition to ON position.

9. Wait, LED will turn solid BLUE for 2 seconds.



10. Turn ignition to OFF position.

11. Press UNLOCK on the OEM remote.



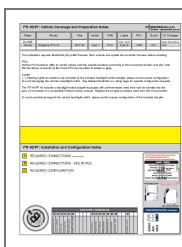
If the vehicle is equipped with a power liftgate: Open and close the power liftgate with the OEM keyfob.

12. Module Programming Procedure completed.

WWW.IDATALINK.COM

Automotive Data Solutions Inc. © 2020

Documents / Resources



[Firstech FTI-HDP7 Woofer Electronics](#) [pdf] Installation Guide
FTI-HDP7 Woofer Electronics, FTI-HDP7, Woofer Electronics, Electronics

References

- [!\[\]\(cd3e54d951a9fb854f48e4697cf550f9_img.jpg\) iDatalink - Home](#)
- [User Manual](#)

[Manuals+](#), [Privacy Policy](#)

This website is an independent publication and is neither affiliated with nor endorsed by any of the trademark owners. The "Bluetooth®" word mark and logos are registered trademarks owned by Bluetooth SIG, Inc. The "Wi-Fi®" word mark and logos are registered trademarks owned by the Wi-Fi Alliance. Any use of these marks on this website does not imply any affiliation with or endorsement.