



FireAngel SM-SN-1 Multi Sensor Smoke Alarm User Guide

[Home](#) » [FireAngel](#) » FireAngel SM-SN-1 Multi Sensor Smoke Alarm User Guide 

Contents

- [1 FireAngel SM-SN-1 Multi Sensor Smoke Alarm](#)
- [2 Fire & Carbon Monoxide Product](#)
- [3 MAINS POWERED](#)
- [4 BATTERY POWERED](#)
- [5 Specifications:](#)
- [6 Product Usage Instructions:](#)
 - [6.1 Mains Powered Devices:](#)
 - [6.2 Battery Powered Devices:](#)
 - [6.3 Wireless Interlink:](#)
 - [6.4 Sensors:](#)
 - [6.5 Remote Monitoring:](#)
- [7 FAQ:](#)
 - [7.1 Q: How long does the battery last in the battery-powered devices?](#)
 - [7.2 Q: Can I connect multiple devices wirelessly?](#)
- [8 Documents / Resources](#)
 - [8.1 References](#)
- [9 Related Posts](#)

FireAngel SM-SN-1 Multi Sensor Smoke Alarm

USER GUIDE

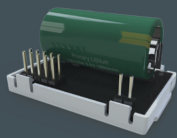
Fire & Carbon Monoxide Product

- Smoke Alarms
- Heat Alarms Carbon
- Monoxide Alarms (CO)



Create Wireless Networks:

Enables flexible wireless interlink for multiple devices with hybrid network capability



FS1521W2-T
Smart RF Module

[learn more >](#)



Damp and Mould Sensing

Environmental insights with FireAngel's innovative solutions suitable for all UK homes



Temperature & humidity
sensors for homes

[learn more >](#)



For Private Landlords:

Enable remote monitoring, real-time status updates and view instant diagnostics reports



FS1580W2-T
Spec Connected Gateway

[learn more >](#)



For Social Housing:

Enable remote monitoring with environmental insights (temperature and humidity)



FS2550W2ZB
Home Environment Gateway

[learn more >](#)

Get in touch

MAINS POWERED

Grade D1 Mains + 10 Year Sealed Lithium Battery Backup

SM-SN-1

Multi-Sensor Smoke Alarm



HM-SN-1

Kitchen Heat Alarm



Grade D2 Mains + 9V Battery Backup

*(For wireless interlink fit the RF interlink base RF-BW-T)

SW1-PF-T *

Optical Smoke Alarm



HW1-PF-T *

Kitchen Heat Alarm



CW1-PF-T *

CO Alarm



BATTERY POWERED

Grade F1 10 Year Sealed Battery

FS2126-T

Multi-Sensor Smoke Alarm



FS1226-T

Kitchen Heat Alarm



ST-622T

Standalone Multi-Sensor Smoke Alarm



Battery Powered Carbon Monoxide Alarms

FS1326-T

Wireless Interlink 10 Year CO Alarm



FA3820-EUX10

10 Year CO Alarm



FA3313-EUX10

CO Alarm with 1 Year Replaceable Batteries



FA3322-EUX10

10 Year Digital Display CO Alarm



FA3328-EUT

10 Year Sync-It™ (NFC technology) CO Alarm



Specifications:

- Product Types: Smoke Alarms, Heat Alarms, Carbon Monoxide Alarms

- Power Sources: Mains Powered (Grade D1/D2), Battery Powered (Grade F1)
- Interlink Capability: Wireless Interlink for multiple devices
- Network Capability: Hybrid network with Smart RF Modules
- Sensors: Temperature, Humidity, Damp, Mould
- Battery Backup: 10-Year Sealed Lithium Battery Backup (Mains Powered)

Product Usage Instructions:

Mains Powered Devices:

For Grade D1 and D2 mains powered devices, ensure proper installation with a qualified electrician. Use the specified batteries for backup.

Battery Powered Devices:

For Grade F1 battery-powered devices, install the 10-year sealed battery as instructed. Check and replace batteries as necessary.

Wireless Interlink:

To create wireless networks, use the Smart RF Modules provided. Follow the user manual to set up wireless interlink for multiple devices.

Sensors:

Utilize the temperature, humidity, damp, and mould sensors to monitor environmental conditions in your home. Follow guidelines to ensure accurate readings.

Remote Monitoring:

For private landlords and social housing, enable remote monitoring features using the specified gateways. Stay updated with real-time status reports and diagnostics.

FAQ:

Q: How long does the battery last in the battery-powered devices?

A: The Grade F1 battery-powered devices come with a 10-year sealed battery for long-lasting performance. Regularly check and replace batteries as needed.

Q: Can I connect multiple devices wirelessly?

A: Yes, you can create wireless networks and interlink multiple devices using the Smart RF Modules provided. Follow the instructions for seamless connectivity.

Documents / Resources



[FireAngel SM-SN-1 Multi Sensor Smoke Alarm](#) [pdf] User Guide
SM-SN-1, HM-SN-1, SW1-PF-T, HW1-PF-T, CW1-PF-T, FS2126-T, FS1226-T, ST-622T, FS1326-T, FA3820EUX10, FA3313EUX10, FA3322EUX10, FA3328EUT, SM-SN-1 Multi Sensor Smoke Alarm, SM-SN-1, Multi Sensor Smoke Alarm, Sensor Smoke Alarm, Smoke Alarm, Alarm

References

- [User Manual](#)

[Manuals+](#), [Privacy Policy](#)

This website is an independent publication and is neither affiliated with nor endorsed by any of the trademark owners. The "Bluetooth®" word mark and logos are registered trademarks owned by Bluetooth SIG, Inc. The "Wi-Fi®" word mark and logos are registered trademarks owned by the Wi-Fi Alliance. Any use of these marks on this website does not imply any affiliation with or endorsement.