



## finder 72.A1 Float Level Switch Instructions

[Home](#) » [finder](#) » finder 72.A1 Float Level Switch Instructions 

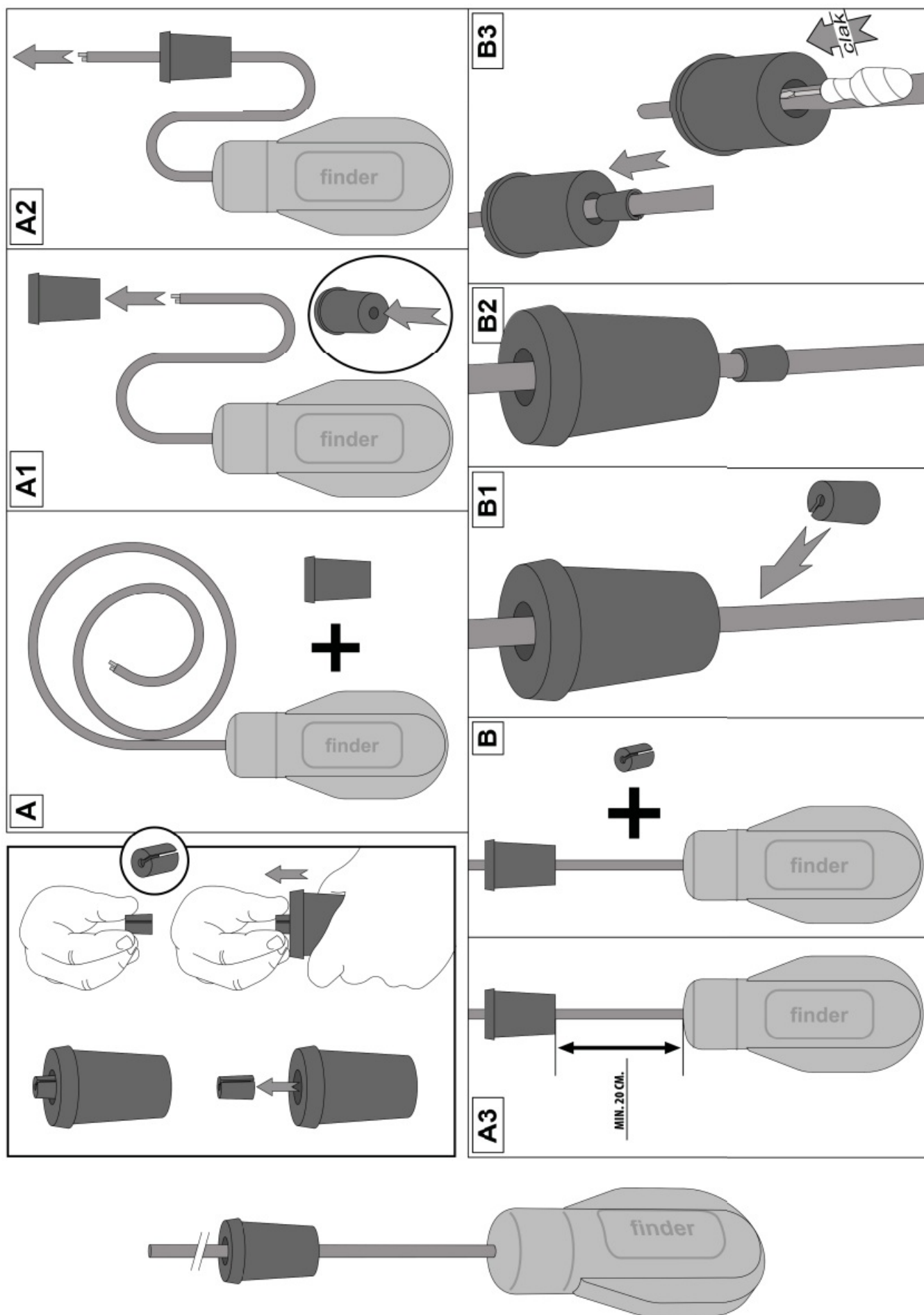


### Contents

- [1 72.A1 Float Level Switch](#)
- [2 TECHNICAL FEATURES](#)
- [3 TERMINAL CONNECTIONS](#)
- [4 Documents / Resources](#)
- [5 Related Posts](#)

72.A1.1.000.xx01 = H05 RN-F  
72.A1.1.000.xx02 = WRAS





**NOTES:** DO NOT TAMPER WITH THE FLOAT SWITCH. THE NON RESPECT OF THE FOLLOWING POINTS WILL AUTOMATICALLY CAUSE THE CANCELLATION OF THE WARRANTY OF THE PRODUCT

Before any operation on the float remember to disconnect the power supply from the main power.

Check that the maximum load power does not exceed the float's electrical values.  
In case of cable damage by the final user or installer, the float must be replaced.  
Do not make any joint on the cable of the float switch, as immersion of such joints could cause short circuits or electrical shocks.

## TECHNICAL FEATURES

AC: Max 10 A (250 V) resistive load – 8 A (250 V) inductive load

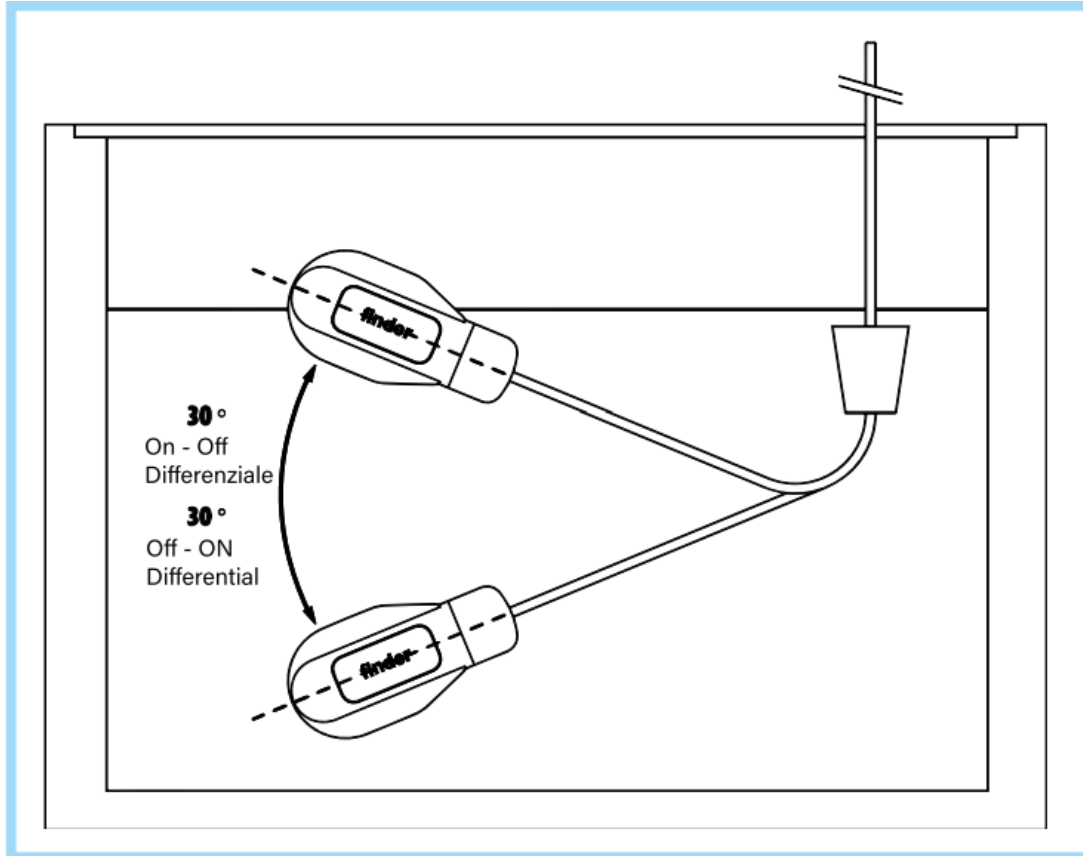
Operating temperature: max. +50°C (+40°C ACS)

Wire gauge: 7 mm

Max working pressure: 10 BAR

Protection Grade: IP 68

**ACTIVATION ANGLE: 30°**



## TERMINAL CONNECTIONS

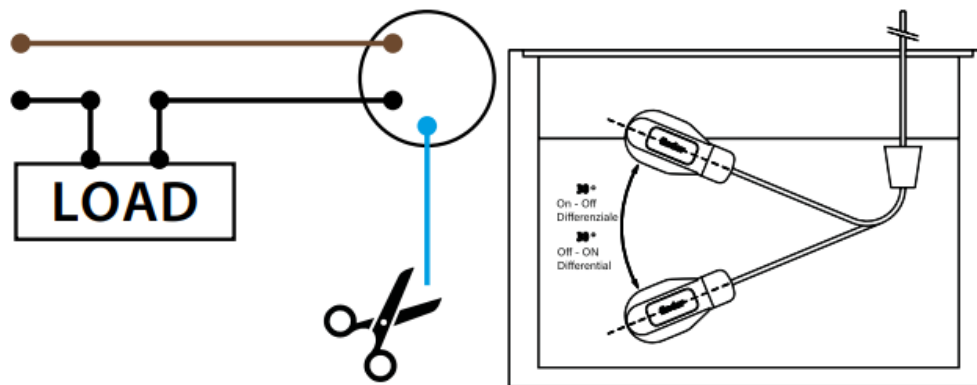
The upstream circuit must protect the electric wires from the overcurrent.

### WARNING

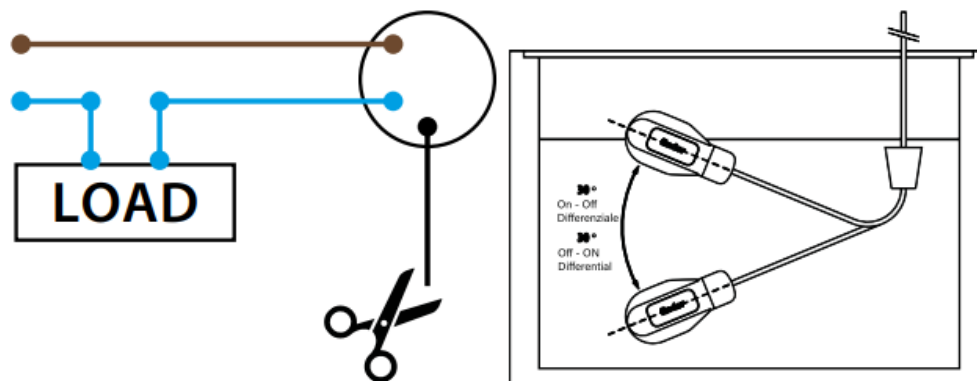
Lack of protection shall null and void the warranty in the event the float breaks.

- **Emptying: (Fig.2)** when black and brown wires are used, the circuit opens when float is down and closes when the float is up.  
**Note:** the blue wire must be insulated
- **Filling: (Fig.3)** when brown and blue wires are used, the circuit closes when float is down and opens when the float is up.  
**Note:** the black wire must be insulated

## Fig.2 EMPTYING



## Fig.3 FILLING



UK  
CA

C

€

RoHS  
RoHS Compliant  
2002/95/EC

EAC



100% MADE IN ITALY

IB72A1 – 01/23 – Finder S.p.A. con unico socio – 10040 ALMESE (TO) – ITALY

## Documents / Resources

	<p><a href="#">finder 72.A1 Float Level Switch</a> [pdf] Instructions</p> <p>72.A1, 72.A1 Float Level Switch, Float Level Switch, Level Switch</p>
--	----------------------------------------------------------------------------------------------------------------------------------------------------