



finder 48 Series Relay Interface Modules User Guide

[Home](#) » [finder](#) » finder 48 Series Relay Interface Modules User Guide 

finder 48 Series Relay Interface Modules User Guide



Contents

[1 ABOUT US](#)

[2 MasterIN System](#)

[3 4C Series Relay Interface Modules 8 – 10 A](#)

[4 39 Series MasterINTERFACE – Relay interface modules 0.1 – 2 – 6 A](#)

[5 39 Series MasterINTERFACE – Relay interface modules 0.1 – 2 – 6 A](#)

[6 Documents / Resources](#)

[6.1 References](#)

[7 Related Posts](#)

ABOUT US

Finder was founded in Italy in 1954. Since then it has been designing and manufacturing a wide range of electromechanical and electronic components for both the residential and industrial sectors.

Today, thanks to its global vision, Finder now distributes its products around the world through a network of 29 company-owned subsidiaries and more than 80 trade partnerships.

Finder is an international family made up of more than 1300 individuals, all united by the same values and passion for our products.

14,500 different products to satisfy a myriad of applications. From products at the heart of automation to the control of machines, power, time, temperature, liquid level and light

FINDER IS AN ITALIAN BRAND WITH A WORLDWIDE PRESENCE

4 PRODUCTION PLANTS IN EUROPE

29 SUBSIDIARIES

+80 OFFICIAL DISTRIBUTORS

ENVIRONMENTAL, SOCIAL AND GOVERNANCE (ESG)

Finder considers social and environmental sustainability as fundamental principles of doing business, just as it believes that business growth must develop in synergy with a conscious vision of the future.

That is why Finder is committed to reducing and eliminating CO2 emissions, focusing on circularity, caring for its employees to foster a safe, fair and inclusive work environment, spreading a culture of integrity and transparency, and collaborating with stakeholders who share its values.



This focus is demonstrated by the company's commitment to the following internationally recognized projects and certifications

OUR PRODUCTS
CARRY MORE

CERTIFICATIONS
THAN ANY
OTHER RELAY
MANUFACTURER

AUTONOMY AND INDEPENDENCE

Finder's managerial, financial and technological autonomy allows optimal control over all its business processes, the results of which include simplified customs procedures and a high reliability of commercial relations.

ISO 9001:2015

Quality management system



ISO 14001:2015

Environmental management system



ISO 45001:2018

Health and safety management system



ISO 14064-1 2018

Carbon Footprint verification



FSC

Forest Stewardship Council



AEOF

Simplified customs and enhanced supply chain security



Cribis Prime Company

Recognition of highest reliability of commercial relations

MasterIN System

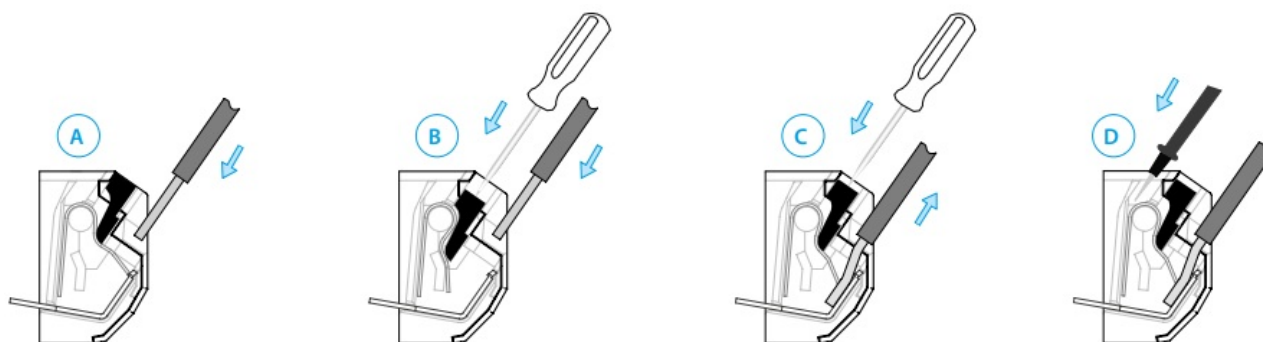
Why choose MasterIN System?

The Finder MasterIN System comprises a family of four series of existing Relay Interface Modules, each differentiated by their respective rated current and number of contacts as well as their different sockets and accessories.

Extremely simple, fast and secure installation

The **Push-in terminals** permit the quick connection of solid wires or ferrules by their simple insertion into the terminal. It is possible to open the terminal to extract the wire by first pushing down on the push-button using a screwdriver or fingers.

For stranded cable it is necessary first to open the terminal using the push button, both for the extraction and insertion.



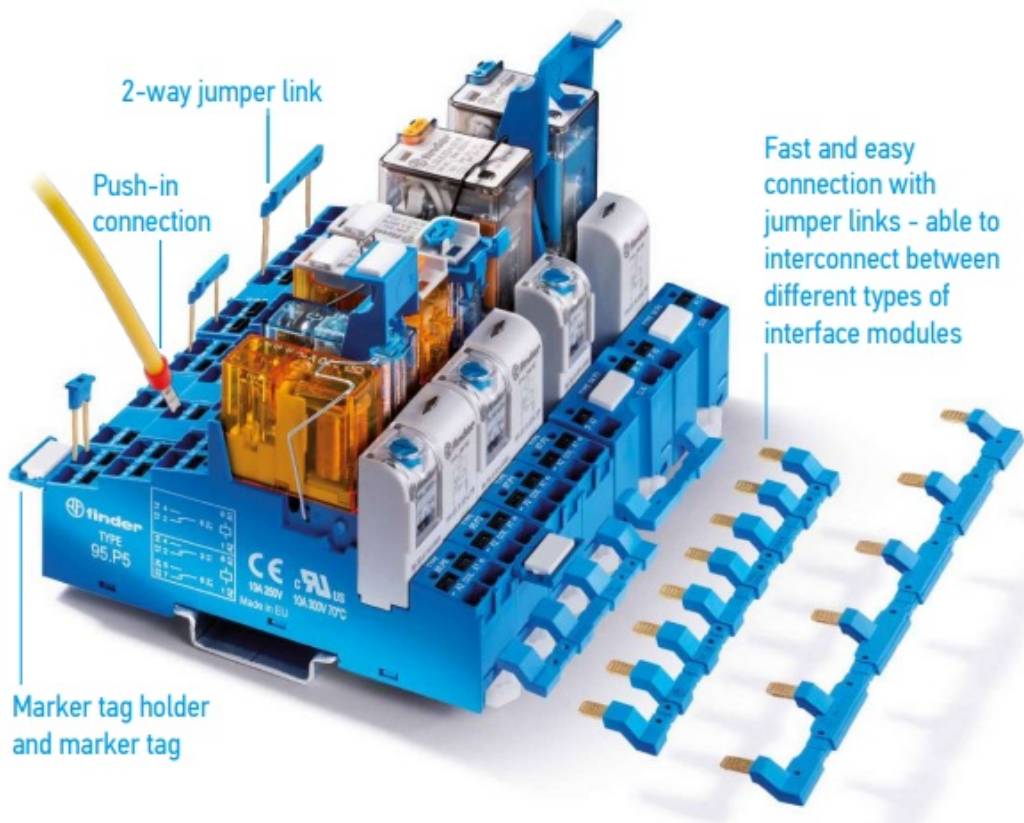
Push-in connection



48 – 4C – 58 Series Relay Interface Modules

The most complete range of accessories

High speed wiring thanks to terminals with rapid Push-in Technology. Versatility and easy integration characterises all the latest accessories that complement this system.



Control panels



Carousel warehouses



Medical and dentistry



Panels for electrical distribution



Elevators and lifts



- AC coils & DC coils
- Nominal voltage: 12 – 24 – 110 – 125 V DC, 12 – 24 – 110 – 230 V AC
- Supply status indication and EMC coil suppression module
- 15.8 mm wide
- Available with instant ejection of relay using plastic retaining clip (packaging code SPA) or with metal retaining clip (packaging code SMA)

UL[®] Certain relay/socket combinations

Type 48.P2 2 CO 8 A 250 V AC1



Type 48.P3 1 CO 10 A 250 V AC1

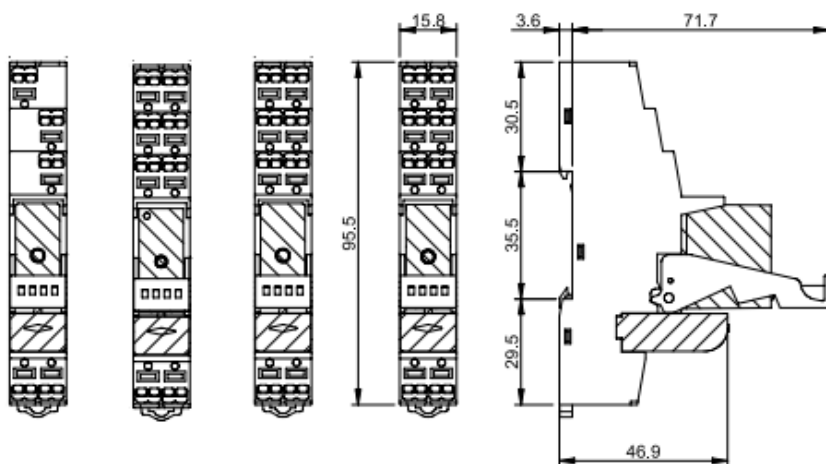
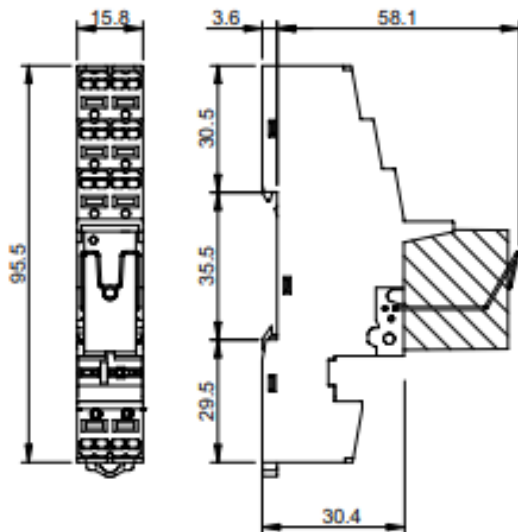
Type 48.P5 2 CO 8 A 250 V AC1

Type 48.P6 1 CO 16 A 250 V AC1

Type 48.P8 2 CO 10 A 250 V AC1



with forcibly guided contacts according to EN 61810-3, Type B (previously EN 50205)



Combinations	Code	Socket	Relay	Module	Metal retaining clip (packaging code SMA)	Plastic retaining and release clip (packaging code SPA)
	48.P2	95.P5.7	50.12	—	095.71	095.91.3
	48.P3	95.P3	40.31	99.02	095.71	095.91.3
	48.P5	95.P5	40.52	99.02	095.71	095.91.3
	48.P6	95.P5	40.61	99.02	095.71	095.91.3
	48.P8	95.P5	40.62	99.02	095.71	095.91.3

4C Series Relay Interface Modules 8 – 10 A

Escalators

Road / tunnel lighting

Hoists and cranes

Panels for electrical Control

panels distribution

AC coils & DC coils

- Nominal voltage: 12 – 24 – 110 – 125 V DC, 12 – 24 – 110 – 230 V AC
- Supply status indication and EMC coil suppression module
- 15.8 mm wide
- Available with instant ejection of relay using plastic retaining clip (packaging code SPA) or with metal retaining clip (packaging code SMA)

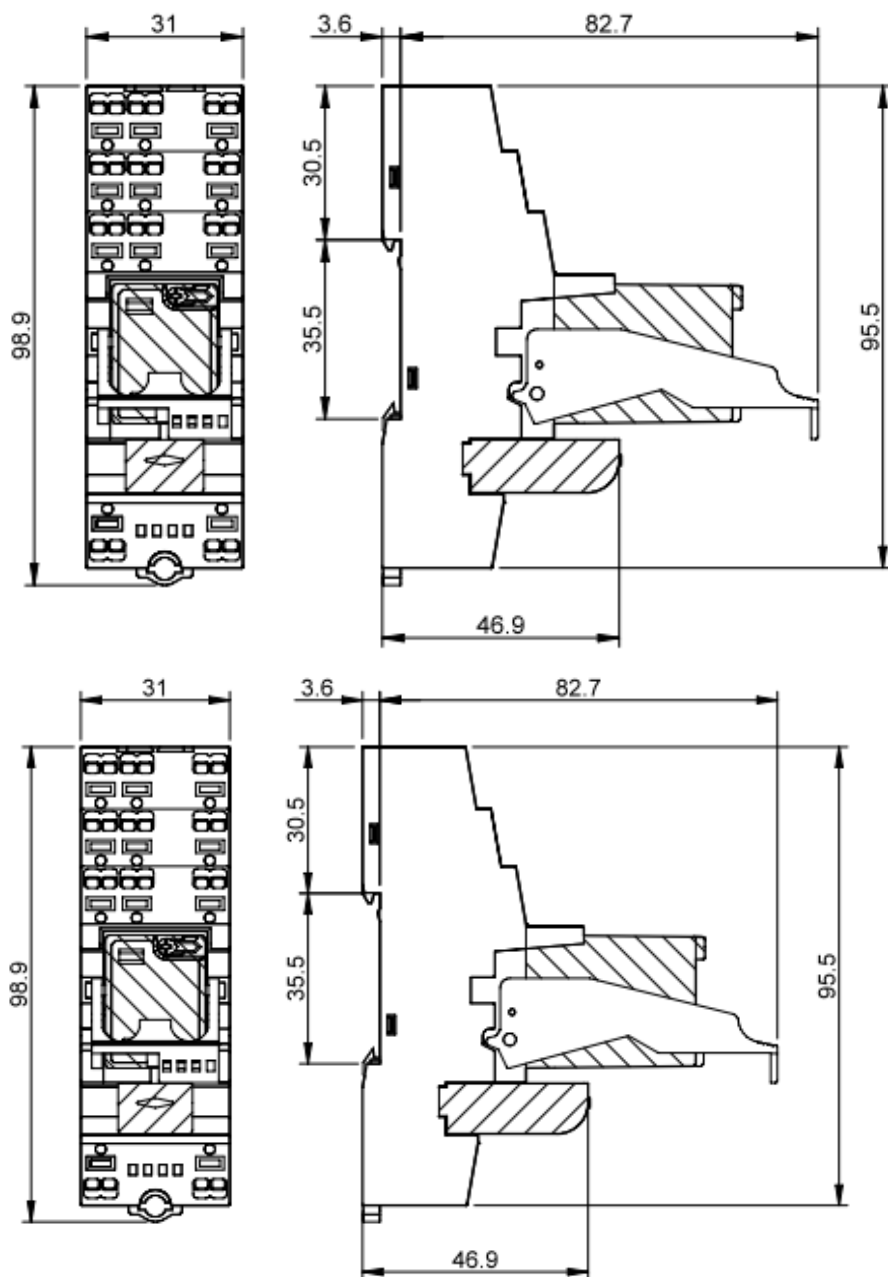
 Certain relay/socket combinations

Type 4C.P1 1 CO 10 A 250 V AC1



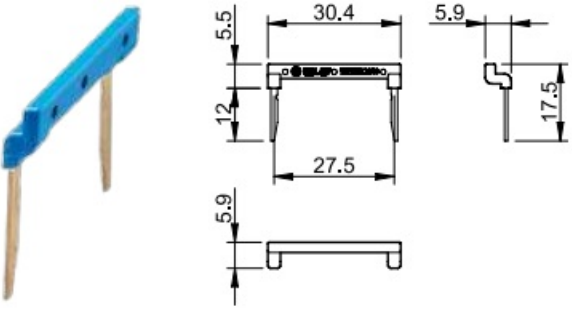
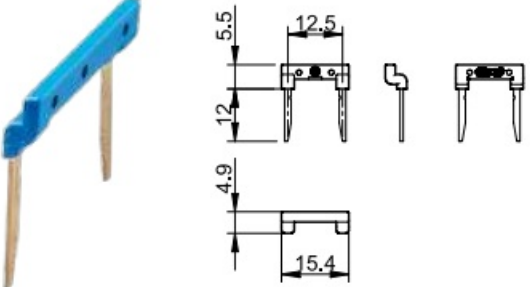
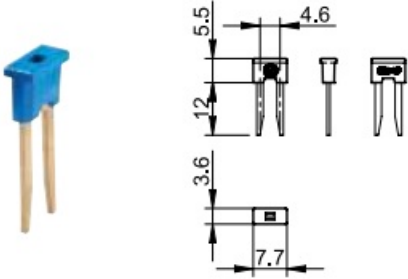
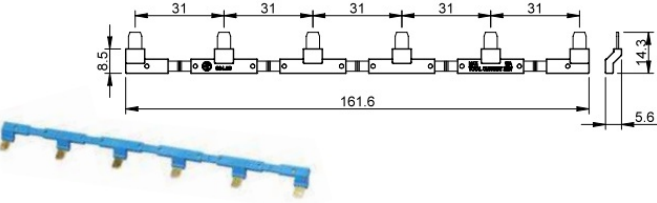
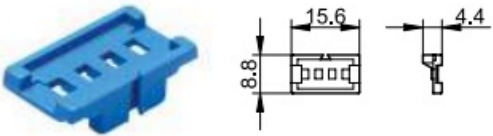
Type 4C.P2 2 CO 8 A 250 V AC1

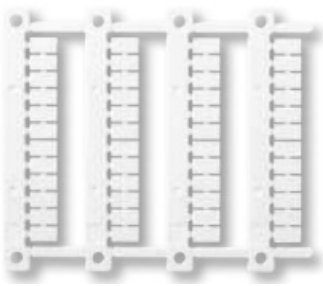




Combinations	Code	Socket	Relay	Module	Metal retaining clip (packaging code SMA)	Plastic retaining and release clip (packaging code SPA)
	58.P3	94.P3	55.33	99.02	094.71	094.91.3
	58.P4	94.P4	55.34	99.02	094.71	094.91.3

	Code		For interface
<p>Technical drawing of an 8-way jumper link. The drawing shows a perspective view of the blue plastic link and a side view with dimensions: 10.9 mm (link height), 5.8 mm (link width), 15.8 mm (link pitch), 117.2 mm (link length), 16.7 mm (link width), and 5.6 mm (link width).</p>	097.58	8-way jumper link Rated values: 10 A – 250 V	Type 48.P3 Type 48.P5 Type 48.P6 Type 48.P8 Type 4C.P1 Type 4C.P2

	094.52.1	2-way jumper link Rated values: 10 A – 250 V	Type 58.P3 Type 58.P4
	097.52	2-way jumper link Rated values: 10 A – 250 V	Type 48.P3 Type 48.P5 Type 48.P6 Type 48.P8 Type 4C.P1 Type 4C.P2 Type 58.P3 Type 58.P4
	097.42	2-way jumper link Rated values: 10 A – 250 V	Type 48.P3 Type 48.P5 Type 48.P6 Type 48.P8 Type 4C.P1 Type 4C.P2
	094.56	6-way jumper link Rated values: 10 A – 250 V	Type 58.P3 Type 58.P4
	097.00	Marker tag holder The marker tag holder – for tags that can be used with CEMBRE's thermal transfer printers	Type 48.P3 Type 48.P5 Type 48.P6 Type 48.P8 Type 4C.P1 Type 4C.P2 Type 58.P3 Type 58.P4

	<p>060.48</p>	<p>Sheet of marker tags for marker tag holder</p> <p>48 tags, (6 x 12)mm, plastic, for CEMBRE transfer printers</p>	<p>—</p>
--	----------------------	---	----------

Interfacing



Automotive



Food Industry



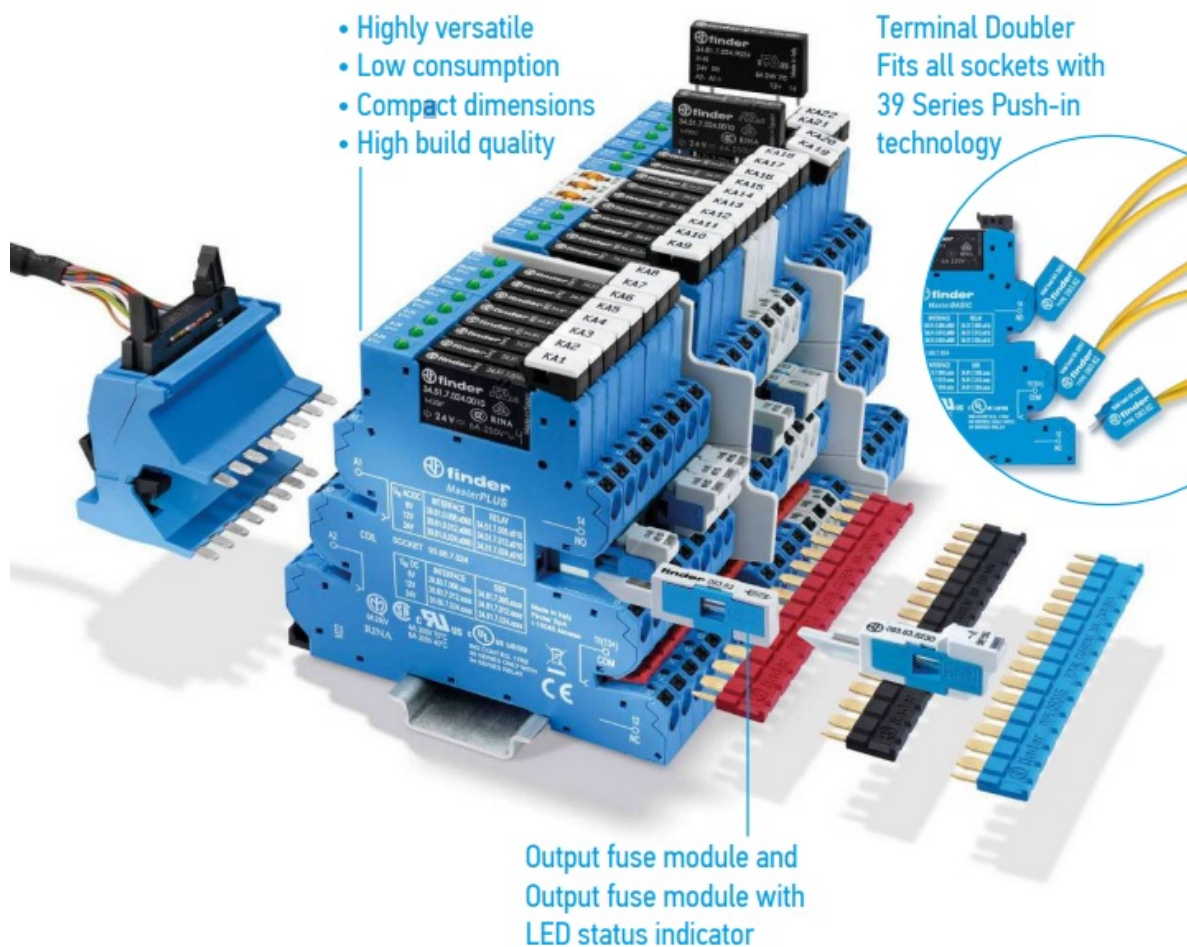
39 Series MasterINTERFACE – Relay interface modules 0.1 – 2 – 6 A

Ultra-slim, simple and versatile

The 39 Series with a width of just 6.2 mm is the space-saving solution offering the greatest number of permutations of sockets and accessories.

- Highly versatile
- Low consumption
- Compact dimensions
- High build quality

Terminal Doubler
Fits all sockets with
39 Series Push-in
technology



Control panels



Packaging machines




Bottling plant



Labelling machines



- AC coils & DC coils
- Nominal voltage from 6 to 125 V AC/DC, 230 V AC
- Also available in multivoltage versions covering 24 to 240 V AC/DC
- Nominal contact rating: – 1 CO 6 A (EMR) – 1 NO up to 6 A (SSR)

 **UL** **us** Certain relay/socket combinations





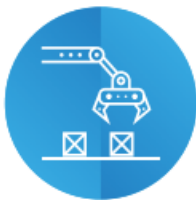
Type 39.01.0.024.0060 1 CO 6 A 250 V AC1

Type 39.61.7.024.0060 1 CO 6 A 250 V AC1

Combinations	Code	Socket	Relay	Type Relay
MasterBASIC	39.01	93.60	34.51	EMR
MasterPLUS	39.61	93.66	34.51	EMR
MasterINPUT	39.71	93.67	34.51	EMR
MasterOUTPUT	39.51	93.65	34.51	EMR
MasterBASIC	39.00	93.60	34.81	SSR
MasterPLUS	39.60	93.66	34.81	SSR
MasterINPUT	39.70	93.67	34.81	SSR
MasterOUTPUT	39.50	93.65	34.81	SSR

39 Series MasterINTERFACE – Relay interface modules 0.1 – 2 – 6 A

Industrial automation



Heating, ventilation and air conditioning



Panels for electrical distribution



Lifting and hoist systems



MasterTIMER

- AC coils & DC coils
- Nominal voltage: 12 – 24 V AC/DC
- Nominal contact rating:
 - 1 CO 6 A (EMR)
 - 1 NO up to 6 A (SSR, only for timer)

Certain relay/socket combinations



Atex compliant (Ex ec nC) option available

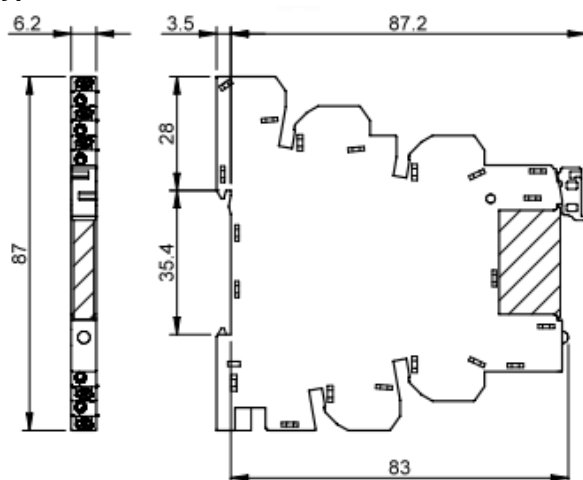


HazLoc Class I Div. 2, Group A, B, C, D – T5 – T6 (option available)

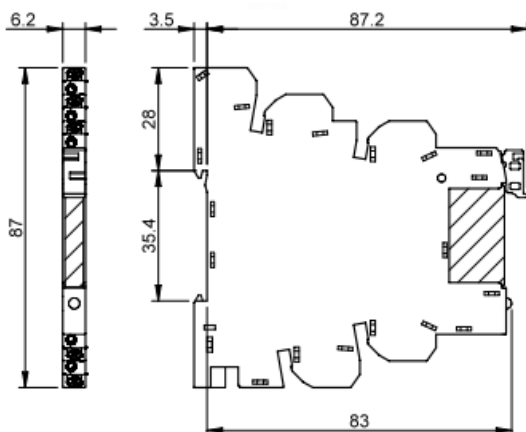








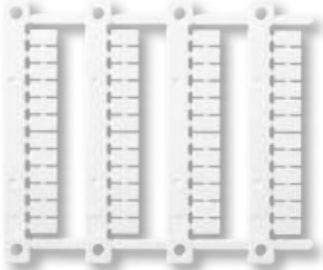
Type 39.90.0.024.9024 1 NO 6 A 24 V DC

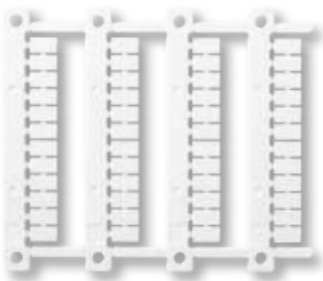
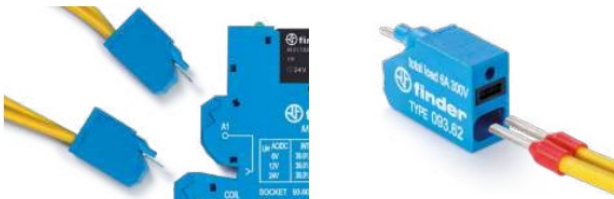



Type 39.01.0.024.xx73 1 CO 6 A 250 V AC1



Combinations	Code	Socket	Relay	Type Relay
MasterTIMER	39.91	93.69	34.51	EMR
MasterTIMER	39.90	93.69	34.81	SSR
MasterBASIC – ATEX	39.01.x.xxx.0073	93.60.x.xxx.7	34.51.x.xxx.0000	EMR – ATEX – C1D2
MasterTIMER – ATEX	39.91.x.xxx.0073	93.69.x.xxx.7	34.51.x.xxx.0000	EMR – ATEX – C1D2


	Code	
	093.63	Output fuse moduleFor 5 x 20 mm fuses up to 6 A 250 V Easy visibility of the fuse condition through the windowQuick connection to socket
	093.63.0.024 – (6...24)V AC/DC 093.63.8.230 – (110...240)V AC	Output fuse module with LED status indicatorFor 5 x 20 mm fuses up to 6 A 250 V Easy visibility of the fuse condition through the windowQuick connection to socket
	93.16 (blue) 93.16.0 (black) 93.16.1 (red)	16-way jumper link Rated values: 36 A – 250 V Possibility to serially “chain” jumper links
	093.60	Dual-purpose plastic separator1.8 mm or 6.2 mm separation
	093.48	Sheet of marker tags48 tags, (6 x 10) mm, plastic

	060.48	Sheet of marker tags for CEMBRE transfer printers, 48 tags, (6 x 12)mm, plastic
	093.62	Terminal Doubler Fits all sockets with 39 Series Push-in technology
	093.68.14.1	The MasterADAPTER permits the easy connection of A1/A2 terminals of up to 8 MasterINTERFACE modules to PLC outputs via a 14-Pole cable, plus simple 2-wire power supply connection

FINDER S.p.A. sole proprietorship
Via Drubiaglio, 14 – 10040 ALMESE (TO) ITALY
tel +39 011 9346211 – export@findernet.com
findernet.com



Documents / Resources

	finder 48 Series Relay Interface Modules [pdf] User Guide 48 Series, 48 Series Relay Interface Modules, Relay Interface Modules, Interface Modules, Modules
---	--

References

- [!\[\]\(694fcb4611893e9db5249daba48abfc1_img.jpg\) **Relays, Timers, Movement detectors, Dimmers | Finder Relays, Inc.**](#)
- [**User Manual**](#)

[Manuals+](#), [Privacy Policy](#)

This website is an independent publication and is neither affiliated with nor endorsed by any of the trademark owners. The "Bluetooth®" word mark and logos are registered trademarks owned by Bluetooth SIG, Inc. The "Wi-Fi®" word mark and logos are registered trademarks owned by the Wi-Fi Alliance. Any use of these marks on this website does not imply any affiliation with or endorsement.