



finder 12.51 Digital Time Switch Daily/Weekly Programming Instruction Manual

[Home](#) » [finder](#) » finder 12.51 Digital Time Switch Daily/Weekly Programming Instruction Manual

Contents [[hide](#)]

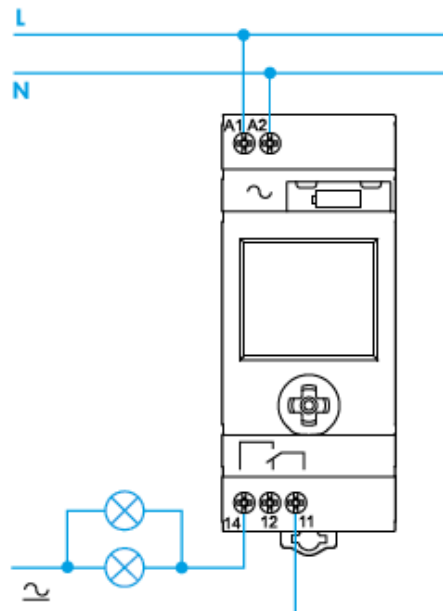
- [1 finder 12.51 Digital Time Switch Daily/Weekly Programming](#)
- [2 WIRING DIAGRAM](#)
- [3 DISPLAY LEGEND](#)
- [4 SETTINGS](#)
- [5 PROGRAMMING](#)
- [6 SETTING MANUAL MODE](#)
- [7 Battery replacement](#)
- [8 Documents / Resources](#)
- [9 Related Posts](#)



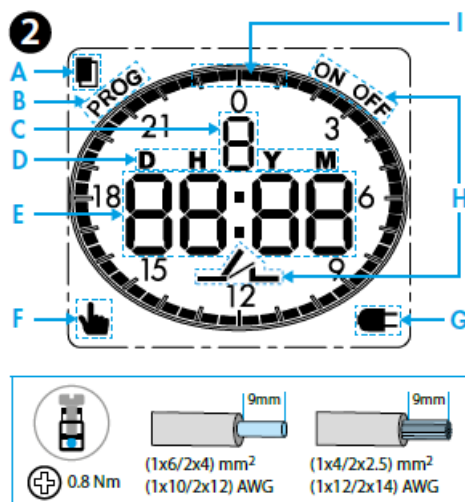
finder 12.51 Digital Time Switch Daily/Weekly Programming



WIRING DIAGRAM

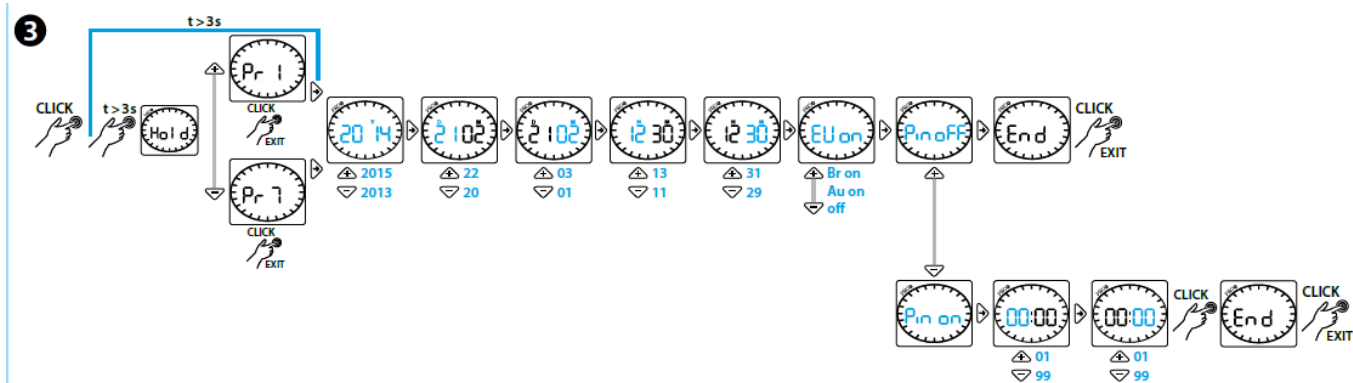


DISPLAY LEGEND



- A COPY function
- B Programming
- C Day of the week (1 = MON ... 7 = SUN)
- D D = day – H = hour – Y = year – M = minutes / month
- E PIN – Pr – year – day – month – hour – minutes – summer time – END F MANUAL mode
- G Time switch without power supply. Powered by battery
- H Current contact state
- I Current state/programming of the segments (black square – white square=OFF)

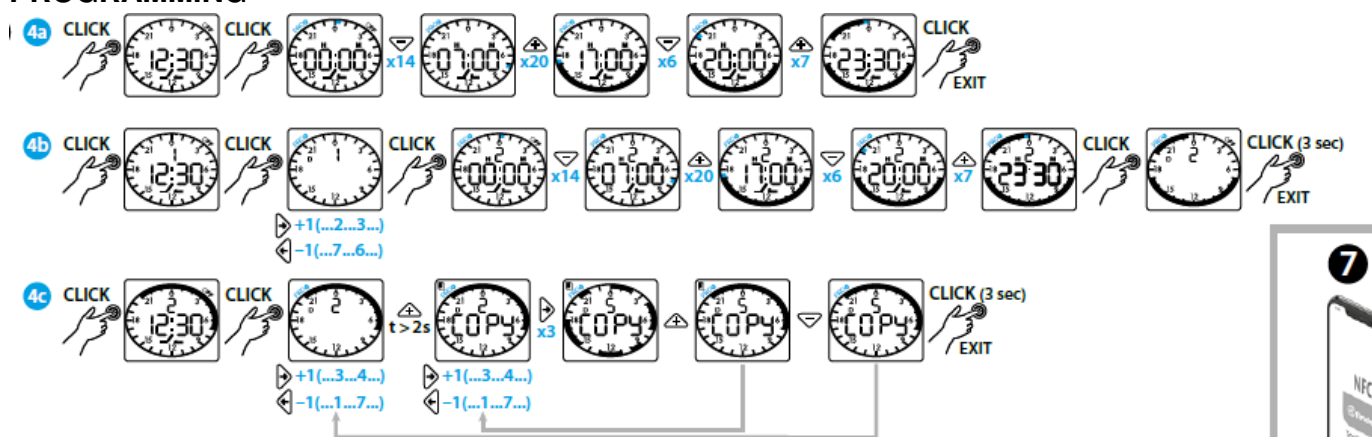
SETTINGS



Push the joystick to activate the display. Push >3s to display Pr. Using the joystick set the following data:

- Pr1: DAILY program
- Pr7: WEEKLY program
- Y = year – D = day – M = month – H = hour – M = minutes
- Summer time: automatic change with EU(Europe) / Br(Brazil) / Au(Australia) ON
- PIN OFF / PIN ON (on PIN ON set a number to lock/unlock the timer)

PROGRAMMING



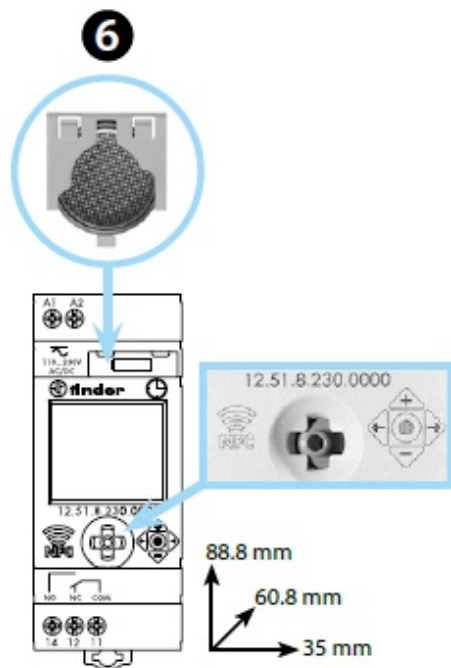
- **4a** DAILY program: push the joystick to activate the display. Push it again to view the hour 00:00. Use the joystick to set the program required.
Example: (ON from 07:00 to 17:00)/(ON from 20:00 to 23:30)
- **4b** WEEKLY program: push the joystick to activate the display. Push it again to view the current day. Use the joystick to first select appropriate day, and then set the program required. Example: Tuesday (ON from 07:00 to 17:00) / (ON from 20:00 to 23:30). Repeat for other days.
- **4c** COPY Function: push the joystick to activate the display. Push again to view the current day, and then select the day to be copied. Copy by pulling the joystick to the + symbol. Then select the day to which the program is to be pasted, and then press the joystick to the + symbol to paste program. To exit, pull the joystick to the – symbol and then press it. [example: copy Tuesday (2) program into Thursday (5)].

SETTING MANUAL MODE



5a Push the joystick to activate the display. Push it towards the + symbol for 2 seconds to activate manual ON (fig.1). To deactivate, push the joystick towards the – symbol for 2 seconds (fig.2). 5b Push the joystick to activate the display. Push it towards the – symbol for 2 seconds to activate manual OFF (fig.1). To deactivate, push the joystick towards the + symbol for 2 seconds (fig.2).

Battery replacement



BATTERY CR 2032 (LiMnO₂) 3V, 230mAh. Complies with Article 11, EU directive 2006/66/CE. Dispose of batteries according to local regulations.

NOTE

- Back-light display (only with power supply)
- Minimum switching interval: 30 min
- Power back-up (Battery life): 6 years

Programmable with NFC technology by the App FINDER TOOLBOX downloaded from Google Play™ – Apple Store.



Documents / Resources

	finder 12.51 Digital Time Switch Daily/Weekly Programming [pdf] Instruction Manual 12.51, Digital Time Switch Daily Weekly Programming, 12.51 Digital Time Switch Daily Weekly Programming
--	--

