



fifine

K688T USER'S GUIDE



SS Version:24-V1

Contents [[hide](#)]

[1 WARRANTY](#)

[2 CERTIFICATION](#)

[3 WHAT'S IN THE BOX](#)

[4 PRODUCT DESCRIPTION](#)

[5 GUIDELINE FOR USE](#)

[6 FUNCTION KEY INSTRUCTION](#)

[7 COMPUTER SET-UP \(MAC OS & WINDOWS\)](#)

[8 SPECIFICATION](#)

[9 Documents / Resources](#)

[9.1 References](#)

WARRANTY

Every Fifine product comes with a Limited Warranty that in normal use of product will be free of any defects in material or workmanship for a period of one year from its original date of purchase. For detailed warranty info, please refer to the warranty policy on our website, or contact us directly.

CERTIFICATION

Eligible to bear CE Marking.

Authorized European Representative:

Name: AOCE INFORMATION TECHNOLOGY

Address: 61 rue de Lyon 75012 Paris France

Tel: +33-633297410

Authorized British Representative:

Name: AOCE LIMITED

Address: Office Suite 29a 3/F 23 Wharf Street, London, England, SE8 3GG

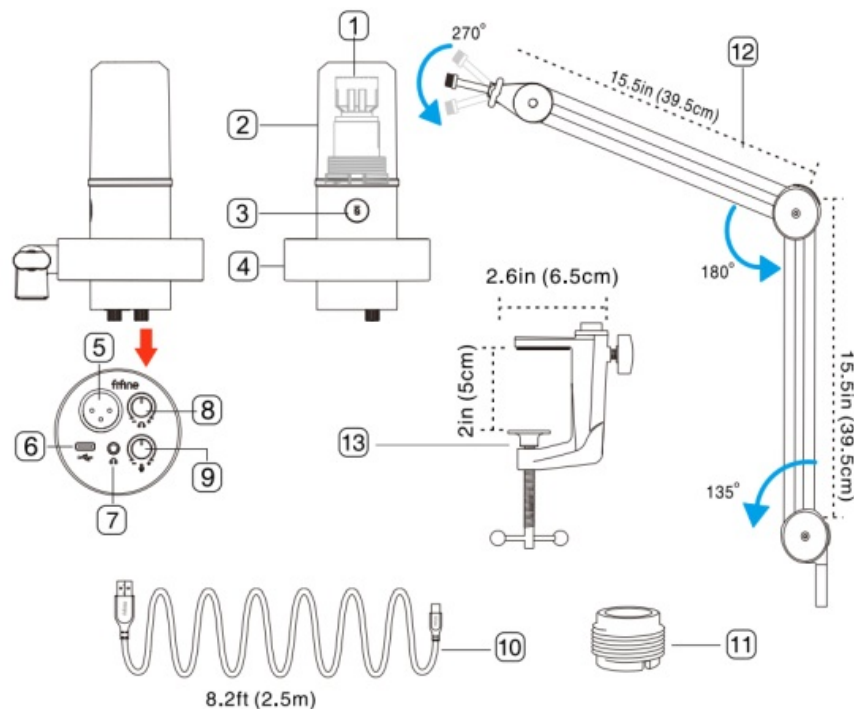
Tel: +44-759 7659 775



WHAT'S IN THE BOX

- 1 X Microphone with Shock Mount
- 1 X Boom Arm Stand
- 1 X C-Clamp
- 1 X 8.2ft (2.5m) USB Cable
- 1 X 5/8" Male to 3/8" Female Adapter
- 1 X User's Manual

PRODUCT DESCRIPTION



1. Dynamic Microphone Capsule
2. Detachable Windscreen
3. Mute Button and LED Indicator
4. Shock Mount
5. XLR Port
6. Type-C Port
7. Headphone Jack
8. Headphones Volume Knob
9. Microphone Gain Knob
10. 8.2ft (2.5m) USB Cable
11. Screw Adapter
12. Boom Arm Stand
13. C-Clamp

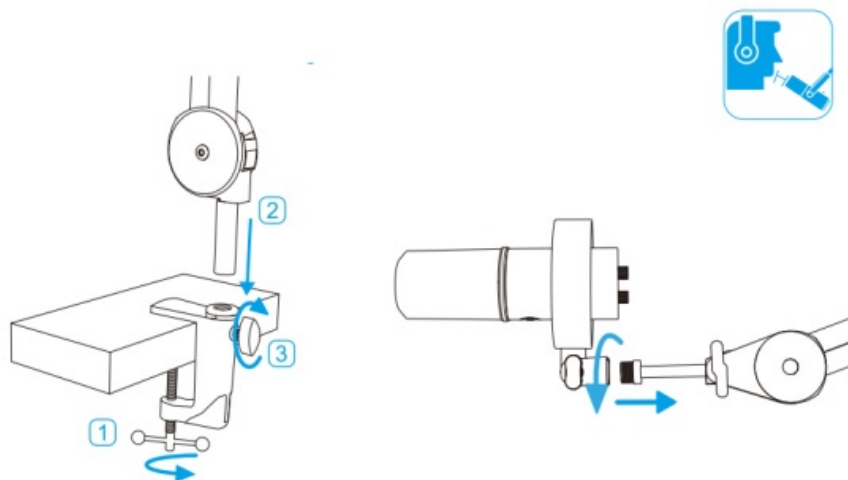
Tips: No XLR cable is included

GUIDELINE FOR USE

Installation and Use

Install the C-clamp and boom arm stand on desk. Screw the mic to the arm stand, until they are firmly connected.

Always keep the TOP of the mic facing the audio source, It is suggested that record in the range of 2 to 6 in.

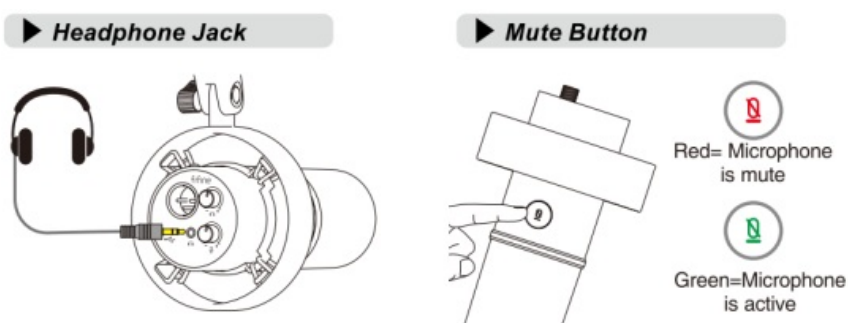


XLR Port Connection

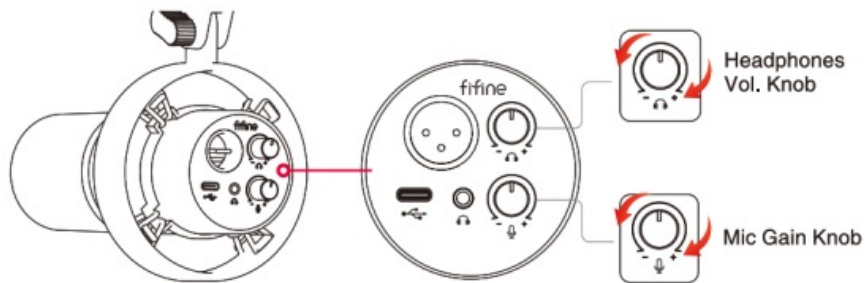
Connect the microphone to mixer or audio interface via the XLR cable (NOT INCLUDED). No preamp or phantom power are needed.

Tips: All the function keys and headphones monitoring on the mic are only available when using USB-C port connection, but invalid when using XLR port connection.

FUNCTION KEY INSTRUCTION



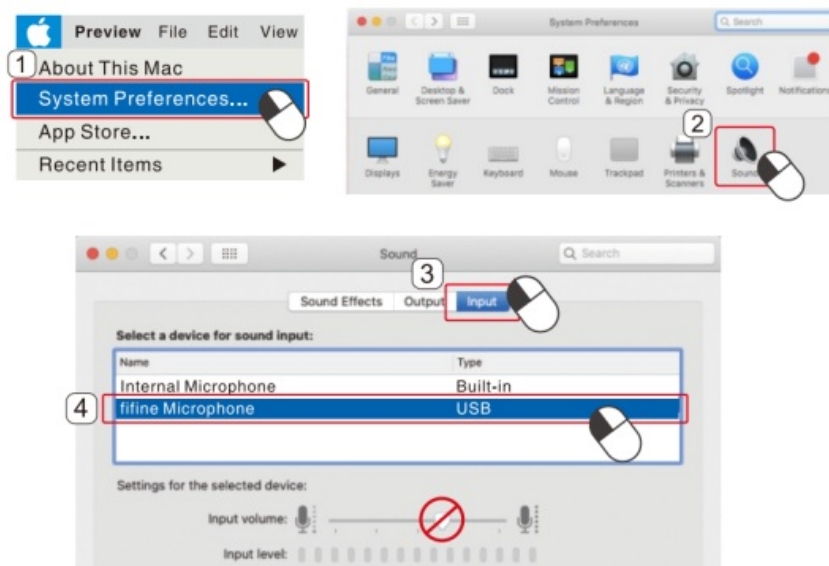
Microphone Gain and Headphone Volume Knob



COMPUTER SET-UP (MAC OS & WINDOWS)

APPLE MAC OS (Only Applicable for USB Connection)

Input Settings



Output Settings

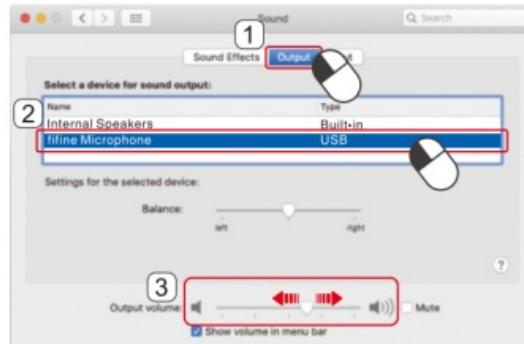
Output the audio from internal speakers



Output the audio from headphones

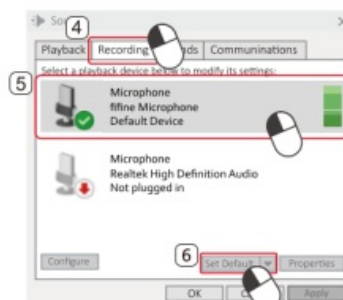
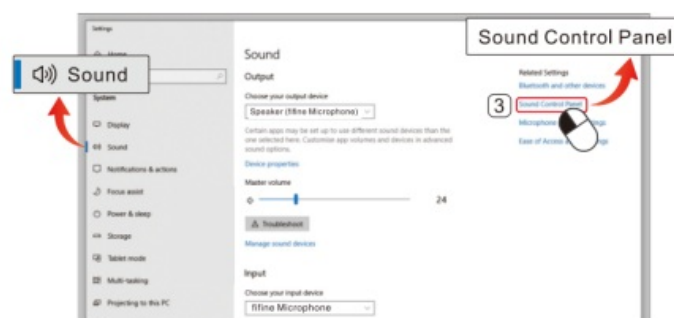
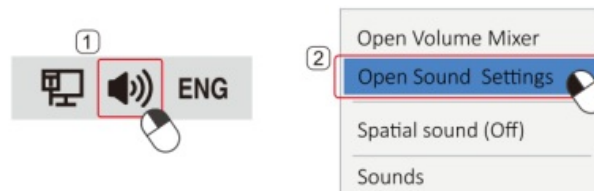


Output the audio from mic



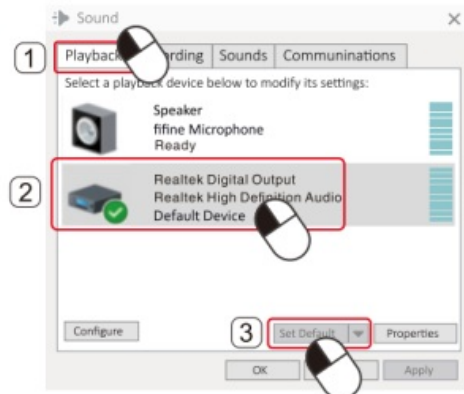
WINDOWS (Only Applicable for USB Connection)

Input Settings

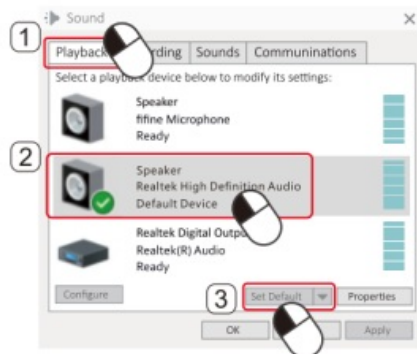


Output Settings

Output the audio from built-in speaker



Output the audio from headphones



Output the audio from mic



Tips:

1. "Speaker Properties"- "Level"-Make sure turn on the "speaker icon" under "Microphone" before monitoring the mic.
2. Manually select the "Speaker (Realtek High Definition Audio)" as the default playback device, if you want to output computer audio via the computer built-in speaker.
3. There is no XLR cable included.

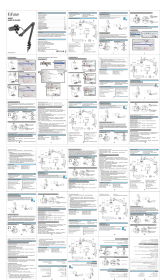
4. When the microphone is connected to computer, mic input volume is only adjusted by gain knob on the mic, but can not be adjusted by computer setting.
5. Select “fifine Microphone” as the input device from the setting when using recording software.

SPECIFICATION

Model Number: K688T	Frequency Range: 50Hz-16KHz
Element: Dynamic	S/N Ratio: >80dB
Polar Pattern: Cardioid	Sensitivity: -50+3dB
Connector: USB-C and XLR	Power Supply: 5+0.25V



Documents / Resources

	fifine K688T Recording Microphone with Dyanmic Capsule [pdf] User Guide K688T, K688T Recording Microphone with Dyanmic Capsule, Recording Microphone with Dyanmic Capsule, Microphone with Dyanmic Capsule, Dyanmic Capsule
---	--

References

- [User Manual](#)

📁 fifine

📎 Dyanmic Capsule, fifine, K688T, K688T Recording Microphone with Dyanmic Capsule, Microphone with Dyanmic Capsule, Recording Microphone with Dyanmic Capsule

Leave a comment

Your email address will not be published. Required fields are marked *

Comment *

Name

Email

Website

☐ Save my name, email, and website in this browser for the next time I comment.

Post Comment

Search:

Search

[Manuals+](#) | [Upload](#) | [Deep Search](#) | [Privacy Policy](#) | [@manuals.plus](#) | [YouTube](#)

This website is an independent publication and is neither affiliated with nor endorsed by any of the trademark owners. The "Bluetooth®" word mark and logos are registered trademarks owned by Bluetooth SIG, Inc. The "Wi-Fi®" word mark and logos are registered trademarks owned by the Wi-Fi Alliance. Any use of these marks on this website does not imply any affiliation with or endorsement.