



**Contents** [ [hide](#) ]

- [1 fifine K688 USB-XLR Dynamic Microphone](#)
- [2 WARRANTY](#)
- [3 CERTIFICATION](#)
- [4 WHAT'S IN THE BOX](#)
- [5 PRODUCT DESCRIPTION](#)
- [6 GUIDELINES FOR USE](#)
- [7 FUNCTION KEY INSTRUCTION](#)
- [8 COMPUTER SET-UP](#)
- [9 SPECIFICATION](#)
- [10 Documents / Resources](#)
  - [10.1 References](#)



## **fifine K688 USB-XLR Dynamic Microphone**



## WARRANTY

Every Fifine product comes with a Limited Warranty that in normal use of product will be free of any defects in material or workmanship for a period of one year from its original date of purchase. For detailed warranty info, please refer to the warranty policy on our website, or contact us directly.

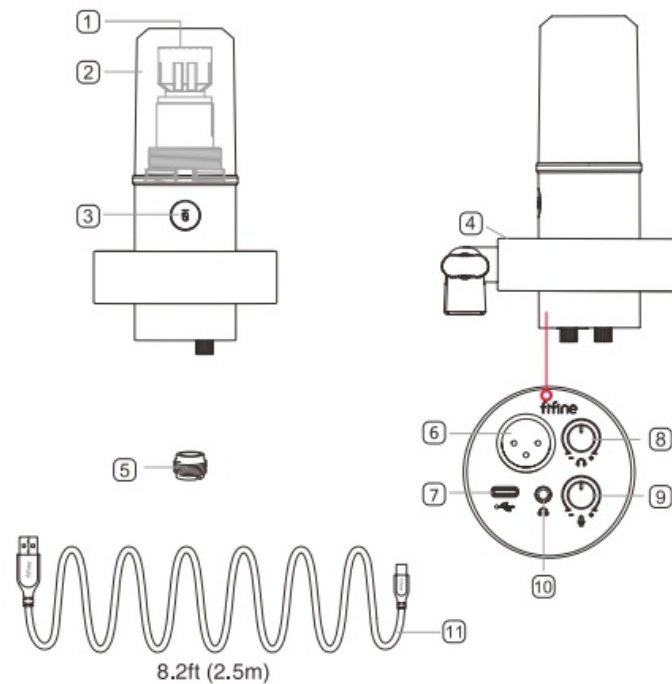
## CERTIFICATION

- Eligible to bear CE Marking.
- Authorized European Representative:
  - Name: AOCE INFORMATION TECHNOLOGY Address: 61 rue de Lyon 75012 Paris France
  - Tel: +33-633297410
- Authorized British Representative:
  - Name: AOCE LIMITED
  - Address: Office Suite 29a 3/F 23 Wtitarf Street, London, England, SE8 3GG
  - Tel: +44-759 7659 775

## WHAT'S IN THE BOX

- 1X Microphone with Shock Mount
- 1X 8.2ft (2.5m) USB Cable
- 1X 5/8" to 3/8" Adapter
- 1X User's Manual

## PRODUCT DESCRIPTION



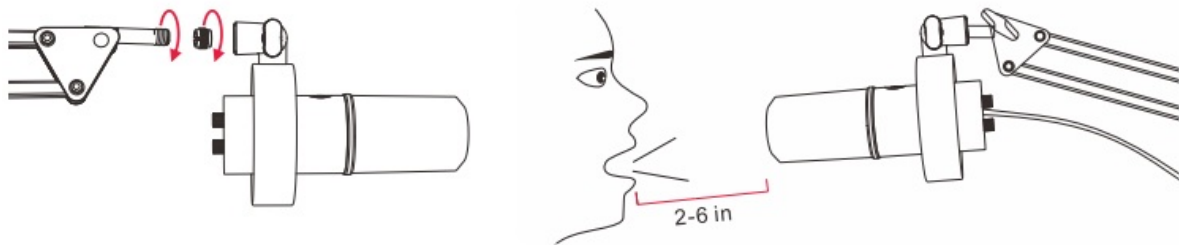
1. Dynamic Microphone Capsule
2. Detachable Windscreen
3. Mute Button and LED Indicator
4. Shock Mount
5. Screw Adapter
6. XLR Port
7. Type-C Port
8. Headphones Volume Control
9. Microphone Gain Knob
10. Headphone Jack
11. USB Cable

**Tips:** No XLR cable is included

## GUIDELINES FOR USE

### Installation and Use

Attach the arm stand (NOT INCLUDED) to the mic via the included 5/8" to 3/8" adapter for better effect. Always keep the top of the mic facing the audio source.



## USB-C Port Connection

Connect the microphone to the computer or PS4/PS5 via the USB cable (INCLUDED).

Tips: It is suggested to connect USB-A port at the rear of PS4/PS5.

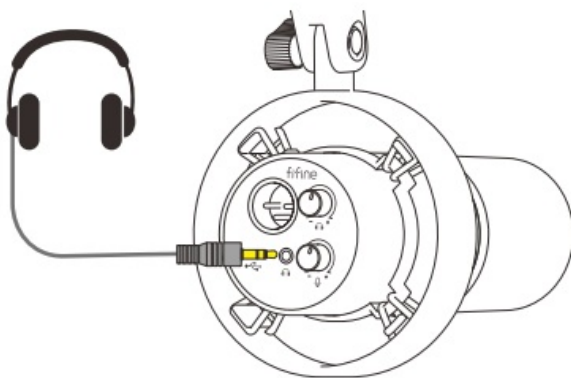
## XLR Port Connection

Connect the microphone to mixer or audio interface via the XLR cable (NOT INCLUDED). No preamp or phantom power are needed.

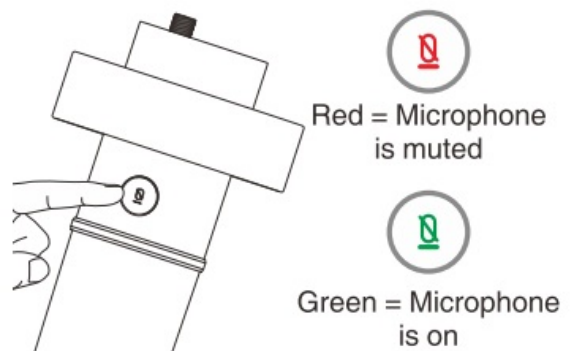
Tips: All the function keys and headphones monitoring on the mic are only available when using USB-C port connection, but invalid when using XLR port connection.

## FUNCTION KEY INSTRUCTION

### ► Headphone Jack

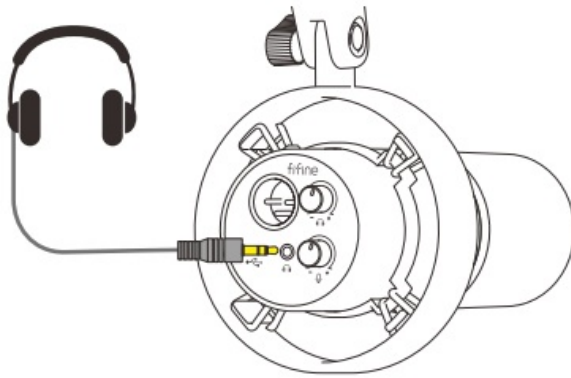


### ► Mute Button

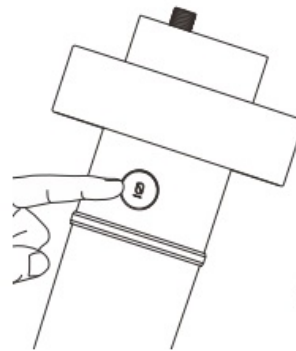


## Microphone Gain and Headphones Volume Control

## ► Headphone Jack



## ► Mute Button



Red = Microphone is muted

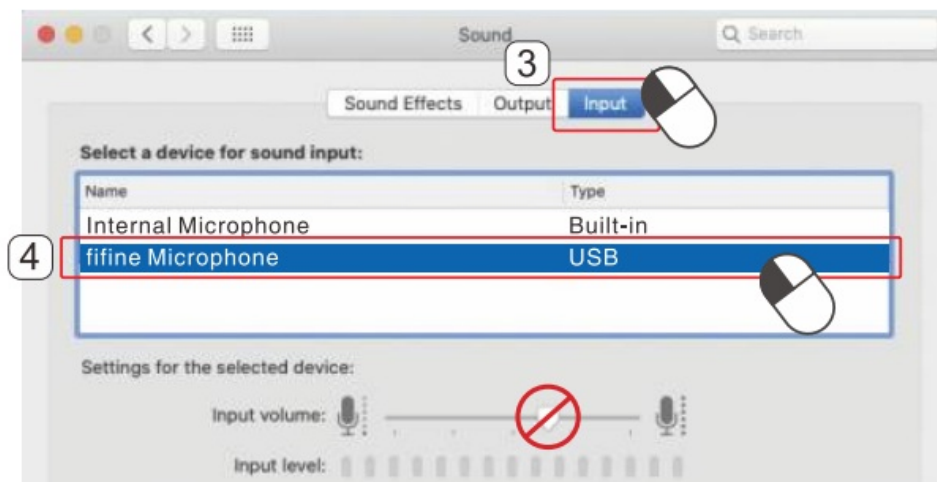
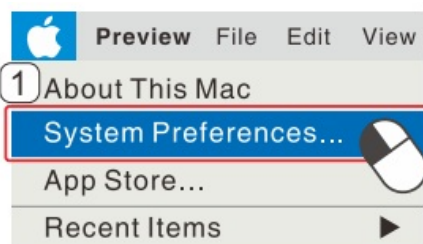


Green = Microphone is on

## COMPUTER SET-UP

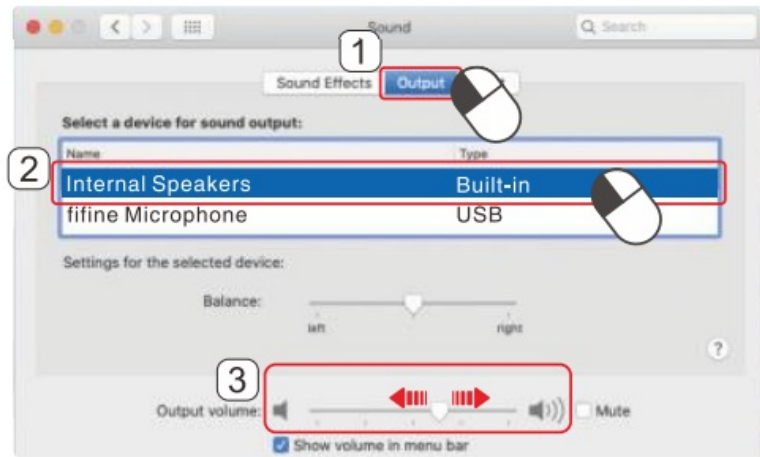
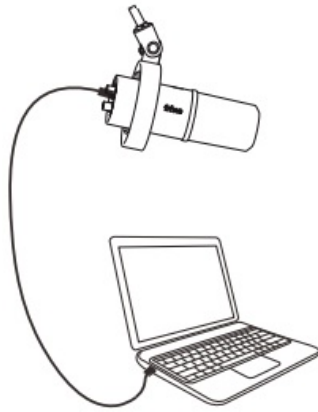
(MAC OS & WINDOWS)

### Input Settings

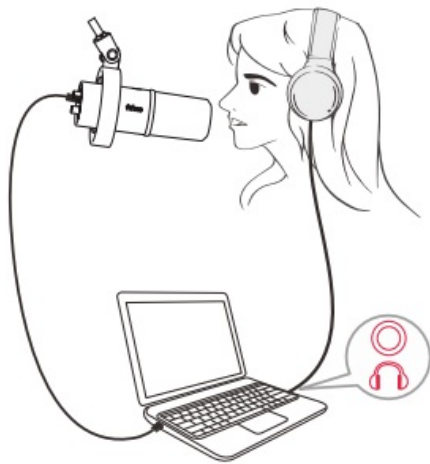


### Output Settings

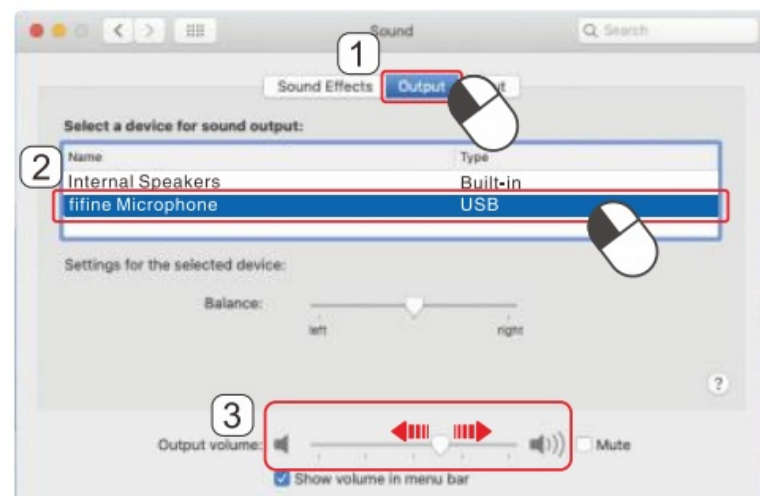
Output the audio from Internal speakers



Output the audio from headphones

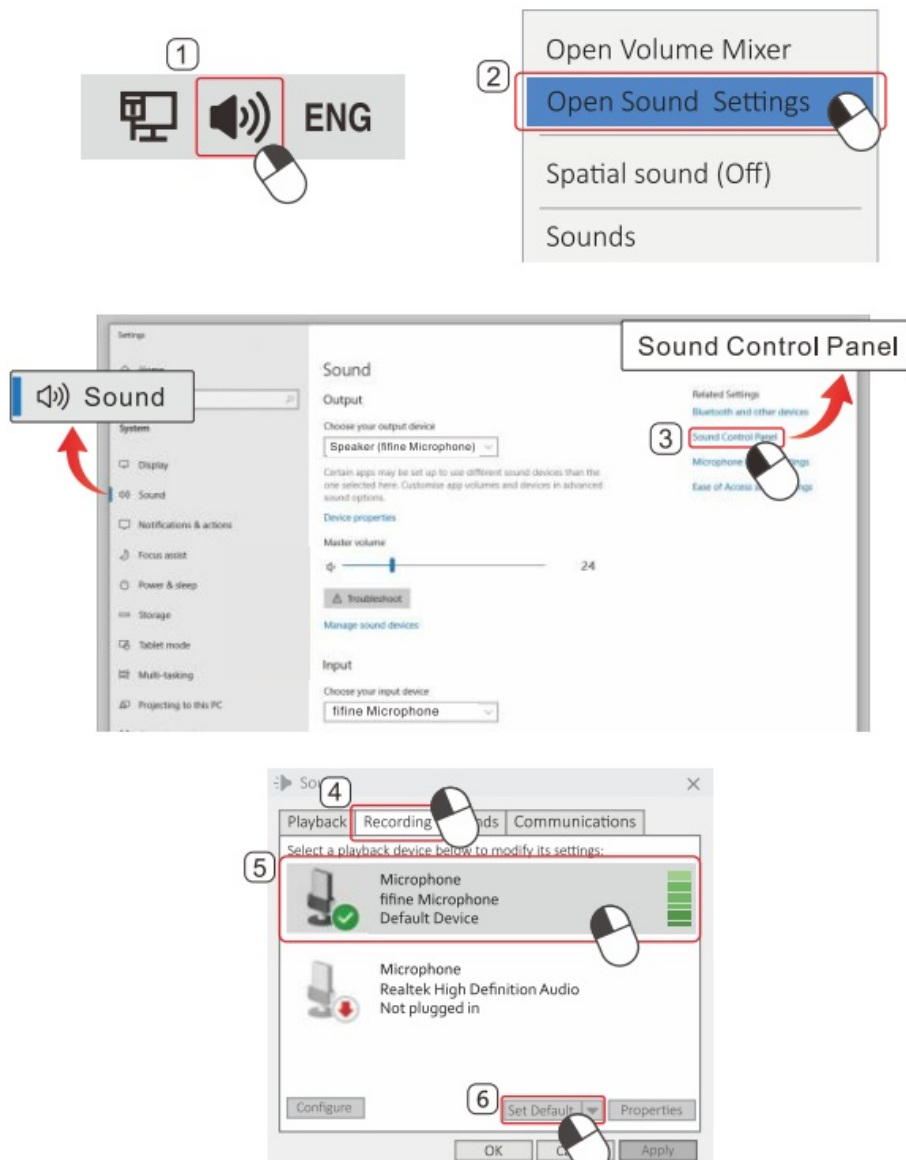


Output the audio from mlc



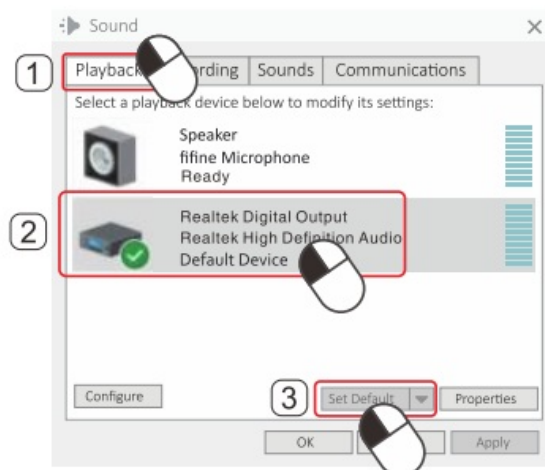
Windows (Only Applicable 1 or USB Connection)

## Input Settings



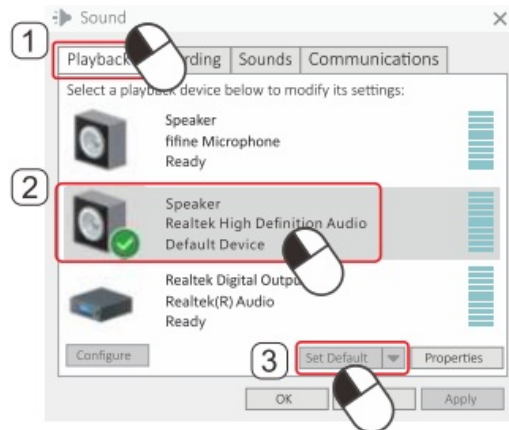
## Output Settings

Output the audio from built-In speaker





## Output the audio from headphones



## Output the audio from mic



## Tips

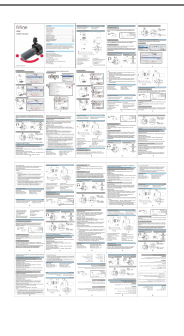
1. "Speaker Properties"- "Level"-Make sure turn on the "speaker icon" under "Microphone" before monitoring the mic.
2. Manually select the "speaker (Realtek High Definition Audio)" as the default playback device if you want to output computer audio via the computer's built-in speaker.
3. There is no XLR cable included.
4. When the microphone is connected to the computer, mic input volume is only adjusted by gain knob on the mic, but can not be adjusted by the computer setting.
5. Select "fifine Microphone" as the input device from the settings when using recording software.

## SPECIFICATION



- Model Number: K688
- Element: Dynamic
- Polar Pattern: Cardioid
- Connector: USB-C and XLR
- Frequency Range: 50Hz-16KHz
- S/N Ratio: >80dB
- Sensitivity: -50+3dB
- Power Supply: 5+0.25V

# Documents / Resources

	<p><a href="#">fifine K688 USB-XLR Dynamic Microphone [pdf]</a> User Guide</p> <p>K688 USB-XLR Dynamic Microphone, K688, USB-XLR Dynamic Microphone, Dynamic Microphone, Microphone</p>
--	---

## References

- [User Manual](#)

fifine

Dynamic Microphone, fifine, K688, K688 USB-XLR Dynamic Microphone, Microphone, USB-XLR Dynamic Microphone

## Leave a comment

Your email address will not be published. Required fields are marked \*

Comment \*

Name

Email

Website

☐ Save my name, email, and website in this browser for the next time I comment.

**Post Comment**

**Search:**

e.g. whirlpool wrf535swhz

**Search**

[Manuals+](#) | [Upload](#) | [Deep Search](#) | [Privacy Policy](#) | [@manuals.plus](#) | [YouTube](#)

This website is an independent publication and is neither affiliated with nor endorsed by any of the trademark owners. The "Bluetooth®" word mark and logos are registered trademarks owned by Bluetooth SIG, Inc. The "Wi-Fi®" word mark and logos are registered trademarks owned by the Wi-Fi Alliance. Any use of these marks on this website does not imply any affiliation with or endorsement.