

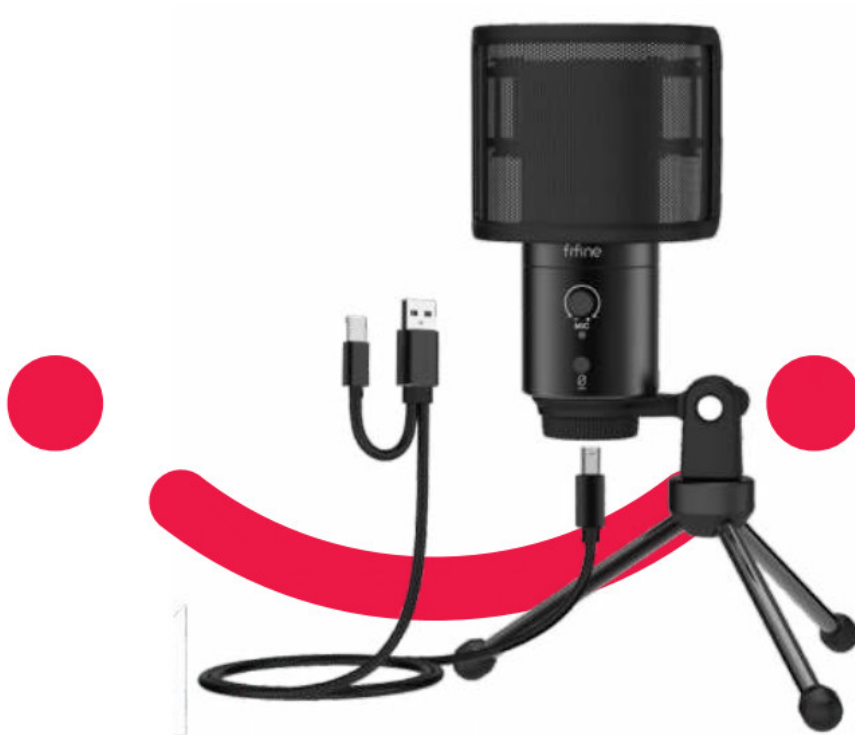


FIFINE K683A Type C USB Condenser Microphone User Guide

[Home](#) » [fifine](#) » FIFINE K683A Type C USB Condenser Microphone User Guide 

fifine

K683A USER'S GUIDE



B2B Version:Sep-30-2020

Contents

- 1 WHAT'S IN THE BOX?
- 2 CONTACT US
- 3 WARRANTY
- 4 PRODUCT DESCRIPTION
- 5 POP FILTER
- 6 GUIDELINES FOR USE
- 7 MUTE BUTTON
- 8 HEADPHONE OUTPUT
- 9 COMPUTER SET-UP
- 10 Input settings
- 11 Output settings
- 12 RECORDING SOFTWARE SETTINGS
- 13 IMPORTANT NOTICE
- 14 SPECIFICATION
- 15 Documents / Resources
 - 15.1 References
- 16 Related Posts

WHAT'S IN THE BOX?

- 1 X Microphone
- 1 X Desk Stand
- 1 X 6.56' Type A to Type B USB Cable
- 1 X User's Manual

CONTACT US

Get Social: 
Facebook page: <http://bit.ly/FifinePage>


Contact Info:
Email: web@fifine.cc

More product inquiries can be found on the website.
Company Website: <https://fifinemicrophone.com/>

WARRANTY

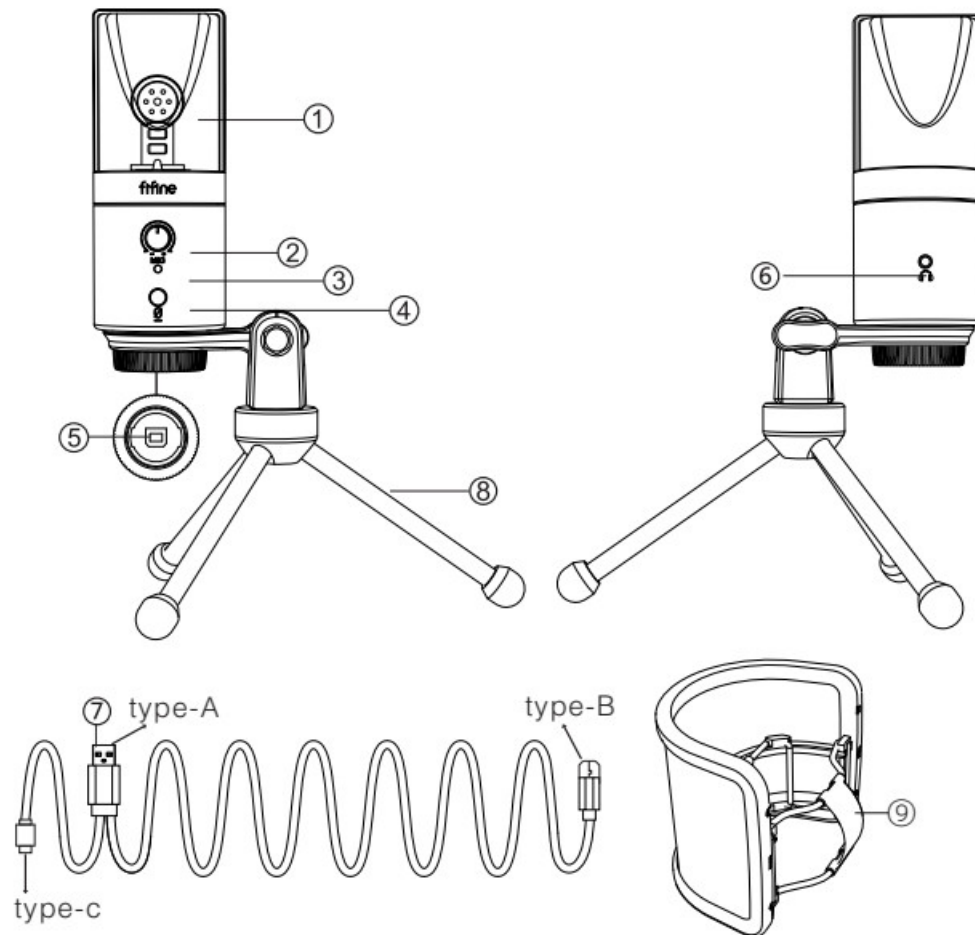
Fifine microphone warrants its hardware product defects in materials and workmanship for a period of one year from the date of original retail purchase, provided the purchase was made from an authorized Fifine microphone dealer. This warranty is void if the equipment is altered, misused, mishandled, suffers excessive wear, or is serviced by any parties not authorized by Fifine Microphone. For warranty service, contact your local distributor or web@fifine.cc

PRODUCT DESCRIPTION

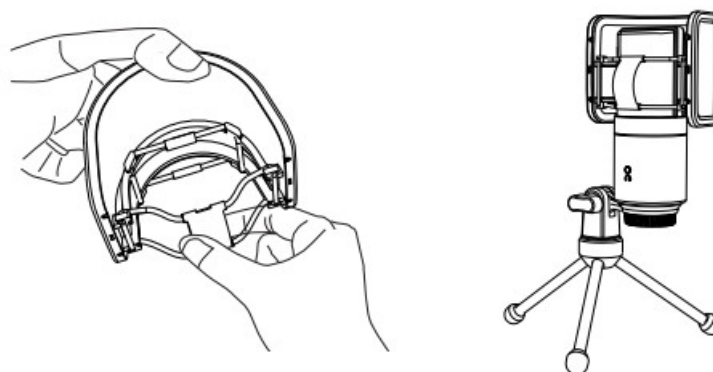
1. Mic Capsule – Condenser microphone element with the cardioid polar pattern.
2. Microphone Gain – Adjust the sensitivity of the mic. Turn the knob right to increase the level, and left to reduce

the level.

3. LED Indicator – Greenlight when the mic is on, and red light when the mic is muted.
4. Mute Button – Press the button to mute/unmute the output of the microphone .
5. USB Output – USB B connector for connecting with your PC or Mac computer.
6. Headphone Jack – 1/8" (3.5 mm) stereo jack for monitoring and playback.
7. USB Cable (6.56') – Type A to Type B USB Cable.
8. Stand
9. Pop Filter – Filter out the harsh 'p', 't', and 'b' sounds.

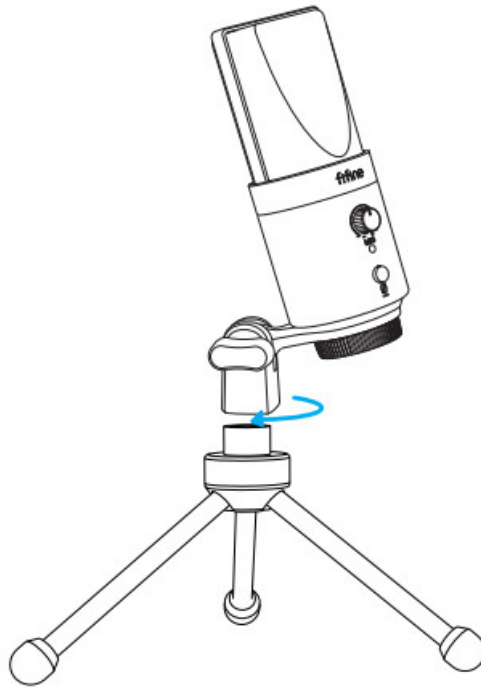


POP FILTER

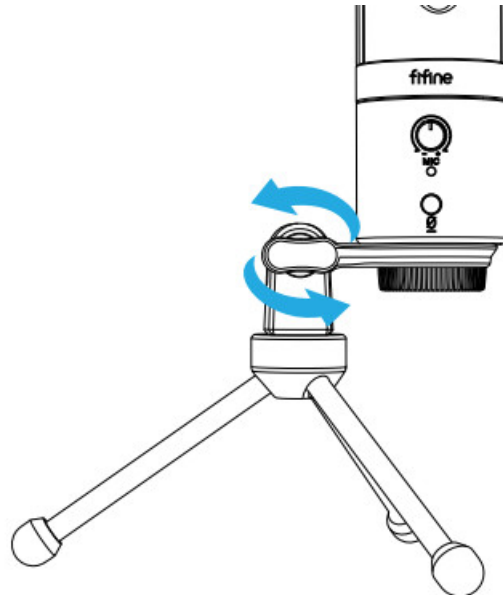


Using the included pop filter could filter out the harsh “p”, “t”, and “b” sounds and improve the sound quality.

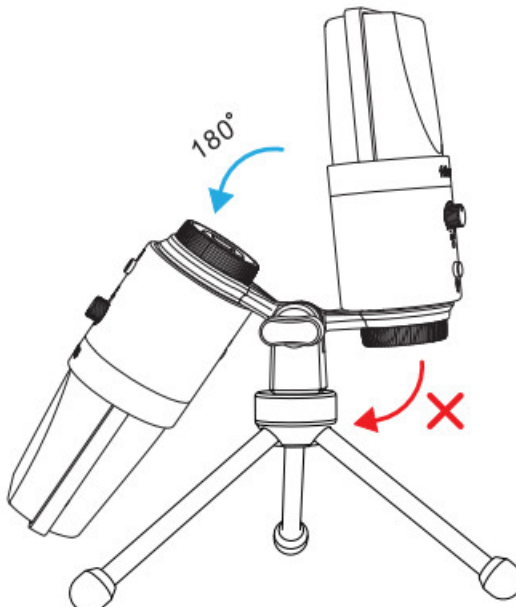
GUIDELINES FOR USE



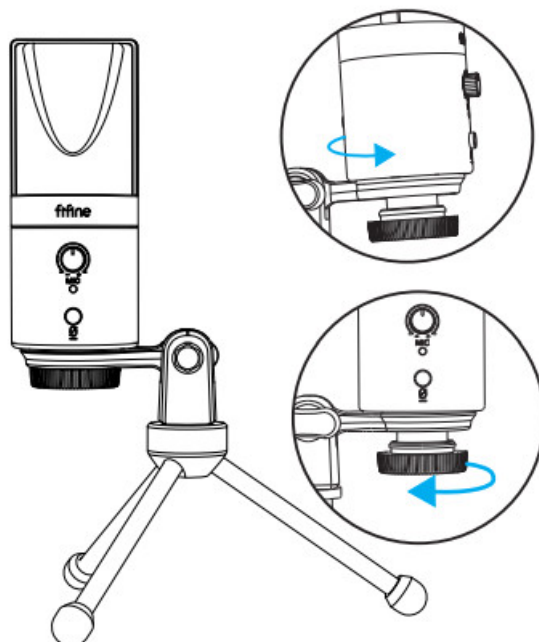
1. Screw the pivot mount onto the top of the metal desk stand.



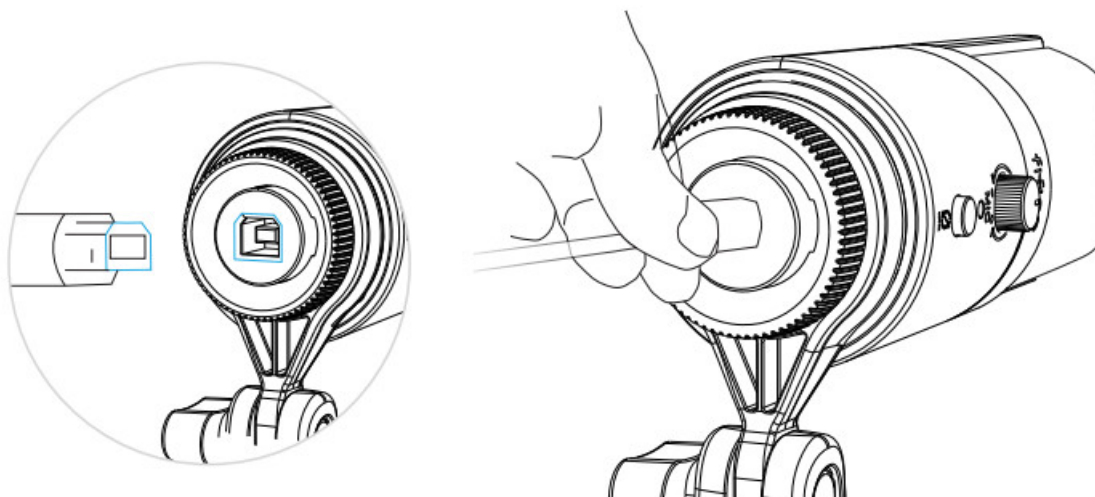
2. If necessary, adjust the mic's angle with the thumbscrew. (Turn left to loosen, turn right to tighten.)



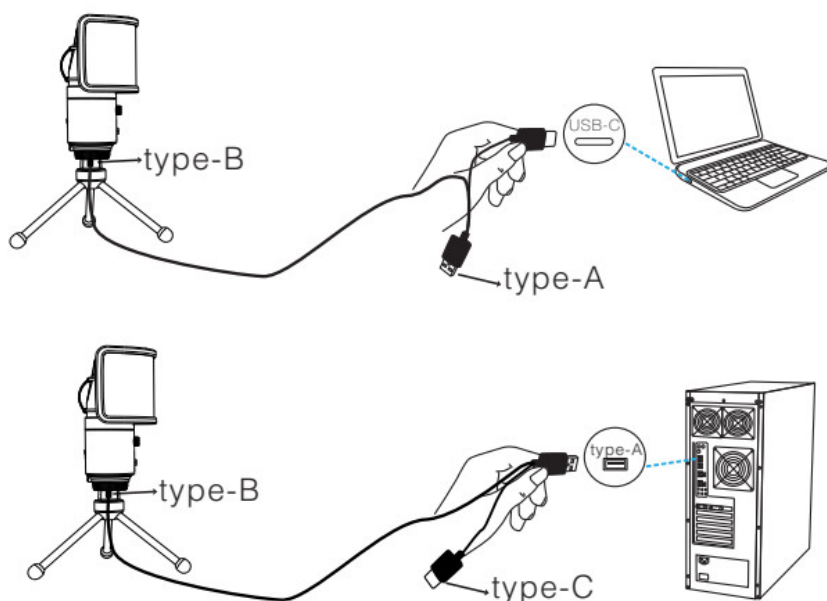
3. Please adjust the mic counterclockwise. Adjusting the mic clockwise will break the bracket easily.



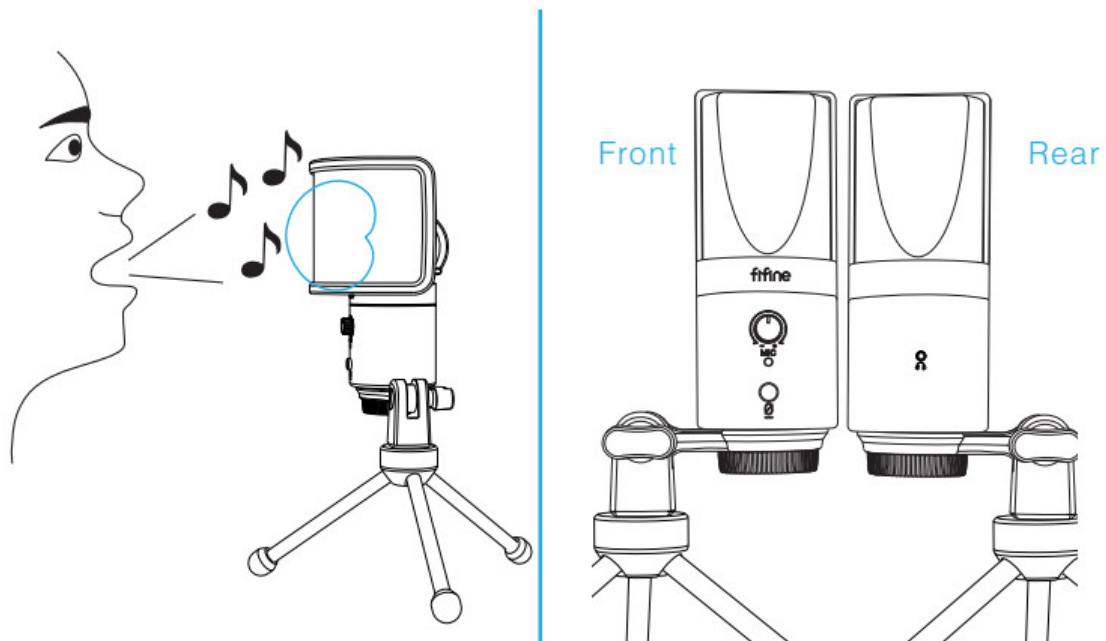
4. Screw the pivot mount to adjust the mic angle 360° horizontally.



5. Tightly plug the provided USB cable into the USB output at the bottom of the microphone.



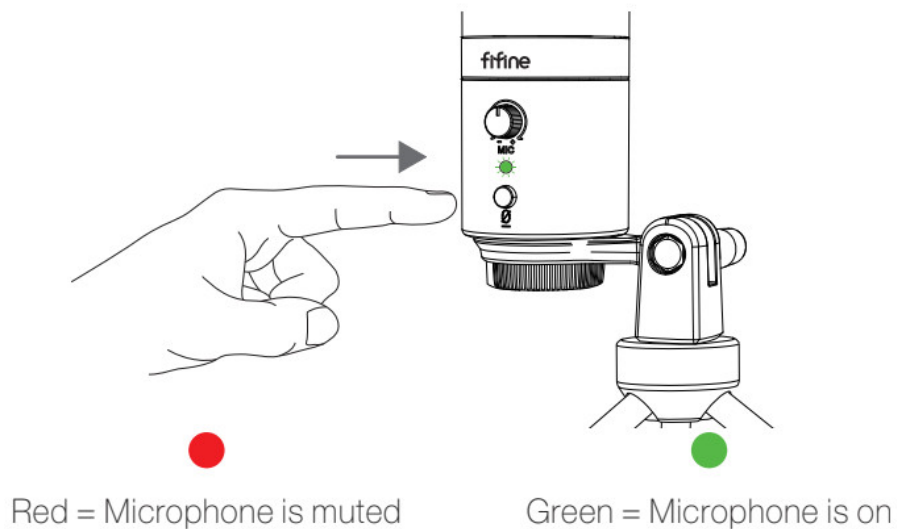
6. Plug the USB A connector OR USB C connector into the USB port of your computer. It depends on what kind of available USB ports there are on your computer.



7. Always keep the front of the mic (the side with the Fifine logo) facing the sound source. Do not speak or sing facing the rear of the mic (the side with the headphone jack).

MUTE BUTTON

Press the button to mute/unmute the mic.



Make sure the LED light is green when you are going to use the mic.

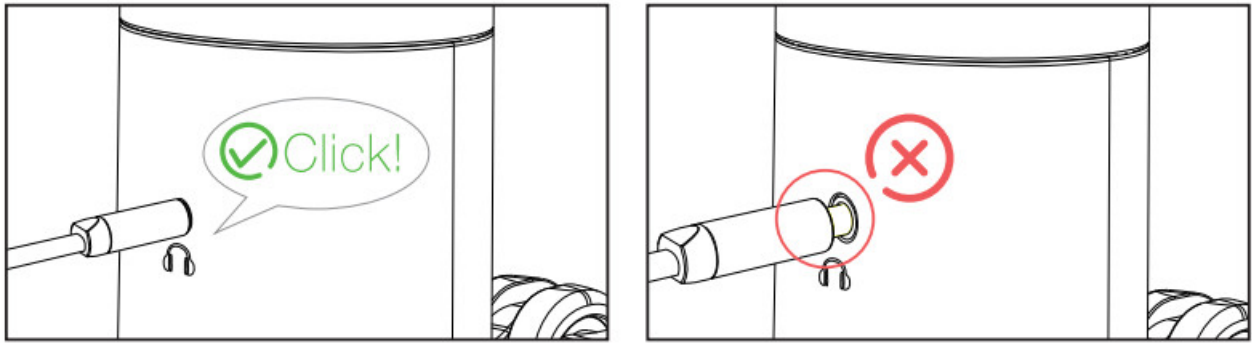
HEADPHONE OUTPUT

The K683 mic includes a standard 1/8" (3.5mm) headphone jack for monitoring and playback.

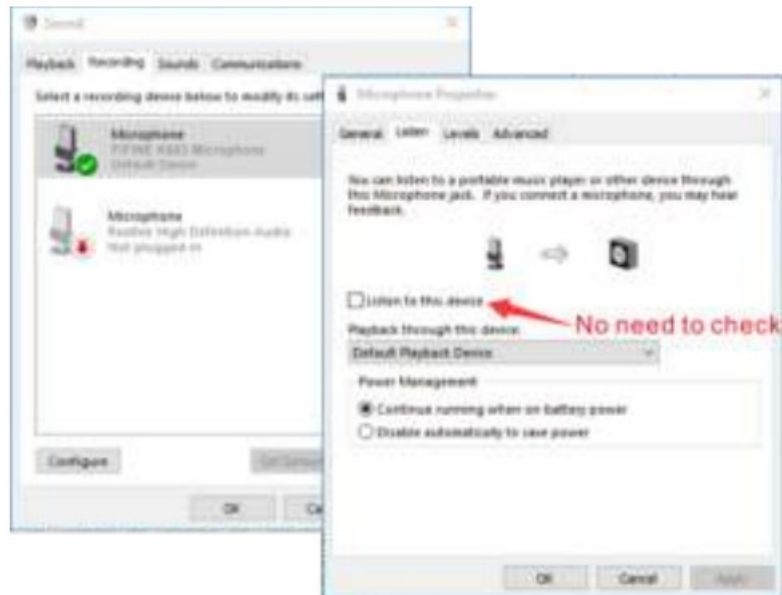
After you connect the mic to your computer and confirm it's the default input/output device of your computer, you can plug your headphone into the headphone jack of the mic to monitor your voice in real-time or listen to the playback/computer audio.

Note:

1. Make sure to plug your headphone into the headphone jack of microphone fully.



- When the mic is on (the LED light is green) and you don't turn the Mic Gain to zero, you will hear your voice at once. No need to log in to any recording software (Apple-Macintosh systems) or click "listen to this Device". (Windows systems).



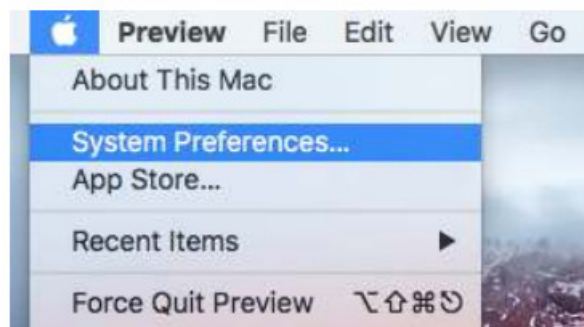
COMPUTER SET-UP

Apple MAC OS

- Hook up the mic to the computer. The LED indicator will turn green at once, which means the mic is on. (If the LED is red, press the mute button to change the light to green.) Your computer will automatically install the driver of the mic.

There may be no pop-up message reminding this process though.

- Go to the System Preferences.



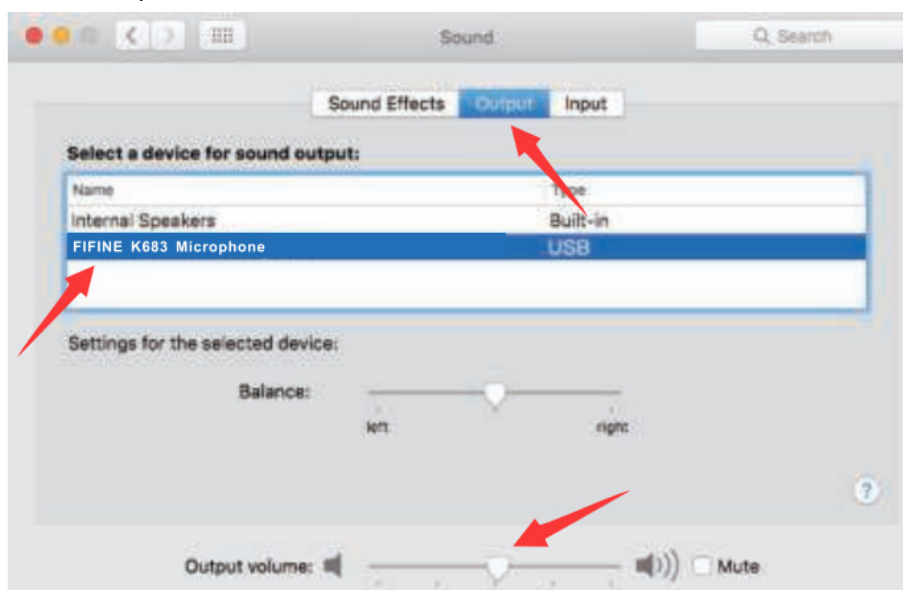
- Click Sound to display the Sound preference pane.



4. Click the Input tab and select the “FIFINE K683 Microphone” as the device for sound input.



5. You can monitor the mic once you connect your headphone to the jack on the mic. If you want to hear the computer audio and monitor the mic from your headphone, please click the Output tab and select the “FIFINE K683 Microphone” as an output device.



NOTICE:

- If your Mac only has a USB C port, please connect the mic to it via the USB C connector of the included USB cable.
- The K683 mic will become the default output device automatically when it plugs into the Mac. Please change the output device to the Internal Speakers if you come accross the following issues.
 - 1) The system music suddenly stops once you plug the mic into the computer.
 - 2) On a voice chat or video calls the others can hear you when using a microphone but you cannot hear them.
 - 3) There is no sound output from the computer when you listen to the playback of the recording.

But you could not monitor the mic in this situation unless you start a recording app and choose the monitor function of the app.

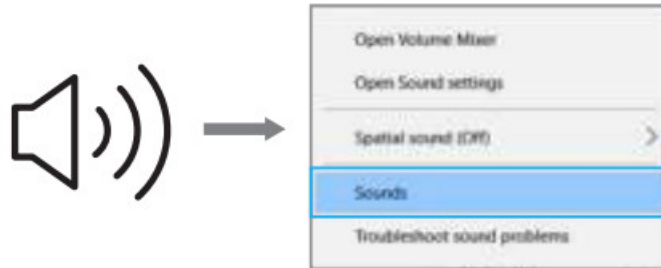
Windows

Input settings

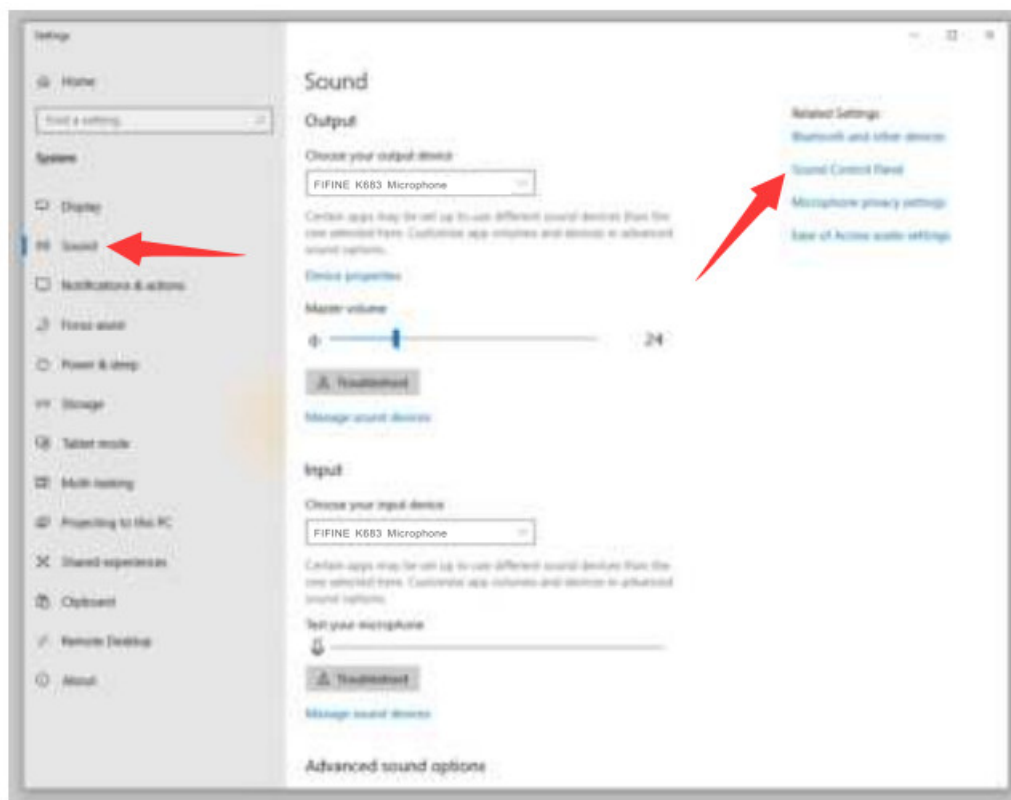
Hook up the mic to the computer. The LED indicator will turn green at once, which means the mic is on. (If the LED is red, press the mute button to change the light to green.) Your computer will automatically install the driver of the mic.

There may be no pop-up message reminding this process though.

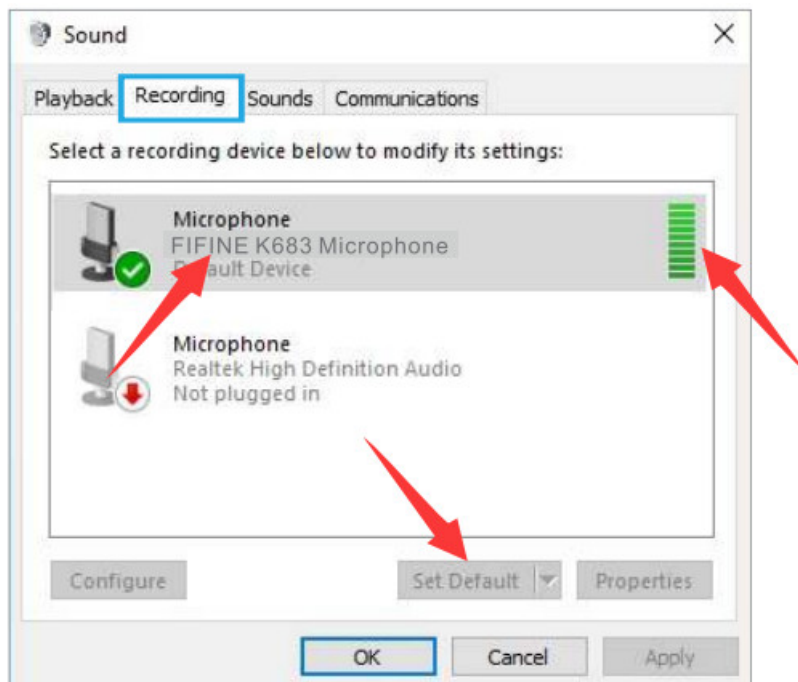
1. Right-click the speaker icon at the bottom right of the screen. Click “Sounds” or “Open Sound Settings”.



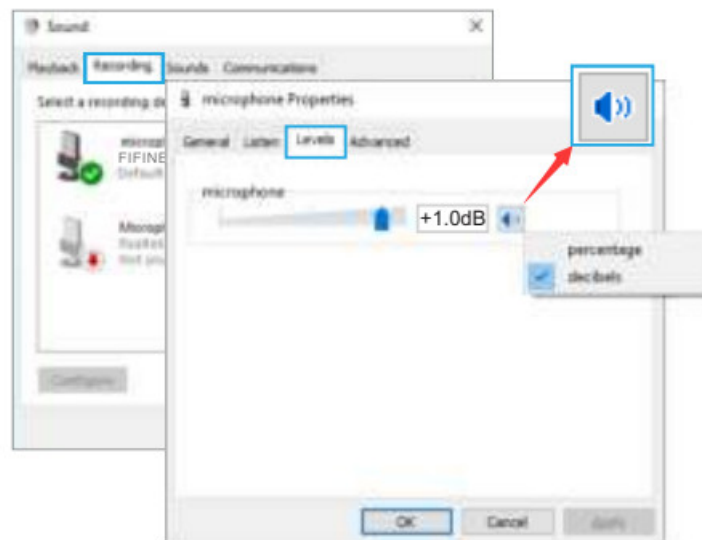
2. Click the Sound control panel.



3. Click the Recording tab, and choose “FIFINE K683 Microphone” as the default device. When you speak into the mic, the volume meter will turn green and bounce. If it remains unchanged, please reset the computer and replug the mic in the available USB ports of the computer.



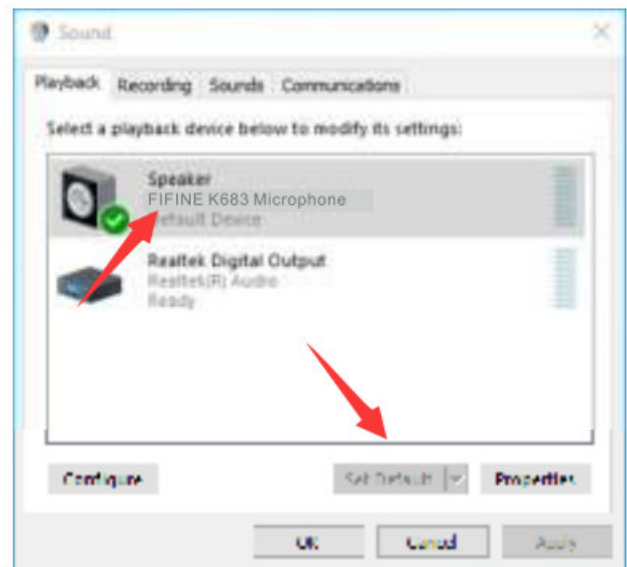
4. Adjust input volume – Double click the “FIFINE K683 Microphone” to open the Microphone Properties window. Right-click the speaker icon under the Levels tab change to decibels from percentage. To get the best sound of the mic, please adjust the mic level during this range (0dB to 1dB) when your speaker output is set to maximum.



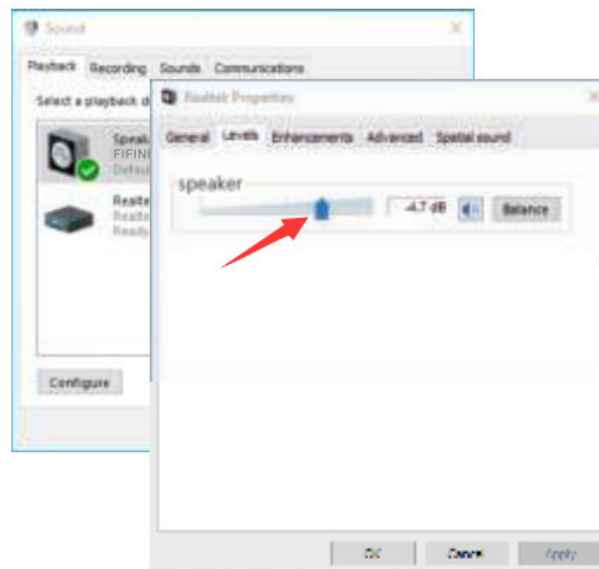
Note: Make sure that the mic gain knob is not turned to zero.

Output settings

1. Output the computer audio from the 3.5mm jack on the mic.
 - a. Please plug headphones in the headphone jack on the rear of the K683 mic.
 Click the “Playback” tab from the Sound pane, and select “FIFINE K683 Microphone” as the default output device.

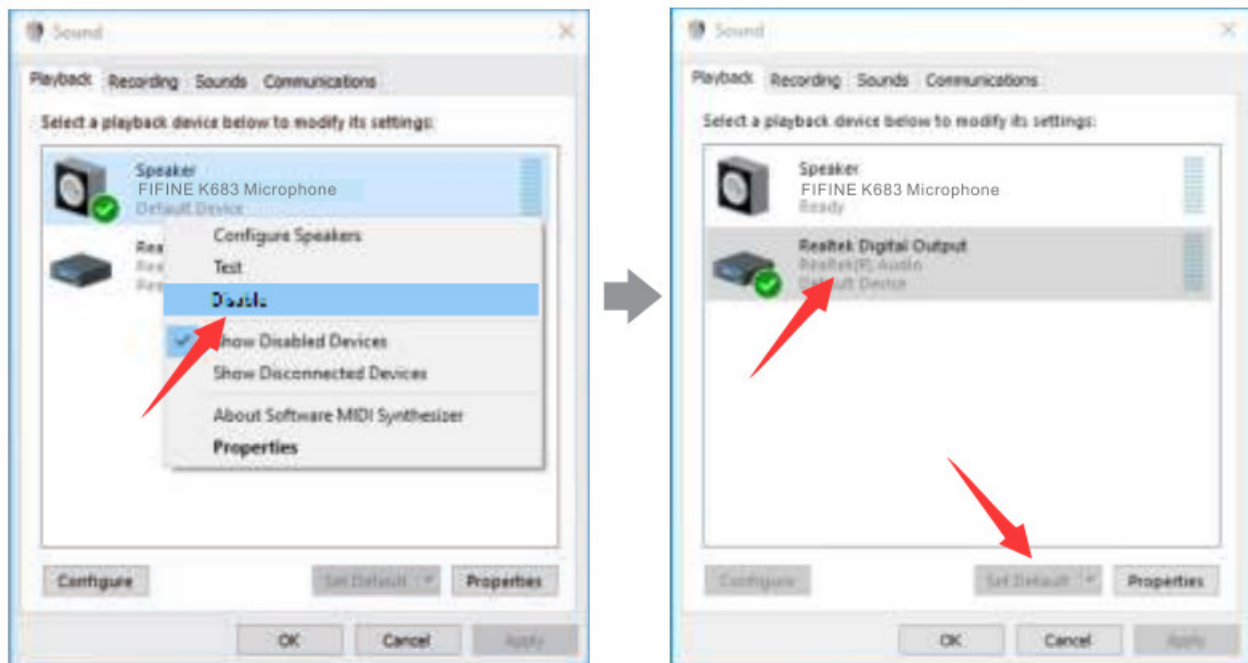


b. Click the speaker (FIFINE K683 Microphone) – Properties – Levels, and drag the progress bar to adjust the volume of output.

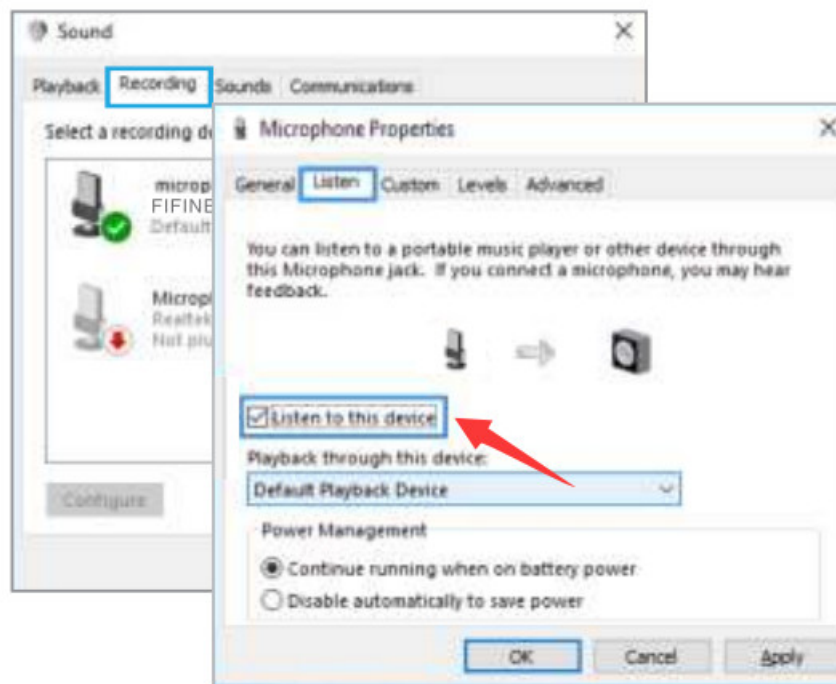


2. Output audio from the computer.

a. Click the “Playback” tab from the Sound pane, and select “Realtek High Definition Audio” as the default output device. Then you will hear the computer audio.



b. If you also want to monitor your mic, please click the “Recording” tab and click the FIFINE K683 Microphone -Properties – Listen – check the box “Listen to this device” – Apply.



c. Click the speaker that is being used – Properties – Levels, drag the progress bar to adjust the volume of output.



Note: (Applicable for MAC and Windows)

1. If the computer prompts that it's unable to identify this USB device, please restart the computer and replug the microphone into another USB port.
2. Check off the box “Listen to this device” when you are using any recording software or charting software (such as Skype), or you would hear double audio just like an echo.
3. If the mic is recognized but no sound coming out, please check whether System Sound is mute and whether you have turned the knob on the mic to a minimum. Make sure the LED indicator is green (which means the

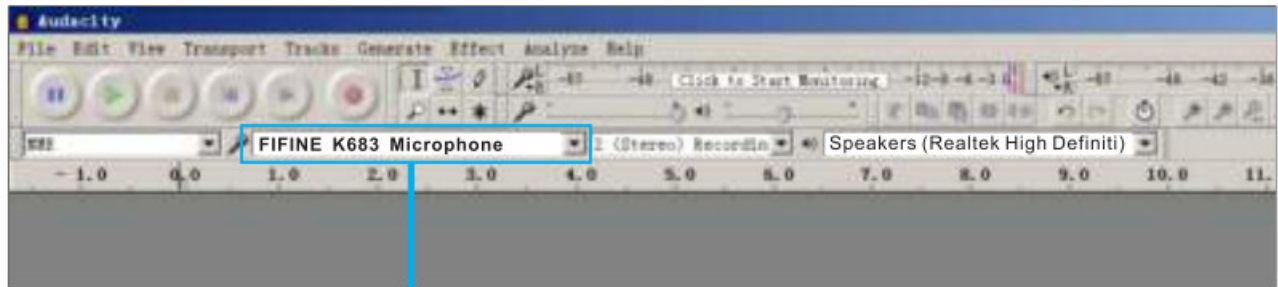
microphone's on).

4. If your computer runs Windows 10, please go to settings > privacy > microphone and click the Allow apps to access the microphone to ON then restart.

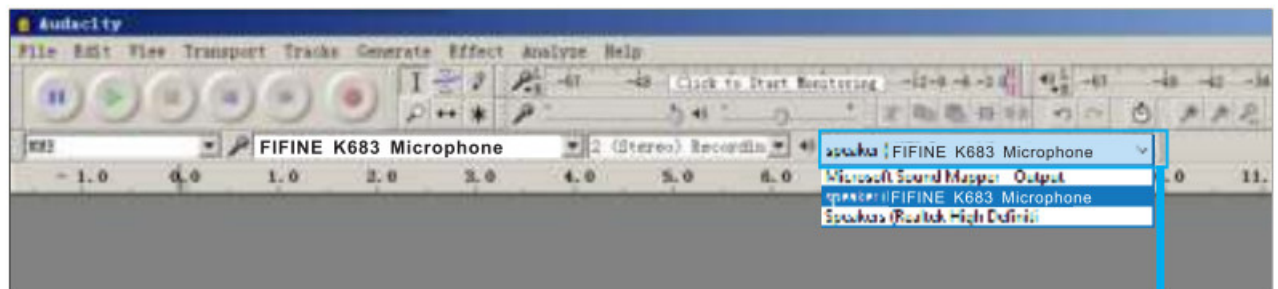
RECORDING SOFTWARE SETTINGS

1. Pls, select "FIFINE K683 Microphone" as the input device from the setting when using recording software. Take Audacity for example.

If you monitor your audio from the headphone jack of the computer, please select "Realtek High Definition Audio" as an output device. If you monitor from the mic headphone jack, select the FIFINE K683 Microphone as output.



Input: FIFINE K683 Microphone

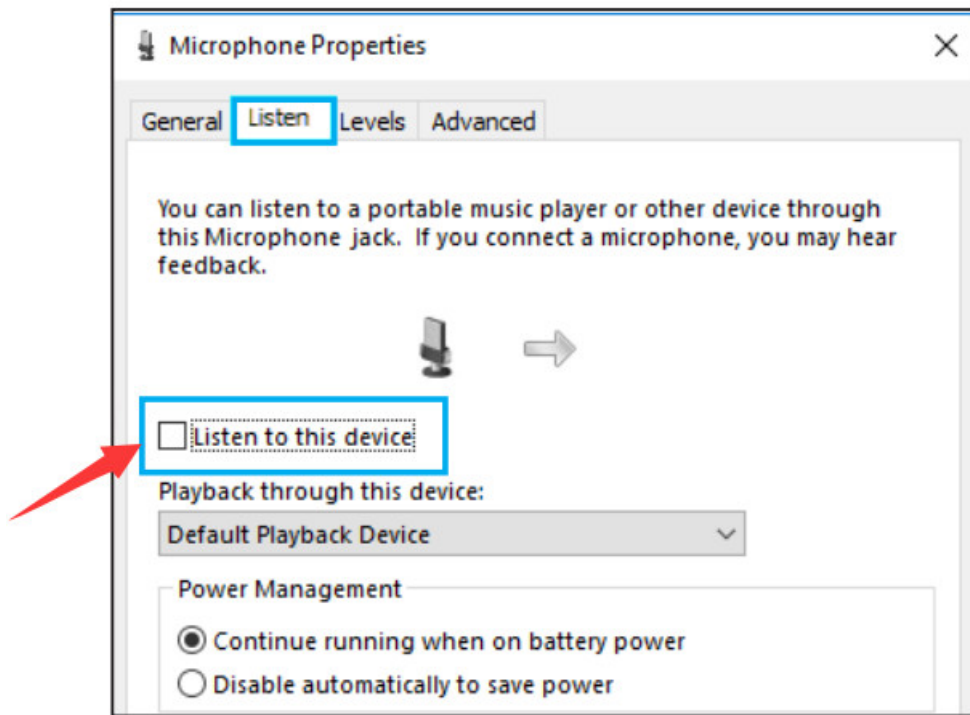


Output: Pls choose correct output



Note: If the recording software (such as Audacity) doesn't recognize the mic, please log out the software first, replug the mic in the computer and launch the software again. Then the mic will be in the drop-down option of the input device.

2. Make sure to check off the box "Listen to this device" from the sound system when you are using any recording software, or else you would hear a duet of yourself just like too much echo.



3. There are several ways to improve the recording by using Audacity. Come to <https://fifinemicrophone.com/blogs/news> to search for a better solution or SEARCH WIDGET for your interesting subject in our blogs.
4. For windows computers, we recommend using Audacity. For Apple computers, you can use the QuickTime Player to test the recording.

IMPORTANT NOTICE

- Setting the volume levels

Correct adjustment of microphone level is important for optimum performance. Ideally, the microphone level should be as high as possible without overloading the input of your computer.

If you hear distortion, or if your recording program shows levels that are consistently overloaded (at peak levels), turn the microphone gain (or level) down, either through the knob on the mic, the system settings or through your recording software. If your recording program shows an insufficient level, you can increase the microphone gain either through the knob on the mic, the system settings or through your recording software.

- Selecting software

You have many choices in recording software. Audacity, available for free online at <http://audacity.sourceforge.net/> is a widely used software.

Note: You need to plug the mic in the computer first and then launch the recording software. The software may not recognize the mic if you plug the mic into the computer after you have launched the software.

- Positioning your microphone

To achieve the best frequency response, it is important to have the mic capsule (the side with the mute button) pointed at the user's mouth, instrument, or any other sound source.

For speaking/singing applications, the ideal position of the microphone is directly in front of the person who is speaking/singing. The same position is optimal when making an instrument such as an acoustic guitar, drums, or piano. Test the mic in different positions to find the best sound for your particular setup.

- Protecting your microphone

Avoid leaving your microphone in the open air or in areas where temperatures exceed 110° F (43° C) for

extended periods. Extremely high humidity should also be avoided.


Choose your output setting

When you plug the microphone into your PC, it cancels the audio from any other audio file played or there's no sound on the playback, you need to manually select the "speaker (Realtek High Definition Audio)" as the default playback device if you want to output computer audio via the computer built-in speaker.


SPECIFICATION

Power Supply:	5V
Operating Current:	34mA
Polar Pattern:	Uni-directional
Frequency Response:	50Hz-17kHz
Sensitivity:	-43dB±3dB (at 1kHz)
Equivalent Noise Level:	66dB
Dynamic Range:	75dB
S/N Ratio:	71dB
Sampling Rate:	192kHz/24bit

Documents / Resources

	FIFINE K683A Type C USB Condenser Microphone [pdf] User Guide K683A, Type C USB Condenser Microphone, K683A Type C USB Condenser Microphone
--	--

References

-  [Audacity download | SourceForge.net](#)
-  [Log into Facebook | Facebook](#)
-  [FIFINE | Gaming RGB Mics | Recording Mics | Wireless Systems](#)
-  [News | FIFINE MICROPHONE](#)