

fifine
AM8 XLR Dynamic
Microphone



fifine AM8 XLR Dynamic Microphone User Guide

[Home](#) » [fifine](#) » fifine AM8 XLR Dynamic Microphone User Guide 

Contents

- 1 [fifine AM8 XLR Dynamic Microphone](#)
- 2 [WHAT'S IN THE BOX](#)
- 3 [PRODUCT DESCRIPTION](#)
- 4 [GUIDELINES FOR USE](#)
- 5 [FUNCTION KEY INSTRUCTION](#)
- 6 [SPECIFICATION](#)
- 7 [WARRANTY](#)
- 8 [CERTIFICATION](#)
- 9 [Documents / Resources](#)
 - 9.1 [References](#)

fifine

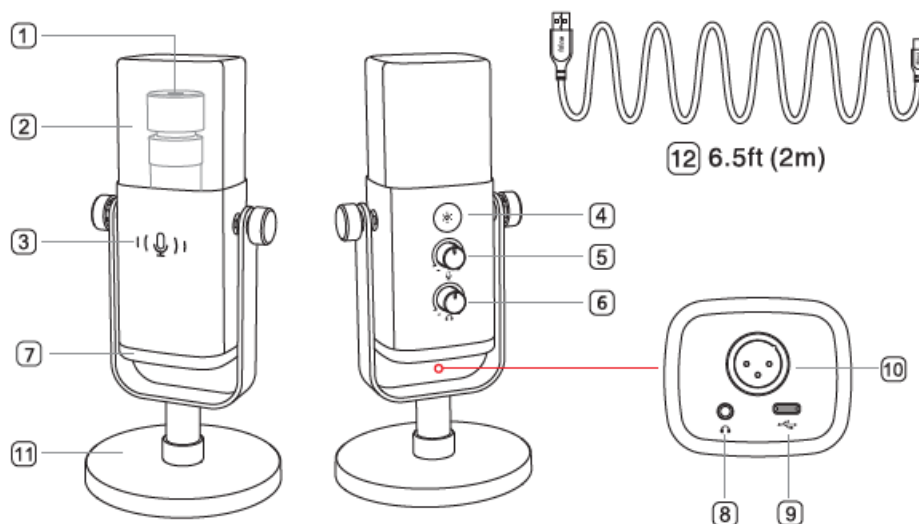
fifine AM8 XLR Dynamic Microphone



WHAT'S IN THE BOX

- 1X Dynamic Microphone with Windscreen
- 1X 6.5ft (2m) USB Cable
- 1X Mic Based Stand
- 1X User's Manual

PRODUCT DESCRIPTION



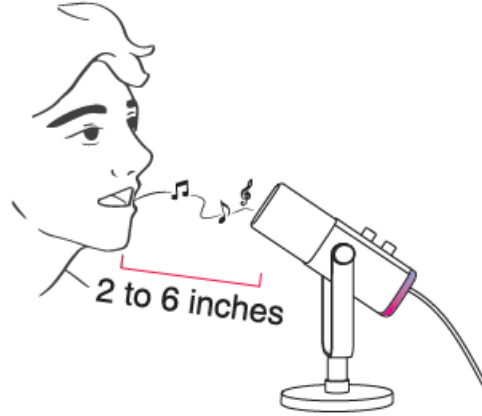
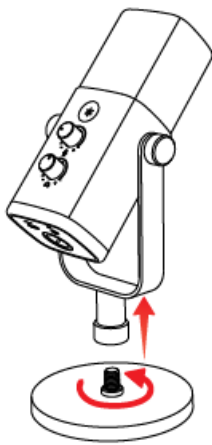
1. Dynamic Microphone Capsule
2. Flocking Windscreen
3. Mute Button and LED Indicator
4. RGB Button
5. Microphone Gain

6. Headphones Volume Control
7. RGB Lighting
8. Headphone Jack
9. Type-C Port
10. XLR Port
11. Mic Based Stand
12. USB Cable

GUIDELINES FOR USE

Installation and Use

- Screw the base stand (INCLUDED) or arm stand (NOT INCLUDED) into the microphone until they are firmly connected. AM8 is an end-addressing dynamic microphone. Always keep the top of the mic facing the audio source.



USB-C Port Connection

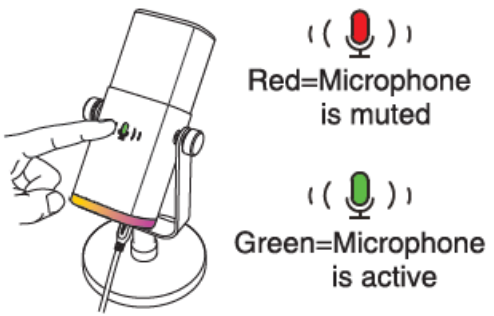
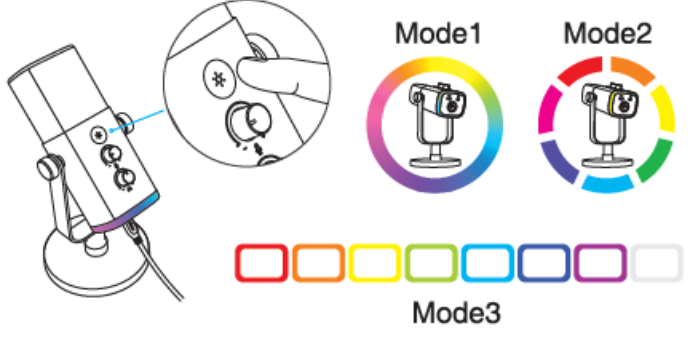
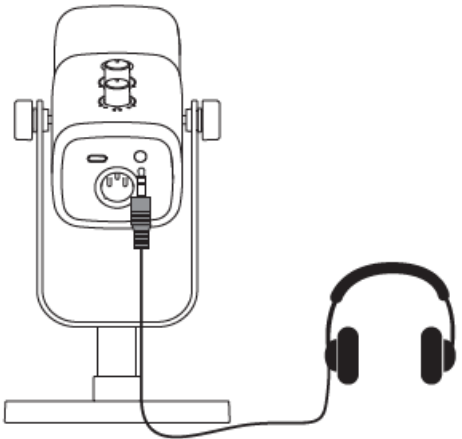
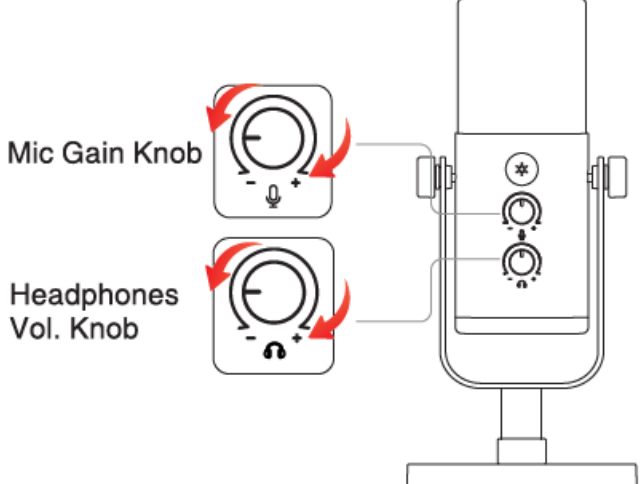
- Connect the microphone to the computer or PS4/PS5 via the USB cable (INCLUDED).

XLR Port Connection

- Connect the microphone to a mixer or audio interface via the XLR cable (NOT INCLUDED). No preamp or phantom power is needed.

Tips: All the function keys and headphones monitoring on the mic are only available when using a USB-C port connection, but invalid when using an XLR port connection.

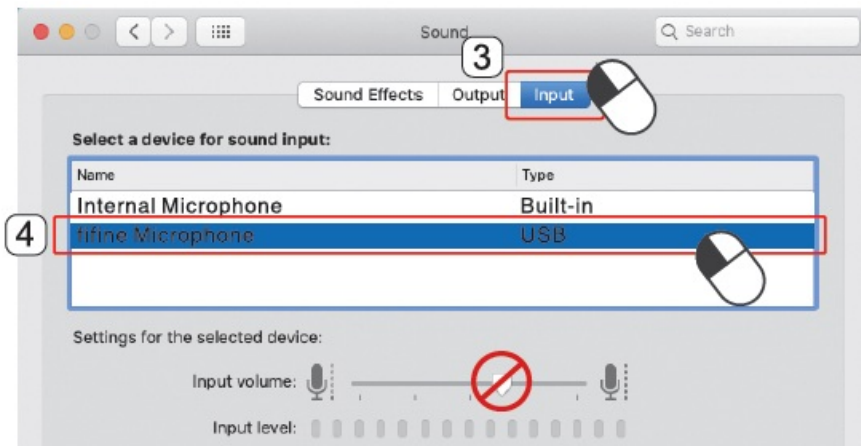
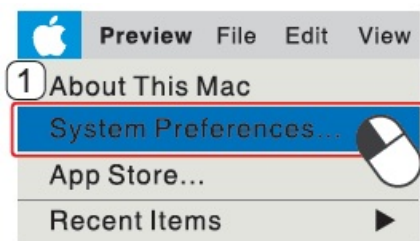
FUNCTION KEY INSTRUCTION

<p>► Mute Button</p> 	<p>► RGB Button Long press and hold for 3 seconds to turn on or off RGB. Tap it to select RGB modes or colors.</p> 
<p>► Headphone Jack</p> 	<p>► Microphone Gain and Headphone Volume Control</p> 

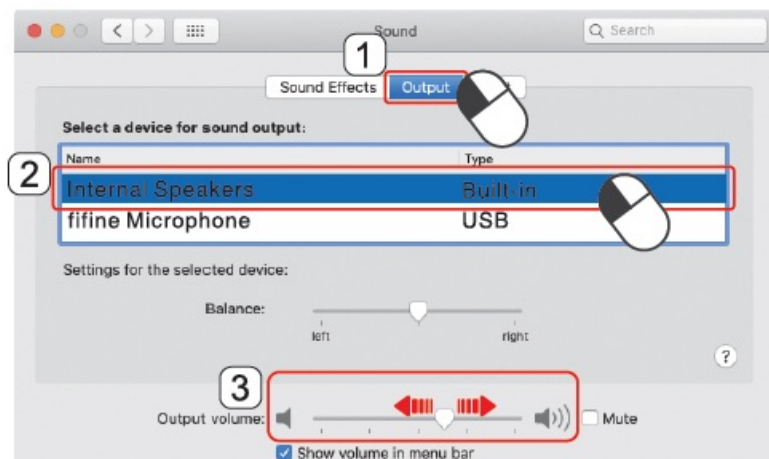
COMPUTER SET-UP (MAC OS & WINDOWS)

- APPLE MAC OS (Only Applicable for USB Connection)

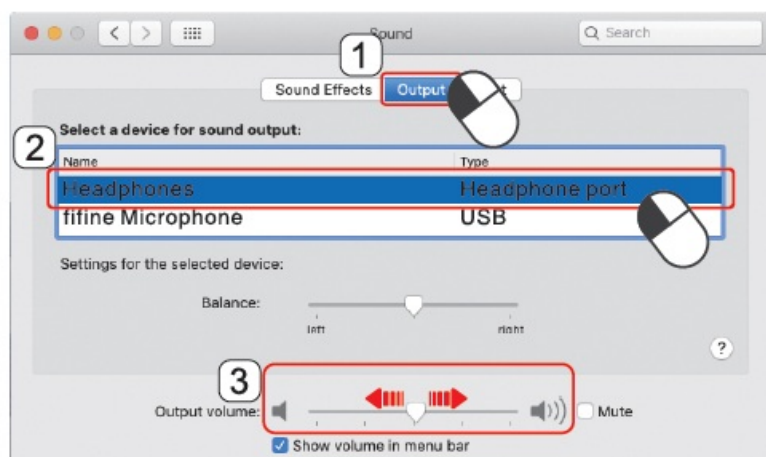
Input Settings



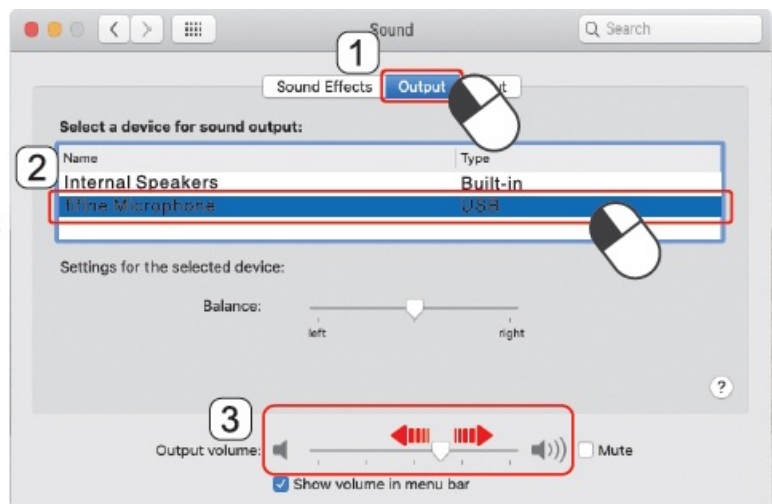
- Output Settings
- Output the audio from Internal Speakers



Output the audio from Headphones

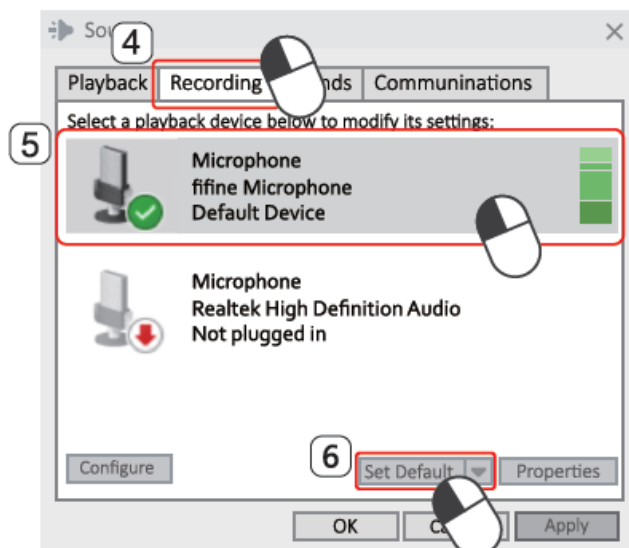
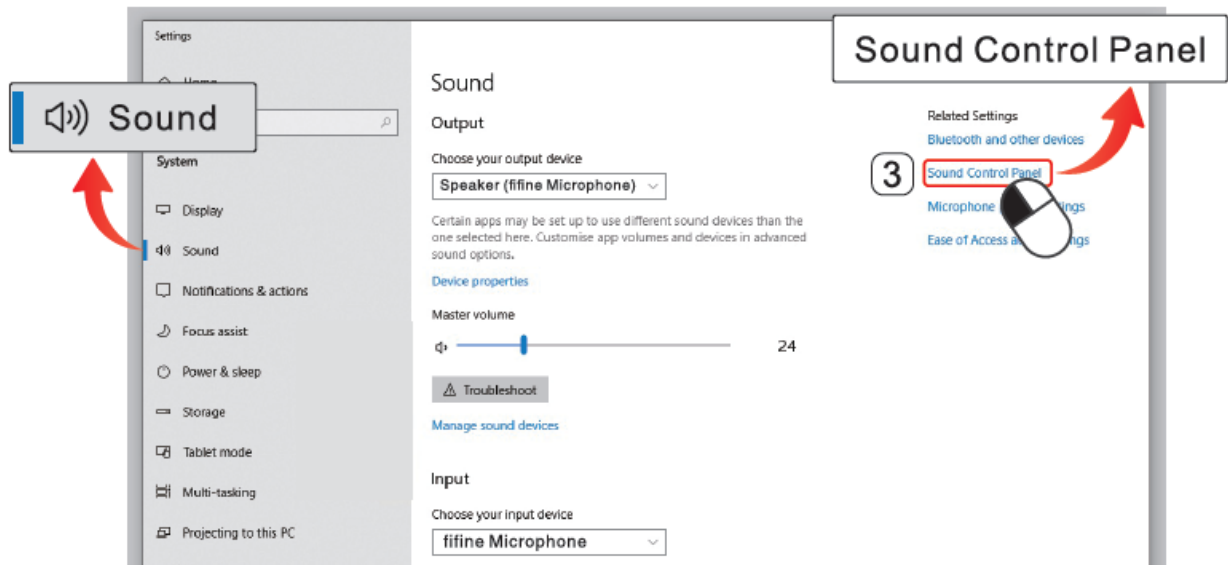
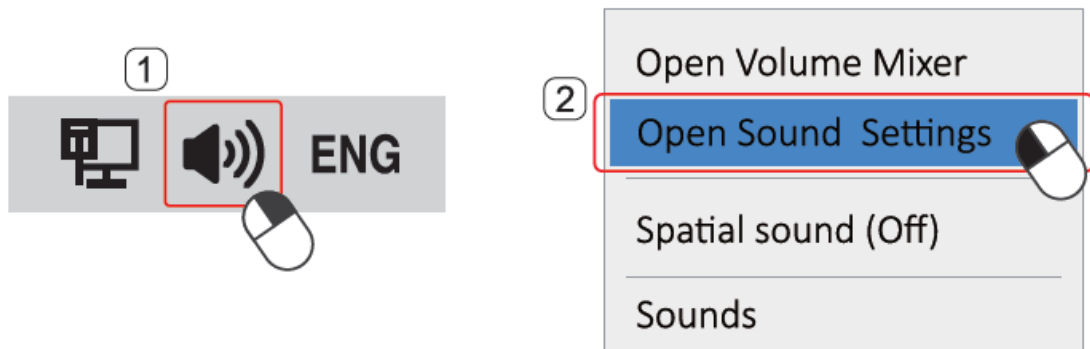


- Output the audio from the mic



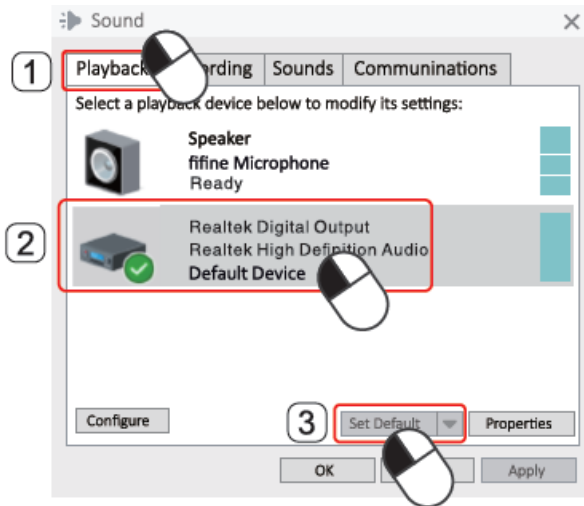
Windows (Only Applicable for USB Connection)

- Input Settings

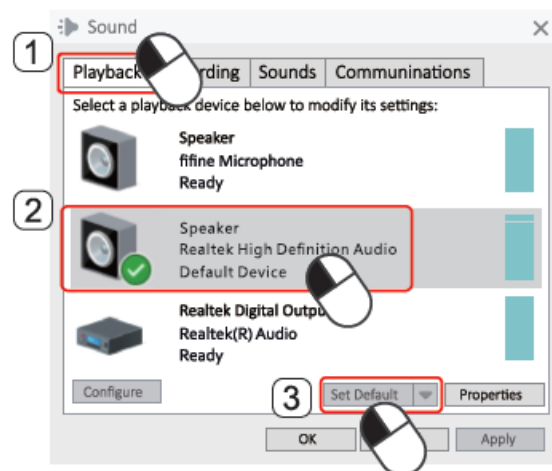


Output Settings

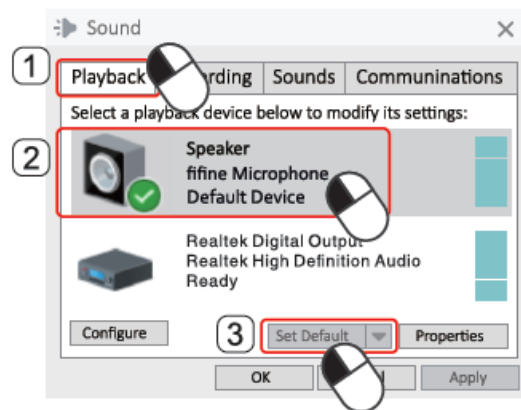
- Output the audio from the built-in speaker



- Output the audio from headphones



- Output the audio from mic



Tips

1. "Speaker Properties" "Level"-Make sure to turn on the "speaker icon" under "Microphone" before monitoring the mic
2. Manually select the "speaker (Realtek High Definition Audio)" as the default playback device, if you want to

output computer audio via the computer built-in speaker.

3. There is no XLR cable included.
4. Microphone input volume can not be adjusted by computer setting
5. Select “fine Microphone” as the input device from the setting when using recording software.

SPECIFICATION

- Model Number: AM8
- Element: Dynamic
- Polar Pattern: Cardioid
- Connector: USB-C and XLR
- Frequency Range: 50Hz-16KHz
- S/N Ratio: >80dB
- Sensitivity: -50+3dB
- Maximum SPL: 120dB
- Power Supply: 5+0.25V

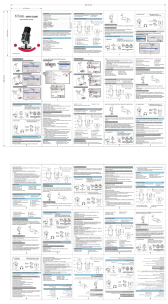
WARRANTY

- Every Ffine product comes with a Limited Warranty that in normal use of product will be free of any defects in material or workmanship for a period of one year from its original date of purchase.
- For detailed warranty info, please refer to the warranty policy on our website, or contact us directly.

CERTIFICATION

- Eligible to bear CE Marking.
- Authorized European Representative:
 - Name: AOCE INFORMATION TECHNOLOGY
 - Address: 61 rue de Lyon 75012 Paris France
 - Tel: +33-633297410
- Authorized British Representative:
 - Name: AOCE LIMITED
 - Address: Office Suite 29a 3/F 23 Wharf Street, London,
England, SE8 3GG
 - Tel: +44-759 7659 775

Documents / Resources



[fifine AM8 XLR Dynamic Microphone](#) [pdf] User Guide
AM8 XLR Dynamic Microphone, AM8, XLR Dynamic Microphone, Dynamic Microphone, Microp
hone

References

- [User Manual](#)

Manuals+. Privacy Policy

This website is an independent publication and is neither affiliated with nor endorsed by any of the trademark owners. The "Bluetooth®" word mark and logos are registered trademarks owned by Bluetooth SIG, Inc. The "Wi-Fi®" word mark and logos are registered trademarks owned by the Wi-Fi Alliance. Any use of these marks on this website does not imply any affiliation with or endorsement.