




FIELDMANN 2505 E Electric String Trimmer User Manual

[Home](#) » [FIELDMANN](#) » FIELDMANN 2505 E Electric String Trimmer User Manual 

FIELDMANN 2505 E Electric String Trimmer User Manual



Contents

1 GENERAL SAFETY INSTRUCTIONS

1.1 Important safety notice

1.2 Packaging

1.3 Operating instructions

2 EXPLANATION OF INSTRUCTION LABELS ON THE MACHINE

3 SAFETY INSTRUCTIONS

4 DESCRIPTION OF THE MACHINE

5 ASSEMBLY

6 STARTING THE TRIMMER

7 CUTTING

8 MAINTENANCE

9 DISPOSAL

10 DECLARATION OF CONFORMITY

11 TECHNICAL SPECIFICATIONS

12 Documents / Resources

12.1 References

GENERAL SAFETY INSTRUCTIONS

Important safety notice

- Carefully unpack the product and take care not to throw away any part of the packaging before you find all the parts of the product.
- Store the product in a dry place out of reach of children.
- Read all warnings and instructions. Not following warnings or instructions may lead to injury by electrical shock, a fire and/or serious injuries.

Packaging

The product is packed in a package that prevents damage during transport. This package is a resource and so can be handed over for recycling

Operating instructions

Before you start working with the power tool, read the following safety and usage instructions. Understand the operating elements and the correct use of the power tool. Keep the user's manual in a safe place where it can be easily retrieved for future use. Save the original packaging, including the internal packing material, warranty card and proof of purchase receipt, at least for the duration of the warranty. If you need to ship this power tool, pack it in the original cardboard box to ensure maximum protection during shipping or transport (e.g. when moving or when you need to send this power tool for repair to a service centre).

Note: If you hand over the power tool to somebody else, do so together with this user's manual. Following the instructions in the included user's manual is a prerequisite for the proper use of the tool. The user's manual also contains operating, maintenance and repair instructions.

The manufacturer takes no responsibility for accidents or damages resulting from not following the instructions in this manual.

EXPLANATION OF INSTRUCTION LABELS ON THE MACHINE

-  Warning!
-  Read the user's manual before using.
-  Keep other persons at a sufficient distance away!
-  Do not use in rain or in wet conditions.
-  Always wear eye protection.
-  While working use protective gloves.
-  Use solid insulating work footwear.
-  Use hearing protection.
-  In the event that the power cord is damaged, immediately disconnect it from the power supply
-  DANGER! Do not use the power tool if there are children, other persons or animals in your vicinity.
-  Be careful not to be hit by deflect objects.

SAFETY INSTRUCTIONS



ATTENTION!

Adhere to safety rules when using this power tool. For your safety and the safety of other people, please carefully read these instructions before using this power tool. Please store these instructions for possible future reference.

- Wear safety glasses when working with this power tool.
- Wear gloves when working with this power tool.
- Do not expose this power tool to rain or high moisture/humidity.
- Acquaint yourself with the controls and the correct operation of this string trimmer.
- Never allow children or other persons not acquainted with these instructions to use this string trimmer.

- Prevent children and other persons and pets from approaching this string trimmer as the grass that is being trimmed and is flying around may contain stones or fragments. If there are other people in the vicinity, especially children, stop using the string trimmer.
- When working with the string trimmer, do not permit other persons or pets to come closer than 15 metres.
- Only use the string trimmer during daylight hours or with good artificial lighting.
- Prior to using the string trimmer or after any impact, always inspect it for signs of wear or damage, and repair it if necessary. Do not use the string trimmer if the cutting tool is not properly secured in place or if it is damaged.
- Always check that the string trimmer is in good working order, if not, it may endanger the user.
- Always use protective guards when using the string trimmer.
- Do not use the string trimmer if the protective guards are damaged.
- Remove from the work area all stones, metal pieces, roots, other hard items and plastic bags, nylon string and other items that cannot be cut up.
- Prior to starting the string trimmer, make sure that the nylon cutting edge is not touching stones or fragments.
- Always keep your hands away from the cutting area, especially when starting the motor.
- Protect yourself against injury caused by the cutting edge at the length of the trimming line. After spooling on a new trimming line, always return the string trimmer to its normal operating position before starting it.
- Do not use spare parts or accessories not supplied or recommended by the manufacturer.
- Always ensure that the ventilation openings are free of fragments.
- To prevent accidental start up, do not carry the power tool with a finger on the start/stop trigger.
- Maintain a stable and safe stance when working with the string trimmer.
- Remove wire, stones and fragments from the area where you will be working.
- Do not cut hard items. This could result in injury or damage to the string trimmer



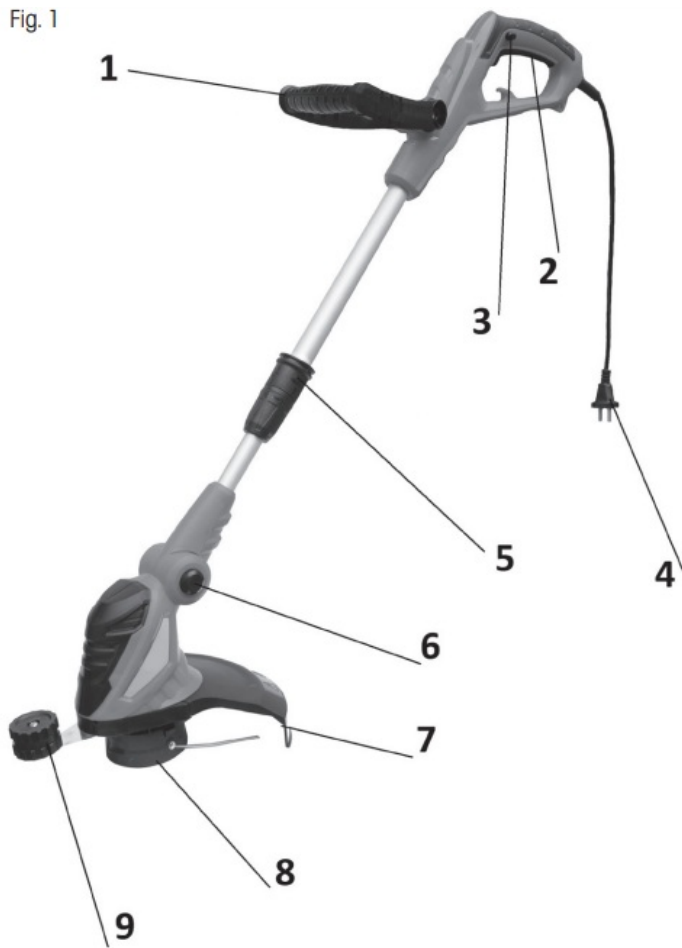
ATTENTION!

Cutting elements continue to rotate even after the motor is turned off!

- Do not attempt to stop the cutting tool (nylon line) using your hands. Always allow it to stop on its own. This applies also for the metal three tooth blade.
- Do not use the string trimmer for cutting grass that is not touching the ground, for example grass on walls or rock gardens, etc.
- Do not pass over sand or gravel paths with the string trimmer still running

DESCRIPTION OF THE MACHINE

Fig. 1

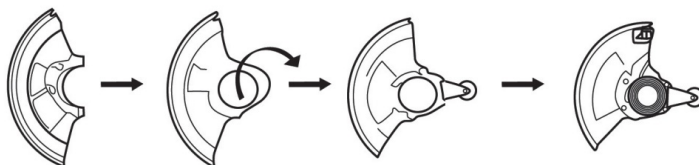


1. Adjustable handle
2. Start/stop trigger
3. Trigger safety lock
4. Power cord
5. Telescopic handle lock
6. Cutter angle adjustment lock
7. String trimmer head cover
8. String trimmer head
9. Protective guide

ASSEMBLY

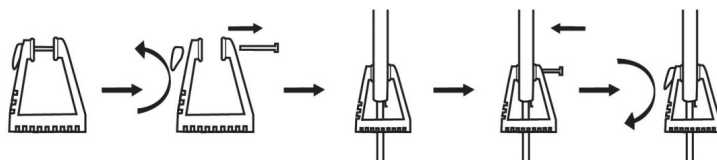
- Unscrew the plastic cover of the string trimmer, connect the protective guide against unwanted cutting of flowers to it and connect the whole cover to the string mower engine, **see Fig 2.**

Fig. 2



- Connect the adjustable handle, see Fig. 3. First remove the screw from the handle, place the handle on the mower and fasten with the screw.

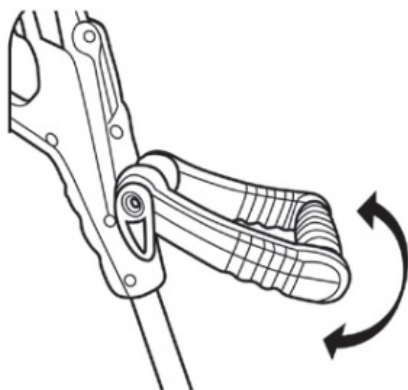
Fig. 3



SETTING THE HANDLE ANGLE

After unlocking the bolt with the quick-release system, adjust the angle of the handle, **see Fig. 4.**

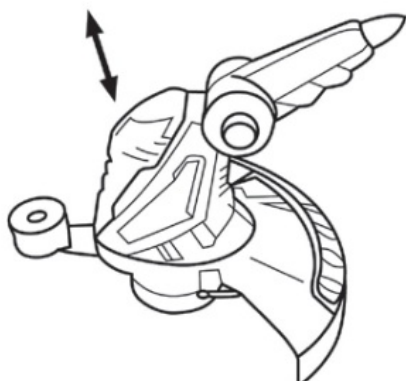
Fig. 4



CUTTING HEAD ANGLE ADJUSTMENT

After pressing the button, see Fig. 5, adjust the cutting head angle

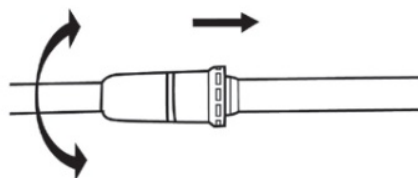
Fig. 5



ADJUST THE BEST LENGTH OF THE STRING MOWER

After unlocking the telescopic rod lock, see Fig. 6, adjust the mower to the operator height

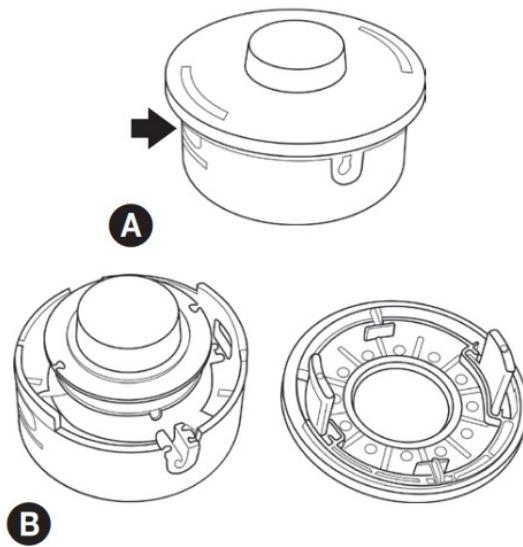
Fig. 6



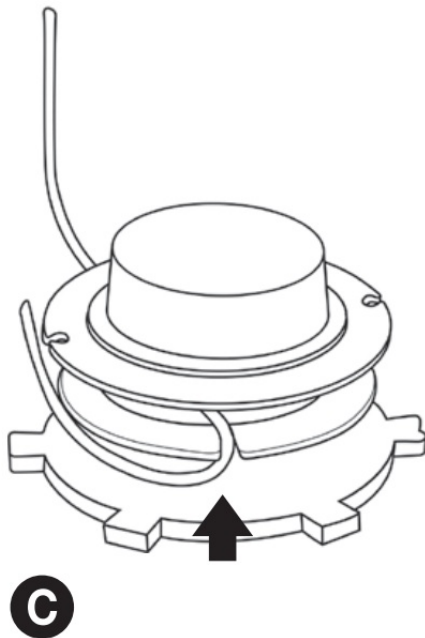
- Winding string trimmer line on to the trimmer head

1. Push in the retaining latches on the side of the head and take off the cover (see Fig. 7, points A&B)

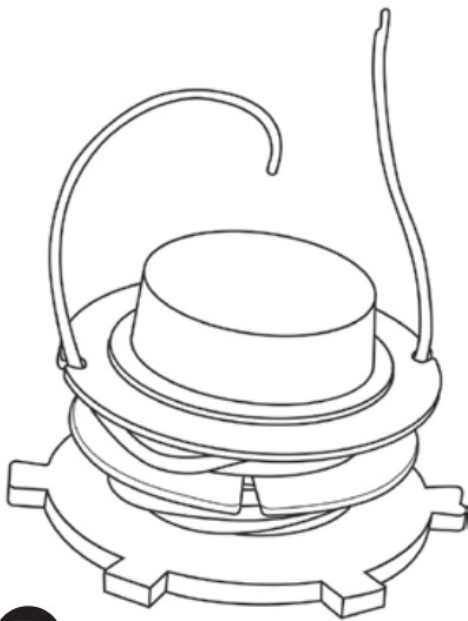
Fig. 7



2. Take the spool out of the string trimmer head. Prepare about 2 m of string trimmer line with a diameter of 1.4 mm.
3. Bend the string trimmer line in the middle and secure the bend in the groove (see Fig. 7, point C)

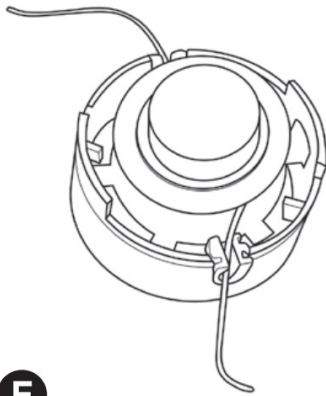


4. Wind both ends in parallel on to the spool in a clockwise direction. Secure the ends of the wound on string trimmer line into the prepared holes (see Fig. 7, point D)

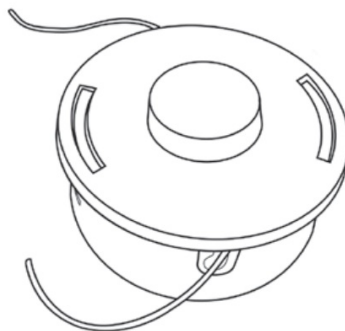


D

5. Return the spool back into the string trimmer head and secure in place with the cover (see Fig. 7, points E&F)



E



F



WARNING

Use only good quality nylon string trimmer line with a diameter of 1.4 mm. Never use wire or wire reinforced string trimmer line instead of the nylon string trimmer line. Only use the original string trimmer head.

STARTING THE TRIMMER

• POINTS TO CHECK BEFORE STARTING WORK

1. Check whether any screws, nuts and installation elements are loose. Tighten any loose screws.
2. Make sure that the plastic head guard is securely fastened in place.
3. Check the string trimmer head for damage.



WARNING

- Before starting the trimmer, make sure the string trimmer head can move freely and is not touching any foreign objects.
- Hold the string trimmer firmly with both hands. Always stand so that your body is on the left of the shaft tube. Never hold the handle with crossed arms. These instructions also apply to left-handers.

ATTENTION: Exposure to vibrations may damage the health of persons that suffer from circulatory or nerve system problems. If any physical problems become evident, such as desensitisation, loss of sensitivity, loss of usual strength or changes in skin colour, please contact a doctor. These systems usually manifest themselves on fingers, hands or wrists.

STARTING THE TRIMMER

Press the trigger safety lock (Fig 1, point 3, and then press the main start/stop switch, Fig 2, point 2

TURN OFF THE MOTOR

Release the start/stop trigger (fig. 1, point 2).

CUTTING



WARNING!

When working with any string trimmer or brush cutter model, there is a danger of deflecting stones, metal or small objects and the cut material. Carefully read all the safety directives.

Follow all the instructions provided in this user's manual.



WARNING!

Use head, eye, face and hearing protection. Use appropriate footwear that will protect your feet and which will ensure a firm stance on slippery surfaces. Do not wear ties, jewellery or loose clothing that could become caught in the moving parts of the tool. Do not wear footwear with an open tip. Do not work barefoot or with bare legs. In certain situations you must use full face and head protection.

Take care to avoid recoil and jamming of the blade.



DANGER ZONE

NOBODY APART FROM THE OPERATOR MAY ENTER THE DANGER ZONE OF A 15 METRE RADIUS. THE OPERATOR MUST USE APPROPRIATE EYE, HEARING, FACE, FOOT, LEG AND BODY PROTECTION. PERSONS LOCATED IN THE DANGER ZONE OR IN THE RISK ZONE AFTER THE DANGER ZONE MUST USE EYE PROTECTION AGAINST DEFLECTED OBJECTS. THE RISK IS REDUCED WITH INCREASING DISTANCE FROM THE DANGER ZONE.

CUTTING WITH THE NYLON STRING TRIMMER HEAD

- The string trimmer head rotates CLOCKWISE.
- The trimmer line is extended out semi-automatically. While trimming, simply gently tap the head on the ground, which will push down the button on the underside of the head and the string trimmer line will slide out. The string trimmer line is then shortened to the maximum permitted length on the blade integrated in the plastic guard.

TRIMMING GRASS

- During this activity, carefully move the trimmer into the material that you wish to trim. Slowly tilt the head so that the trimmed material is ejected away from you. If you are trimming all the way up to obstacles such as fences, walls and trees, then approach at such an angle that all material is ejected away from you. Slowly move the head with the nylon string trimmer line from right to left until the grass is trimmed all the way to the obstacle but avoid the string trimmer line coming into contact with the obstacle.
- When trimming in the vicinity of a wire fence or enclosure, proceed carefully so as not to come into contact with the wires. If you exceed the minimum distance from the fence, the string trimmer line will be shortened after impact.
- When cutting weeds, it is possible to cut one stem at a time. Place the trimmer head with string trimmer line at the bottom part of the weed – never the top because the stem may start quivering and the string trimmer line may become caught in it. Rather than attempting to cut the weed directly, it is better to use only the end of the string trimmer line and to cut the stem slowly.

CLEARING AND TRIMMING EDGES

- Both these tasks are performed using the head with the nylon line tilted at large angle. Clearing means removing the top vegetation after which only soil remains.
- Trimming edges means trimming the grass at the edge of lawns that extends on to footpaths and roads.
- While clearing and trimming edges, hold the tool at a steep angle and in a position where dirt, cut material and stones will not be ejected backwards towards you in the event that they ricochet from a hard surface. Despite the pictures showing how to perform clearing and trimming of edges, every user must find their own position that will suit their body dimensions and working conditions.



WARNING

If a head with a nylon line is used, the correct protective guard must be fitted. If the nylon line extends out too far, it may start fluttering. If you use a head with a nylon line, always use the protective plastic guard with the cutter blade.



WARNING

Be very careful when working above soil or gravel because the nylon line may deflect small stones at a very high speed.

The protective guard on this tool cannot stop objects that ricochet off hard surfaces.



WARNING

Do not trim in places where there are wires and wire mesh. Use protective aids. Do not trim in locations where you cannot see what the trimmer is trimming.

MAINTENANCE

- The string trimmer line may dry out over time. To maintain it in excellent condition, store spare pre-wound spools or loose trimmer line in a plastic bag with a spoon of water.
- For cleaning the power tool, use only gentle soap and a damp cloth. Do not submerge the power tool in water or spray it with a hose. Do not allow any liquid to enter inside. Do not clean with pressurised water.
- The trimmer line cutter on the edge of the protective guard may become blunt over time. We recommend that it is regularly rehappened with a file.

DISPOSAL

INSTRUCTIONS AND INFORMATION REGARDING THE DISPOSAL OF USED PACKAGING MATERIALS

Dispose of used packaging material at a site designated for waste in your municipality.



■ The machine and its accessories are manufactured from various materials, e.g. metal and plastic.

Take damaged parts to a recycling centre. Inquire at the relevant government department.

Changes in the text, design and technical specifications may be made without prior notice and we reserve the right to make these changes

DECLARATION OF CONFORMITY

EU DECLARATION OF CONFORMITY

Product / brand: Electric Lawn Trimmer / FIELDMANN

Type / model: FZS 2505-E as factory model DT2140
AC 230-240V; 50 Hz; 550W; Class II; IPX0
LPA = 78 dB(A), LWA = 96 dB(A)

Manufacturer: FAST ČR, a.s.
U Sanitasu 1621, 251 01 Říčany, Czech Republic
VAT no: CZ24777749

This declaration of conformity is issued under the sole responsibility of the manufacturer.

Person in charge of completing the technical documentation: FAST CR, a.s.

The object of the declaration described above is in conformity with the relevant Union harmonization legislation:

- Directive MD 2006/42/EC
- Directive EMC 2014/30/EU
- Directive NEOE 2000/14/EC
- Directive RoHS 2011/65/EU

The relevant harmonized standards and the other technical specifications:

- EN 60335-1:2012+AC+A11+A13+A1+A14+A2
- EN 50636-2-91:2014
- EN 62233:2008
- EN IEC 55014-1:2021
- EN IEC 55014-2:2021
- EN IEC 61000-3-2:2019+A1
- EN 61000-3-3:2013+A1



Place of issuance: Prague

Date of issuance: 31. 08. 2022

Name: Petr Uher – Responsible Person

Signature


FAST FAST CR, a.s.
U Sanitáru 1621, 251 01 Říčany
tel.: +420 323 204 111
IČO: 247 77 249, DIČ: CZ 247 77 249

TECHNICAL SPECIFICATIONS

Model: FZS 2505 E

Voltage/Frequency: 230-240V~/50Hz

Electric motor power input: 550 W

Cutting coverage: 30 cm

Type of string trimmer head: Semi-automatic

Idling speed: 10,000 rpm

Trimmer line diameter: 1.4 mm


Weight without fuel and cutting tools: 2.3 kg

Sound pressure level: LpA: 84.4dB(A), K=3dB(A)

Guaranteed sound power emission level: LwA: 96dB(A)

Vibrations: 4.56m/s² K=1.5m/s²

Documents / Resources

	<p>FIELDMANN 2505 E Electric String Trimmer [pdf] User Manual 2505 E Electric String Trimmer, 2505 E, Electric String Trimmer, String Trimmer, Trimmer</p>
---	---

References

- [User Manual](#)