



# FFF 25-USB3-C-SATA-P7 Portable External Hard Disk User Manual

[Home](#) » [FFF](#) » FFF 25-USB3-C-SATA-P7 Portable External Hard Disk User Manual 



**User Manual**

## Contents

- [1 25-USB3-C-SATA-P7 Portable External Hard Disk](#)
- [2 Checking the package contents](#)
- [3 Names and Functions of the body of each part](#)
- [4 Connect this product to the PC](#)
- [5 Regarding data back up](#)
- [6 Operations on the personal Computer](#)
- [7 How to format](#)
- [8 Frequently Asked Questions](#)
- [9 Contact to support](#)
- [10 Specifications of this product](#)
- [11 Product warranty](#)
- [12 Documents / Resources](#)
  - [12.1 References](#)
- [13 Related Posts](#)

Please read before using.

Portable External hard disk

[Please obey the safety precautions] Prevent the damage of the customers and other people in advance, including the contents of this product safely, Use safely on your understanding.



- Regarding use this product, If there is warning that your PC manufacturers has indicated, Please strictly observe the note at display.
- Please do not disassemble or improvement of the equipment. Cause of fire or electric shock.
- If there is smoke, after strange smell or sound please disconnect the USB plug immediately from your PC. In addition, If other abnormality found once your product, please contact to our support center.
- Donot get wet this product, please do not use near water. Will be the cause of an electric shock or fire.
- Please do not such fold or pressing or scratch objects on the connection cord. It will be cause of fire or electric shock.
- Please note that during disassemble / assemble, touch unfortunately inside, there is a risk of injury or electric shock..



- This product, such as heating equipment, please do not keep around the instrument which could be heated. It can cause a fire or electric shock due to overheating.
- There are some small part could be enter the mouth of the infants. Please keep out reach of children.
- This product is a precision electronic equipment, please remove static electricity from the body.  
Cause of the wrong effector failure for static electricity.
- While the access lamp is flashing, or turn OFF the power, please do not reset the computer.  
It will be cause of the failure, and has possibility of erased data.
- Please do not disconnect the cable during operation. It will be cause of the failure, and has possibility of erased data.
- Please pay attention to connect, such as a connector.

#### **[Caution]**

- Please note that the contents of this package, might be changed without notice due to improvements or other.
- This product does not guarantee the operation of all connected devices.
- This product is only be used in Japan.
- Company and product name trademarks or registered trademarks are owned of respective companies.
- Regarding saving data in this product, hard disk failure, malfunction, even if the product are destroyed by any other reason, we do not provide any guarantee from our company.
- For support, Please inquiry form below website.
- sales / support of acceptance will be only on weekdays.

## **Checking the package contents**

Before using this product, please confirm that the following items has been included.

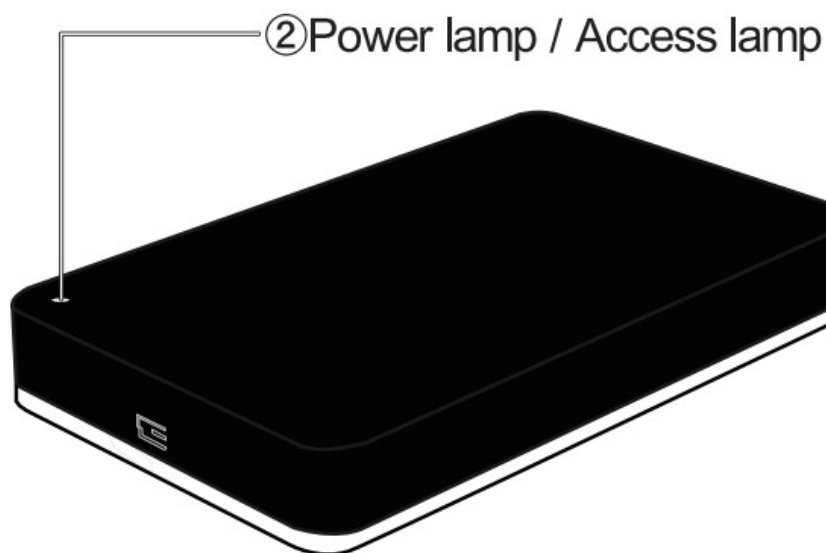
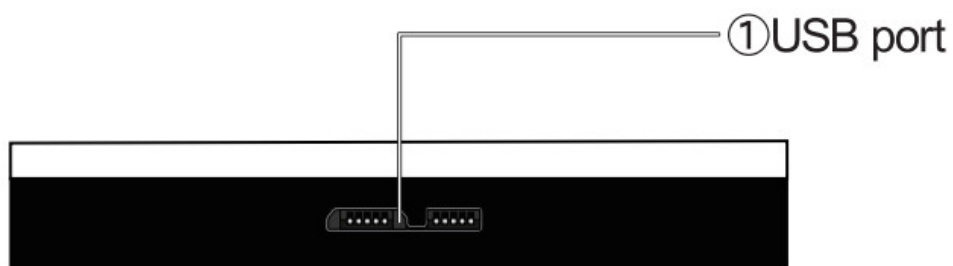
By any chance, If you have any lack of defective goods, please contact the retailer from which you purchased the product.

- Mini SHELTER

- ☐ body
- ☐ USB cable
- ☐ USB Type-A to Type-C Adapters
- ☐ manual and product warranty (this document)

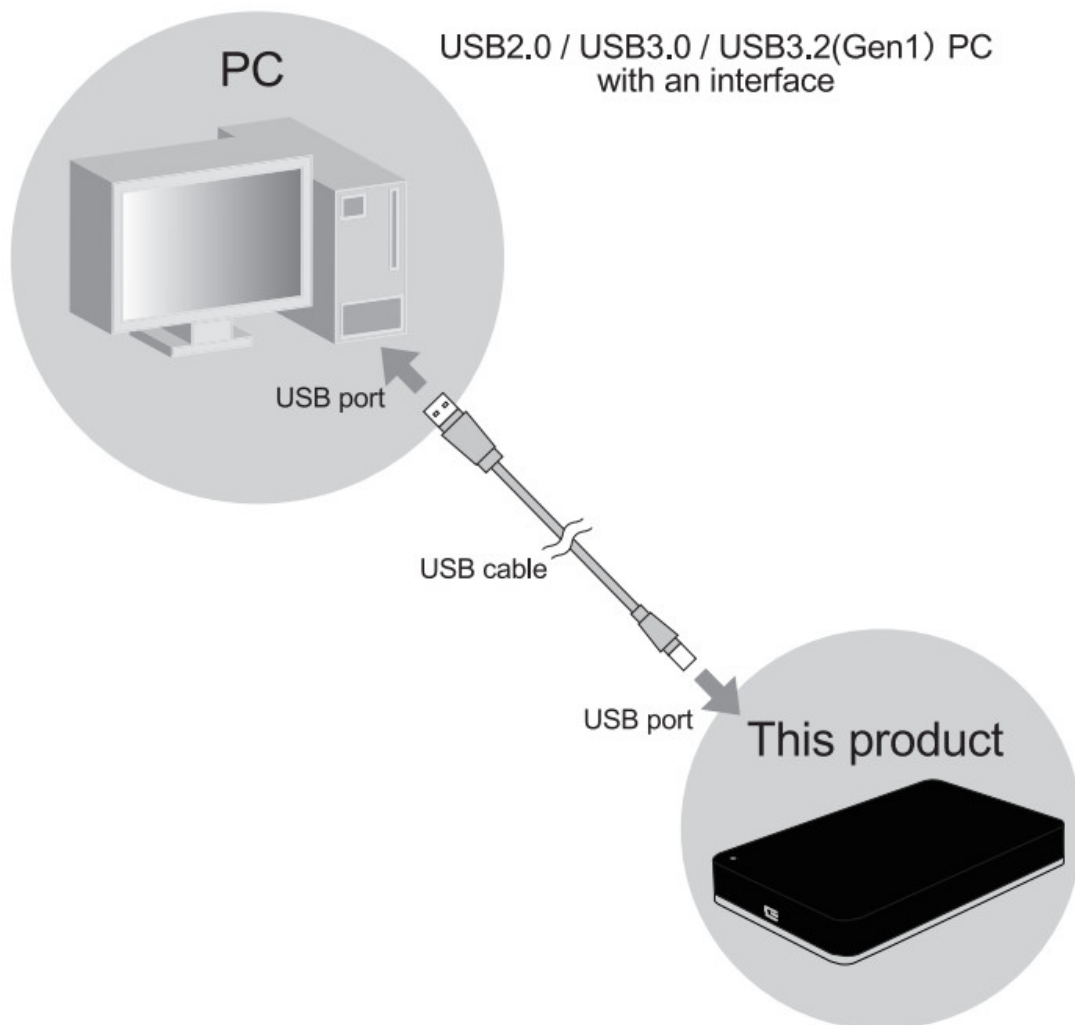
## Names and Functions of the body of each part

1. USB port: Use the including USB cable to connect the product to the computer.
2. Power lamp / Access lamp : power lamp will light up while connecting.  
Once access successfully , access lamp will blink.



## Connect this product to the PC

Connect this product to the PC.



Connect the connector of the supplied USB cable of USB port of this product, and connect the opposite connector to the USB port on your computer.

※ to connect to the USB hub there is a chance not to work properly.

[If there no icon of product)

- Please change the USB port when you want to connect.

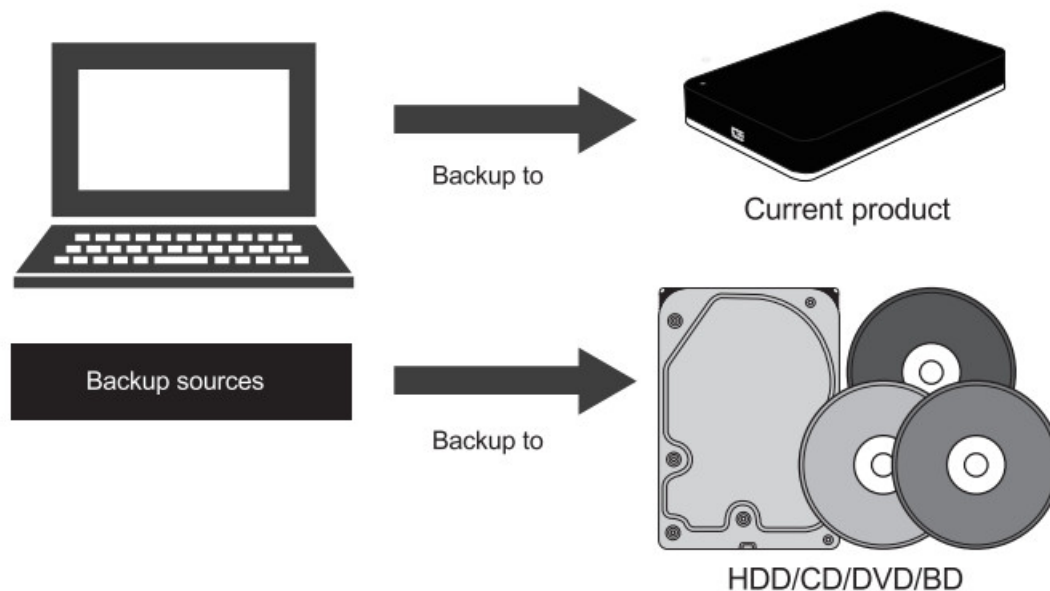
## Regarding data back up

(Recommend make copies of backup data ]

Includes our and other HDD products are precision instrument , unpredictable equipment malfunction may occur .If save all the backup data in one device , once any malfunction occur , data will be loss . We recommend to save backup data constantly on multiple devices

※ Loss data cannot be recover

※ Our company / we will not take any responsibility for the data loss



### Connection confirmation

Please check whether the drive display added at the start > My Computer.

Remove from the personal computer

If you want to remove this product from your computer, click on the task bar of the USB icon, Please remove it from by selecting the “Safely Remove Hardware”.

### Operations on the personal Computer

[Confirm to Connection] Open the “My Computer”, make sure that the drive is being displayed.

※ Please review the steps (P.2) if you cannot use it again described above.

[Partition of creating and formatting (initialization) method] This product has been shipped after format. If you want to re-format, Please try the following operations.

**Note:** Please be careful that if there is data in the hard disk, all will be erased.

1. Please open my computer of desktop press “right click” and select “Control”.

※ If my Computer Management” window will be opened.



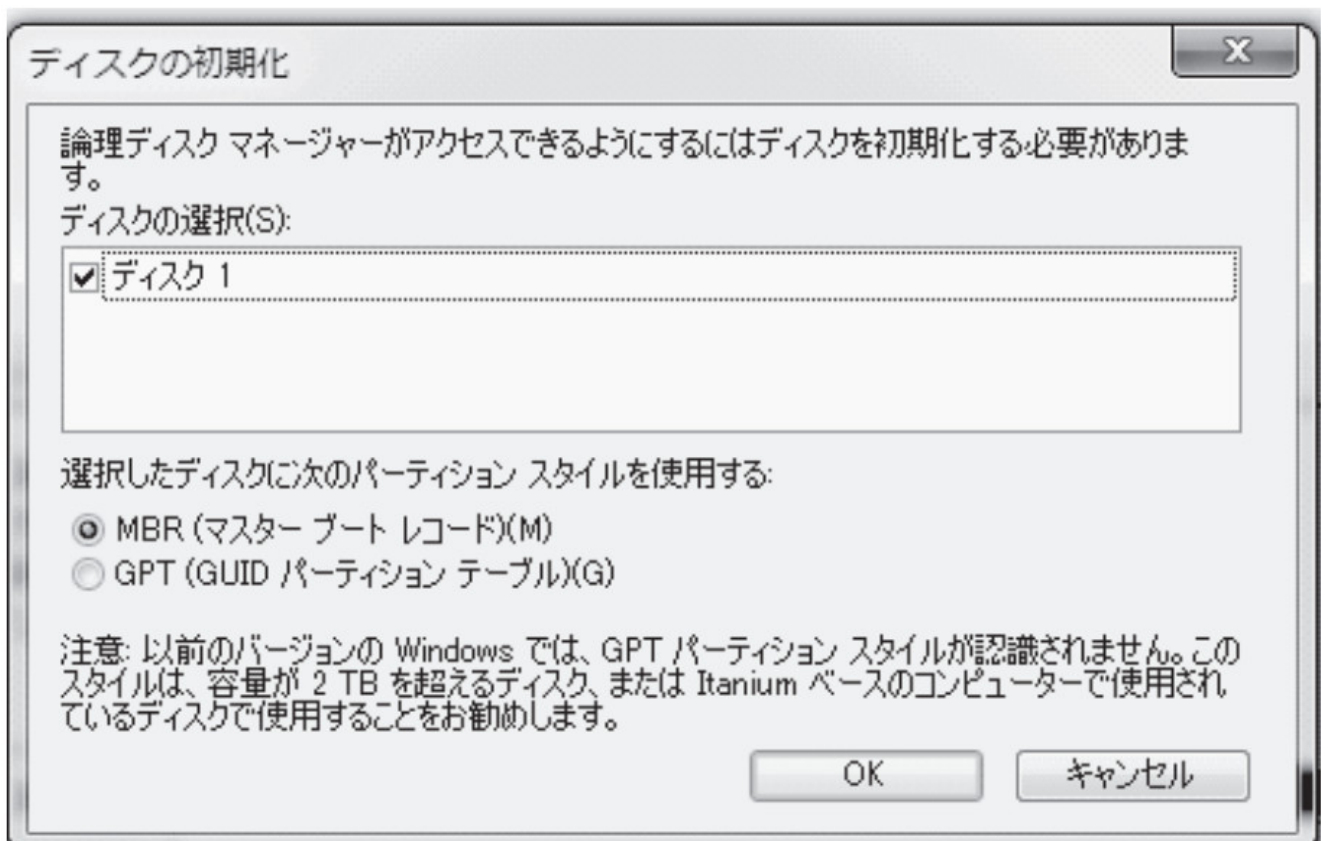
2. [tree] from the [Disk Management] of the “Computer Management” window Please choose “Disk Manager Service.” It will be displayed.



3. If the initialization of the HDD is not finished, right-click on the ★ 1 part, Select the “Initialize Disk”. If initialization has complete already move to work of 5).



4. If HDD less than 2TB, select “MBR” If HDD bigger than 2.5TB select “GPT” and press OK. HDD initialization will be completed.



5. in the ★ & second part put on the right-click select the “New Simple Volume”.



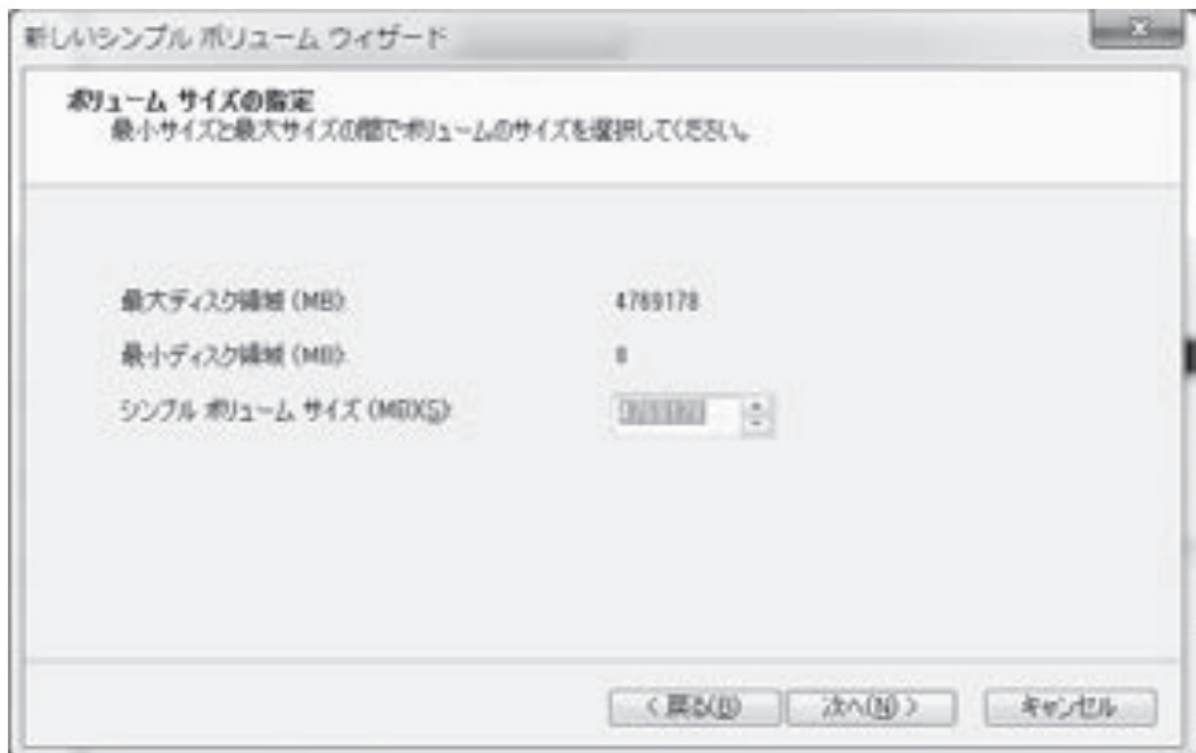
6. “New Simple Volume Wizard”, will be appear then select the “Next”.



7. Specify the format area size at “specified volume size”.

Divide the partition enter any size in the “Simple Volume size”

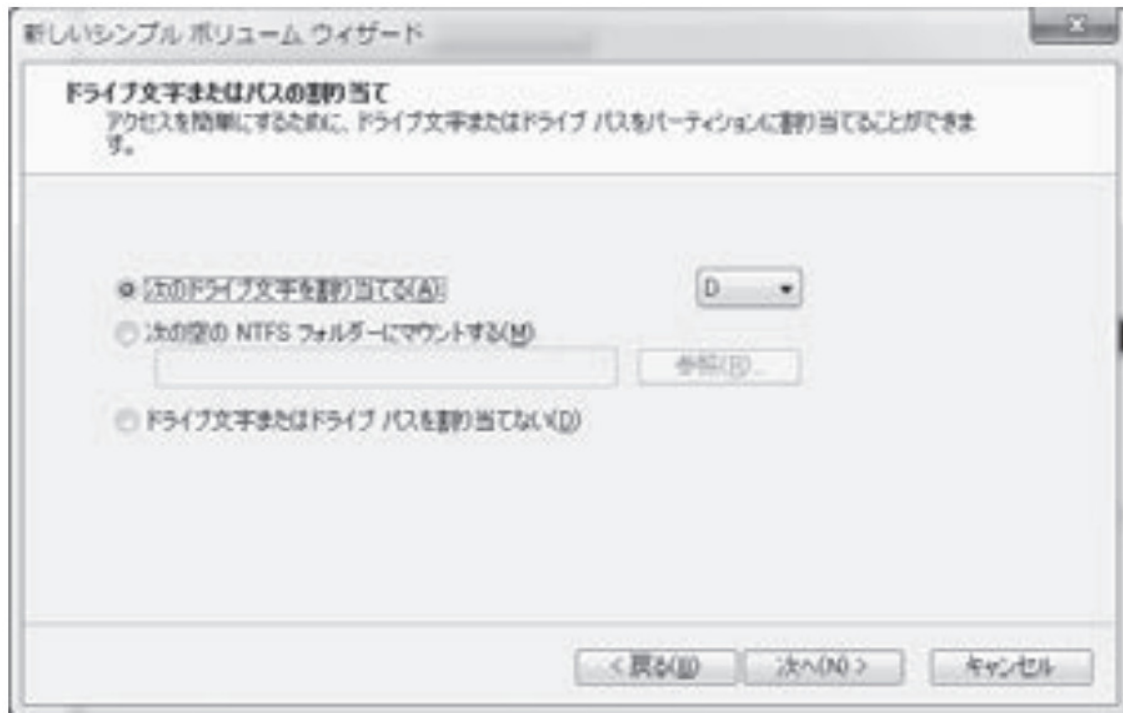
Choose the “Next”. If it does not need to divide the partition than not to do press “Next”.



8. Specify a “drive letter or path assignment of” the drive letter (letter).

If it's not need to specify and then select as it is “Next”.

※ drive letter will be change on the environment.

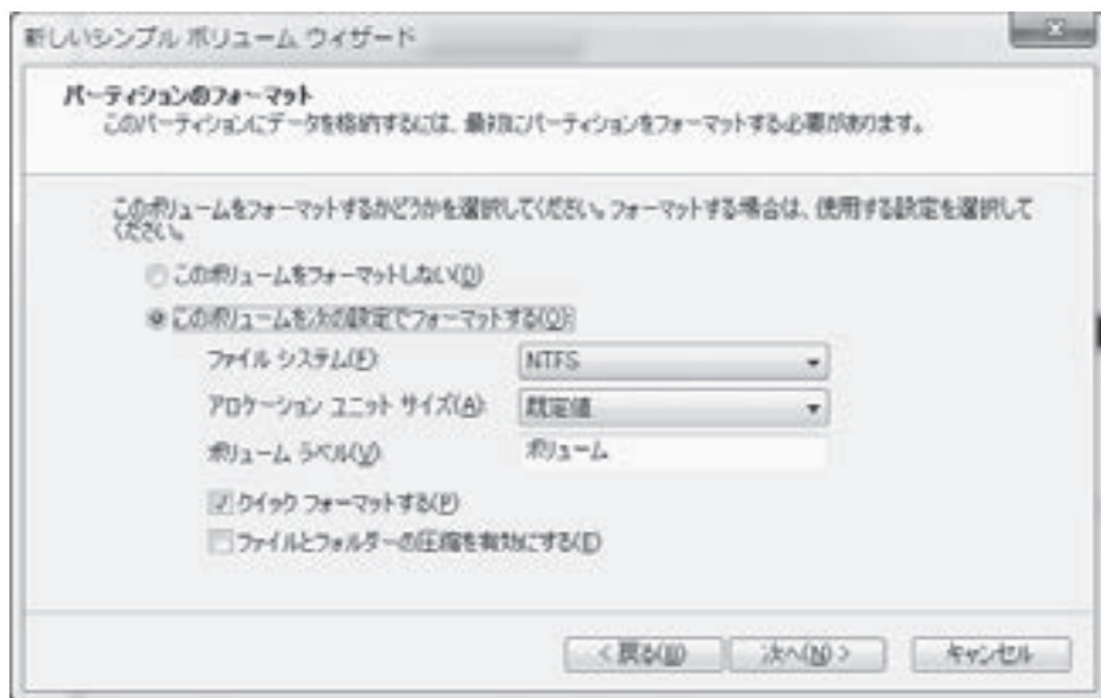


9. If it's known the "Format Partition" of the settings, select the "Next"

If it's not need to specify and then select as it is "Next".

※ If there is checked mark in the quick format than format time will be short.

※ If there is not checked mark in the quick format than format time will be long.



10. Select "Finish"



11. Wait until the formatting is complete.



12. Formatting is complete as like as image picture.



## How to format

(in the case of Windows10)

1. Open the desktop screen.
2. on the lower left corner (near the circle of the image) of the desktop screen, then press right-click tap longer.



【In the case of Windows8】



【In the case of Windows8.1】



【For Windows10】

3. Select the "Disk Management".



4. For other operation is the same way as 3 of P.4.

※ Please note that there is a different case at the actual Windows10 screen.

## Frequently Asked Questions

[http://Awww.marshall-no1.jp/support/shelter\\_minishelter\\_tv.html](http://Awww.marshall-no1.jp/support/shelter_minishelter_tv.html) If it does not recognize, Even though has listed TV compatibility list. Please check the below procedure. • Please OFF The power supply of an external HDD turned it ON again • Please re-connect the USB cable. • If there is using a USB hub, should be connected directly to the device without use USB hub If there is no improvement than there is a possibility of failure of HDD . Please contact to the Support Center. " image-1="" headline-2="p" question-2="Q. Check an external HDD that has been used on TV, can be used in the PC?" answer-2="A. If that external HDD which cannot use in TV, and also in PC. Can use performing the format initialized with the personal computer,. ※ If there is performing the initialization (format) all recorded data will be erased. ※ The external HDD which has formatted on a computer cannot be used in television. We need to do the format again on television. " image-2="" headline-3="p" question-3="Q. Is it possible to save a program at PC – DVD which was recorded by television?" answer-3="A. formatted HDD on television, it's only special formatted for TV-only, cannot use & play to other equipment. Therefore, cannot use at personal computer and cannot save to DVD too. " image-3="" headline-4="p" question-4="Q. External HDD is no longer recognized at the PC or TV ?" answer-4="A. Turn OFF the power external HDD, Turned ON the power again. If it's still does not recognize, please check the following items. • Check LED lamp of external HDD is blinking or not. If there no blinking, please connect the USB cable again. For PC If there is more USB port please connect to another USB port. • If you are using in TV, Please connect directly to the recording port directly. • If you are using USB hub, Please connect directly to the equipment not to use HUB. If there is no improvement than there is a possibility of failure of HDD. Please contact the Support Center. " image-4="" headline-5="p" question-5="Q. an external HDD has been used until now, suddenly format screen and re-registration screen become displayed." answer-5="A. Turn OFF the power external HDD, Turned ON the power again. If it's still does not recognize, please check the following items. • Please do connect USB cable again. • If you are using USB hub, Please connect directly to the equipment not to use HUB. There is some reason that the format information of the HDD does not recognized. In that time format it again. It will be able to use. If there is no improvement than there is a possibility of failure of HDD . Please contact the Support Center. ※ If it's format again, then recorded data will be lost. ※ For re-registration at the TV, please check the TV's manual. " image-5="" headline-6="p" question-6="Q. Can not play smoothly the recorded program." answer-6="A. Turn OFF the power external HDD, Turned ON the power again. If it's still does not recognize, please check the following items. • Please do connect USB cable again. • If you are using USB hub, Please connect directly to the equipment not to use HUB. Please check the radio network perfectly receiving or not. If radio networks are weak there will be appear some symptoms such as block or noisy. There is some reason that the format information of the HDD does not recognized. In that time format it again. It will be able to use. If there is no improvement than there is a possibility of failure of HDD . Please contact the Support Center. ※ If it's format again, then recorded data will be lost. ※ For re-registration at the TV, please check the TV's manual. If there is no improvement than there is a possibility of failure of HDD . Please contact the Support Center. " image-6="" headline-7="p" question-7="Q. Can I use them USB2.0?" answer-7="A. Can use. However, if it's connected with USB2.0, the maximum transfer rate, will be 480Mbps (theoretical rate)." image-7="" headline-8="p" question-8="Q. Difference of capacity which has actually on the hard disk." answer-8="A. Capacity is slightly reduced which displayed on the OS after the format cause of calculation methods are different It will appeared calculated by 1GB = 1,000MB, different from the actual recognize capacity on personal computer. " image-8="" headline-9="p" question-9="Q. There is a gap between USB cable and HDD is it OK?" answer-9="A. Its depend on USB connector specifications so can use it without any problem." image-9="" headline-10="p" question-10="Q. Is there any chance to issue not applicable certification ?" answer-10="A. Because of use in overseas are not able to provide warranty of not applicable certification." image-10="" count="11" html="true" css\_class=""]

For repair and operation method for this product,  
Please contact us through the email address below.

## Contact to support

※ Please note that support will be only E-mail.  
※ Sales and support will be available only weekday.  
Support .



[SUPPORT-US@fff-no1.co.jp](mailto:SUPPORT-US@fff-no1.co.jp)

## Specifications of this product

|            |  |
|------------|--|
| DOS        | V compatible machine with a connector of USB2.0※1/USB3.0/ USB3.2 (Genn |
| Support OS | Windowsil / Windows10 / Mac OS X 10.12                                 |
| Interface  | USB2.0※1 / USB3.0 / USB3.2 (Gent) interface                            |
| Size       | about 78mm (W) X 127mm (D) X 14nm (H)                                  |

※ Guarantee of operation in all personal computer for this product is not available.

※ 1 will be equivalent of transfer speed USB2.0

### Caution

- Please note that it might be change the contents of this package, without notice due to improvements or other.
- Does not check the compatibility with HDD recorder and Blu-ray recorder .
- In some TV models, there are not output of USB power supply.
- Guarantee of this product valued only be used in Japan.
- This product does not provide guarantee for operation of all connected devices.
- Company and product names and trademarks or registered trademarks owned respective companies.
- Regarding failure of hardware ,data stored in this product, even if they are destroyed by any other reason, Manufacturer not able to provide guarantee. For important data please backup data in advance.
- Support will be E-mail only.
- Sales / support will be will be available only weekdays.

This product which was passed to product inspection under our strict quality control.

In normal use, in case have any trouble if it is under guarantee will be repaired by following described, please provide written guarantee letter to the retailer from which you purchased the product.

<Free of charge repair provisions>

#### 1. For the warranty

For under Warranty, Required purchase of the company mark and customer information (item of written guarantee). If there is no company sign of purchase, we will check the receipt that can be seen that have purchased this product, please keep it in a safe place with the present warranty.

Please note that if there is no receipt it does not cover guarantee.

It's should be noted that the present products are not able to support outside of Japan.

#### 2. Repair method

Warranty period of failure, if it's request a free repair please bring along with a (receipt at the time of purchase if there is no description of the date of purchase) customer should bear charge for shipping.

#### 3. free of charge repair out-of-range items (pre-paid repair charge)

1. improper use, repair due to negligence of handling
2. wind and flood damage, due to an earthquake, fire, other natural disasters, pollution and abnormal voltage (abnormality of the commercial power supply 100V)
3. failure due to repair and remodeling by anyone other than our service department,
4. due to the other devices that are connected, if a fault occurs in the legal goods
5. If there is not provide of this warranty card

6. If you are rewriting or the blank items to this warranty
  7. Falling at the time of movement, failure and damage transportation after the purchase, caused due of handling not appropriate
  8. In the case of failure caused by handling against the methods and to the attention  
Use according to manual
  9. replacement of consumables
  10. Occurs between the specific parts kind or devices connected to it  
(what is referred to as a compatibility problem)
4. For customers data such as involved in this product, it also becomes over compensation.

## Product warranty

Thank you very much for purchase our product.

Pack back and carefully read free repair regulation that are described in this document, Please keep this guarantee letter properly.

Warranty expiration date(from date of purchase)6months

Purchase Date

Type name

Serial number (listed in the products body)

Street address

Company NAME (corporate only)

Assigned (corporate only)

Department (corporate oniy)

Customer name

Dealer name

Store name, address, phone number, and name of the person in charge

(Store seal or proof of purchase attached)

※ If there are omissions, please note that it is not possible to receive free of charge even within the warranty period.

Inquiries

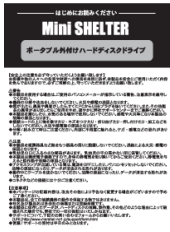
[support-us@fff-no1.co.jp](mailto:support-us@fff-no1.co.jp)

SHELTER25-USB3-C-SATA-P7

2022.12 Ver.1.0

---

## Documents / Resources



[FFF 25-USB3-C-SATA-P7 Portable External Hard Disk](#) [pdf] User Manual

25-USB3-C-SATA-P7 Portable External Hard Disk, 25-USB3-C-SATA-P7, Portable External Hard Disk, External Hard Disk, Hard Disk, Disk

## References

- [User Manual](#)