

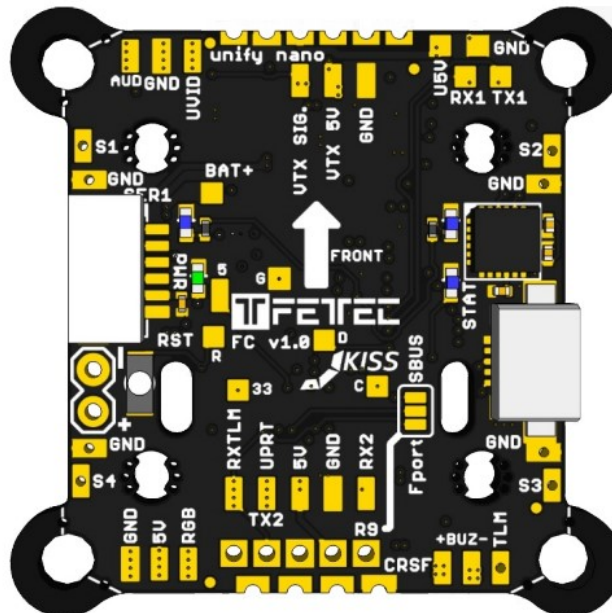
FETTEC SW26 KISS FC Flight Controller Instruction Manual

[Home](#) » [FETTEC](#) » FETTEC SW26 KISS FC Flight Controller Instruction Manual 

Contents

- [1 FETTEC SW26 KISS FC Flight Controller Instruction Manual](#)
- [2 Introduction](#)
- [3 Features](#)
- [4 Safety warning](#)
- [5 Connection Diagram](#)
 - [5.1 Top/Bottom Layout](#)
- [6 Dimension \(in mm\)](#)
- [7 Dimensions 35x30mm without 30x30mm corners](#)
- [8 FC Version 1.2](#)
- [9 Basic Setup](#)
 - [9.1 8 pin connection](#)
- [10 Introduction](#)
- [11 FrSky R-XSR](#)
- [12 Crossfire nano connection](#)
- [13 VTX connection \(Unify nano\)](#)
- [14 Camera connection](#)
 - [14.1 Notes:](#)
- [15 Resetbutton](#)
- [16 KISS Firmware](#)
- [17 Technical details](#)
- [18 Read More About This Manual & Download PDF:](#)
- [19 Documents / Resources](#)
 - [19.1 References](#)
- [20 Related Posts](#)

FETTEC SW26 KISS FC Flight Controller Instruction Manual



Introduction

Thank you for purchasing the FETtec FC. This is a KISS licensed F7 Flight-controller

Features

- KISS FC firmware
- 2S-6S Lipo voltage
- Dimensions 35x30mm without 30x30 corners
- 20x20mm (with breakable holes M2 to M3)
- 30x30mm hole distance useable (breakable 30x30mm corners)
- F7 Processor [DSHOT 2400, Oneshot, Onewire]
- Direct places for RX and VTX (unify nano, CRSF nano, FrSky R9)
- Build-in real Pit-Mode for unify nano (via VTX Pin and 5V on SER1)
- Dedicated onboard 5V BEC for VTX (max 600mA)
- Motor Signal and GND pads in each corner
- 8 pin connector for solder free FETtec ESC connection

Safety warning

- Remove propeller before flashing and configuration

Connection Diagram

Top/Bottom Layout



Technical drawing of a mechanical part, likely a bracket or support, showing dimensions in millimeters. The drawing includes a top view and a side view.

Top View Dimensions:

- Overall width: 30.25
- Overall height: 30.25
- Distance from left edge to center of top-left hole: 20
- Distance from left edge to center of bottom-left hole: 34
- Distance from left edge to center of top-right hole: 30
- Distance from left edge to center of bottom-right hole: 30.25
- Distance from center of top-left hole to center of top-right hole: 20
- Distance from center of bottom-left hole to center of bottom-right hole: 20
- Distance from center of top-left hole to center of bottom-left hole: 34
- Distance from center of top-right hole to center of bottom-right hole: 30.25

Side View Dimensions:

- Overall height: 30.25
- Distance from top edge to center of top-right hole: 2.25
- Distance from center of top-right hole to center of bottom-right hole: 3.25
- Distance from center of bottom-right hole to bottom edge: 2.25

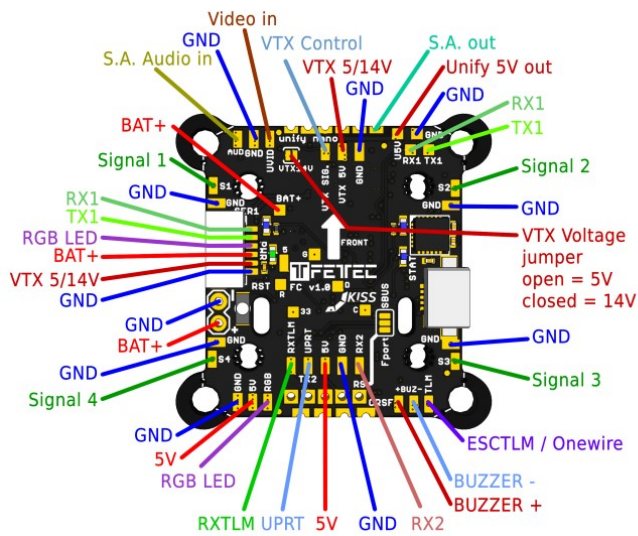
Other Features:

- Four circular holes, each with a diameter of 2.5.
- Two rectangular slots, each with a width of 2.5.
- Two diagonal slots, each with a width of 2.5.
- Two small circular features, each with a diameter of 2.5.

Dimensions 35x30mm without 30x30mm corners

- 20x20mm (with breakable holes M2 to M3)
- 30x30mm hole distance useable (breakable 30x30mm corners)

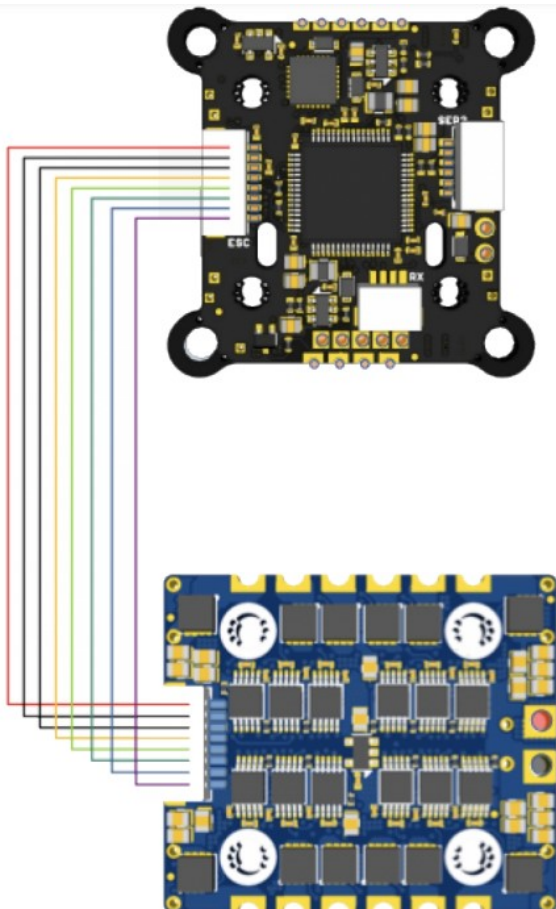
FC Version 1.2



Basic Setup

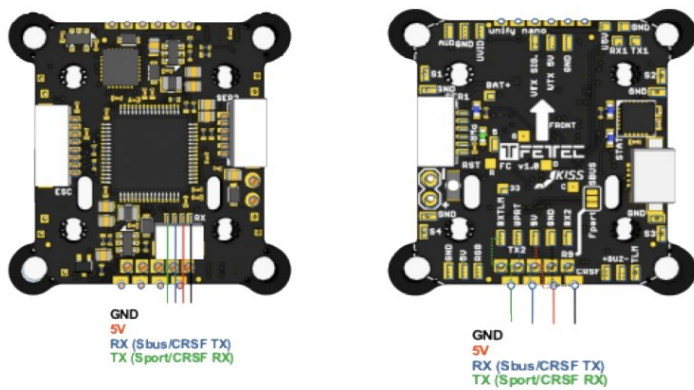
8 pin connection

(JST-SH-1mm 8-pin) FETtec KISS FC to FETtec ESC (cable included by FETtec ESC)

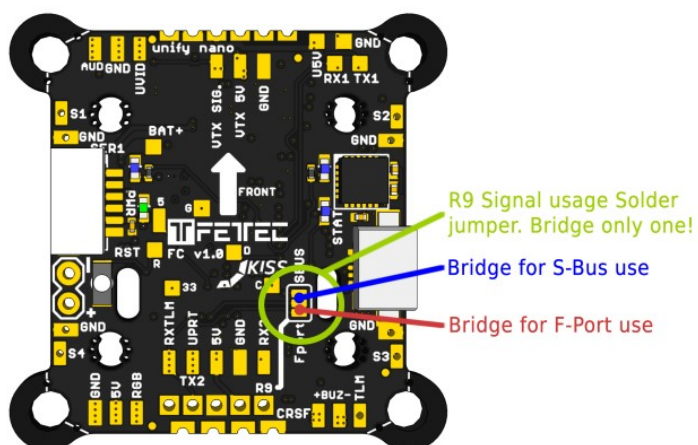
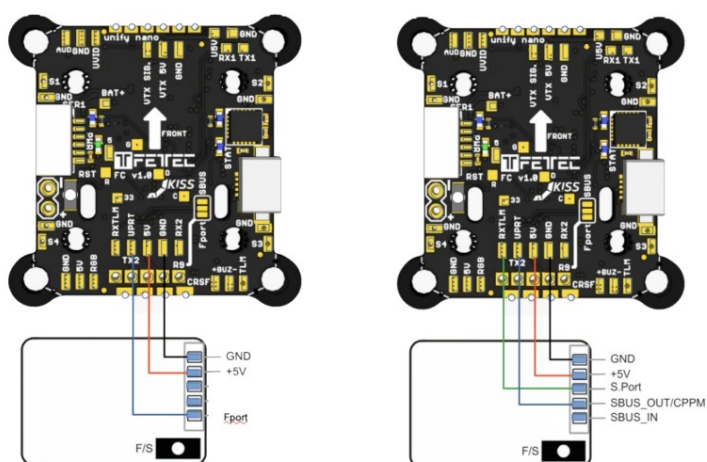


Introduction

Thank you for purchasing the FETtec FC. This is a KISS licensed F7 Flight-controller



FrSky R-XSR



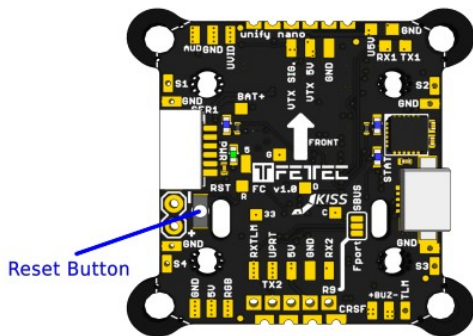
Crossfire nano connection

cable connection

2,54mm pinheader connection

Resetbutton

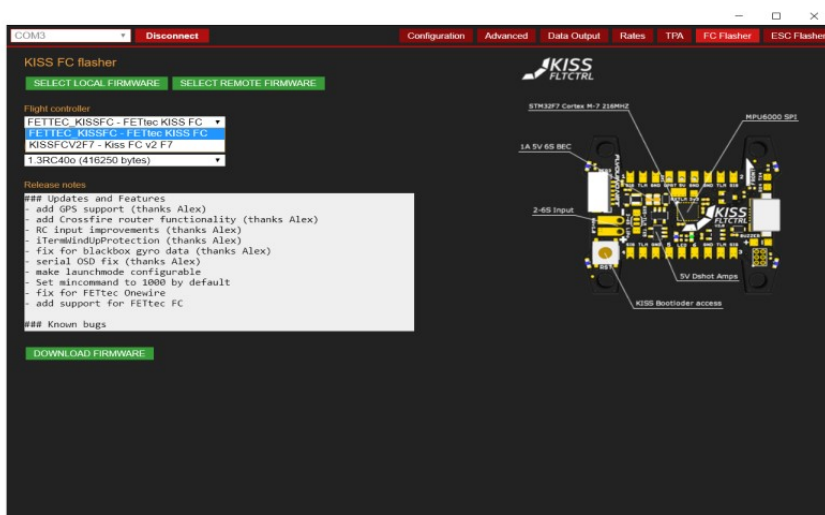
Resets the FC to the preflashed bootloader



KISS Firmware

For the latest KISS FC firmware and GUI please visit <https://github.com/flyduino>

To update the FETtec FC firmware please use the KISS GUI and choose FETTEC KISS FC




Technical details

- STM32F7RET6 @ 216MHz
- MPU6000
- Supply voltage 6-27V (2-6S LiPo)
- 2x 5V BEC's (1x VTX with realpit, 1x all others)
- both max 600mA

Read More About This Manual & Download PDF:

Documents / Resources

 <p>FETEC KISS FC Manual</p>	<p>FETEC SW26 KISS FC Flight Controller [pdf] Instruction Manual SW26, KISS FC Flight Controller, SW26 KISS FC Flight Controller, FC Flight Controller, Flight Controller, Controller</p>
---	---

References

-  [flyduino · GitHub](#)

Manuals+.