




# FESTOOL OSC 18 Cordless Oscillator Instructions

[Home](#) » [FESTOOL](#) » FESTOOL OSC 18 Cordless Oscillator Instructions 

*FESTOOL OSC 18 Cordless Oscillator Instructions*

# FESTOOL



Read all instructions before using  
Lire toutes les instructions avant de démarrer les travaux.  
Lea y comprende todas las instrucciones antes de usar.



**OSC 18**



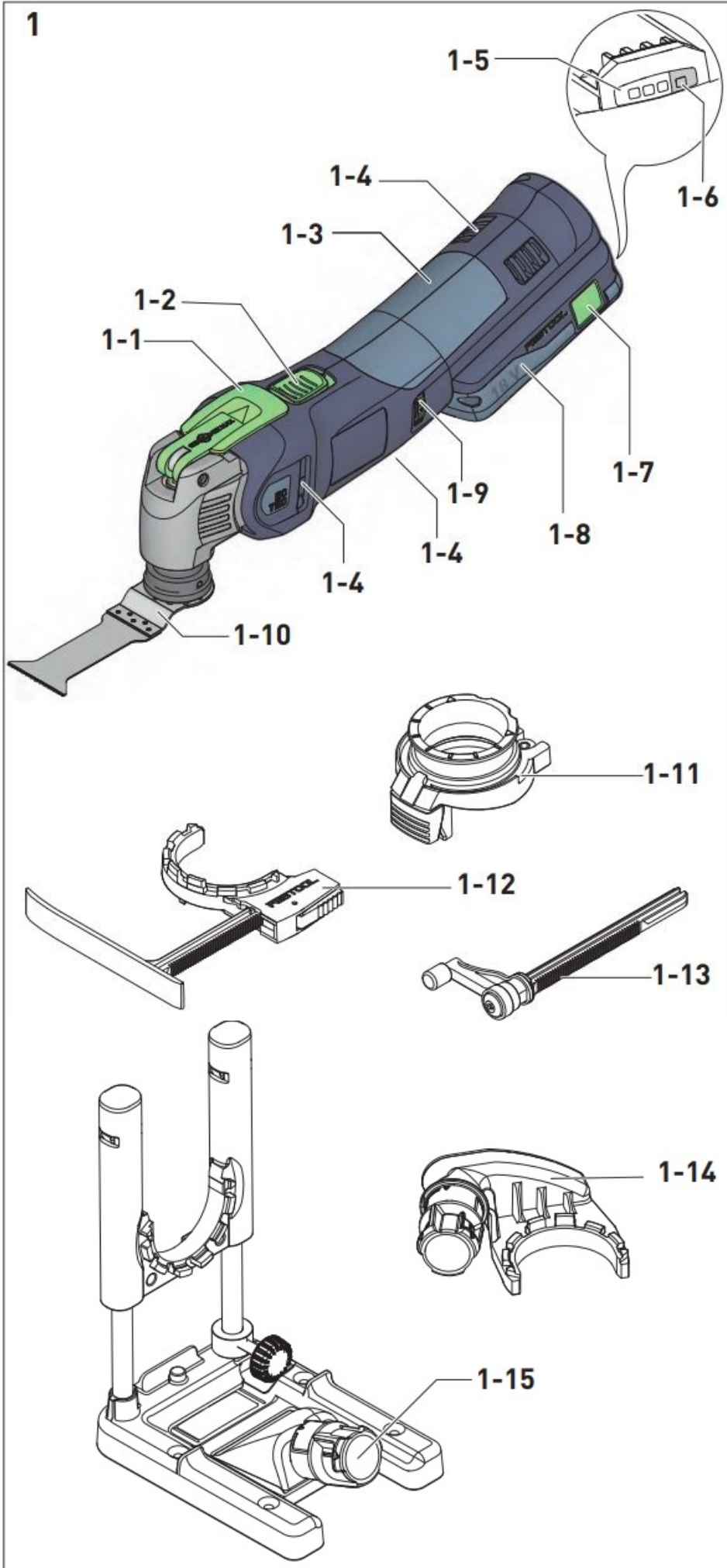
Festool GmbH  
Wertstraße 20  
73240 Wendlingen  
Germany  
[www.festoolusa.com](http://www.festoolusa.com)



718544\_H / 2020-11-10

[www.festoolusa.com](http://www.festoolusa.com)

1



## Contents

1	1 Symbols
2	2 About this manual
3	3 Safety warnings
3.1	3.1 General power tool safety warnings
3.2	3.2 Machine-specific safety notices
3.3	3.3 Metal processing
3.4	3.4 Health hazard by dust
4	4 Intended use
5	5 Technical Data
6	6 Functional description
7	7 Commissioning
7.1	7.1 Switch on/off
8	8 Battery pack
8.1	8.1 Capacity display
9	9 Settings
9.1	9.1 Speed control
9.2	9.2 Changing tools
10	10 Working with the machine
11	11 Acoustic warning signals
12	12 Accessories
12.1	12.1 Mounting the adapter [5]
12.2	12.2 Dust extraction
12.3	12.3 Depth stop [7+8]
12.4	12.4 Positioning aid [9+10+11+12]
12.5	12.5 SYSTAINER
13	13 Service and maintenance
13.1	13.1 Information on the positioning aid
14	14 Environment
15	15 Documents / Resources
15.1	15.1 References
16	16 Related Posts

## 1 Symbols



Warning of general danger



Warning of electric shock



Read the operating instructions and safety instructions.



Wear protective goggles.



Wear ear protection.



Wear a dust mask.



Wear protective gloves.



Risk of pinching fingers and hands!



Danger area! Keep hands away!



Inserting the battery pack



Removing the battery pack



Do not dispose of it with domestic waste.



Tip or advice



Handling instruction

V

volt

rpm revolutions per minute  
min-1 revolutions per minute  
kg kilogram  
lb. pound  
° angular degree

CAUTION For use only with FESTOOL batteries BP 18

**CAUTION** For use only with FESTOOL batteries BP 18

## 2 About this manual

### Save these instructions

It is important for you to read and understand this manual. The information it contains relates to protecting your safety and preventing problems. The symbols below are used to help you recognize this information.



**DANGER** Description of imminent hazard and failure to avoid hazard will result in death.



**WARNING** Description of hazard and possible resulting injuries or death.



**CAUTION** Description of hazard and possible resulting injuries.



**NOTICE** Description of possible damage of the device or its surroundings.

## 3 Safety warnings

### 3.1 General power tool safety warnings



**WARNING! Read all safety warnings, instructions, illustrations and specifications provided with this power tool.** Failure to follow all instructions listed below may result in electric shock, fire and/or serious injury. Save all warnings and instructions for future reference. The term “power tool” in the warnings refers to your mains-operated (corded) power tool or battery-operated (cordless) power tool.

### 1 WORK AREA SAFETY

- a. Keep work area clean and well lit. Cluttered or dark areas invite accidents.
- b. Do not operate power tools in explosive atmospheres, such as in the presence of flammable liquids, gases or dust. Power tools create sparks which may ignite the dust or fumes.
- c. Keep children and bystanders away while operating a power tool. Distractions can cause you to lose control.

### 2 ELECTRICAL SAFETY

- a. Power tool plugs must match the outlet. Never modify the plug in any way. Do not use any adapter plugs with earthed (grounded) power tools. Unmodified plugs and matching outlets will reduce risk of electric shock.
- b. Avoid body contact with earthed or grounded surfaces, such as pipes, radiators, ranges and refrigerators. There is an increased risk of electric shock if your body is earthed or grounded.
- c. Do not expose power tools to rain or wet conditions. Water entering a power tool will increase the risk of electric shock.
- d. Do not abuse the cord. Never use the cord for carrying, pulling or unplugging the power tool. Keep cord away from heat, oil, sharp edges or moving parts. Damaged or entangled cords increase the risk of electric shock.
- e. When operating a power tool outdoors, use an extension cord suitable for outdoor use. Use of a cord suitable for outdoor use reduces the risk of electric shock.
- f. If operating a power tool in a damp location is unavoidable, use a residual current device (RCD) protected supply. Use of an RCD reduces the risk of electric shock.

### 3 PERSONAL SAFETY

- a. Stay alert, watch what you are doing and use common sense when operating a power tool. Do not use a power tool while you are tired or under the influence of drugs, alcohol or medication. A moment of inattention

while operating power tools may result in serious personal injury.

- b. Use personal protective equipment. Always wear eye protection. Protective equipment such as a dust mask, non-skid safety shoes, hard hat or hearing protection used for appropriate conditions will reduce personal injuries.
- c. Prevent unintentional starting. Ensure the switch is in the off-position before connecting to power source and/or battery pack, picking up or carrying the tool. Carrying power tools with your finger on the switch or energising power tools that have the switch on invites accidents.
- d. Remove any adjusting key or wrench before turning the power tool on. A wrench or a key left attached to a rotating part of the power tool may result in personal injury.
- e. Do not overreach. Keep proper footing and balance at all times. This enables better control of the power tool in unexpected situations.
- f. Dress properly. Do not wear loose clothing or jewellery. Keep your hair and clothing away from moving parts. Loose clothes, jewellery or long hair can be caught in moving parts.
- g. If devices are provided for the connection of dust extraction and collection facilities, ensure these are connected and properly used. Use of dust collection can reduce dust-related hazards.
- h. Do not let familiarity gained from frequent use of tools allow you to become complacent and ignore tool safety principles. A careless action can cause severe injury within a fraction of a second.

#### **4 POWER TOOL USE AND CARE**

- a. Do not force the power tool. Use the correct power tool for your application. The correct power tool will do the job better and safer at the rate for which it was designed.
- b. Do not use the power tool if the switch does not turn it on and off. Any power tool that cannot be controlled with the switch is dangerous and must be repaired.
- c. Disconnect the plug from the power source and/or remove the battery pack, if detachable, from the power tool before making any adjustments, changing accessories, or storing power tools. Such preventive safety measures reduce the risk of starting the power tool accidentally.
- d. Store idle power tools out of the reach of children and do not allow persons unfamiliar with the power tool or these instructions to operate the power tool. Power tools are dangerous in the hands of untrained users.
- e. Maintain power tools and accessories. Check for misalignment or binding of moving parts, breakage of parts and any other condition that may affect the power tool's operation. If damaged, have the power tool repaired before use. Many accidents are caused by poorly maintained power tools.
- f. Keep cutting tools sharp and clean. Properly maintained cutting tools with sharp cutting edges are less likely to bind and are easier to control.
- g. Use the power tool, accessories and tool bits etc. in accordance with these instructions, taking into account the working conditions and the work to be performed. Use of the power tool for operations different from those intended could result in a hazardous situation.
- h. Keep handles and grasping surfaces dry, clean and free from oil and grease. Slippery handles and grasping surfaces do not allow for safe handling and control of the tool in unexpected situations.

#### **5 BATTERY TOOL USE AND CARE**

- a. Recharge only with the charger specified by the manufacturer. A charger that is suitable for one type of

battery pack may create a risk of fire when used with another battery pack.

- b. Use power tools only with specifically designated battery packs. Use of any other battery packs may create a risk of injury and fire.
- c. When battery pack is not in use, keep it away from other metal objects, like paper clips, coins, keys, nails, screws or other small metal objects, that can make a connection from one terminal to another. Shorting the battery terminals together may cause burns or a fire.
- d. Under abusive conditions, liquid may be ejected from the battery; avoid contact. If contact accidentally occurs, flush with water. If liquid contacts eyes, additionally seek medical help. Liquid ejected from the battery may cause irritation or burns.
- e. Do not use a battery pack or tool that is damaged or modified. Damaged or modified batteries may exhibit unpredictable behaviour resulting in fire, explosion or risk of injury.
- f. Do not expose a battery pack or tool to fire or excessive temperature. Exposure to fire or temperature above 130 °C (265 °F) may cause explosion.
- g. Follow all charging instructions and do not charge the battery pack or tool outside the temperature range specified in the instructions. Charging improperly or at temperatures outside the specified range may damage the battery and increase the risk of fire.

## 6 SERVICE

- a. Have your power tool serviced by a qualified repair person using only identical replacement parts. This will ensure that the safety of the power tool is maintained.
- b. Never service damaged battery packs. Service of battery packs should only be performed by the manufacturer or authorized service providers.
- c. Only use original Festoon parts for repair and maintenance. The use of incompatible accessories or spare parts can result in electric shocks or other injuries.

Follow the operating manual for the charger and the battery pack.

### 3.2 Machine-specific safety notices

— Hold the power tool by insulated gripping surfaces, when performing an operation where the cutting accessory may contact hidden wiring. Cutting accessory contact with a “live” wire may make exposed metal parts of the power tool “live” and could give the operator an electric shock.

— Use clamps or another practical way to secure and support the workpiece to a stable platform. Holding the workpiece by hand or against your body leaves it unstable and may lead to loss of control.

— Use appropriate detection devices to look for any hidden supply lines or consult your local utility company. If the insertion tool makes contact with live cables, it can result in fire and electric shock. Damage to a gas pipe can lead to an explosion. Penetration of a water pipe can result in damage to property.

— Harmful/toxic dust may be produced during your work (e.g. paint containing lead, certain types of wood and metal). Only qualified persons are permitted to handle materials containing asbestos. Contacts with or inhalation of this dust may pose a risk for the operating personnel or persons in the vicinity. Comply with the safety regulations that apply in your country.



Wear a P2 respiratory mask to protect your health.





- Wear suitable personal protective equipment: Ear protection, protective goggles, dust mask for work that generates dust, protective gloves for working with rough materials and for changing tools.
- Grip the electric power tool securely so that your body never comes into contact with the operating tool, especially when working with saw blades or cutting tools directed towards the grip area, for example. Contact with sharp blades or edges can result in injuries.
- After machining materials that contain gypsum: Clean the vents of the power tool and on/off switch using dry, oil-free compressed air. Otherwise, gypsum dust deposits may build up inside the power tool's housing and on the on/off switch and harden when exposed to humidity. This may impair the switching mechanism
- Wait until the power tool has come to a complete halt before placing it down. The insertion tool can get caught and lead to a loss of control of the power tool.
- Do not use power supply units or third party battery packs to operate cordless power tools. Do not use third-party chargers to charge the battery packs. The use of accessories not expressly authorised by the manufacturer can result in electric shocks and/or serious accidents.
- Do not use the power tool in the rain or in damp surroundings. Moisture in the power tool may cause a short circuit and fire.

### 3.3 Metal processing



When processing metal, the following measures must be taken for safety reasons:

- Connect the machine to a suitable dust extractor.
- Regularly blow out the motor housing of the machine to remove dust deposits.



Wear protective goggles.

### 3.4 Health hazard by dust



**WARNING!** various dust created by power sanding, sawing, grinding, drilling and other construction activities contains chemicals known (to the State of California) to cause cancer, birth defects or other reproductive harm. Some examples of these chemicals are:

- lead from lead-based paints,
- crystalline silica from bricks and cement and other masonry products, and
- arsenic and chromium from chemically treated lumber.



The risk from these exposures varies, depending on how often you do this type of work. To reduce your exposure to these chemicals: work in a well ventilated area, and work with approved safety equipment, such as dust masks that are specially designed to filter out microscopic particles. Wash hands after handling.



**WARNING**  
**TO REDUCE THE RISK OF INJURY, USER MUST READ INSTRUCTION MANUAL.**

## 4 Intended use

Hand-held cordless oscillator designed for

- Sawing wood, plastic, glass-fibre reinforced plastic (GFRP), plasterboard and sawing sheet metal (max. 1 mm),
- Cutting out tile joints and window putty,
- Scraping away carpet residues and cutting elastic sealant,
- in a weatherproof environment,
- with the tools and accessories offered by Festoon.
- intended for use with BP Festoon battery packs of the same voltage class.

**Not suitable** for removing windows from passenger cars, lorries and buses or renovating concrete joints.



The user is liable for improper or non-intended use.

## 5 Technical Data

Cordless oscillator	OSC 18
Motor voltage	18 V
Speed	10000 - 19500 rpm
Oscillation angle	2 x 2.0°
Tool holder Compatible with	StarlockMax StarlockMax/ Starlock- Plus/Star- lock
Compatible with battery packs from the series	BP 18
Weight as per EPTA-Procedure 01:2014:	3.5 lbs (1.6 kg)

## 6 Functional description

- [1-1] Clamping lever for changing tools
- [1-2] On/off switch
- [1-3] Gripping surface
- [1-4] Cooling air openings
- [1-5] Capacity display
- [1-6] Capacity display button on battery pack
- [1-7] Button for releasing the battery pack
- [1-8] Battery pack
- [1-9] Speed control
- [1-10] Tool
- [1-11] Adapter\*
- [1-12] Depth stop with sliding shoe\*
- [1-13] Rotary depth stop\*
- [1-14] Dust extraction device\*

## [1-15] Positioning aid\*

\* Accessories shown or described are not always included in the scope of delivery. The pictures for the functional description are on a fold-out page at the beginning of the instruction manual. While reading the manual you can fold out the page for comparison and quick reference.

## 7 Commissioning

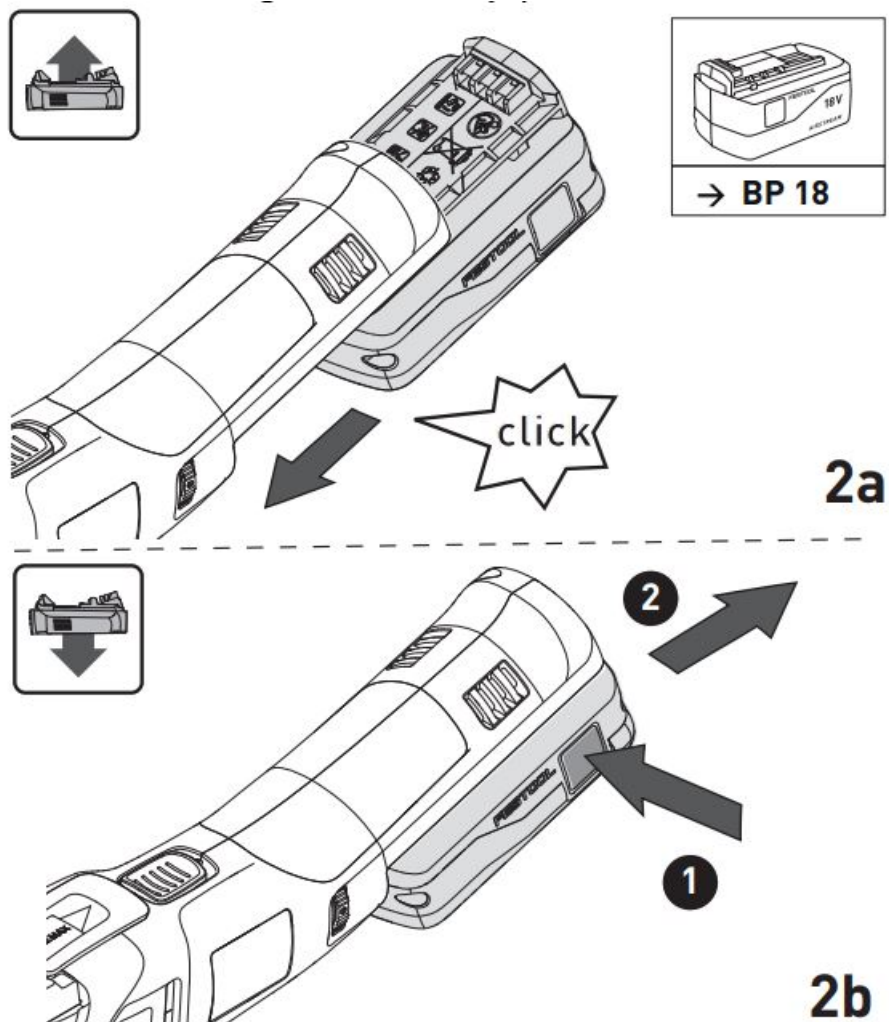
### 7.1 Switch on/off

The switch [1-2] is an on/off switch (I = ON, 0 = OFF).

When the battery pack is empty, or if there is a power failure or the mains plug is removed, move the on/off switch immediately to the Off position. This prevents uncontrolled restarting.

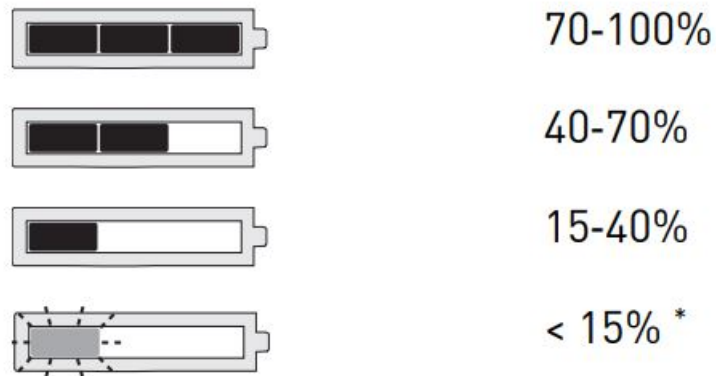
## 8 Battery pack

- Inserting the battery pack [2a]
- Removing the battery pack [2b]



### 8.1 Capacity display

The capacity display [1-5] indicates the charge of the battery pack for approx. 2 seconds after the button [1-6] is pressed:



\* **Recommendation:** Charge the battery pack before any further use.

Further information about the charger and battery pack with capacity indicator can be found in the corresponding operating manual.

## 9 Settings



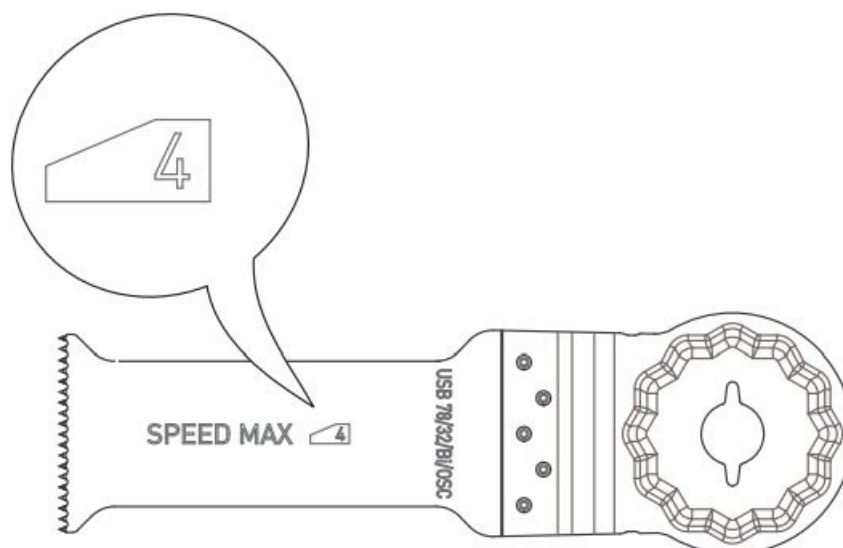
### **WARNING**

#### **Risk of injury**

► Remove the battery pack from the power tool before performing any work on the power tool.

### 9.1 Speed control

You can regulate the speed sleeplessly within the speed range using the adjusting wheel (see section Technical data). This enables you to optimise the speed to suit the respective material. Please also note the specifications on the tools. If an insertion tool is only suitable up to a maximum speed, the maximum speed is marked on the insertion tool (see Figure).



### 9.2 Changing tools



### **CAUTION**

#### **Hot and sharp tools Risk of injury**

- Do not use any blunt or faulty insertion tools.
- Wear protective gloves.

- Carefully remove the protective resin from the cutting edge of new tools.



### CAUTION

Tools that are not supplied or recommended by Festoon. Damage to machine caused by increased vibration load  
Risk of injury and harm to health

- Always use original Festoon tools.



### CAUTION

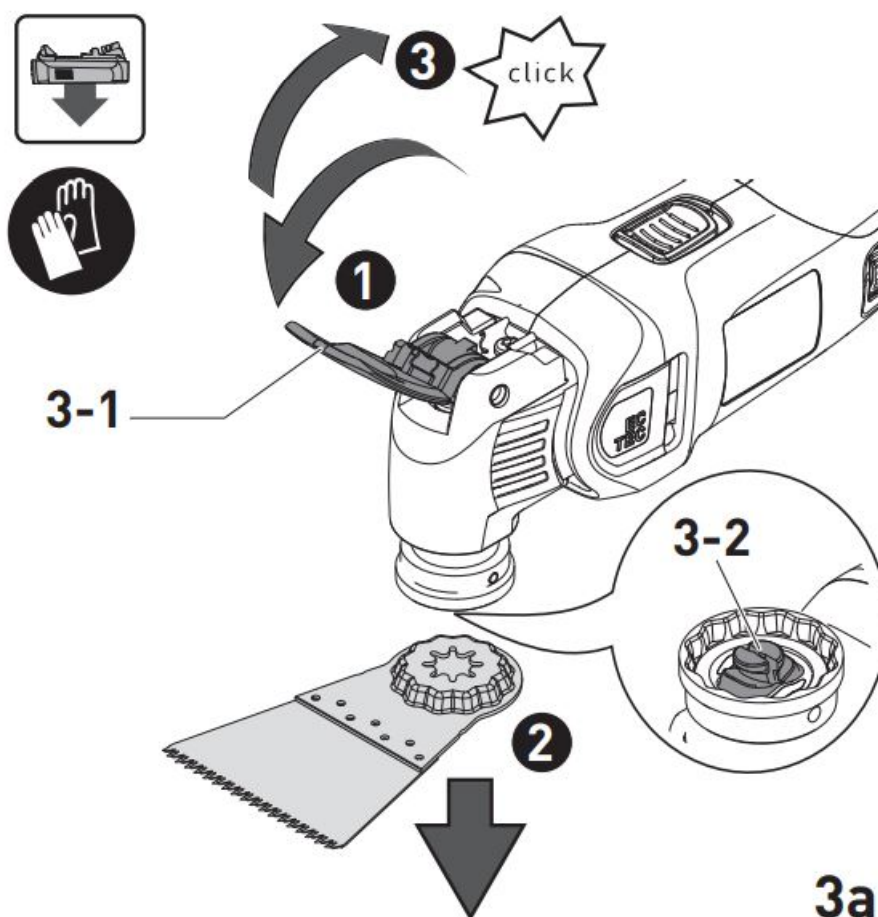
Risk of crushing hands and fingers If you switch on the insertion tool when the clamping lever is open, the clamping lever is closed by a spring force. Open clamping jaws are spring-loaded.

- Never switch on the power tool with the clamping lever open.
- Never reach into the area around the clamping jaws.

### Removing the insertion tool [3a]

- Open the clamping lever [3-1]. The insertion tool drops down.
- Close the clamping lever until it clicks into place.

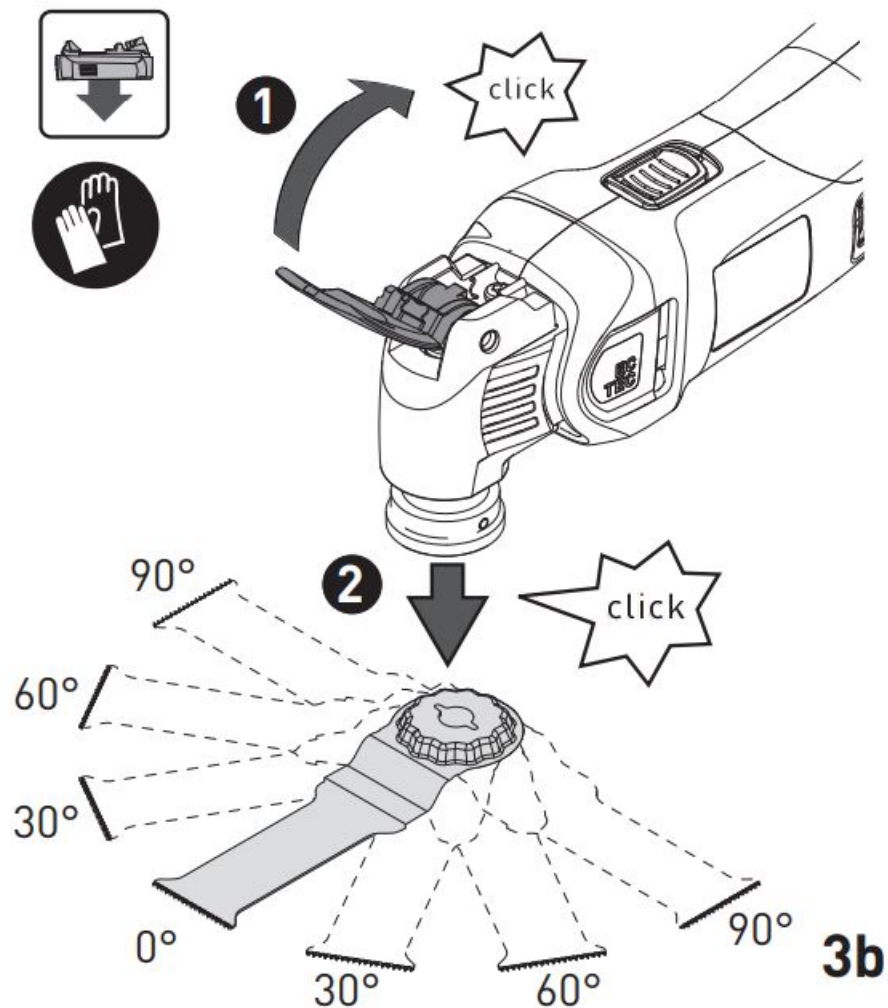
If the power tool switches on without the insertion tool, the clamping jaws [3-2] may open. This makes a popping sound.



### Inserting the insertion tool [3b]

If the clamping jaws [3-2] are open, open and close the clamping lever [3-1].

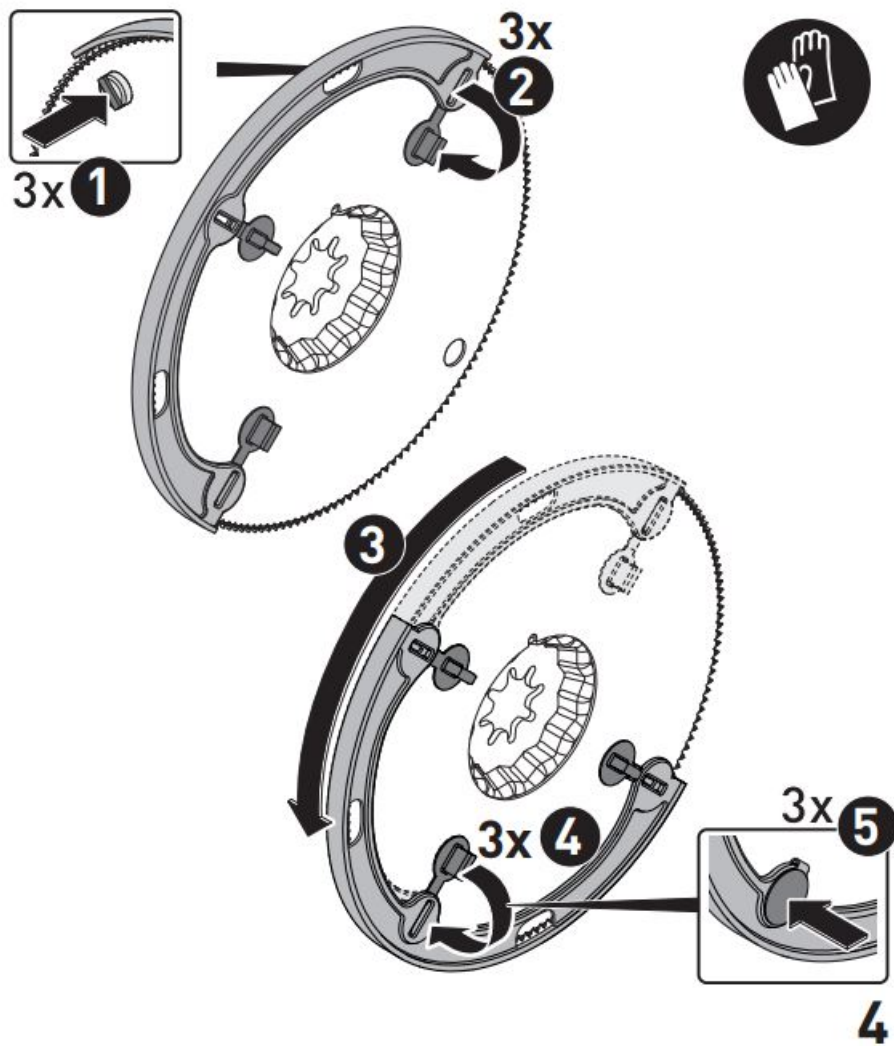
- Close the clamping lever until it clicks into place.
- Push the device onto the tool until it clicks into place.



① The tool can be offset in 30° increments and secured in the most effective working position.

① The protection (against accidental contact) on the saw blade may become twisted if wear has occurred, see fig. [4]





## 10 Working with the machine

### Observe the following information:

- Only guide the power tool towards the workpiece when it is switched on.
- A significant increase in the force required to advance the machine and slow working progress are indicators that the blades are worn.
- Hold the power tool by the gripping surface [1-3] with both hands to ensure safe guidance. Do not cover the cooling air openings [1-4] with your hand. Otherwise there is a risk of the machine overheating.
- Do not hold the power tool by the battery pack.
- Always secure the workpiece in such a way that it cannot move during machining.

## 11 Acoustic warning signals

If the power tool switches off due to one of the following operating states, a warning signal sounds when switching on the tool and the power tool switches off again.

### Battery pack not accepted

- Insert the correct battery pack model.

### Battery pack empty

- Change the battery pack.
- Charge the battery pack.

**Battery pack fault**

- Change the battery pack.
- Use the charger to check that the battery pack is fully functional once it has cooled down.

**Battery pack overheated**

- Let the battery pack cool down.

**Power tool overheated**


- You must allow the power tool to cool down before starting it up again.

**Power tool fault**

- Contact a Festoon service workshop or specialist dealer.

**Power tool jammed**

- Eliminate the cause of the jam.

 If the power tool switches off when it becomes jammed, no warning signal sounds.

## 12 Accessories

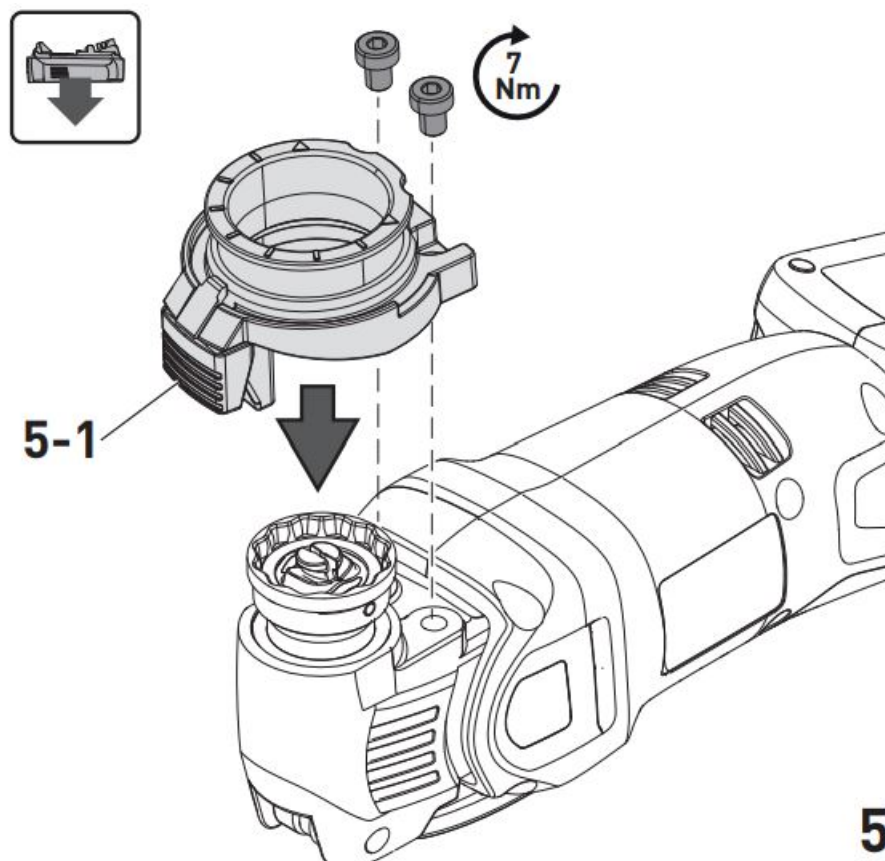
**WARNING**

Risk of injury Remove the battery pack from the power tool before performing any work on the power tool. Use only original Festoon accessories and Festoon consumable material intended for this machine. These components are designed specifically for this machine. Using accessories and consumable material from other suppliers will most likely affect the quality of your results and limit warranty claims. Machine wear or your own personal workload may increase depending on the application. Protect yourself and your machine, and preserve your warranty claims by always using original Festoon accessories and Festoon consumable material! The order numbers of the accessories and tools can be found in the Festoon catalogue or on the Internet under ["www.festoolusa.com"](http://www.festoolusa.com).

### 12.1 Mounting the adapter [5]

A depth stop, dust extraction device and positioning aid can be mounted on the adapter. Using the detent button [5-1], these can be offset in 30° increments in line with the tool.





## 12.2 Dust extraction



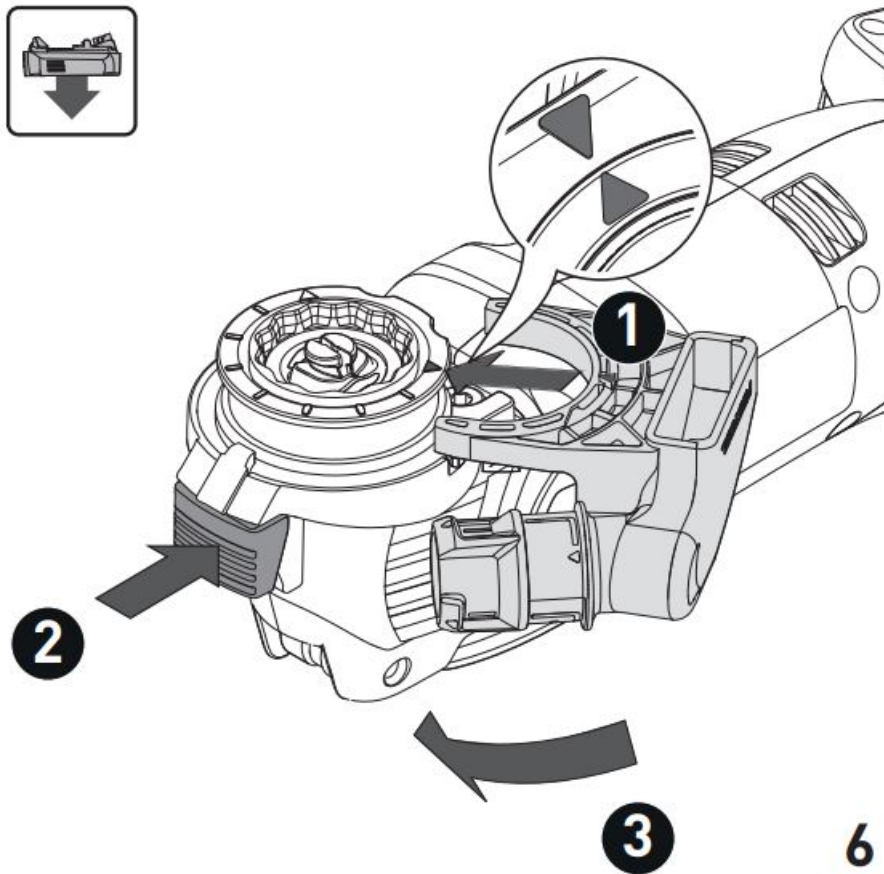
### WARNING

#### Health hazard posed by dust

- Only use a dust extractor designed to collect the specific type of dust and particles from the material being cut.
- Follow OSHA and NFPA regulations to ensure a safe work environment.

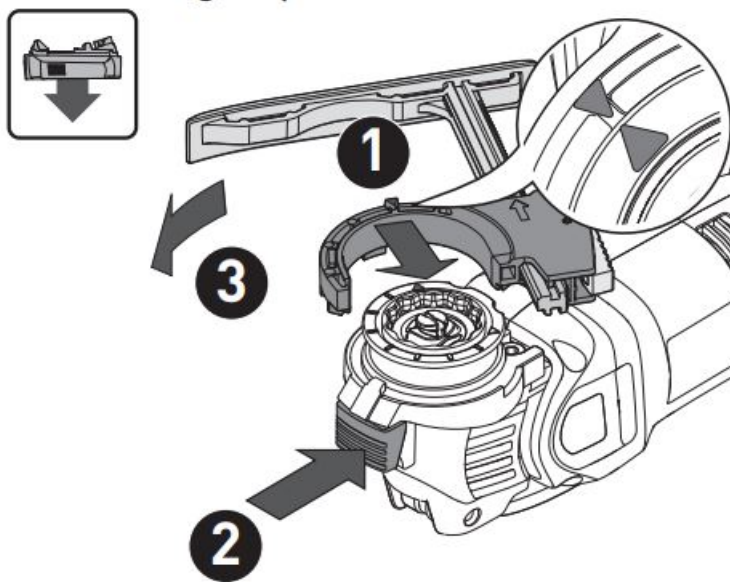
#### Dust extraction device [6]

- Mount the adapter [5].
- Attach the dust extraction device.
- Connect the suction hose.

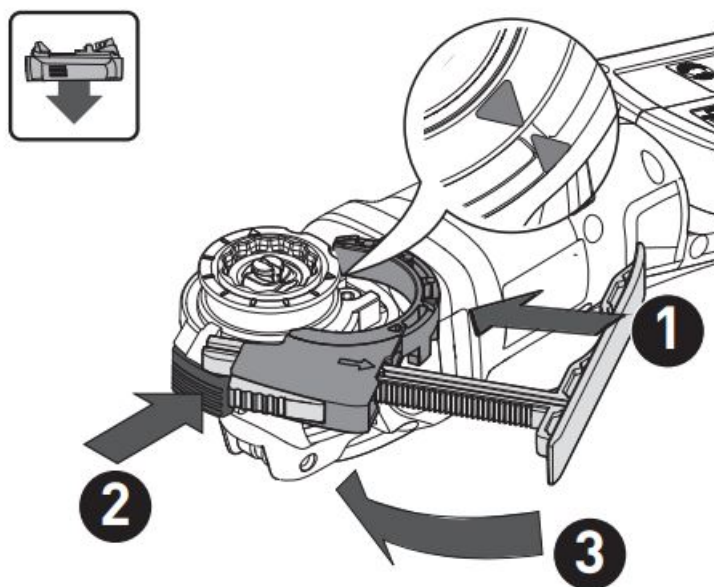


### 12.3 Depth stop [7+8]

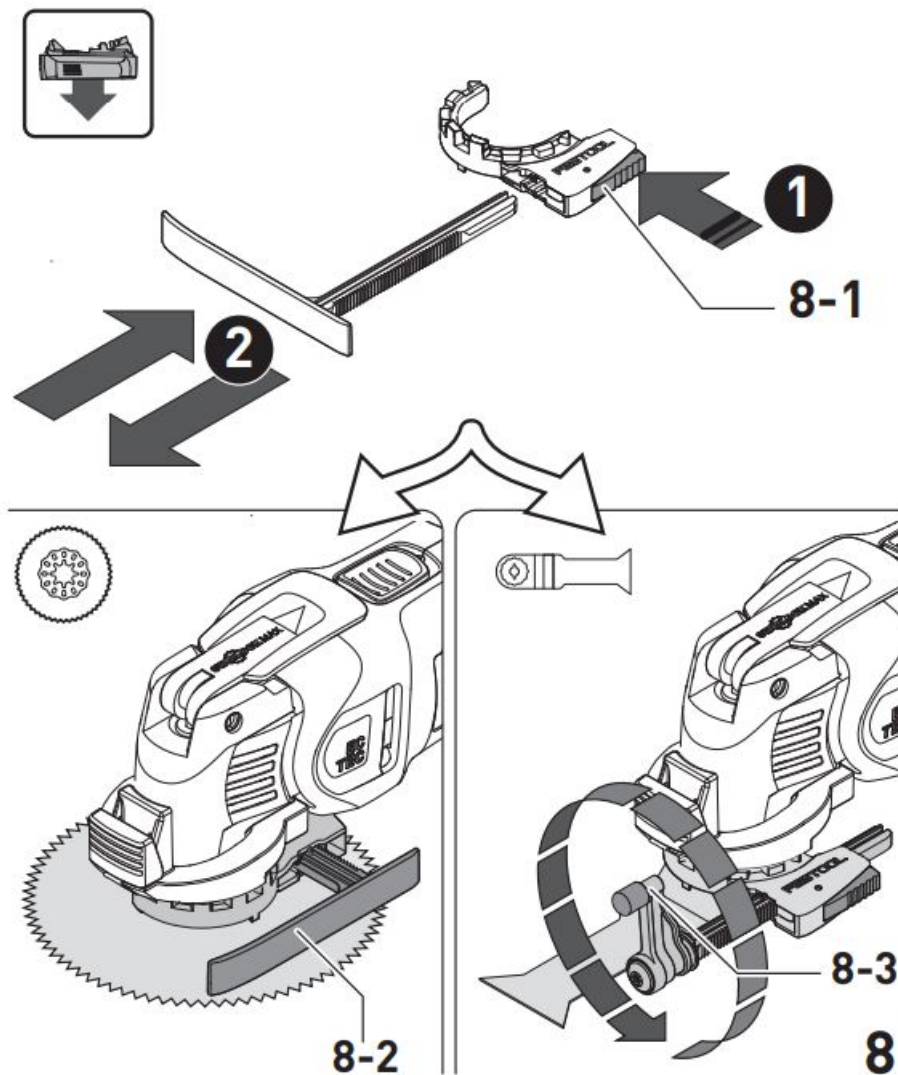
- ▶ Mount the adapter [5].
- ▶ Attach the depth stop [7a] or [7b].
- ▶ Engage the adjusting lever [8-1] to set the cutting depth.



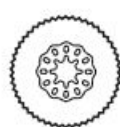
7a



7b



**i** Select the correct depth stop for the tool and replace if necessary:



Round tools      Sliding shoe **[8-2]**



Cutting blade      Rotary depth stop **[8-3]**

#### 12.4 Positioning aid [9+10+11+12]

**! WARNING**

**Sharp tools**  
**Pinching and cutting injuries**

- ▶ Always rest your fingers on the defined gripping surfaces [11-2].
- ▶ Always use the saw blades indicated in Fig. [11a]. Do not use short saw blades.

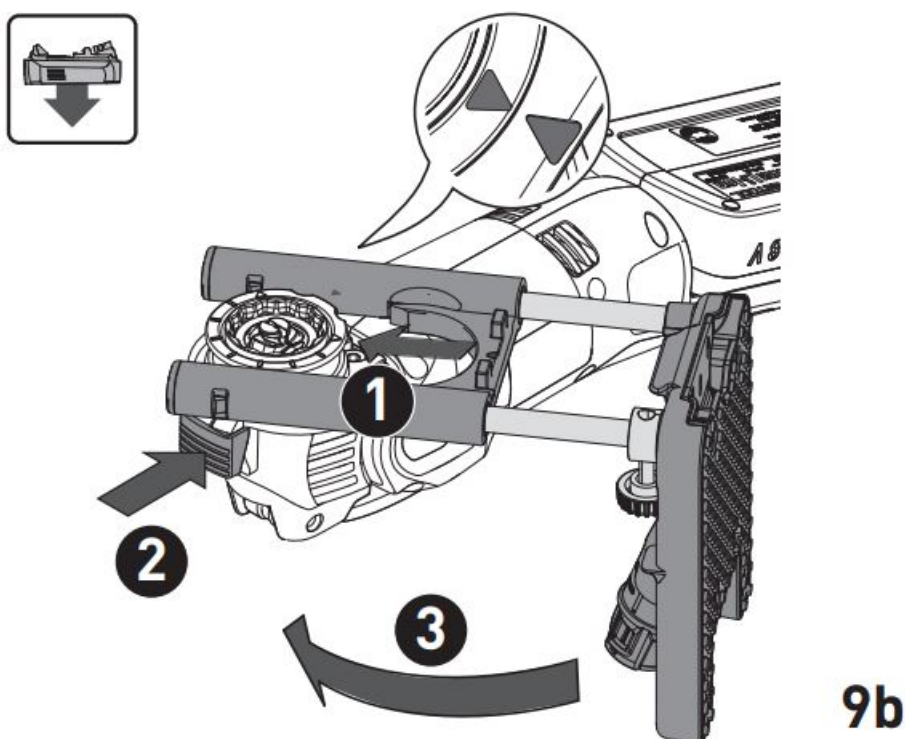
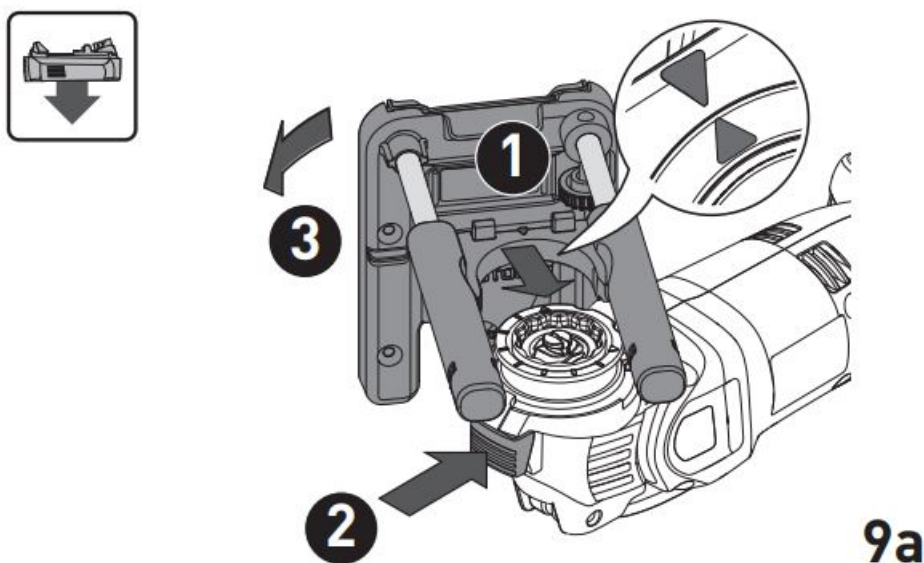
**! WARNING**

Risk of accident, electric shock If the tool comes into contact with live cables, an electric current may be diverted through metal components in the tool and result in electric shock.

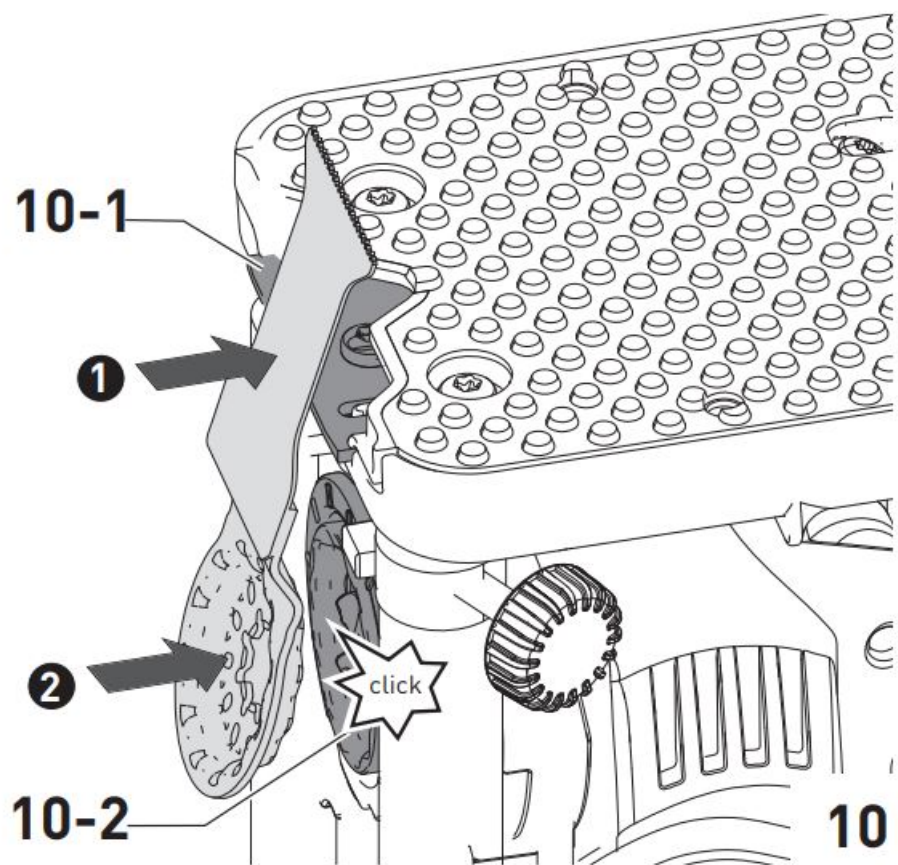
► Hold the power tool by the insulated grip ping surfaces when performing work that may pose a risk of cutting into hidden power cables.

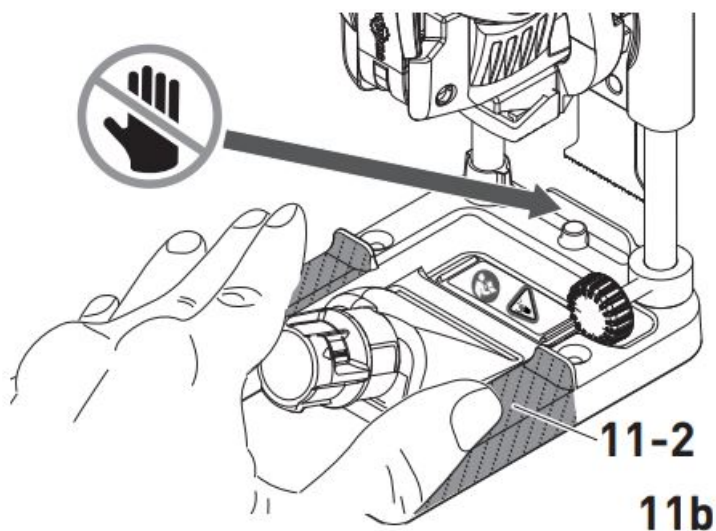
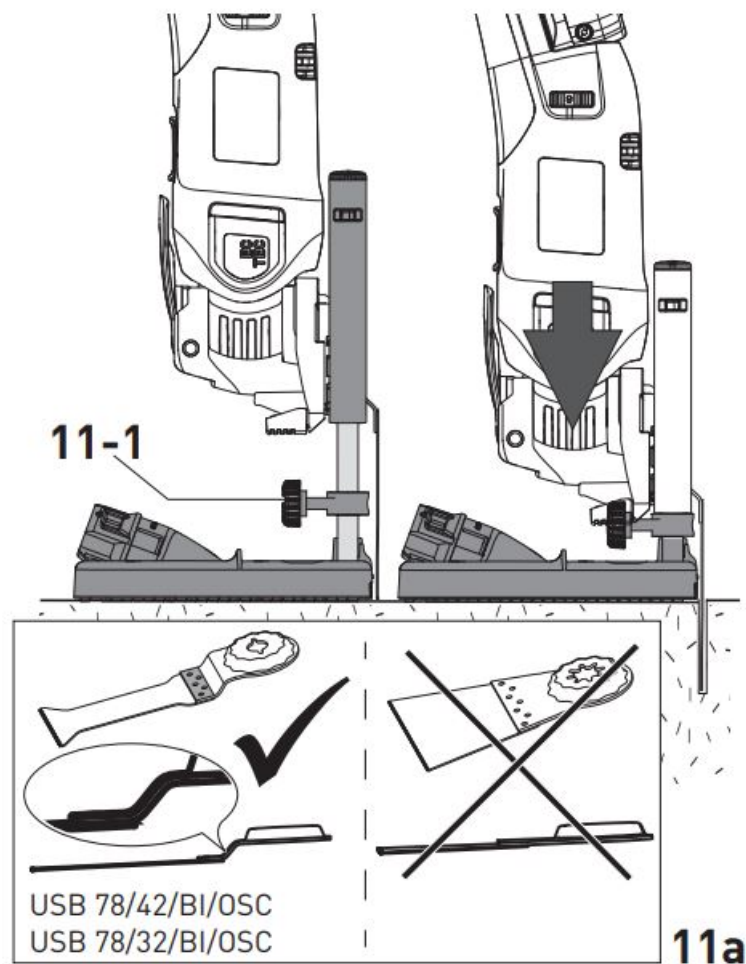
#### Using the positioning aid

- Mount the adapter [5].
  - Attach the positioning aid [9a] or [9b].
  - First place the application tool on the saw blade guide [10-1], then push it into the holder [10-2] until it engages. This is necessary to ensure that the application tool is positioned correctly on the saw blade guide.
  - Adjust the cutting depth [11-1].
- Always tighten the cutting depth adjustment [11-1].





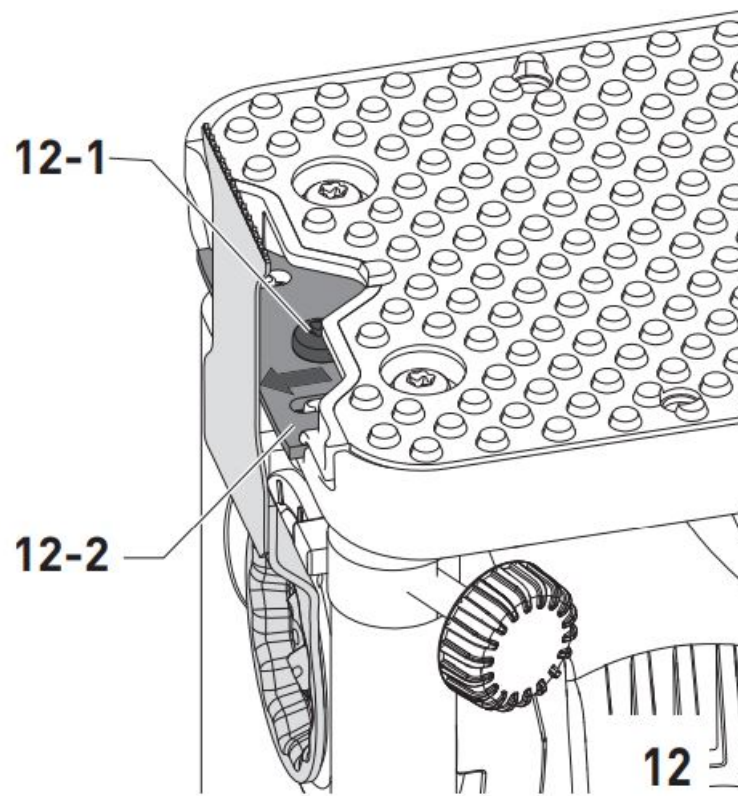




### Readjusting the saw blade guide

First check to ensure that the application tool has been inserted in the correct order (see figure [10]). If the saw blade is still not positioned on the saw blade guide, take the following steps:

- ▶ Set the cutting depth [11-1] to the maximum depth. Tighten the cutting depth adjustment [11-1].
- ▶ Loosen the screw [12-1] on the saw blade guide [12-2].
- ▶ Move the saw blade guide to the saw blade.
- ▶ Tighten the screw [12-1] on the saw blade guide.



## 12.5 SYSTAINER

### Sustained

Many Festoon products are shipped in a unique system container, called "Sustained". This provides protection and storage for the tool and accessories. The Strainers are stackable and can be interlocked together. They also can be interlocked atop Festoon CT dust extractors.

### To open the Systainer



Turn the T-loc **[SYS-b-1]** to this position.

### To lock the Systainer



Turn the T-loc **[SYS-b-1]** to this position.

### To connect two Strainers

Place one Sustained on the top of the other (Fig. **[SYS-a]**).

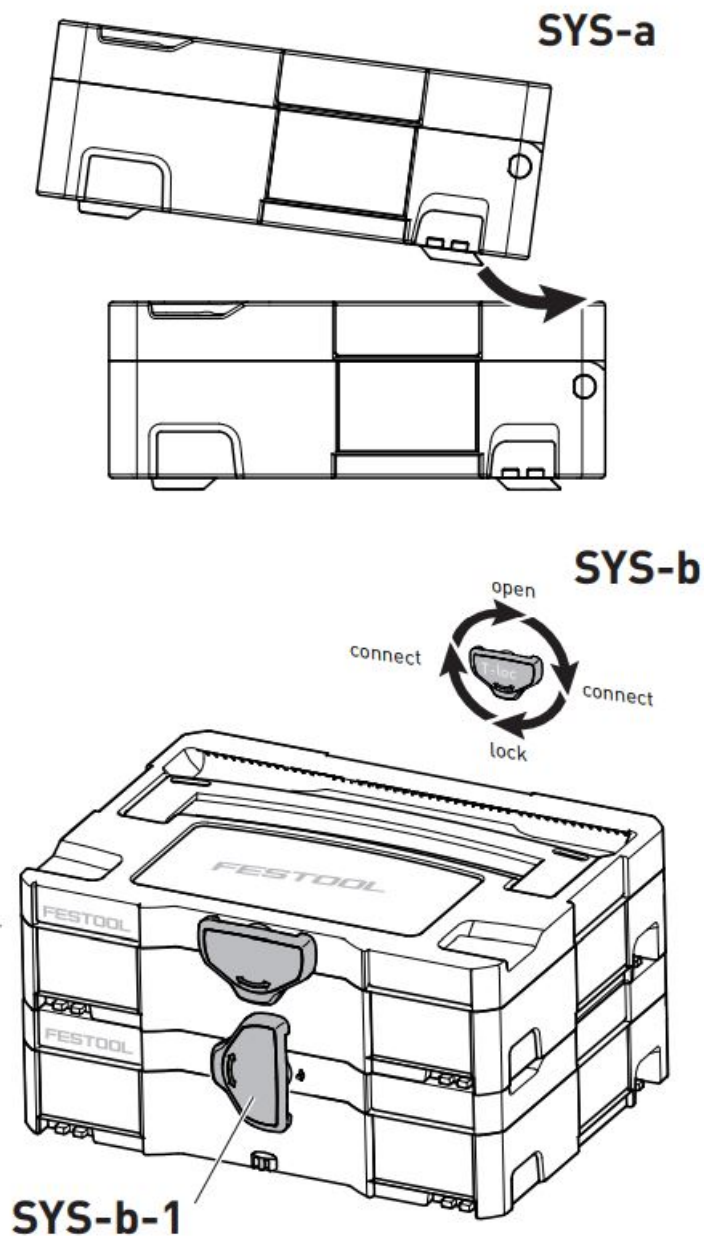


Turn the T-loc **[SYS-b-1]** to one of these positions (Fig. **[SYS-b]**).

The Strainers are connected and locked.

**i** A new generation Sustained is connectable on top of a previous generation Sustained by the four latches of the previous Sustained.





## 13 Service and maintenance



### **WARNING**

#### **Risk of injury, electric shock**

Always disconnect the battery pack from the machine before any cleaning or maintenance!



### **WARNING**

Any maintenance or repair work that requires opening of the motor or gear housing should only be carried out by an authorised Customer Service Centre (name supplied by your dealer)!

► Maintenance or repair work carried out by an unauthorised person can lead to the wrong connection of the power cord or other components, which in turn can lead to accidents with serious consequences.



### **CAUTION**

► Certain cleaning agents and solvents are harmful to plastic parts. Some of these include, but are not limited to: Gasoline, Acetone, Methyl Ethyl Ketone (MEK), Carbonyl Chloride, cleaning solutions containing Chlorine, Ammonia, and household cleaners containing Ammonia.



**Customer service and repairs** must only be carried out by the manufacturer or service workshops. Find the nearest address at:  
[www.festoolusa.com/service](http://www.festoolusa.com/service)



Always use original Festool spare parts. Order no. at:  
[www.festoolusa.com/service](http://www.festoolusa.com/service)

[www.festoolusa.com/service](http://www.festoolusa.com/service)

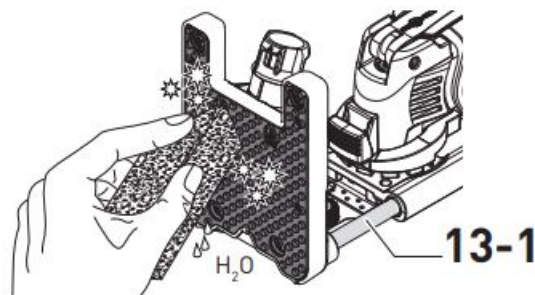
To ensure constant air circulation, always keep the cooling air openings in the motor housing clean and free of blockages.

Keep the contacts on the power tool, charger and battery pack clean.

When machining materials that contain gypsum, dust deposits may build up inside the power tool and on the on/off switch and harden when exposed to humidity. This may impair the switching mechanism. After each machining process, blow out the inside of the power tool through the vents and the on/off switch using dry, oil-free compressed air.

### 13.1 Information on the positioning aid

Clean any dust deposits from guides [13-1] and contact surfaces. Oil the guides regularly and lightly with resin-free oil (e.g. sewing machine oil).



13

Check all warnings on the electric power tool for readability and completeness. Replace missing or illegible warnings.

## 14 Environment

Do not dispose of the device together with domestic waste! Dispose of machines, accessories and packaging at an environmentally responsible recycling centre. Observe the valid national regulations.

### Battery Disposal




**WARNING**

#### Risk of fire or injury

- Do not attempt to disassemble the battery or remove any component projecting from the battery terminals.
- Prior to disposal, protect exposed terminals with heavy insulating tape to prevent shorting.

## Documents / Resources

	<p><b>FESTOOL OSC 18 Cordless Oscillator</b> [pdf] Instructions OSC 18, Cordless Oscillator, OSC 18 Cordless Oscillator, Oscillator</p>
---	---

References

- [F Festool España | Fabricando Herramientas Profesionales desde 1925](#)
- [F Nuestros Servicios Personalizados | Rendimiento sin concesiones ? Festool](#)
- [F Festool Services | Le service après-vente pour vous et votre machine](#)
- [F Festool United States - Professional Power Tools for Superior Craftsmen](#)
- [F Festool customer service | Service for you and for your tool](#)