

**Contents** [ [hide](#) ]

- [1 FERVE F-505 Jump Starter and Power Source](#)
- [2 Specifications](#)
- [3 Product Usage Instructions](#)
- [4 CLAMP MODULE LED](#)
- [5 MAINTENANCE](#)
- [6 FAQs](#)
- [7 Documents / Resources](#)
  - [7.1 References](#)

# FERVE

## FERVE F-505 Jump Starter and Power Source



## Specifications

- **Model:** F-505
- **Product Name:** BOOSTER BOX
- **Peak Current:** 800 A
- **Battery Capacity:** 18000mAh LITHIUM
- **Output:**
  - 5V – 2.1 A (USB)
  - 14V – 1 A
  - 12V – 10 A MAX.
  - USB Output: 5V – 2.4 A
- **Dimensions:** 227 x 29 x 95 mm
- **Weight:** 1,250 kg

## Product Usage Instructions

### Charging Process

1. Connect the 14V 1A charger to the 14V 1A inlet on the F-505 and a power socket.
2. Alternatively, connect the charging cable to the 14V 1A inlet on the F-505 and the vehicle lighter socket while the engine is running.
3. The F-505 can also be charged in the USB-C inlet (5V 2.4 A) using any mobile charger.
4. The LCD will show the battery level during charging. Charge until it reaches 100% (FUL displayed).
5. Do not attempt to start a vehicle with the battery below 80%.

### Starting the Engine

1. Once charged, connect the clamp module to the booster.
2. Connect the red clamp to the positive terminal of the battery and the black clamp to the negative terminal. The green LED light should turn on.
3. Avoid clamps touching each other to prevent a short circuit.
4. Remove clamps in reverse order after starting the engine: black clamp first, then red clamp.

## PRECAUTIONS

- Read the instruction manual before using the. FERVE F-505
- Avoid flames and sparks.
- Battery acid is corrosive.
- Use it in a well-ventilated place.
- Do not expose the equipment to rain.
- Attention! Explosive gas.

## BOOSTERS

### OPERATING INSTRUCTIONS AND SAFETY MANUAL

For more information, go to: <https://www.ferve.com/images/Publicaciones/manual-seguretat-ARRENCADORS.pdf>.

## BOOSTER BOX

<b>BOOSTER</b>	12 V - 400 A
<b>PICO PEAK</b>	800 A
<b>ENTRADA INPUT</b>	14 V - 1 A USB 5 V - 2.1 A
<b>SALIDA OUTPUT</b>	12 V - 10 A MAX. USB 5 V - 2.4 A



227 x 29 x 95 mm  
1,250 kg

## Included



Case with zipper



Clamps with protector



14V 1A charger



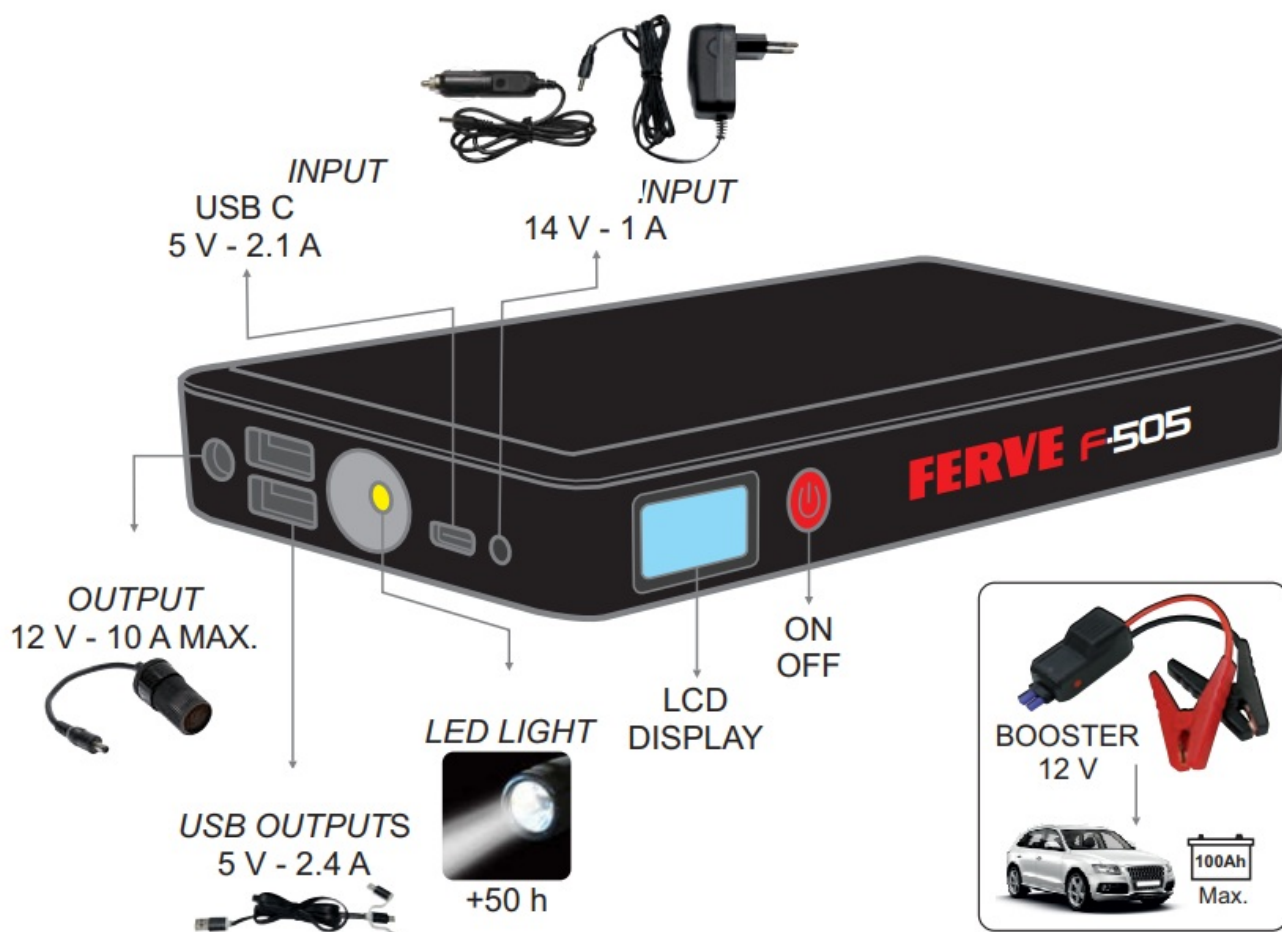
USB multi-connector



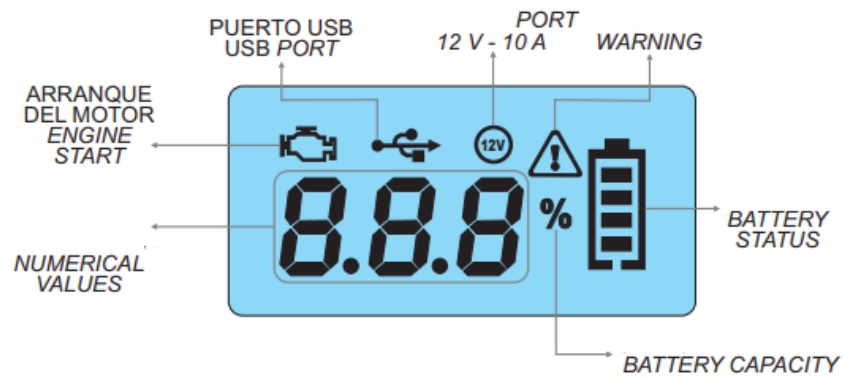
12V charger



12V 10A connector



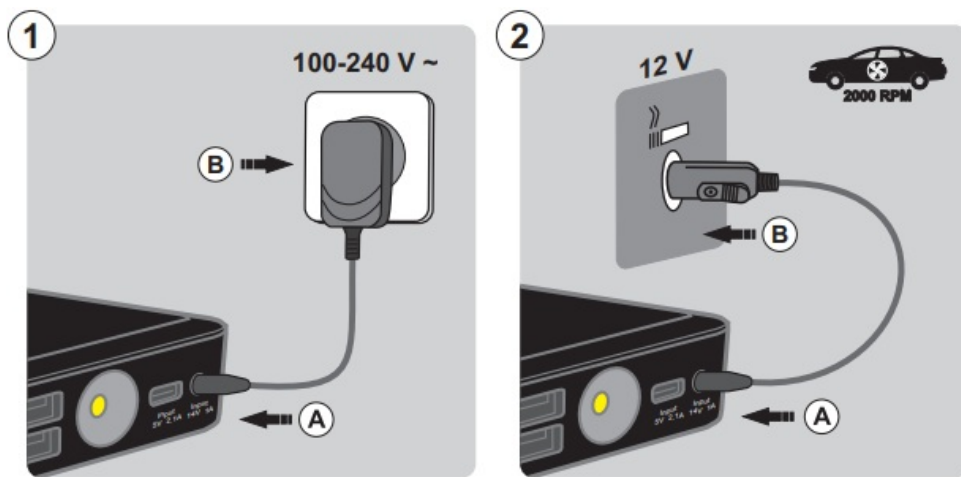
## LCD DISPLAY



## FERVE F-505 CHARGING PROCESS



## CHARGING PROCESS



1. With a 14 V 1A charger: Connect the charger to the 14 V 1A inlet on the F-505 (A) and to a power socket (B).
2. With a 12 V charger: Connect the charging cable to the 14 V 1A inlet on the F-505 (A) and the vehicle lighter socket (B). The vehicle engine must be running. The F-505 may also be charged in the USB-C inlet (5 V 2.4 A) using any mobile charger (not supplied).



- During the charging process, the LCD will show the internal battery level in %.
- Once it reaches 100%, the screen will display “FUL” on the screen.

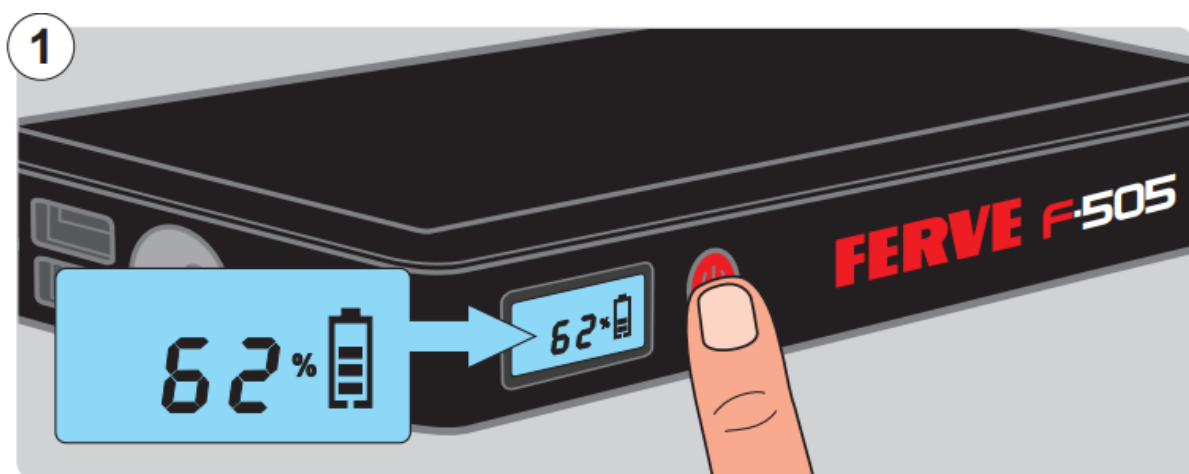
**IMPORTANT:** Do not try to start the vehicle with the battery below 80%. Charge the F-505 after each use.

## 12V BOOSTER

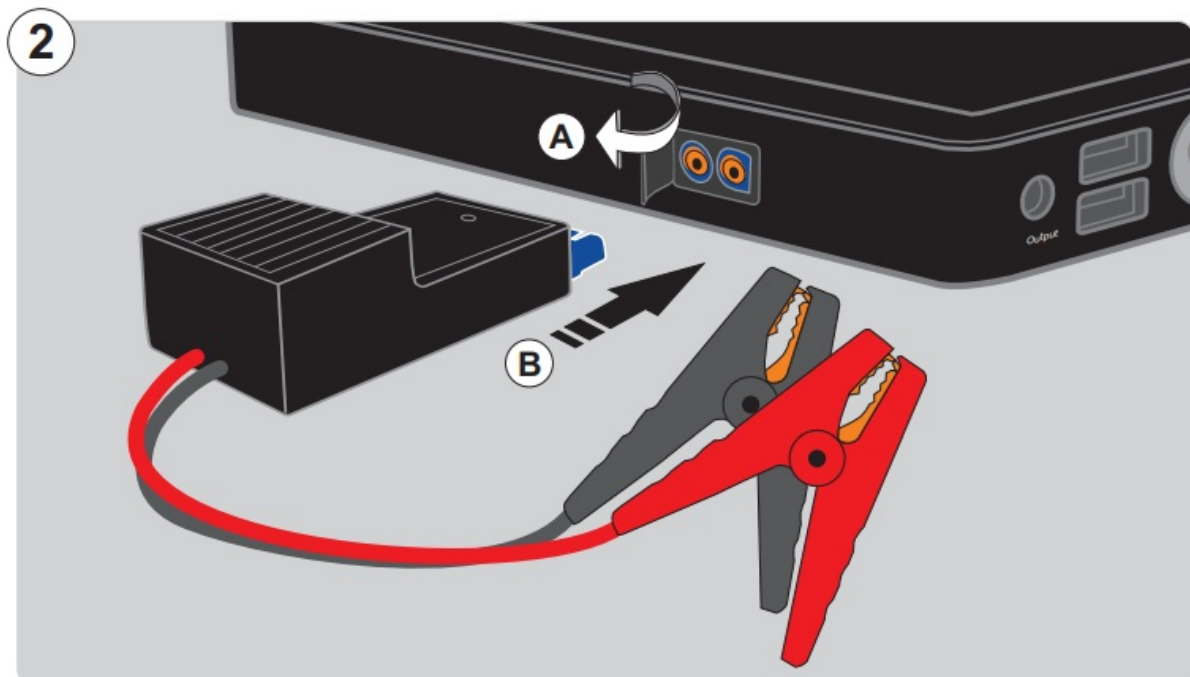


## BOOSTER 12 V

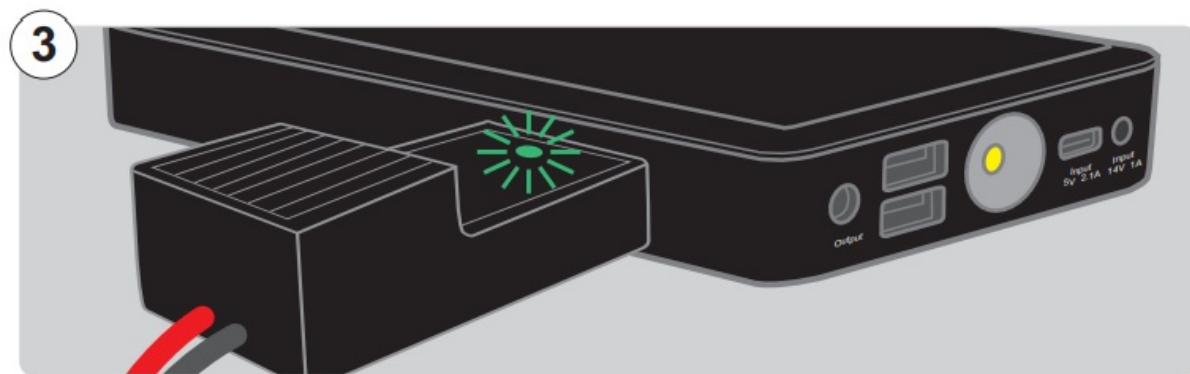
Before proceeding with the start-up, check the charging status of the FERVE F-505 by pressing the "ON/OFF" button. If the battery level is lower than 80%, charge the (page 6).



Once the F-505 is charged, connect the clamp module to the booster.

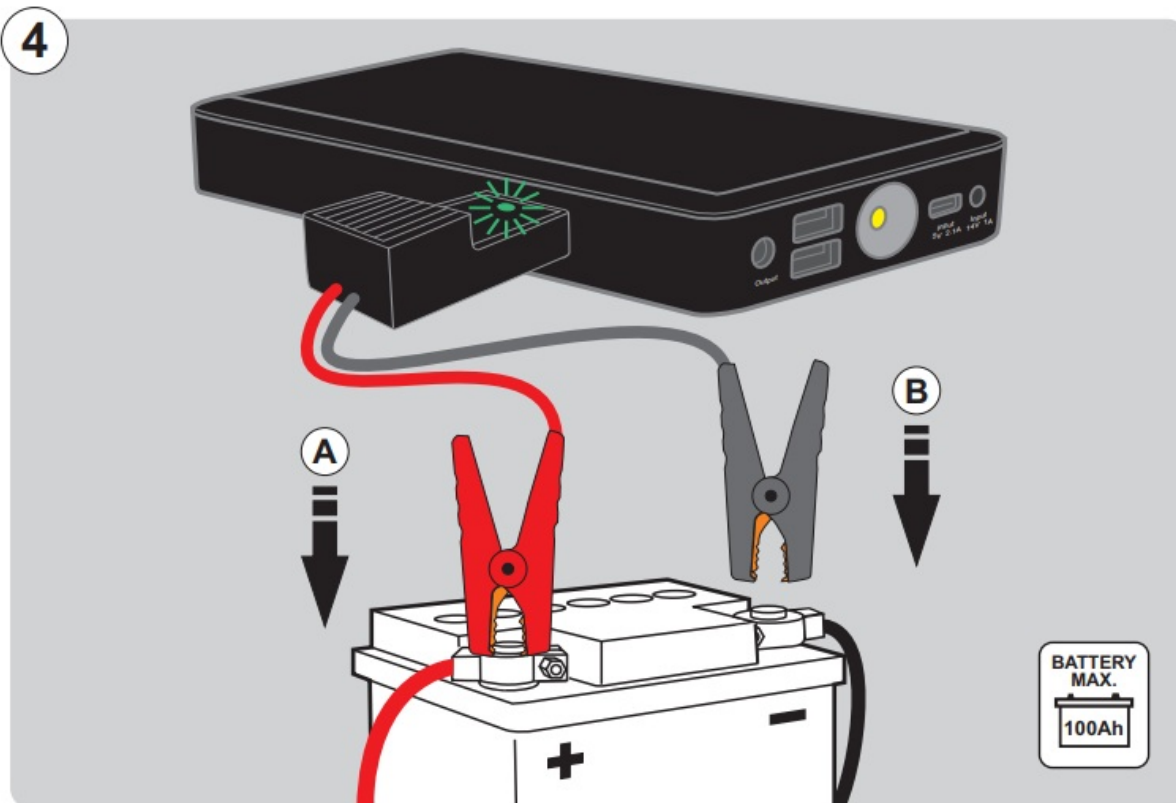


**The green LED light on the clamp module will blink.**

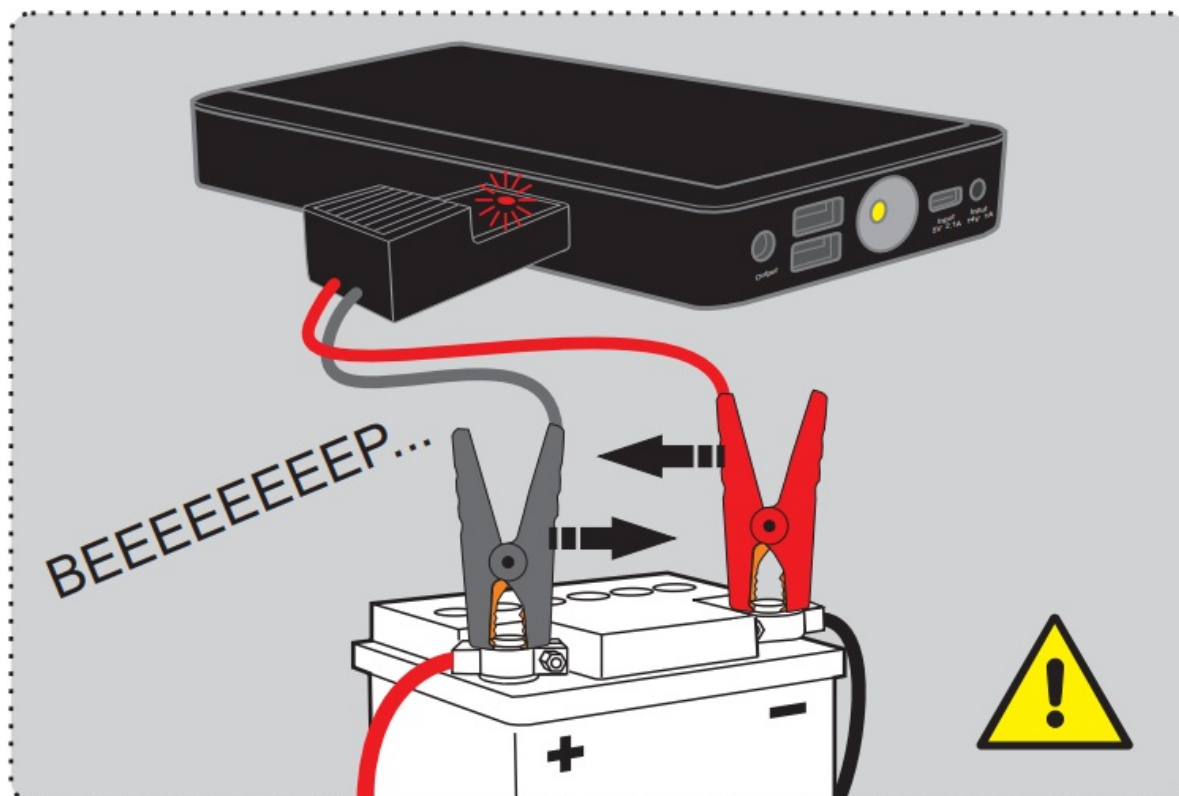


Connect the clamps to the battery in this order: first, the red clamp to the positive terminal + (A) and then the black clamp to the negative terminal – (B). The green LED light on the clamp module will stay on. Important: The F-505 is enabled after this. Do not allow the clamps to touch each other, as it may cause a short circuit.





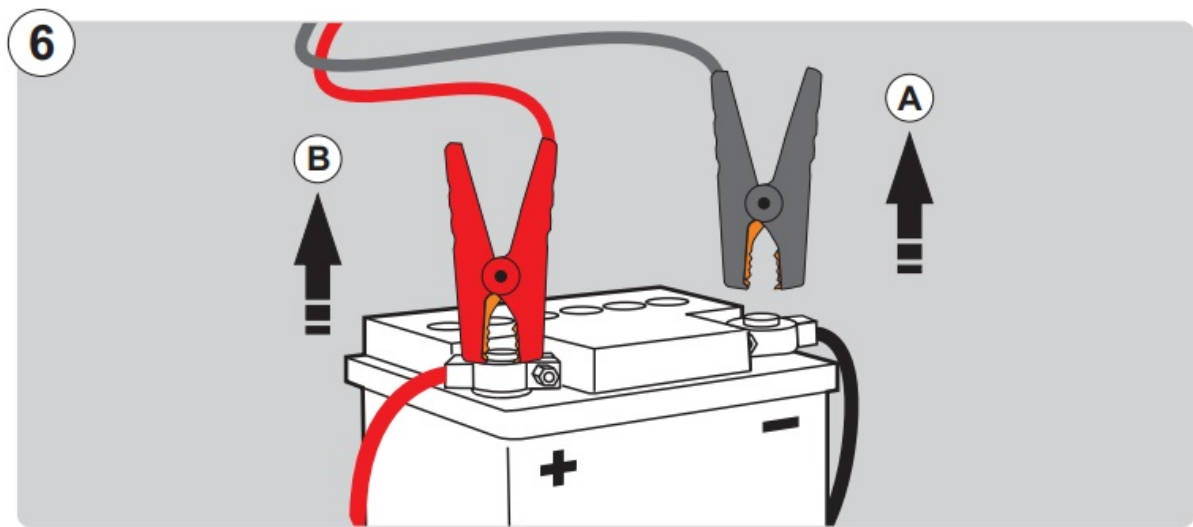
- If the clamps are reversed (red on the negative terminal and black on the positive terminal), the red LED lights up and a beep sounds. Switch the position of the clamps.



- Turn off any equipment connected to the vehicle (lights, audio, fan, etc.). Start the vehicle.
- Do not insist for more than 3 seconds. Wait 1 minute between each attempt.





















- After the start-up, first remove the black clamp from the – terminal (A) and finally the red clamp from the positive + terminal (B).



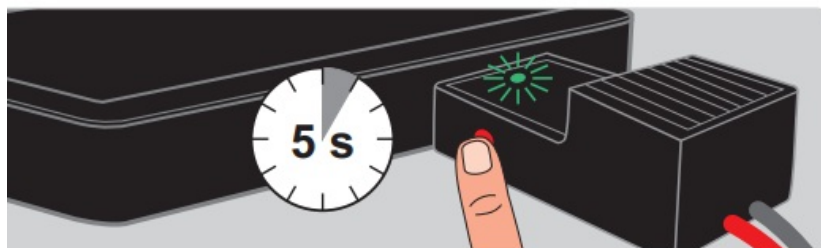
## CLAMP MODULE LED

The LED light on the clamp module will indicate the following:

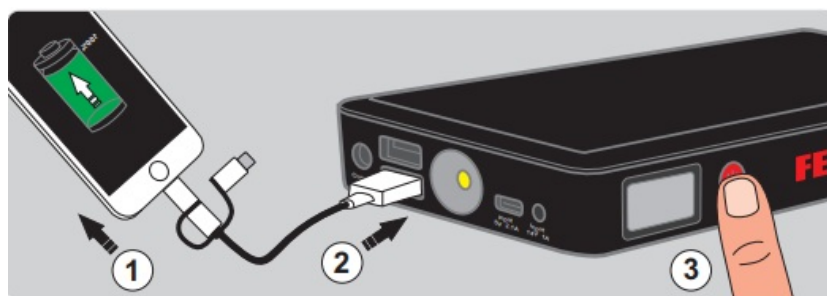
Green led	Red led	Sound	Description
			High input voltage
			Clamps not connected
			Low vehicle battery
			Expired wait time
			Incorrect connection to high voltage. Slow flash
			Reversed polarity connection. Rapid flash
			Short circuit warning
			High temperature warning
			Low F-505 battery; charge the booster
			Ready for start-up

## OVERRIDE MODE

If the F-505 does not detect the vehicle battery because the voltage is too low, press the clamp module button for 5 seconds (the LED light blinks green and a beep sounds) until the green LED light stays fixed. Important: This function cancels the reversed polarity protection. Connect the clamps for the proper polarity; otherwise, there may be a short circuit.



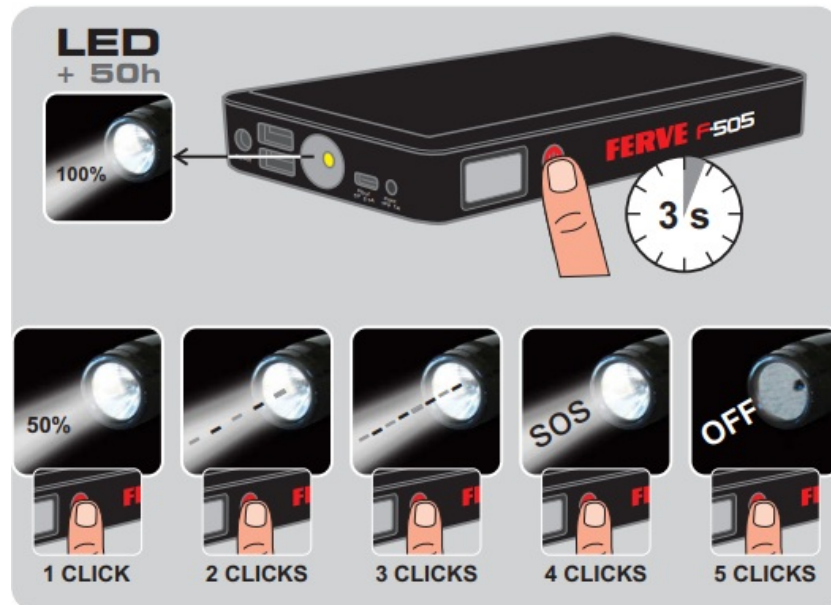
## USB OUTPUT



The USB multi-connector can be used to charge any electronic devices through the F-

505. To do so, insert one of the three connectors into the device to be charged (1), and then in one of the two USB outlets (5 V 2.4 A) on the F-505 (2). Finally, begin charging by pressing the “ON/OFF” button (3).

## LIGHT



- 1 click: Potencia al 50%
- 2 clicks: Modo flash lento.
- 3 clicks: Modo flash.
- 4 clicks: Modo señal SOS.
- 5 clicks: Off.

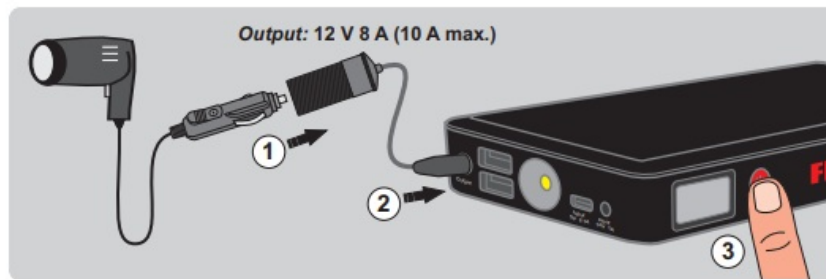
To activate the LED light on the F-505, hold the “ON/OFF” button down for 3 seconds. The fixed LED light will turn on at 100% power. There are other functions as well which activate by quickly pressing the “ON/OFF” button again and again.

- Clicks: Slow flash mode.
- 3 clicks: Flash mode.
- 4 clicks SOS signal mode.
- 1 click: Power at 50%

## OUTPUT 12 V 8 A (10 A MAX.)

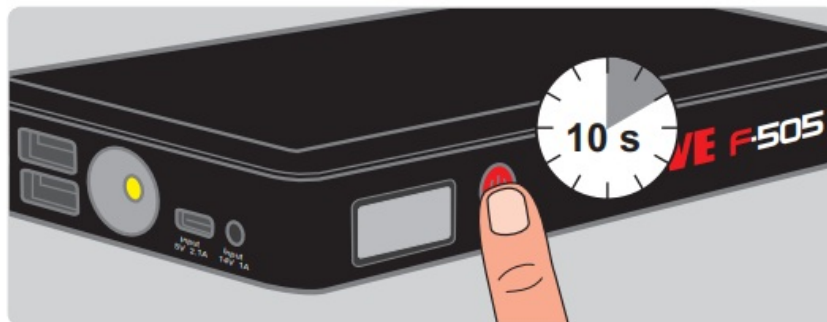
The 12 V 10A connector can power any 12 V device using the F-505. To use it in this way, insert the device to be powered in the 12 V connector (1) and the connector in the “Output” socket on the F-505 (2). Finally, begin operation by pressing the “ON/OFF”

button (3).



## SAFETY LOCK

The F-505 can be blocked so it doesn't accidentally turn on. Press the "ON/OFF" button down for 10 seconds, and the two USB sockets and the output socket (12 V 10 A) will be blocked. To return to normal operation, press the "ON/OFF" button down for 10 seconds.



## MAINTENANCE



## WARRANTY

FERVE warrants this device against all defective manufacturing or parts for 36 months as of the purchase date, except consumables such as batteries. This warranty excludes damages caused by mishandling, dirt and filth, improper connection or power, accidents and, in general, any damages arising from causes that are external to the device. Any

other warranty performance agreed to by the distributor shall be the exclusive liability of this party. Furthermore, this document does not cover wear or damage caused to other goods or assets as a result of a fault in the device under warranty. This warranty is only valid when accompanied by the original invoice or sales receipt. This warranty shall lose validity if the device is handled by personnel or shops not related to our technical service.

## FAQs

**Q: What should I do if the F-505 battery level is below 80%?**

A: Charge the F-505 before attempting to start a vehicle to prevent potential issues.


**Q: Can I charge the F-505 with any mobile charger?**

A: Yes, you can charge the F-505 using a USB-C in-line adapter with any mobile charger that provides a 5V2.4A or 5V2.4A

**How do I know when the F-505 is fully charged?**

A: The LCD will show 100% battery level with FUL displayed once fully charged.

## Documents / Resources

	<a href="#">FERVE F-505 Jump Starter and Power Source [pdf]</a> Instructions F-505, 2005051 - 0123, F-505 Jump Starter and Power Source, F-505, Jump Starter and Power Source, Starter and Power Source, Power Source
---	--

## References

- [User Manual](#)

FERVE

2005051 - 0123, F-505, F-505 Jump Starter and Power Source, FERVE, Jump Starter and Power Source, Power Source, Starter and Power Source

---

## Leave a comment

Your email address will not be published. Required fields are marked \*

Comment \*

Name

Email

Website

☐ Save my name, email, and website in this browser for the next time I comment.

**Post Comment**

**Search:**

[Manuals+](#) | [Upload](#) | [Deep Search](#) | [Privacy Policy](#) | [@manuals.plus](#) | [YouTube](#)

This website is an independent publication and is neither affiliated with nor endorsed by any of the trademark owners. The "Bluetooth®" word mark and logos are registered trademarks owned by Bluetooth SIG, Inc. The "Wi-Fi®" word mark and logos are registered trademarks owned by the Wi-Fi Alliance. Any use of these marks on this website does not imply any affiliation with or endorsement.