



Contents [[hide](#)]

- [1 FERPORT XLX22024L ARMAS Externally Driven Flash](#)
- [2 Product Usage Instructions](#)
- [3 OPERATING AND INSTALLATION INSTRUCTIONS](#)
- [4 TECHNICAL SPECIFICATIONS](#)
- [5 DIAGRAM](#)
- [6 FAQ](#)
- [7 Documents / Resources](#)
 - [7.1 References](#)

FERPORT

FERPORT XLX22024L ARMAS Externally Driven Flash



Specifications

- **Dimensions:** Lamp L78xH97xP36, Base L50xH25xP48
- **Power Supply:** 24Vac, 24Vdc, or 230Vac

- **Flashing Options:** Autolampeggio (2Hz) or with externally driven flash
- **J1 Settings:** C = Flashing externally managed, F = Flashing automatically managed
- **STO1:** Bracket for wall or pole mount
- **FUSE:** 1A Fuse

Product Usage Instructions

Power Supply Connection

Connect the power supply to the appropriate voltage source (24Vac, 24Vdc, or 230Vac) following the specified connections for DC or AC.

Flashing Settings

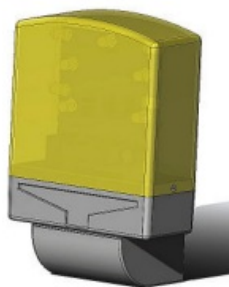
Use jumper J1 to select the flashing mode. Insert the bridge for:

- C = Flashing externally managed
- F = Flashing automatically managed

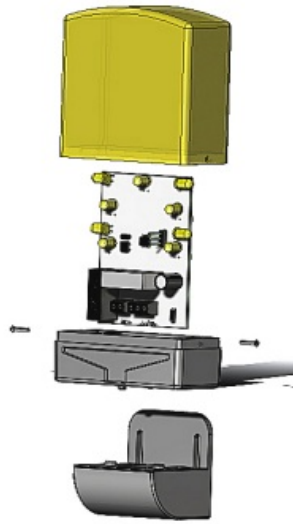
Mounting Instructions

Mount the flashlight in a vertical position with the dome upward. Ensure there is no voltage in the cables before installation.

OPERATING AND INSTALLATION INSTRUCTIONS



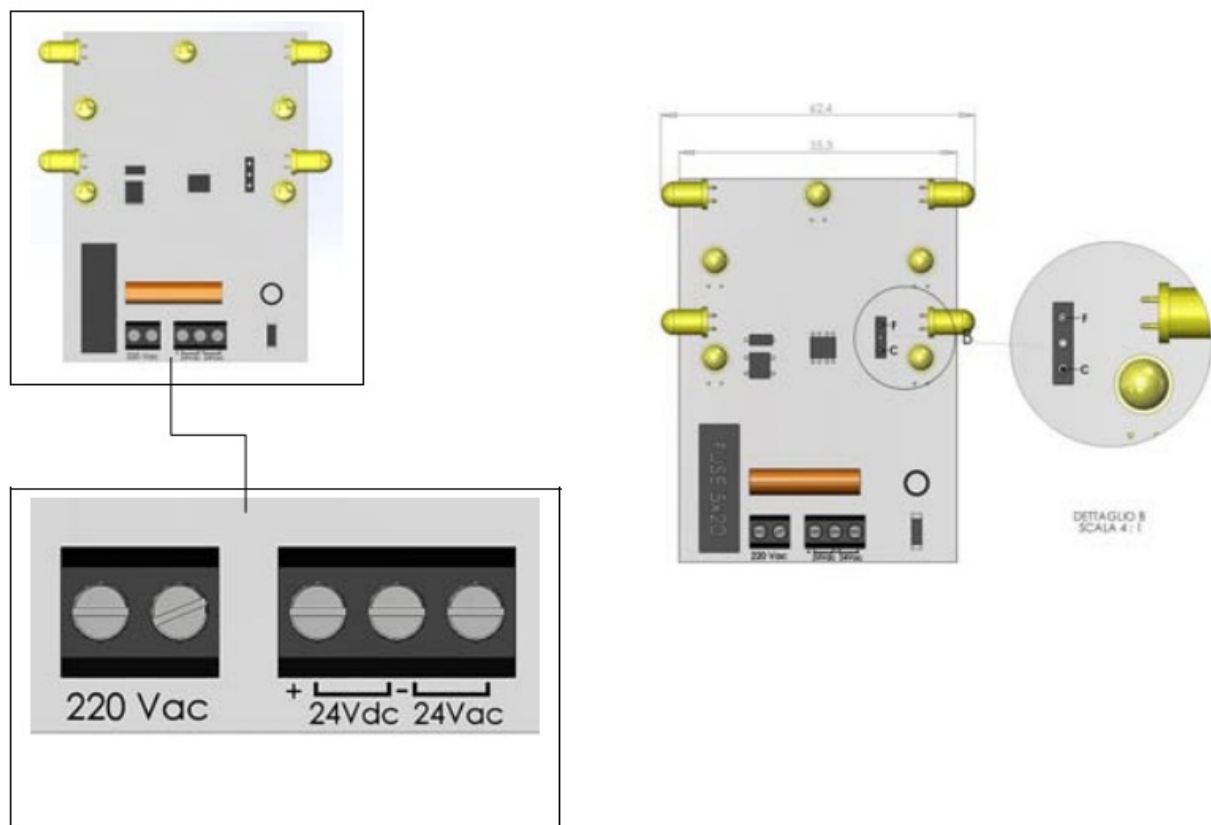
Dim. Lamp. L78xH97xP36
Dim. Base L50xH25xP48



TECHNICAL SPECIFICATIONS

- Working with auto flash (2 Hz) or with externally driven flash (selectable with jumper)
- Power of the device by choosing the power supply terminal, it can be 24Vac, 24Vdc or 230Vac
- In-line fuse

DIAGRAM



- 220Vac 230 Vac power-supply
- 24 V dc Connection for 24V DC power-supply

- 24 V ac Connection for 24V AC power-supply
- J1 Insert the bridge for:
 - C = Flashing externally managed
 - F = Flashing automatically managed
- STO1
Bracket for wall or pole mount
- FUSE
1 A Fuse



Any connection to the board must be carried out by qualified people only after having disconnected the unit.

Mount the flashlight in a vertical position, dome upward and inserting the wires the provided holes.

FERPORT s.a.s. is not liable for damages due to incorrect connections and/or tampering of the receivers neither are such damages covered by guarantee



Via Chienti 6 - 20052 Monza (MI) Italy - Tel. 039-734095 - Fax 039-734951
internet: <http://www.ferport.it> e-mail: ferport@ferport.it

Via Chienti 6-20052 Monza, Italy – Tel. 039-734095 – Fax 039-734951

internet: <http://www.ferport.it>

e-mail: ferport@ferport.it

FAQ

What should I do if there is a power supply issue?

Check the power connections and ensure the correct voltage is supplied to the device. Verify the fuse is intact.

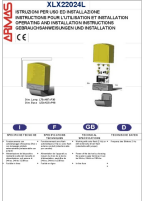
How can I change the flashing mode?

Use jumper J1 to switch between externally managed flashing (C) and automatically managed flashing (F).

Can I mount the device on a pole?

Yes, you can use the STO1 bracket for mounting on a pole or wall.

Documents / Resources

	<p>FERPORT XLX22024L ARMAS Externally Driven Flash [pdf] Installation Guide</p> <p>XLX22024L ARMAS Externally Driven Flash, XLX22024L, ARMAS Externally Driven Flash, Externally Driven Flash, Driven Flash, Flash</p>
--	--

References

- [User Manual](#)

FERPORT

ARMAS Externally Driven Flash, Driven Flash, Externally Driven Flash, FERPORT, Flash, XLX22024L, XLX22024L ARMAS Externally Driven Flash

Leave a comment

Your email address will not be published. Required fields are marked *

Comment *

Name

Email

Website

☐ Save my name, email, and website in this browser for the next time I comment.

Post Comment

Search:

e.g. whirlpool wrf535swhz

Search

[Manuals+](#) | [Upload](#) | [Deep Search](#) | [Privacy Policy](#) | [@manuals.plus](#) | [YouTube](#)

This website is an independent publication and is neither affiliated with nor endorsed by any of the trademark owners. The "Bluetooth®" word mark and logos are registered trademarks owned by Bluetooth SIG, Inc. The "Wi-Fi®" word mark and logos are registered trademarks owned by the Wi-Fi Alliance. Any use of these marks on this website does not imply any affiliation with or endorsement.