



# FERM PSM1029P Random Orbit Sander User Manual

[Home](#) » [FERM](#) » FERM PSM1029P Random Orbit Sander User Manual 

## Contents

- 1 FERM PSM1029P Random Orbit Sander
- 2 SAFETY WARNINGS
- 3 Technical data
- 4 DESCRIPTION
- 5 ASSEMBLY
- 6 USE
- 7 CLEANING AND MAINTENANCE
- 8 ENVIRONMENT
- 9 Spare parts list
- 10 DECLARATION OF CONFORMITY
- 11 Documents / Resources
  - 11.1 References
- 12 Related Posts



**FERM PSM1029P Random Orbit Sander**



Thank you for buying this Ferm product.

By doing so you now have an excellent product, delivered by one of Europe's leading suppliers. All products delivered to you by Ferm are manufactured according to the highest standards of performance and safety. As part of our philosophy we also provide an excellent customer service, backed by our comprehensive warranty. We hope you will enjoy using this product for many years to come.

## SAFETY WARNINGS

### WARNING

Read the enclosed safety warnings, the additional safety warnings and the instructions. Failure to follow the safety warnings and the instructions may result in electric shock, fire and/or serious injury. Keep the safety warnings and the instructions for future reference.

**The following symbols are used in the user manual or on the product:**



Read the user manual.



Risk of personal injury.



Risk of electric shock.



Immediately remove the mains plug from the mains if the mains cable becomes damaged and during cleaning and maintenance.



Wear safety goggles. Wear hearing protection.



Wear a dust mask.



Double insulated.



Do not dispose of the product in unsuitable containers.

### **ADDITIONAL SAFETY WARNINGS FOR FINISHING SANDERS**

Contact with or inhalation of dust coming free during use (e.g. lead-painted surfaces, wood and metal) can endanger your health and the health of bystanders. Always wear appropriate protective equipment, such as a dust mask. Always use proper dust extraction during use.

- Do not work materials containing asbestos. Asbestos is considered carcinogenic.
- Do not use the machine for sanding magnesium workpieces.
- Wear safety goggles, hearing protection and if necessary other protective means, such as safety gloves, safety shoes, etc.
- Be very careful when sanding painted surfaces.
- Before use, remove all nails and other metal objects from the workpiece.
- Make sure that the workpiece is properly supported or fixed.
- Only use sanding paper that is suitable for use with the machine.
- Only use sanding paper with the correct dimensions. Make sure that the sanding paper is properly mounted.
- Inspect the sanding paper before each use. Do not use sanding paper that is worn because of prolonged use.
- Never put the machine down on a table or a workbench before it has been switched off.

### **ELECTRICAL SAFETY**

Always check that the voltage of the power supply corresponds to the voltage on the rating plate.

- Do not use the machine if the mains cable or the mains plug is damaged.
- Only use extension cables that are suitable for the power rating of the machine with a minimum thickness of 1.5 mm<sup>2</sup>. If you use a extension cable reel, always fully unroll the cable.

### **Technical data**

Mains voltage 220-240 V~

Mains frequency 50 Hz

Power input 300W

No-load speed 13.000/min

Sanding surface 93 x 185 mm

Weight 1.86 kg

### **NOISE AND VIBRATION**

Sound pressure (L<sub>pa</sub>) 75.1 db(A) K=3dB

Acoustic power (L<sub>wa</sub>) 86.1 db(A) K=3dB

Vibration 4.184 m/s<sup>2</sup> K=1.5m/s<sup>2</sup>

### **Vibration level**

The vibration emission level stated in this instruction manual has been measured in accordance with a standardised test given in EN 60745; it may be used to compare one tool with another and as a preliminary

assessment of exposure to vibration when using the tool for the applications mentioned

- using the tool for different applications, or with different or poorly maintained accessories, may significantly increase the exposure level
- the times when the tool is switched off or when it is running but not actually doing the job, may significantly reduce the exposure level

Protect yourself against the effects of vibration by maintaining the tool and its accessories, keeping your hands warm, and organizing your work patterns

## DESCRIPTION

Your finishing sander has been designed for sanding wood, metal, plastics and painted surfaces.

1. On/off switch
2. Lock-on button
3. Sanding pad
4. Sanding paper clamp
5. Grip
6. Dustbag connection

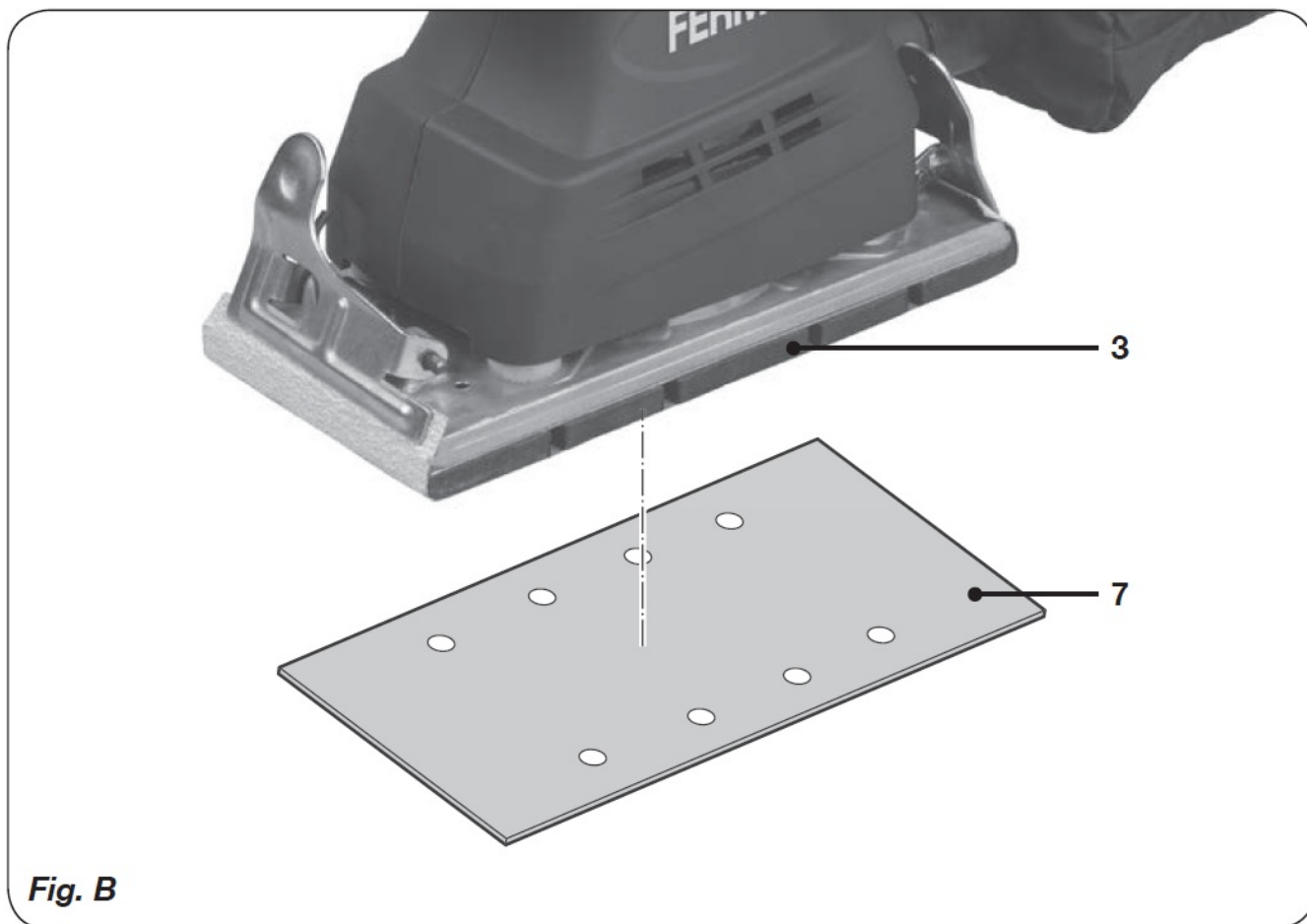


**Fig. A**

## ASSEMBLY

Before assembly, always switch off the machine and remove the mains plug from the mains.

Mounting and removing the sanding paper (Velcro® system) (fig. B)



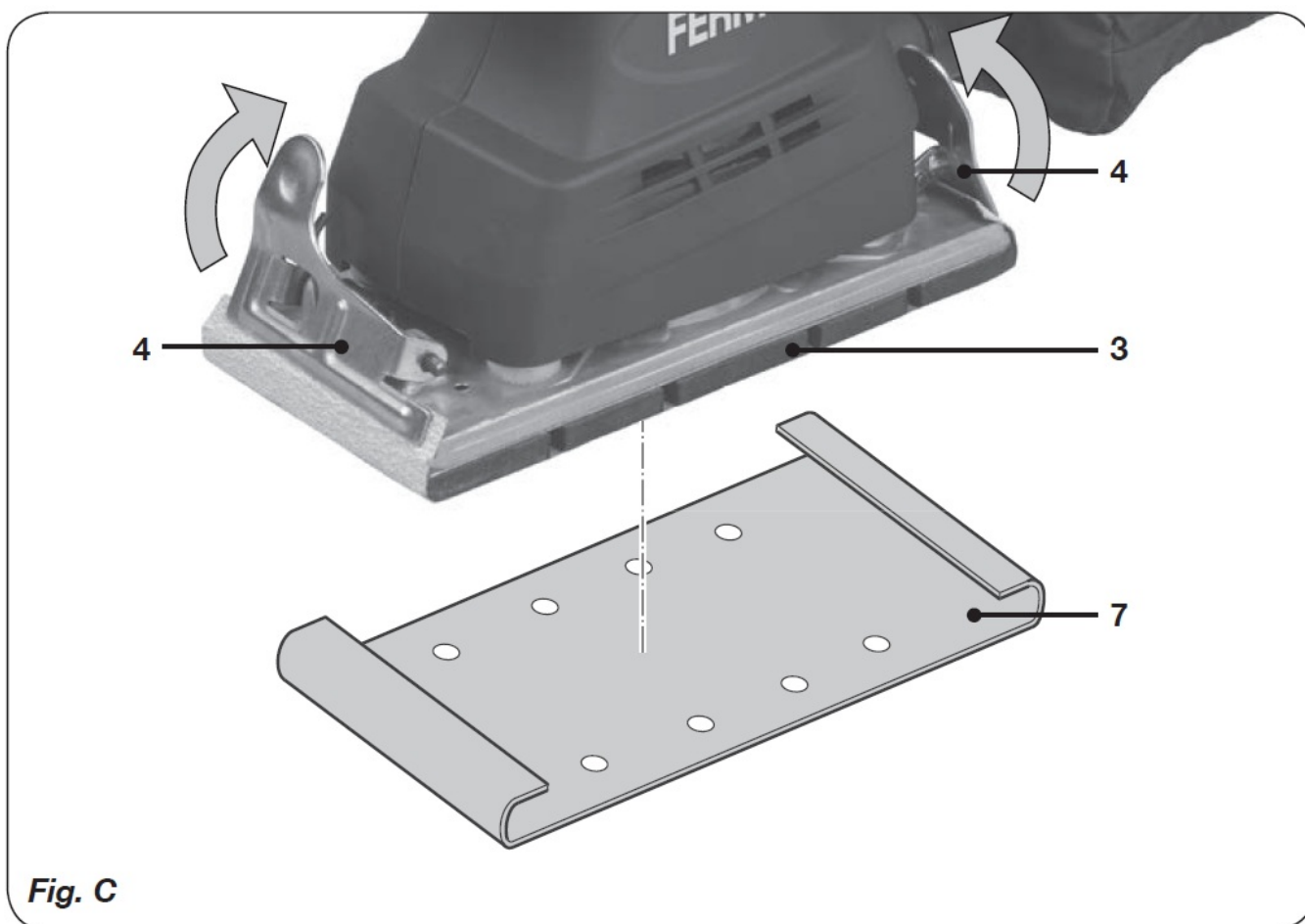
#### **Mounting**

Mount sanding paper (7) with the required grain size onto the sanding pad (3). Make sure that the perforation in the sanding paper (7) corresponds with the perforation on the sanding pad (3).

#### **Removing**

Remove the sanding paper (7) from the sanding pad (3).

**Mounting and removing the sanding paper (sanding paper clamps) (fig. C)**



**Fig. C**

## Mounting

- Open the sanding paper clamps (4).
- Mount sanding paper (7) with the required grain size onto the sanding pad (3). Make sure that the perforation in the sanding paper (7) corresponds with the perforation on the sanding pad (3).
- Fold the sanding paper (7) at both ends around the edges of the sanding pad (3).
- Close the sanding paper clamps (4) one by one. Make sure that the ends of the sanding paper (7) are clamped.

## Removing

- Open the sanding paper clamps (4).
- Remove the sanding paper (7) from the sanding pad (3).
- Close the sanding paper clamps (4).

## USE

### Switching on and off (fig. A)

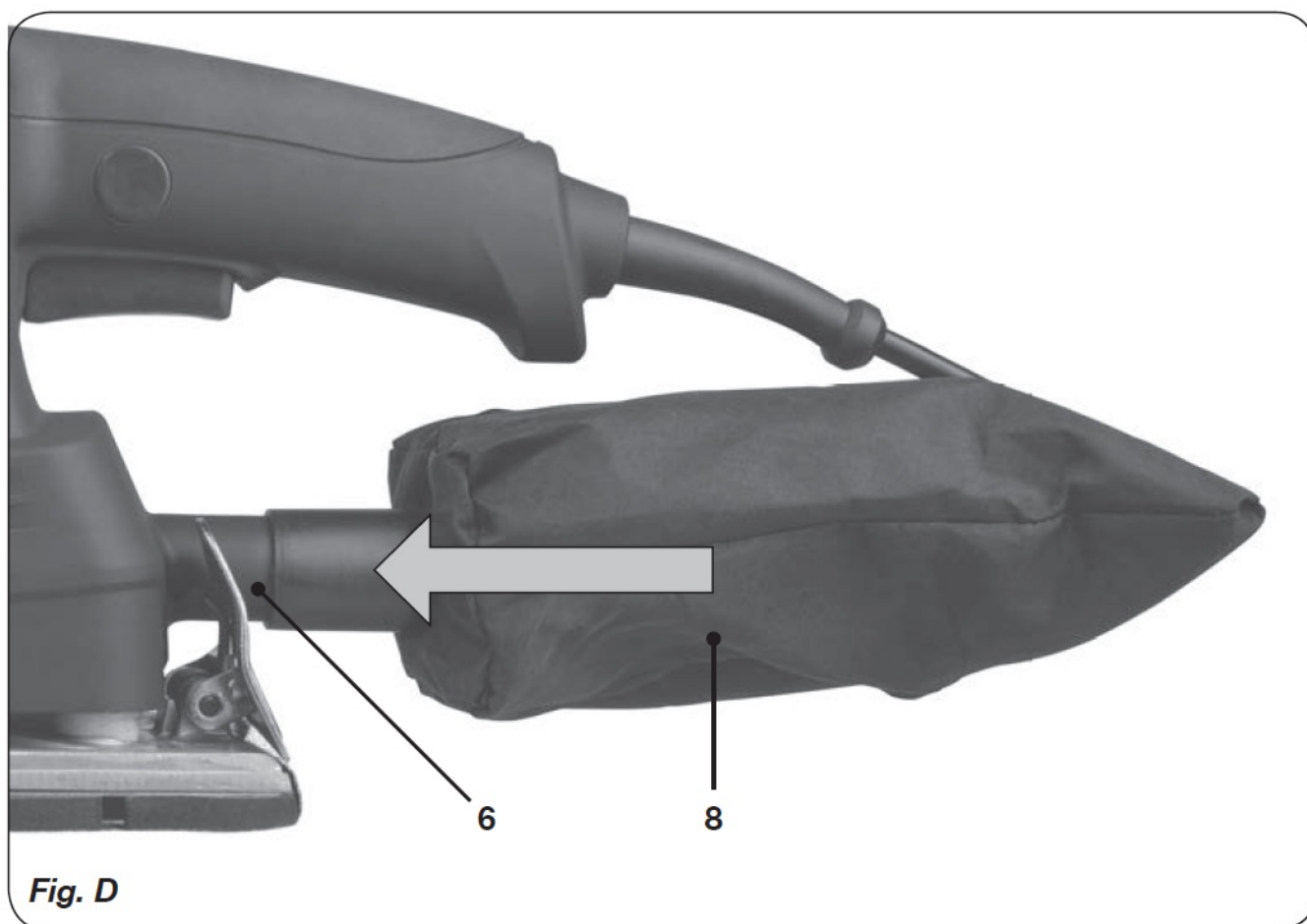
- To switch on the machine, press the on/off switch (1).
- To switch the machine to continuous mode, keep the on/off switch (1) pressed and simultaneously press the lock-on button (2).
- To switch off the machine, release the on/off switch (1).

## Switch-lock

- You can lock the On/Off switch by pressing the triggerswitch (1) and then pressing knob (2).
- Release the switch-lock by pressing the trigger switch (1) shortly.

## Dust extraction (fig. D)

Mount the dustbag (8) to the dustbag connection (6).



## Hints for optimum use

- Clamp the workpiece.
- Firmly hold the machine by the grip.
- Switch on the machine.
- Place the sanding pad with sanding paper on the workpiece.
- Slowly move the machine over the workpiece, firmly pressing the sanding pad against the workpiece.
- Do not apply too much pressure on the machine. Let the machine do the work.
- Switch off the machine and wait for the machine to come to a complete standstill before putting the machine down.

## CLEANING AND MAINTENANCE

Before cleaning and maintenance, always switch off the machine and remove the mains plug from the mains.

- Regularly clean the housing with a soft cloth.
- Keep the ventilation slots free from dust and dirt. If necessary, use a soft, moist cloth to remove dust and dirt from the ventilation slots.
- Regularly clean the sanding pad to avoid inaccuracies during use.

## WARRANTY

Consult the enclosed warranty terms.

## ENVIRONMENT



### Disposal

The product, the accessories, and the packaging must be sorted for environmentally friendly recycling.

### Only for EC countries

Do not dispose of power tools into domestic waste. According to the European Guideline 2012/19/EU for Waste Electrical and Electronic Equipment and its implementation into national right, power tools that are no longer usable must be collected separately and disposed of in an environmentally friendly way.

The product and the user manual are subject to change. Specifications can be changed without further notice.

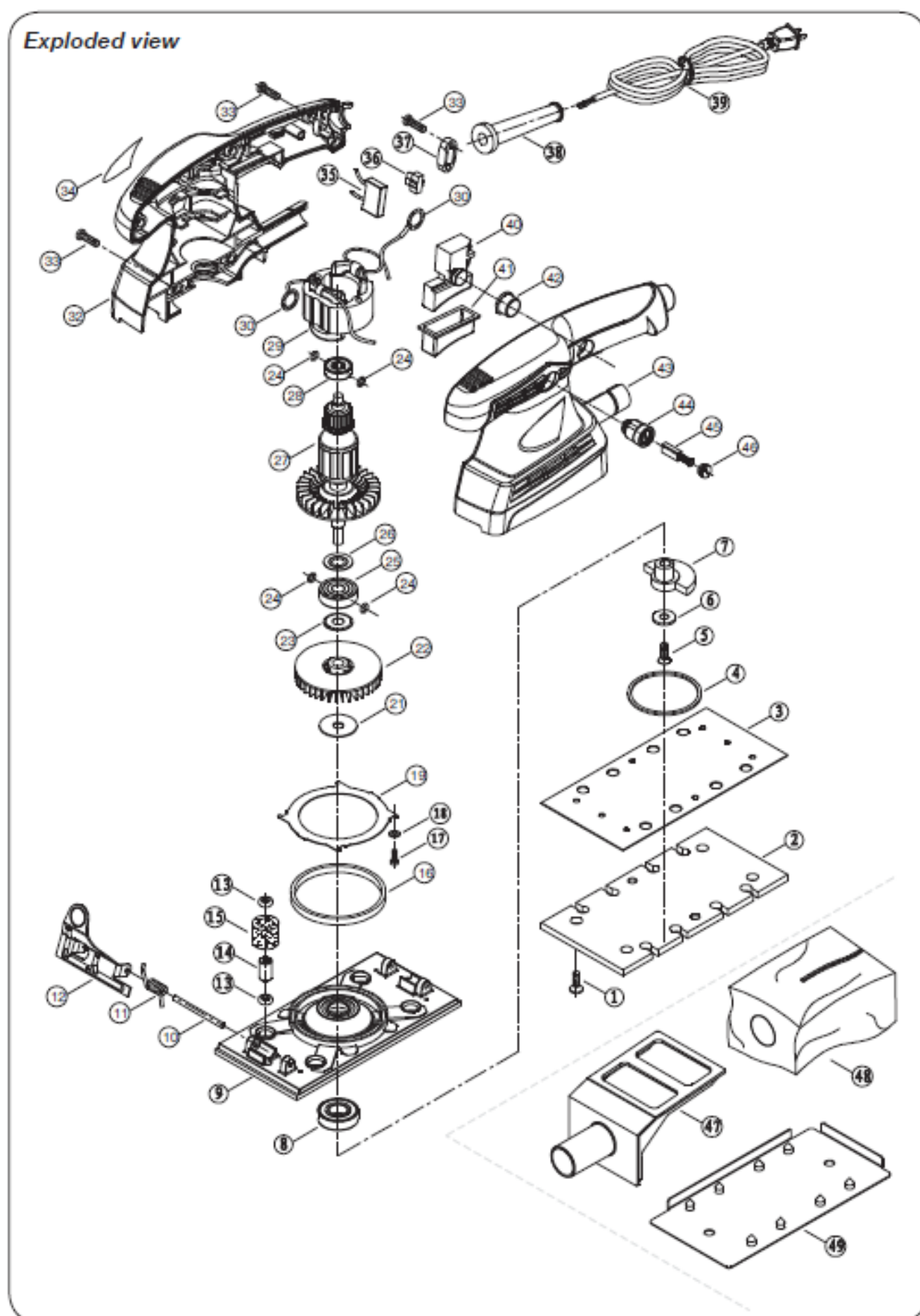
## Spare parts list

### PSM1029P

No.	Description	Position
128250	Base plate complete (with velcro)	2,3
128251	eccentric wheel	7
128252	Bearing 6002	8
128253	Aluminum bottom base	9
128254	Paper clamp + springs set complete	10, 11, 12
128255	Pilar set	13-15
128259	Bearing 6200	25
128260	Rotor (armature)	27
128261	Bearing 627	28
128263	Stator with tension springs	29,30
128263	Switch	40
128264	Swiych rubber set	41,42
128265	Carbon brush holder (2pcs) +cap (2pcs)	44,46
128266	Carbon brush set (2pcs)	45
128267	Dust bag + holder	47,48
128268	Punch plate	49




## Exploded view



DECLARATION OF CONFORMITY

We declare under our sole responsibility that this product is in conformity with directive 2011/65/EU of the European parliament and of the council of 8 June on the restriction of the use of certain hazardous substances in electrical and electronic equipment is in conformity and accordance with the following standards and regulations:

**Documents / Resources**

	<p><a href="#">FERM PSM1029P Random Orbit Sander</a> [pdf] User Manual</p> <p>PSM1029P Random Orbit Sander, PSM1029P, Random Orbit Sander, Orbit Sander</p>
---	---

**References**

-  [FERM Power Tools - Power to create](#)