



FERM JSM1028P Pendulum Action Jigsaw Instructions

[Home](#) » [FERM](#) » FERM JSM1028P Pendulum Action Jigsaw Instructions 

Contents

- 1 FERM JSM1028P Pendulum Action Jigsaw
- 2 SAFETY WARNINGS
 - 2.1 ELECTRICAL SAFETY
- 3 TECHNICAL DATA
- 4 DESCRIPTION
- 5 ASSEMBLY
- 6 USE
- 7 CLEANING AND MAINTENANCE
- 8 WARRANTY
- 9 Spare parts list
- 10 DECLARATION OF CONFORMITY
- 11 Documents / Resources
 - 11.1 References
- 12 Related Posts



FERM JSM1028P Pendulum Action Jigsaw



JIG SAW 450W

Thank you for buying this Ferm product. By doing so you now have an excellent product, delivered by one of Europe's leading suppliers. All products delivered to you by Ferm are manufactured according to the highest standards of performance and safety. As part of our philosophy, we also provide excellent customer service, backed by our comprehensive warranty. We hope you will enjoy using this product for many years to come.

SAFETY WARNINGS

WARNING

Read the enclosed safety warnings, the additional safety warnings and the instructions. Failure to follow the safety warnings and instructions may result in electric shock, fire and/or serious injury. Keep the safety warnings and the instructions for future reference.

The following symbols are used in the user manual or on the product:

- Read the user manual.
- Risk of personal injury.
- Risk of electric shock.
- Immediately remove the mains plug from the mains if the mains cable becomes damaged and during cleaning and maintenance.
- Wear safety goggles.
- Wear hearing protection.
- Wear a dust mask.
- Double insulated.
- Do not dispose of the product in unsuitable containers.
- The product is in accordance with the applicable safety standards in the European directives.

ADDITIONAL SAFETY WARNINGS FOR JIGSAWS

- Do not work materials containing asbestos. Asbestos is considered carcinogenic.

- Wear safety goggles, hearing protection and if necessary other protective means, such as safety gloves, safety shoes, etc.
- Before use, remove all nails and other metal objects from the workpiece.
- Make sure that the workpiece is properly supported or fixed.
- Do not use the machine without the guard.
- Inspect the saw blade before each use. Do not use saw blades that are bent, cracked, or otherwise damaged.
- Make sure that the saw blade is properly mounted.
- Only use saw blades that are suitable for use with the machine.
- Only use saw blades with the correct dimensions.
- Do not use other accessories than saw blades.
- Do not use saw blades made of HSS steel.
- Do not use the machine on workpieces requiring a maximum sawing depth that exceeds the maximum sawing depth of the saw blade.
- Hold the machine by the insulated gripping surfaces where the saw blade may contact hidden wiring or the main cable. If the saw blade contacts a 'live' wire, the exposed metal parts of the machine can also become 'live'. Risk of electric shock.
- Let the machine run at no load in a safe area after mounting the saw blade. If the machine vibrates strongly, immediately switch off the machine, remove the mains plug from the mains, and try to solve the problem.
- Beware that the saw blade continues to rotate for a short period after switching off the machine. Do not attempt to bring the saw blade to a standstill yourself.

Kickback

Kickback is the upward and backward movement of the saw blade when the saw blade unexpectedly touches an object. Securely hold the machine during use. Keep your attention focused on the operation.

Kickback is usually caused by:

- unintentionally touching hard objects or materials with the rotating saw blade;
- a blunt saw blade;
- a saw blade that is not properly mounted;
- sawing into a previous cut;
- a lack of attention to the operation;
- an instable stance.

ELECTRICAL SAFETY

Always check that the voltage of the power supply corresponds to the voltage on the rating plate.

- Do not use the machine if the mains cable or the mains plug is damaged.
- Only use extension cables that are suitable for the power rating of the machine with a minimum thickness of 1.5 mm². If you use an extension cable reel, always fully unroll the cable.

TECHNICAL DATA

- Mains voltage 220-240 V~

- Mains frequency 50 Hz
- Power input 450 W
- No-load speed 0-3.400/min
- Max. sawing depth (wood) 65mm
- Max. sawing stroke 6 mm
- Mitre angle +45° – -45°
- Number of pendulum positions 3+1
- Weight 2.05 kg

NOISE AND VIBRATION

- Sound pressure (Lpa) 97.7 dB(A) K=3 dB(A)
- Acoustic power (Lwa) 108.6 dB(A) K=3 dB(A)
- Vibration (wood) 11.015 m/s² K=1.5 m/s²
- Vibration (metal) 15.154 m/s² K=1.5 m/s²

Vibration level

The vibration emission level stated in this instruction manual has been measured in accordance with a standardized test given in EN 60745; it may be used to compare one tool with another and as a preliminary assessment of exposure to vibration when using the tool for the applications mentioned.

- using the tool for different applications, or with different or poorly maintained accessories, may significantly increase the exposure level
- the times when the tool is switched off or when it is running but not actually doing the job, may significantly reduce the exposure level

Protect yourself against the effects of vibration by maintaining the tool and its accessories, keeping your hands warm, and organizing your work patterns

DESCRIPTION

(FIG. A)

Your pendulum action jigsaw has been designed for sawing wood, metal, plastics, ceramics, rubber, etc. to any required size and in any required shape.

1. On/off switch
2. Lock-on button
3. Pendulum action switch
4. Guard
5. Saw blade holder
6. Saw shoe
7. Dust extraction connection
8. Grip
9. Allen key

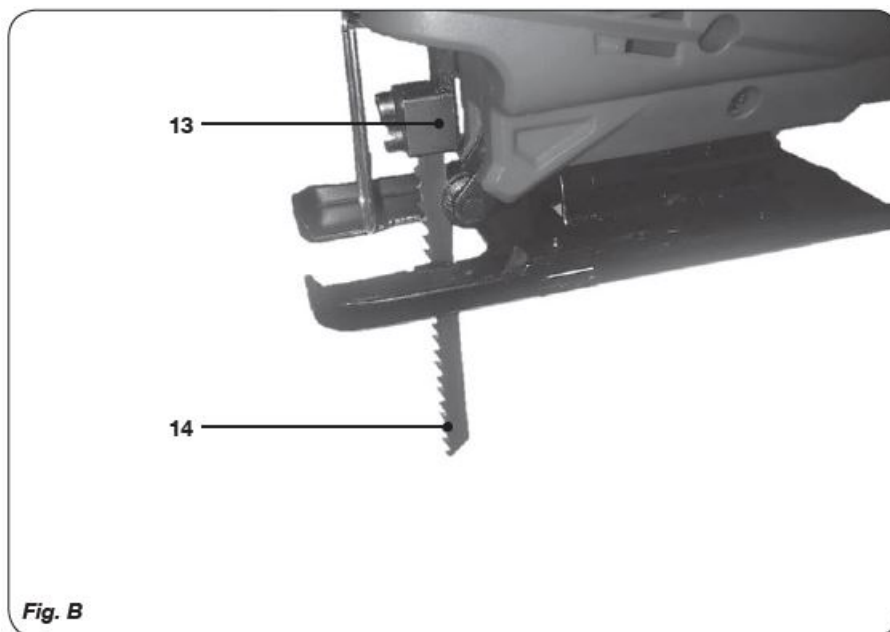


ASSEMBLY

Before assembly, always switch off the machine and remove the mains plug from the mains.

Mounting and removing the saw blade (fig. B)

Refer to the table below to select the required saw blade.



Mounting

- Slacken the Allen screws (13) using the Allen key (11).
- Insert the saw blade (14) in the saw blade holder (6) as far as possible. The teeth of the saw blade (14) must point upward and forward. The smooth side of the saw blade must engage in the slot of the guide roller.
- Tighten the Allen screws (13) using the Allen key (11).

Removing

- Slacken the Allen screws (13) using the Allen key (11).
- Remove the saw blade (14) from the saw blade holder (6).
- Tighten the Allen screws (13) using the Allen key (11).

Saw blade/Material

- Coarse Wood
- Medium Wood
- Fine Steel, aluminum, plastic
- Very fine Wood (curves)

Do not attempt to remove the guard from the machine.

USE

The On/Off switch (fig. A)

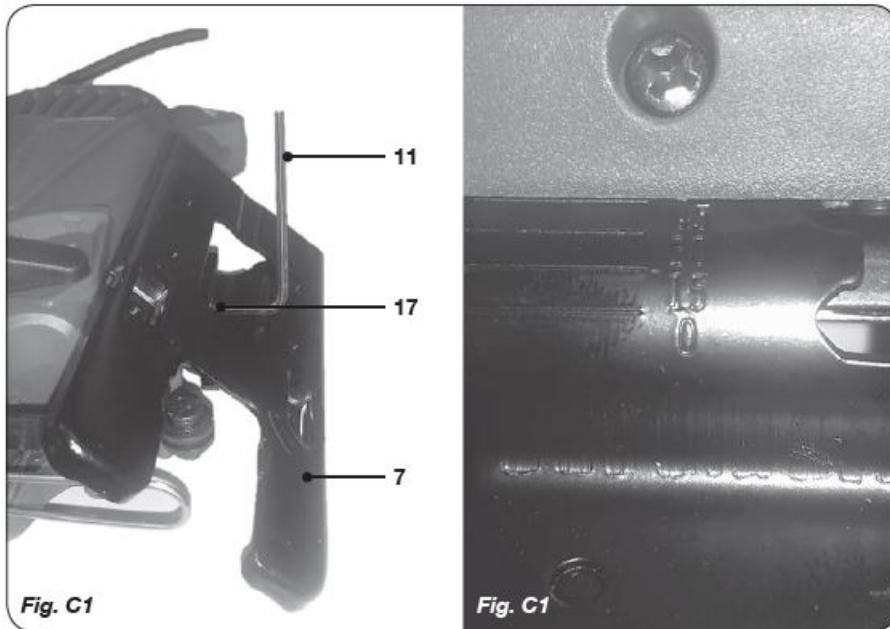
- Switch the machine on by pressing the On/Off switch (1). When you release the On/Off switch (1) the machine will turn off.
- The rotation speed can be adjusted by pressing the On/Off switch (1) harder for raising the rotation speed or releasing pressure for lowering the rotation speed.

Lock-on Button

- You can lock the On/Off switch (1) by pressing the On/Off switch (1) and then pressing the lock-on button (2).
- To release the switch-lock; shortly press the On/Off switch (1) again.

Setting the miter angle (fig. C)

The miter angle is variable between -45° and $+45^{\circ}$.



Do not set the miter angle during use.

- Slacken the Allen screws (17) using the Allen key (11).
- Tilt the saw shoe (7) to the required position.
- Tighten the Allen screws (17) using the Allen key (11).

Using the pendulum action switch (fig. A)

The pendulum action switch is used to set the way in which the teeth of the saw blade grip the material. The pendulum action switch can be set to 4 positions.

Do not set the pendulum position during use.

- Turn the pendulum action switch (2) to the required position according to the material to be worked. Refer to the table below to select the required position.

Material/Pendulum position

- Wood 1-3
- Plastics 1
- Aluminum 0-1
- Steel 0
- Ceramics 0
- Rubber 0

Dust extraction

Connect the hose of a vacuum cleaner to the dust extraction adapter (9).

Hints for optimum use

- Clamp the workpiece. Use a clamping device for small workpieces.
- Draw a line to define the direction in which to guide the saw blade.
- Firmly hold the machine by the grip.
- Set the sawing speed.
- Set the mitre angle.
- Set the pendulum position.
- Switch on the machine.
- Wait until the machine has reached full speed.
- Place the saw shoe on the workpiece.
- Slowly move the machine along the pre-drawn line, firmly pressing the saw shoe against the workpiece.
- Do not apply too much pressure on the machine. Let the machine do the work.
- Switch off the machine and wait for the machine to come to a complete standstill before putting the machine down.

CLEANING AND MAINTENANCE

Before cleaning and maintenance, always switch off the machine and remove the mains plug from the mains.

- Regularly clean the housing with a soft cloth.
- Keep the ventilation slots free from dust and dirt. If necessary, use a soft, moist cloth to remove dust and dirt from the ventilation slots.
- Regularly clean the saw blade to avoid inaccuracies during use.
- Regularly lubricate the guide roller.

WARRANTY

Consult the enclosed warranty terms.

ENVIRONMENT

Disposal

The product, the accessories, and the packaging must be sorted for environmentally friendly recycling.

Only EC countries

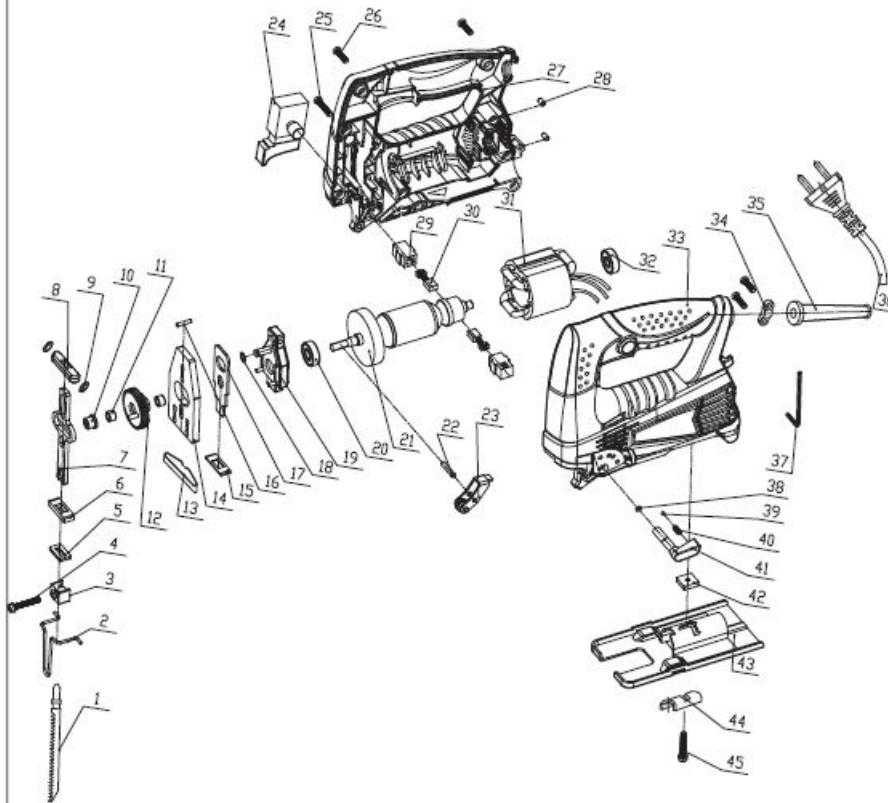
Do not dispose of power tools into domestic waste. According to the European Guideline 2012/19/EU for Waste Electrical and Electronic Equipment and its implementation into national right, power tools that are no longer usable must be collected separately and disposed of in an environmentally friendly way.

Spare parts list

JSM1028P

No.	Description	Position
480217	Saw holder complete	3..9
480218	Big gear	12
480219	Front rotor bearing 608	20
480220	Rotor	21
480221	Saw guide	22, 23
480222	Switch	24
480223	brush holder	29
480224	carbon brush	30
480225	stator	31
480226	Rear rotor bearing 627	32
480227	Function knob complete	38..41
480228	base complete	42..45

Exploded view



DECLARATION OF CONFORMITY

We declare under our sole responsibility that this product is in conformity with directive 2011/65/EU of the European Parliament and of the Council of 8 June on the restriction of the use of certain hazardous substances in electrical and electronic equipment is in conformity and accordance with the following standards and regulations:

EN 55014-1, EN 55014-2, EN 62841-1, EN 62841-2-4, 2006/42/EC, 2014/30/EU, 2012/19/EU, 2011/65/EU.


Zwolle, 01-06-2021

H.G.F Rosberg
CEO FERM

FERM – Lingenstraat 6 – 8028 PM – Zwolle – The Netherlands.

WWW.FERM.COM.

Documents / Resources

	<p>FERM JSM1028P Pendulum Action Jigsaw [pdf] Instructions</p> <p>JSM1028P, Pendulum Action Jigsaw, JSM1028P Pendulum Action Jigsaw, Action Jigsaw, Jigsaw</p>
---	--

References

- [FERM Power Tools - Power to create](#)