



FENIX APEX 20 Flashlight Instructions

[Home](#) » [FENIX](#) » FENIX APEX 20 Flashlight Instructions 

FENIX APEX 20 Flashlight Instructions



FENIX APEX 20

FENIX 20TH ANNIVERSARY
LIMITED EDITION FLASHLIGHT



760 LUMENS MAXIMUM
OUTPUT



86 METERS MAXIMUM
BEAM DISTANCE

Contents

- [1 FENIX APEX 20 FLASHLIGHT](#)
- [2 OPERATING INSTRUCTION](#)
- [3 CHARGING](#)
- [4 TECHNICAL PARAMETERS](#)
- [5 BATTERY LEVEL INDICATION](#)
- [6 INTELLIGENT OVERHEAT PROTECTION](#)
- [7 LOW-VOLTAGE WARNING](#)
- [8 USAGE AND MAINTENANCE](#)
- [9 INCLUDED](#)
- [10 Documents / Resources](#)
- [11 Related Posts](#)

- 760 lumens maximum output, 86 meters maximum beam distance.
- Uses a Cree XP-L HI V2 white light LED and a Cree XO-E red light LED, with a lifespan of 50,000 hours.
- Built-in 500mAh Li-polymer battery.
- White and red light sources.
- USB Type-C charging port.
- Dual-way operation with the side round rotating switch.
- Boot-up battery level indication and low-voltage warning.
- Made of TC4 titanium alloy.
- Size: 2.77" x 1.12" x 0.54" / 70.4 x 28.5 x 13.7 mm.
- Weight: 2.15 oz /61 g.

OPERATING INSTRUCTION

On/off

Rotate the side switch forwards or backwards to turn on the flashlight, rotate it again in opposite direction to turn off the light.

Mode switching

With the light switched off, rapidly rotate the switch forwards to enter white light mode, rotate the switch backwards to turn off the light. After the light is being switched over 0.6 seconds, rapidly rotate the switch backwards to enter red light mode, rotate the switch forwards to turn off the light.

Note: It is needed to constantly rotate the switch to turn on the light for preventing accidental activation.

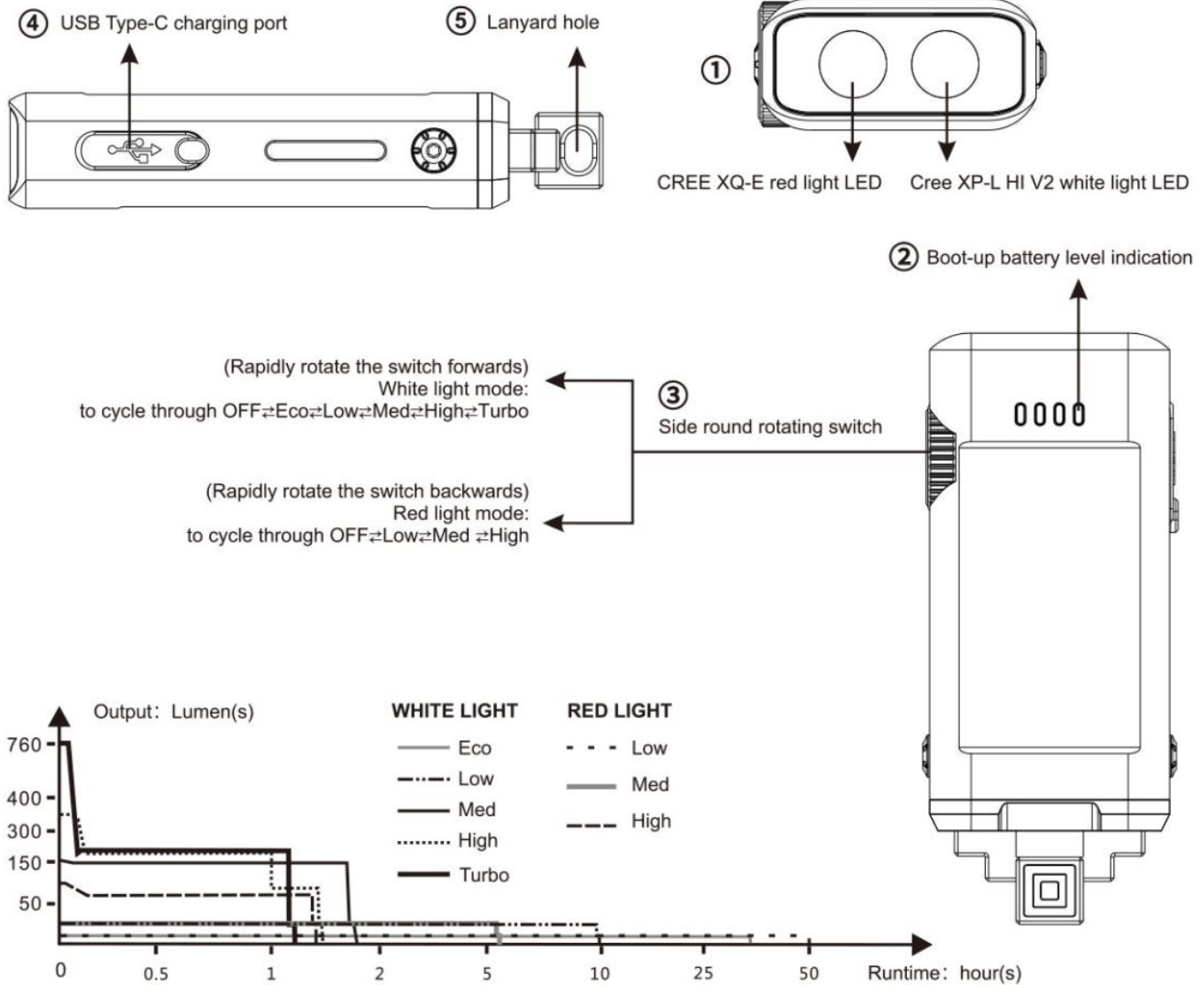
Output Selection

White light mode: Rapidly rotate the switch forwards to cycle through OFF ⇌ Eco ⇌ Low ⇌ Med ⇌ High ⇌ Turbo.

Red light mode: Rapidly rotate the switch backwards to cycle through OFF ⇌ Low ⇌ Med ⇌ High.

CHARGING

1. First switch off the light and reveal the USB Type-C charging port and plug the USB A socket of the charging cable into an electrical outlet, then connect the USB Type-C socket of the charging cable to the light.
2. The indicators will display in turn while charging and will be constant on when fully charged.
3. Once charging is completed, be sure to replace the anti-dust cap to maintain the dustproof and waterproof ability.



TECHNICAL PARAMETERS

ANSI/PLATO FL1	WHITE LIGHT					RED LIGHT		
	Turbo	High	Med	Low	Eco	High	Med	Low
OUTPUT	760 lumens	350 lumens	150 lumens	30 lumens	5 lumens	100 lumens	30 lumens	1 lumen
RUNTIME	1 hour 10 minutes*	1 hour 25 minutes	1 hour 40 minutes	10 hours	35 hours	1 hour 20 minutes	5 hours 15 minutes	50 hours
DISTANCE	86 meters	53 meters	36 meters	16 meters	7 meters	25 meters	15 meters	/
INTENSITY	1860 candela	700 candela	320 candela	65 candela	13 candela	160 candela	55 candela	/
IMPACT RESISTANCE	1 meter							
WATER RESISTANT	IP66							

⚠ **Note:** According to the ANSI/PLATO FL 1 standard, the above specification are from the results produced by Fenix through its laboratory testing using the built-in 500mAh Li-polymer battery under the temperature of 21±3°C and humidity of 50% – 80%. The true performance of this product may vary according to different working environments and the actual battery used.

The Turbo output is measured in a total of runtime including output at reduced levels due to temperature or protection mechanism in the design.

Note:

1. The normal charging time is approximately 2 hours from depletion to full charging.
2. Recharge a stored light every four months to maintain the optimum performance of the battery.
3. Low mode of white light and red light modes are both available while charging, but the charging time will be prolonged.

BATTERY LEVEL INDICATION

With the light switched off, rotate the switch, the indicators will indicate the battery level and will last for 3 seconds.

Four blue lights on: saturated 100% – 80%

Three blue lights on: sufficient 80% -60%

Two blue lights on: relatively sufficient 60% – 40%

One blue light on: poor 40% – 20%

One blue light flashes: critical 20% – 1 %

INTELLIGENT OVERHEAT PROTECTION

The light will accumulate a lot of heat when used at relatively high modes for extended periods. When the light reaches a temperature of 60°C or above, the light will automatically step down a few lumens to reduce the temperature. When the temperature drops below 60°C, it will then allow the user to reselect the modes.

LOW-VOLTAGE WARNING

When the voltage level drops below the preset level, the flashlight is programmed to downshift to a lower brightness level until Low output is reached. When this happens in Low output, one battery level indicator constantly blinks blue to remind you to recharge the battery.

USAGE AND MAINTENANCE

- Disassembling the sealed head can cause damage to the light and will void the warranty.
- Any problem encountered during use, please contact your authorized distributor.

INCLUDED

Fenix APEX 20 Flashlight, USB Type-C charging cable, Key chain, Neck lanyard, User manual, Warranty card

⚠ WARNING

- The flashlight is a high-intensity lighting device capable of causing eye damage to the user or others. Avoid shining the light directly into anyone's eyes.
- This flashlight will accumulate a lot of heat when used for extended periods, resulting in a high temperature of the flashlight shell. Pay attention to safe use to avoid scalding.
- Do not shine an object at close range, to avoid burning the object or causing danger due to high temperature.
- The LEO of this flashlight is not replaceable; so the entire light should be replaced when the LED reaches the end of its life.
- If any of the information provided in this manual is changed, the new version of the manual shall prevail; if your

included user manual is an old one, ii acquiesces that we won't send a new manual.

LIGHTING FOR EXTREMES



FACEBOOK WECHAT

"Follow" us for more information about Fenix.

FENIXLIGHT LIMITED

Tel: +86-755-29631163/83/93 Fax: +86-755-29631181
E-mail: info@fenixlight.com Web: www.fenixlight.com
Address: 2F/3F, West of Building A, Xinghong Technology
Park, 111 Shuiku Road, Fenghuanggang Community,
Xixiang Street, Bao'an District, Shenzhen City, Guangdong
Province, China

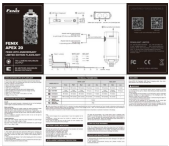


61.149.221.039-A1-20210902

<https://www.facebook.com/fenixproducts/>
http://weixin.qq.com/r/83U_JiHEP3xArWVF9yDh

info@fenixlight.com
www.fenixlight.com

Documents / Resources



[FENIX APEX 20 Flashlight](#) [pdf] Instructions

APEX 20 Flashlight, APEX 20, Flashlight