

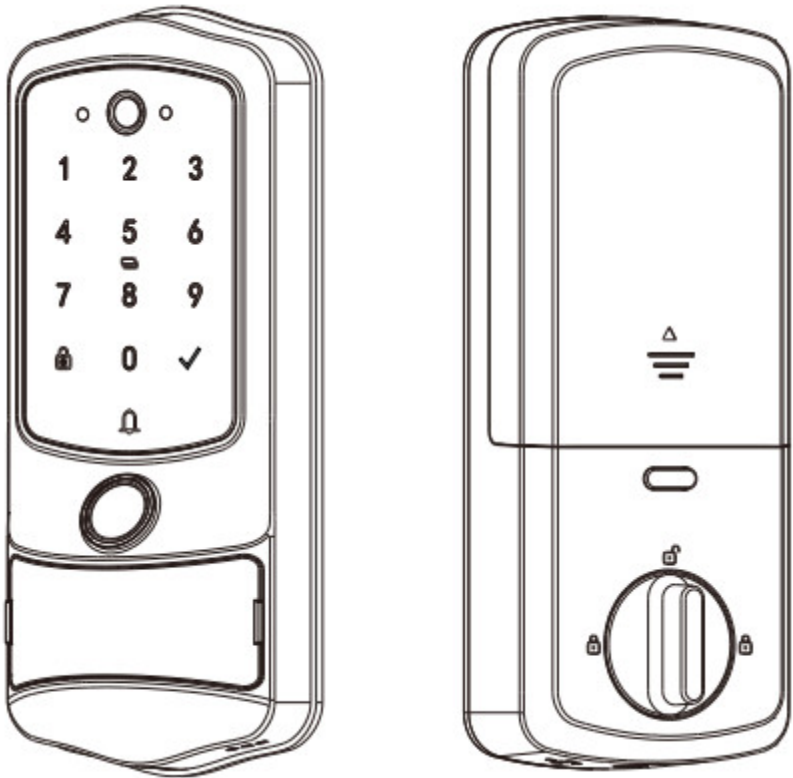


FENDA H1 C20 Smart Deadbolt Lock User Guide

[Home](#) » [FENDA](#) » FENDA H1 C20 Smart Deadbolt Lock User Guide 



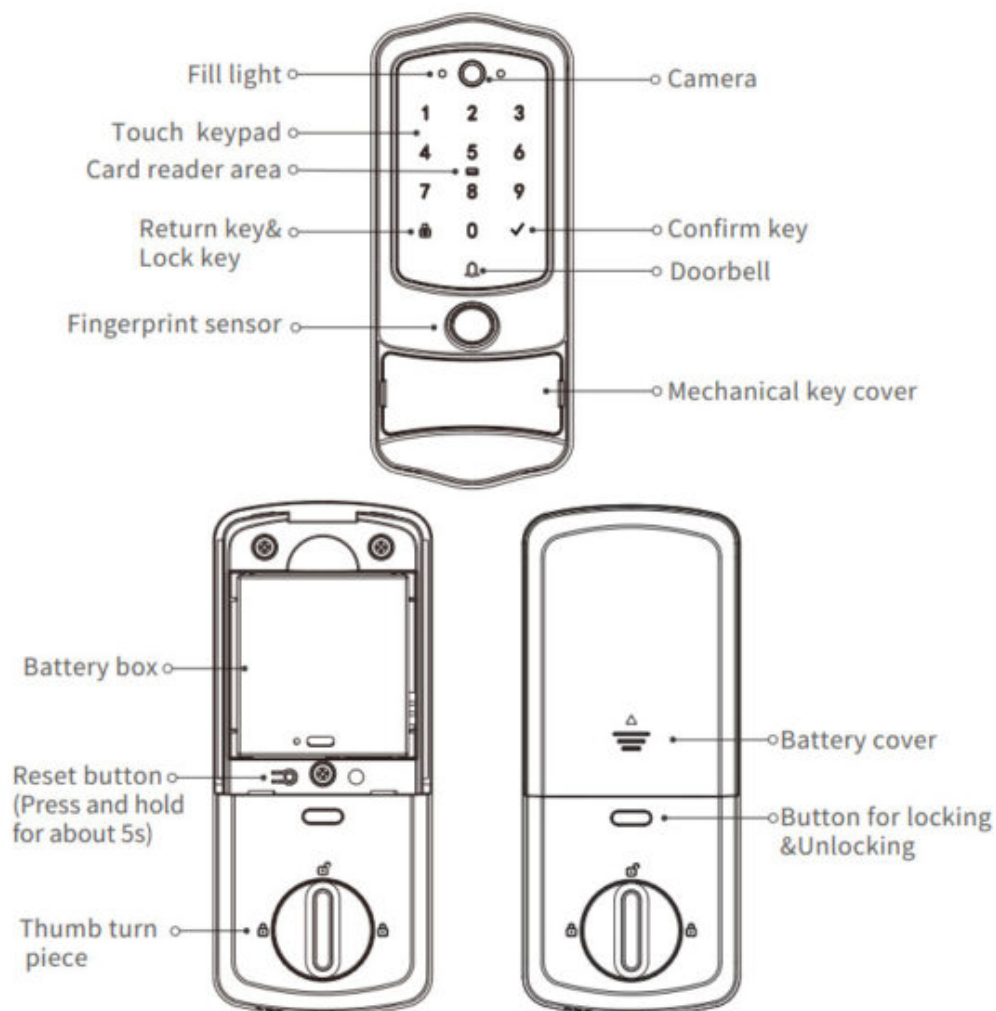
Smart deadbolt lock



Contents

- 1 Product Overview
- 2 Product Specifications
- 3 Product Specifications
- 4 Installation Requirements
- 5 Installation Requirements
- 6 Lock Configuration
- 7 FAQ
- 8 CAUTION
- 9 FCC Statement
- 10 Documents / Resources
 - 10.1 References

Product Overview



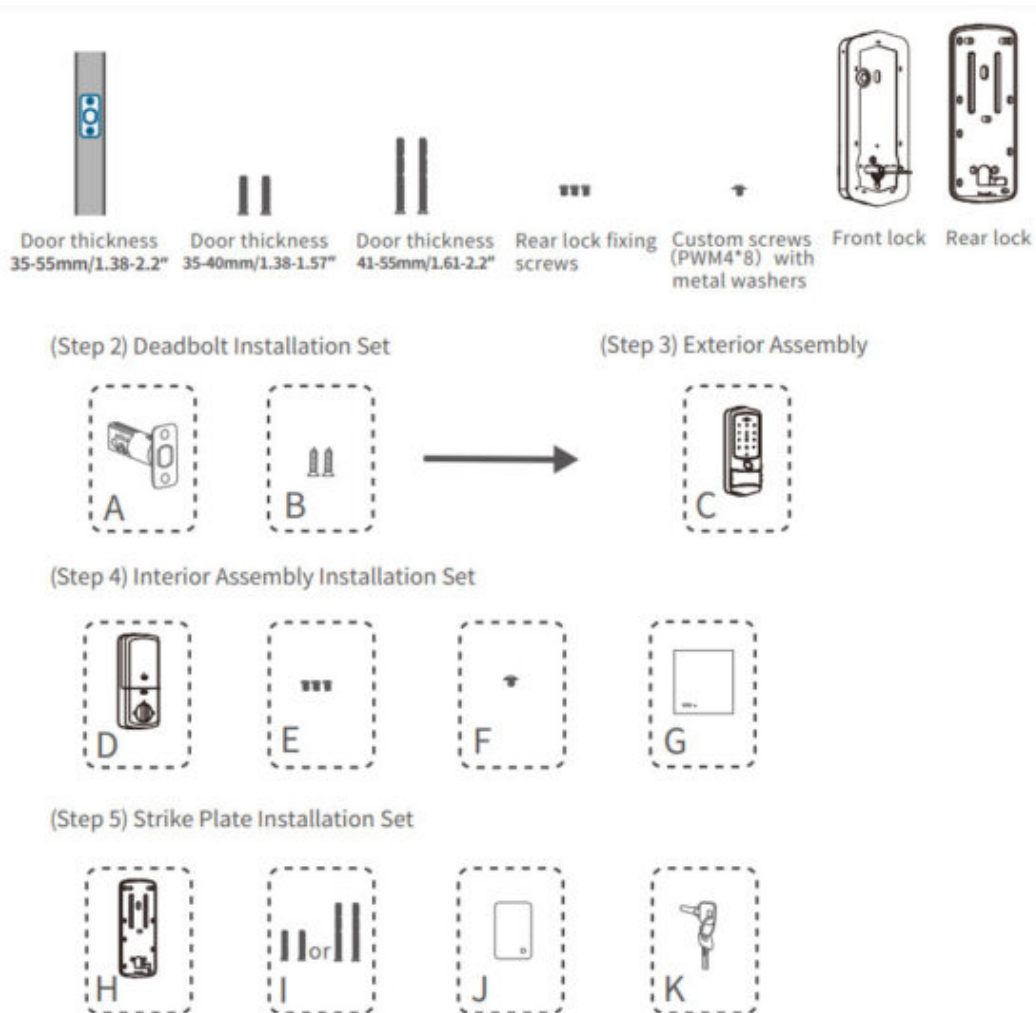
Product Specifications

Product Name	Smart deadbolt lock
Model	H1 C20
Working Voltage	7.4V
Master	10 groups
Fingerprints	50
Cards	100
PIN Codes	100
PIN Code	6-8 digits
Vitural PIN Code	20 digits
Working Temp (Front lock only)	– 10°C–66°C

Product Specifications

No.	Qty	Remarks
Front panel	1	
Back panel	1	Incel.back sealing plate
Strike plates	1	
Cards	2	
Emergency key	2	
User manual	1	
Battery	1	2800mAh

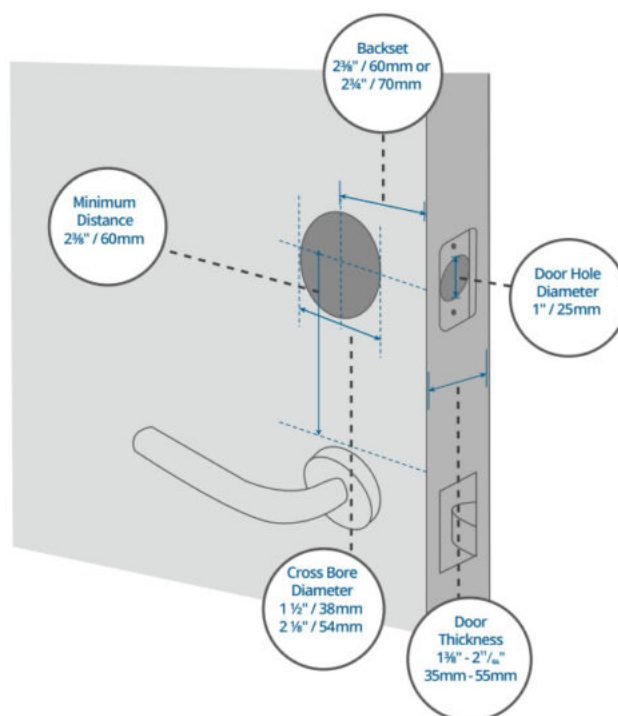
Installation Requirements



Step 1. Prepare the Door

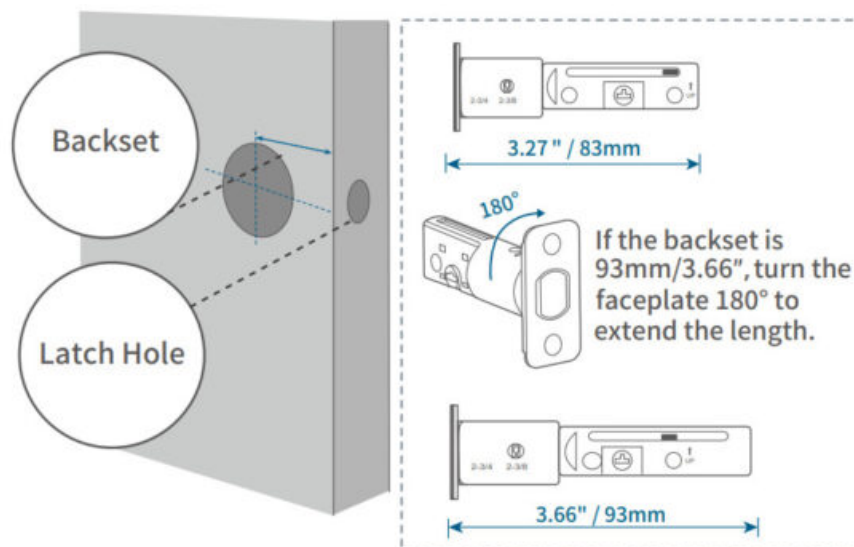
1. Remove the existing lock and check your door.
2. Check if your door has holes like the one below. Standard US doors are already compatible.

If not, follow the template to drill holes on your door.

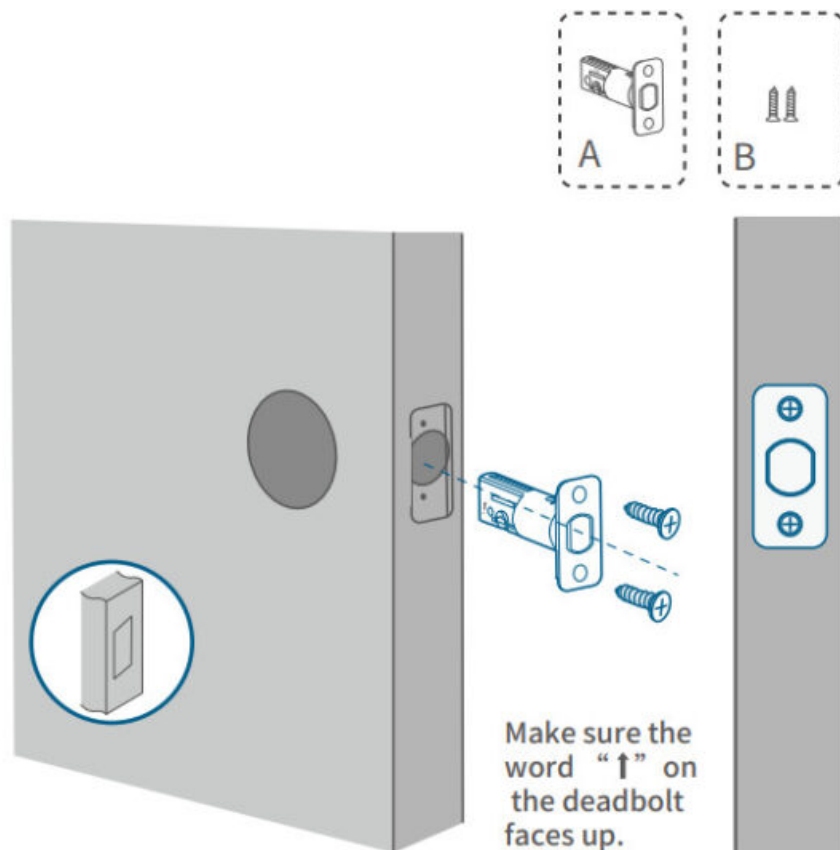


Step 2. Install Deadbolt

1. Check your door to see if the deadbolt requires adjustment.
- 2.

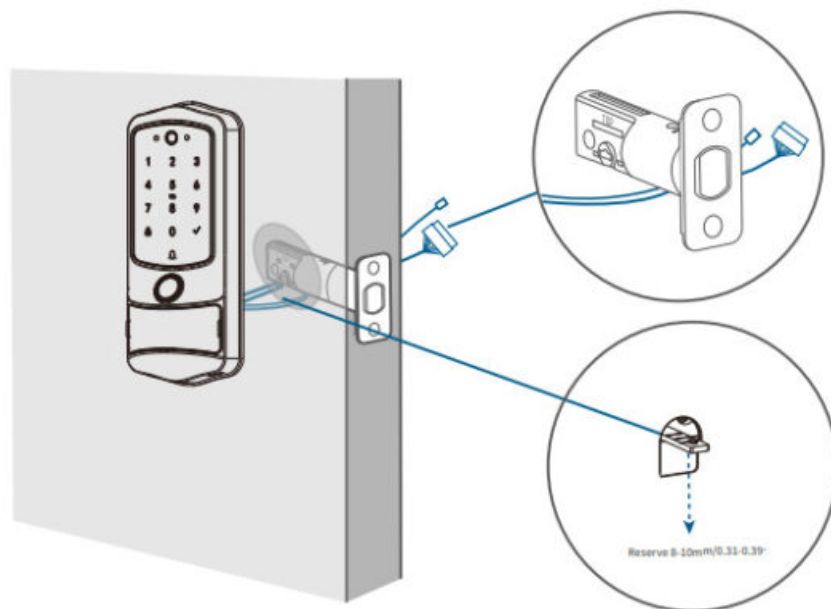


Insert and screw the deadbolt into the doorframe.



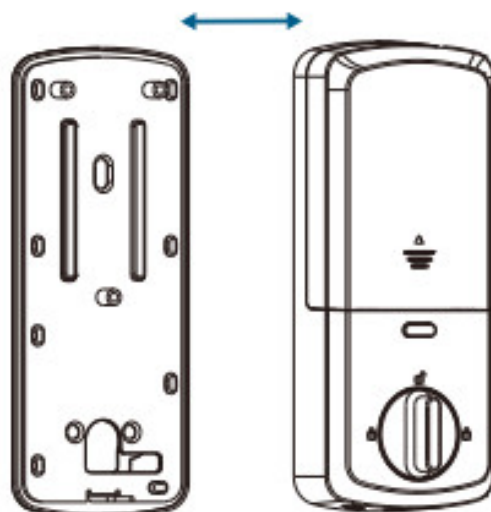
Step 3. Install Exterior Assembly

- Remove the spacer before installation if you have a 38mm/1.5" cross bore.
- Take out the front lock panel and pass it through the lock body, leaving it 8-10mm/0.31-0.39" beyond the rear lock base plate, and cut off the excess part with cutting pliers.



Step 4. Install Interior Assembly

1. Detach the back cover from the interior assembly.

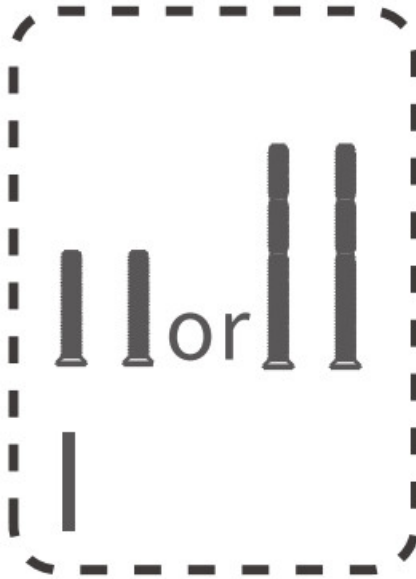


2. Run the wires through the back cover.

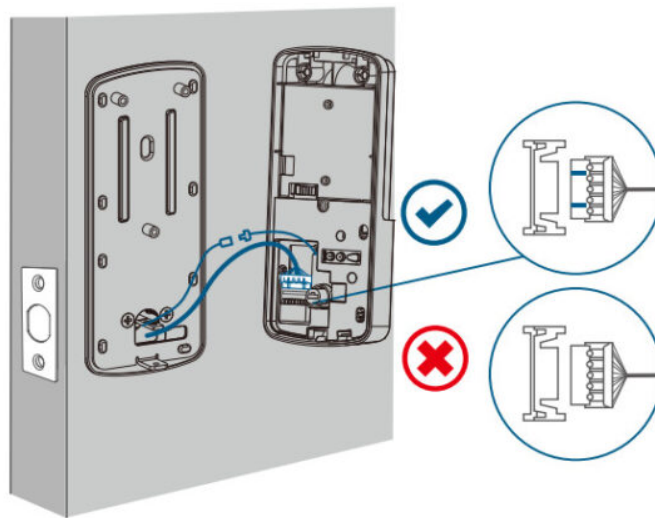


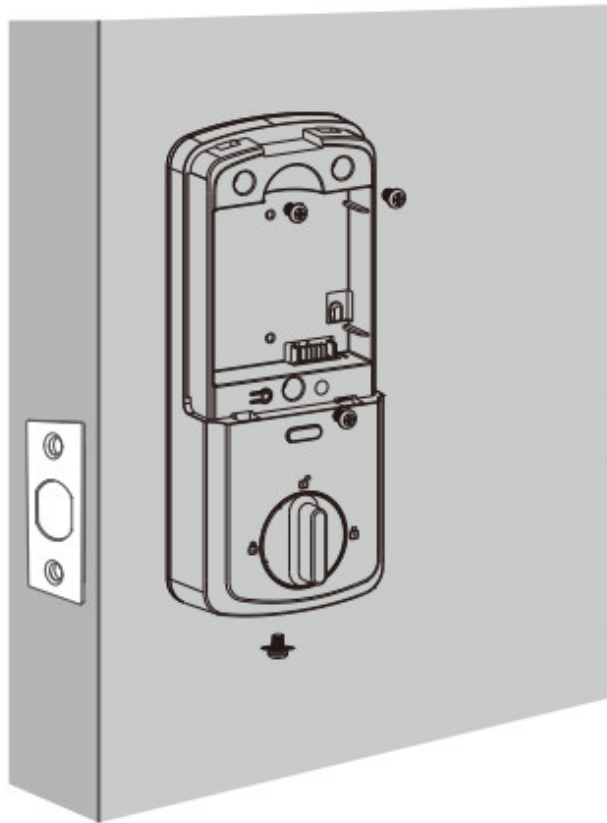
Tightly fasten the screws in place. Set the screws with your hands, then use a screwdriver to secure them.

3.

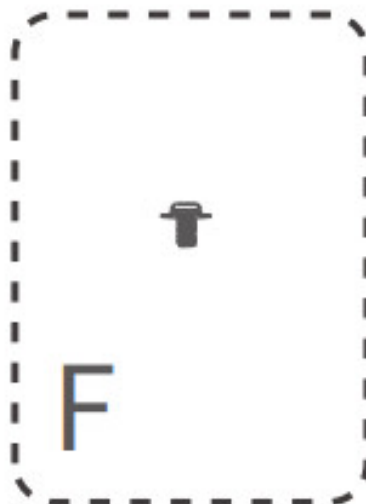


Wire to the interior assembly.



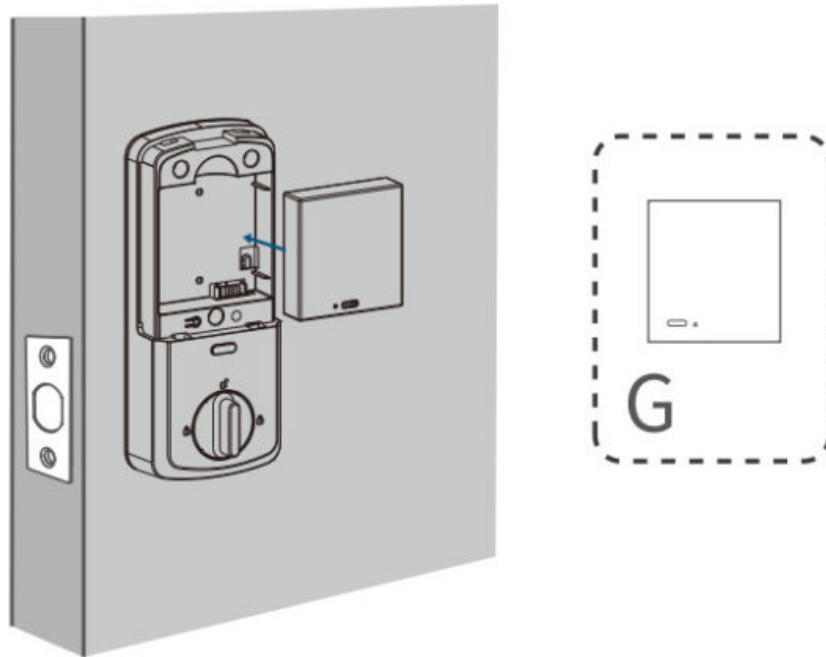


Make sure the deadbolt is retracted and the thumb turn knob is on the “unlock” position, check if the deadbolt moves properly by turning the thumbturn.



4. Install the 2800mAh lithium battery provided with the correct polarity. Don't put on the cover until the system

setup is done in the app.



5. The left and right doors are different Set the door opening direction. The factory mode of the lock defaults to the right. Go to the door lock after installation. Change the direction of the setting according to the door opening. Refer to the “Lock Configuration” section.

Left-handed door

Right-handed door



Outside View

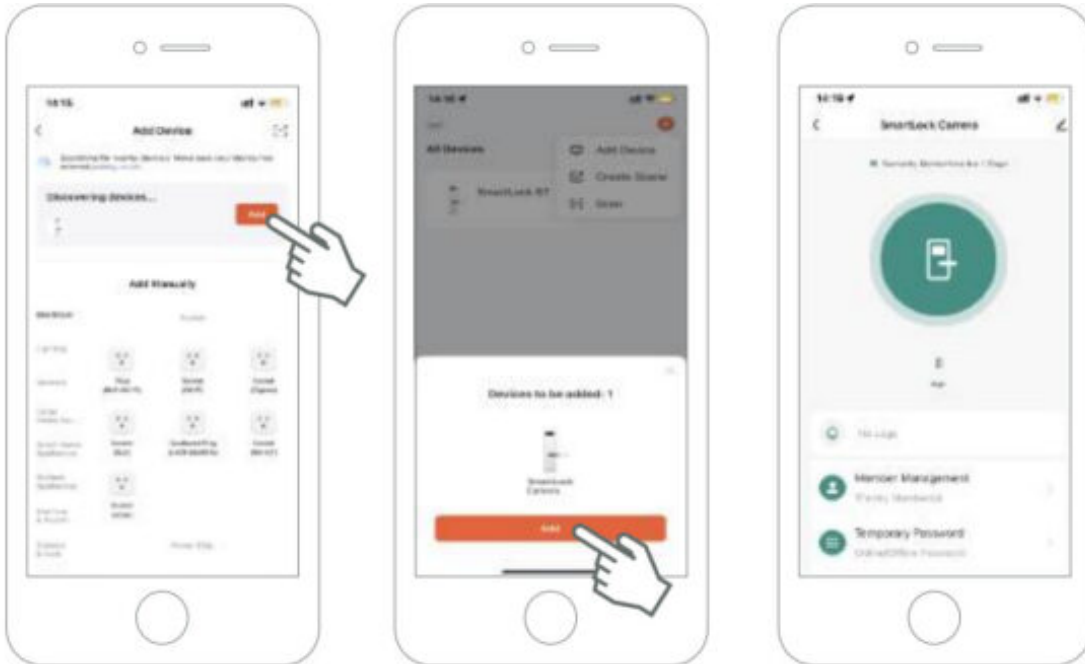
Installation Requirements

1. Download and install TUYA SMART APP from Google Play or APP Store.

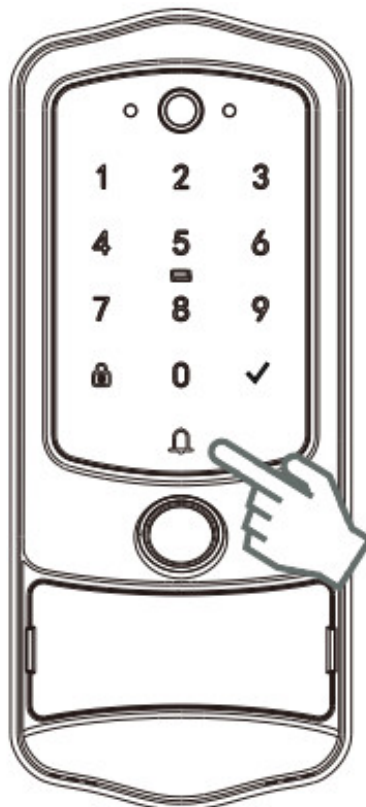


2. Add the “Smart Lock Camera” device.

Please press **1** + ☒ to enter the administrator key first, and press **9** + ☒ to configure the network after the administrator registration before binding the APP.

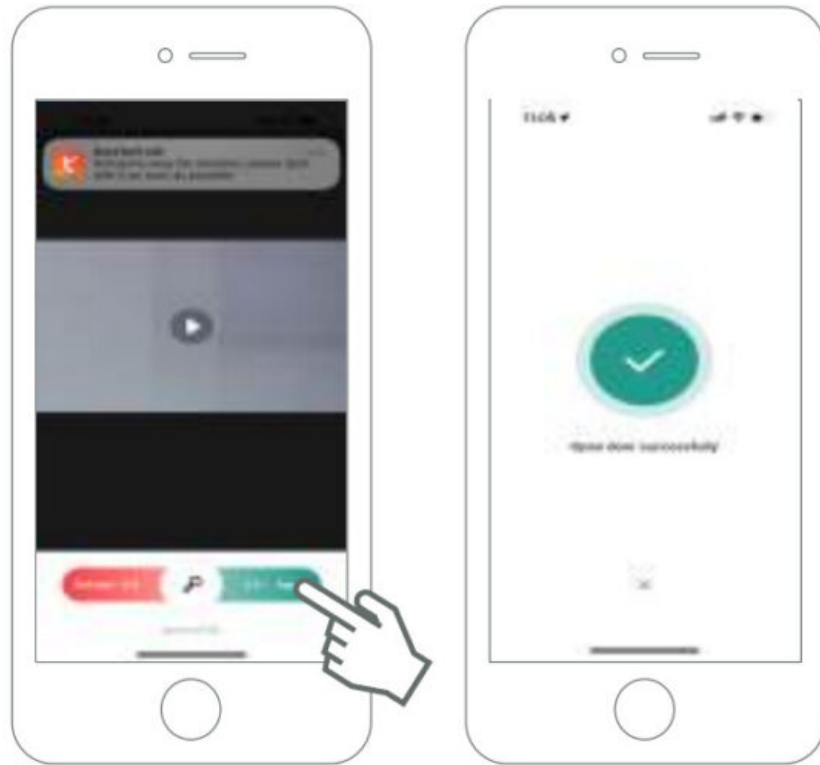


3. Remote unlocking.



1. Ring the doorbell first

2. After receiving the push message, swipe “Agree” to unlock the phone



4. Add a user.

Method 1: Press **1 + ✓** Or **2 + ✓** on the door lock, enter the administrator key and start adding the fingerprint/password/cards.

Method 2: After awakening the door lock (wait for about 5 seconds), press the **5 + ✓** keys to add a user.

Friendly Reminder: If the add operation fails, please check your WiFi environment and try again.



5. Delete a user.

5.1. Synchronize the key information of the door lock by referring to Step ① and Step ②.

5.2. After awakening the door lock (wait for about 5 seconds), press the **6** + **✓** keys to delete a user.

Friendly Reminder: If the delete operation fails, please check your WiFi environment and try again.



6. Set the image display Angle.



Lock Configuration

1. If no administrator is added any key can be unlocked.,

If the administrator status is not set, press **1 + ✓** to access the menu, The “Add Administrator, Please start recording” button light is on and the fingerprint is blinking, Input fingerprint/Enter 6-8 digits password/Add key card.

2. An administrator has been configured.

Press the **1 + ✓** key to add an administrator.

Press the **2 + ✓** key to add a common user.

Press the **3 + ✓** key to adjust the volume.

Press the **4 + ✓** automatic locking settings.

Press the **5 + ✓** key to add the key(The device is successfully connected to the network).

Press the **6 + ✓** key to delete the key(The device is successfully connected to the network).

Press the **7 + ✓** key to restore factory settings.

Press the **8 + ✓** key to switch between English and Chinese.

Press the **9 + ✓** key to enter the distribution network settings.

Press the **0 + ✓** key to enter the door opening direction settings.

Press the **1 + 2 + ✓** key to set the two-factor .

FAQ

Q: What should I do when the lock is out of power?

A : When the lithium battery power is less than 20%, the lock core will prompt you to charge it in time. If the lithium battery runs out, the door lock can be charged by connecting to the mobile power supply, emergency power and unlocking via the Type-C port next to the mechanical key on the front panel, or you can use the mechanical key to unlock through the rear panel.

Q: What should I do if the fingerprint sensor isn't working properly?

A : The lock can recognize fingerprint of children above age 6 and elderly people. But fingerprint patterns can wear down, which means it might work well for some people. You can register your fingerprint several times to increase recognize successful rate.

Q: What should I do if I lost my card?

A : You can delete the card in lock settings or re-add user after resetting the lock.

CAUTION

Risk of explosion if the battery is replaced incorrectly.

Disposal of a battery into fire or a hot oven, or mechanically crushing or cutting of a battery, that can result in an explosion; leaving a battery in an extremely high temperature surrounding environment that can result in an explosion or the leakage of flammable liquid or gas; battery subjected to extremely low air pressure that may result in an explosion or the leakage of flammable liquid or gas.

FCC Statement

This device complies with Part 15 of the FCC Rules. Operation is subject to the following two conditions:

1. This device may not cause harmful interference.
2. This device must accept any interference received, including interference that may cause undesired operation.

Changes or modifications not expressly approved by the party responsible for compliance could void the user's authority to operate the equipment.

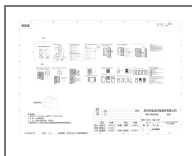
Note: This equipment has been tested and found to comply with the limits for a class B digital device, pursuant to Part 15 of the FCC Rules. These limits are designed to provide reasonable protection against harmful interference in a residential installation.

This equipment generates uses and can radiate radio frequency energy and, if not installed and used in accordance with the instructions, may cause harmful interference to radio communications. However, there is no guarantee that interference will not occur in a particular installation. If this equipment does cause harmful interference to radio or television reception, which can be determined by turning the equipment off and on, the user is encouraged to try to correct the interference by one or more of the following measures:

- Reorient or relocate the receiving antenna.
- Increase the separation between the equipment and receiver.
- Connect the equipment into an outlet on a circuit different from that to which the receiver is connected.
- Consult the dealer or an experienced radio/TV technician for help.



Documents / Resources



[FENDA H1 C20 Smart Deadbolt Lock](#) [pdf] User Guide
H1 C20, H1 C20 Smart Deadbolt Lock, Smart Deadbolt Lock, Deadbolt Lock, Lock

References

- [User Manual](#)

[Manuals+](#), [Privacy Policy](#)

This website is an independent publication and is neither affiliated with nor endorsed by any of the trademark owners. The "Bluetooth®" word mark and logos are registered trademarks owned by Bluetooth SIG, Inc. The "Wi-Fi®" word mark and logos are registered trademarks owned by the Wi-Fi Alliance. Any use of these marks on this website does not imply any affiliation with or endorsement.