



Contents [[hide](#)]

- [1 Felicitysolar H2407 DTU Wireless Module](#)
- [2 Instructions](#)
- [3 Connection between device and Smart WiFi module](#)
- [4 Configure Network](#)
- [5 Create the plant](#)
- [6 Appendix: Troubleshooting table](#)
- [7 Documents / Resources](#)
 - [7.1 References](#)

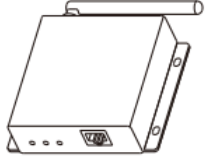


Felicitysolar H2407 DTU Wireless Module



Instructions

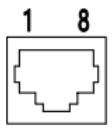
Model

NO	NAME	MODEL	WiFi NETWORK	PICTURE
①	Smart WiFi DTU-S	IOTH2407	2.4G WiFi	
②	Smart WiFi DTU-M	IOTH2406	2.4G WiFi	

LED status:

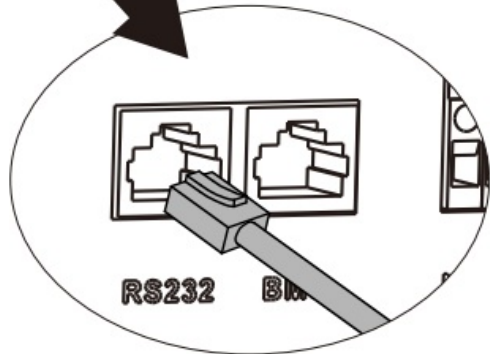
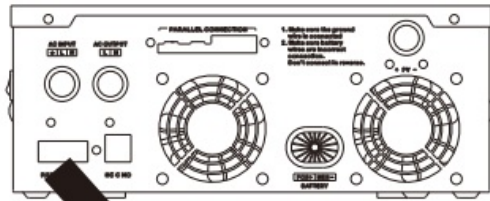
PWR	ON	Normal power supply
COM	ON	Normal communication with the solar device
NET	ON	Normal communication with the data server

Detailed Pin Function Of RJ45 Port:

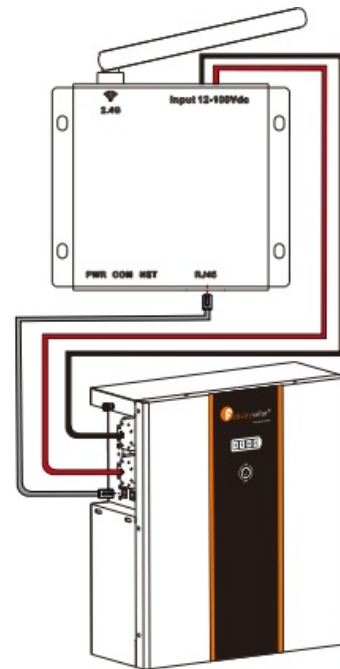
		IOTH2406	IOTH2407
	PIN1	NA	RS232-RX
	PIN2	NA	RS232-TX
	PIN3	NA	12V DC Input
	PIN4	NA	GND
	PIN5	RS485-B	NA
	PIN6	RS485-A	NA
	PIN7	NA	NA
	PIN8	NA	NA

Connection between device and Smart WiFi module

The RJ45 of Smart WiFi DTU-S supports RS232 and power interface. If the RJ45 interface of the device cannot provide 12V DC to Smart WiFi DTU-S, then Smart WiFi DTU-S, like DTU-M, needs to be connected to a separate power supply.



Smart WiFi DTU-S



Smart WiFi DTU-M

Configure Network

Download APP

Scan the QR Code on the right side and download the APP.

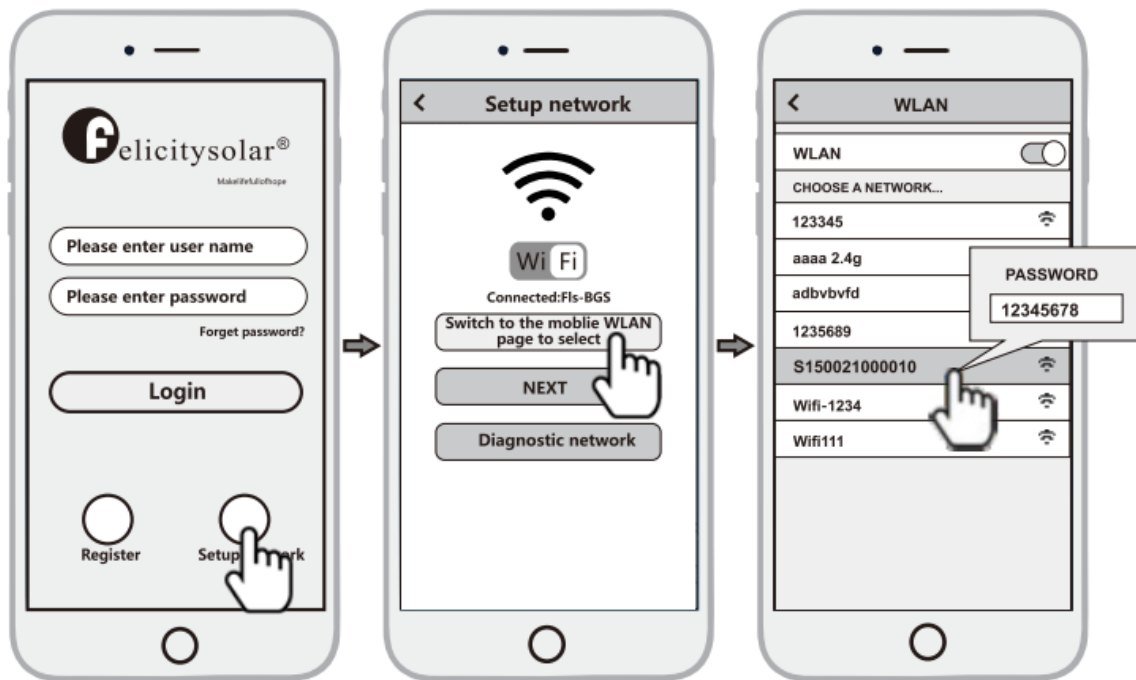


Fsolar APP

Connect to Smart WiFi module wireless network

Configure the mobile phone WLAN to connect to the wireless network of the Smart WiFi module.

1. Run the APP, enter the login page, click the Setup network button to enter the network configuration page.
2. On the network configuration page, click the switch to mobile WLAN page to selection button to enter the mobile phone WLAN page.

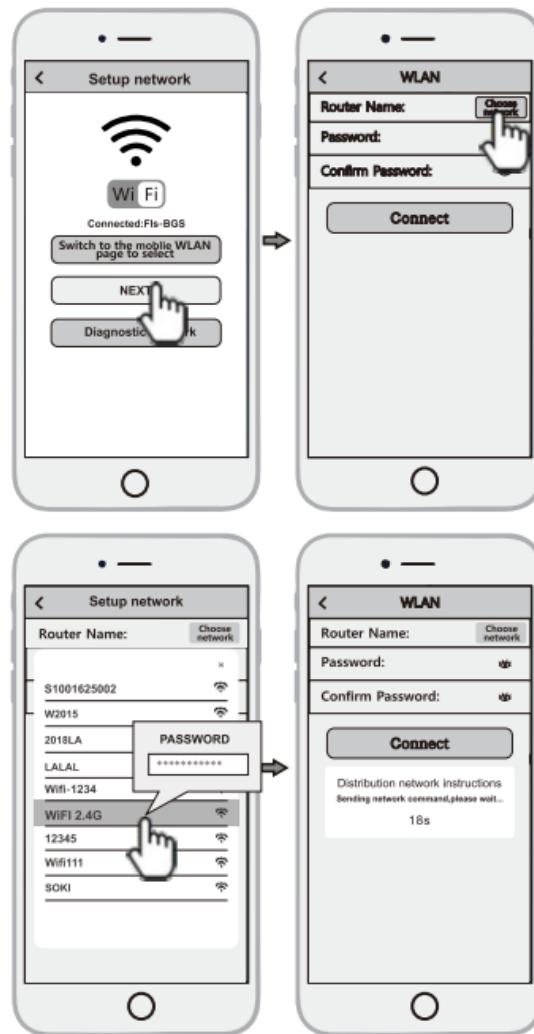


3. On the WLAN page of the mobile phone, find the corresponding wireless network name (SSID) of the Smart WiFi module, starting with S(e.g. Snnxxxxxxxxxx, the xxxxxxxxx is the same as the last 10 bytes of the Smart Wifi module serial number), enter the module wireless network password (default password: 12345678), and connect to the wireless network of the Smart WiFi module.

Configure the network

1. After the mobile WLAN is connected to the wireless network of the Smart WiFi module, return to the network configuration page of the APP and click the NEXT button to enter the WiFi network page.
2. On the WiFi network page, click the choose network button, select the router wireless network to which the Smart WiFi module needs to connect, enter the router wireless network password and click the Connect button.
3. And then wait for the Smart WiFi module to connect to the router's wireless network, which will take some time.

Note: if the LED status of NET is always on, it indicates that the Smart WiFi module has been correctly connected to the server. Otherwise, the Smart WiFi module is not connected to the server. Then you can use the diagnostic function of the APP or according to the fault appendix to troubleshoot the problem.



Create the plant

After the Smart WiFi module is connected to the server, it will transmit the data of the solar device to the server. And after the plant is created, users can view and manage the solar device via the APP or web browser.

Manage device via APP

Register an account

Run the APP, enter the login page, click the register button, fill in the relevant information, and register an account.

Adding devices

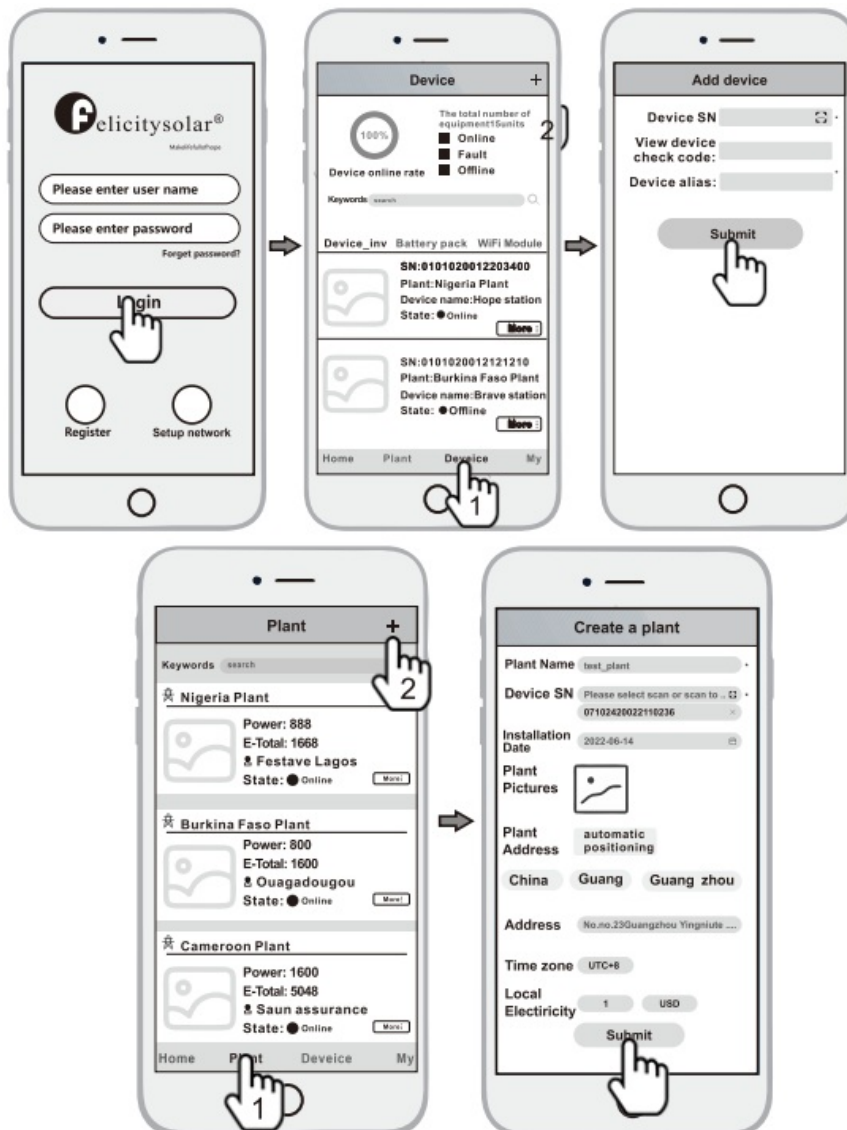
1. After logging into the APP with an account, enter the home page, click the Device button to enter the device interface.
2. Click the + button to enter the Add Device page, and fill in the relevant information as

required. Note: Device SN refers to a solar device serial number, such as an inverter serial number.

Adding plant

1. After adding the device, click the Plant button to enter the plant interface.
2. Click the+ button to enter the page of adding the plant fill in relevant information as required and finally click the Submit button to add the plant.

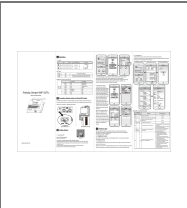
Manage the device via a web browser, please refer to: <https://shine.felicitysolar.com>



Appendix: Troubleshooting table

LED Status			Indicate	Troubleshooting
PWR	COM	NET		
ON			Normal power supply	Normal
ON	ON		Normal communication with solar device	Normal
ON		ON	Normal communication with the data server	Normal
ON	Fast Flash		Upgrading the solar device	Normal
OFF			Abnormal power supply firmware	1.The power supply of the power interface is abnormal 2. Check whether the screws are tightened 3.Smart WiFi module failure
ON	OFF or Slow Flash		Abnormal communication with the solar device	1.Check that the screws are tightened 2.Check whether the RJ45 port connection is abnormal
ON		Flash	Abnormal communication with the router or the data server	1.Check the router information 1) Confirm whether to configure wireless information to connect to the router 2) The router name should consist of English letters and numbers, it does not support special symbols 3) Confirm whether the router connected to the Smart WiFi module can connect to the Internet 2.Check if you filled in the correct name and password of the router when configuring it 3.Confirm whether the signal quality between the Smart WiFi module and the router is good

Documents / Resources

	<p>Felicitysolar H2407 DTU Wireless Module [pdf] Installation Guide H2407, H2407 DTU Wireless Module, DTU Wireless Module, Wireless Module, Module</p>
---	--

References

- [User Manual](#)

◆ DTU Wireless Module, Felicitysolar, H2407, H2407 DTU Wireless Module, Module, Wireless

■ Felicitysolar Module

Leave a comment

Your email address will not be published. Required fields are marked *

Comment *

Name

Email

Website

Save my name, email, and website in this browser for the next time I comment.

Post Comment

Search:

e.g. whirlpool wrf535swhz

Search

[Manuals+](#) | [Upload](#) | [Deep Search](#) | [Privacy Policy](#) | [@manuals.plus](#) | [YouTube](#)

This website is an independent publication and is neither affiliated with nor endorsed by any of the trademark owners. The "Bluetooth®" word mark and logos are registered trademarks owned by Bluetooth SIG, Inc. The "Wi-Fi®" word mark and logos are registered trademarks owned by the Wi-Fi Alliance. Any use of these marks on this website does not imply any affiliation with or endorsement.