



358-010243-01 Felicity Smart WiFi Module Installation Guide

[Home](#) » [Felicity](#) » 358-010243-01 Felicity Smart WiFi Module Installation Guide 

Contents

1 358-010243-01 Felicity Smart WiFi Module Installation Guide

1.1 Instructions

1.1.1 Model

1.2 Connection between device and Smart WiFi module

1.3 Configure Network

1.3.1 Download APP

1.3.2 Connect to Smart WiFi module wireless network

1.3.3 Configure the network

1.4 Create the plant

1.4.1 Manage device via APP

1.4.2 Manage the device via a web browser

1.5 Appendix: Troubleshooting table

2 Documents / Resources

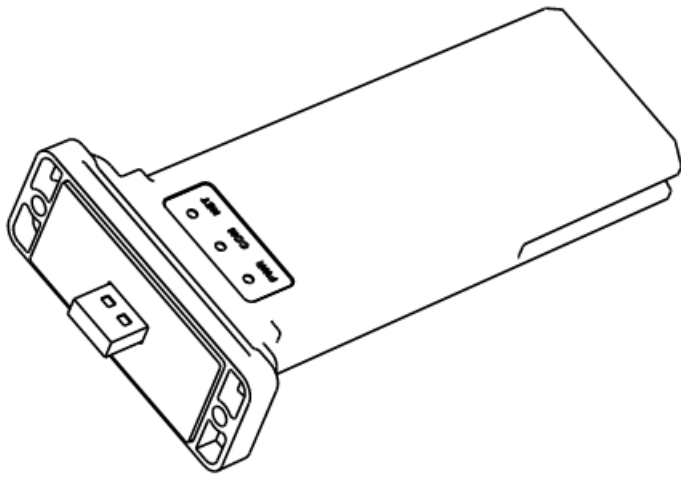
2.1 References

3 Related Posts

358-010243-01 Felicity Smart WiFi Module Installation Guide

Felicity Smart WiFi Module

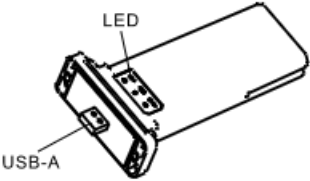
Quick Install Guide



358-010243-01

Instructions

Model

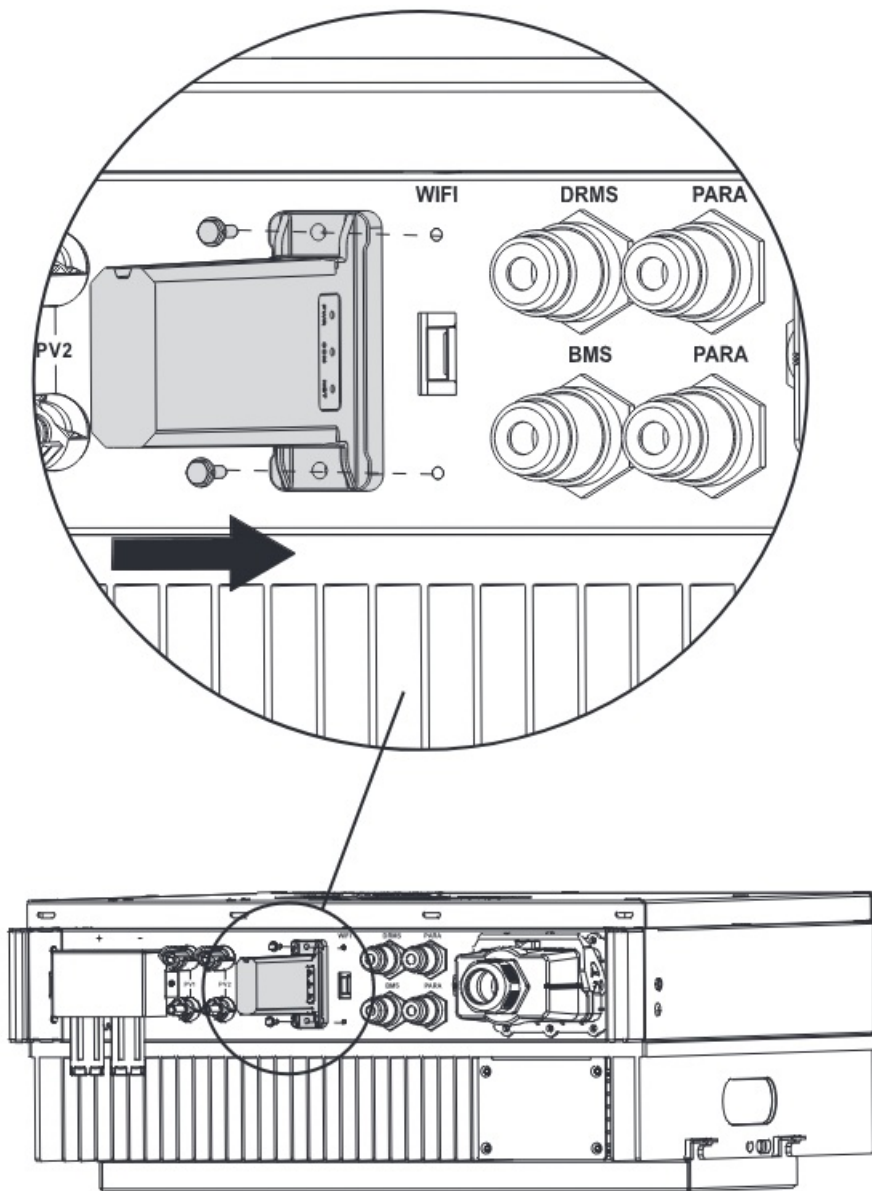
NO	NAME	MODEL	WiFi NETWORK	PICTURE
1	Smart WiFi-S	IOTH2401	2.4G WiFi	
2	Smart WiFi-M	IOTH2402	2.4G WiFi	

LED status:

PWR	ON	Normal power supply
COM	ON	Normal communication with the solar device
NET	ON	Normal communication with the data server

Connection between device and Smart WiFi module

Insert the USB-A port of the smart WiFi module into the WiFi port of the solar device and tighten it with the screw.



Configure Network

Download APP

Scan the QR Code on the right side and download the APP.

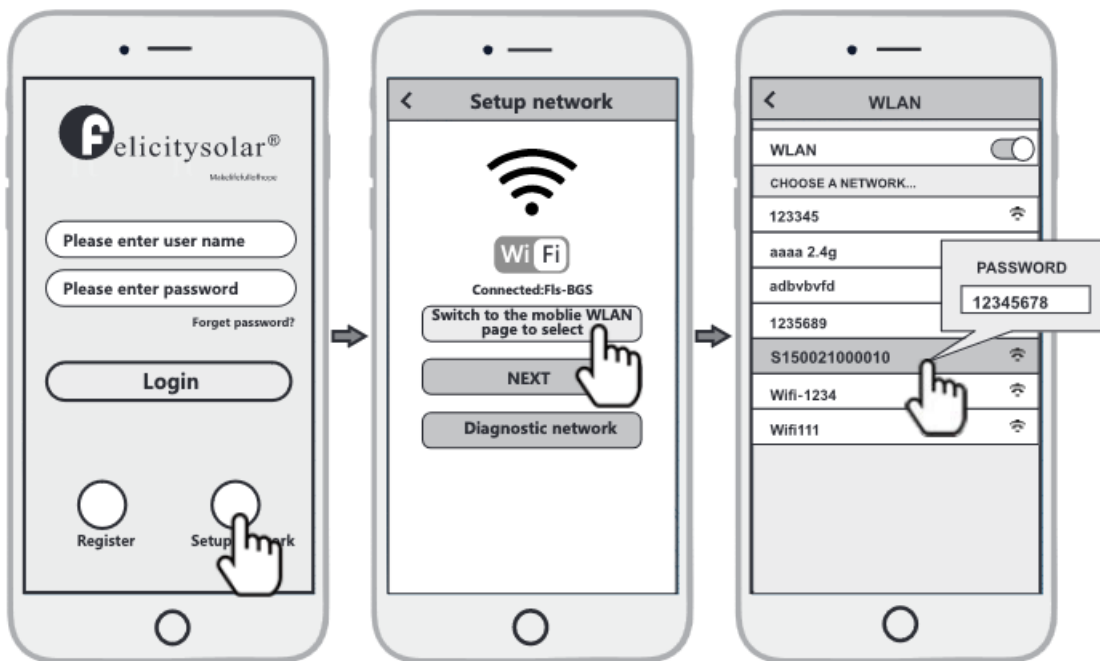


Fsolar APP

Connect to Smart WiFi module wireless network

Configure the mobile phone WLAN to connect to the wireless network of the Smart WiFi module.

1. Run the APP, enter the login page, click the Setup network button to enter the network configuration page.
2. On the network configuration page, click the switch to mobile WLAN page to selection button to enter the mobile phone WLAN page.

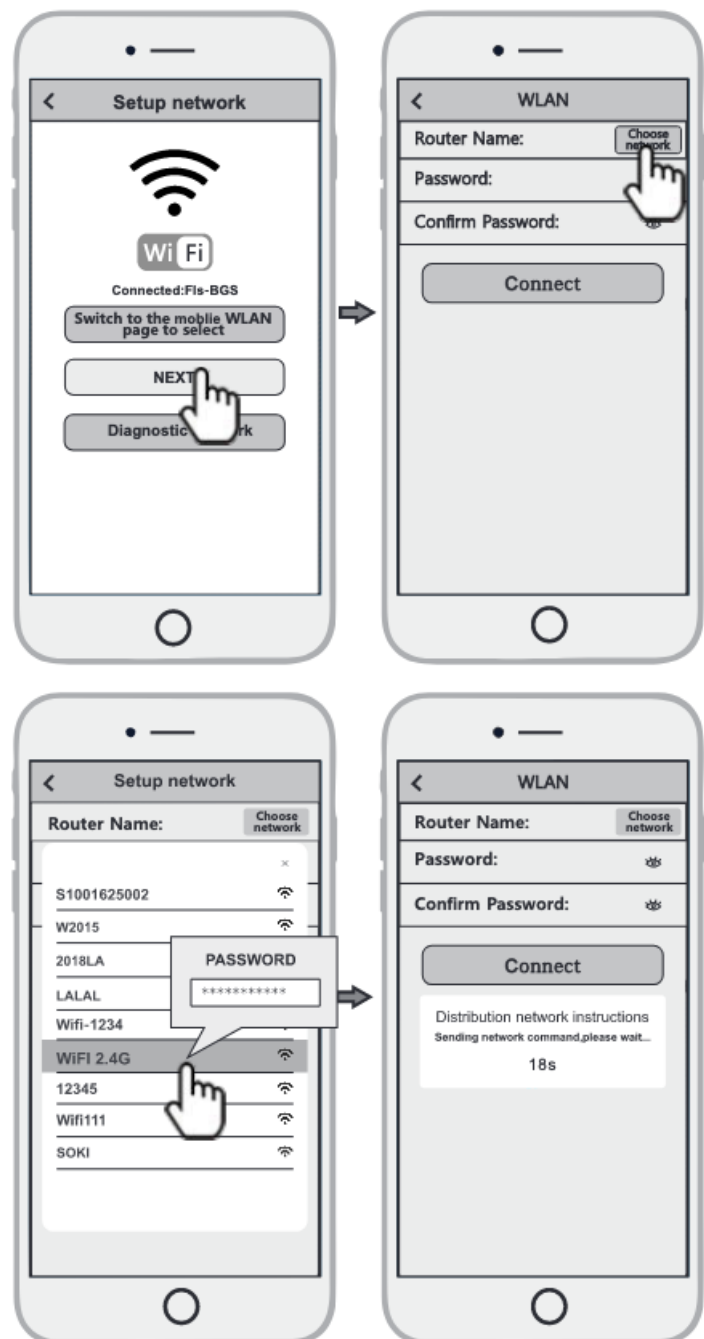


3. On the WLAN page of the mobile phone, find the corresponding wireless network name (SSID) of the Smart WiFi module, starting with S(e.g. SnnxxxxxxXXXX, the xxxxxxxx is the same as the last 10 bytes of the Smart WiFi module serial number), enter the module wireless network password (default password: 12345678), and connect to the wireless network of the Smart WiFi module.

Configure the network

1. After the mobile WLAN is connected to the wireless network of the Smart WiFi module, return to the network configuration page of the APP and click the NEXT button to enter the WiFi network page.
2. On the WiFi network page, click the choose network button, select the router wireless network to which the Smart WiFi module needs to connect, enter the router wireless network password and click the Connect button.
3. And then wait for the Smart WiFi module to connect to the router's wireless network, which will take some time.

Note: if the LED status of NET is always on, it indicates that the Smart WiFi module has been correctly connected to the server. Otherwise, the Smart WiFi module is not connected to the server. Then you can use the diagnostic function of the APP or according to the fault appendix to troubleshoot the problem.



Create the plant

After the Smart WiFi module is connected to the server, it will transmit the data of the solar device to the server. And after the plant is created, users can view and manage the solar device via the APP or web browser.

Manage device via APP

Register an account

Run the APP, enter the login page, click the register button, fill in the relevant information, and register an account.

Adding devices

1. After logging into the APP with an account, enter the home page, click the Device button to enter the device interface.
2. Click the + button to enter the Add Device page, and fill in the relevant information as required.

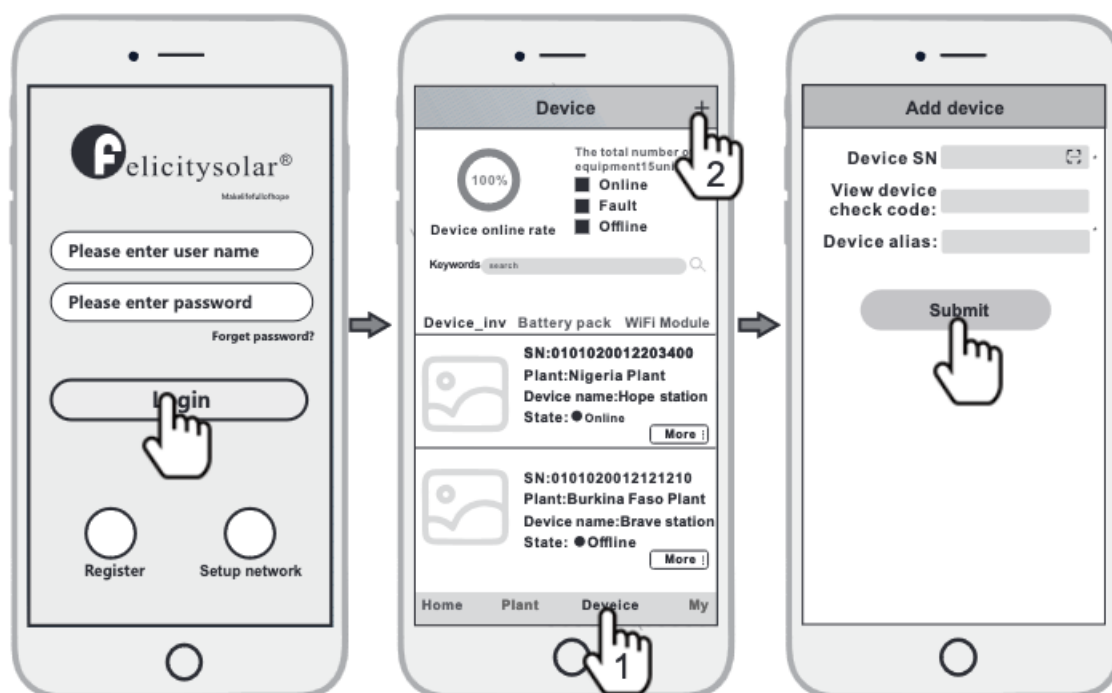
Note: Device SN refers to a solar device serial number, such as an inverter serial number.

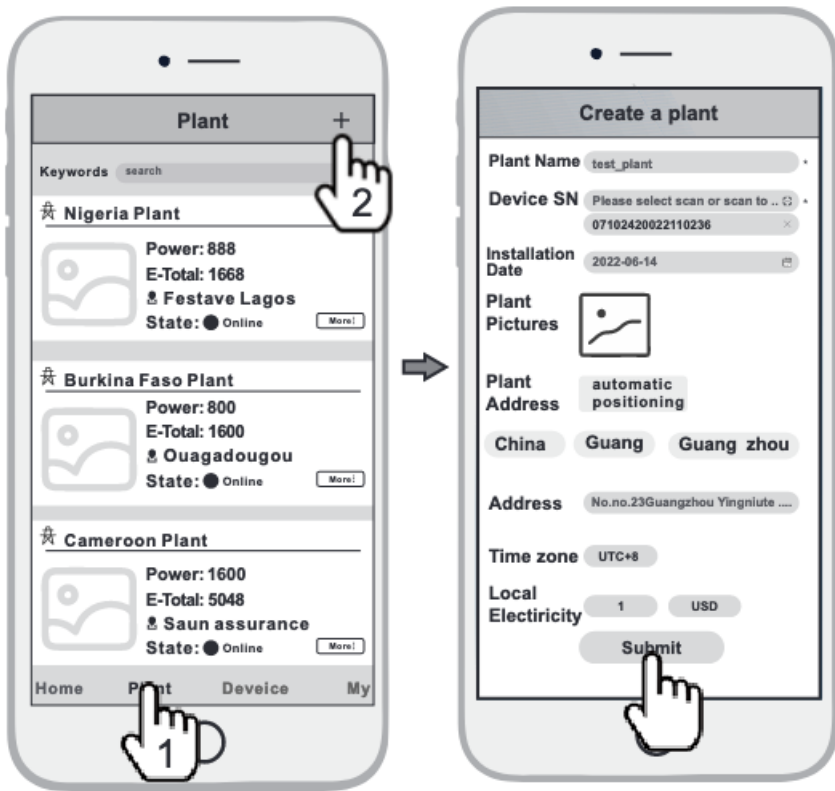
Adding plant

1. After adding the device, click the Plant button to enter the plant interface.
2. Click the + button to enter the page of adding the plant fill in relevant information as required and finally click the Submit button to add the plant.

Manage the device via a web browser

Please refer to: <https://shine.felicitysolar.com>.

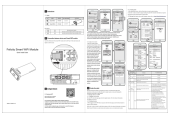




Appendix: Troubleshooting table

LED Status			Indicate	Troubleshooting
PWR	COM	NET		
ON			Normal power supply	Normal
ON	ON		Normal communication with solar device	Normal
ON		ON	Normal communication with the data server	Normal
ON	Fast Flash		Upgrading the solar device	Normal
OFF			Abnormal power supply firmware	1.Power supply of usb-a port is abnormal 2. Check whether the screws are tightened 3.Smart WiFi module failure
ON	OFF or Slow Flash		Abnormal communication with the solar device	1.Check that the screws are tightened 2.Check whether the USB port connection is abnormal
ON		Flash	Abnormal communication with the router or the data server	1.Check the router information 1) Confirm whether to configure wireless information to connect to the router 2) The router name should consist of English letters and numbers, it does not support special symbols 3) Confirm whether the router connected to the Smart WiFi module can connect to the Internet 2.Check if you filled in the correct name and password of the router when configuring it 3.Confirm whether the signal quality between the Smart WiFi module and the router is good

Documents / Resources

	Felicity 358-010243-01 Felicity Smart WiFi Module [pdf] Installation Guide 358-010243-01 Felicity Smart WiFi Module, 358-010243-01, Felicity Smart WiFi Module, Smart WiFi Module, WiFi Module, Module
---	---

References

-  [Fsol Intelligent Monitoring Platform](#)