

FEIYUTECH VIMBLE Tech Vimble C Smart Phone Gimbal Stabilizer



FEIYUTECH VIMBLE Tech Vimble C Smart Phone Gimbal Stabilizer User Manual

[Home](#) » [FeiyuTech](#) » FEIYUTECH VIMBLE Tech Vimble C Smart Phone Gimbal Stabilizer User Manual 

Contents

- 1 FEIYUTECH VIMBLE Tech Vimble C Smart Phone Gimbal Stabilizer
- 2 Product Usage Instructions
- 3 User Guide
- 4 Product Overview
- 5 Balance Adjustment
- 6 Download and connect App
- 7 Modes/Functions
- 8 Explanation of LED indicator
- 9 Firmware Upgrade
- 10 Gimbal initialization
- 11 Parameters
- 12 DISCLAIMER
- 13 Documents / Resources
 - 13.1 References



FEIYUTECH VIMBLE Tech Vimble C Smart Phone Gimbal Stabilizer



Product Usage Instructions

Getting Started

To begin using the product, please follow these steps:

1. Remove the product from the packaging.
2. Ensure all included accessories are present.
3. Read the user manual carefully for a better understanding of the product.

Assembly

To assemble the product, please follow these steps:

1. Identify the different components of the product.
2. Refer to the provided assembly instructions or user manual for detailed assembly steps.
3. Carefully follow the instructions to properly assemble the product.
4. Ensure all connections are secure and tight.

Powering On

To power on the product, please follow these steps:

1. Connect the product to a power source using the provided power cord.
2. Make sure the power switch is in the "Off" position.
3. Plug the power cord into a compatible power outlet.
4. Switch on the power using the power switch.

5. Wait for the product to initialize and enter the standby mode.

Product Operation

To operate the product, please follow these steps:

1. Refer to the user manual for a detailed description of the product's features and functions.
2. Familiarize yourself with the control panel and buttons.
3. Use the appropriate buttons or controls to navigate through menus and settings.
4. Follow the instructions provided in the user manual for specific operations.

Maintenance

To ensure the longevity of the product and optimal performance, please follow these maintenance guidelines:

1. Regularly clean the product using a soft cloth and mild cleaning solution.
2. Avoid exposing the product to extreme temperatures or moisture.
3. Keep the product away from direct sunlight and dusty environments.
4. Do not attempt to disassemble or repair the product yourself. Refer to authorized service centres for any repairs or maintenance.

User Guide

Attention!

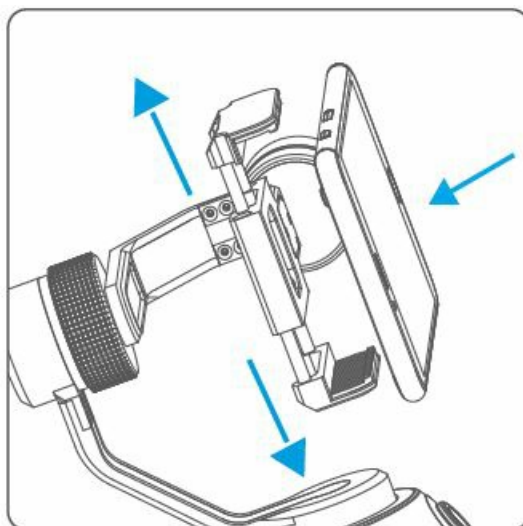
1. Please install the smartphone before powering on the gimbal!
2. When not in use, turn off the gimbal and then remove the smartphone.

Install the phone

Tips:

Please take off the protective casing of the smartphone before installation.

Attach the smartphone with the quick-release adapter, and ensure it is secure.



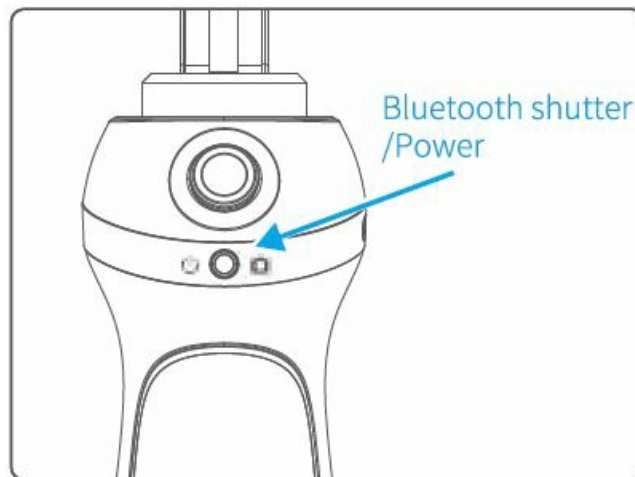
Power on/off

Attention:

Turn the gimbal on after the phone has been secured properly. Before use, please be sure to fully charge the battery.

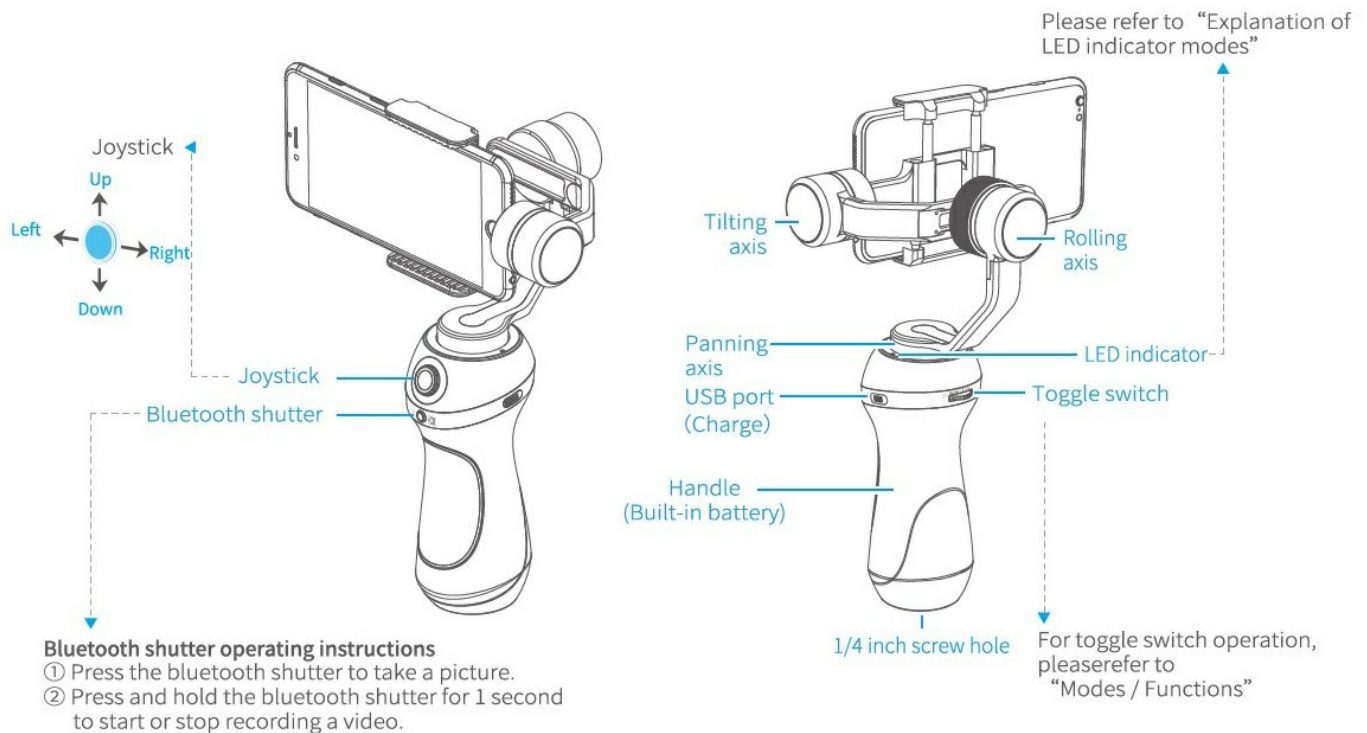
In case of a low battery, the indicator will flash red 3 times every 5 seconds. Please charge the gimbal.

- **Power on:** Short press Bluetooth shutter/Power 0.5s when the green light is on, and the gimbal turns on.
- **Power off:** Long press Bluetooth shutter/Power at the same time 5s when the red light changes from quick flashing to constant on, the gimbal turns off.

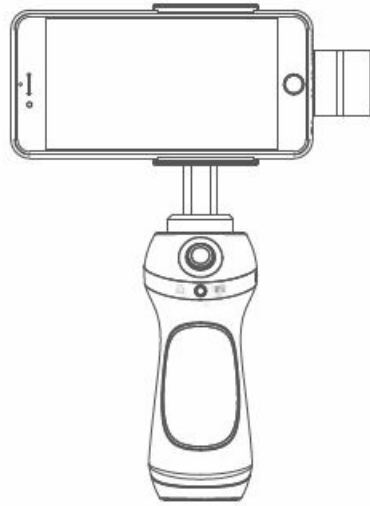


Product Overview

The smartphone shown in the picture is only for reference



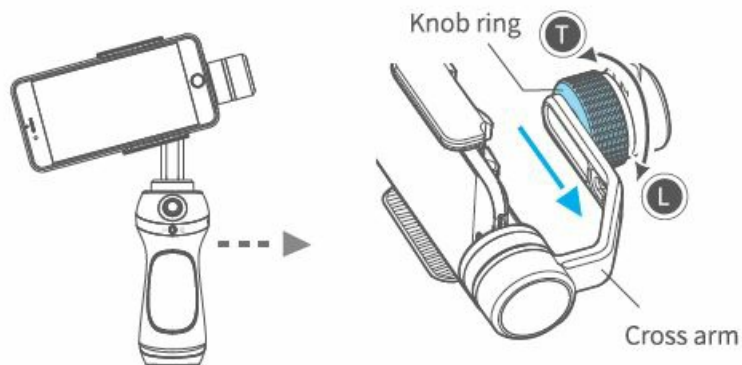
Balance Adjustment



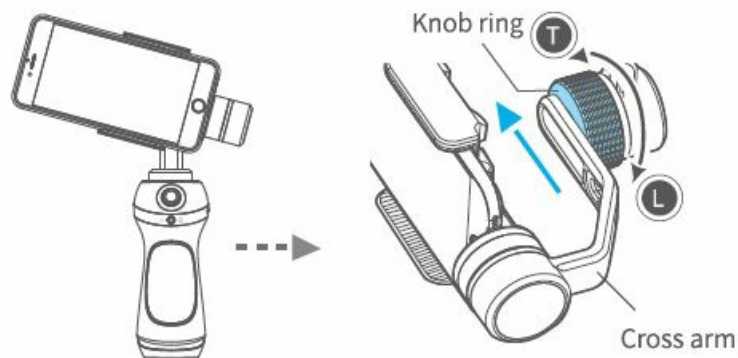
Best Balance

How to balance adjustment

If the iPhone is tilted to the right, then lose the knob ring, move the cross arm to the left, try to adjust to the best balance then tighten it.



If the iPhone is tilted to the left, then lose the knob ring, move the cross arm to the right, try to adjust to the best balance then tight it.



Download and connect App

1. Download App

Download “Feiyu ON” and install it.

1. iOS version:



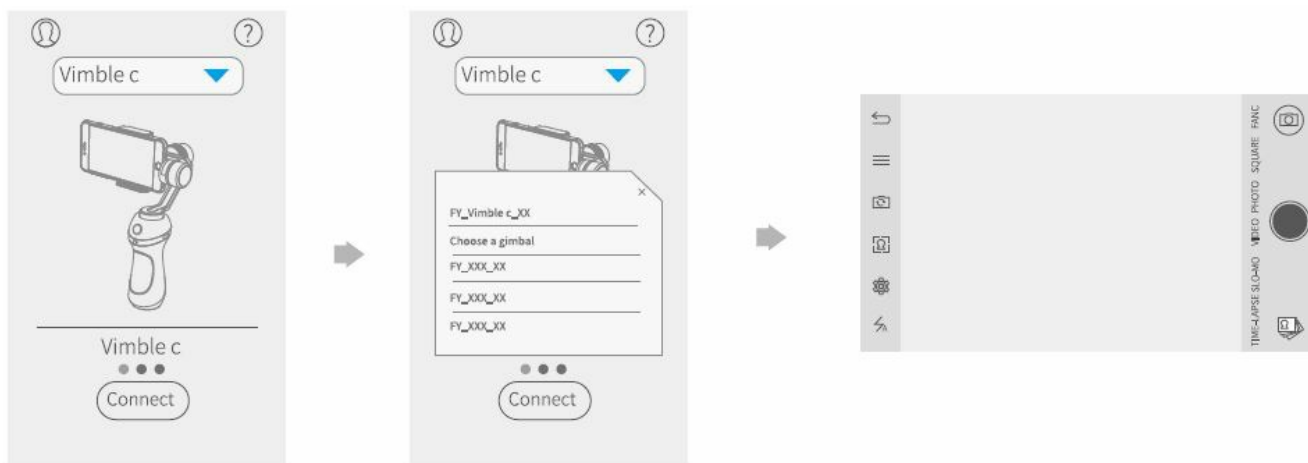
2. Android version:



Please scan the two-dimensional code via the browser.

2. Connecting App

Start the app on your smartphone, and follow the instructions to connect the smartphone with the gimbal via bluetooth.



Modes/Functions

Working Modes

• Panning Mode

The tilting and rolling direction are fixed, and the camera lens moves according to the hand movement of the user.

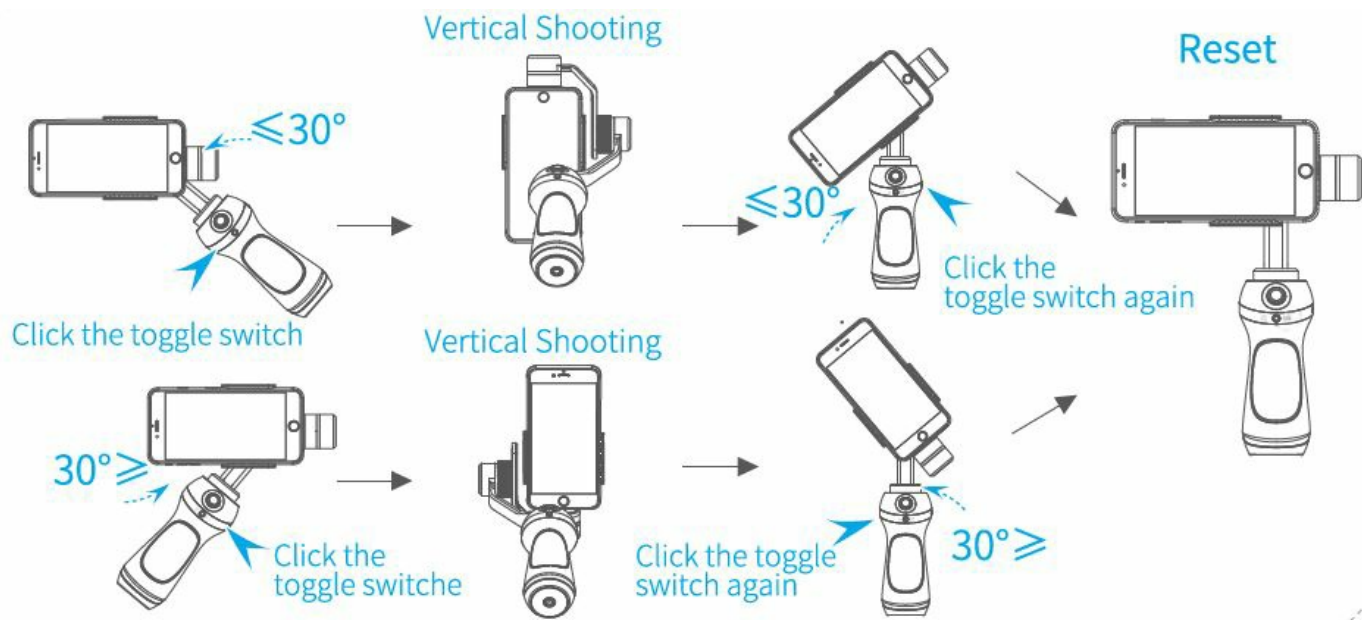
• Panning and Tilting Mode

The rolling direction is fixed, and the camera lens moves according to the hand movement of the user.

• Lock Mode

The orientation of the camera is fixed.

Vertical Shooting Mode



Mode/Function Operating Instructions

Toggle switch Function Instructions	Modes / Functions	Explanation
Single tap	Panning and Tilting Mode	Boot default panning mode, press one time then switch to panning and tilting mode, press again switch to panning mode
Long press	Lock Mode	Under panning mode, panning and tilting mode, long press then switch to lock mode, release to go back
Triple tap	Reset	Reset the tilting axis of the gimbal to initial orientation and initial mode
Long press Bluetooth shutter/Power and Toggle switch 1s	Standby	Press the toggle switch again to wake up the gimbal
Left and right toggle	Zoom in / Zoom out	Need to connect mobile phone APP

Explanation of LED indicator

Note: The two GB indicators have the same status.

Gimbal operating mode and LED indicator:

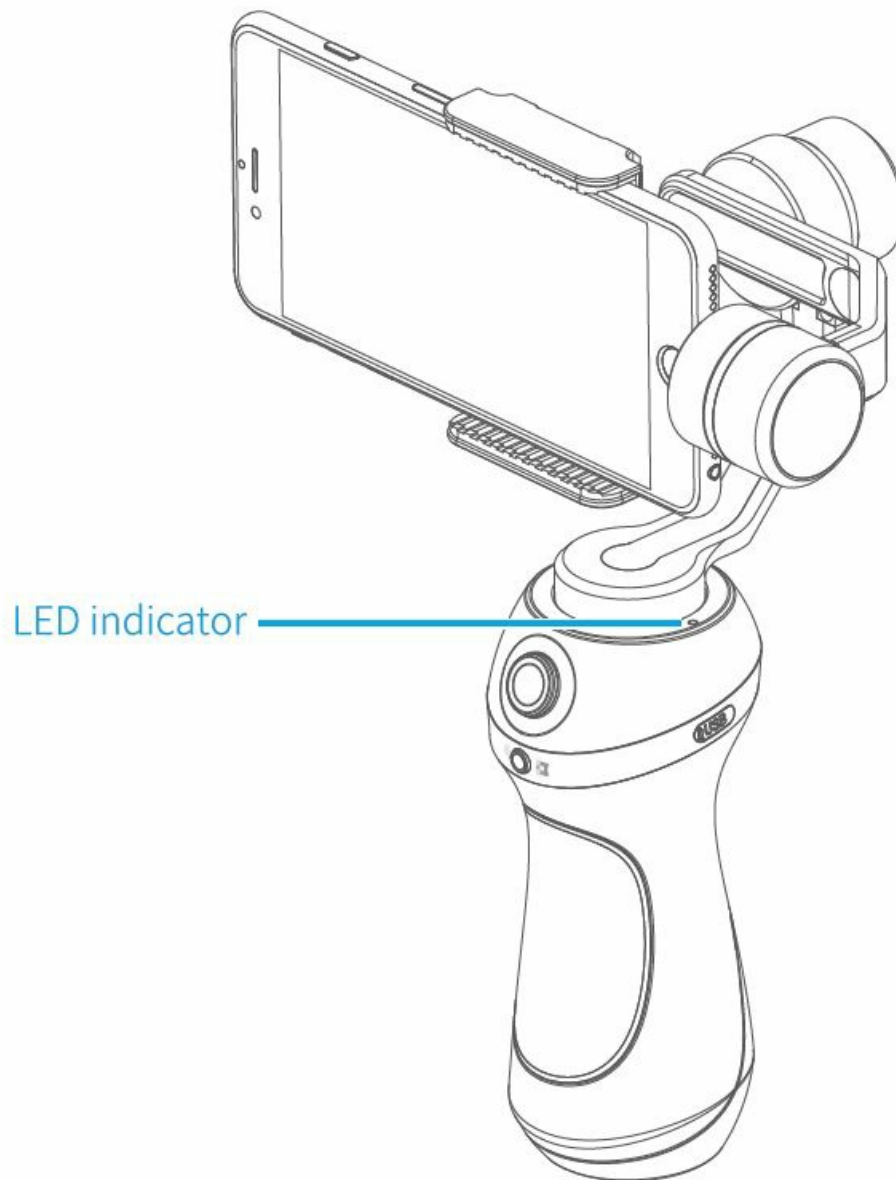
RGB three-color lights/Mode/ Status

- Blue light flashes once Panning
- Blue light flashes twice Panning and tilting mode
- Blue light flashes three times Standby
- The blue light on steadily Lock mode/ Initializing
- The blue light keeps flashing Initialization failure/Malfunction
- Red light flashes three times Low power
- The red light keeps flashing Entering standby/Entering power off

LED indicator modes during charging:

RGB three-color lights/Mode/ Status

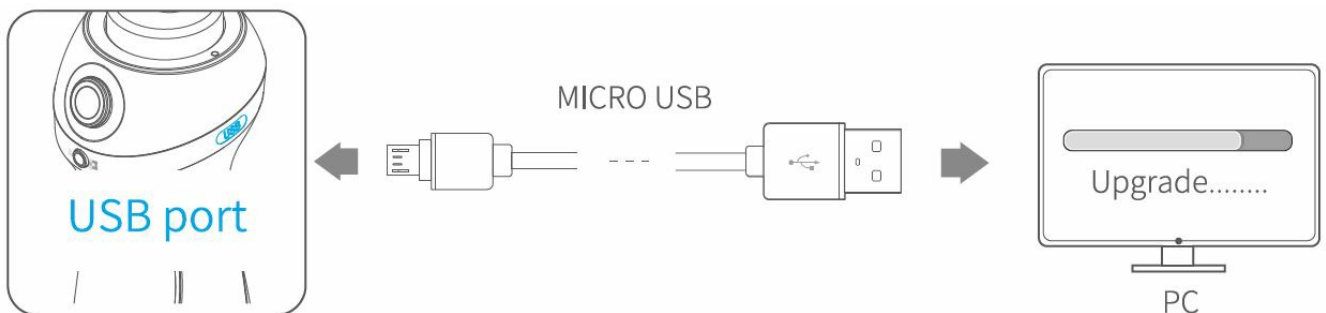
- Greenlight Fully charged
- The red light Gimbal is being charged



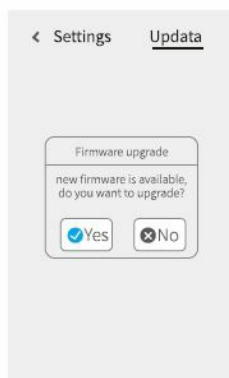
Firmware Upgrade

1. **Option 1:** Connect the gimbal to the PC via a micro USB cable, and then upgrade the firmware.

Please visit the official website www.feiyu-tech.com to download the relevant programs for upgrading, including USB driver, firmware upgrade software and product firmware, install the relevant software, and decompress the firmware files for standby application.



2. **Option 2:** Connect the gimbal with a smartphone via bluetooth, and then upgrade the firmware.

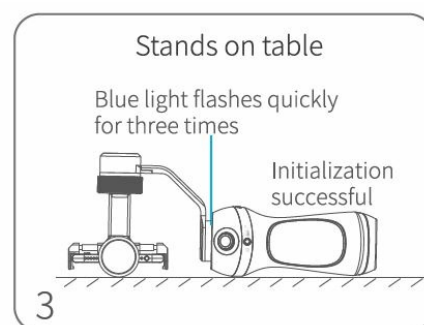
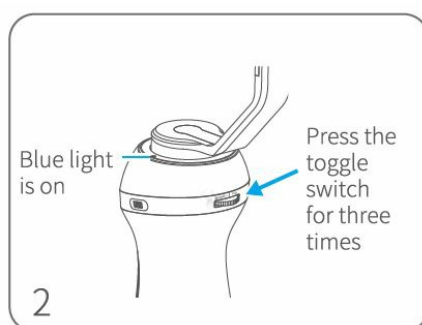
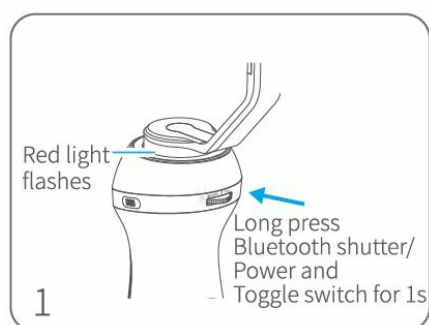


Gimbal initialization

You can initialize your gimbal:

1. when the camera is not level
2. if not used for a long period
3. in case of extreme temperature variations

Adjusting steps:



Parameters

Titling Angle	320°	Titling Increments	min 2°/s max 75°/s
Rolling Angle	320°	Panning Increments	min 3°/s max 150°/s
Panning Angle	320°	Usage time	5 Hours
Adaption	iPhone series / HUAWEI P9 / HUAWEI P9 Plus / Mi 5 / MEIZU MX6 / SAMSUNG NOTE 5 / S7 or other smartphones with the similar dimensions		
Weight	420g (not including smartphone)		

DISCLAIMER

- Prohibit any user for any illegal purpose. Users will be responsible for all behaviours of purchasing and using products.
- The Company assumes no liability for any risks related to or resulting from the debug and use of this product

(including the direct, indirect or third-party losses).

- For any unknown sources of use, we will not be at any services.
- The updating and changes of product firmware and program may cause changes in function descriptions in this user manual, please read the instructions carefully before upgrading the firmware and use the corresponding user manual.
- You can get the latest user manual from the official website: www.feiyu-tech.com.
- Del Tron Intelligence reserves the right to amend this manual and the terms and conditions of use of the product at any time.

Attention

- Please correctly assemble the gimbal per the diagram.
- Please install the phone before powering on the gimbal.
- When the gimbal is not in use or placed on the table, please ensure it is powered off.

GuiLin FeiYu Technology Incorporated Company


- Website: www.feiyu-tech.com
- E-mail: service@feiyu-tech.com
- Tel: +86 (0) 773 2320866

Due to software and hardware improvements, your actual product might differ from the descriptions and pictures in this user manual. You can get the latest user manual from the official website.

For more information, please visit our official website



Documents / Resources

	FEIYUTECH VIMBLE Tech Vimble C Smart Phone Gimbal Stabilizer [pdf] User Manual VIMBLE Tech Vimble C Smart Phone Gimbal Stabilizer, VIMBLE, Tech Vimble C Smart Phone Gimbal Stabilizer, Smart Phone Gimbal Stabilizer, Phone Gimbal Stabilizer, Gimbal Stabilizer, Stabilizer
-------------------------------------------------------------------------------------	---------------------------------------------------------------------------------------------------------------------------------------------------------------------------------------------------------------------------------------------------------------------------------------------------------

References

-  Manual-Hub.com - Free PDF manuals!

- [User Manual](#)

[Manuals+](#), [Privacy Policy](#)

This website is an independent publication and is neither affiliated with nor endorsed by any of the trademark owners. The "Bluetooth®" word mark and logos are registered trademarks owned by Bluetooth SIG, Inc. The "Wi-Fi®" word mark and logos are registered trademarks owned by the Wi-Fi Alliance. Any use of these marks on this website does not imply any affiliation with or endorsement.