

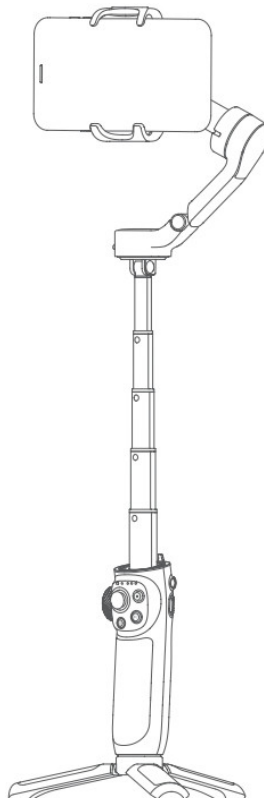


FeiyuTech VB4 3-Axis Handheld Gimbal for Smartphone User Manual

[Home](#) » [FeiyuTech](#) » FeiyuTech VB4 3-Axis Handheld Gimbal for Smartphone User Manual 



VB4 3-Axis Handheld Gimbal for Smartphone Manual



Contents

- 1 VB4 3-Axis Handheld Gimbal for Smartphone
- 2 Overview
- 3 Quick Experience
- 4 Charging
- 5 Landscape & Portrait Mode Switching
- 6 Extend and Reset the Handle
- 7 Tripod
- 8 Connection
- 9 Common Operation
- 10 Mode Introduction
- 11 Operation mode
- 12 Indicator
- 13 Protection mechanism
- 14 Gimbal Initialization
- 15 Specifications
- 16 Documents / Resources

VB4 3-Axis Handheld Gimbal for Smartphone

VB 4 is a three-axis handheld gimbal suitable for smartphone with extendable bar. It is small and foldable. The gimbal supports landscape and portrait shooting, which can also control phone shooting.

Suggestion

Feiyu VB 4 includes below information, please read the information before using the gimbal:

1. Quick start guide
2. Online instruction

Tutorial

- The tutorial videos can be watched at FeiyuTech official website or scan the QR code below.
<https://www.feiyu-tech.com/play/>
- Watch tutorials in video skill page on Feiyu ON.



<https://www.feiyu-tech.com/play/>

Download the Feiyu ON App

Scan the QR code to download the app, or search for “Feiyu ON” in the App Store or Google Play.

* Requires iOS 9.0 or above, Android 6.0 or above.



iOS

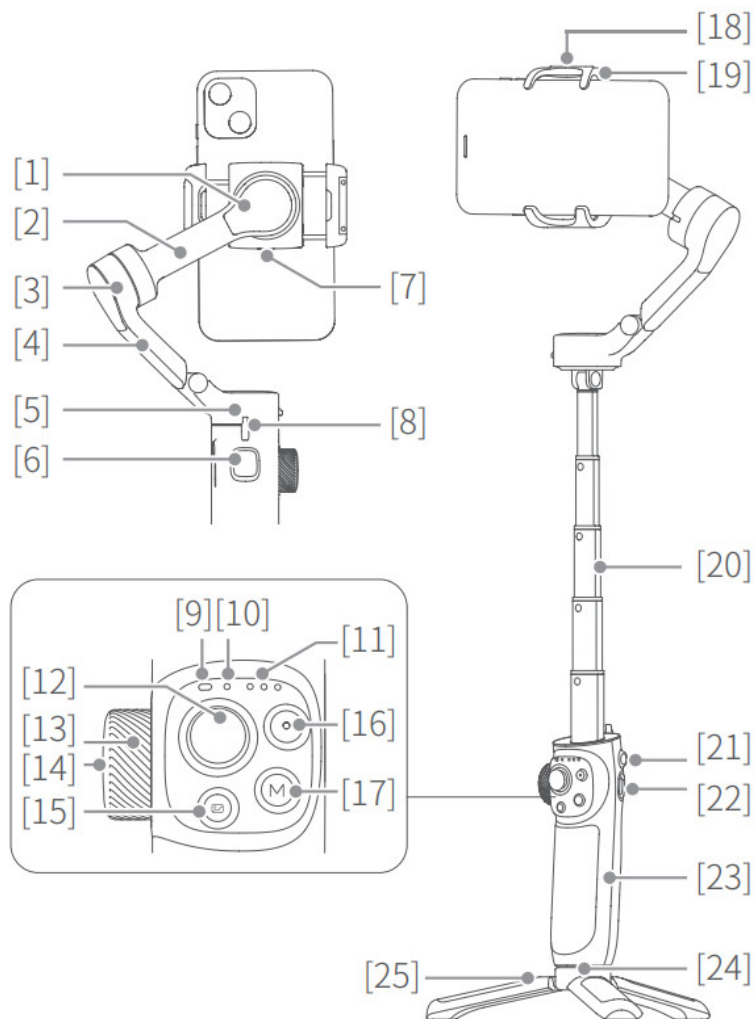
<https://itunes.apple.com/us/app/feiyu-on/id1170606381?mt=8>



Android

https://cdn1.feiyu-tech.com/dl/app/Feiyu_On.apk

Overview



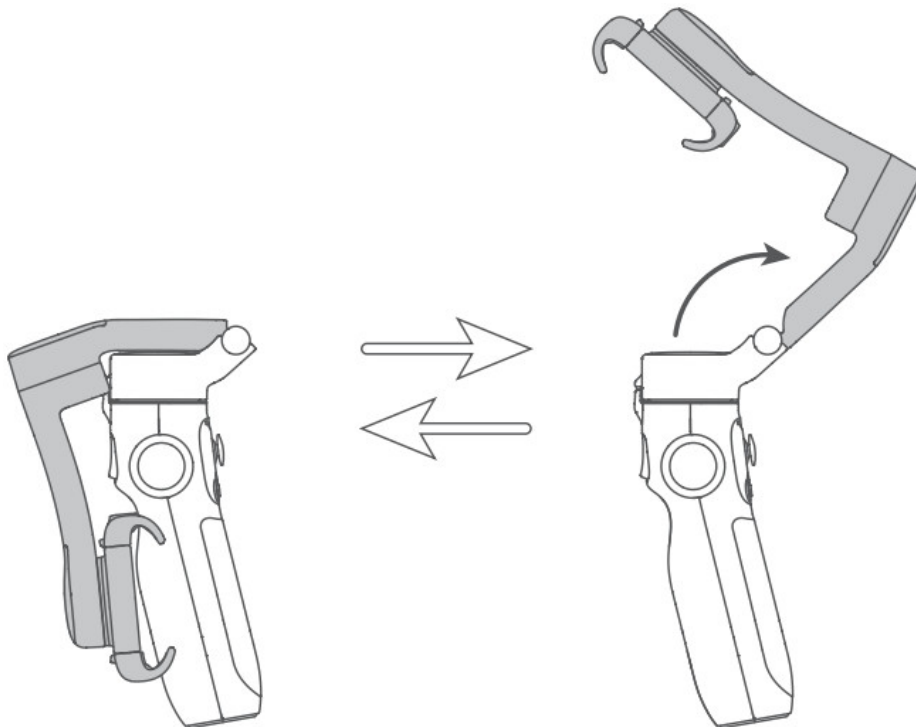
- [1] Roll axis
- [2] Cross arm
- [3] Tilt axis
- [4] Vertical arm
- [5] Pan axis
- [6] Trigger button (custom functions in App)
- [7] USB-C port for accessories
- [8] Limitation
- [9] Status/Battery indicator
- [10] Bluetooth indicator
- [11] Follow status indicator
- [12] Joystick
- [13] Knob

- [14] Knob function switching button
- [15] Album button
- [16] Shutter button
- [17] M button (custom functions in App)
- [18] Magnetizable nameplate
- [19] Smartphone holder
- [20] Extendable rod
- [21] Power button
- [22] USB-C port
- [23] Handle (built-in battery)
- [24] 1/4 inch thread hole
- [25] Tripod

* This product dose NOT include smartphone.

Quick Experience

Step 1: Unfold and fold



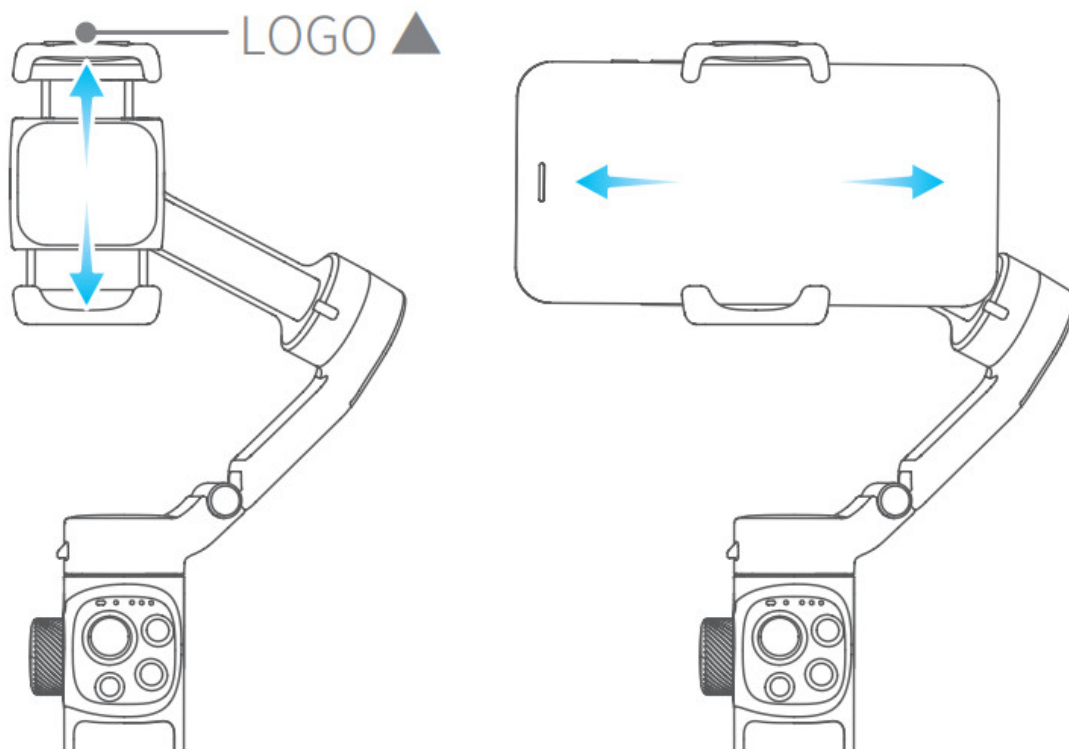
Step 2: Smartphone Installation



It is recommended to remove the smartphone case before installation.

Keep the logo of the smartphone holder upward. Install the smartphone when the gimbal is power off. Keep the smartphone holder in center.

If the smartphone tilted, please move the smartphone left or right to make it horizontal.



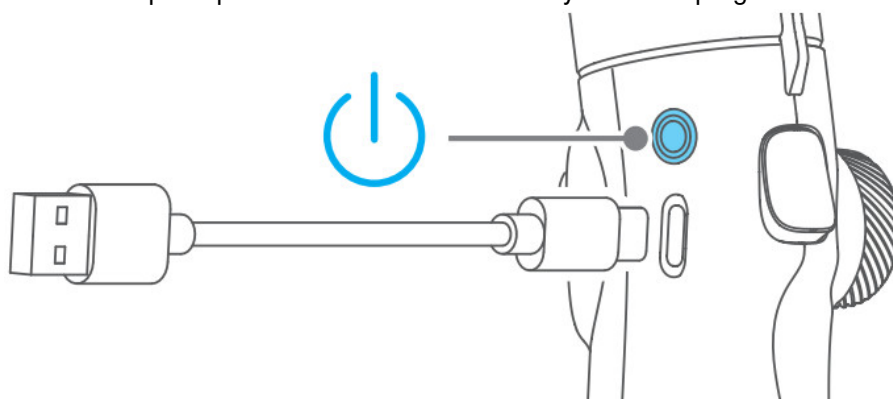
Step 3: Power ON/OFF/Standby



It is recommended to install your smartphone and balance gimbal before power on the gimbal.

Power ON/OFF: Long press the power button and release it when you hear the tone.

Enter standby mode: Double tap the power button to enter standby mode. Tap again to wake up.



Charging



Please fully charge the battery before power on the gimbal for the first time.

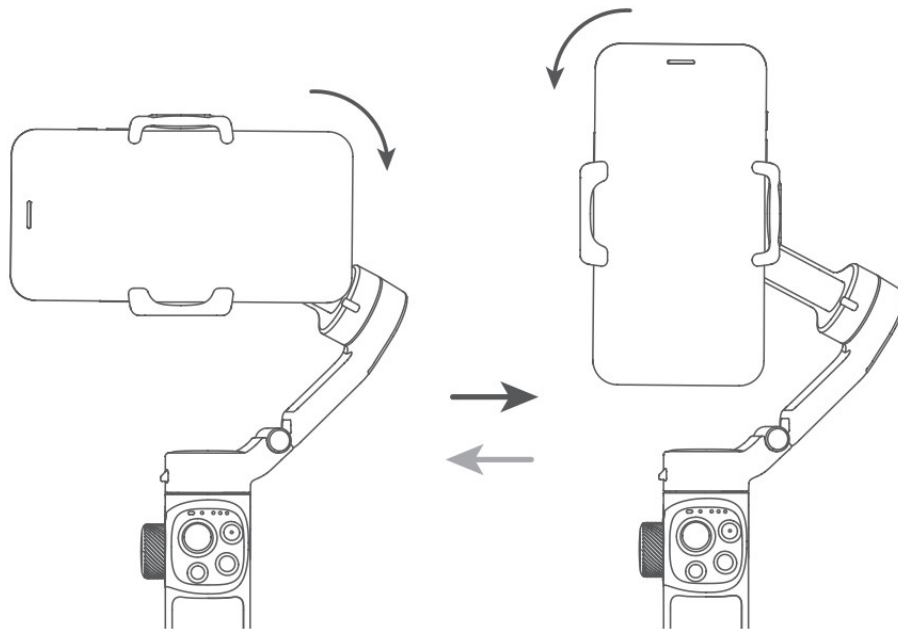
If the battery is too low, red light will flash fast, please charge the gimbal immediately.

Connect the USB-C cable to charge. The indicator light is yellow while charging, and turn green after charging complete.

Landscape & Portrait Mode Switching

Double click the M button or manually rotate the smartphone holder to switch between landscape and portrait mode.

Do not make anti-clockwise rotation in landscape mode, Do not make clockwise rotation in portrait mode.




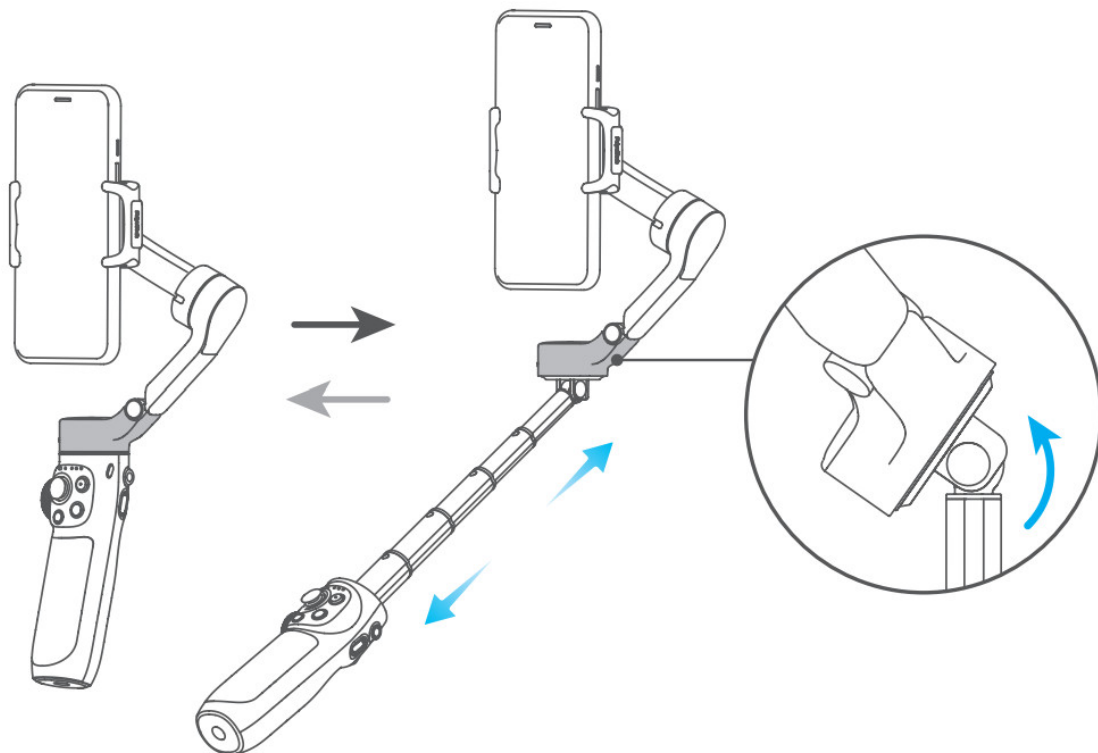
Extend and Reset the Handle

Hold the handle with one hand, hold the bottom of pan axis with other hand.

Extending: Pull the extendable rod out to suitable length.

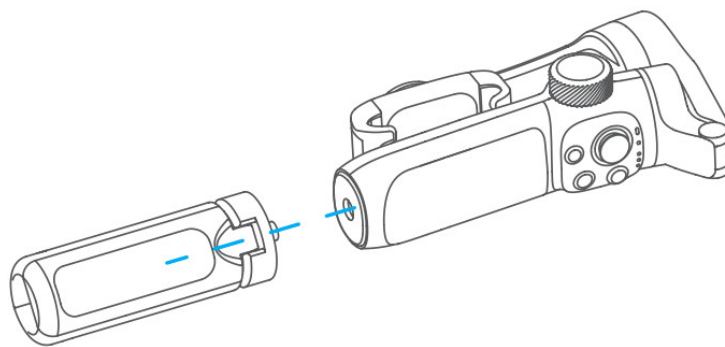
Reset: Push upper grip to make the extendable bar down to handle part.

 Do not rotate the rod to extend or reset it.



Tripod

The tripod is attached to the bottom of the gimbal in a rotating manner. According to the needs of shooting, choose whether to install it.



Connection

7.1 Bluetooth Connection

Turn on the gimbal.

Method one: Download and install Feiyu ON App, run the App, follow the prompts to turn on and connect with the Bluetooth.

Method two: Turn on the smartphone Bluetooth, connect the gimbal Bluetooth in the setting of phone, e.g. FY_VB4_XX.

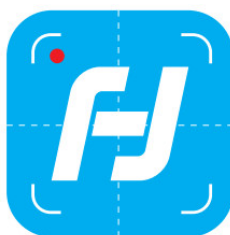
If fail to find the Bluetooth:

Method one: Shut down the App in the background.

Method two: Move downward the joystick and triple tap the power button at the same time to reset the Bluetooth connection of gimbal. (And the Bluetooth can only be reconnected after reboot the gimbal)

7.2 App Connection

7.2.1 Download the Feiyu ON App



Feiyu ON

Photo / Video	Free panorama	Ultra -wide angle	180° panora
360° panorama	Overlapping image	Light rail mode	Quick panorama
Static timelapse	Track timelapse	Dolly Zoom	Light rail Video
Video editing	Firmware Upgrade	

Scan the QR code to download the app, or search for "Feiyu ON" in the App Store or Google Play.

* Requires iOS 12.0 or above, Android 8.0 or above.

 <p>iOS</p>	 <p>Android</p>
<p>https://itunes.apple.com/us/app/feiyu-on/id1170606381?mt=8</p>	<p>https://cdn1.feiyu-tech.com/dl/app/Feiyu_On.apk</p>

7.2.2 Operation of App

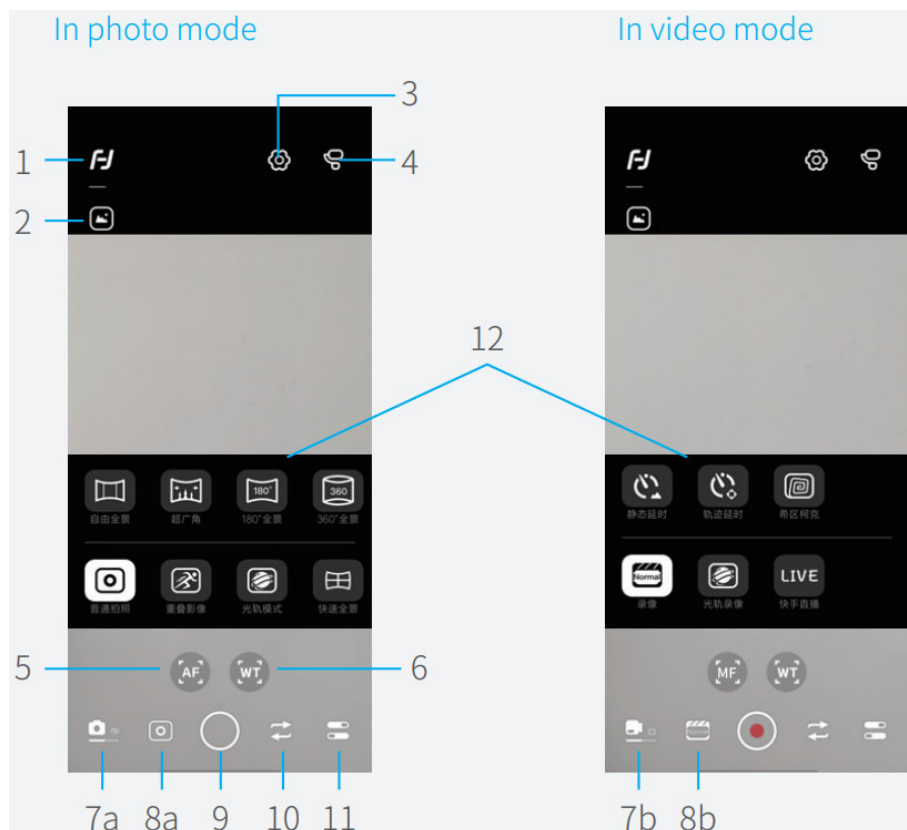
Steps:

1. Enable Bluetooth on the smartphone (Smartphone-Setting-Bluetooth). (Please refer to chapter 7.1)
2. Log in Feiyu ON App (Register for the first time).
3. Install smartphone on gimbal, then turn on gimbal.
4. Search gimbal on App, and tap “FY_VB4_xx” to connect, it will show “connection succeed” after a while.
5. You can control the gimbal via App, including remote control the gimbal to move, switch follow modes and set parameters, etc.

If the connection timeout or fail, please check the Bluetooth connection. Or try to exit and log in the App again.

a. Shooting Interface / Control Interface

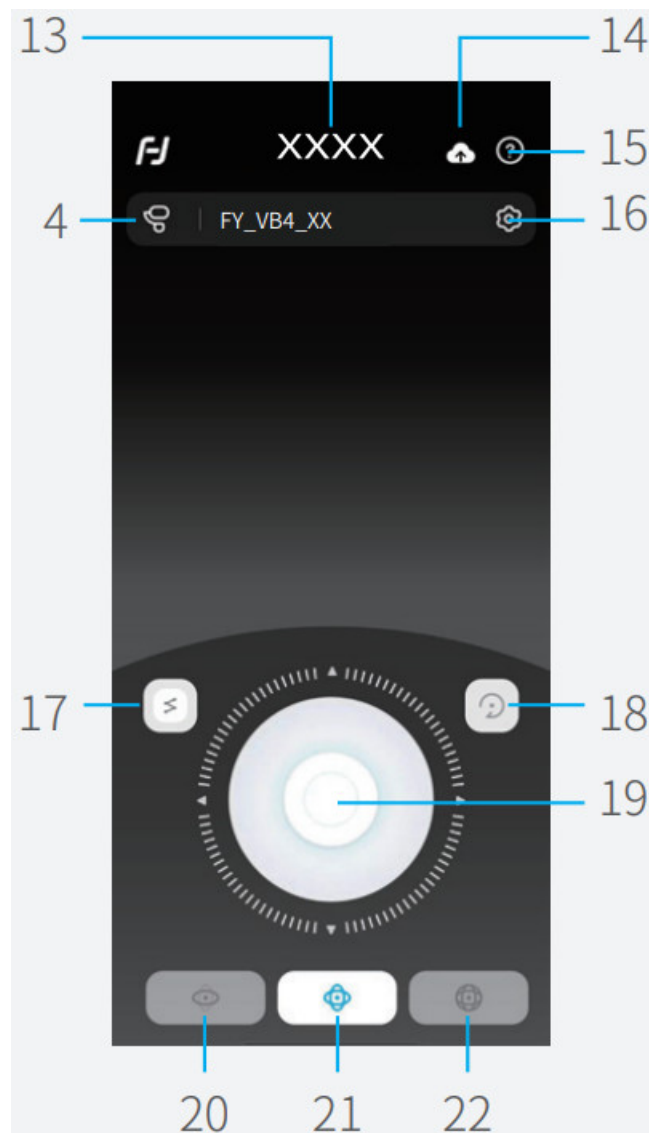
Shooting Interface



1. Homepage
2. Album
3. Setting – Advanced settings

4. Gimbal information
5. Follow focus
6. Zoom
7. a. Photo mode, tap to switch to video mode
b. Video mode, tap to switch to photo mode
8. a. Sub-mode of photo mode, tap to expand submenu
b. Sub-mode of photo mode, tap to expand submenu
9. Shutter
10. Switch between front and rear camera
11. Camera setting
12. Submenu

Control Interface



4. Gimbal information
13. Remote Control
14. Upgrade
15. Tutorial
16. Settings
17. Set waypoints for timelapse
18. Reset
19. Virtual Joystick

- 20. Pan mode
- 21. Follow Mode
- 22. All follow Mode

b. Firmware Upgrade

Upgrade type introductions:

Keyboard firmware update	Fix/update or newly add button/touch screen/interaction functions.
Bluetooth firmware update	Fix/update or newly add Bluetooth functions.
Gimbal firmware update	Fix/update or newly add gimbal control/function/ parameter and etc.

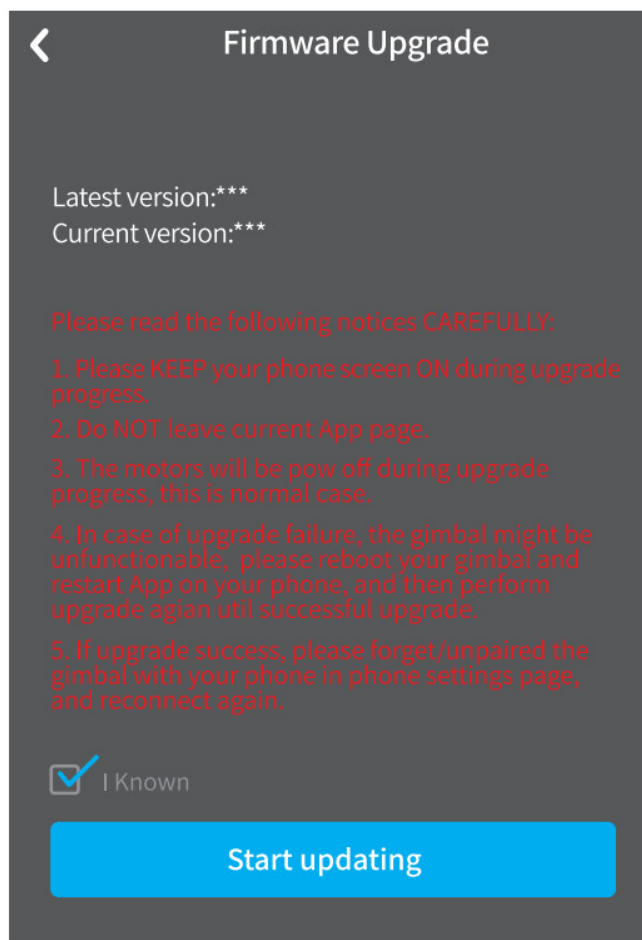
How to update:

- Before starting an update, make sure that the battery level at least medium level.
- Connect VB 4 with Feiyu ON App, you will be prompted if a new firmware is available. Please follow the steps below to update it.

(1) Tap upgrade ICON  on App.

(2) Select upgrade type.

(3) Follow the prompts to upgrade the firmware.



- Do not exit Feiyu ON or run it in the background while updating the firmware.

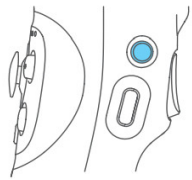
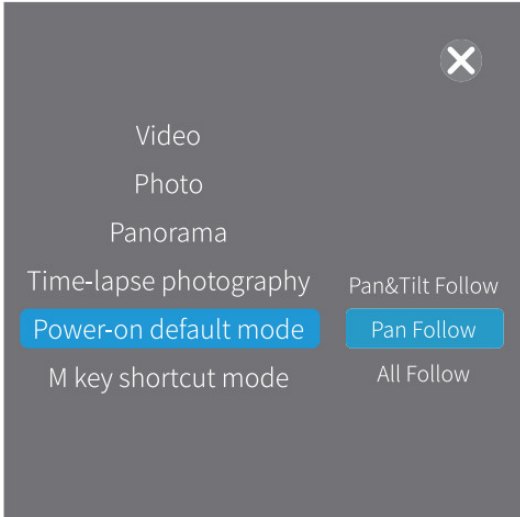
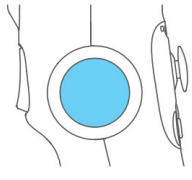
Pay attention to on-screen prompts.

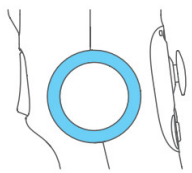
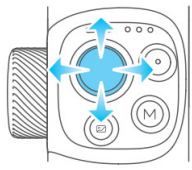
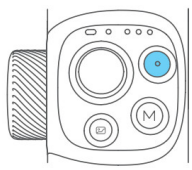
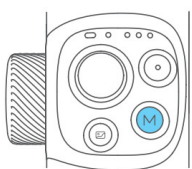
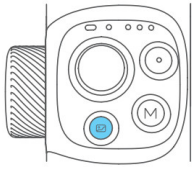
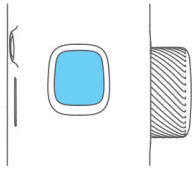
Noted:

Gimbal has an update protection function. When the update fails, restart the gimbal, it will return to the previous firmware. Connect the app and update again to resolve the problem. In addition, parts of the new functions require updating two or more firmwares to take effect. It is recommended to update regularly to keep the firmwares of the gimbal as the latest version.

Common Operation

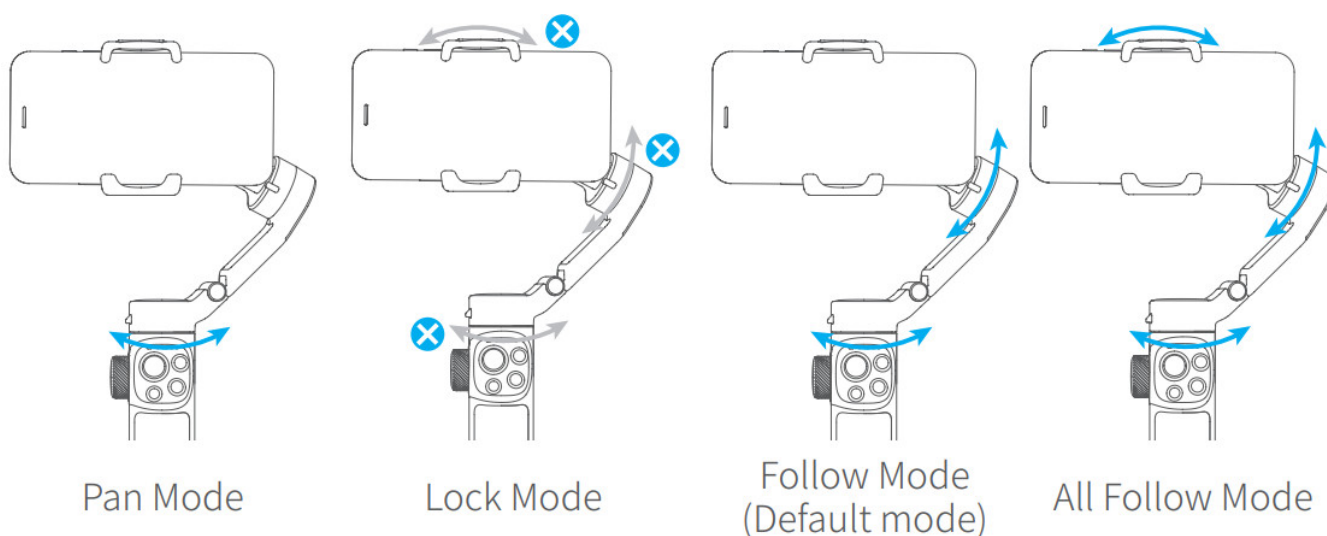
1. **Basic:** VB 4 can achieve those functions after balanced gimbal.
2. **Bluetooth:** New available function which achieved after connected smartphone via Bluetooth with the functions in condition ① still available.
3. **App:** New available function which achieved via Feiyu ON App with the functions in condition ①, ② still available.

Diagram	Button	Condition	Function
	Power button	Basic	Power off: <ul style="list-style-type: none"> • Long press: power on • Single tap: check battery level Power on: <ul style="list-style-type: none"> • Long press: power off • Double tap: enter standby mode (tap again to wake up)
		App	<ul style="list-style-type: none"> • Single tap: enter/quit shortcut menu in App Can choose video, photo, panorama, time-lapse modes can set power on default mode, M key shortcut mode (power-on default mode and M key shortcut mode cannot be set as the same mode), the factory setting of power-on default mode is follow mode, M key shortcut mode is pan mode, single tap function button to switch between these two modes. 
	Knob function switching button	Basic	Switch the control object of dial: <ul style="list-style-type: none"> • Single tap (tone: beep): When control zoom/focus: switch the control object of knob between focus/zoom (default) cyclically When control axes: switch the control object of knob among tilt/pan/roll (default) axis cyclically • Long press (tone: beep beep): switch the dial between control axes/control focus and zoom (default)

	Knob	Basic	<ul style="list-style-type: none"> • Rotate: When control focus/zoom: control focus/zoom (default) When control axes: control the movement of the roll (default)/tilt/pan axis
	Joystick	Basic	Control the movement of the tilt and pan axes
		App	<ul style="list-style-type: none"> • Select setting option • After enter album: move to left to choose previous photo/ video; move to right to choose next photo/ video; move upward to play/pause; move downward to play/pause
	Shutter button	Bluetooth	When original camera App is in photo mode: <ul style="list-style-type: none"> • Press half way: focus • Single tap (fully): take photo When original camera App is in video mode: <ul style="list-style-type: none"> • Single tap (fully): start/stop recording
		App	In photo mode: <ul style="list-style-type: none"> • Press half way: focus • Single tap (fully): take photo In video mode: <ul style="list-style-type: none"> • Press half way: pause/continue recording • Single tap (fully): start/stop recording
	M button	Basic	<ul style="list-style-type: none"> • Single tap: switch among pan follow/ all follow/follow mode (default) cyclically • Double tap: landscape and portrait mode switching
		App	Customize the function of single tap
	Album button	App	Single tap: enter/exit album
	Trigger button	Basic	<ul style="list-style-type: none"> • Long press: lock mode (release it to exit) • Double tap: recenter
		App	<ul style="list-style-type: none"> • Single tap: start AI face tracking • Triple tap: switch front/rear camera • Customize the function of single tap/long press

Mode Introduction

Mode	Description
Pan Mode	The roll and tilt direction are fixed, and the smartphone moves according to the left-right movements of the user's hand.
Lock Mode	The orientation of the camera is fixed.
Follow Mode (Default mode)	The roll direction is fixed, and the smartphone moves according to the left-right movements, up-down movements of the user's hand.
All Follow Mode	The camera moves according to the user's hand.
Reset	Return to pan mode, three axes return to default position.
Manual Lock	Slide the tilt axis to one position for shooting.
Landscape and Portrait Shot	Assist landscape or portrait shooting

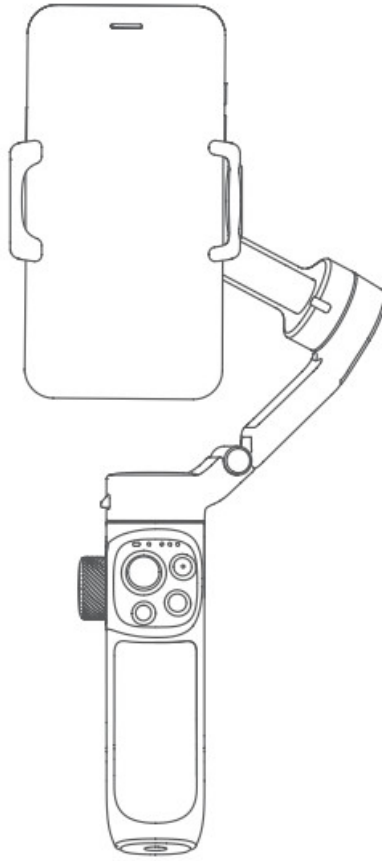


Operation mode

The figures below depict the operation modes when using VB 4 in portrait mode. The same operation modes apply when used in landscape mode.

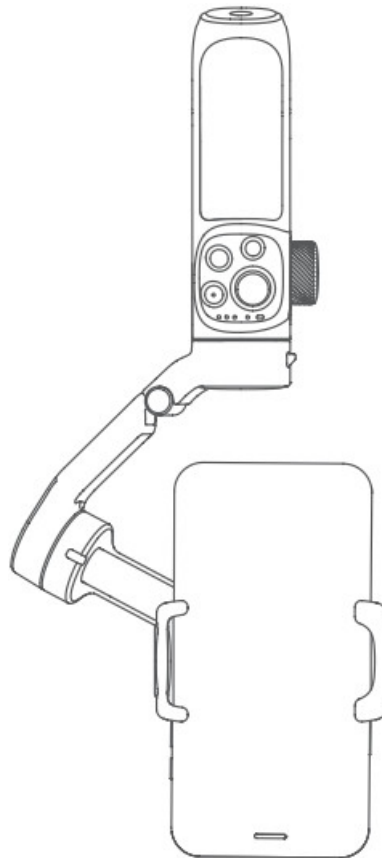
Standard mode (Default):

Double tap trigger button to recenter smartphone.



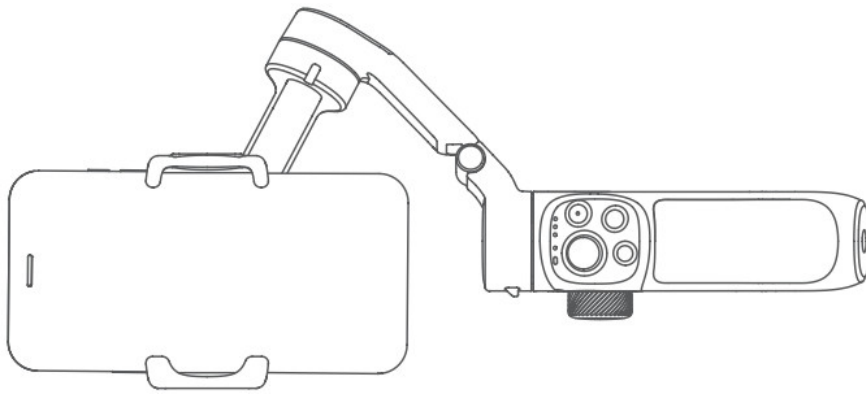
Underslung mode:

Hold gimbal upside down to enter underslung mode. (In which the smartphone can easily capture images from a lower position. User can also hold the tripod to help shooting)



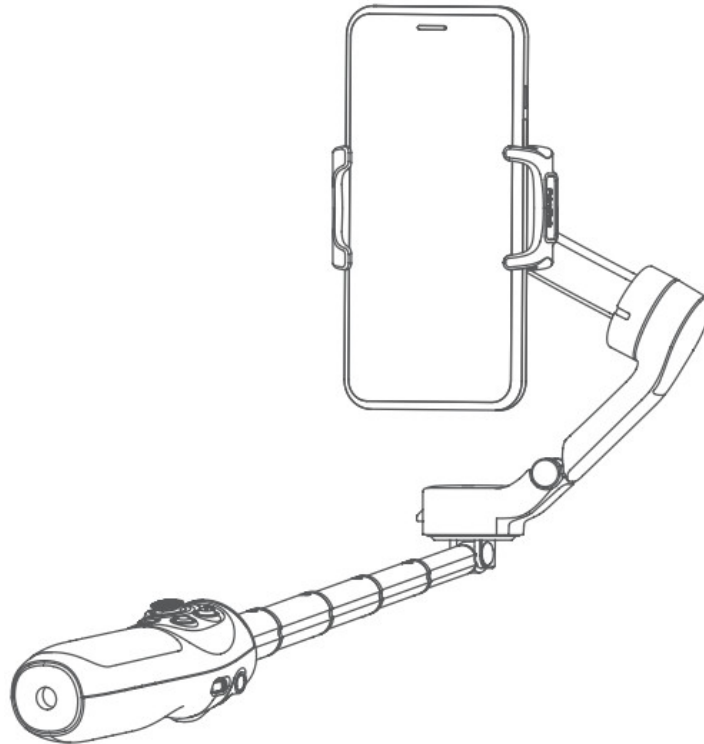
Side grip mode:

Rotate Vimble 3 to the right or left by 90° to make smartphone be horizontal to the ground.

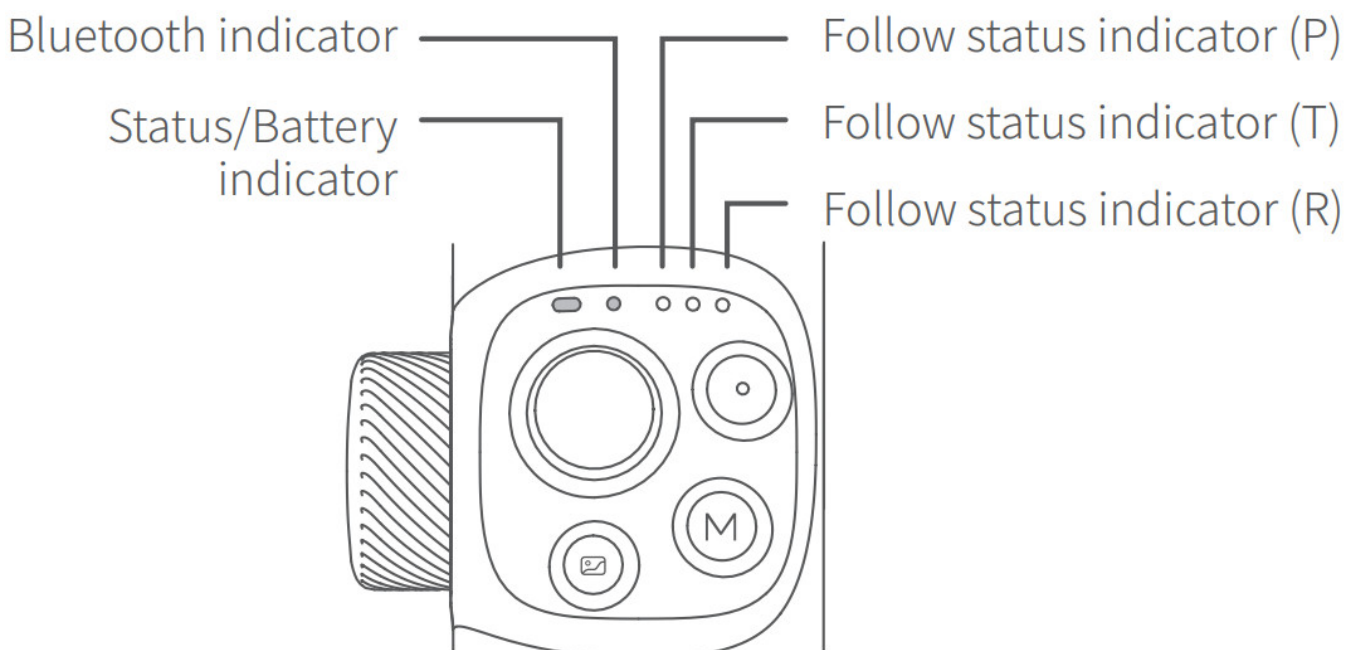


Low position mode:

Extend the built-in extendable rod and adjust the angle as shown to enter low position mode. Use low position mode to shoot from a low angle.



Indicator



11.1 Status/Battery indicator

Indicator while charging:

Status/Battery indicator	Descriptions
Green light stays on	Charge completed
Yellow light stays on	Charging
Flashes yellow and red alternately	Low power
Red light keeps flashing quickly	Low power, will auto power off
Breathing light (Yellow)	Standby mode

Indicator while using:

Status/Battery indicator	Descriptions
Green light stays on	High level of battery
Blue light stays on	Medium level of battery
Red light keeps flashing slowly	Low power
Red light keeps flashing quickly	Low power, will auto power off
Breathing light (Green)	Standby mode

11.2 Bluetooth indicator

Bluetooth indicator	Descriptions
Blue light stays on	Bluetooth connected
Blue light flash	Bluetooth disconnected/ Bluetooth connected, App disconnected
Blue light keeps flashing quickly	Reset Bluetooth connection of gimbal

11.3 Follow status indicator







Follow status indicator	Descriptions
White lights turn on in turn then grow solid white	Powering on
	Pan follow
	Follow mode (default)
	All follow mode
	Lock mode

Figure:  Light on  Light off

Protection mechanism

State	Status
Battery is too low	Gimbal power off after alarm sound
Temperature is too high	Gimbal enter standby mode after alarm sound, and send message to App
Power on gimbal without load	
Overload	
Software conflict	Gimbal power off after alarm sound, and send message to App
Remove smartphone after powered on gimbal	Gimbal enter standby mode with green breathing light, and after leaving gimbal in standby mode for 10 minutes, it will auto power off
Power on gimbal when lie it down	
Others	Gimbal power off after alarm sound, and send message to App

Gimbal Initialization

Initialization the gimbal when:

1. The camera is not in level.
2. Not use for a long period of time.
3. The ambient temperature changes abruptly.

Method:

Method 1: Initialize via App (Reset gimbal parameters).

Method 2: Press album button and mode button together for 1 second;
Please refer to the form in chapter 11.1 in P16 to check the indicator status.

Note: if the initialization is unsuccessful for a long time, please restart the gimbal and retry.

Specifications

Product name: Feiyu VB 4 3-Axis Handheld Gimbal for Smartphone

Product model: FeiyuVB4

Max. Tilt Range: $-20^{\circ} \sim +35^{\circ}$ ($\pm 3^{\circ}$)

Max. Roll Range: $-60^{\circ} \sim +60^{\circ}$ ($\pm 3^{\circ}$)

Max. Pan Range: $-80^{\circ} \sim +185^{\circ}$ ($\pm 3^{\circ}$)

Size: About 98.5×159.5×52.8mm (folded)

Net gimbal Weight: About 335g (not including tripod)

Battery: 950mAh

Charging time: ≤ 2.5 h

Battery Life: ≤ 6.5 h (test in lab environment with 205g load)

Payload Capability: ≤ 260 g (after balanced)

Adapter smartphones: iPhone & Android phones (the width of the phone ≤ 88 mm)

Packing list:

Main body×1, Tripod×1, USB-C cable×1, Portable bag×1, Manual×1

Notice:

1. Make sure motor spinning is not blocked by external force when the product is power on.
2. The product DO NOT contact water or other liquid if the product is not mark waterproof or splash-proof.
Waterproof and splash-proof product DO NOT contact sea water or other corrosive liquid.
3. DO NOT disassembly the product except marked detachable. It need send to FeiyuTech after-sales or authorized service center to fix it if you accidently disassembly and cause abnormal work. The relevant costs are borne by user.
4. Prolonged continuous operation may cause the product surface temperature to rise, please operate carefully.
5. DO NOT drop or strike the product. If the product is abnormal, contact FeiyuTech after-sales support.

Storage and Maintenance:

1. Keep the product out of the reach of children and pets.
2. DO NOT leave the product near heat sources such as a furnace or heater. DO NOT leave the product inside of a vehicle on hot days.
3. Please storage the product in dry environment.
4. DO NOT overcharge or overuse the battery, otherwise it will cause damage to the battery core.
5. Never use the product when the temperature is too high or too low.

Official Social Media



Website

<http://www.feiyu-tech.com/>



Facebook

<https://www.facebook.com/feiyutech>



Youtube

<https://www.youtube.com/user/FeiyuChannel>



Twitter

<http://www.twitter.com/feiyutech>



Instagram

<https://www.instagram.com/FeiyuTech>

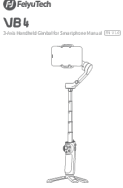


Guilin Feiyu Technology Incorporated Company

www.feiyu-tech.cn | support@feiyu-tech.com | +86 773-2320865

This document is subject to change without notice.

Documents / Resources

 The image shows the FeiyuTech logo and the text 'VB4' above a small illustration of the handheld gimbal device.	<p>FeiyuTech VB4 3-Axis Handheld Gimbal for Smartphone [pdf] User Manual VB4, VB4 3-Axis Handheld Gimbal for Smartphone, 3-Axis Handheld Gimbal for Smartphone, Handheld Gimbal for Smartphone, Gimbal for Smartphone, Smartphone</p>
---	---

[Manuals+](#).