



FEIYUTECH SPG C 3 Axis Stabilized Handheld Gimbal for Smartphone Instruction Manual

[Home](#) » [FeiyuTech](#) » FEIYUTECH SPG C 3 Axis Stabilized Handheld Gimbal for Smartphone Instruction Manual



Contents

- [1 FEIYUTECH SPG C 3 Axis Stabilized Handheld Gimbal for Smartphone](#)
- [2 Product Overview](#)
- [3 Package List](#)
- [4 Charging](#)
- [5 Balance Adjustment](#)
- [6 Power on / off](#)
- [7 Firmware Upgrade](#)
- [8 Gimbal initialization](#)
- [9 Parameters](#)
- [10 Documents / Resources](#)
 - [10.1 References](#)

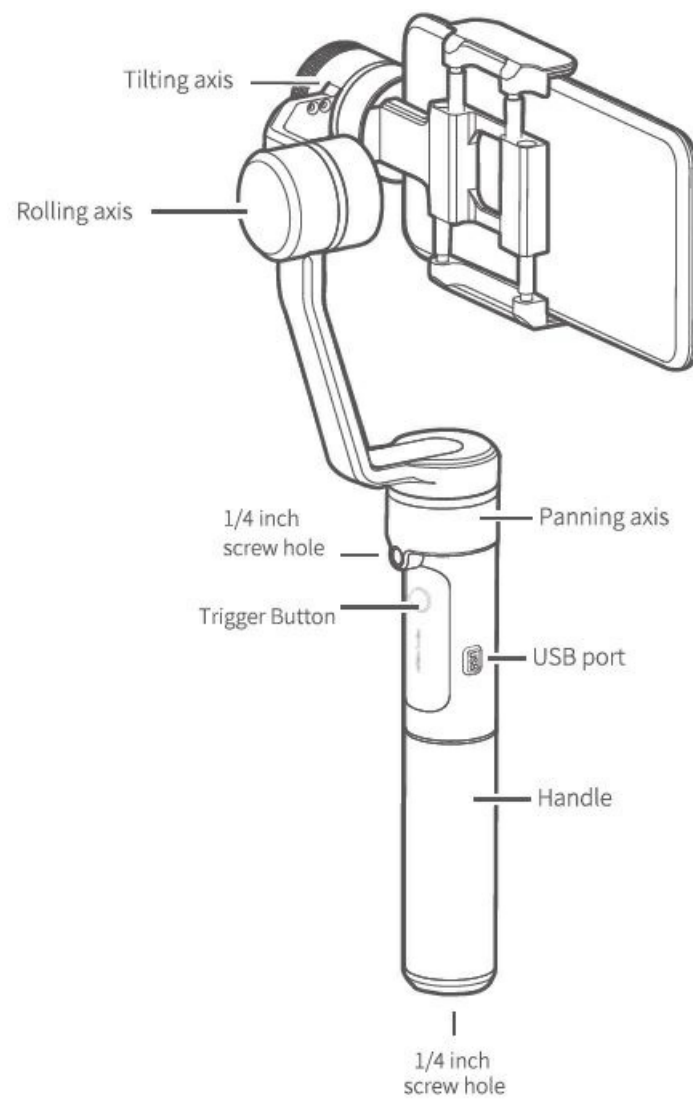


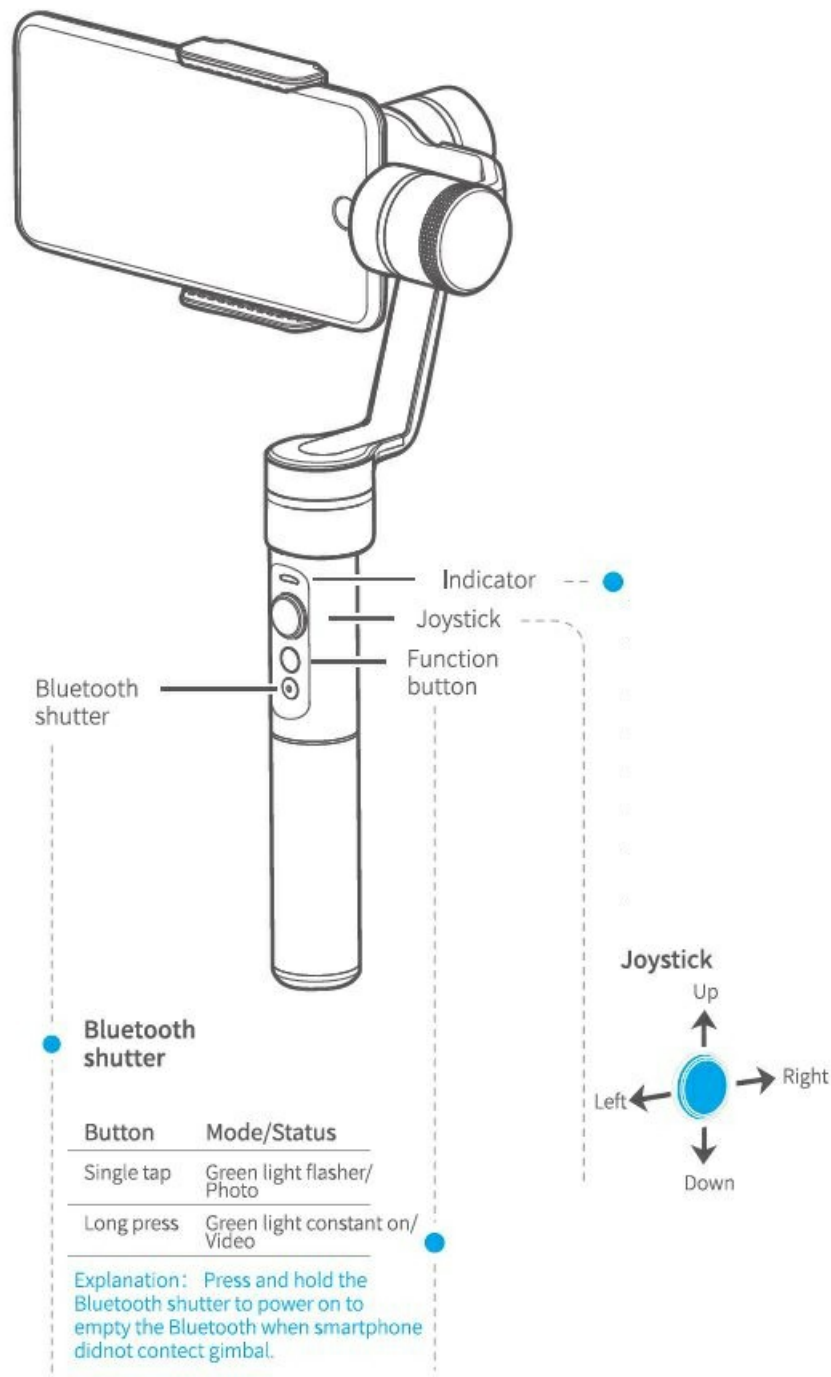
FEIYUTECH SPG C 3 Axis Stabilized Handheld Gimbal for Smartphone



Product Overview

The showing smartphone is only for reference.

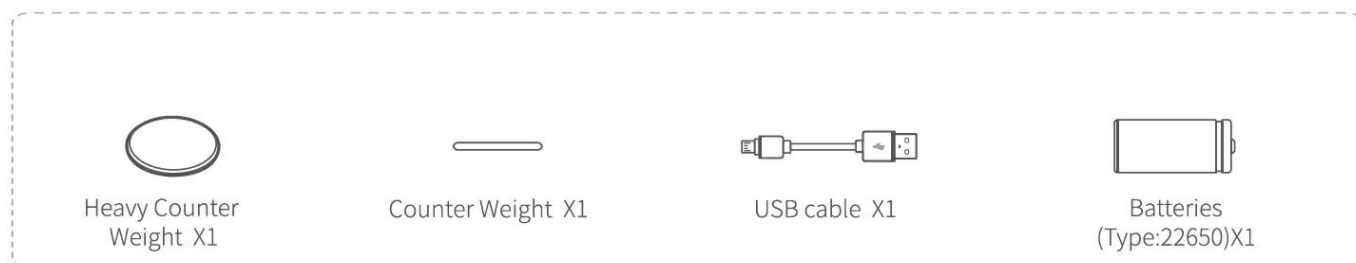




Indicator Status Mode / Status

- Blue light flashes once the Panning mode
- Blue light flashes twice Panning and Tilting mode
- Blue light flashes three times Standby
- Blue light constant on Lock mode / Initializing
- Blue light keeps flashing Initialization failure / Malfunction
- Red light flashes three times Low battery
- Red light keeps flashing Switching to standby mode/ Gimbal will power off

Package List



User Guide

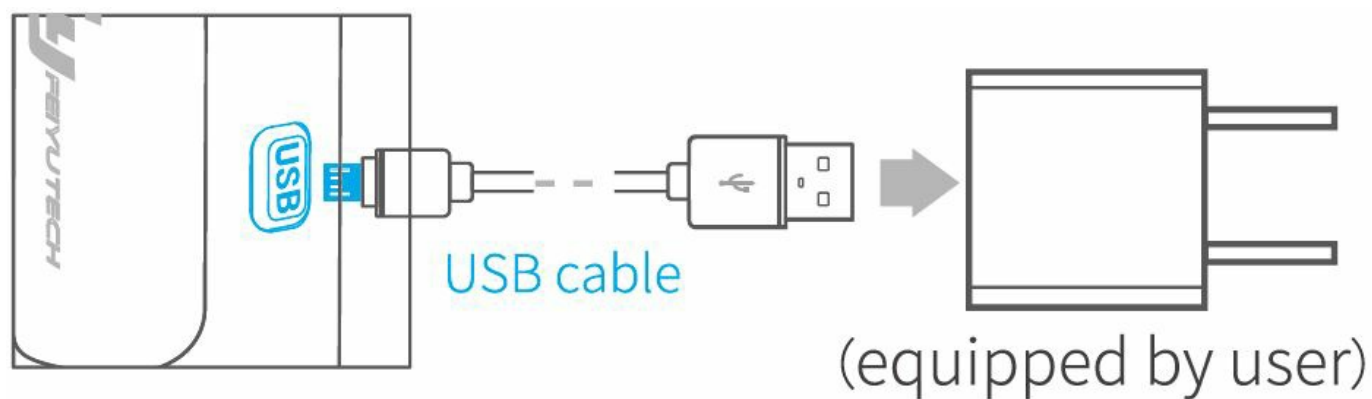
Attention!

1. Please install the smartphone before powering on the gimbal
2. When not in use, turn off the gimbal and then remove the smartphone

Charging

Please make sure the battery is fully charged before you use the gimbal for the first time.

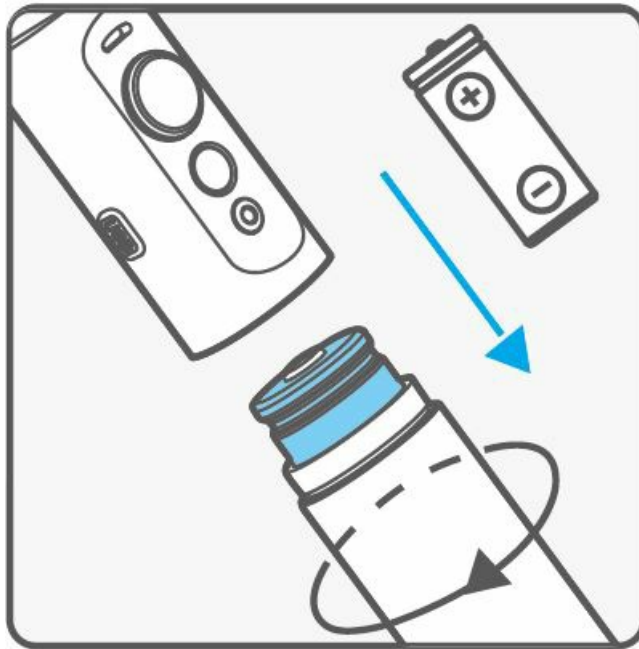
Option 1: Charge with a USB cable.



Option 2: remove the battery and charge the battery with a charger (equipped by the user).

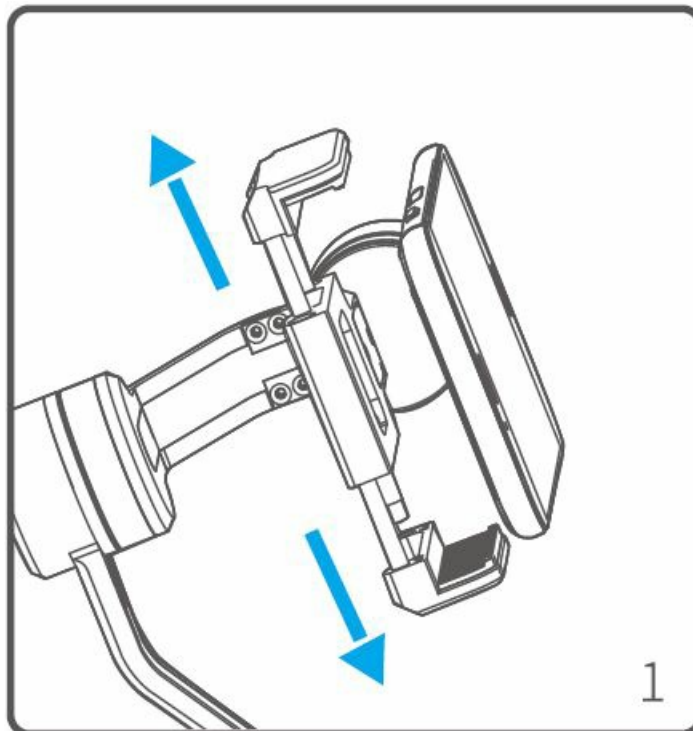
Install the battery

- Remove the handle and insert one 22650 battery into it.

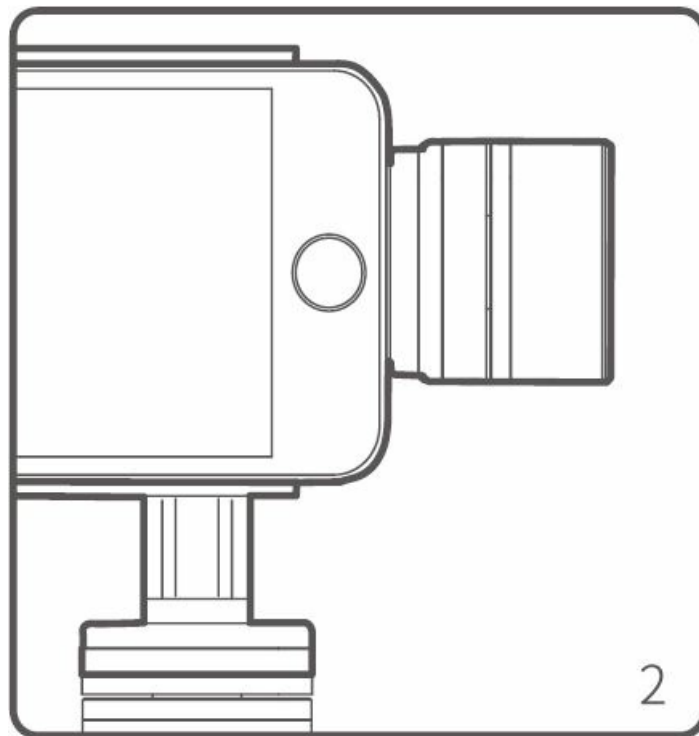


Install the smartphone

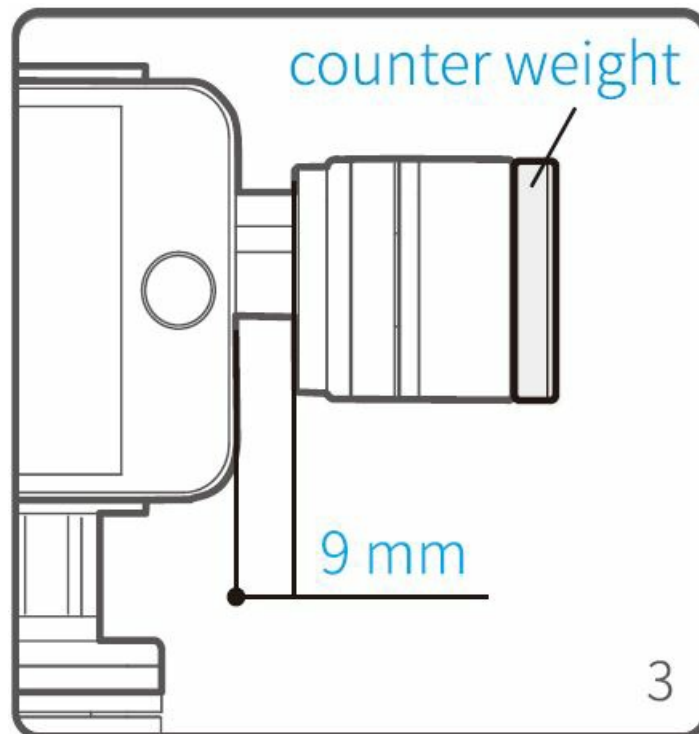
- Attach the smartphone with the quick-release adapter, and ensure it is secure.



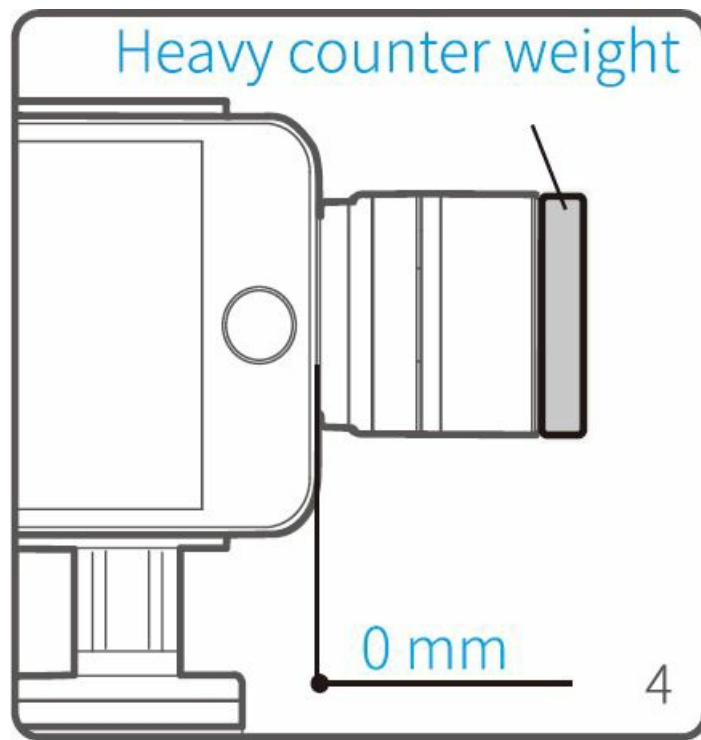
- Without a counterweight Phone weight <165g Such as an iPhone 5 / 5s



- With counterweight $180\text{g} < \text{Phone weight} < 194\text{g}$ Such as: iPhone 6s / 6



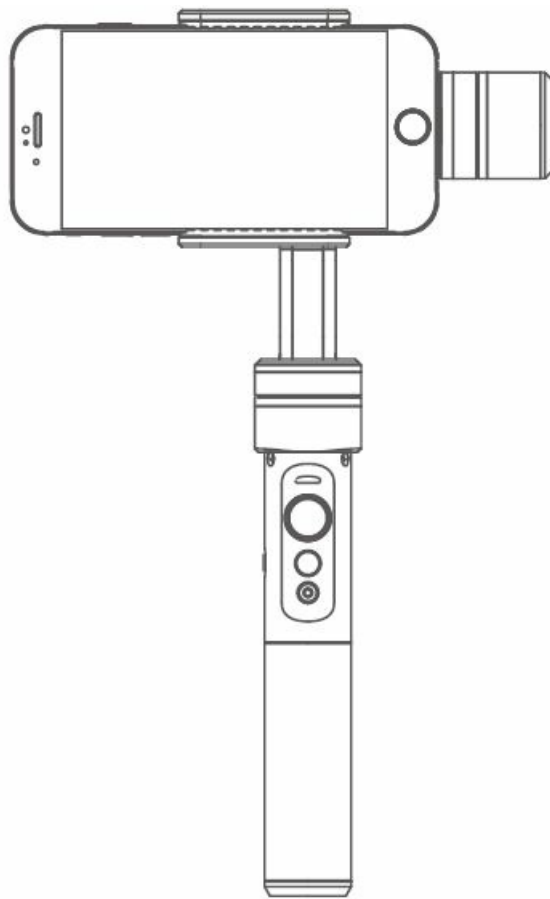
- With a Heavy counter a Phone weight $> 194\text{g}$ Such as iPhone 7/7 Plus / 6 Plus



Tips: Please take off the protective casing of the smartphone before installation.

- If it is not balanced after you finish the above operation instructions, please follow step (4) to balance it again.

Balance Adjustment



Best Balance

Power on / off

Power on: Press and hold the function button until the green light is on.

Power off: Press and hold the function button until the red light changes from quick flashing to always on.

Attention: Turn the gimbal on after the phone has been secured properly.



- In case of a low battery, the indicator will flash red 3 times every 5 seconds. Please charge SPG c or replace the battery.

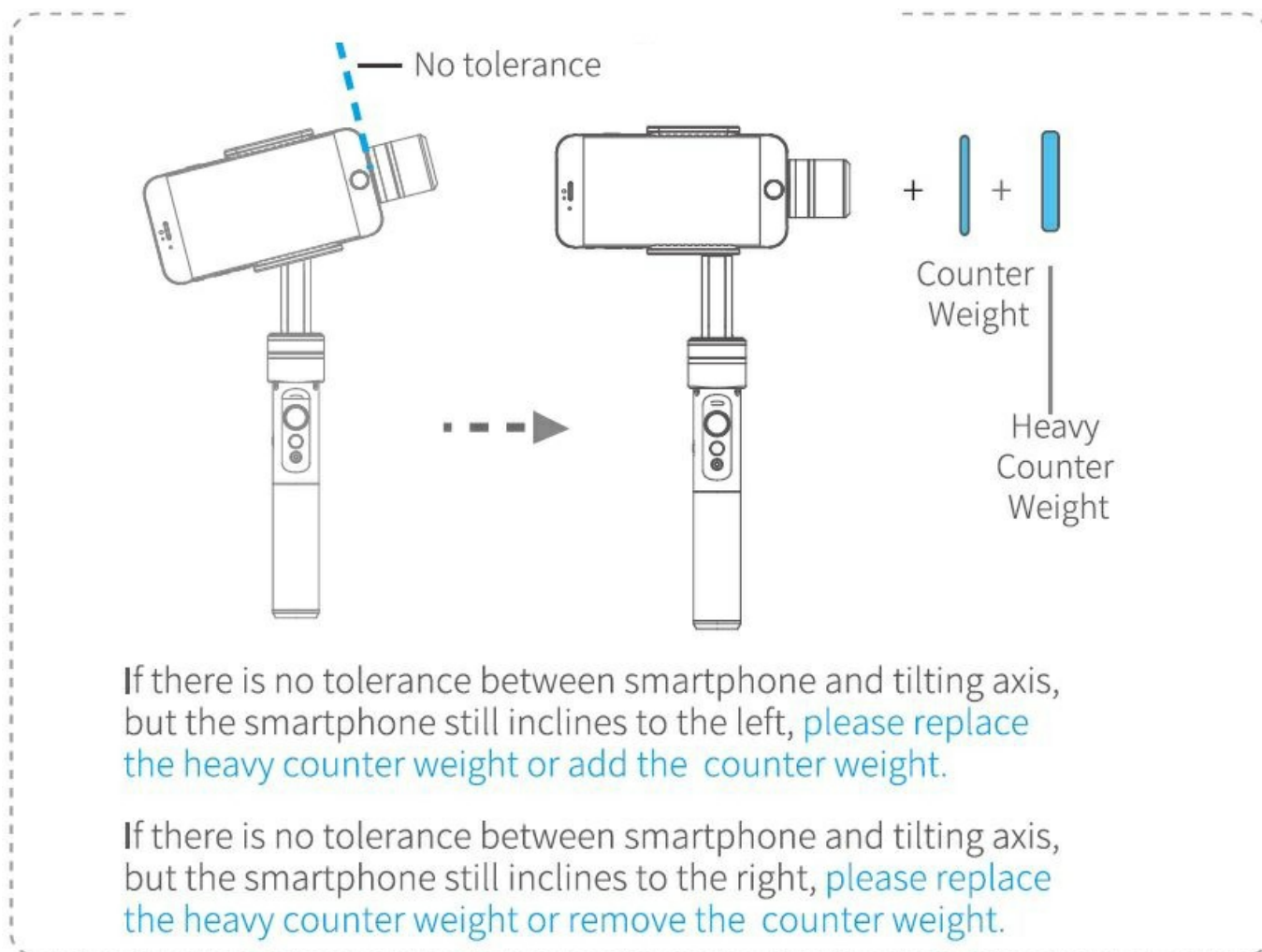
Modes/ Functions

- Working Modes

Panning Mode

- Tilting and rolling direction are fixed, and the camera lens moves according to the hand * Boot default mode: Panning mode

How to balance adjustment



Download and connect app

Download "Feiyu ON" and install it

1. iOS version:

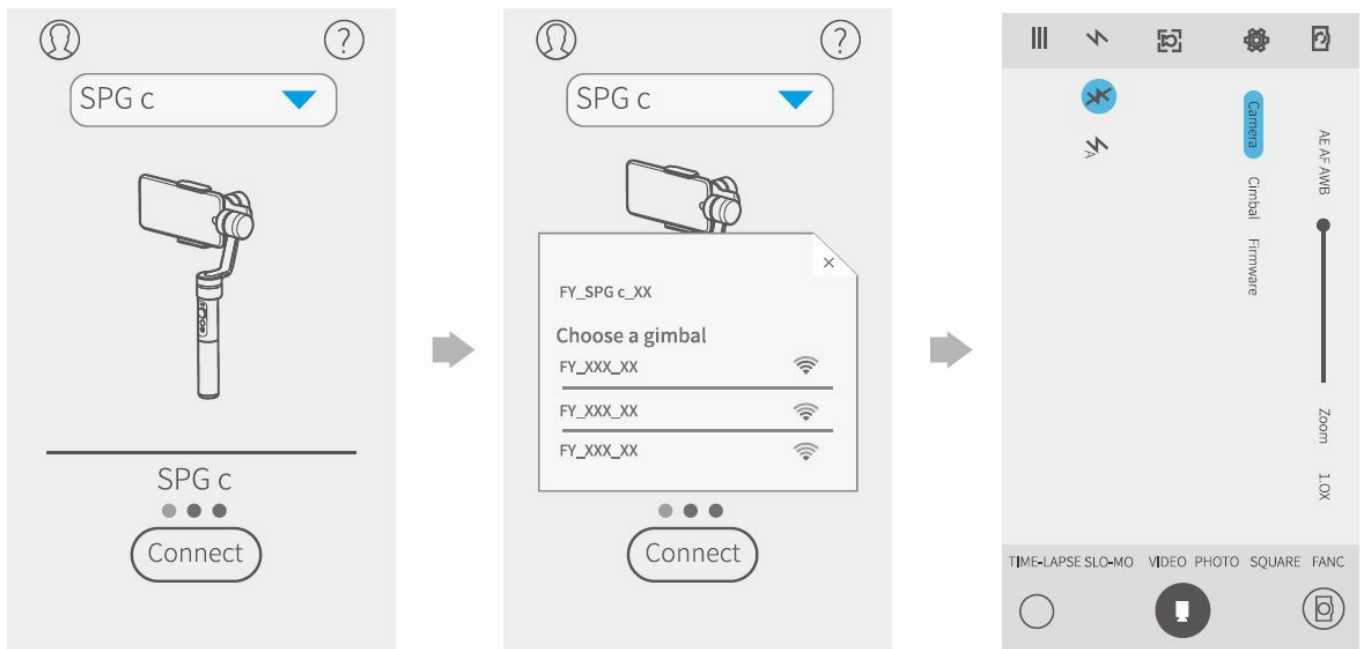


2. Android version:



ConnectingApp

- Start the App on your smartphone, and follow the instructions to connect the smartphone with the gimbal via Bluetooth.



Tips: the shutter button is only functional when the gimbal is connected to a smartphone App.

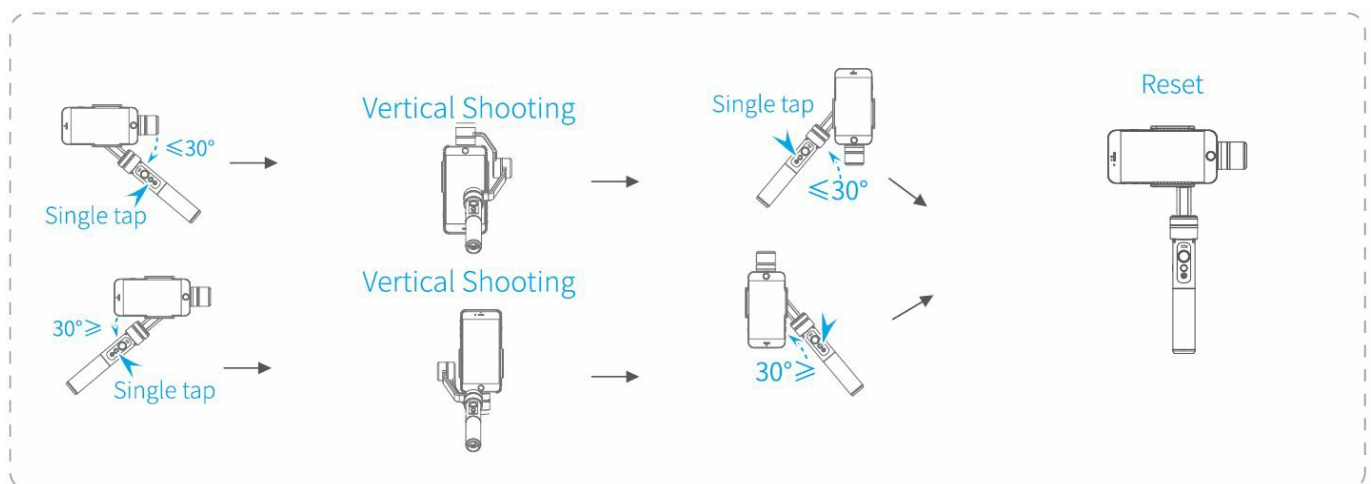
Panning and Tilting Mode

- The rolling direction is fixed, and the camera lens moves according to the hand movement of the user.

Lock Mode

- The orientation of the camera is fixed.

Vertical Shooting Mode



Mode / Function Operation Instructions

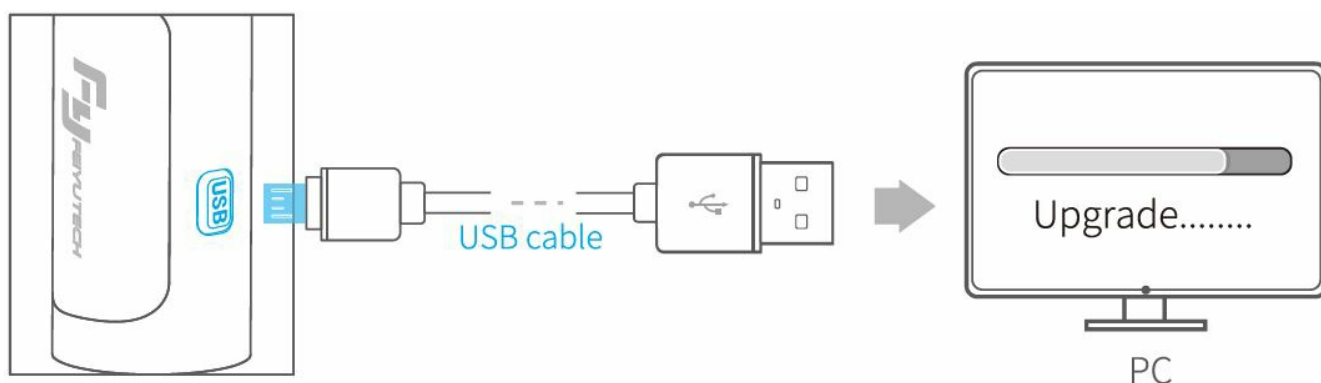
Function Button	Function	Explanation
Single tap	Panning Mode / Lock Mode	Single tap to switch between panning mode and lock mode
Double tap	Panning and Tilting Mode	Under panning and tilting mode, single tap to switch to lock mode
Triple tap	Rotate 180° in horizontal	Make the lens rotate 180 °
Quadruple tap	Reset	Reset the tilting axis of the gimbal to initial orientation and initial mode
Long press until the red light flashes quickly	Standby	Single tap again to awake the gimbal, or triple tap to initialize the gimbal

Trigger Button	Function	Explanation
Long press	Lock Mode	Enter the lock mode, release it to return to before mode
Long press + joystick up and down	Control the App Lens Zoom	Joystick up and down to control the App lens zoom; left and right to control the panning
Double tap	Panning Reset	Restore the initial follow state of the panning

Firmware Upgrade

- Option 1:** Connect the gimbal to the PC via a micro USB cable, and then upgrade the firmware.

Please visit the official website www.feiyu-tech.com to download the relevant programs for upgrading, including USB driver, firmware upgrade software, and product firmware, and install the relevant software, and decompress the firmware files for standby application.



- Option 2:** Connect the gimbal with a smartphone via bluetooth, and then upgrade the firmware.



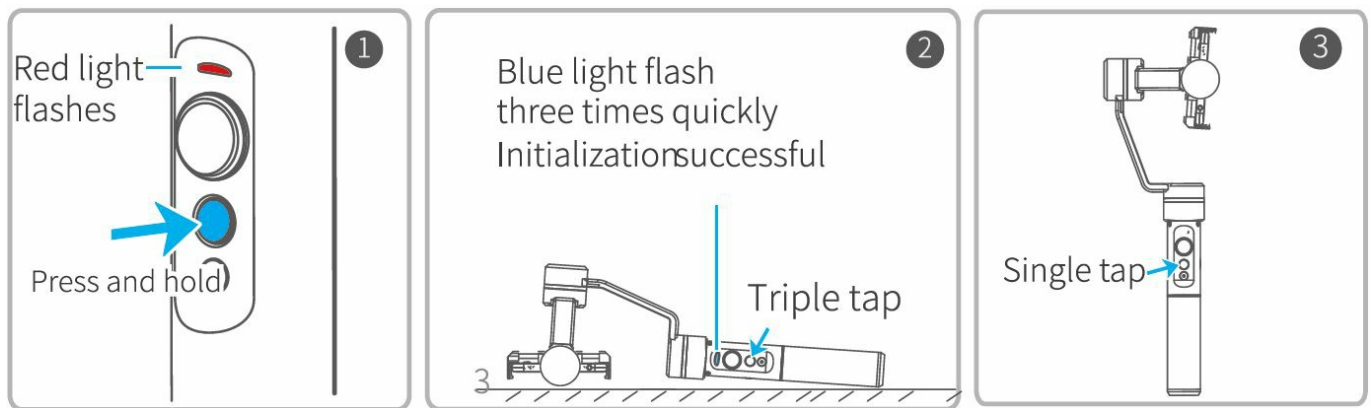
Gimbal initialization

You can initialize your gimbal when:

- when the camera is not level
- if not used for a long period of time

3. in case of extreme temperature variations

Adjusting steps



1. Long press the function button and release it until the red light flashes, the gimbal enters the standby mode, and the blue light will flash 3 times periodically.
2. Lay the gimbal on a static flat surface and triple-tap the function button. Initialization is successful when the blue light changes from constant to flashing 3 times periodically.
3. Click again to wake up the gimbal.

Parameters

- **Titling Angle:** 320°
- **Rolling Angle:** 320°
- **Panning Angle:** 360°
- **Titling Increments:** min 2% max 75%
- **Panning Increments:** min 3% max 150%
- **Usage time:** 7 Hours
- **Adaption:** iPhone series / HUAWEI P9 / HUAWEI P9 Plus / Mi 5 / MEIZU MX6 / SAMSUNG NOTE 5 / 57 or other smartphones with similar dimensions
- **Weight:** 355g (not including battery and smartphone)

DISCLAIMER

- Prohibit any user for any illegal purpose. Users will be responsible for all behaviors of purchase and use products.
- The Company assumes no liability for any risks related to or resulting from the debugging and use of this product (including direct, indirect, or third-party losses).
- For any unknown sources of use, we will not be at any services.
- The updating and changes of product firmware and program may cause changes in function descriptions in this user manual, please read the instructions carefully before upgrading the firmware and use the corresponding user manual.
- You can get the latest user manual from the official website: www.feiyu-tech.com.
- Feiyu Tech reserves the right to amend this manual and the terms and conditions of use of the product at any

time.

- Due to software and hardware improvements, your actual product might differ from the descriptions and pictures in this user manual. You can get the latest user manual from the official website.

Attention



- Please correctly assemble the gimbal in accordance with the diagram.
- Please install the iPhone before powering on the gimbal.
- When the gimbal is not in use or placed on the table, please ensure it is powered off.

Guilin FeiYu Technology Incorporated Company

- Website: www.feiyu-tech.com.
- E-mail: service@feiyu-tech.com.
- Tel: +86 (0)773 2320866



Documents / Resources

  <small>3-Axis Stabilized Handheld Gimbal for Smartphone</small> <small>Guilin FeiYu Technology Incorporated Company (Guangdong, China)</small>	<p>FEIYUTECH SPG C 3 Axis Stabilized Handheld Gimbal for Smartphone [pdf] Instruction Manual</p> <p>SPG C, SPG C 3 Axis Stabilized Handheld Gimbal for Smartphone, 3 Axis Stabilized Handheld Gimbal for Smartphone, Stabilized Handheld Gimbal for Smartphone, Handheld Gimbal for Smartphone, Smartphone</p>
---------------------------------------------------------------------------------------------------------------------------------------------------------------------------------------------------------------------------------------------------------------------------------------------------------------------------------------------	---------------------------------------------------------------------------------------------------------------------------------------------------------------------------------------------------------------------------------------------------------------------------------------------------------------------------------------

References

- ^{MH} [Search - Manual-Hub.com](#)