



FeiyuTech SCORP-Mini P 3 Axis Smartphone Gimbal Stabilizer User Guide

[Home](#) » [FeiyuTech](#) » FeiyuTech SCORP-Mini P 3 Axis Smartphone Gimbal Stabilizer User Guide 

Contents

- 1 FeiyuTech SCORP-Mini P 3 Axis Smartphone Gimbal Stabilizer User Guide**
 - 1.1 Overview**
 - 1.1.1 User manual
 - 1.1.2 Download the App
 - 1.2 Getting started**
 - 1.2.1 Charging
 - 1.2.2 Adjust the gimbal to gimbal balancing position
 - 1.3 Mounting the Smartphone**
 - 1.4 Gimbal Balancing**
 - 1.5 Operation**
 - 1.5.1 Power ON/ OFF
 - 1.5.2 Follow mode introduction
 - 1.5.3 Button operation
 - 1.6 Indicator**
 - 1.6.1 Bluetooth indicator instruction
 - 1.6.2 Follow status indicator instruction
 - 1.6.3 Other status indicator instruction
 - 1.6.4 Battery indicator instruction
 - 1.7 Specifications**
 - 1.8 Packing List**
- 2 Documents / Resources**
 - 2.1 References
- 3 Related Posts**

FeiyuTech SCORP-Mini P 3 Axis Smartphone Gimbal Stabilizer User Guide

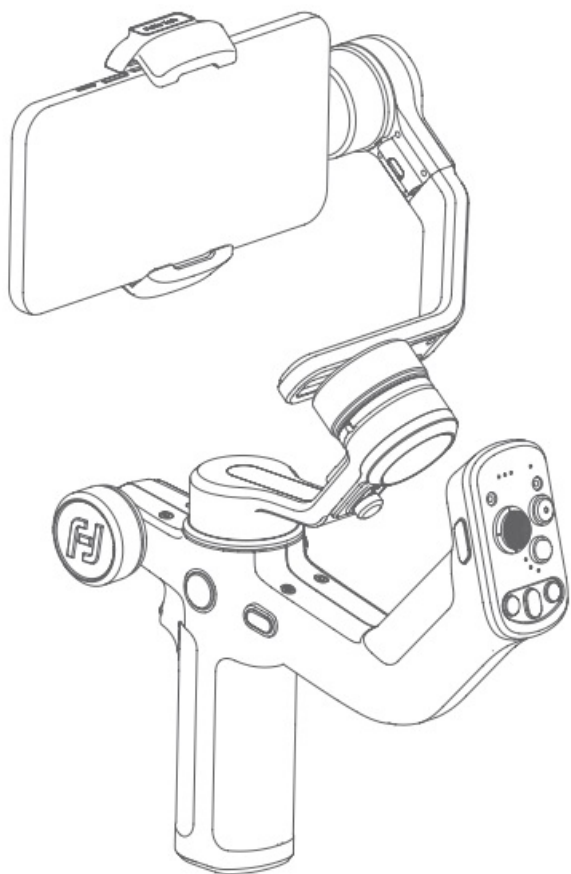


SCORP

Mini P

Quick Start Guide

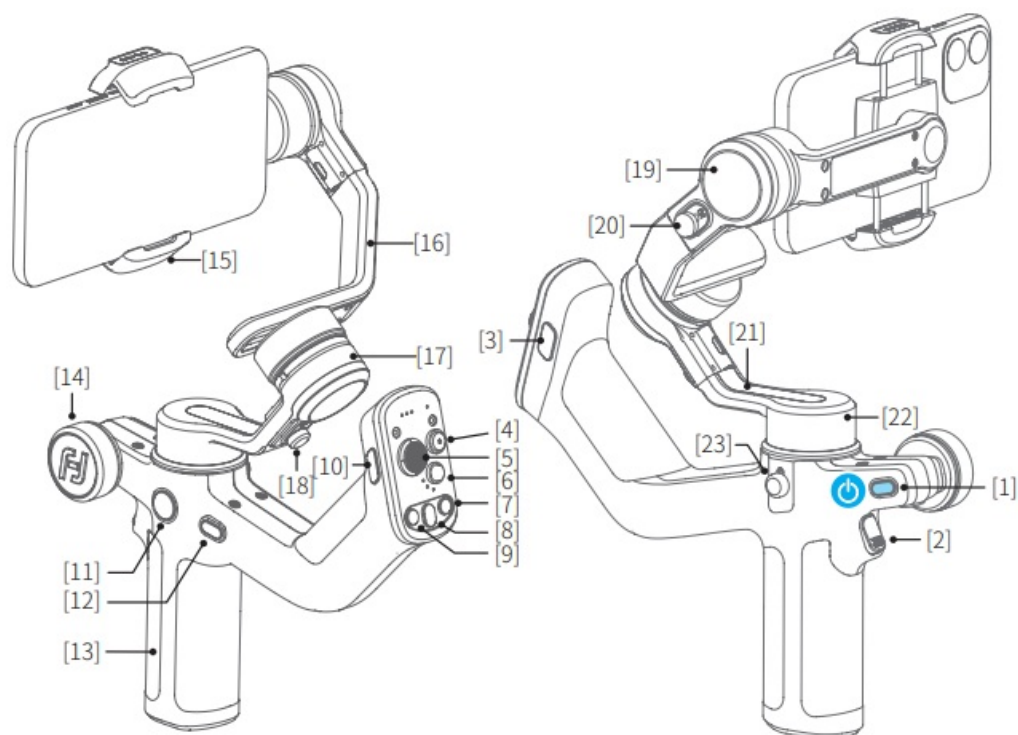
V1.0.0



Quick Start Guide

Overview

* Not include smartphone.



1. Power button
2. Trigger button
3. F2 button
4. Shutter button
5. Joystick
6. Mode button
7. R button
8. Auto rotation button
9. L button
10. F1 button
11. Knob function switching button
12. FPV button
13. Handle
14. Multifunction knob
15. Smartphone holder
16. Cross arm
17. Roll axis
18. Roll lock
19. Tilt axis
20. Tilt lock
21. Cross arm
22. Pan axis
23. Pan lock

Scan the QR code to get the latest user manual or download it from the official website.



<https://www.feiyu-tech.com/feiyu-scorp-mini-p/>

Download the App

Scan the QR code to download the App, or search for “**Feiyu ON**” in the App Store or Google Play.

* Requires iOS 9.0 or above, Android 6.0 or above.



iOS

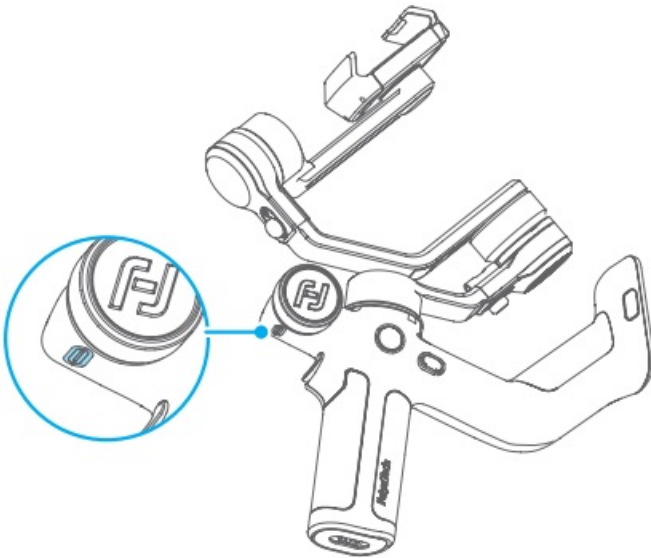


Android

Getting started

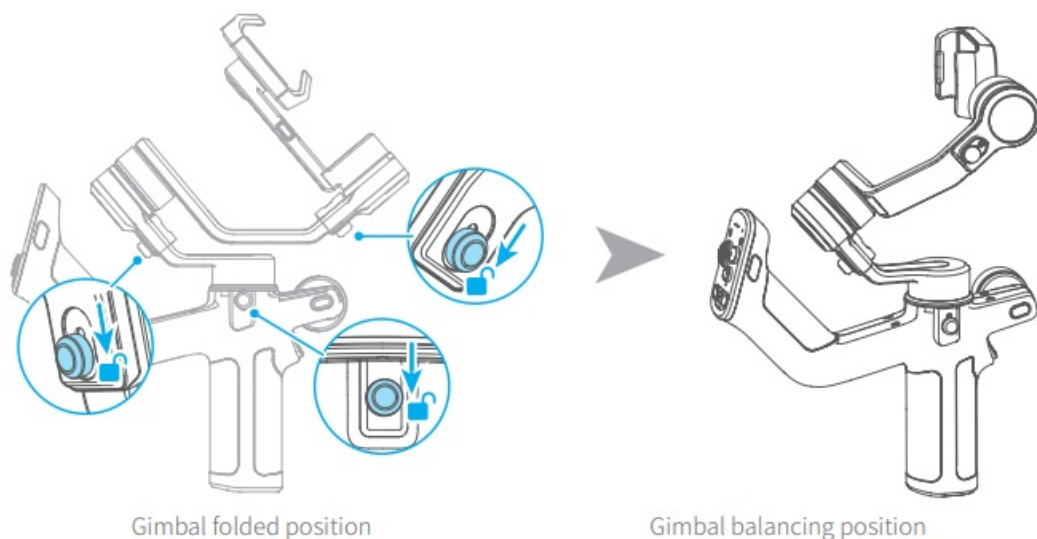
Charging

Please fully charge the battery before power on the gimbal for the first time. Charging with USB-C cable, supports quick charge.



Adjust the gimbal to gimbal balancing position

The gimbal is folded by default, please unlock all the three axes and adjust the gimbal to gimbal balancing position, and then lock the three axes.



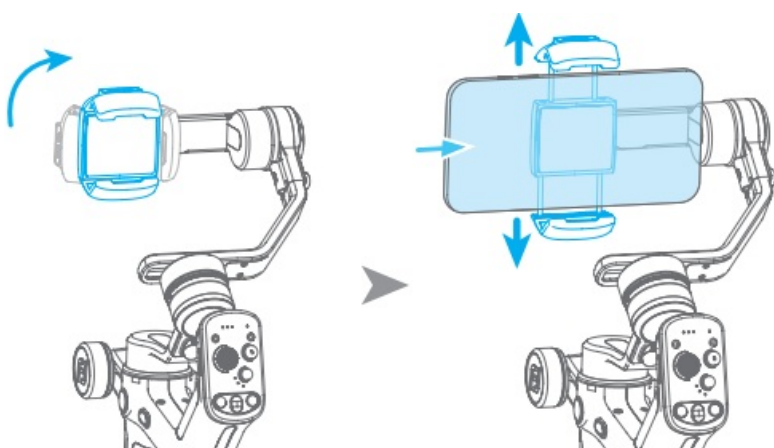
Mounting the Smartphone

Make sure you have completed all the steps which mentioned in “chapter 2. Getting started” and the gimbal is adjusted to **gimbal balancing position**. It is recommended to remove the smartphone case before mounting the smartphone.

Take horizontal mounting as an example:

1. Power off the gimbal or enter sleep mode first, then rotate the smartphone holder to make it vertical to prepare for landscape shooting.
2. Extend the smartphone holder, and put your smartphone in, keep the smartphone holder in center.

Note: before switching the mounting direction, the gimbal required to be off or in sleep mode.



Gimbal Balancing

Please balance the gimbal before powering it on. Before balance the gimbal, please power off it or enter sleep mode.

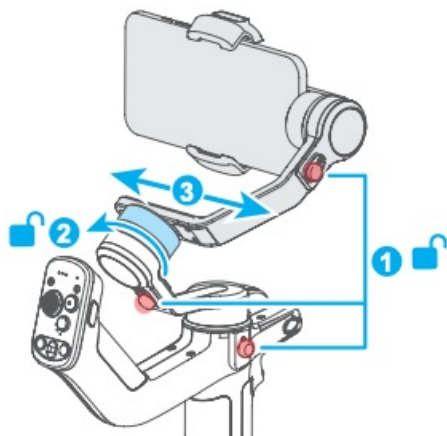
1. Unlock the three axis locks ① , observe the tilt direction of the mobile phone.
2. If the phone is tilted to one end, it means that the center of gravity is toward this end, and the fixing knob needs to be loosened ② , and then move the cross arm in the opposite direction ③ , until the cross



Tutorial Videos

arm maintains a horizontal balance.

3. tighten the fixing knob ② .

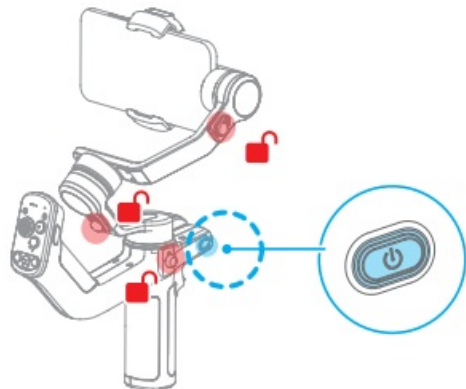


Operation

Power ON/ OFF

Before power on the gimbal, make sure you have balanced gimbal, and unlocked all the three axes. If you haven't unlocked all the 3 axes, gimbal will enter sleep mode to protect itself. Please single tap power button to wake up gimbal after unlocked all the 3 axes.

Long press the power button and release it when you hear the beep sound to power on/ off.



Follow mode introduction

PF: Pan follow, only the pan axis follows the movement of user's hand.

PTF: Pan and tilt follow, where both the pan and tilt axes follow the movement of user's hand, but roll axis does not.

FPV: Pan, tilt and roll follow, where all 3 axes follow the movement of user's hand.

Lock: All 3 axes do not follow the movement of user's hand, gimbal keeps the direction of the camera fixed.

FFW: Flash follow, where all 3 axes follow the movement of user's hand in high follow speed.

Button operation

– More button function introductions please refer to the user manual.

Indicator

[1] Battery indicator A/B/C

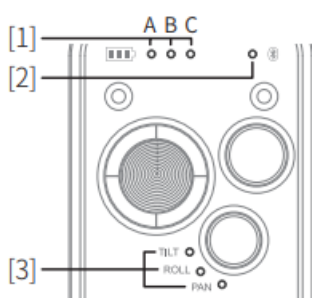
[2] Bluetooth indicator

[3] Follow status indicator

TILT = Tilt axis

ROLL= Roll axis

PAN = Pan axis



The indicator is on which means the corresponding axis follows the movement of user's hand.

Bluetooth indicator instruction

Bluetooth status	Indicator
Bluetooth connected	●
Bluetooth disconnected	○
Unpairing Bluetooth*	●●●

*Clear Bluetooth connection push the joystick down and hold it, then triple tap the power button

Follow status indicator instruction

Mode	Follow status indicator		
	TILT	ROLL	PAN
Lock	○	○	○
PF	○	○	●
PTF	●	○	●
FPV	●	●	●
FFW	●●●	●●●	●●●
Auto rotation	●	●	●

Other status indicator instruction

Status	Battery indicator		
	A	B	C
Sleep mode			
Initializing	●●●	●●●	●●●
Initialization failed	●●●	●●●	●●●
Upgrading	The green light flashes cyclically		
Upgrade failed	The yellow light flashes cyclically		

Battery indicator instruction

Battery level	Battery indicator		
	A	B	C
Fully charged	●	●	●
High level of battery	●	●	●●●
Medium level of battery	●	●●●	○
Low power	●●●	○	○
Low power, will auto power off	●	○	○

Icon:

● / ● / ● / ●	Light of corresponding color is on
●●○ ●●○	Blue light keeps flashing twice
●●●	Blue light flashes quickly
●●●	Yellow light flashes quickly
●●●	Red light flashes quickly
●●●	Green light flashes quickly
●●●○ ●●●○	Green light breathing
○	Light is off

Specifications

Product name: Feiyu SCORP-Mini P 3-Axis Handheld Gimbal for Smartphone

Product model: FeiyuMP01

Max. Tilt Range: +143° ~-147° ±3°

Max. Roll Range: +90.4° ~-199.7° ±3°

Max. Pan Range: 360°

Weight: About 683g (not including tripod)

Payload capability: About 520g (Well-balanced)

Battery life: About 11 Hours (Well-balanced)

Charging time: About 1.5 Hours (18W quick charge)

Battery: 2200mAh

Operating voltage: 6.8V-8.4V

Compatible smartphones: iPhone and Android phones (the width of the phone 55~ 88mm)

Packing List

SCORP-Mini P ×1, Tripod ×1, USB-C cable ×1, Manual ×1

Notice

1. Make sure motor spinning is not blocked by external force when the product is power on.
2. The product DO NOT contact water or other liquid if the product is not mark waterproof or splash-proof.
Waterproof and splash-proof product DO NOT contact sea water or other corrosive liquid.
3. DO NOT disassembly the product except marked detachable. It need send to FeiyuTech after-sales or authorized service center to fix it if you accidently disassembly and cause abnormal work. The relevant costs

are borne by user.

4. Prolonged continuous operation may cause the product surface temperature to rise, please operate carefully.
5. DO NOT drop or strike the product. If the product is abnormal, contact Feiyu After-sales support.

Storage and Maintenance

1. Keep the product out of the reach of children and pets.
2. DO NOT leave the product near heat sources such as a furnace or heater. DO NOT leave the product inside of a vehicle on hot days.
3. Please storage the product in dry environment.
4. DO NOT overcharge or overuse the battery, otherwise it will cause damage to the battery core. If does not use the product for a long time, please charge it at least once within one month.
5. Never use the product when the temperature is too high or too low.

FCC regulatory conformance:

This device complies with Part 15 of the FCC Rules. Operation is subject to the following two conditions:

- (1) This device may not cause harmful interference.
- (2) This device must accept any interference received, including interference that may cause undesired operation.

NOTE

This equipment has been tested and found to comply with the limits for a Class B digital device, pursuant to part 15 of the FCC Rules. These limits are designed to provide reasonable protection against harmful interference in a residential installation.

This equipment generates uses and can radiate radio frequency energy and, if not installed and used in accordance with the instructions, may cause harmful interference to radio communications. However, there is no guarantee that interference will not occur in a particular installation. If this equipment does cause harmful interference to radio or television reception, which can be determined by turning the equipment off and on, the user is encouraged to try to correct the interference by one or more of the following measures:

- Reorient or relocate the receiving antenna.
- Increase the separation between the equipment and receiver.
- Connect the equipment into an outlet on a circuit different from that to which the receiver is connected.
- Consult the dealer or an experienced radio/TV technician for help.

NOTE

The manufacturer is not responsible for any radio or TV interference caused by unauthorized modifications to this equipment. Such modifications could void the user's authority to operate the equipment.

RF Exposure

This equipment complies with FCC radiation exposure limits set forth for an uncontrolled environment.

