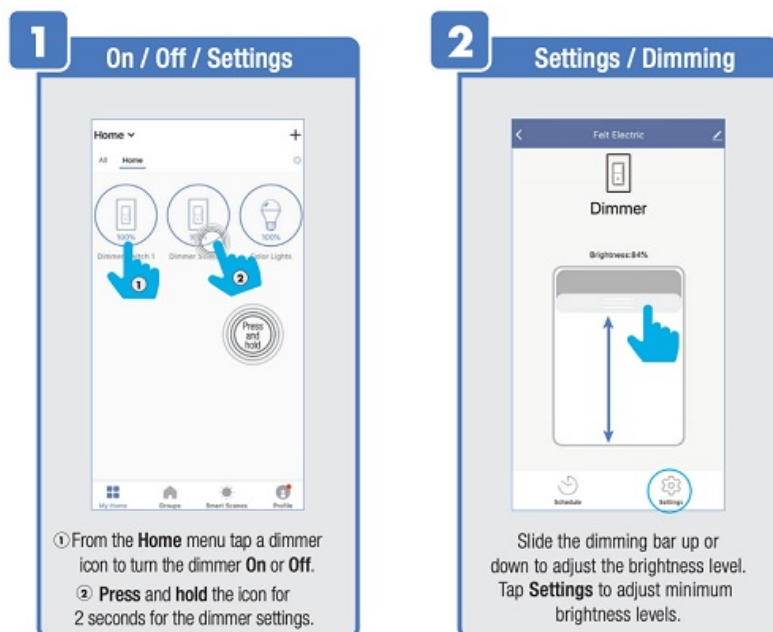


**Contents** [[hide](#)]

- [1 FEIT Dimmer Switch App](#)
- [2 Set Up Device](#)
- [3 Simple Pairing Mode](#)
- [4 Alternative Set-up](#)
- [5 Features](#)
- [6 Groups](#)
- [7 Additional Features](#)
- [8 Share Control of a Device](#)
- [9 MANAGEMENT](#)
- [10 Smart Scenes](#)
- [11 Automation](#)
- [12 Enable Siri Shortcuts@](#)
- [13 CONNECT TO ALEXA](#)
- [14 CONNECT TO GOOGLE ASSISTANT](#)
- [15 Documents / Resources](#)
 - [15.1 References](#)

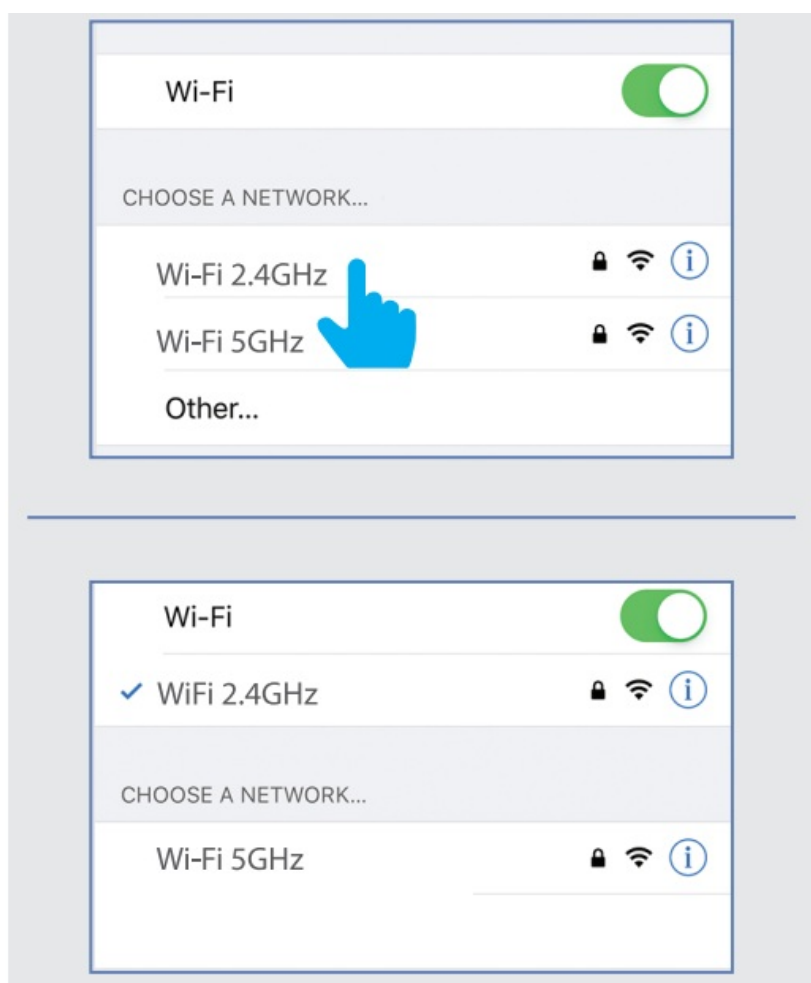
**FEIT Dimmer Switch App**



BEFORE USING THIS USER GUIDE SEE INCLUDED INSTALLATION GUIDE FOR PROPER PRODUCT INSTALLATION.

NOTE: Only works with 2.4GHz Wi-Fi networks.

Go to your Wi-Fi settings and connect your phone to your 2.4GHz Wi-Fi network.



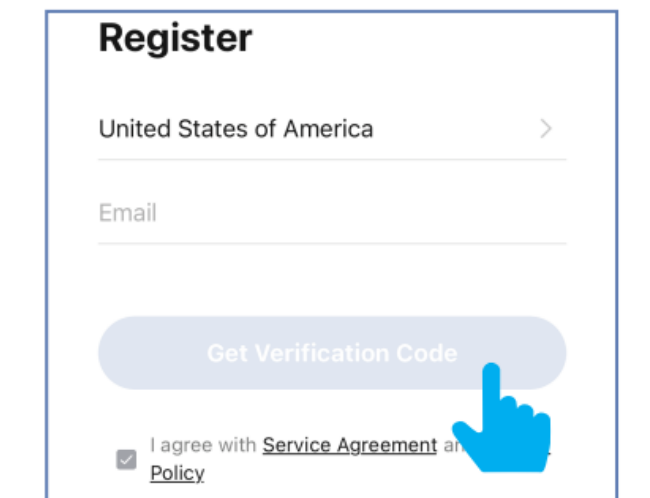
Set Up Device

1. Download the Feit Electric app.

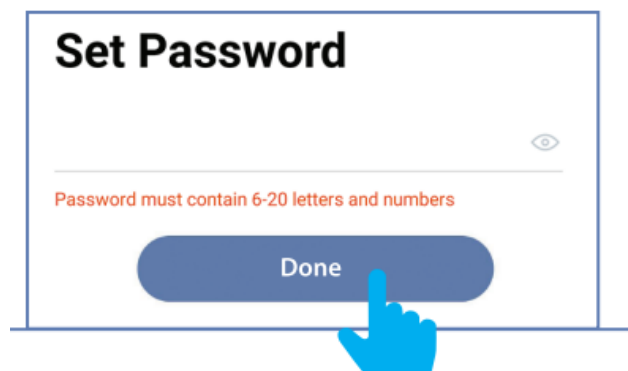


2. Launch the Feit Electric app.

Enter an email address to register, then tap Continue. A verification code will be sent to your email.

A screenshot of the "Register" screen in the Feit Electric app. It features a title "Register" at the top. Below it is a dropdown menu showing "United States of America" with a chevron icon. Underneath is an "Email" input field. A large, light blue button labeled "Get Verification Code" is centered below the email field. At the bottom, there is a checkbox that is checked, followed by the text "I agree with [Service Agreement](#) and [Policy](#)". A blue hand icon is pointing at the "Get Verification Code" button.

3. Create a password then tap Done.

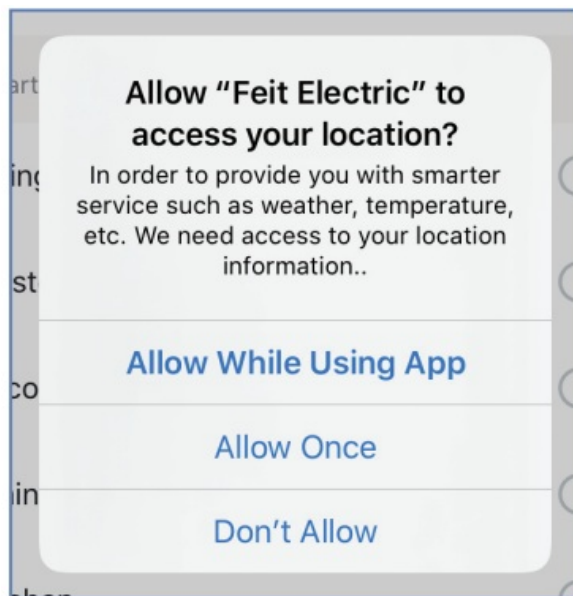
A screenshot of the "Set Password" screen in the Feit Electric app. It features a title "Set Password" at the top. Below it is a password input field with a chevron icon on the right. Underneath the field, a red error message reads "Password must contain 6-20 letters and numbers". A large, dark blue button labeled "Done" is centered below the input field. A blue hand icon is pointing at the "Done" button.

4. Permissions & Location Access

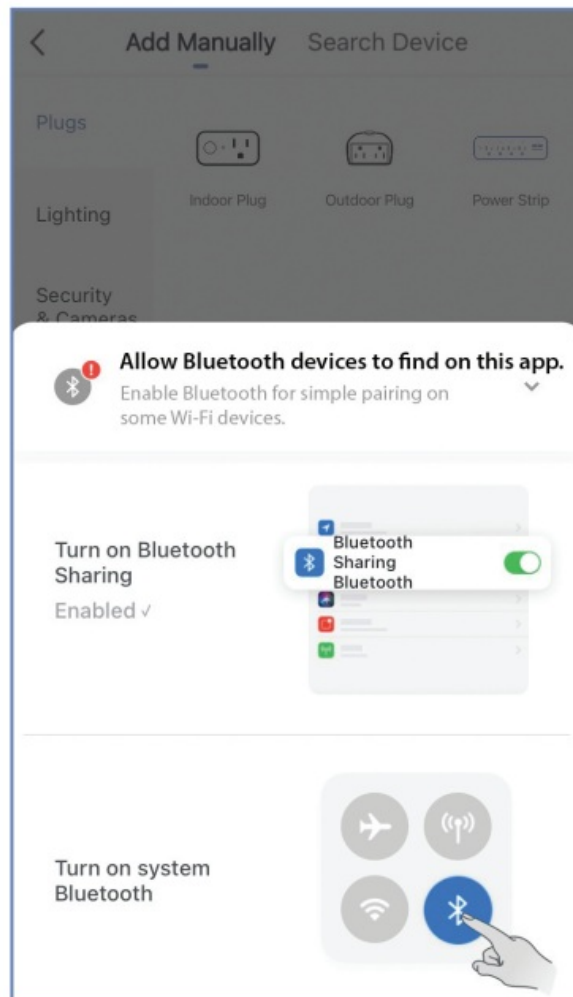
Allow notifications (highly recommended).



5. Allow the Feit Electric app to access your location to help connect your dimmer switch.

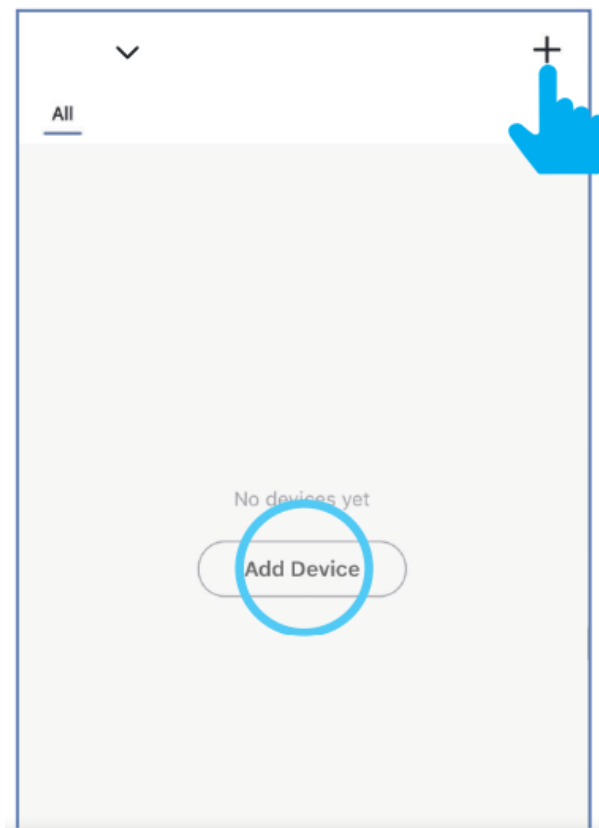


6. Enable Bluetooth on your smart device to facilitate simple pairing.



Simple Pairing Mode

1. Make sure the dimmer switch is blinking, then tap Add Device or the plus icon (+) on the upper right **corner**.

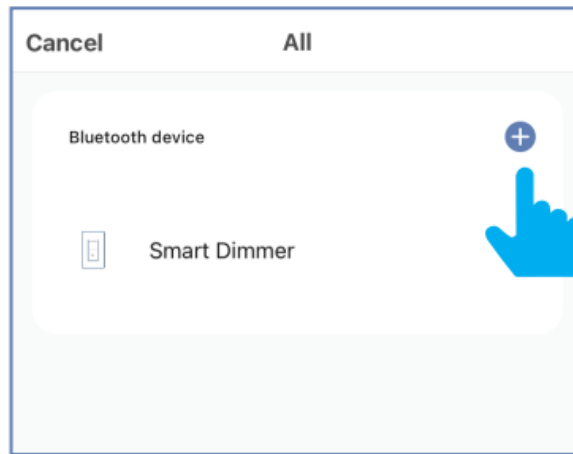


NOTE: If the dimmer switch is not blinking, turn the dimmer switch Off then On three times for pairing mode.

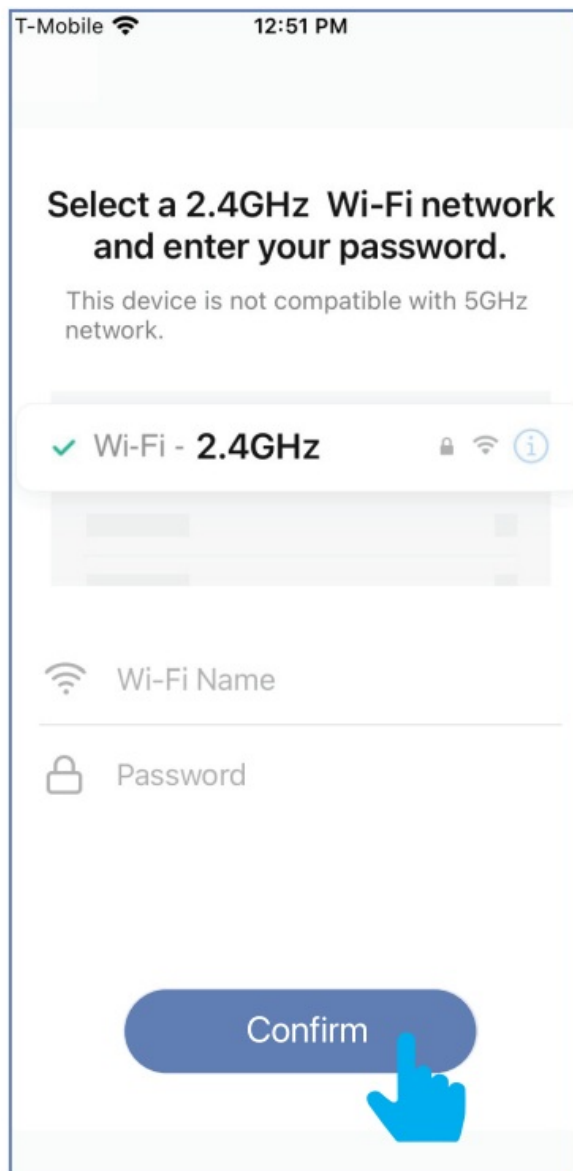
2. The dimmer switches' name(s) will appear in a small window for simple pairing enabled devices. Tap Go to add.



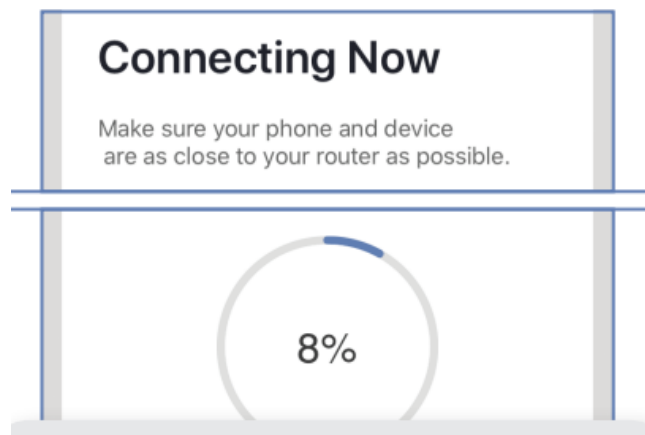
3. Select one dimmer switch from the list. Tap the plus icon (+).



4. After confirming that you are on a 2.4GHz Wi-Fi network, enter your password then tap Confirm.

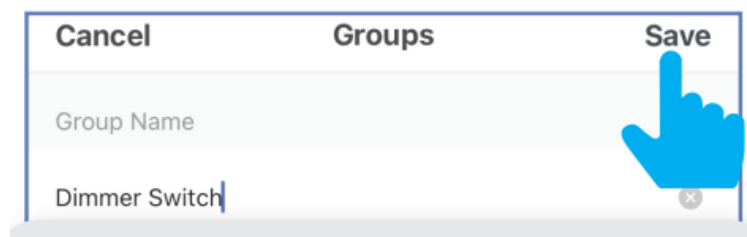


5. The status window will appear and show progress toward set-up.



NOTE: If unsuccessful, the Failed to Add screen will appear. Quit the app and repeat the previous steps.

6. To rename the dimmer switch, tap the Pen icon, enter the new name and tap Done. The dimmer switch is now ready to be controlled with the Feit Electric **app**.

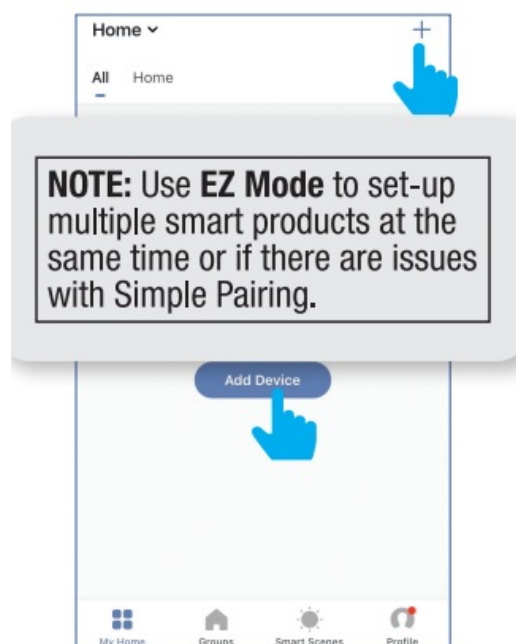


NOTE: Constant power to the dimmer switch(s) is required at all times.

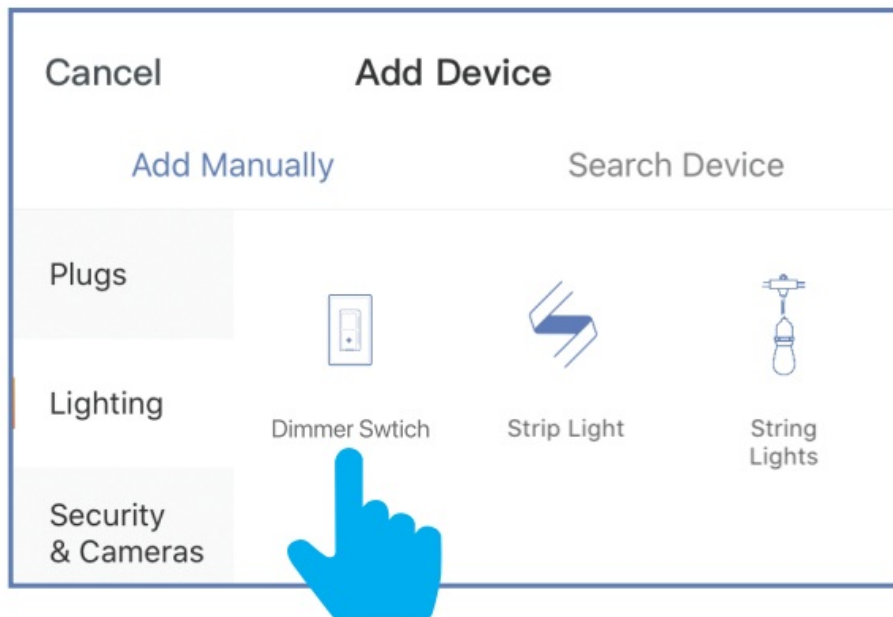
Alternative Set-up

Method EZ Mode

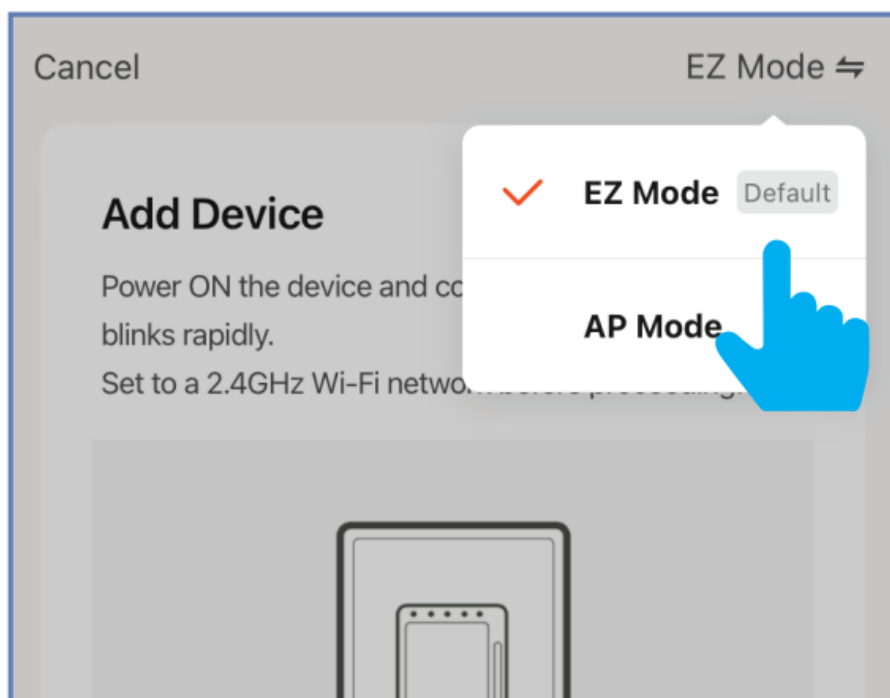
1. Tap the plus icon (+) in the upper right corner.



2. Tap Controls & Sensors, then select Dimmer Switch.

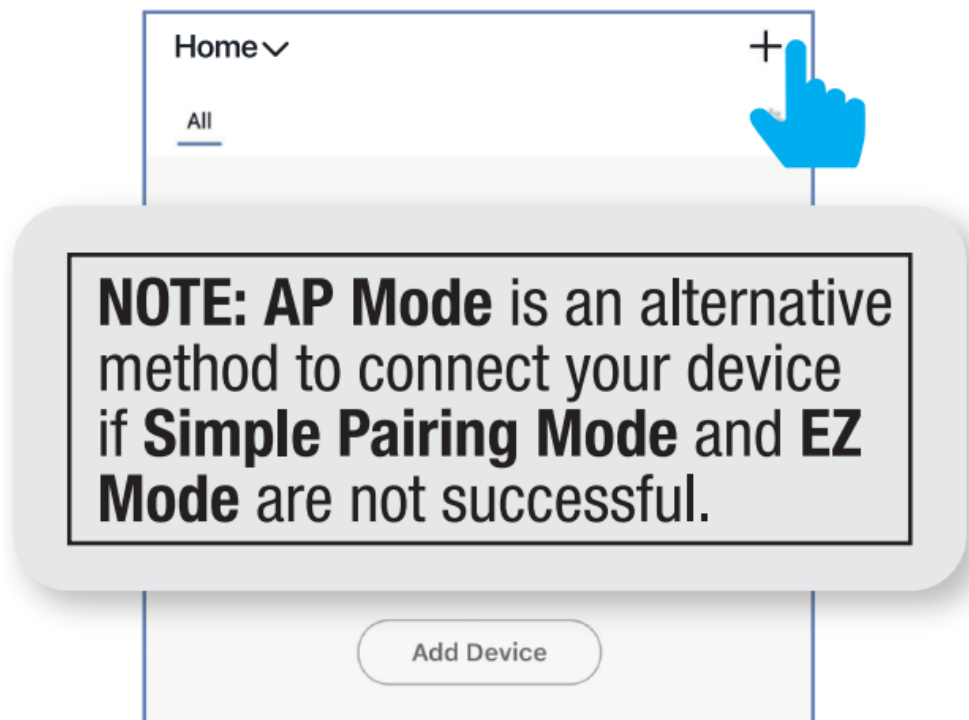


3. Tap upper right corner and make sure you have EZ Mode selected. Follow steps 4-6 from Simple Pairing Mode to complete setup.

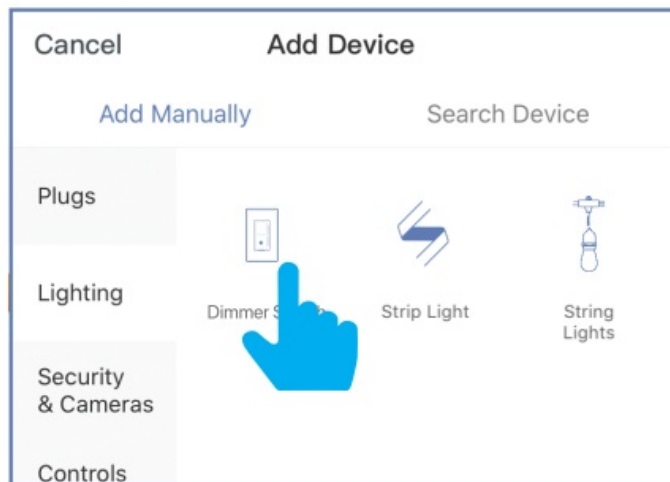


Method AP Mode

1. Tap the plus icon (+) in the upper right corner.

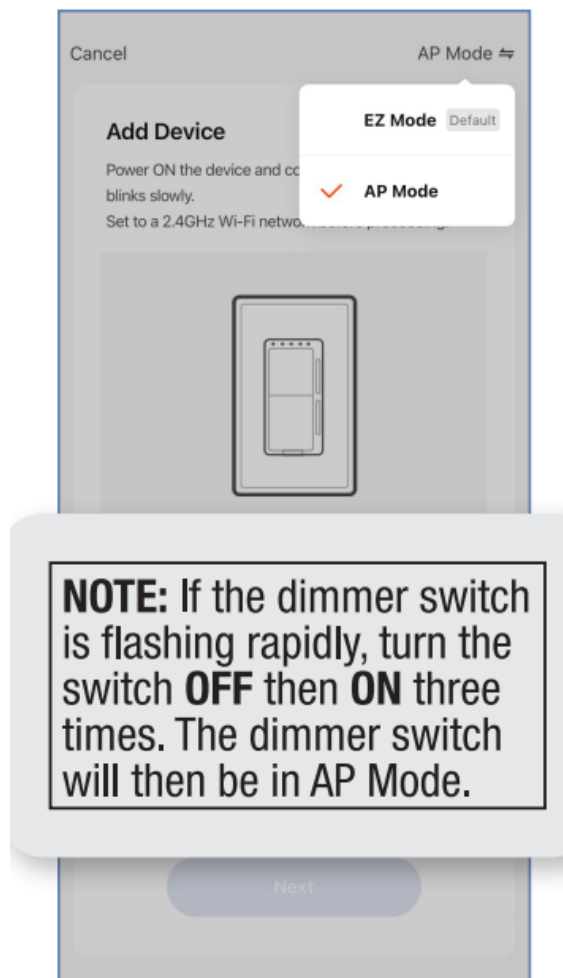


2. Tap Control & Sensors, then select Dimmer Switch.



3. Choose AP Mode.

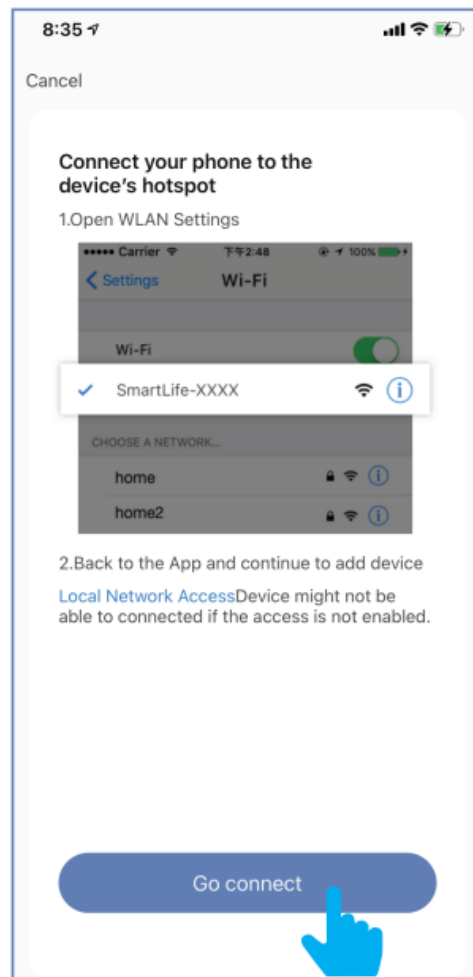
Make sure your dimmer switch is in AP pairing mode (dimmer light should flash one time every three seconds). Tap Confirm then tap Next to go on to the next step.



4. Enter the name of your 2.4GHz Wi-Fi network, enter your password and tap Next to begin connecting.



5. Tap Go connect. In your smart device's Wi-Fi settings, choose the SmartLife-XXXX network.

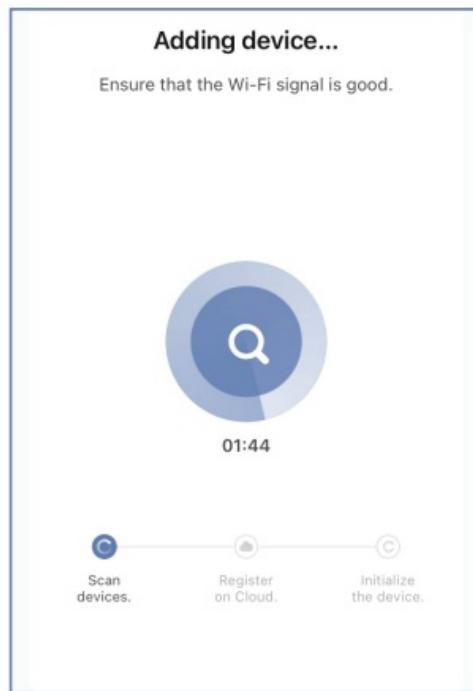


6. In your smart device's Wi-Fi settings, choose the SmartLife-XXXX network. After you have connected to SmartLife, return to the Feit Electric app.

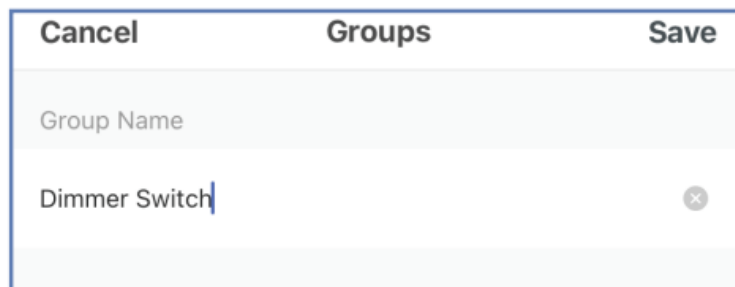


NOTE: After connecting the dimmer switch, your smart device will automatically rejoin your original 2.4GHz network.

7. Your device should begin connecting using AP Mode.



8. If you see this screen your device was added successfully.



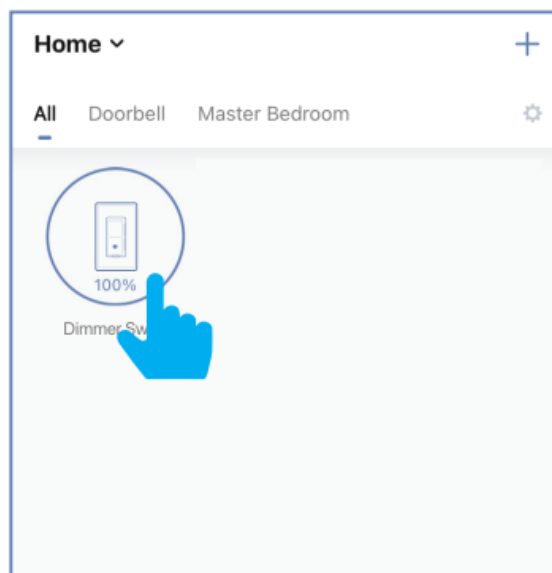
Features

1. Individual Dimmer Switch On/Off

Tap the Dimmer Switch icon to turn the Dimmer Switch On/Off.

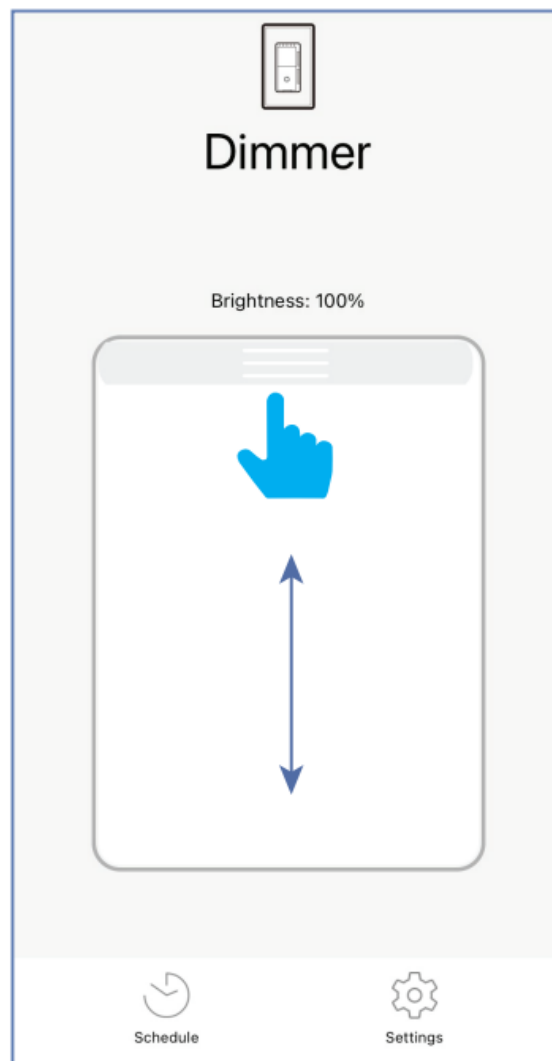
2. Individual Dimmer Switch Operation

Press and hold the Dimmer Switch icon for two seconds to enter operation.



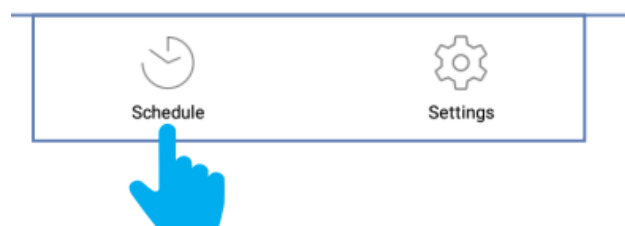
3. Dimming

Tap the Dimming icon at the bottom of screen. Slide the dimming bar up or down to set the brightness level.

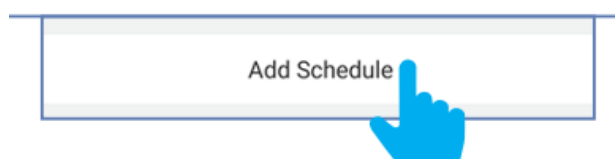


4. Schedule

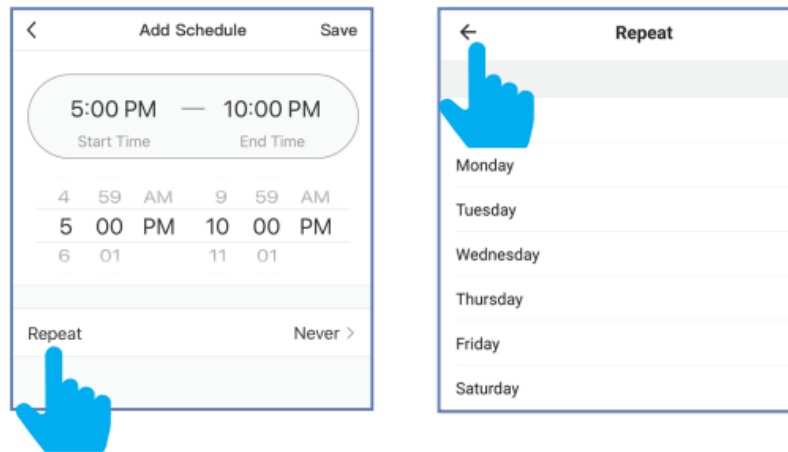
Tap on Schedule.



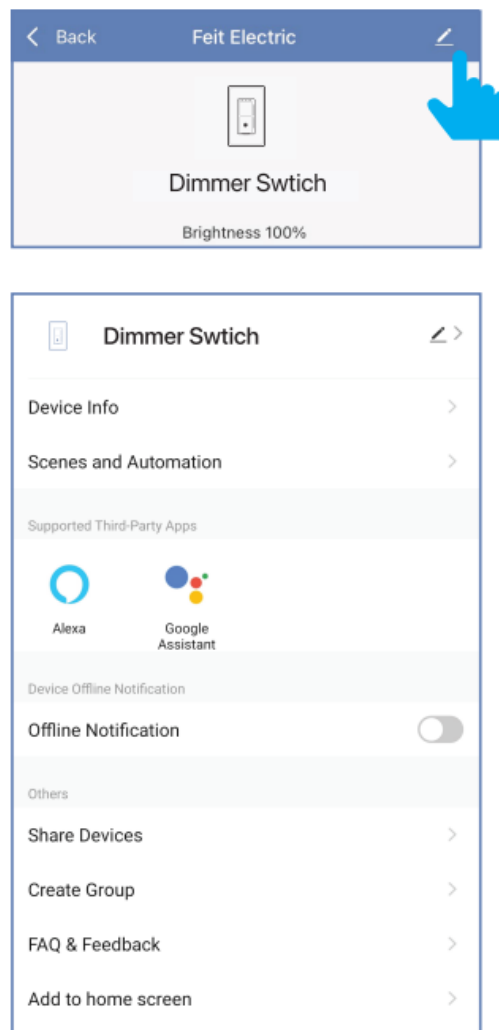
- Tap Add Schedule.



- Choose a Start Time (On) and End Time (Off). To repeat on certain days of the week, tap Repeat otherwise the schedule will only occur once.
- Tap on the day(s) of the week you would like the schedule to repeat, then tap back "e" then Save.

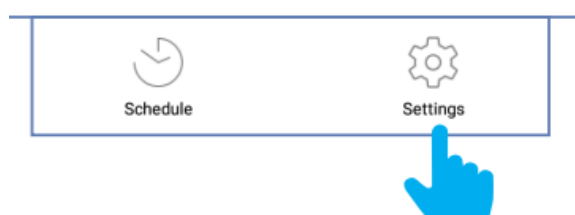


- Additional features are available in the device settings context menu, including renaming and removing devices. Tap the Pen icon in the upper right corner.




5. Settings

Tap on Settings.




- Use Settings to adjust the minimum brightness level or power off indicator light.

Select Lamp Type

Adjust the minimum brightness of your dimmer

Adjust the low-end "trim" to optimize the dimming levels. For example, if lights start to flicker past 10% or turning off prematurely, you can adjust the trim to eliminate those problems.

1%


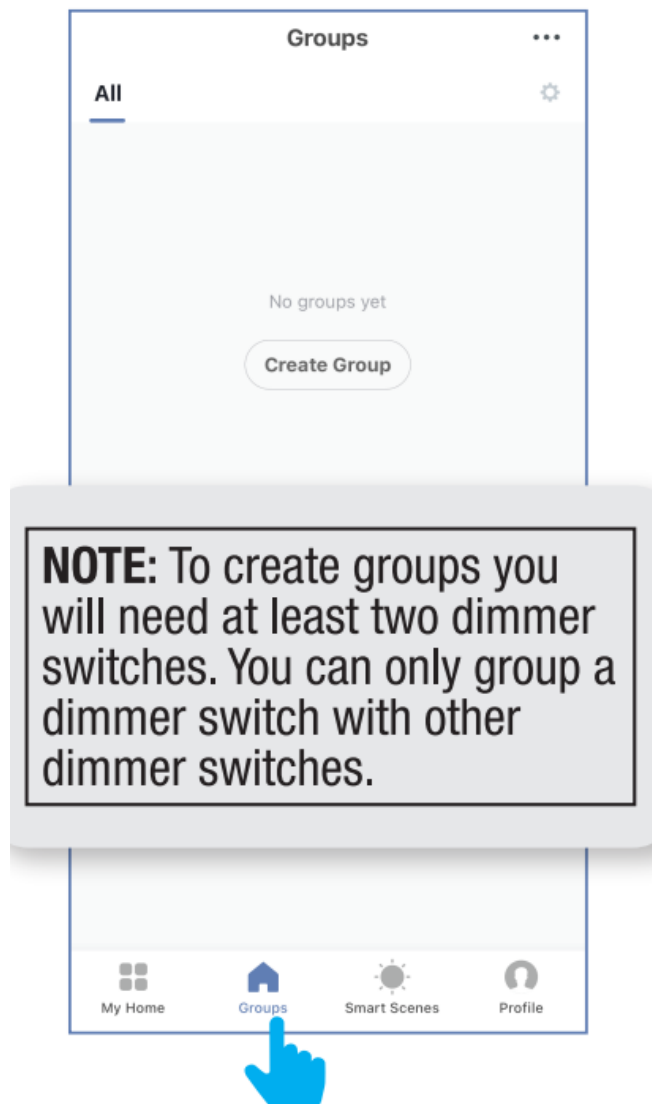
Save

Power Indicator Light

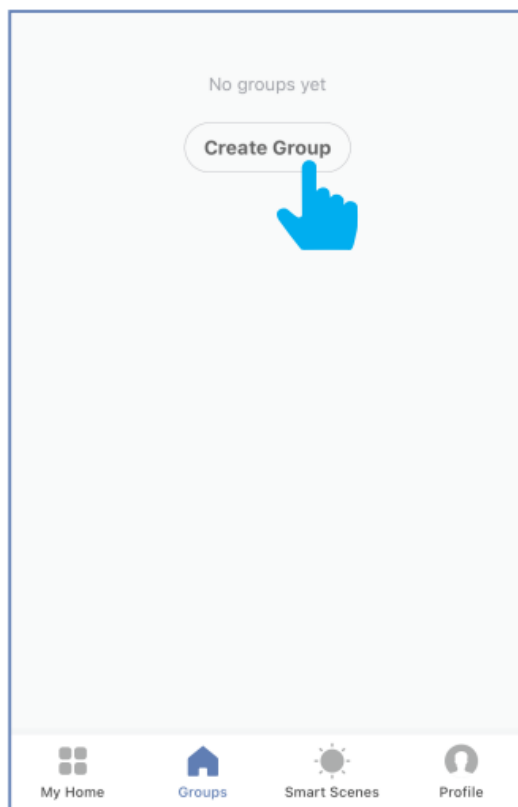
OFFLOWHIGH

Groups

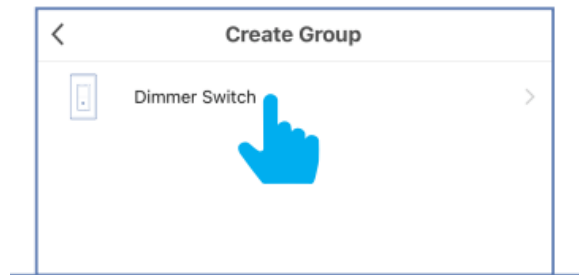
1. Tap the Groups icon at the bottom of the app home screen.



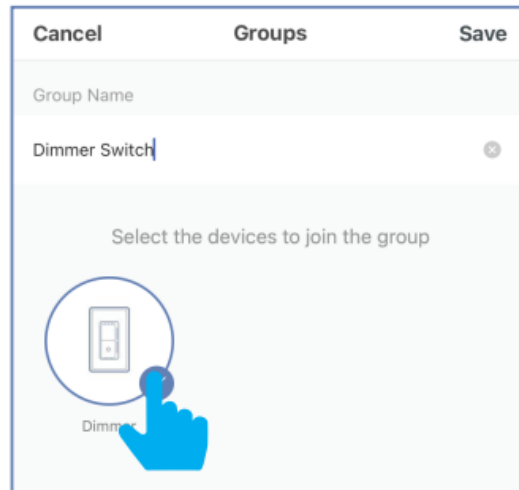
2. Tap on Create Group.



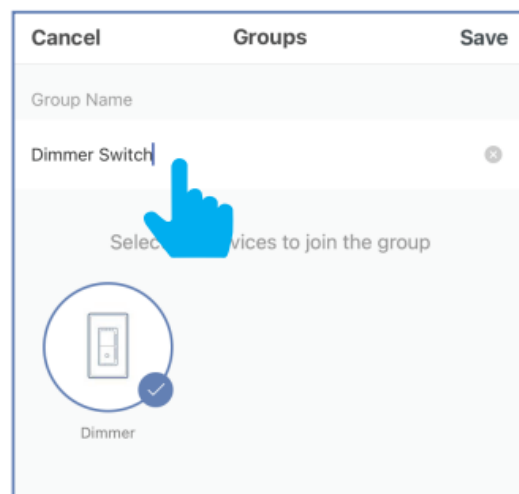
3. Tap on Dimmer Switch.



4. Select the dimmer switches that you want to group.



5. Tap the group name and enter the name of the group.

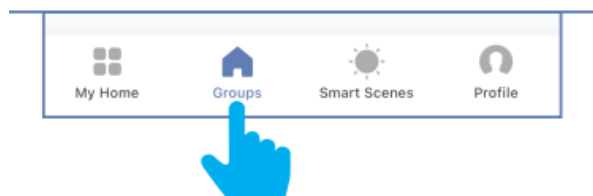


6. Once the group is named and the dimmer switches are selected, tap Save in the upper right corner.

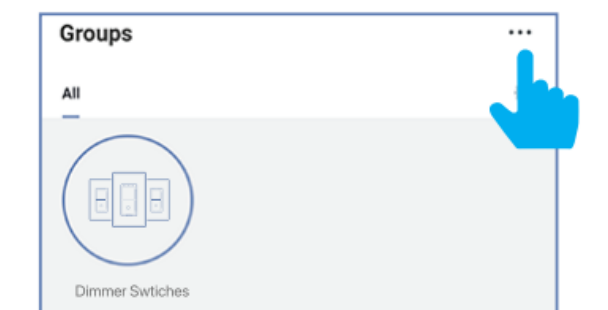


7. Manage Groups

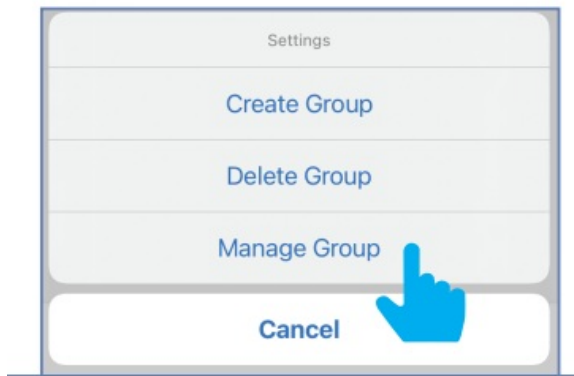
Tap the Groups icon.



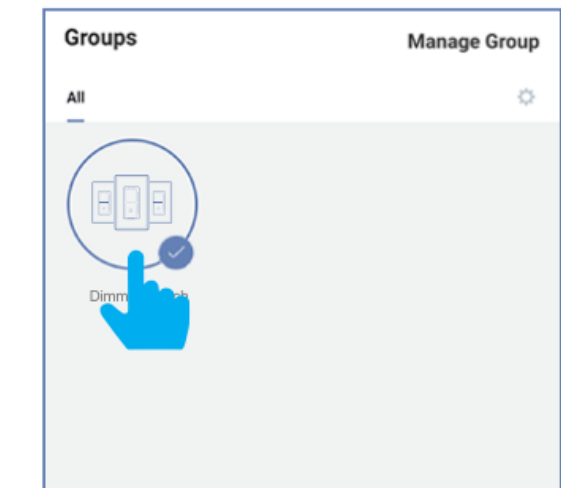
8. Tap the context menu in the upper right corner ...



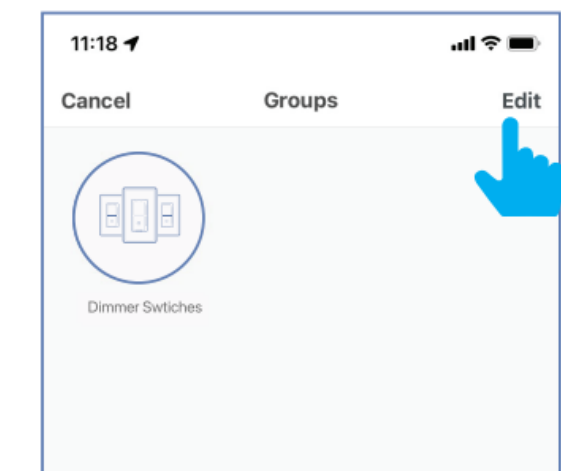
9. Tap Manage Group.



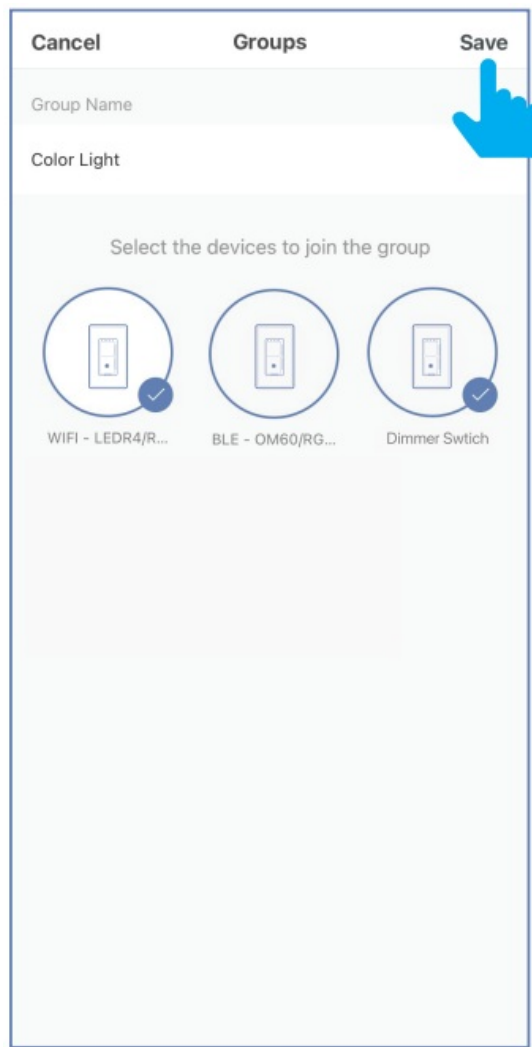
10. Select the group to edit.



11. Once selected, tap Edit in the upper right-hand corner.

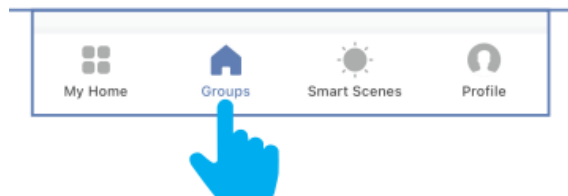


12. Rename the group or remove a dimmer switch from the group.
Once complete, tap Save in the upper right corner.

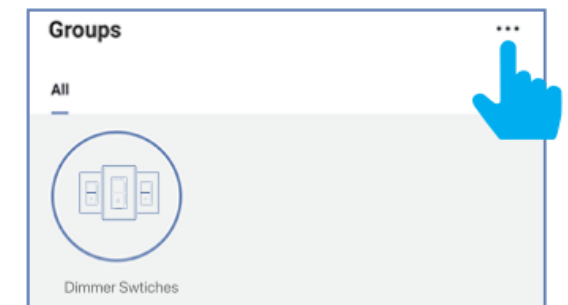


13. Delete Groups

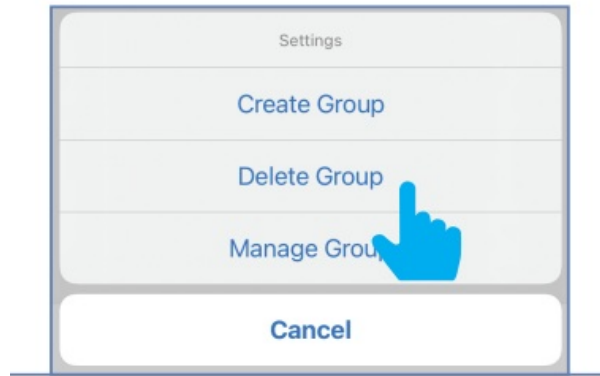
Tap the Groups icon.



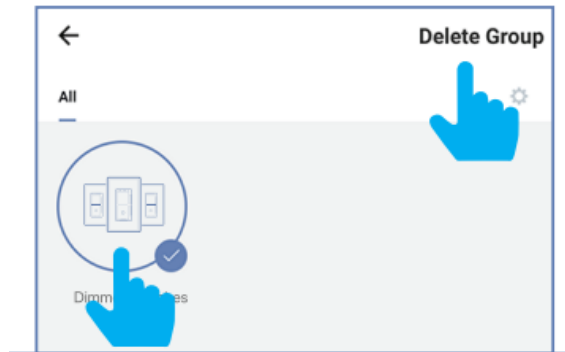
14. Tap the context menu in the upper right corner (⋮).



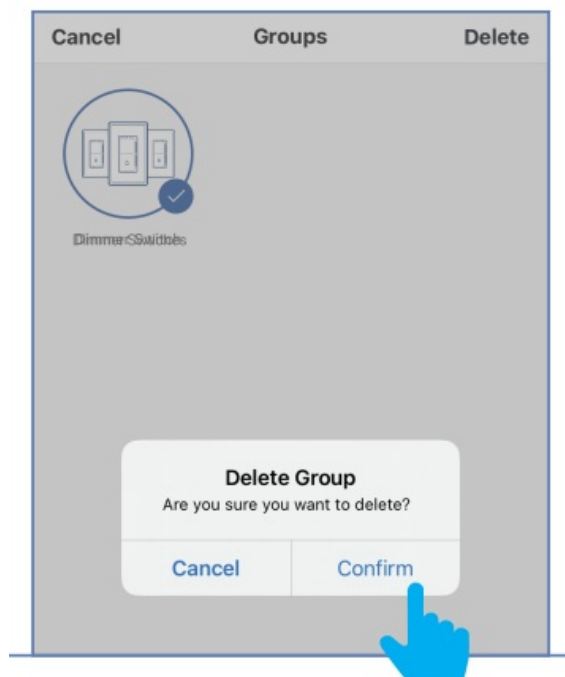
15. Tap Delete Group.



16. Select the group to delete. Once selected, tap Delete Group in the upper right corner.

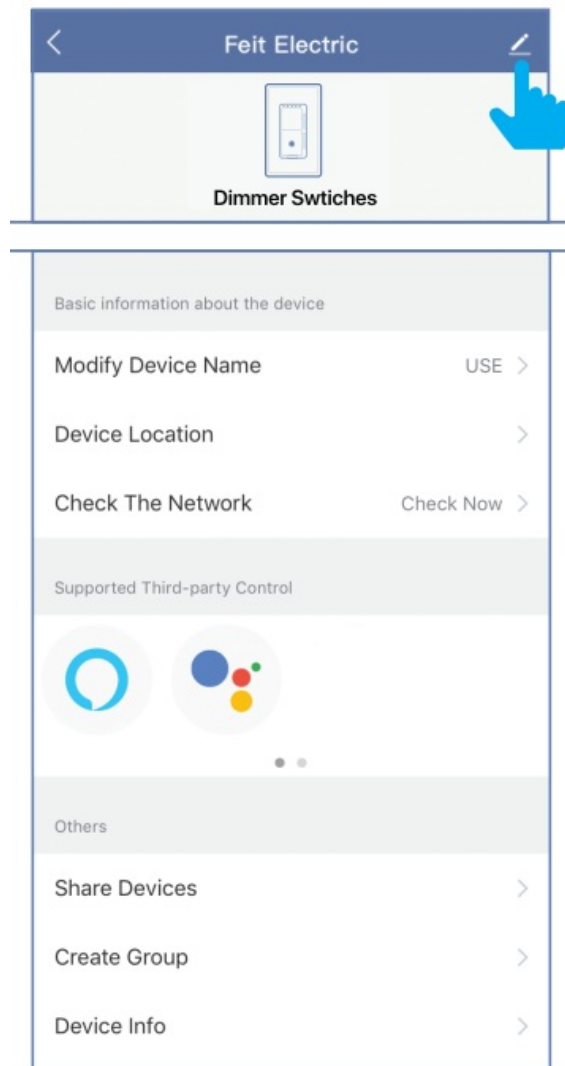


17. Tap Confirm.



Additional Features

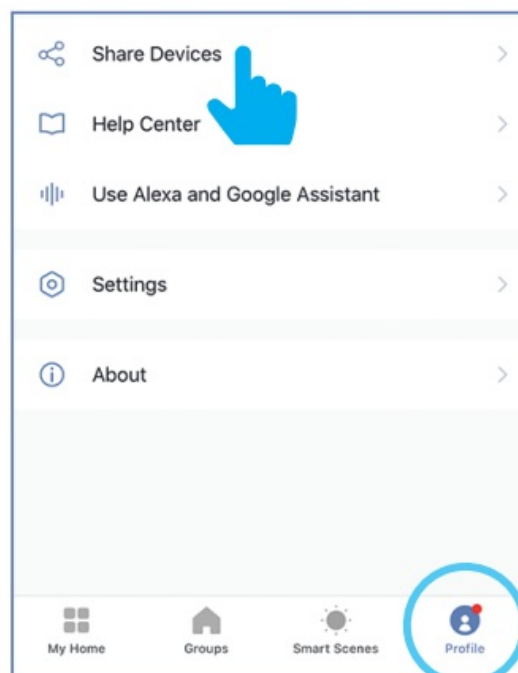
1. Additional features are available by tapping on the Pen icon, including: renaming & removing devices.



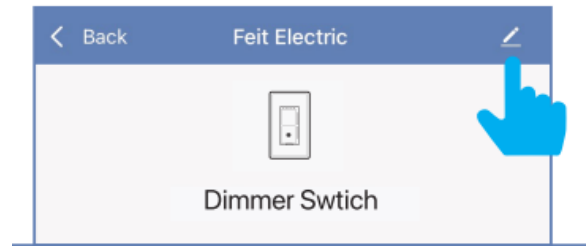
Share Control of a Device

(Two Methods)

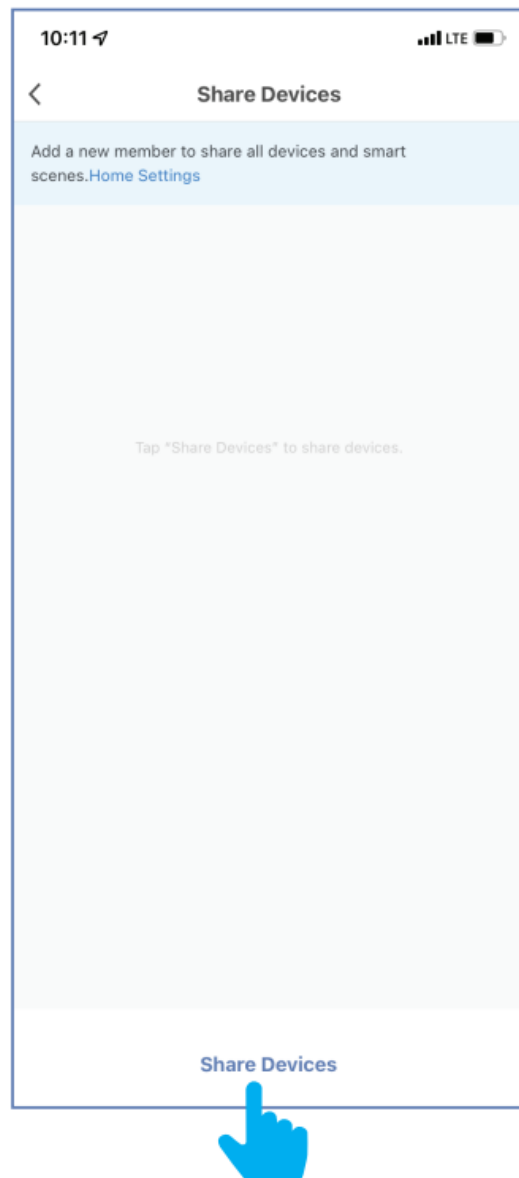
1. Method 1: Tap the Profile icon, then tap Share Devices.



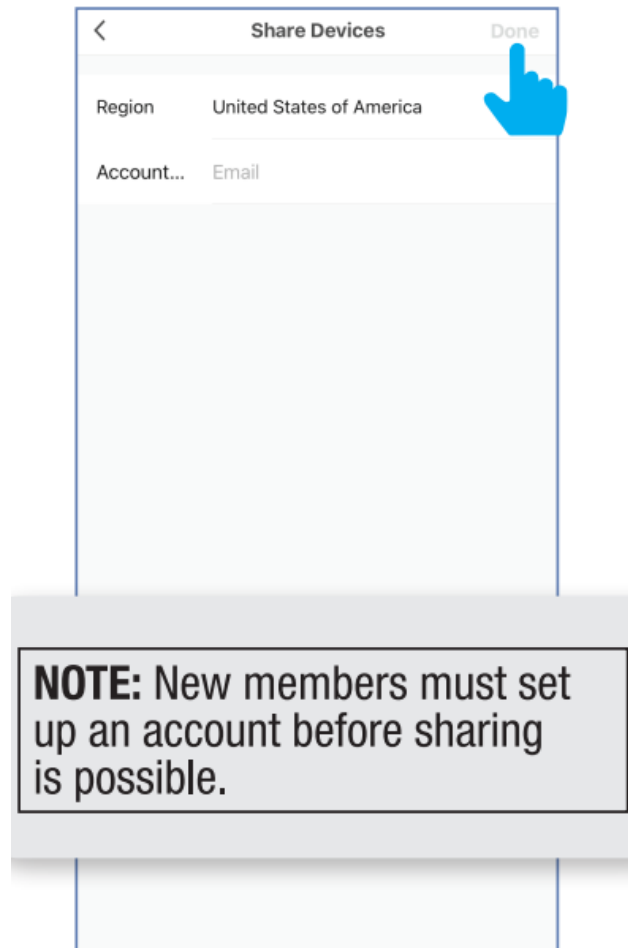
1. **Method 2:** From the dimmer switches' settings menu, tap the Pen icon located in the upper right corner. Then tap Share Devices.



2. Tap Share Devices at the bottom.



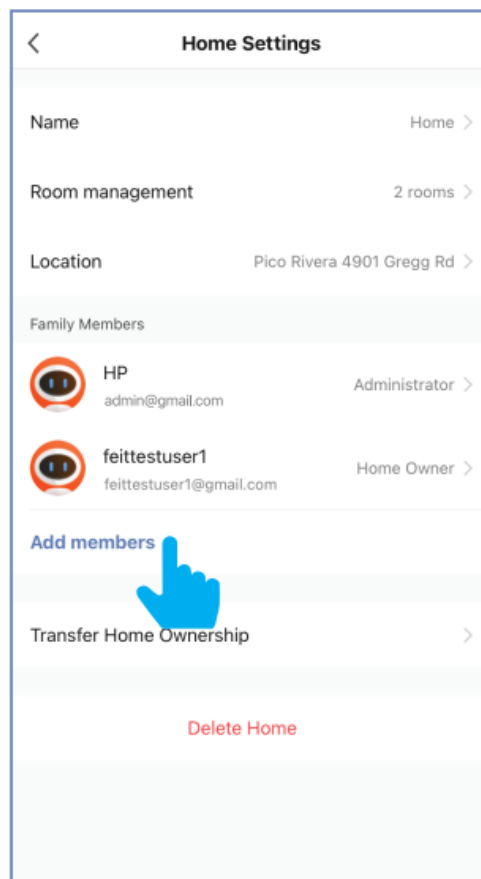
3. Enter the account name of the person you want to share with (this is typically their email address).
Then tap Done when prompted.



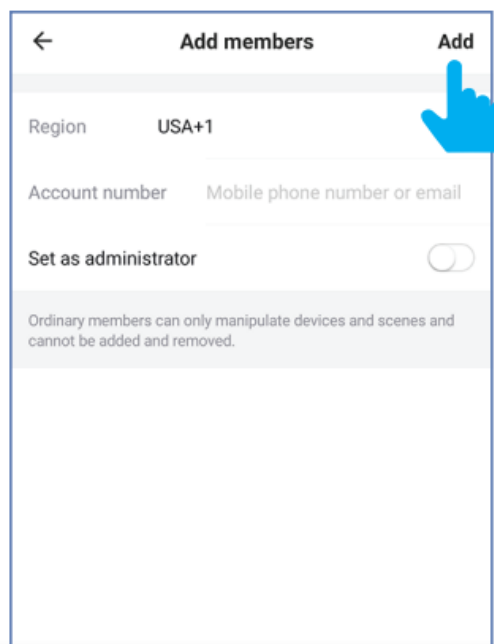
NOTE: New members must set up an account before sharing is possible.

Within a Location

1. From the home screen, tap Profile, then Location Management, then the location you would like to share.
Tap Add members.



2. Enter the new member's email address then tap Add.

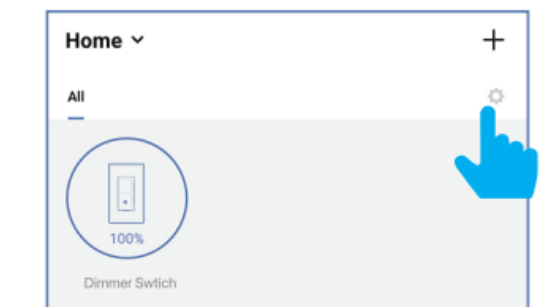


NOTE: New members must set up an account prior to sharing.

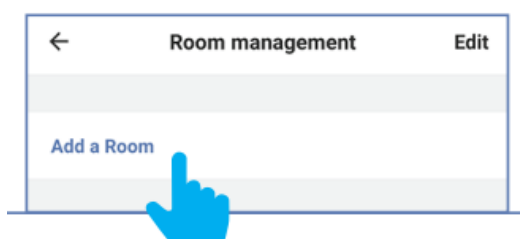
MANAGEMENT

Room Management

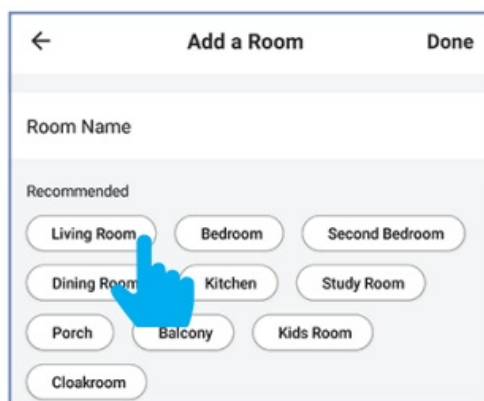
1. Tap the settings icon (⚙️) from the home menu, then tap Room Management.



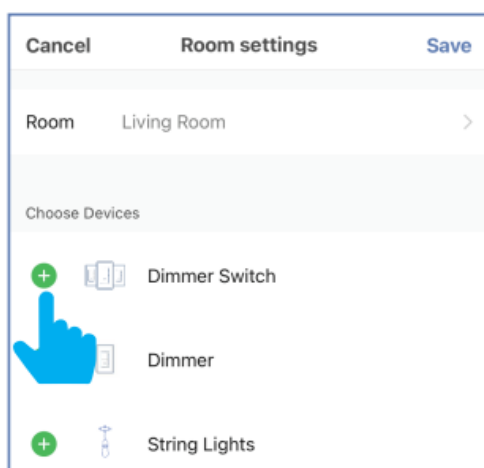
2. Tap Add a Room.



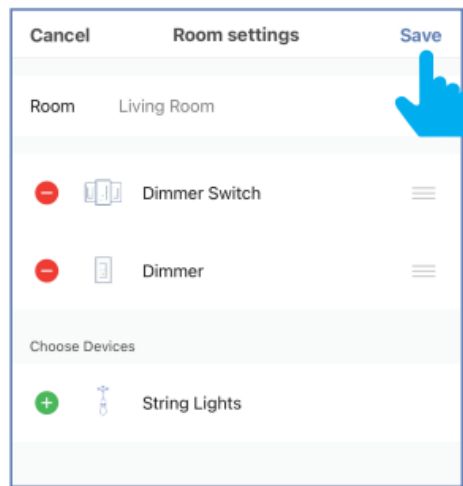
3. Tap on a preset room name or create your own.




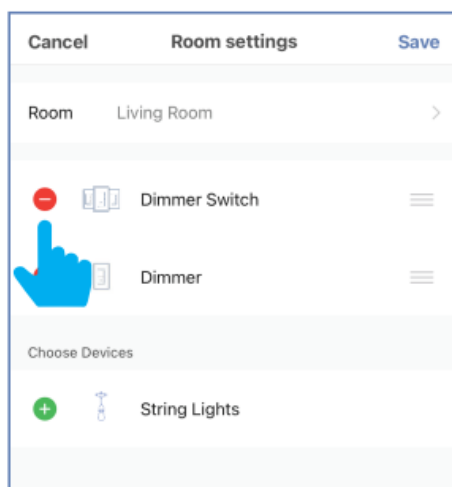
4. Add individual dimmer switch by tapping on the (+) icon next to each dimmer switches' name.



5. When finished, tap Save in the upper right corner.

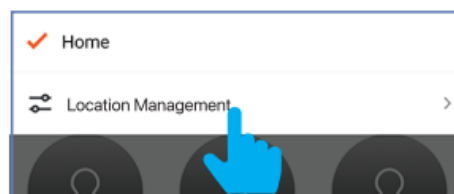
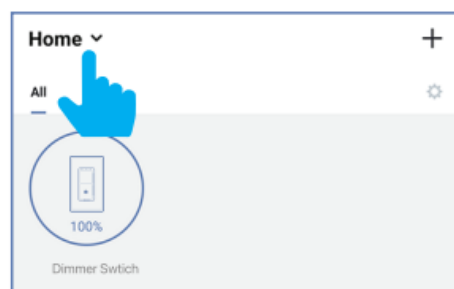


6. Remove individual dimmer switches' by tapping on the  icon next to each dimmer switches' name.

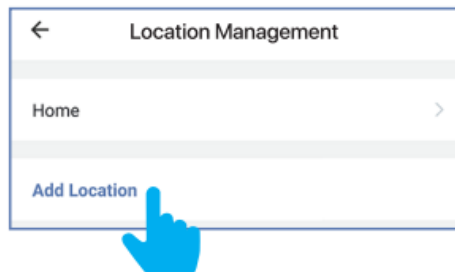


Home Management

1. Tap Home from the main menu, then tap Location Management.



2. Tap Add Location to indicate where the dimmer switches are located.

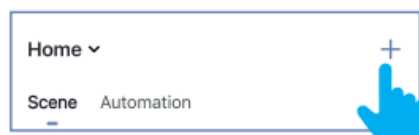


Smart Scenes

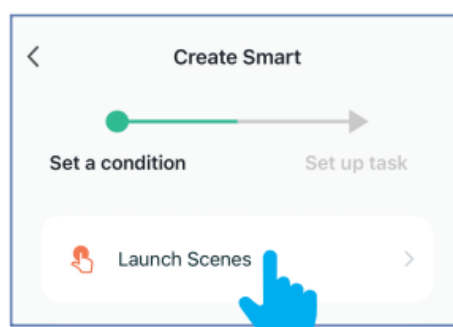
1. From the My Home page, tap Smart Scenes at the bottom of screen.



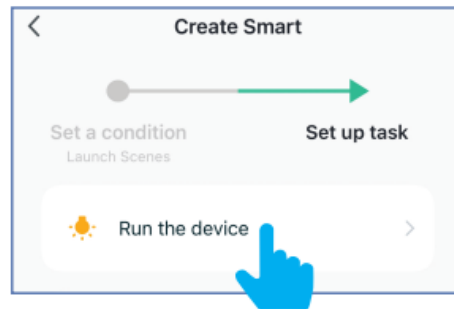
2. In the Smart Scenes Tab, tap the plus icon (+).



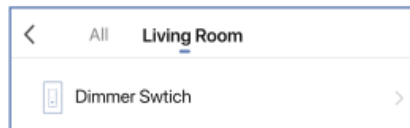
3. Tap on Run the device.



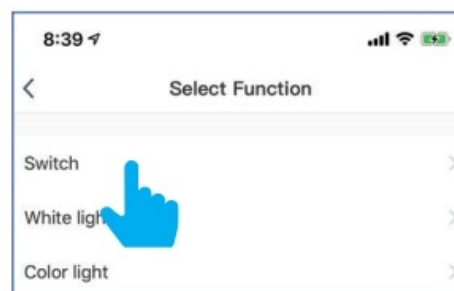
4. Select your device to initiate an action.



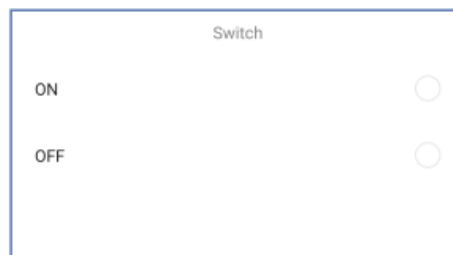
5. Select your device to initiate an action.



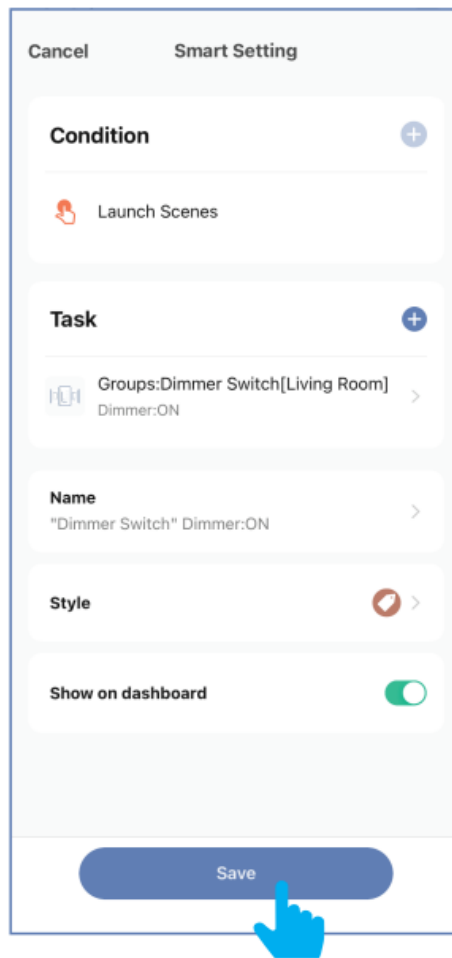
6. On the Select Function screen, tap on the action you want the device to perform.



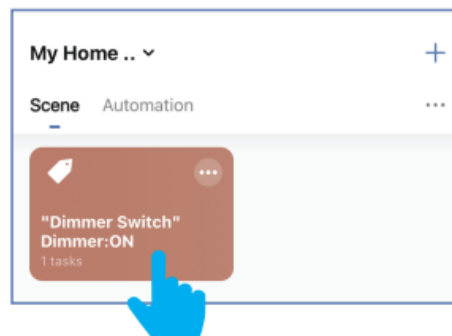
- On the Switch screen, tap On or Off.



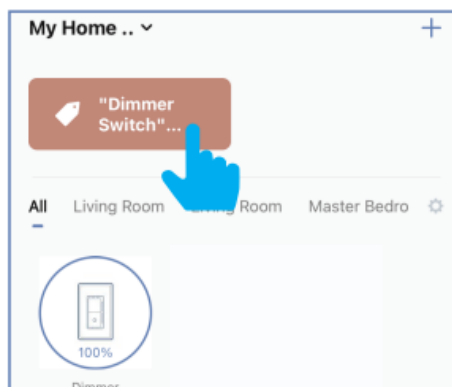
7. Review your scene, edit them if necessary, then Save.



8. Your action(s) will appear under Scene tab.

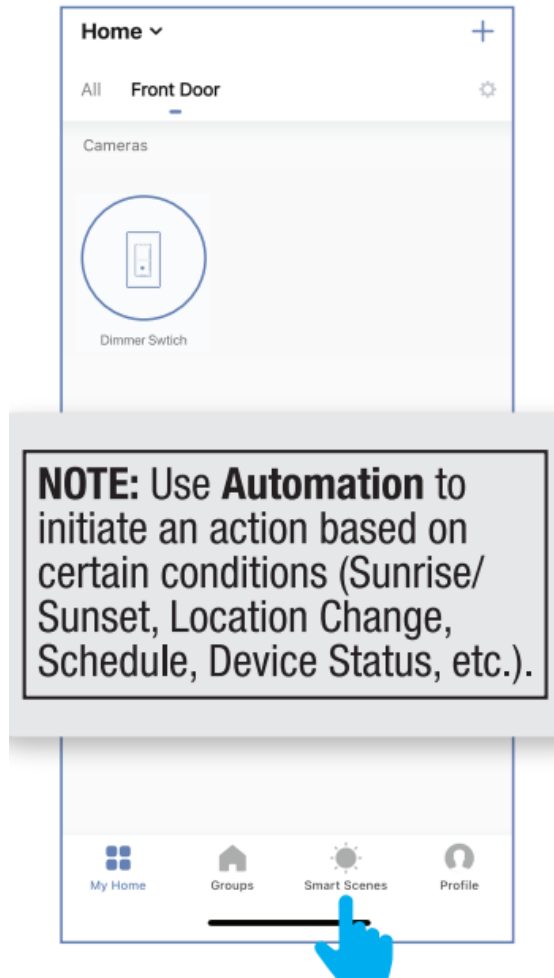


- It will also appear on the top of your My Home screen. Tap to execute your action(s).

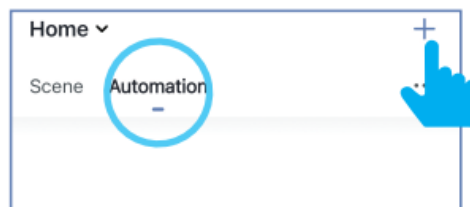


Automation

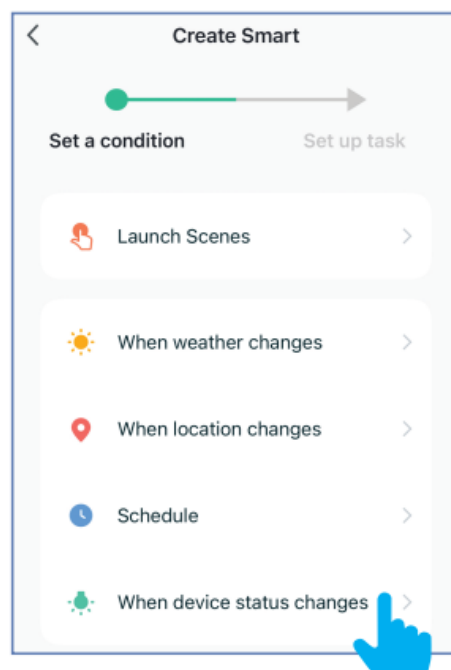
1. From the My Home page, tap Smart Scenes at the bottom of screen.



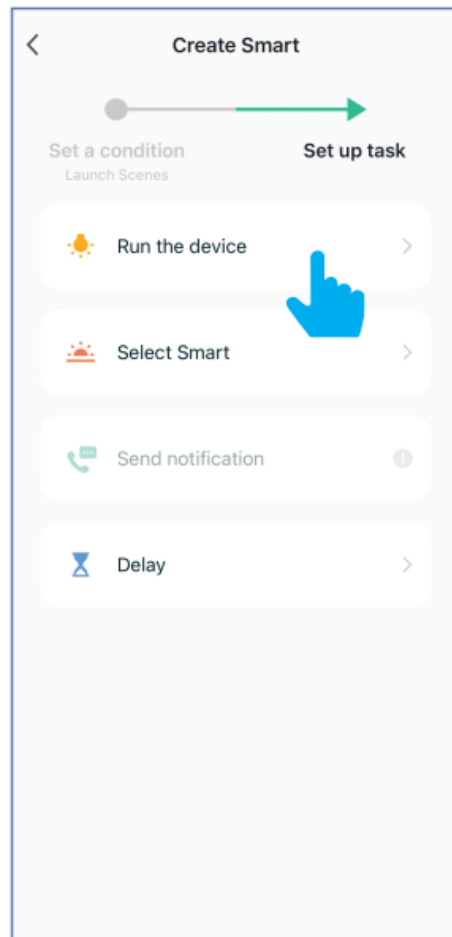
2. Tap Automation at the top of the screen, and then tap on plus icon (+).



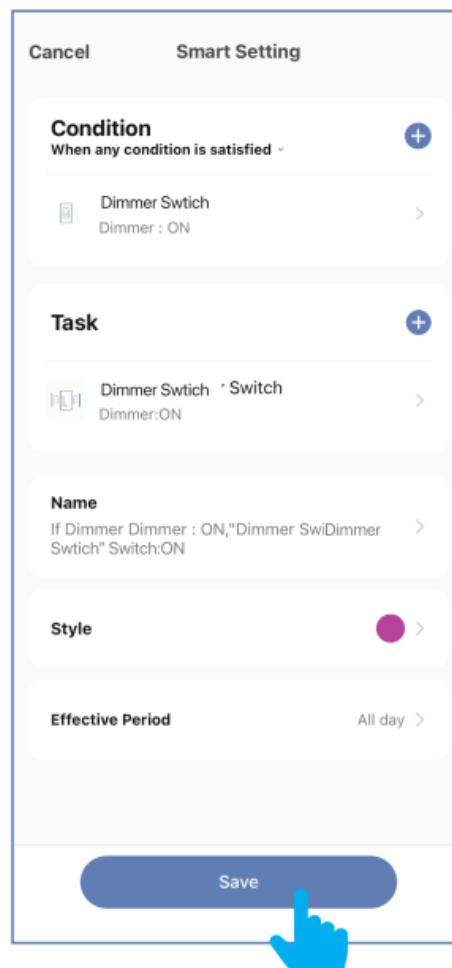
3. Set a condition you would like to trigger.



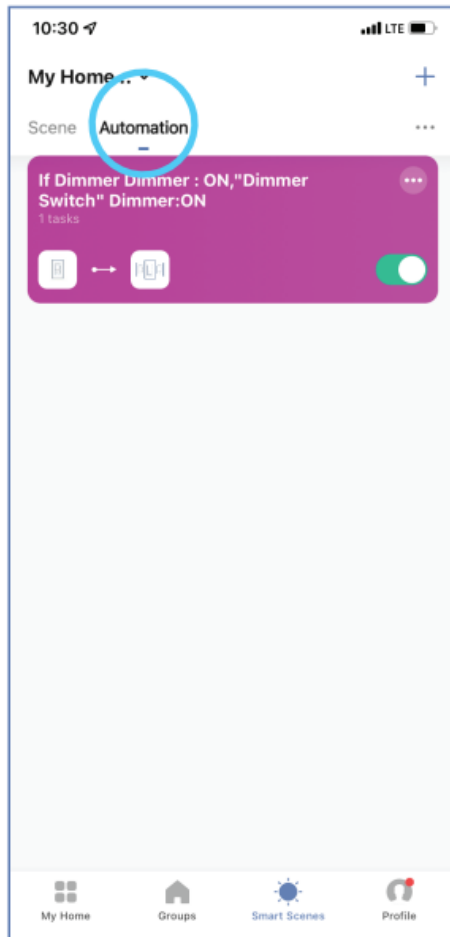
4. Set up a task you would like to automate.



5. Review your automations, edit them if necessary, then Save.



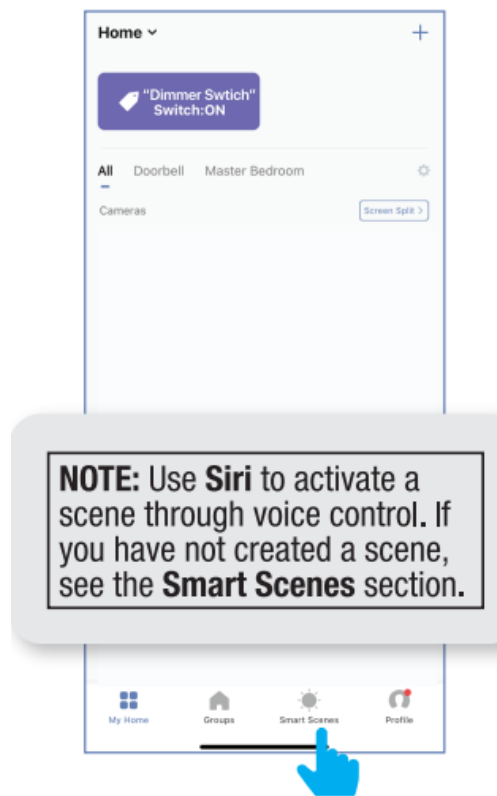
6. Your automation will appear under the Automation tab.



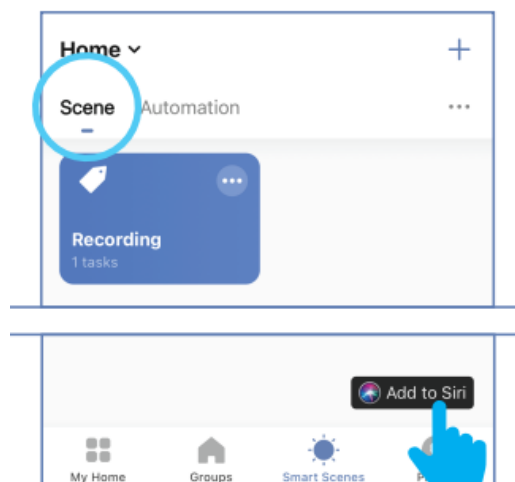
Enable Siri Shortcuts@

(for use with iPhone)

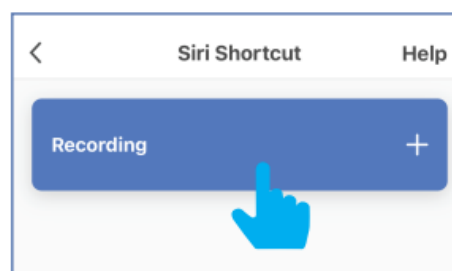
1. From the My Home page, tap Smart Scenes at the bottom of screen.



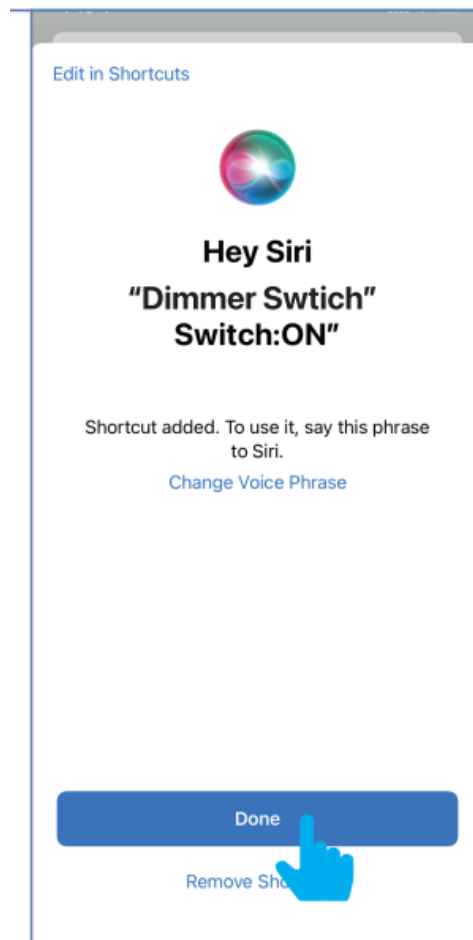
2. In the Scene tab, tap Add to Siri located at the bottom of the screen.



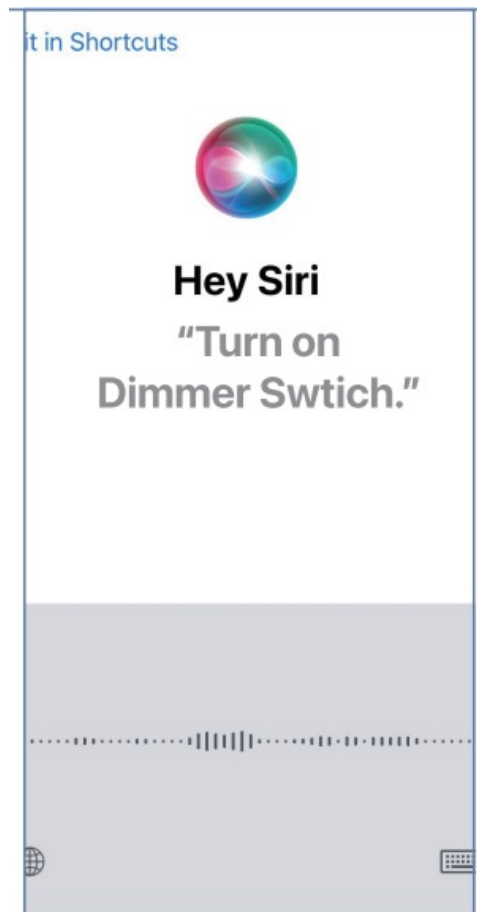
3. In the Siri Shortcut screen, tap on the action you would like to add to Siri.



4. On the “Hey Siri” screen, tap on the device name to edit it. Tap Done at the bottom of the screen.

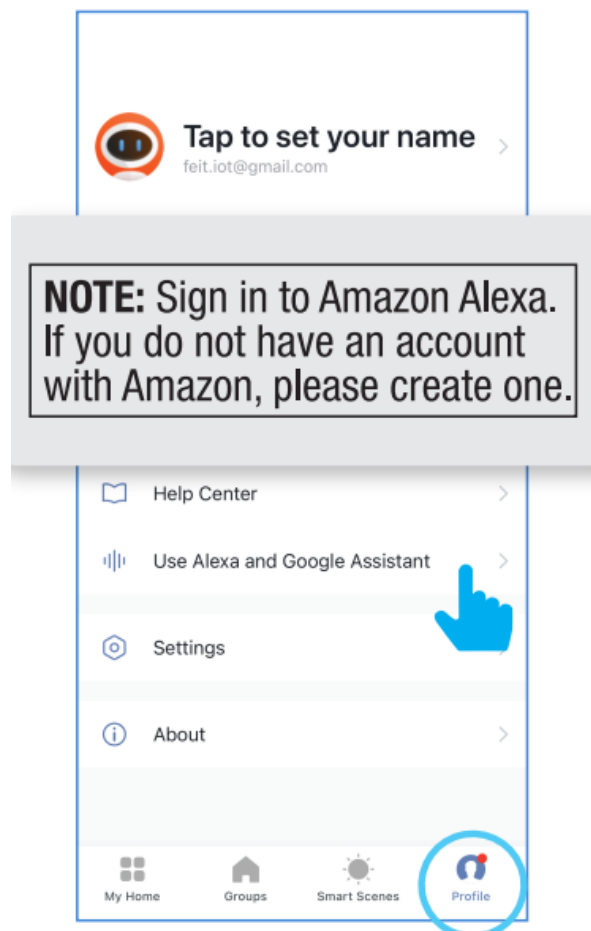


5. Now you can use the “Hey Siri” command to control this action from your iOS device.
“Hey Siri, turn on Dimmer Swtich.”

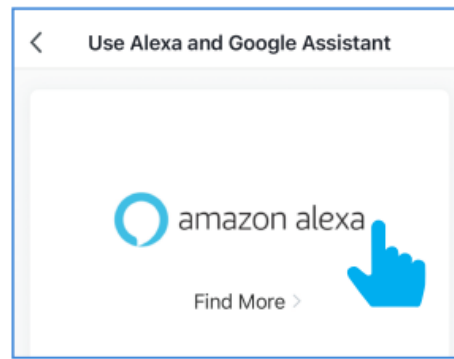


CONNECT TO ALEXA

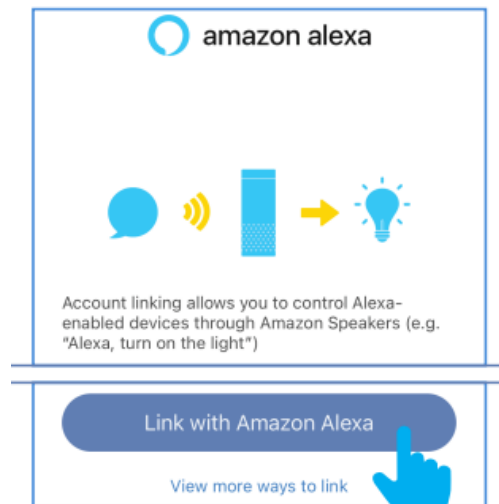
1. Tap on Profile at bottom right. Tap on Use Alexa and Google Assistant.



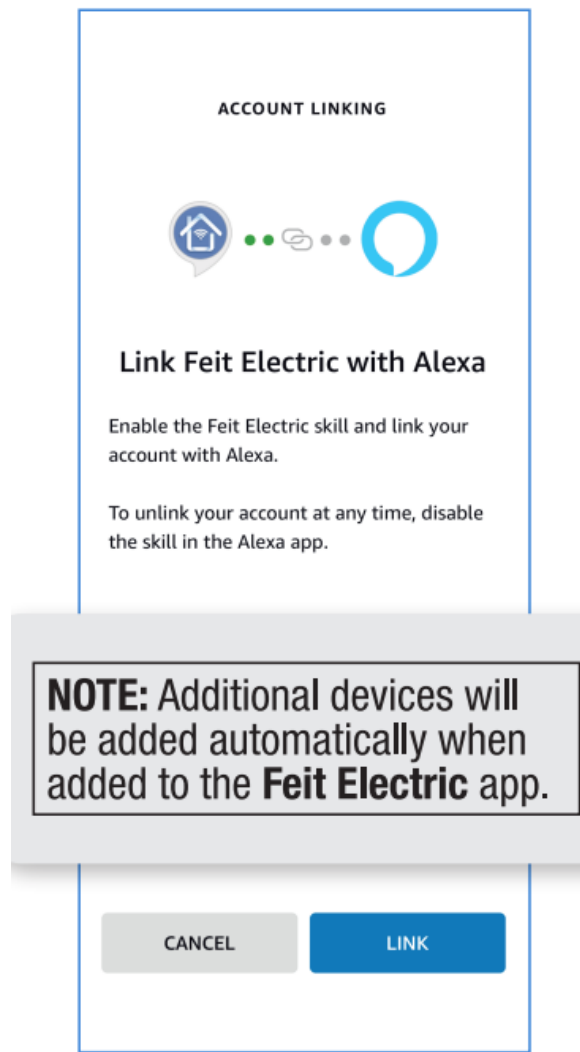
2. Tap on Amazon Alexa.



3. Tap on Link with Amazon Alexa.

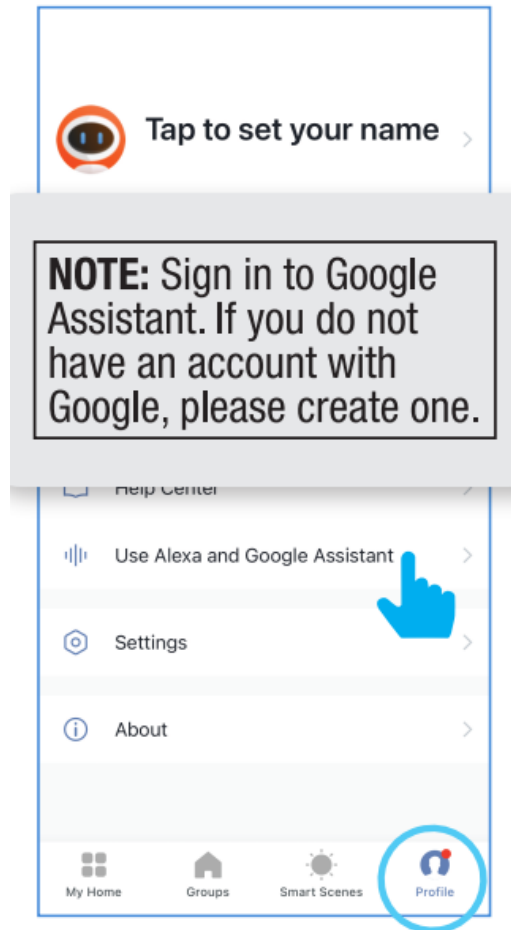


4. Tap on Link. You will be linked automatically to your Amazon Alexa app.

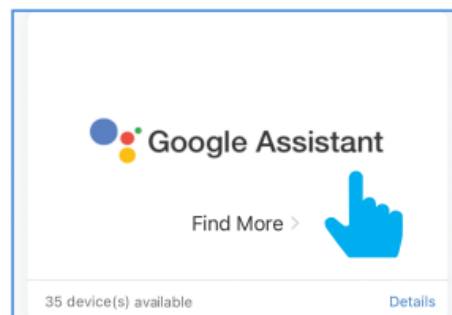


CONNECT TO GOOGLE ASSISTANT

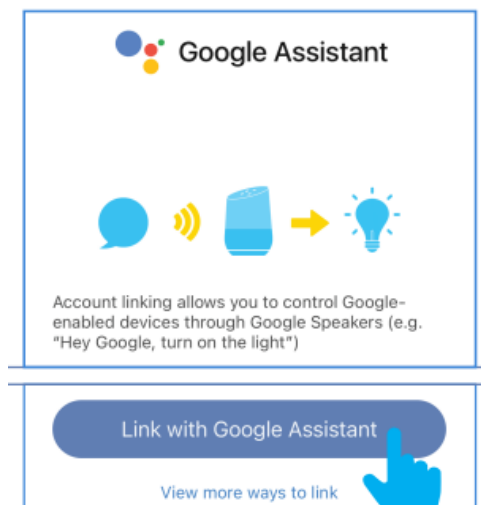
1. Tap on Profile bottom right. Tap on Use Alexa and Google Assistant.



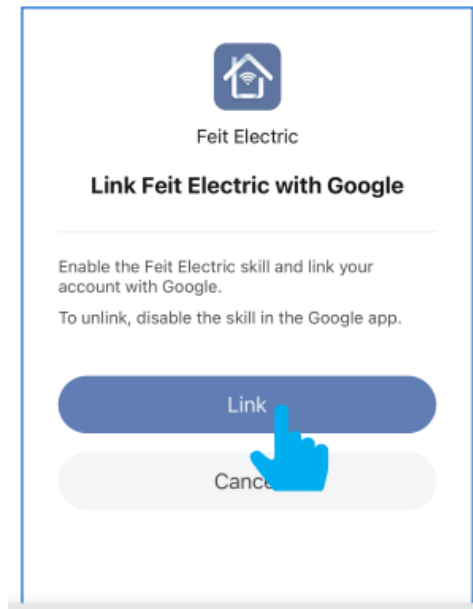
2. Tap on Google Assistant.



3. Tap on Link with Google Assistant.



4. Tap on Link. You will be linked automatically to your Google Assistant app.



NOTE: Additional devices will be added automatically when added to the Feit Electric app.

Need Help?

Please refer to our online resources at www.feit.com/help to learn about more features & latest updates

feit.com/help


For 24/7 customer support, visit feit.com/help

System Requirements

Minimum: iOS 11.0, Android™ 6.0 KitKat@ or higher
– Dedicated 2.4GHz Wi-Fi Network –

Your screen images may differ from this user guide.

Documents / Resources

	<p>FEIT Dimmer Switch App [pdf] User Guide</p> <p>Dimmer Switch App, Switch App, App</p>
---	--

References

- [User Manual](#)

📁 app, Dimmer Switch App, FEIT, Switch

📁 Feit App

Leave a comment

Your email address will not be published. Required fields are marked *

Comment *

Name

Email

Website

☐ Save my name, email, and website in this browser for the next time I comment.

Post Comment

Search:

e.g. whirlpool wrf535swhz

Search

[Manuals+](#) | [Upload](#) | [Deep Search](#) | [Privacy Policy](#) | [@manuals.plus](#) | [YouTube](#)

This website is an independent publication and is neither affiliated with nor endorsed by any of the trademark owners. The "Bluetooth®" word mark and logos

are registered trademarks owned by Bluetooth SIG, Inc. The "Wi-Fi®" word mark and logos are registered trademarks owned by the Wi-Fi Alliance. Any use of these marks on this website does not imply any affiliation with or endorsement.