



FEIT Electric Vibration Alarm Break Smart Sensor at Menards User Manual

[Home](#) » [Feit Electric](#) » FEIT Electric Vibration Alarm Break Smart Sensor at Menards User Manual 



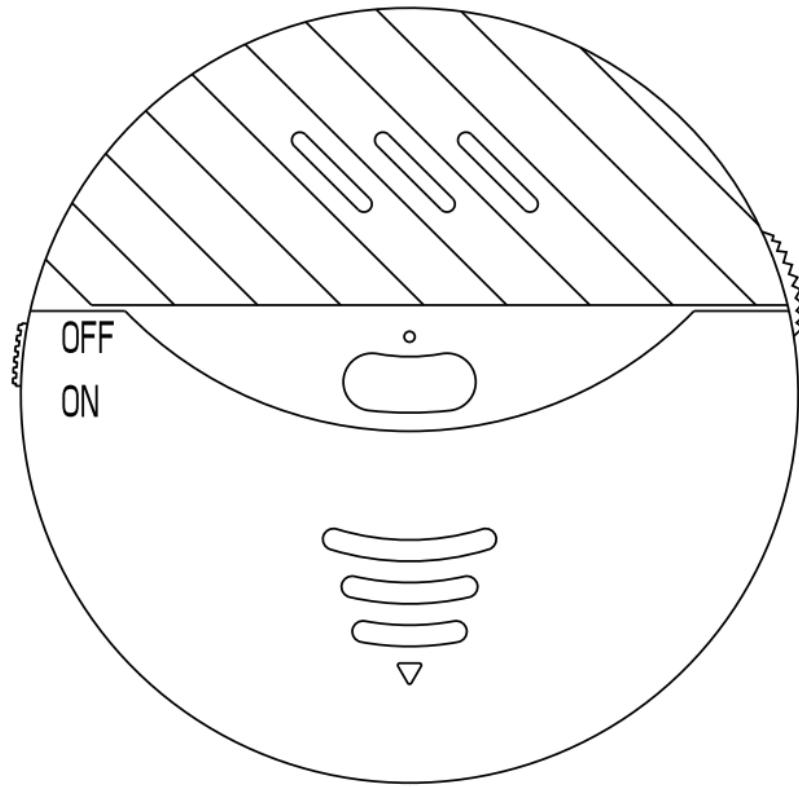
User Manual

Contents

- [1 Vibration Alarm Break Smart Sensor at Menards](#)
- [2 Specification](#)
- [3 Installation](#)
- [4 Connection instruction](#)
- [5 Linkage Instruction](#)
- [6 Notification setting](#)
- [7 Low Battery & replace battery](#)
- [8 Battery Notices](#)
- [9 FAQ](#)
- [10 Warranty Card](#)
- [11 FCC Caution:](#)
- [12 Documents / Resources](#)
- [13 Related Posts](#)

Vibration Alarm Break Smart Sensor at Menards

Vibration alarm

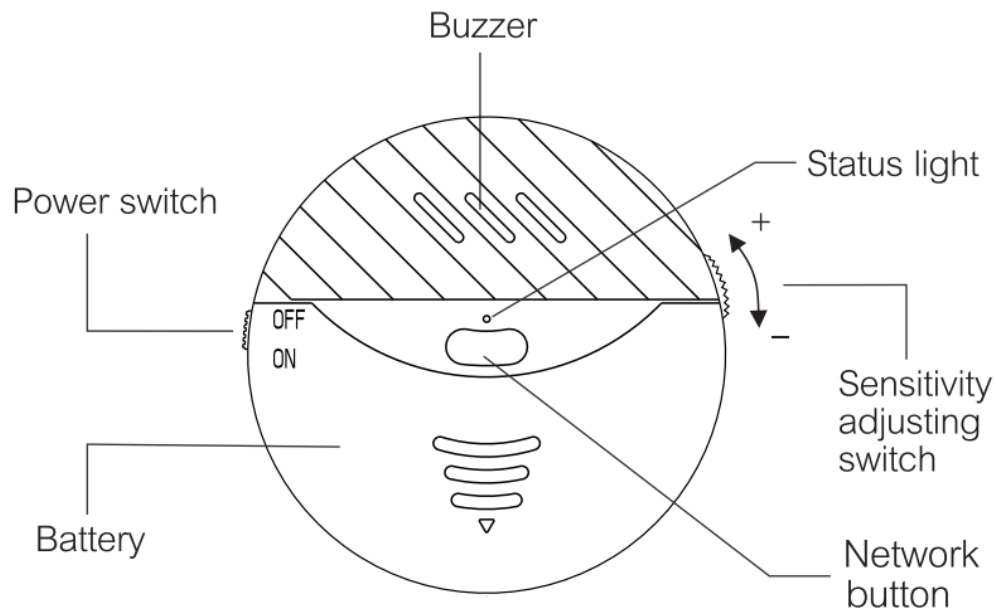


Specification

WIFI: 802.11b/g/n
Network: 2.4GHz
Working voltage: 3V
Battery: 2*AAA batteries
Standby current: Clouet
Working humidity: 95%. ice-free
Storage temperature: 0t— 50t
Decibel : 130dB
Low battery remind: $2.3V \pm 0.2V$
Size: 74*13mm
G.W.: 58g

How to use

1. Pull out the insulation sheet.
2. Turn the power switch to “on”.
3. Press and hold network button for 3s, Led light is flashing quickly and then enter the distribution state.
4. Vibration sensitivity adjustment: switch upward, sensitivity increased, switch downward, sensitivity decreased.



Installation

1. Put the double-sided adhesive tap on the back of the alarm.
2. Mount alarm on the window or door with the sticker.
3. Wipe the dust and other particles clean with a cleaning sprayer before installation.



Download App

1. ISO diphone: Download "Smart Life" from Googleplex.
2. Android: Download "Smart Life" from app store.
3. Open the Smart Life app and create a new account.
4. Register and log in.



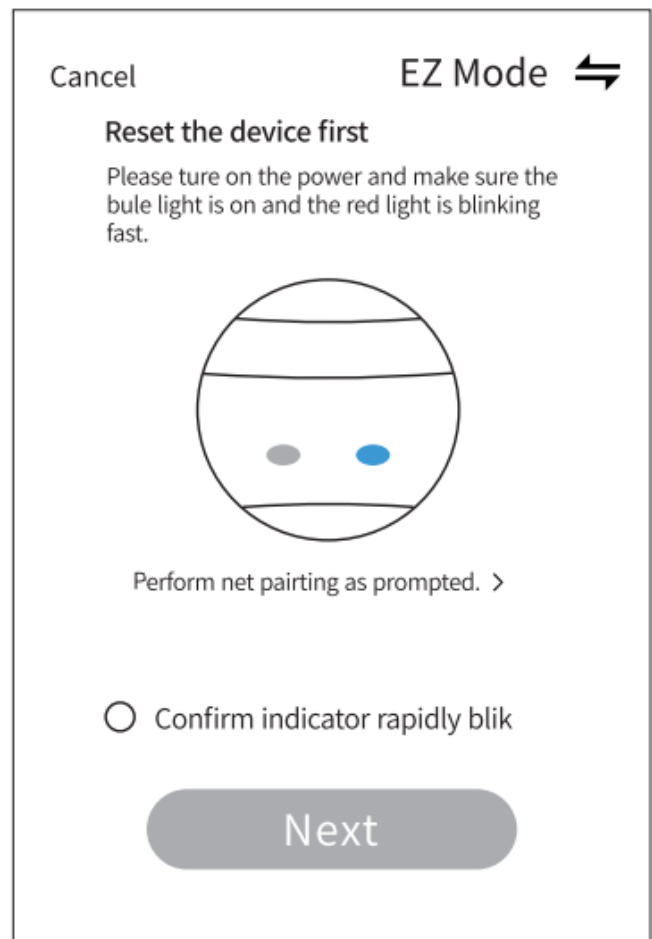
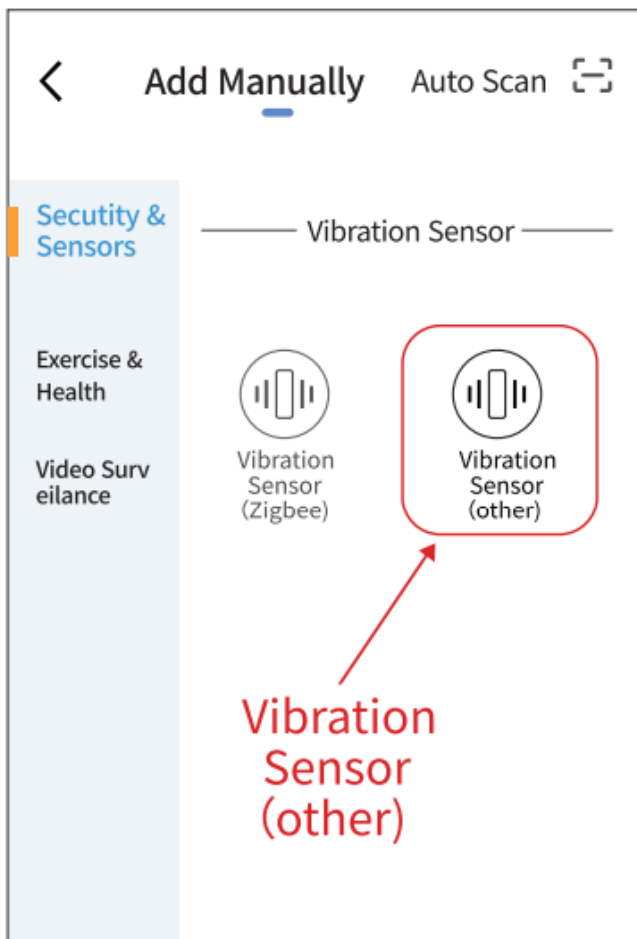
<https://smartapp.tuya.com/smartlife>

Connection instruction

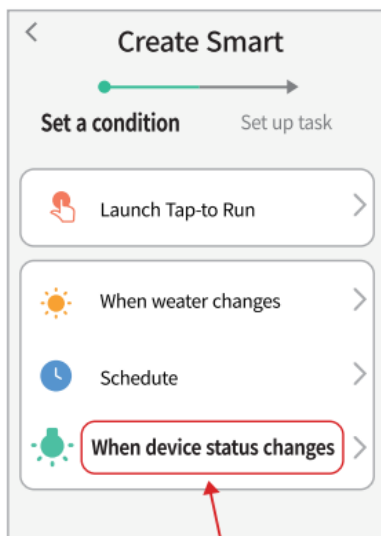
Make sure your smart phone connect to the WIFI and open GPS positioning. Only 2.4g WIFI is supported.

1. Open the app and Click “Add device” , or click “+” in the upper right to add device.
2. In the manual interface select “Vibration Sensor(other)” in the list of “security & Sensors” and go to next step.
3. Press and hold the network button for 3-5 seconds. the LED green light is flashing quickly.
4. Click ‘Confirm indicator flash” to enter WIFI name and password and then confirm connection.
5. After the connection is completed . click “completion the application interface of the mobile phone .and the successful connection will enter the device interface.

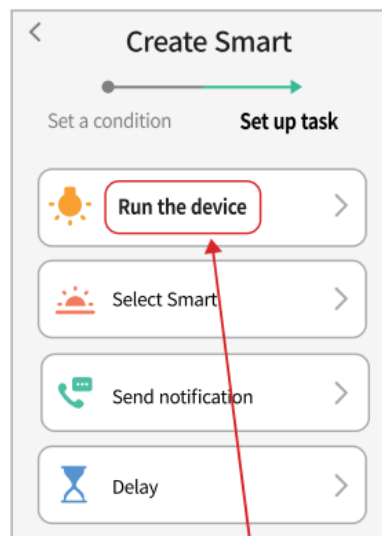
Linkage Instruction



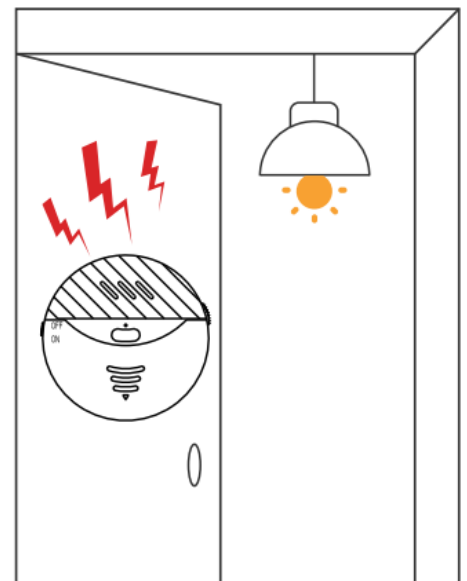
1. Open the 'Smart Life' app and click "Smart" at the bottom of the interface to enter the setting interface.
2. Click "+" in the upper right , the first step selects the automation condition, and the second step set the task.



Step 1:
Set the condition



Step 2: Set task



Case: linkage Instruction,
light will be turned on
when the vibration was
detected

Notification setting

1. Select "me" in the lower right of the Smart Life app to enter the account Setting interface.
2. Click "Setting" and select "Sound".
3. Click "App Notification" to open the "Push message Setting".
4. Mobile Application management, smart life app "Notification Management" open 'Allow notification'.

Sharing equipment

1. You can share the vibration door alarm with your family. and they will receive the message of alarm.
2. Select the device on the Smart Life app and click "!" in the upper right of the device interface to enter the door alarm interface.
3. Select 'Share Device'. click 'Add Share' to enter the Shared account. and then press "Complete".

Low Battery & replace battery

1. When the battery voltage is lower than $2.3V \pm 0.2V$. the device will send a notification to the users mobile phone through Wi-Fi.
2. When the battery power is too low. the new MA battery should be replaced in time.
3. When it is necessary to replace the battery. in order to get the best battery life. please replace the two MA batteries together. The replacement doesn't delete the door alarm Settings.

Battery Notices

1. Use a properly sized AAA battery.
2. Install the battery in the correct polarity. Incorrect polarity may damage the alarm.
3. Do not mix different types of batteries, such as alkaline. carbon. old and new batteries.
4. Don't try to charge non-rechargeable batteries.
5. Disassembled the battery. put the battery into the fire and throwed battery into the water are not allowed. Old batteries must be disposed of in accordance with local waste recovery regulations.

FAQ

1.Connection application failed ?

- a. Make sure that you are connected to a 2.4ghz WiFi network. This device does not support 5GHz WiFi network.
- b. Make sure to connect when the battery is fully charged.

2. No alarm when vibrating ?

Please make sure if the battery is low and installed correctly.

3. No notification when vibrating ?

Make sure that the alarm in the Wi-fi normal transceiver range.

4. Insensitivity when vibrating ?

The problem of sensitive selecting, switch up wad, the amplitude is large, switch downward, amplitude is small.

Warranty Card

Thank you for purchasing our product. Please fill in the details below and keep them safe.

User name.....

Contact.....

Model name.....

Contact add.....

Purchase add.....

Purchase date.....

Certificate : 

FCC Caution:

Any Changes or modifications not expressly approved by the party responsible for compliance could void the user's authority to operate the equipment.

This device complies with part 15 of the FCC Rules. Operation is subject to the following two conditions: (1) This device may not cause harmful interference, and (2) this device must accept any interference received, including interference that may cause undesired operation.

IMPORTANT NOTE:

Note: This equipment has been tested and found to comply with the limits for a Class B digital device, pursuant to part 15 of the FCC Rules. These limits are designed to provide reasonable protection against harmful interference in a residential installation. This equipment generates, uses and can radiate radio frequency energy and, if not installed and used in accordance with the instructions, may cause harmful interference to radio communications. However, there is no guarantee that interference will not occur in a particular installation. If this equipment does cause harmful interference to radio or television reception, which can be determined by turning the equipment off and on, the user is encouraged to try to correct the interference by one or more of the following measures:

- Reorient or relocate the receiving antenna.
- Increase the separation between the equipment and receiver.
- Connect the equipment into an outlet on a circuit different from that to which the receiver is connected.
- Consult the dealer or an experienced radio/TV technician for help.

FCC Radiation Exposure Statement:

This equipment complies with FCC radiation exposure limits set forth for an uncontrolled environment. This equipment should be installed and operated with minimum distance 20cm between the radiator& your body.



Documents / Resources

	FEIT Electric Vibration Alarm Break Smart Sensor at Menards [pdf] User Manual GLASSBREAKWF, SYW-GLASSBREAKWF, SYWGLASSBREAKWF, Vibration Alarm Break Smart Sensor at Menards, Vibration Alarm, Break Smart Sensor at Menards, Break Smart Sensor, Break Sensor, Smart Sensor
--	--

Manuals+