



FEIT ELECTRIC SL24-12 Smart Color Changing Filament String Light Installation Guide

[Home](#) » [Feit Electric](#) » FEIT ELECTRIC SL24-12 Smart Color Changing Filament String Light Installation Guide



FEIT

ELECTRIC

MODEL: SL24-12/RGBW/WFIL/AG

SMART-COLOR CHANGING FILAMENT STRING LIGHTS
Installation Guide

Contents

- [1 SL24-12 Smart Color Changing Filament String Light](#)
- [2 Getting Started:](#)
- [3 Remote Control](#)
- [4 Power Supply Control Box](#)
- [5 LIMITED WARRANTY](#)
- [6 INSTALLING STRING LIGHTS](#)
- [7 Documents / Resources](#)
 - [7.1 References](#)

SL24-12 Smart Color Changing Filament String Light

IMPORTANT RETAIN FOR FUTURE USE: READ CAREFULLY

When using electrical products, basic precautions should always be followed including the following:

- a. **READ AND FOLLOW ALL SAFETY INSTRUCTIONS**
- b. Connect this product to a Ground Fault Circuit Interrupting (GFCI) outlet. If one is not provided, contact a qualified electrician for proper installation.
- c. Do not mount or place near gas or electric heaters, fireplace, candles, or other similar sources of heat.
- d. Do not secure the wiring of the product with staples or nails, or place on sharp hooks or nails.
- e. Install only using the mounting means provided. f. Do not let lamps rest on the supply cord or on any wire.
- g. Do not use this product for other than its intended use.
- h. Do not hang ornaments or other objects from the cord, wire, or lamps.

- i. Do not close doors or windows on the product or extension cords as this may damage the wire insulation.
- j. Do not cover the product with cloth, paper or any material not part of the product when in use.
- k. This product has a polarized plug (one blade is wider than the other) as a feature to reduce the risk of electric shock. This plug will fit in a polarized outlet only one way if the plug does not fit fully in the outlet, reverse the plug. If it still does not fit, consult a qualified electrician. Do not use with an extension cord unless the plug can be fully inserted. Do not alter or replace the plug.
- l. Keep lamps away from any combustible surface.
- m. Read and follow all instructions that are on the product or provided with the product.
- n. This product should be installed out of the reach of children.
- o. String Lights should be installed so that bulbs are facing down ONLY.
- p. Do not secure String Lights to buildings or other structural supports using nails, staples or other sharp, conducting materials. DO NOT DAMAGE THE WIRE.
- q. Do not submerge.



Only supports 2.4GHz Wi-Fi networks



Works with

Feit Electric app

SAVE THESE INSTRUCTIONS

CAUTION:

1. To avoid risk of shock, always make sure the product is unplugged from the electrical outlet before assembling, disassembling, installing, relocating, servicing or cleaning it.
2. Do not overload. This string light is rated for 7.5 Watts. Connect other string lights end-to-end for a maximum of 10 total string lights.
3. Do not use with extension cord near water or where water may accumulate. Keep at least 4.8 m/16 ft from pools and spas. Keep plugs and receptacles dry. Do not submerge.

Model Number: SL24-12/RGBW/WFIL/AG

Connecting Sets End-to-End.

When multiple products are connected together do not exceed maximum wattage on the cord tag near the connected product's receptacle.

BATTERY WARNING:

Risk of fire, explosion, and burns. Do not disassemble, crush, heat above 100°C/212° F or incinerate. REPLACE ONLY WITH two AAA batteries. DISPOSE OF USED BATTERY PROMPTLY. KEEP AWAY FROM CHILDREN. DO NOT DISASSEMBLE AND DO NOT DISPOSE OF IN FIRE.

When replacing battery, ensure the new battery is installed correctly with regard to polarity (+ and -) as shown on remote.

WARNING:

- **WARNING** – KEEP BATTERIES OUT OF REACH OF CHILDREN
- Swallowing may lead to serious injury in as little as 2 hours or death, due to chemical burns and potential perforation of the esophagus.
- If you suspect your child has swallowed or inserted a button battery, immediately seek urgent medical assistance.

- Examine devices and make sure the battery compartment is correctly secured, e.g. that the screw or other mechanical fastener is tightened. Do not use if compartment is not secure.
- Dispose of used button battery immediately and safely. Flat battery can still be dangerous.

Getting Started:

1. Download the Feit Electric app on your smart device

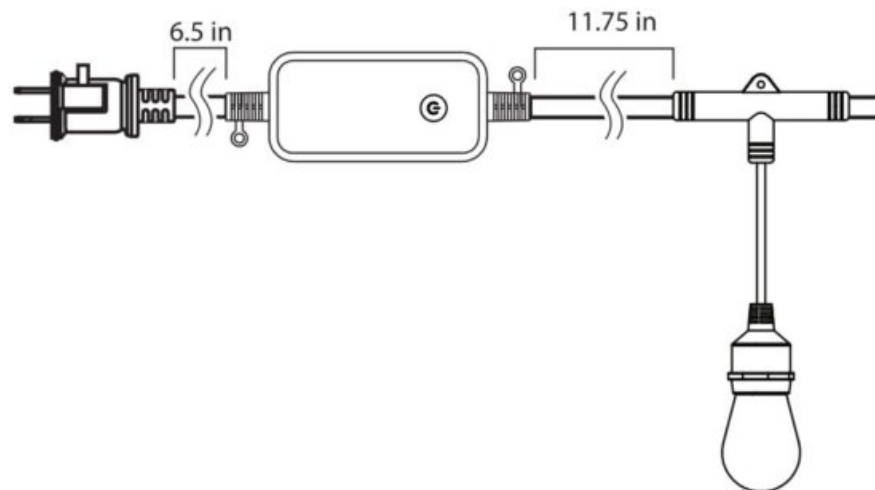


2. Install your Smart String Lights

See "Installing String Lights" Section on page 4. Inter-connect additional sets, up to 10 sets.

3. Plug in your Smart String Lights

Plug the Smart String Lights into an outdoor rated GFCI receptacle.



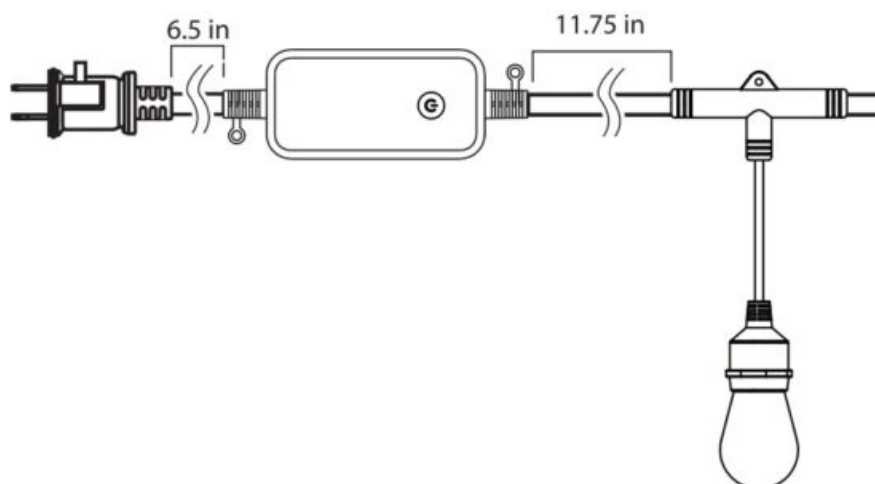
WARNING: These products may represent a possible shock or fire hazard if improperly installed or attached in any way. Products should be installed in accordance with the owners manual, current electrical codes and/or the current National Electric Code (NEC).

You are now ready to use the String Lights via RF Remote See "RF Remote Control" section for more details.

To activate smart features proceed to steps 4 & 5.

4. Pair your device

Press and hold for 5 seconds when lights are On to enter pairing mode. Lights will blink.

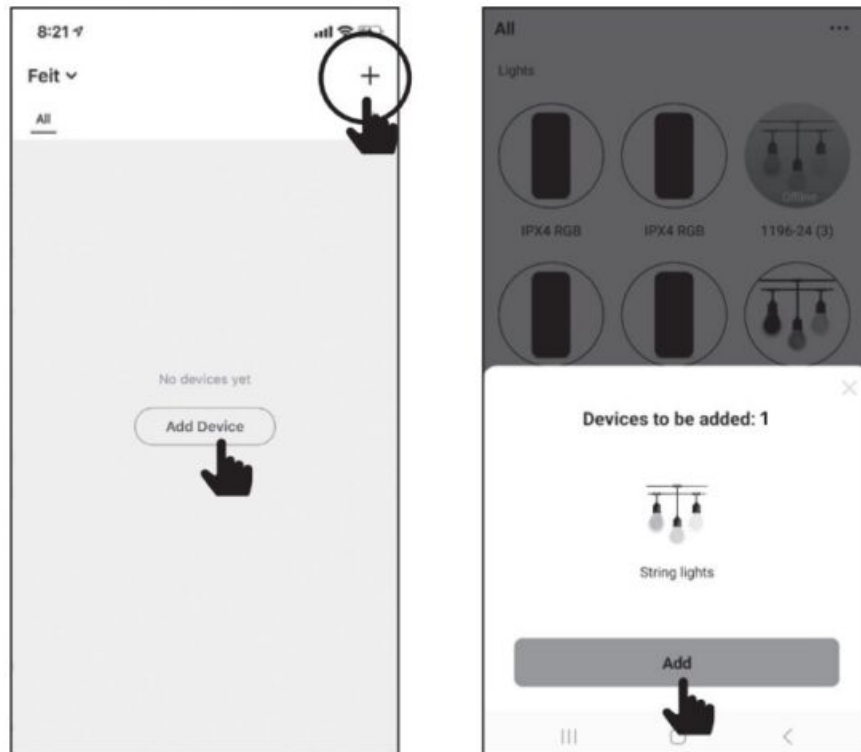


String Light should automatically enter pairing mode on first power on.

5. Launch and use the Feit Electric app to complete the set up

Tap Add Device or the + sign, then select String Lights and confirm. You will be prompted to enter your Wi-Fi network and password.

Be sure to connect to a 2,4 GHz Wi-Fi network that covers your installation location.



(Optional) Connect to Google Assistant or Alexa using the in App guide



Tap ... icon

Choose **Alexa**
or **Google**

Need Help?

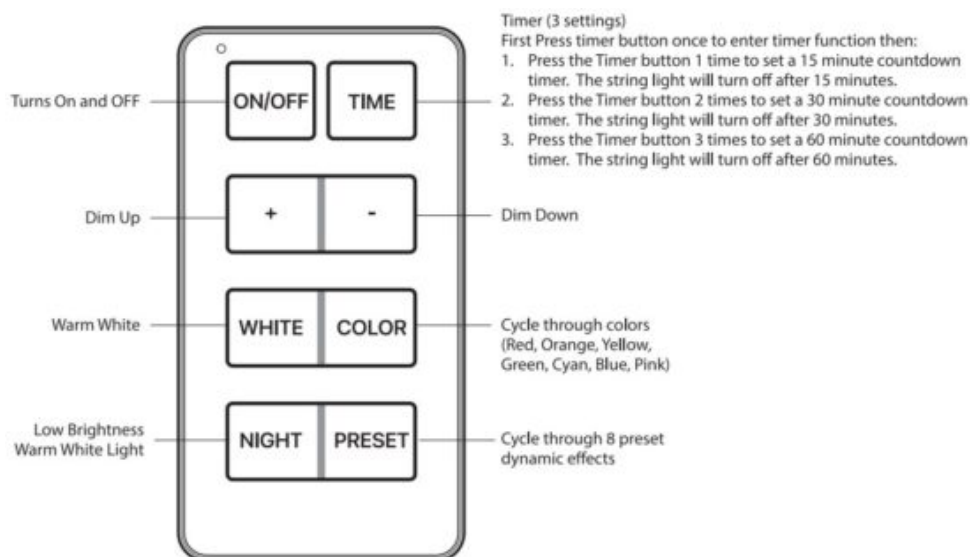


Thank you for your purchase Questions, comments or feedback? We'd love to hear from you.
Visit feit.com/help for support or connect with us:

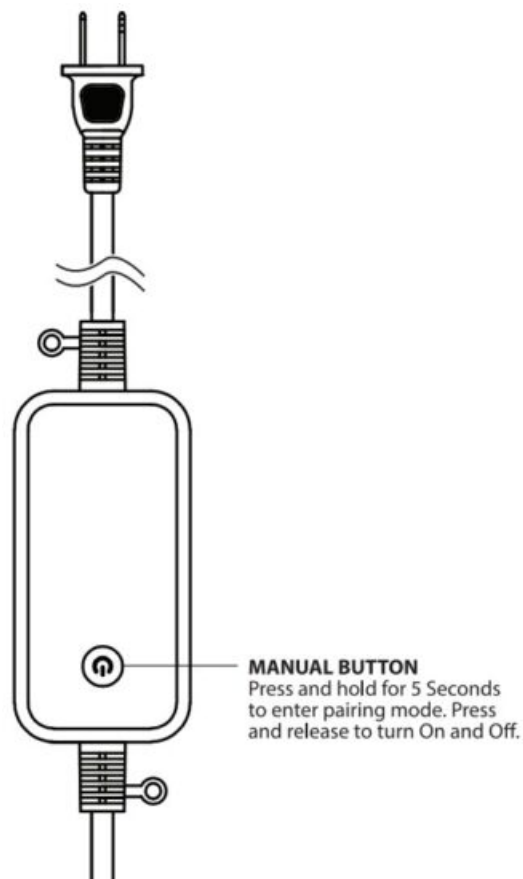
		
@FeitElectric	@FeitElectricInc	feitelectriclighting

Remote Control

SL2412RGBWWFIL/REM



Power Supply Control Box



PAIRING/ UNPAIRING RF REMOTE

(to control multiple sets)

Pairing

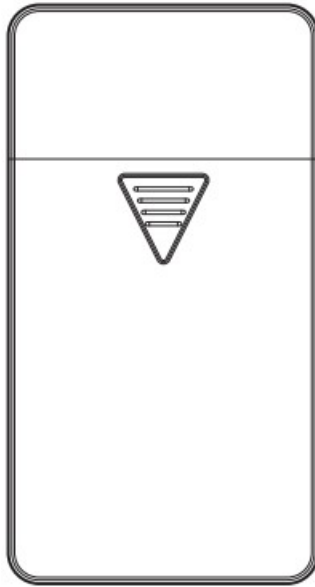
Press and hold ON/OFF button within 30 secs of power on when product is not in smart pairing mode (Red flashing light). Keep holding ON/OFF button light will flash white on off then back to previous setting when pairing is successful.

Un-Pairing

Press and hold ON/OFF and (-) button to unpair. Light will flash white on off then back to previous setting when unpairing is successful.

REPLACING BATTERY

Always purchase the correct size and grade of battery most suitable for the intended use. Clean the battery contacts and also those of the device prior to battery installation. Ensure the battery is installed correctly with regard to polarity (+ and -). Remove battery from equipment which is not to be used for an extended period of time. Remove used battery promptly.



For additional remote controls please contact Feit Electric at www.feit.com

TROUBLESHOOTING TIPS – WI-FI

If you are having difficulty connecting:

- Make sure the Wi-Fi network is a 2.4 GHz network. Smart String Lights will not connect to a 5 GHz network.
- Test your Wi-Fi network with other devices such as your phone to make sure it is operating properly.
- The Wi-Fi connection may not have good coverage during set up. Try moving the Smart String Lights closer to your Wi-Fi router.
- Your Wi-Fi network password is case sensitive, make sure you are entering correctly.

Devices plugged into your Smart Wi-Fi Plug must be ON in order to be controlled via the mobile app. Please also check the App User Guide for more information

LIMITED WARRANTY

This product is warranted to be free from defects in workmanship and materials for up to 1 year from date of purchase. If the product fails within the warranty period, please visit feit.com/help for help. REPLACEMENT OR REFUND IS YOUR SOLE REMEDY. EXCEPT TO THE EXTENT PROHIBITED BY APPLICABLE LAW, ANY IMPLIED WARRANTIES ARE LIMITED IN DURATION TO THE DURATION OF THIS WARRANTY. LIABILITY FOR INCIDENTAL OR CONSEQUENTIAL DAMAGES IS HEREBY EXPRESSLY EXCLUDED. Some states and provinces do not allow the exclusion of incidental or consequential damages, so the above limitation or exclusion may not apply to you. This warranty gives you specific legal rights, and you may also have other rights which vary from state to state or province to province.

FCC Radiation Exposure Statement:

This equipment complies with FCC radiation exposure limits set forth for an uncontrolled environment. In order to avoid the possibility of exceeding the FCC radio frequency exposure limits, the device has been evaluated to meet general RF exposure requirement. The device can be used in portable exposure condition without restriction.

This device complies with part 15 of the FCC Rules. Operation is subject to the following two conditions: (1) This device may not cause harmful interference, and (2) this device must accept any interference received, including interference that may cause undesired operation. This equipment has been tested and found to comply with the limits for a Class B digital device, pursuant to part 15 of the FCC Rules. These limits are designed to provide reasonable protection against harmful interference in a residential installation. This equipment generates, uses and can radiate radio frequency energy and, if not installed and used in accordance with the instructions, may cause harmful interference to radio communications. However, there is no guarantee that interference will not

occur in a particular installation. If this equipment does cause harmful interference to radio or television reception, which can be determined by turning the equipment off and on, the user is encouraged to try to correct the interference by one or more of the following measures: Reorient or relocate the receiving antenna. Increase the separation between the equipment and receiver. Connect the equipment into an outlet on a circuit different from that to which the receiver is connected. Consult the dealer or an experienced radio/TV technician for help. Any changes or modifications not expressly approved by the manufacturer could void the user's authority to operate the equipment.

Supplier's Declaration of Conformity:

47 CFR § 2.1077 Compliance Information

Responsible Party:

Feit Electric Company

4901 Gregg Road,

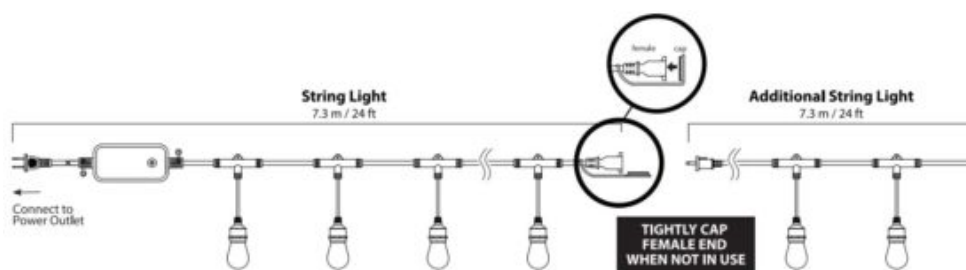
Pico Rivera, CA 90660, USA

www.feit.com

Unique Identifier: SL24-12/RGBW/WFIL/AG

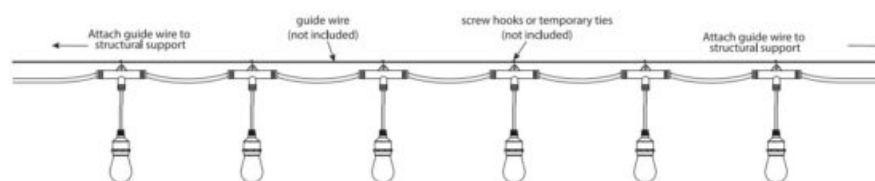
The performance specifications (life hours) printed on this manual should only be considered an approximation of expected performance.

INSTALLING STRING LIGHTS

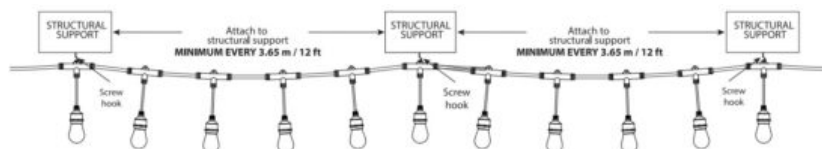


INSTALLATION METHODS

1. Using a guide wire with screw hooks or temporary ties (not included)



2. Attached to a structure



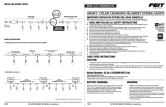
SCREW HOOKS OR TEMPORARY TIES NOT INCLUDED. DRAWINGS NOT TO SCALE.

FEIT ELECTRIC COMPANY

PICO RIVERA, CA

www.feit.com

Documents / Resources



[FEIT ELECTRIC SL24-12 Smart Color Changing Filament String Light](#) [pdf] Installation Guide
SYW-SL2412CCRM, SYWSL2412CCRM, SL2412CCRM, SL24-12 Smart Color Changing Filament String Light, SL24-12, Smart Color Changing Filament String Light, Color Changing Filament String Light, Changing Filament String Light, Filament String Light, String Light, Light

References

- [User Manual](#)

[Manuals+](#), [Privacy Policy](#)

This website is an independent publication and is neither affiliated with nor endorsed by any of the trademark owners. The "Bluetooth®" word mark and logos are registered trademarks owned by Bluetooth SIG, Inc. The "Wi-Fi®" word mark and logos are registered trademarks owned by the Wi-Fi Alliance. Any use of these marks on this website does not imply any affiliation with or endorsement.