



FEIT ELECTRIC
REV005 Color
Changing 10FT
Smart Chasing
Neon Flex I



FEIT ELECTRIC REV005 Color Changing 10FT Smart Chasing Neon Flex Installation Guide

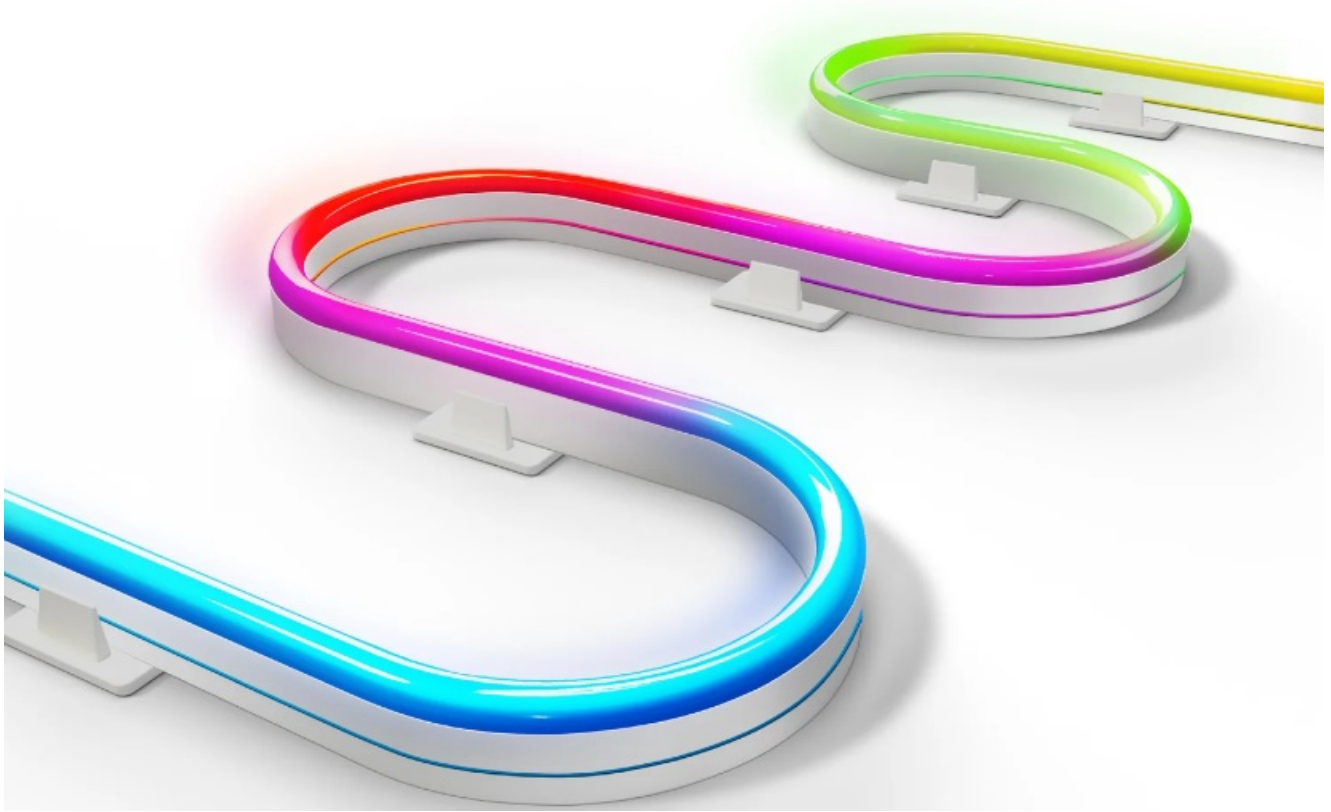
[Home](#) » [Feit Electric](#) » FEIT ELECTRIC REV005 Color Changing 10FT Smart Chasing Neon Flex Installation Guide 

Contents

- [1 FEIT ELECTRIC REV005 Color Changing 10FT Smart Chasing Neon Flex](#)
- [2 IMPORTANT SAFETY INSTRUCTIONS](#)
- [3 LIMITED WARRANTY.](#)
- [4 LIMITED WARRANTY.](#)
- [5 Getting Started:](#)
- [6 TROUBLESHOOTING TIPS CONNECTING TO WI-FI](#)
- [7 Documents / Resources](#)
 - [7.1 References](#)
- [8 Related Posts](#)



FEIT ELECTRIC REV005 Color Changing 10FT Smart Chasing Neon Flex



MODEL: NF10/CHASE/AG

Color Changing -10FT
Smart Chasing Neon Flex

Quick Install Guide

WiFi

Only supports 2.4GHz Wi-Fi networks

ELECTRICAL RATINGS:

INPUT: 100-240VAC 50/60HZ, 0.6A MAX

OUTPUT: 24VDC, 1.0A 24W

INDOOR USE

Supplier's Declaration of Conformity: 47 CFR § 2.1077

Compliance Information

Responsible Party:

Feit Electric Company 4901 Gregg Road, Pico Rivera, CA 90660, USA [562-463-2852](tel:562-463-2852)

Unique Identifier: NF10/CHASE/AG

IMPORTANT SAFETY INSTRUCTIONS

When using electrical products, basic precautions should always be practiced including the following:

1. READ AND FOLLOW ALL SAFID INSTRUCTIONS.
2. Maximum ambient temperature around the adapter must not exceed 40°C
3. Read and follow all instructions that are on the product or provided with the product.
4. The power supply is certified according to the relevant safety standards UL 131 o.

5. The output power taken from the power supply must not exceed the rating given on the adapter.
6. The adapter is not intended to be repaired by service personnel in case of failure or component defect (unit can be thrown away).
7. The disconnection from line voltage is made by main plug.
8. This power unit is intended to be correctly orientated in a vertical or floor mount position.
9. Unplug from outlet before installing the product.
10. Do not use an extension cord to supply power to the neon flex.
11. Do not use in a bathroom.
12. This product is NOT a toy.
13. To avoid damage, use only with the power supply provided.
14. Do not open the product. Use only as intended.
15. Do not roll up the product when using. Spread out to full length before connecting power supply.
16. Do not operate if any component is damaged.

SAVE THESE INSTRUCTIONS

This manual contains important safety and operating instructions to power the unit.

Controller Module Button

- Single click – On/Off.
- Press and hold for 5 seconds to enter Wi-Fi pairing mode or reset.

LIMITED WARRANTY.

This product is warranted to be free from defects in workmanship and materials for up to 1 year from date of purchase. If the product fails within the warranty period, please contact Feit Electric at [feit.com/help](https://www.feit.com/help) for help. REPLACEMENT OR REFUND IS YOUR SOLE REMEDY. EXCEPT TO THE EXTENT PROHIBITED BY APPLICABLE LAW, ANY IMPLIED WARRANTIES ARE LIMITED IN DURATION TO THE DURATION OF THIS WARRANTY. LIABILITY FOR INCIDENTAL OR CONSEQUENTIAL DAMAGES IS HEREBY EXPRESSLY EXCLUDED. Some states and provinces do not allow the exclusion of incidental or consequential damages, so the above limitation or exclusion may not apply to you. This warranty gives you specific legal rights, and you may also have other rights which vary from state to state or province to province.

This device complies with part 15 of the FCC Rules. Operation is subject to the following two conditions:

1. This device may not cause harmful interference, and
2. this device must accept any interference received, including interference that may cause undesired operation.

Note: This equipment has been tested and found to comply with the limits for a Class B digital device, pursuant to part 15 of the FCC Rules. These limits are designed to provide reasonable protection against harmful interference in a residential installation. This equipment generates, uses and can radiate radio frequency energy and, if not installed and used in accordance with the instructions, may cause harmful interference to radio communications. However, there is no guarantee that interference will not occur in a particular installation. If this equipment does cause harmful interference to radio or television reception, which can be determined by turning the equipment off and on, the user is encouraged to try to correct the interference by one or more of the following measures:

- Reorient or relocate the receiving antenna. Increase the separation between the equipment and receiver.
- Connect the equipment into an outlet on a circuit different from that to which the receiver is connected.

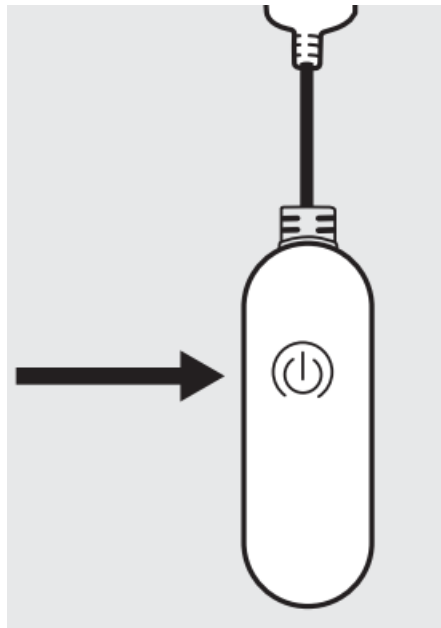
- Consult the dealer or an experienced radio/TV technician for help.
- Any changes or modifications not expressly approved by the manufacturer could void the user's authority to operate the equipment. www.feit.com.

Radiation Exposure Statement

This device complies with FCC radiation exposure limits set forth for an uncontrolled environment. This device should be installed and operated with a minimum distance of 20cm between the radiator and your body.

Controller Module Button

- Single click – On/Off.
- Press and hold for 5 seconds to enter Wi-Fi pairing mode or reset.



LIMITED WARRANTY.

This product is warranted to be free from defects in workmanship and materials for up to 1 year from date of purchase. If the product fails within the warranty period, please contact Feit Electric at feit.com/help for help. REPLACEMENT OR REFUND IS YOUR SOLE REMEDY. EXCEPT TO THE EXTENT PROHIBITED BY APPLICABLE LAW, ANY IMPLIED WARRANTIES ARE LIMITED IN DURATION TO THE DURATION OF THIS WARRANTY. LIABILITY FOR INCIDENTAL OR CONSEQUENTIAL DAMAGES IS HEREBY EXPRESSLY EXCLUDED. Some states and provinces do not allow the exclusion of incidental or consequential damages, so the above limitation or exclusion may not apply to you. This warranty gives you specific legal rights, and you may also have other rights which vary from state to state or province to province.

Getting Started:

WARNING: These products may represent a possible shock or fire hazard if improperly installed or attached in any way. Products should be installed in accordance with this install guide, current electrical codes and/or the current National Electric Codes.

CAUTION

1. Use only insulated staples or plastic ties to secure cords.
2. Route and secure cords that they will not be pinched or damaged when furniture is pushed to the wall.

3. When mounting lights on furniture ensure product caution remains visible
4. Not intended for recessed installation in ceilings.
5. Electrical codes do not permit cords to be concealed where damage to insulation may go unnoticed.

To prevent fire danger, do not run cord behind walls, ceilings, soffits, or cabinets where it may be inaccessible for examination. Cords should be visually examined periodically and immediately replaced when any damage is noted. Only use the control provided with or specified by the instructions to control this neon flex. This product will not operate properly when connected to a dimmer or dimming control.

1. Download the Feit Electric App on your Smart Device



2. Connect the Power Supply

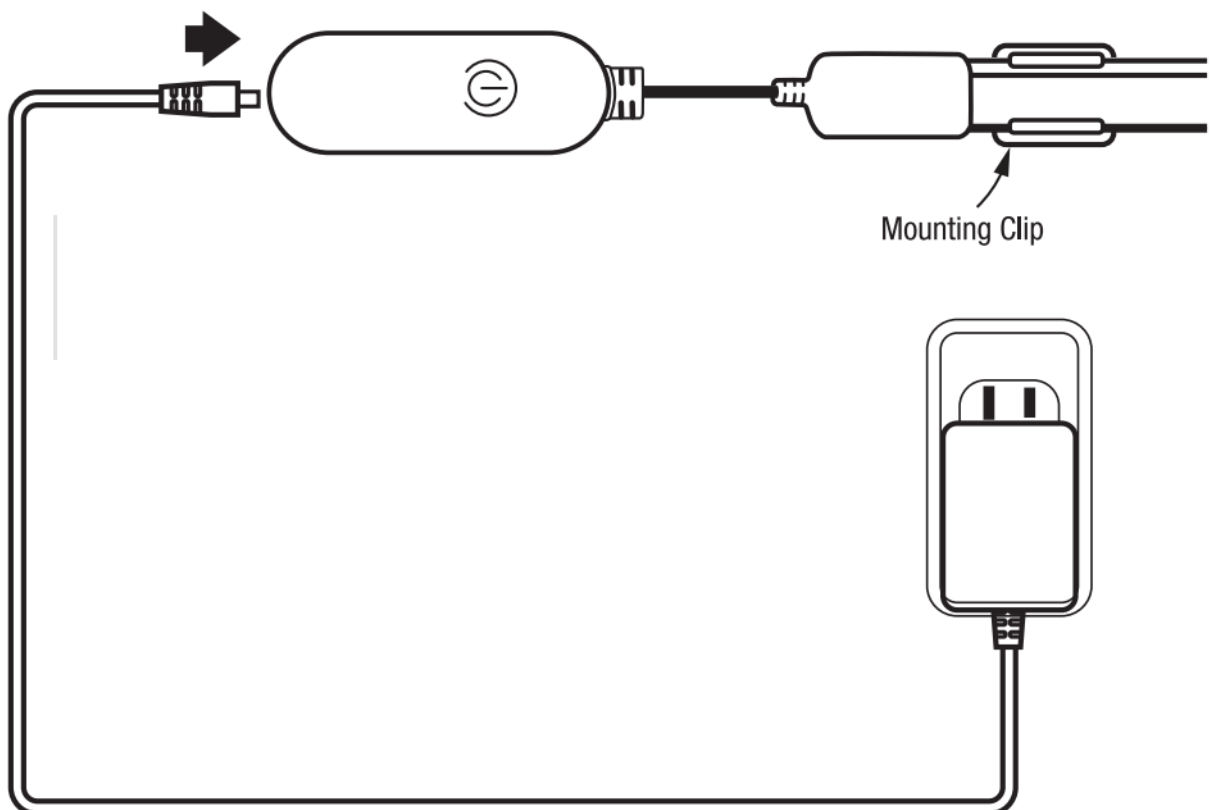
Connect the power supply plug to the controller module button as shown in the image below.

Use provided double-sided tape to adhere the back Mounting Clip of controller module to mounting surface.

Use the mounting clip as shown above.

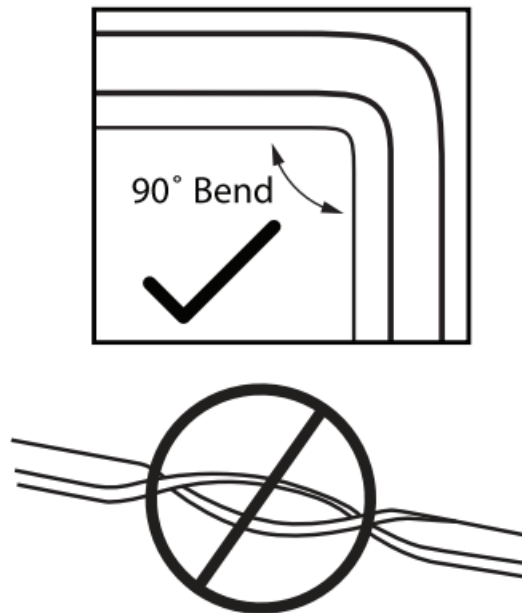
- Connect power supply to wall outlet.
- Pair to Wi-Fi following on-screen Feit Electric App.

Press and hold for about 5 seconds to enter pairing mode. The neon flex will flash red.



3. Prepare the Neon Flex

- Clean the mounting area thoroughly (surface must be free of dust, dirt, or grease).
- Avoid areas where the neon flex can be pierced which may damage the LEDs.
- Avoid removing and relaying the neon flex multiple times as the adhesive may wear off.

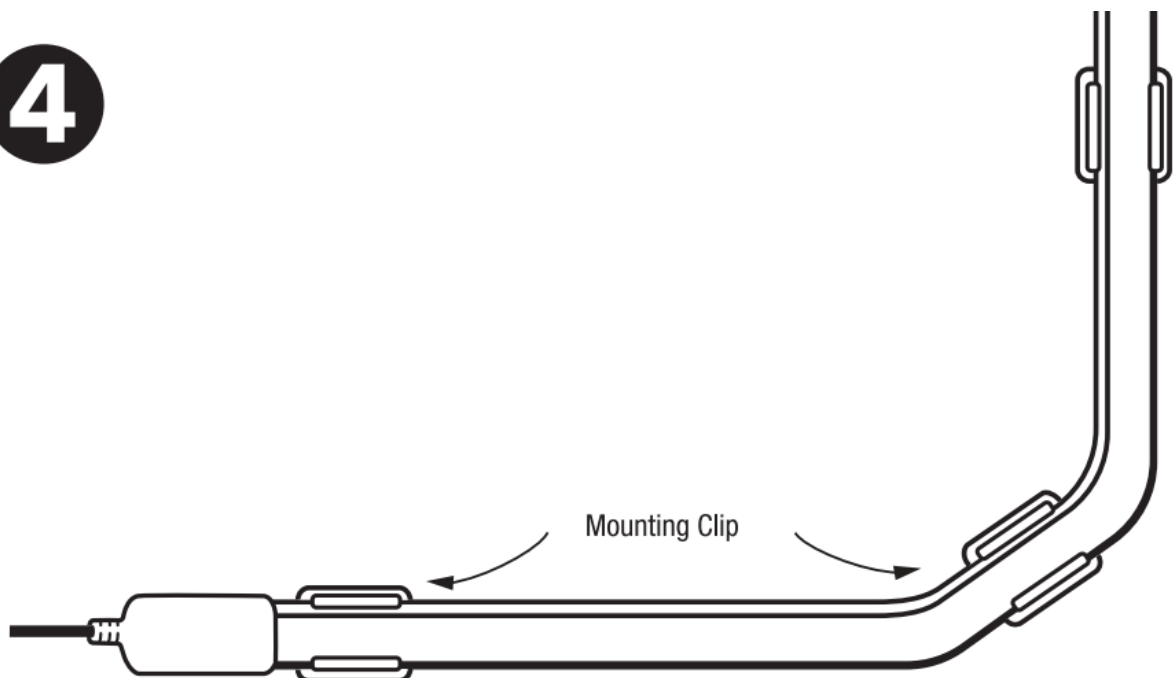


4. Mount the Neon Flex

Unroll the neon flex and place near mounting location. Ensure power supply and controller can reach to the start of the neon flex. Do not connect to power yet.

- Peel adhesive tape from back of the neon flex to position light on mounting surface.
- Screw in mounting clips (required for all long term installations).

4



This neon flex light uses permanent tape and may cause surface damage if removed. Not recommended for mounting on brick or concrete.

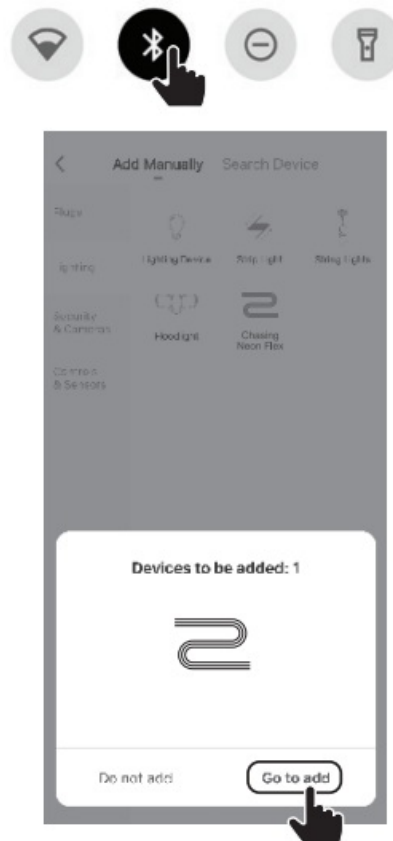
Feit Electric is not responsible for damage to mounted surfaces.

5. Turn on Bluetooth and Open the Feit Electric APP to Complete the Set Up.

Tap Add Device or the + sign. The device name(s) will pop up on the Feit app. Tap on Go to add, then select the device to add.

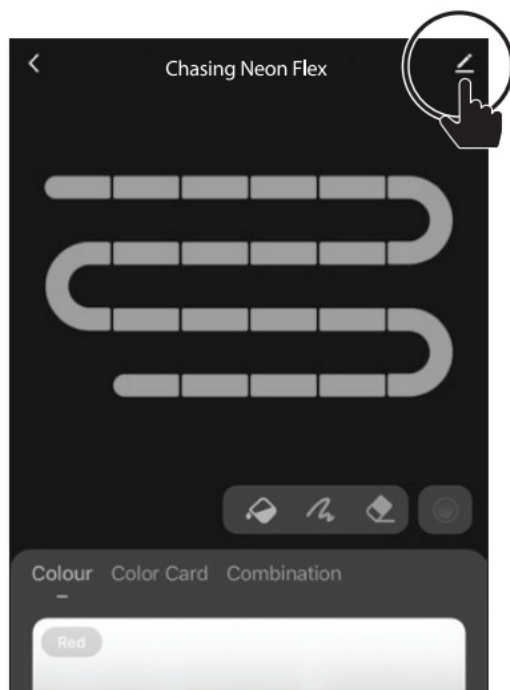
You will be prompted to enter your Wi-Fi network name and password.

Only one device may be added at a time using Bluetooth set up. Repeat Step 5 to add additional devices. Alternative setup options and help instructions are available in the Feit Electric app.

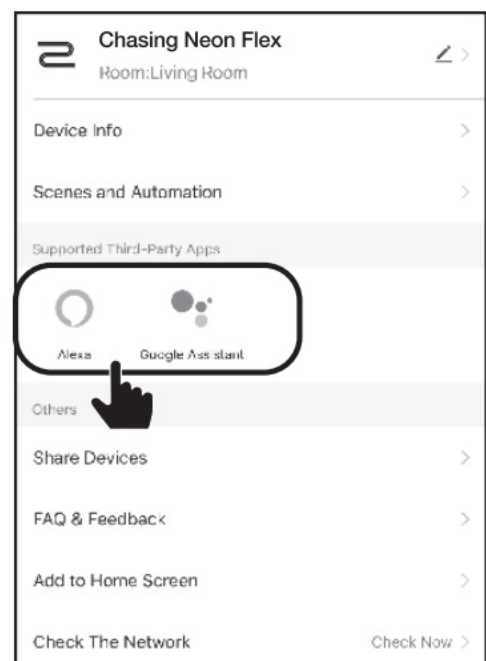


Be sure to connect to a 2.4 GHz Wi-Fi network that covers your installation location.

6. (Optional) Connect to Google Assistant or Alexa using the in-App Guide



Tap the top-right icon



Choose **Alexa**
or **Google Assistant**

TROUBLESHOOTING TIPS CONNECTING TO WI-FI

If you are having difficulty connecting:

- Make sure the Wi-Fi network is a 2.4 GHz network. Neon Flex will not connect to a 5 GHz network.
- Test your Wi-Fi network with other devices such as your phone to make sure it is operating properly.
- The Wi-Fi connection may not have good coverage during set up. Try moving the Neon Flex closer to your Wi-Fi router.

For more information, check the App User Guide and visit www.feit.com/help




Need Help?

For 24/7 customer support, visit feit.com/help

FOR DETAILED INSTRUCTIONS ON SMART FEATURES SEE THE APP USER GUIDE.

Documents / Resources

	<p>FEIT ELECTRIC REV005 Color Changing 10FT Smart Chasing Neon Flex [pdf] Installation Guide</p> <p>REV005 Color Changing 10FT Smart Chasing Neon Flex, Color Changing 10FT Smart Chasing Neon Flex, Changing 10FT Smart Chasing Neon Flex, Smart Chasing Neon Flex, Chasing Neon Flex, Neon Flex</p>
--	---

References

- [User Manual](#)

[Manuals+](#), [Privacy Policy](#)

This website is an independent publication and is neither affiliated with nor endorsed by any of the trademark owners. The "Bluetooth®" word mark and logos are registered trademarks owned by Bluetooth SIG, Inc. The "Wi-Fi®" word mark and logos are registered trademarks owned by the Wi-Fi Alliance. Any use of these marks on this website does not imply any affiliation with or endorsement.