

FEIT ELECTRIC LVSL24-12-RGBW Smart Color Changing LED String Lights



FEIT ELECTRIC LVSL24-12-RGBW Smart Color Changing LED String Lights Installation Guide

[Home](#) » [Feit Electric](#) » FEIT ELECTRIC LVSL24-12-RGBW Smart Color Changing LED String Lights Installation Guide 

Contents

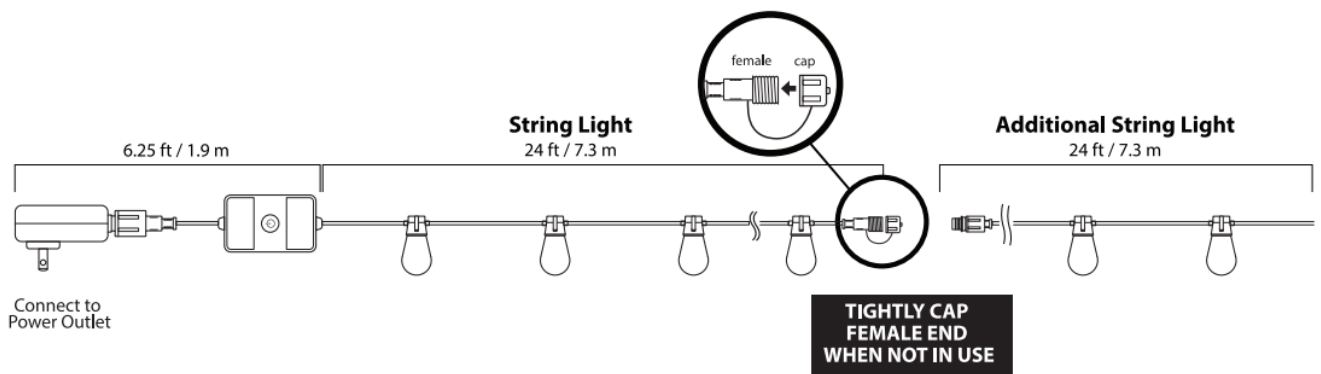
- [1 FEIT ELECTRIC LVSL24-12-RGBW Smart Color Changing LED String Lights](#)
- [2 INSTALLING STRING LIGHTS](#)
- [3 SMART- COLOR CHANGING LED STRING LIGHTS](#)
- [4 Getting Started](#)
- [5 RF remote control](#)
- [6 REPLACING BATTERY](#)
- [7 TROUBLESHOOTING TIPS – WI-FI](#)
- [8 Documents / Resources](#)
 - [8.1 References](#)



FEIT ELECTRIC LVSL24-12-RGBW Smart Color Changing LED String Lights

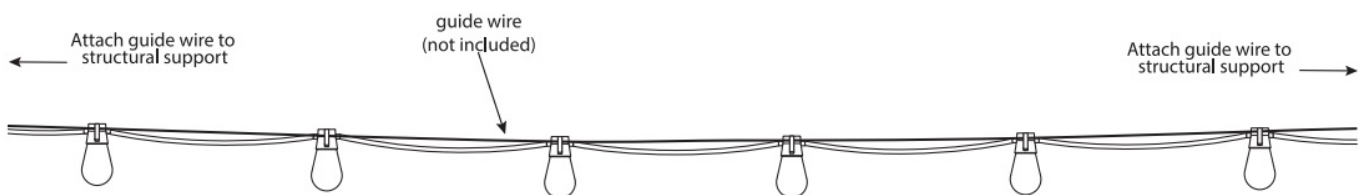


INSTALLING STRING LIGHTS



INSTALLATION METHODS

1. Using a guide wire with clips on the sides of lights.



CONNECTING MULTIPLE SETS

MAXIMUM WATTAGE	NUMBER OF LIGHT STRINGS
14 WATTS	DO NOT EXCEED MORE THAN 2 SETS

TROUBLESHOOTING

1. Confirm power is turned On.
2. Before performing any troubleshooting, make sure to unplug string light completely from power supply.
3. Please contact our customer service department should you need further assistance.

TO REDUCE THE RISK OF FIRE: Do not replace the attachment plug. It contains a safety device (fuse) that should not be removed. Discard product if the attachment plug is damaged.

SMART- COLOR CHANGING LED STRING LIGHTS

IMPORTANT RETAIN FOR FUTURE USE: READ CAREFULLY

When using electrical products, basic precautions should always be followed including the following:

a. READ AND FOLLOW ALL SAFETY INSTRUCTIONS



Only supports
2.4GHz Wi-Fi
networks



Works with
Feit Electric app

- b.** If used outdoors or with water present, connect this product to a Ground Fault Circuit Interrupting (GFCI) outlet. If one is not provided, contact a qualified electrician for proper installation.
 - c.** Do not mount or place near gas or electric heaters, fireplaces, candles, or other similar sources of heat.
 - d.** Do not secure the wiring of the product with staples or nails, or place on sharp hooks or nails.
 - e.** Install only using the mounting means provided.
 - f.** Do not let lamps rest on the supply cord or on any wire.
 - g.** Do not use this product for other than its intended use.
 - h.** Do not hang ornaments or other objects from the cord, wire, or lamps.
 - i.** Do not close doors or windows on the product or extension cords as this may damage the wire insulation.
 - j.** Do not cover the product with cloth, paper or any material not part of the product when in use.
 - k.** Keep lamps away from any combustible surface.
- Read and follow all instructions that are on the product or provided with the product.
- m.** This product should be installed out of the reach of children.
 - n.** String Lights should be installed so that bulbs are facing down ONLY.
 - o.** Do not secure String Lights to buildings or other structural supports using nails, staples or other sharp,

conducting materials. DO NOT DAMAGE THE WIRE.

p. Do not submerge.

SAVE THESE INSTRUCTIONS

CAUTION:

1. To avoid risk of shock, always make sure the product is unplugged from the electrical outlet before assembling, disassembling, installing, relocating, servicing or cleaning it.
2. Do not overload. This string light is rated for 7 Watts. Connect up to two total string lights end-to-end for a maximum of 14 Watts total.
3. Do not use with an extension cord near water or where water may accumulate. Keep at least 4.8 m / 16 ft from pools and spas. Keep plugs and receptacles dry. Do not submerge.

Model Number: LVSL24-12/RGBW/AG

Connecting Sets End-to-End.

Connect up to two sets together and do not exceed the lowest of the indicated maximum wattage on the cord tag near the connected product's receptacle.

BATTERY WARNING:

Risk of fire, explosion, and burns. Do not disassemble, crush, heat above 100° C / 212° F or incinerate. REPLACE ONLY WITH one CR2025 battery.

DISPOSE OF THE USED BATTERY PROMPTLY. KEEP AWAY FROM CHILDREN. DO NOT DISASSEMBLE AND DO NOT DISPOSE OF IN FIRE. When replacing battery, ensure the new battery is installed correctly with regard to polarity (+ and -) as shown on the remote.

CAUTION:

Dispose of used batteries promptly according to local recycling or waste regulations. Clean battery contacts and also device contacts prior to installing the battery. Ensure the battery is installed correctly with regard to polarity (+ and -). Remove the battery from the remote when not being used for an extended period of time. Remove the used battery promptly.

WARNING:

- **WARNING – KEEP REMOTE CONTROL BATTERIES OUT OF REACH OF CHILDREN**
- This product contains a button battery. If swallowed it could cause severe injury or death in just 2 hours. Seek medical attention immediately.
- If you suspect your child has swallowed or inserted a button battery, immediately seek urgent medical assistance.
- Examine devices and make sure the battery compartment is correctly secured, e.g. that the screw or other mechanical fastener is tightened. Do not use if compartment is not secure.
- Dispose of used button battery immediately and safely. Flat battery can still be dangerous.

Getting Started

1. Download the Feit Electric app on your smart device.

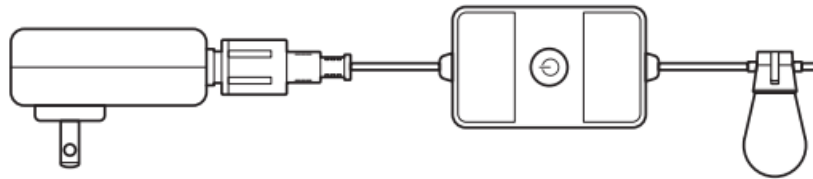


2. **Install your Smart String Lights**

See "Installing String Lights" Section. Interconnect additional sets, up to 2 sets.

3. **Plug in your Smart String Lights**

Plug the Smart String Lights into an outdoor-rated GFCI receptacle.



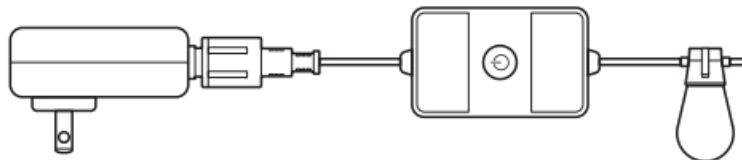
- **WARNING:** These products may represent a possible shock or fire hazard if improperly installed or attached in any way. Products should be installed in accordance with the owner's manual, current electrical codes, and/or the current National Electric Code (NEC).

You are now ready to use the String Lights via RF Remote See the "RF Remote Control" section for more details.

- To activate smart features proceed to steps 4 & 5.

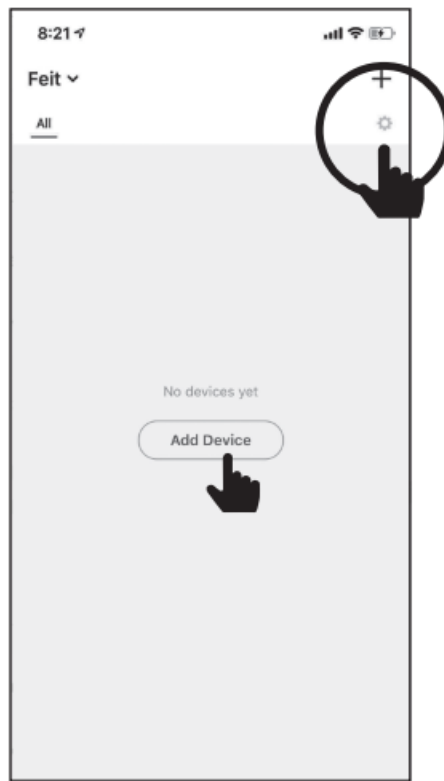
4. **Pair your device**

- Press and hold for 5 seconds when lights are On to enter pairing mode. Lights will blink.



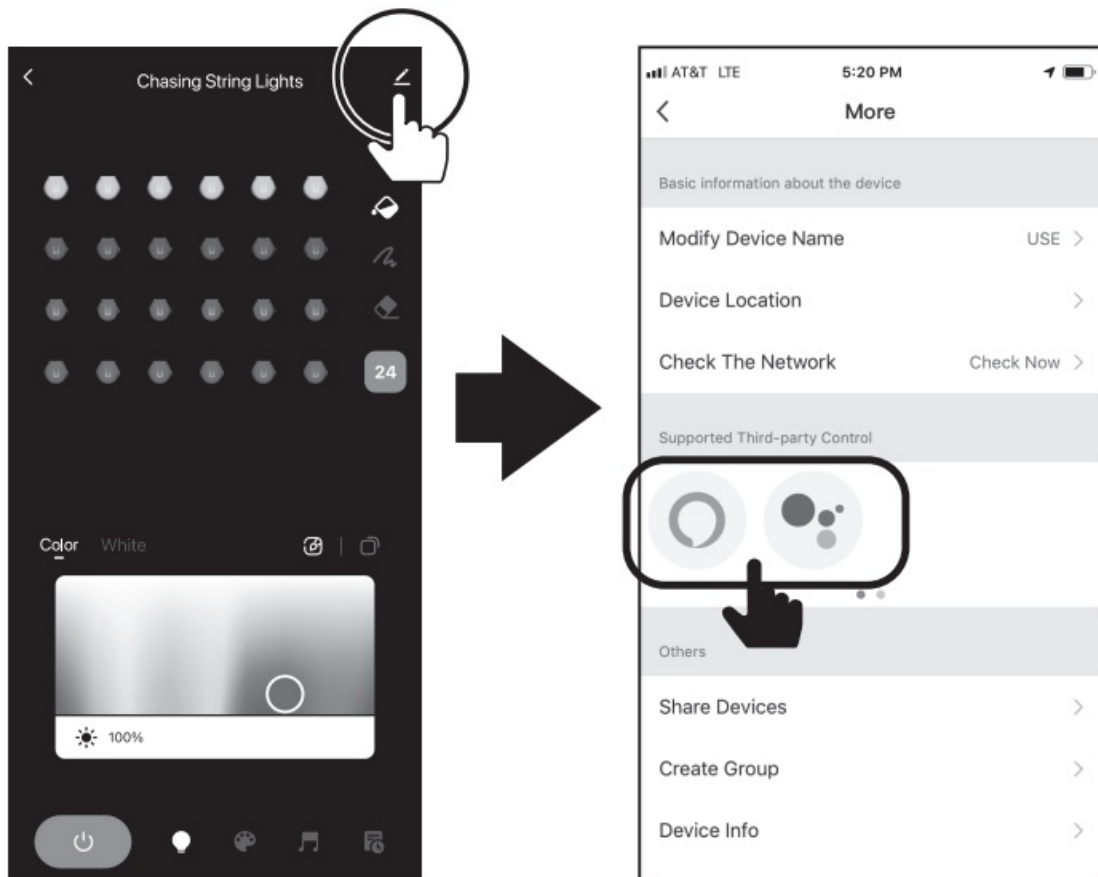
5. **Launch and use the Feit Electric app to complete the set up**

Tap Add Device or the + sign, then select String Lights and confirm. You will be prompted to enter your Wi-Fi network and password.



- Be sure to connect to a 2.4 GHz Wi-Fi network that covers your installation location.

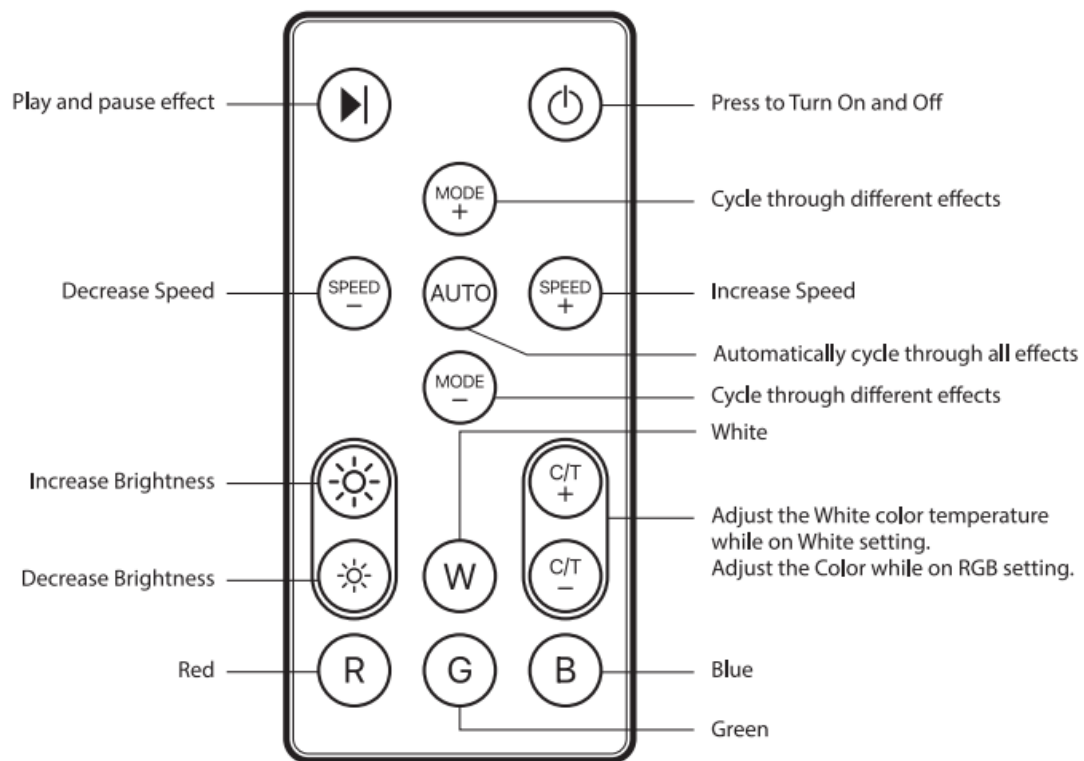
(Optional) Connect to Google Assistant or Alexa using the in App guide



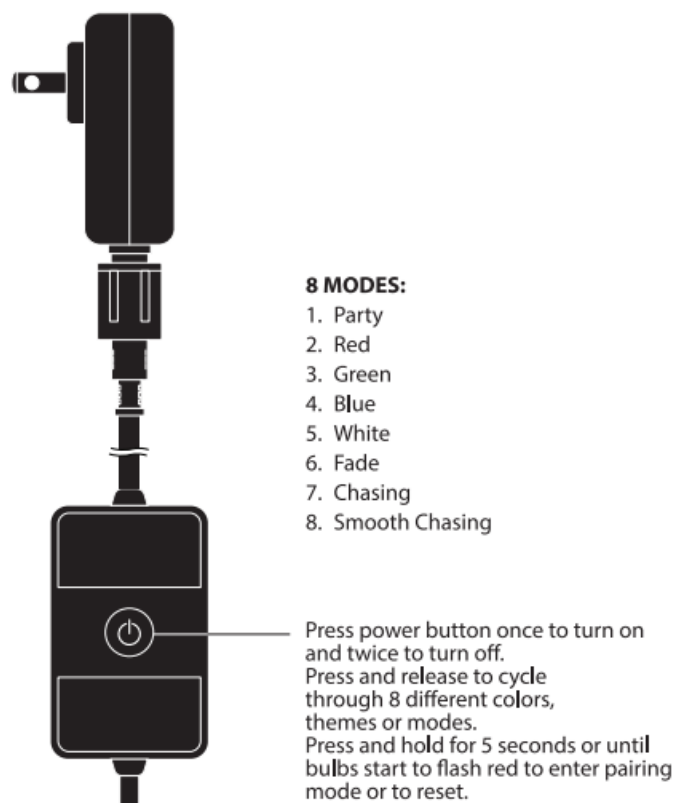
Tap **Pen** icon

Choose **Alexa** or **Google**

RF remote control



Power Supply Control Box



8 MODES:

1. Party
2. Red
3. Green

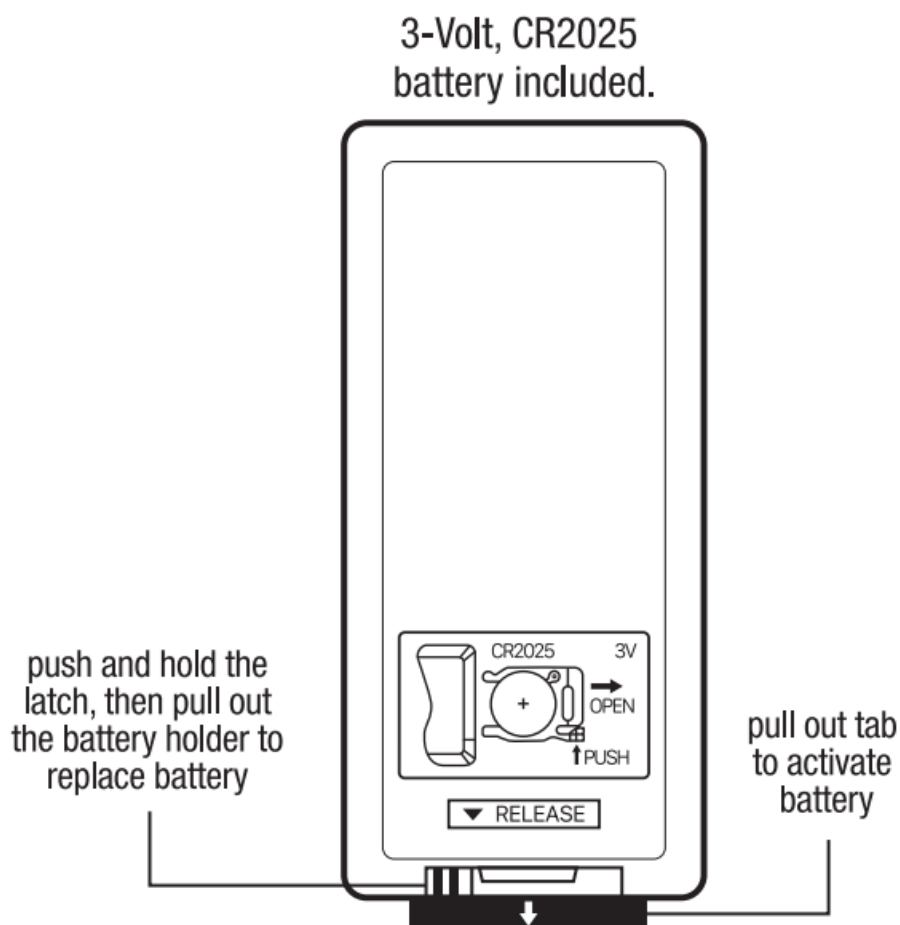
4. Blue
5. White
6. Fade
7. Chasing
8. Smooth Chasing

REPLACING BATTERY

Always purchase the correct size and grade of battery most suitable for the intended use. Clean the battery contacts and also those of the device prior to battery installation. Ensure the battery is installed correctly with regard to polarity (+ and -). Remove battery from equipment which is not to be used for an extended period of time. Remove used battery promptly.

This product contains a button battery. If swallowed, it could cause severe injury or death in just 2 hours. Seek medical attention immediately.

For additional remote controls please contact Feit Electric at 1-866-326-BULB (2852)-



TROUBLESHOOTING TIPS – WI-FI

If you are having difficulty connecting:

- Make sure the Wi-Fi network is a 2.4 GHz network. Smart String Lights will not connect to a 5 GHz network.
- Test your Wi-Fi network with other devices such as your phone to make sure it is operating properly.
- The Wi-Fi connection may not have good coverage during set up. Try moving the Smart String Lights closer to

your Wi-Fi router.

- Your Wi-Fi network password is case-sensitive, make sure you are entering correctly. Devices plugged into your Smart Wi-Fi Plug must be ON in order to be controlled via the mobile app.

Please also check the App User Guide for more information.

LIMITED WARRANTY

This product is warranted to be free from defects in workmanship and materials for up to 1 year from date of purchase. If the product fails within the warranty period, please visit feit.com/help for help. REPLACEMENT OR REFUND IS YOUR SOLE REMEDY. EXCEPT TO THE EXTENT PROHIBITED BY APPLICABLE LAW, ANY IMPLIED WARRANTIES ARE LIMITED IN DURATION TO THE DURATION OF THIS WARRANTY. LIABILITY FOR INCIDENTAL OR CONSEQUENTIAL DAMAGES IS HEREBY EXPRESSLY EXCLUDED. Some states and provinces do not allow the exclusion of incidental or consequential damages, so the above limitation or exclusion may not apply to you. This warranty gives you specific legal rights, and you may also have other rights which vary from state to state or province to province.



feit.com/help

Supplier's Declaration of Conformity: 47 CFR § 2.1077 Compliance Information

Responsible Party: Feit Electric Company, 4901 Gregg Road, Pico Rivera, CA 90660, USA [562-463-2852](tel:562-463-2852)

Unique Identifier: LVSL24-12/RGBW/AG

Radiation Exposure Statement

This device complies with FCC radiation exposure limits set forth for an uncontrolled environment.

This device should be installed and operated with a minimum distance of 20cm between the radiator and your body.

The performance specifications (life hours) printed on this manual should only be considered an approximation of expected performance.

FEIT ELECTRIC COMPANY | PICO RIVERA,

CA | [800-543-3348](tel:800-543-3348)

FAX [562-908-6360](tel:562-908-6360)

www.feit.com

Need Help?



Thank you for your purchase

Questions, comments or feedback?

We'd love to hear from you.



@FeitElectric



@FeitElectricInc

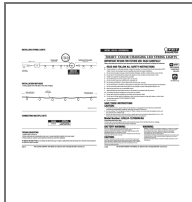


feitelectriclighting

- @FeitElectric
- @FeitElectricInc
- feitelectriclighting

Visit feit.com/help for support or connect with us:

Documents / Resources



[FEIT ELECTRIC LVSL24-12-RGBW Smart Color Changing LED String Lights](#) [pdf] Installati
on Guide
LVSL24-12-RGBW Smart Color Changing LED String Lights, LVSL24-12-RGBW, Smart Color C
hanging LED String Lights, Color Changing LED String Lights, Changing LED String Lights, LED
String Lights, String Lights, Lights

References

- [User Manual](#)

[Manuals](#), [Privacy Policy](#)

This website is an independent publication and is neither affiliated with nor endorsed by any of the trademark owners. The "Bluetooth®" word mark and logos are registered trademarks owned by Bluetooth SIG, Inc. The "Wi-Fi®" word mark and logos are registered trademarks owned by the Wi-Fi Alliance. Any use of these marks on this website does not imply any affiliation with or endorsement.