



FeinTech LT751 LED Monitor Lamp Instruction Manual

[Home](#) » [FeinTech](#) » FeinTech LT751 LED Monitor Lamp Instruction Manual 

Contents

1 FeinTech LT751 LED Monitor Lamp Instruction Manual

- 1.1 Safety Instructions
- 1.2 Intended use
- 1.3 Parts
- 1.4 How to use the screen clip
- 1.5 How to use the spacers
- 1.6 Description of controls and connection
- 1.7 Illuminance
- 1.8 Technical data
- 1.9 Disposal of the packaging and appliance
- 1.10 CE Declaration of Conformity

2 Documents / Resources

2.1 References

3 Related Posts

FeinTech LT751 LED Monitor Lamp Instruction Manual

LT750 / LT751 LED Monitor Lamp



Safety Instructions

Before using this product, please carefully read the following safety instructions to ensure its proper use. Keep this manual for future reference. The manual in multiple languages is available as download via feintech.eu.

- Use the lamp only on suitable square monitors with a frame thickness of 2 to 60 mm or curved monitors with a 21 to 35 mm frame. Make sure that the lamp fixture does not touch the sensitive screen surface.
- Ensure that the monitor is firmly fixed and that the lamp does not impair stability.
- Use the lamps indoors only and do not expose it to moisture, heat, open fire or harsh cleaning agents.
- Please do not attempt to open the housing. Only qualified personnel should perform any repairs.

- In case of malfunction, heat generation or unusual smell or behaviour, please disconnect the USB cable and contact your dealer or FeinTech.
- Route the USB cable so that it cannot be accidentally caught or tripped over
- Do not expose the lamp to water, moisture, or high-humidity environments to avoid the risk of damage.
- Do not place any objects on top of the lamp to avoid damage.

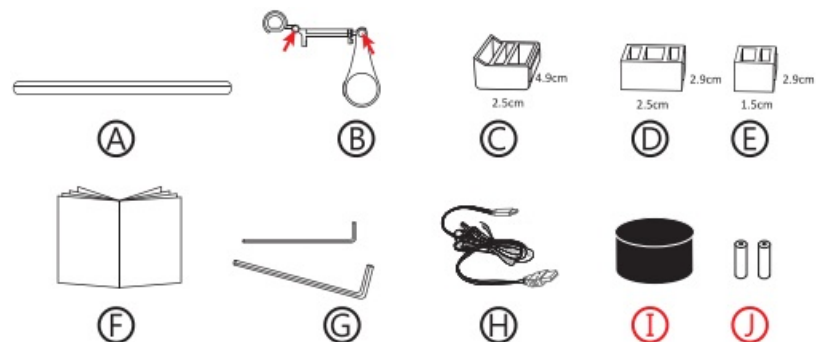
Intended use

The LT750 / LT751 lamp is used to illuminate a desk or the area in front of a monitor. The lamp is clamped to the monitor frame for mounting. The power (5V DC, 1 A) is supplied via a USB socket on the monitor, computer or an external power supply unit. A USB power supply unit is not supplied. The variant LT751 comes with an additional remote control.

Lamp Model:	LT750	LT751
Power supply	5V 1A (5W)	5V 1A (5W)
Dimmable	yes	yes
CCT change	yes	yes
Light sensor	yes	yes
Remote control	no	yes

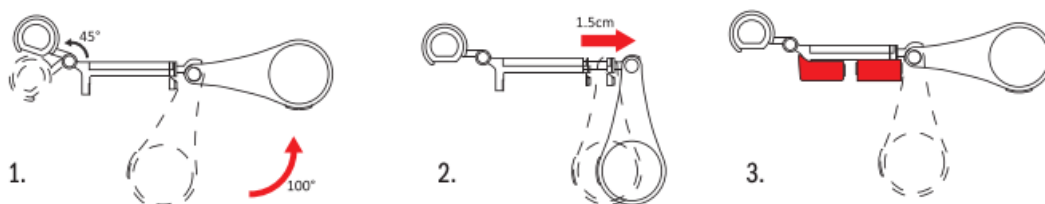
Parts

- A. Screen light
- B. Screen clip with 2 joints*
- C. Front adjusting spacer
- D. Rear adjusting spacer 1
- E. Rear adjusting spacer 2
- F. This manual
- G. 2 × Allen key to adjust joints*
- H. USB-C cable
- I. Remote control (only LT751)
- J. 2 × AA Batteries for remote control (only LT751)



* If necessary, you can tighten or loosen the screw on the joint. Carefully remove the cover first.

How to use the screen clip

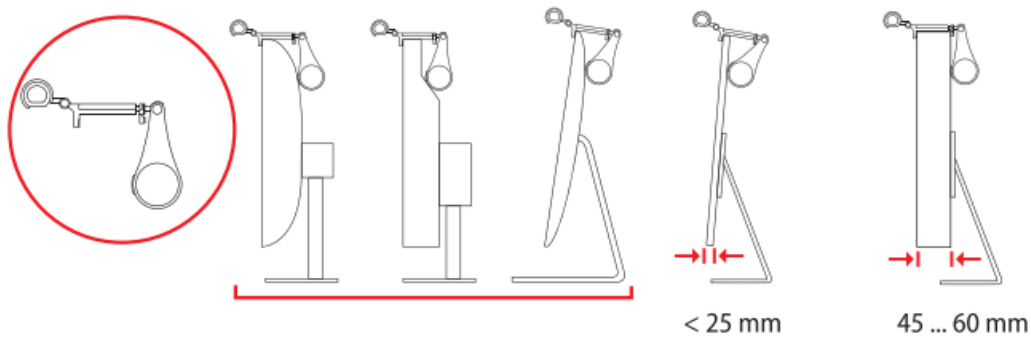


1. The screen clip has two joints (45° and 100°) for an optimal adjustment to your monitor.
2. The clip has a spring inside, so that it can be pulled out up to 15 mm.

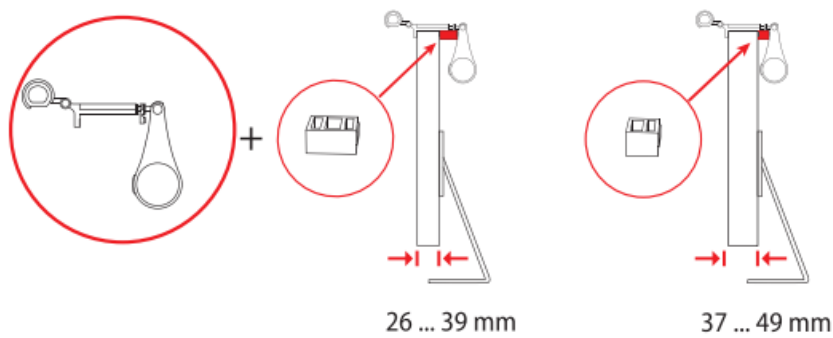
3. For monitors with a thin frame or a curved monitor, you can use the provided spacers as explained beneath.

How to use the spacers

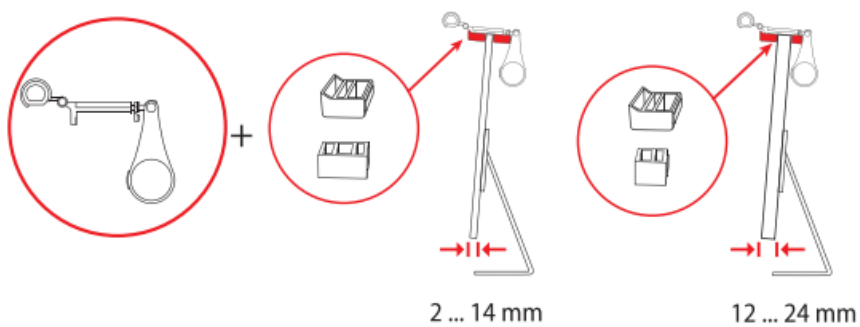
No need for a spacer if the monitor frame is uneven, thinner than 25 mm or between 45–60 mm



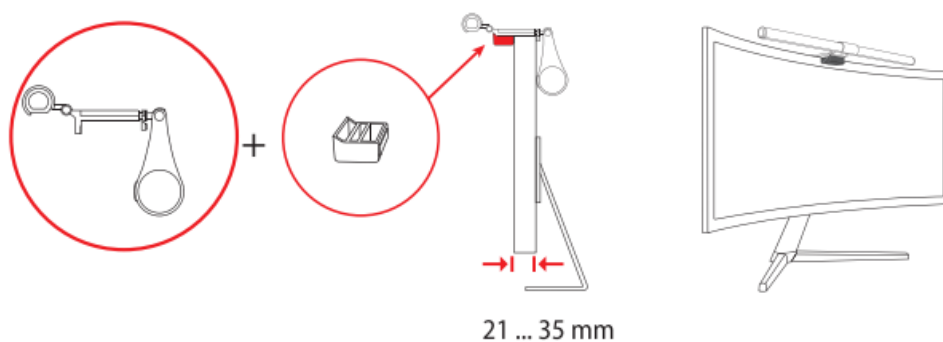
Add rear spacer (large or small)



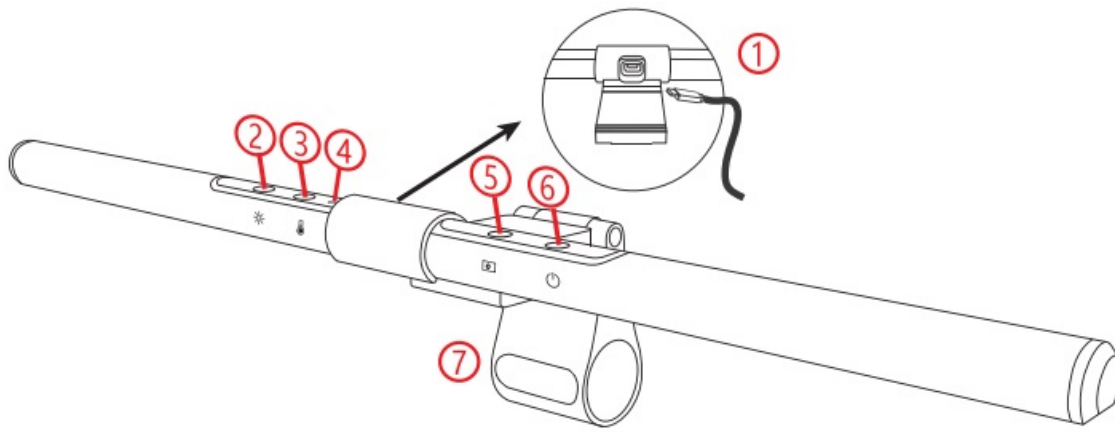
Add front & rear spacer, make sure that the rubber side faces the monitor frame



Use front spacer for curved monitor



Description of controls and connection



1. USB-C socket for the connection of the USB power supply. Connect the USB cable to the lamp and to an USB socket of your computer, monitor or USB hub.
2. Touch button for dimming: Tip shortly to change the brightness in steps, hold the button for stepless dimming
3. Touch button for CCT change: Tip shortly to change the light colour in steps (warm white to cold white), press and hold the button for stepless changing of the CCT.
4. Light sensor, detects the brightness of the environment.
5. Light sensor button. Touch button to activate automatic brightness control. Blue indicator is lit when function is active. The lamp adjusts the light intensity automatically according to the room light. If the gets dark, the brightness will be increased. To stop this function, touch button again or touch dimmer button.
6. On /Off switch: tip once to switch on/off the lamp
7. Screen clip

The latest settings are stored when the lamp is powered off. These settings are used again when the lamp has power next time.

The version LT751 is equipped with a wireless remote control puck. The puck is powered by 2 batteries. One press of the puck switches the lamp on. When switched on you can adjust the brightness by turning the top of the puck. Double press activates / deactivates the light sensor. Press top of the puck again to switch lamp off.

Illuminance

working height	daylight (6500K)	neutral light (4000K)	warm light (3000K)
20 cm	3070 lux	2400 lux	2230 lux
30 cm	1765 lux	1377 lux	1278 lux
40 cm	1295 lux	994 lux	927 lux
50 cm	795 lux	636 lux	587 lux

Technical data

- Life span L70B50 25,000 hours
- Correlated Colour Temperature (CCT) 3000°–6500° K

- Colour Rendering Index (CRI) > 95 Ra
- Light power Φ_{use} 479 lm
- Power consumption P_{on} 3.8 W
- Energy efficiency class E (A...G)
- Power requirements DC 5 V / 1 A
- Dimensions 51 × 11 × 13 cm

Disposal of the packaging and appliance



The packaging and the appliance consist of recyclable materials. Please return the packaging and the device at the end of its service life to your local recycling system. Please contact your dealer or a municipal waste disposal facility / recycling centre for information on current disposal methods. By reusing, recycling or otherwise recovering old appliances, you are making an important contribution to protecting our environment.

CE Declaration of Conformity



This product complies with EU directives. We, Spreewald Kommunikationstechnik GmbH, hereby declare that this device complies with the EMC Directive 2014/30/EU and the RoHS Directive 2011/65/EU. The formal declaration of conformity is available at <https://feintech.eu/ce> or on request.

FeinTech is a registered trademark of Spreewald Kommunikationstechnik GmbH, Radensdorfer Hauptstr. 45 a, 15907 Lübben (Spreewald), Germany • Contact: info@feintech.eu • +49 3546 2398855 • www.feintech.eu

Documents / Resources

	<p>FeinTech LT751 LED Monitor Lamp [pdf] Instruction Manual LT750, LT751, LT751 LED Monitor Lamp, LT751, LED Monitor Lamp, Monitor Lamp, Lamp</p>
--	---

References

- [Ft FeinTech | Dein Spezialist für Audio, Video & HDMI | Offizieller Shop](#)
- [Ft FeinTech | Dein Spezialist für Audio, Video & HDMI | Offizieller Shop](#)
- [Ft CE Konformitätserklärungen - FeinTech](#)
- [User Manual](#)

Manuals+, Privacy Policy

This website is an independent publication and is neither affiliated with nor endorsed by any of the trademark owners. The "Bluetooth®" word mark and logos are registered trademarks owned by Bluetooth SIG, Inc. The "Wi-Fi®" word mark and logos are registered trademarks owned by the Wi-Fi Alliance. Any use of these marks on this website does not imply any affiliation with or endorsement.