

Contents [[hide](#)]

[1 FeinTech FPS00201 USB Fingerprint Sensor](#)

[2 Safety instructions](#)

[3 Preparation](#)

[4 Installation](#)

[5 Setup](#)

[6 Troubleshooting](#)

[7 Contact](#)

[8 FAQ](#)

[9 Documents / Resources](#)

[9.1 References](#)



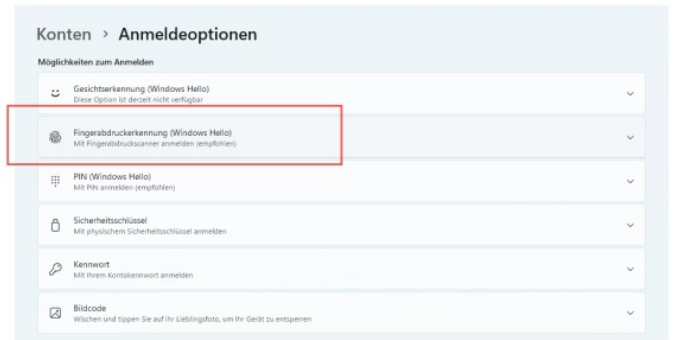
FeinTech FPS00201 USB Fingerprint Sensor



Safety instructions

- Do not touch the fingerprint sensor with hard objects.
- Make sure your fingers are clean before adding the fingerprint. If your finger is wet, dry it and then add your fingerprint. If your finger is too dry, wet it, wipe it dry and then add your fingerprint.
- Keep the reading surface of the device clean. If necessary, use a soft cloth to gently clean it.
- Use the finger with a clear and complete fingerprint. Apply appropriate pressure for about 1 second when taking the fingerprint to achieve the best result. Applying too much pressure will distort the fingerprint and affect the result.
- Keep the device away from water, liquids and heat.
- Use the device directly on a USB port on your computer without any other adapters. Otherwise the correct function cannot be guaranteed.

The manual is for reference only. In the event of discrepancies between the manual and the Windows operating system, the Windows version shall prevail. All designs and software are subject to change without prior written notice. Due to product updates, there may be discrepancies between the actual product and the manual. Please contact customer service to obtain the latest programme and documentation. Because the drivers and application software are provided by third parties, we have no control over these functions and any changes that may occur. There may always be deviations in the technical data, functions and operating descriptions or printing errors. In the event of ambiguities or disputes, we reserve the right to make a final declaration. All trademarks, registered trademarks and company names in this manual are the property of their respective owners. Please visit our website, contact the supplier or FeinTech customer service if a problem occurs when using the device. Please note that this fingerprint sensor was developed for Windows 10 and 11. It works with Windows Hello. Support for other operating systems is not provided.

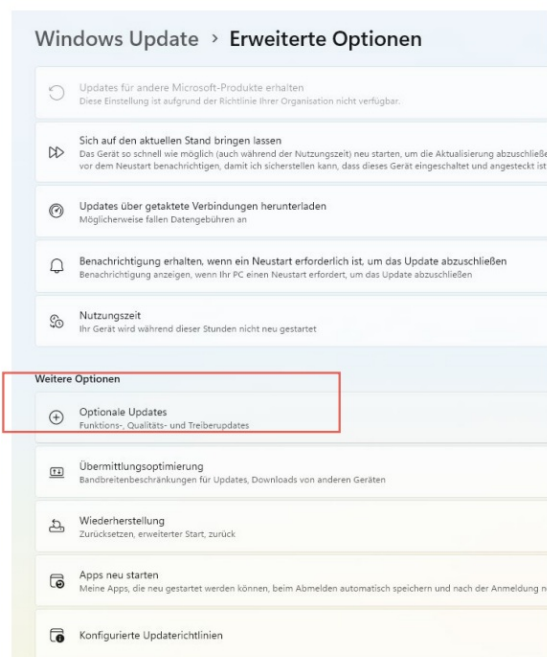


Preparation

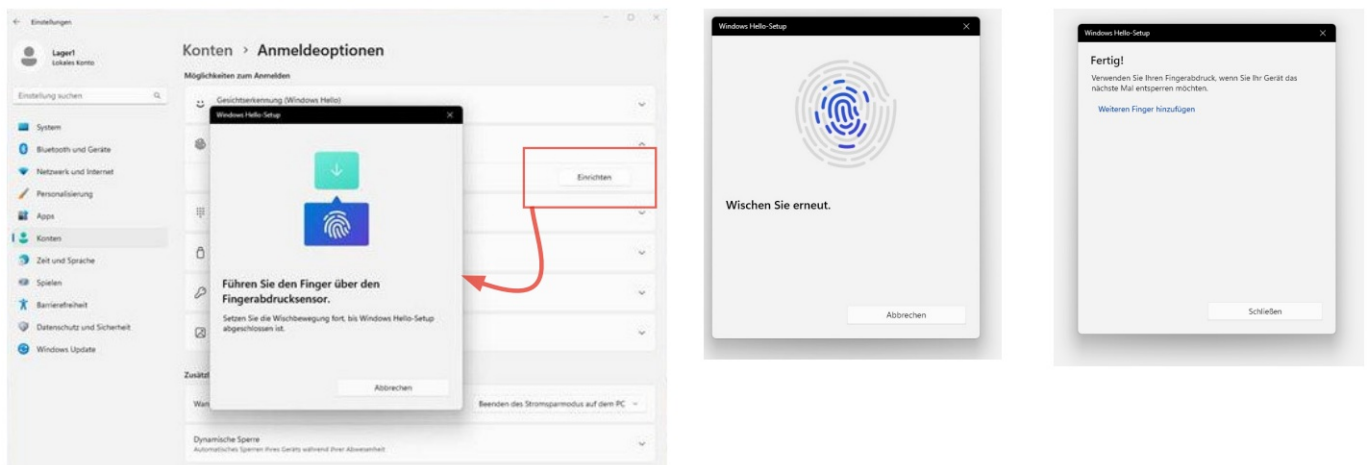
Start your Windows computer and make sure you have an internet connection. You need administrator rights. If your computer is part of a corporate network/domain, the use of Windows Hello and the installation of USB devices/drivers must be allowed. Please note that the menus on your computer may look different or change over time. The setup described here refers to Windows 11. An installation under Windows 10 is just as possible.

Installation

Plug the FPS00201 into a free, easily accessible USB socket. Normally, the appropriate driver is now automatically installed and the installation is complete. Under Accounts > Logon Options, the option Fingerprint Recognition (Windows Hello) is now available. You can then continue with the setup.



If this option is not yet available, please check these settings: Under Windows Update > Advanced Options, select Optional Updates and allow driver updates. The appropriate driver for biometric devices should be installed now at the latest. Under Windows Update > Update History > Driver Updates you can see drivers that have already been installed.



Setup

If not already done, set up PIN (Windows Hello) as an additional logon option. This allows you to log in when the fingerprint sensor is not connected. Under Accounts > Logon Options, select Fingerprint Recognition (Windows Hello) and click Setup. Then follow the instructions. You can enrol several fingers one after the other. To do this, click Add more fingers. Done. You can now use your fingerprint to log in to Windows, Microsoft services and other applications that support Windows Hello.

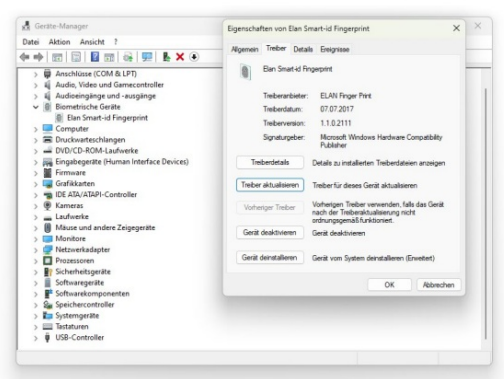
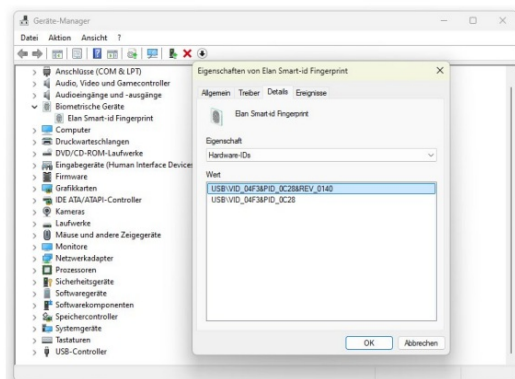
Troubleshooting

Insert the fingerprint sensor into the PC. There should be some reaction. Press the Windows key+ X and select the Device Manager. The fingerprint sensor can be found under „Biometric devices“. There are then different scenarios:

The device cannot be started or it does not appear in the Device Manager. It is possible that an unsuitable USB port of the computer is being used, e.g. USB 1.1 (instead of USB 2.0 or USB 3.0). The driver is then usually installed correctly, but the device cannot be started.

- Try a different USB 2.0/3.0 port
- Do not use a USB hub to connect the fingerprint sensor, but a port on the mainboard instead

- Check in the computer's bios whether a „Legacy“ mode or 1.1 mode for USB is switched on



There is a message that the driver cannot be installed or is faulty

The appropriate driver is usually installed automatically via Windows Update. Sometimes it can also be found under Windows Update > Advanced options > Optional updates. Manual driver installation is very rarely necessary. Then proceed as follows: Please check whether the following hardware ID is displayed in the device manager. (Right-click on the entry under „Biometric devices“ and select Properties to get the above view. The manual driver download from Microsoft is possible here:

https://www.catalog.update.microsoft.com/Search.aspx?q=VID_04F3%26PID_0C28 The CAB archive can be installed by right-clicking on „Update driver“ and selecting the directory in which the driver CAB file was downloaded.



Restricted rights

As usual, installation is only possible if there is an online connection and you have admin rights. If the computer is part of a school or company network, or if a group policy has been created by an administrator, the use of Windows Hello may not yet be permitted. In this case, ask the system administrator to activate it. Please also make sure that Windows Hello is switched on: Under „Accounts > Sign-in options > Additional settings“ there may be a slide switch to switch it off, as shown above.

Disposal of the packaging

The packaging of the unit consists of recyclable materials. Please return it to your local

recycling system. Please contact your dealer or a municipal waste disposal facility / recycling centre for information on current disposal methods.

Disposal of the appliance

Old appliances are not worthless waste. Valuable raw materials can be recovered through environmentally friendly disposal. At the end of its service life, this product must not be disposed of with normal household waste, but must be taken to a collection point for the recycling of electrical and electronic equipment.



■ The symbol on the product, the instructions for use or the packaging indicates this. The materials are recyclable according to their labelling. By reusing, recycling or otherwise recovering old appliances, you are making an important contribution to protecting our environment.

CE Declaration of Conformity

CE This product complies with EU directives and may only be used in conjunction with shielded cables. We, Spreewald Kommunikationstechnik GmbH, hereby declare that this device complies with the EMC Directive 2014/30/EU and the RoHS Directive 2011/65/EU. The formal declaration of conformity is available at <https://feintech.eu/ce> or on request.

Contact

- FeinTech is a registered trademark of
- Spreewald Kommunikationstechnik GmbH
- Radensdorfer Hauptstr. 45 a
- 15907 Lübben (Spreewald) • Germany
- WEEE-Reg DE15618234


Service:

- service@feintech.eu
- +49 3546 239 8855
- <https://feintech.eu>

FAQ

- **Q: Can I use this fingerprint sensor with operating systems other than Windows 10 and 11?**
 - A: No, this fingerprint sensor was specifically developed for Windows 10 and 11 and works with Windows Hello. Support for other operating systems is not provided.
- **Q: What should I do if I encounter issues while using the device?**
 - A: Please visit the FeinTech website, contact the supplier, or reach out to FeinTech customer service for assistance in case of problems during device usage.

Documents / Resources

	FeinTech FPS00201 USB Fingerprint Sensor [pdf] Instruction Manual FPS00201 USB Fingerprint Sensor, FPS00201, USB Fingerprint Sensor, Fingerprint Sensor, Sensor
---	--

References

- [User Manual](#)

FeinTech

FeinTech, Fingerprint Sensor, FPS00201, FPS00201 USB Fingerprint Sensor, Sensor, USB Fingerprint Sensor

Leave a comment

Your email address will not be published. Required fields are marked *

Comment *

Name

Email

Website

☐ Save my name, email, and website in this browser for the next time I comment.

Post Comment

Search:

e.g. whirlpool wrf535swhz

Search

[Manuals+](#) | [Upload](#) | [Deep Search](#) | [Privacy Policy](#) | [@manuals.plus](#) | [YouTube](#)

This website is an independent publication and is neither affiliated with nor endorsed by any of the trademark owners. The "Bluetooth®" word mark and logos are registered trademarks owned by Bluetooth SIG, Inc. The "Wi-Fi®" word mark and logos are registered trademarks owned by the Wi-Fi Alliance. Any use of these marks on this website does not imply any affiliation with or endorsement.