

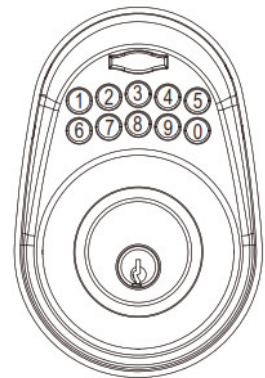
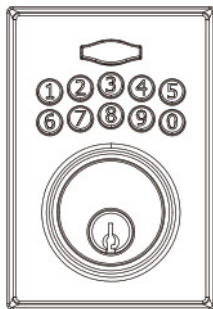


Feikeer G00-KPDA619A-XP Electronic Keypad Keyed Deadbolt Instruction Manual

[Home](#) » [Feikeer](#) » Feikeer G00-KPDA619A-XP Electronic Keypad Keyed Deadbolt Instruction Manual 

Feikeer

G00-KPDA619A-XP Electronic Keypad Keyed Deadbolt
Instruction Manual
FOR



Contents

- [1 Safety Information](#)
- [2 Pre-installation – Tools Required / Hardware Included](#)
- [3 Door Preparation](#)
- [4 Installation](#)
- [5 Documents / Resources](#)
- [6 Related Posts](#)

Safety Information

Read the precautions and instructions in this manual before installing and using this lock. Save this manual for future reference.

CAUTION

Please use four alkaline batteries for the best performance.

- A. Do not attempt to disassemble any internal components of the lockset. Doing so will void the limited warranty.
- B. Do not drop or hit the lockset. Too much shock may result in permanent damage.
- C. Do not use pins or sharp objects to press the keypad.
- D. Always create a backup of information you wish to keep (programming code, user codes, etc.) Please use the last page of this booklet as a reference.
- E. Promptly change the programming code before operating this lockset.

CARE and MAINTENANCE

The following instructions should be followed to properly protect and maintain your lockset:

- A. Remove locks, or do not install locks, prior to painting your door.
- B. Periodically clean with mild soap and a soft cloth only.
- C. Do not use any abrasives or chemical products containing alcohol, benzene, acids, and avoid using sharp or abrasive objects to clean this lockset.
- D. Do not allow any water or liquids into the lockset during installation.

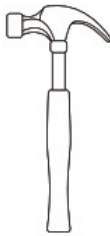
Pre-installation – Tools Required / Hardware Included



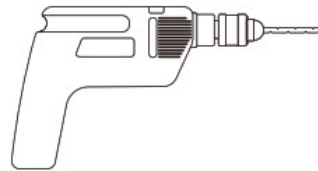
Optional



Optional



Optional



Optional

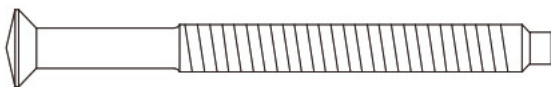


Optional

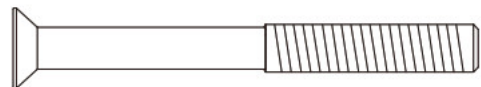
WARNING

If the door needs to be drilled, please be familiar with how to use a drill safely and understand all of the door preparation steps before proceeding.

Part	Description	Quantity
AA	2-5/16" (58mm) Mounting Bolt	2
	1-13/16" (46mm) Mounting Bolt	
BB	13/16" (20mm) Screw	2
CC	3/4" (19 mm) Wood Screw	4



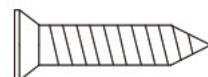
OR
O



AA

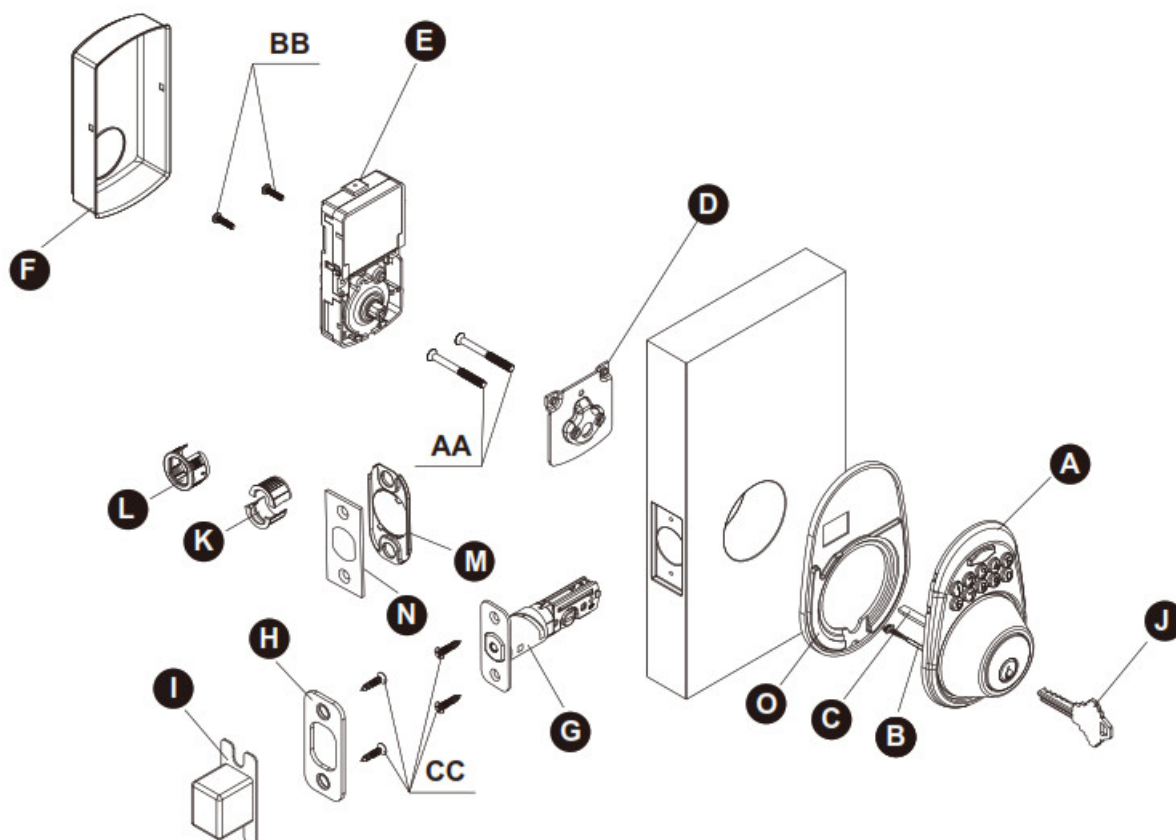


BB



CC

Part	Description	Quantity
A	Exterior Assembly	1
B	Power Cable	1
C	Torque Blade	1
D	Mounting Plate	1
E	Interior Assembly	1
F	Battery Cover	1
G	Latch	1
H	Strike Plate	1
I	Dust Box	1
J	Key	2
K	Drive-in Collar (Optional)	1
L	Drive-in Collar (Optional)	1
M	Bottom Plate (Optional)	1
N	Square or Radius Faceplate (Optional)	1
O	Exterior Gasket	1



Door Preparation

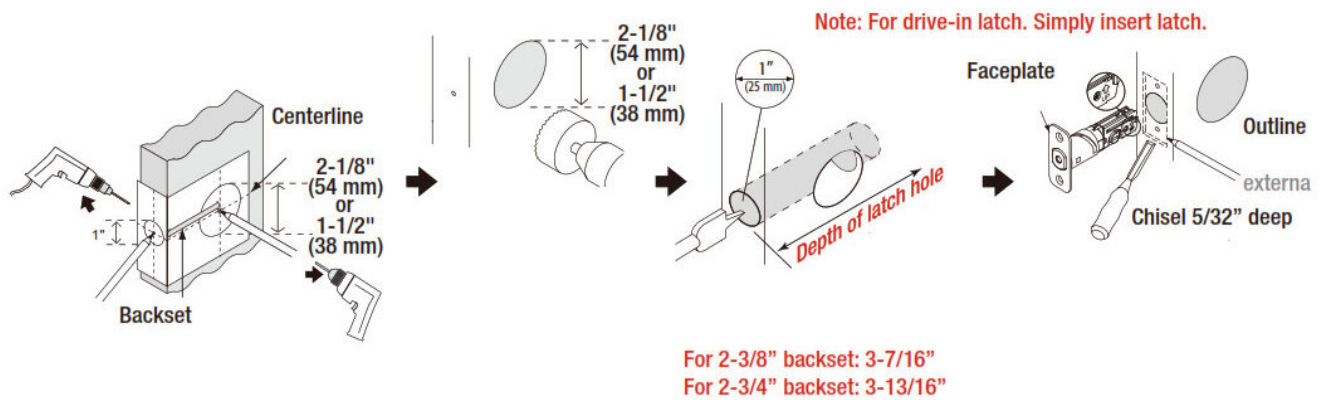


NOTE: If your door is pre-drilled, check the hole sizes to make sure they are the proper size. If they are the proper size, skip to the Installation section.

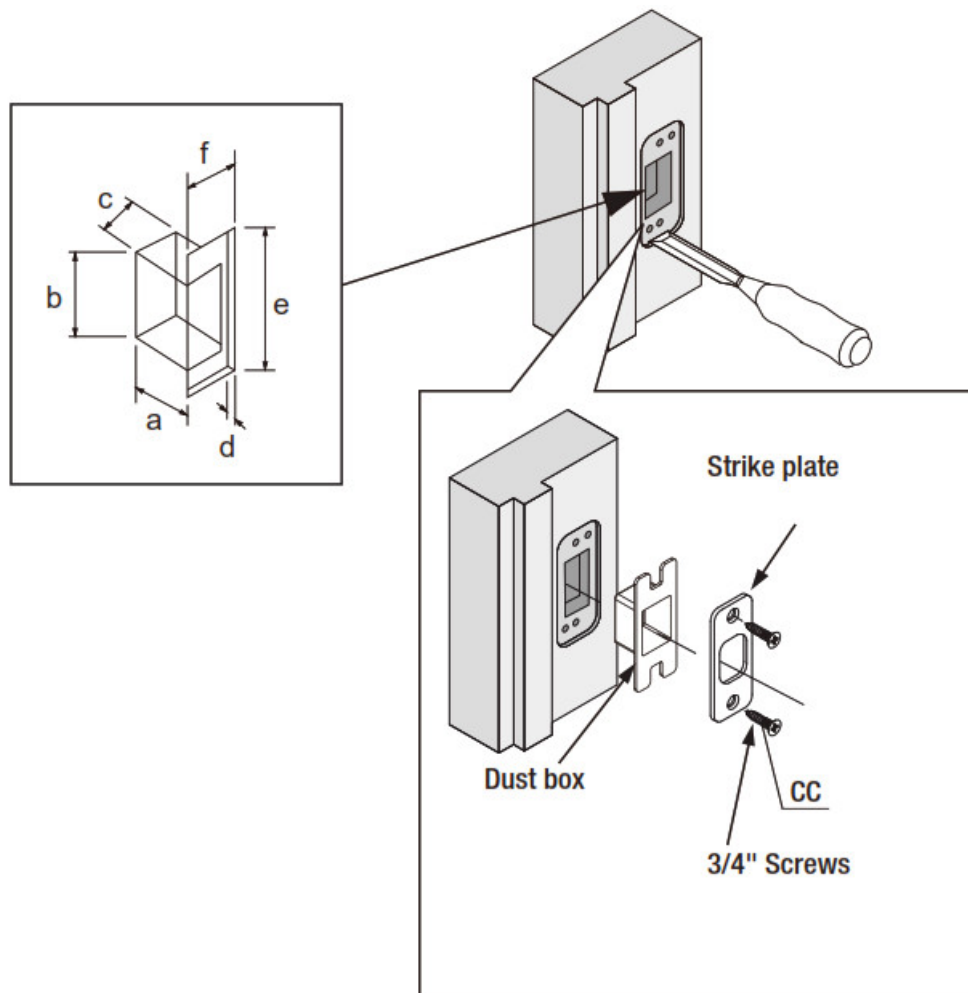
1. Cut out TEMPLATE (reverse page) and use to mark the door, drill holes, and chisel out the mortise.



NOTE: Drill from both sides of the door to prevent wood splitting.



2. Prepare the door jamb – use the strike plate as a template to drill the latch and screw holes and chisel out the mortise. The strike plate must fit flush with the surface of the door jamb.



Door jamb hole dimension

- a. 1-3/16" (30 mm)
- b. 1-9/64" (29 mm)
- c. 7/8" (22 mm)

Strike dimensions

- d. 5/32" (4 mm)

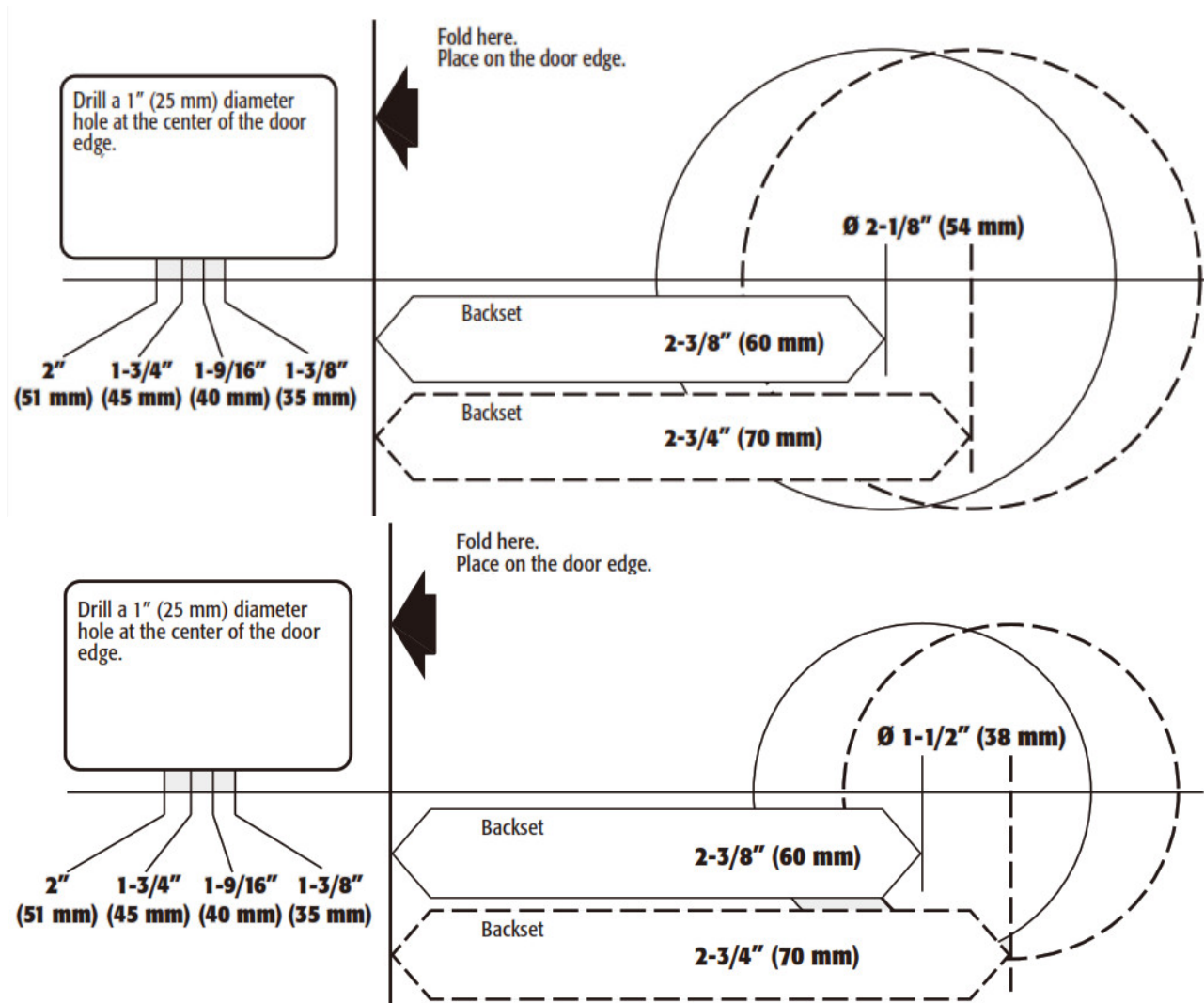
e. 2-1/4" (57 mm)

f. 1" (25 mm)

TEMPLATE



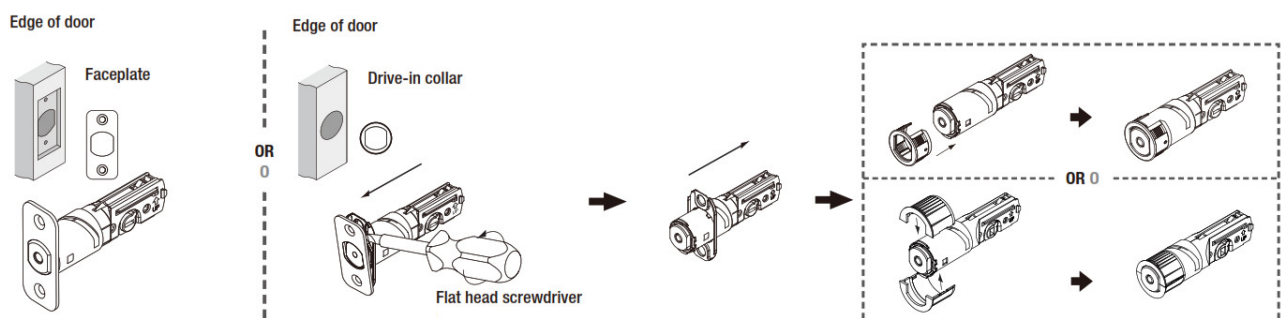
NOTE: Double check your product for the correct hole sizes.



Installation

1. INSTALLING THE LATCH

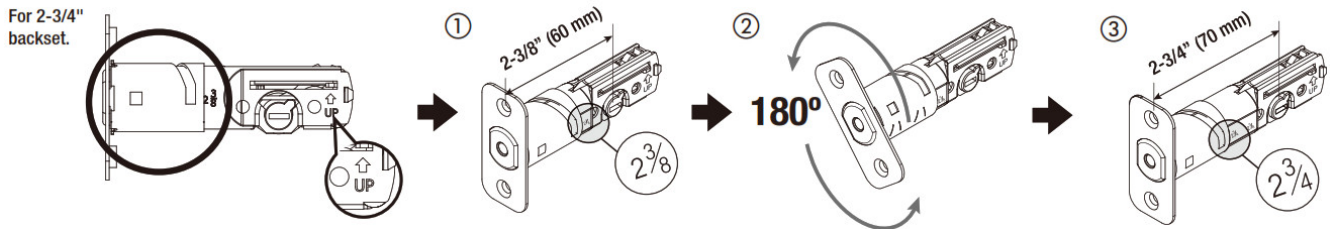
A. Attach the correct faceplate



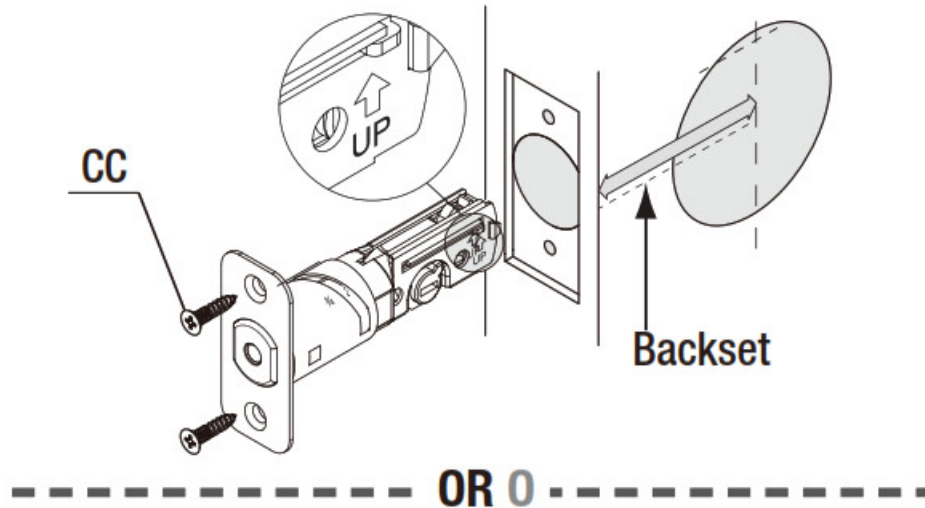
B. Set the latch backset length



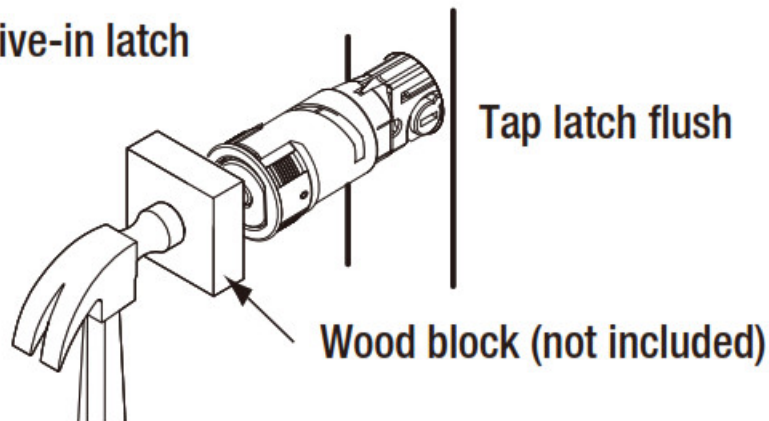
CAUTION: Be sure the latch cam is upright before making any backset adjustment.



C. Install the latch

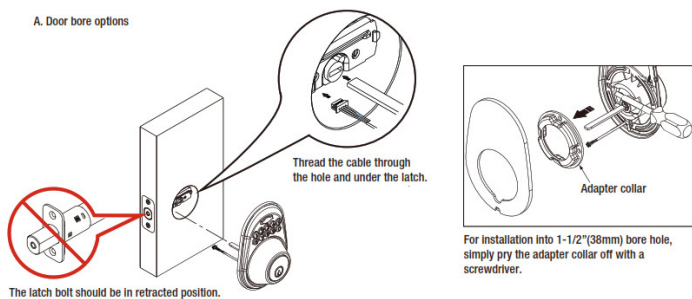


Drive-in latch

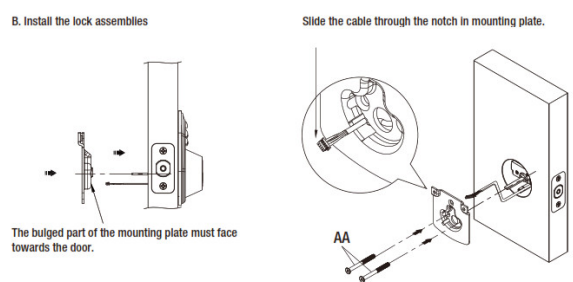


2. INSTALLING THE LOCK ASSEMBLIES

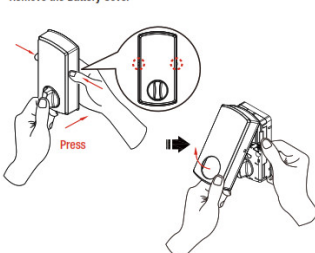
A. Door bore options



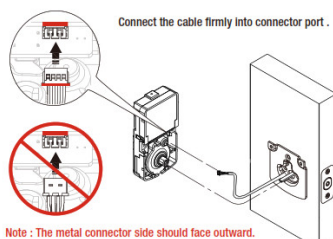
B. Install the lock assemblies



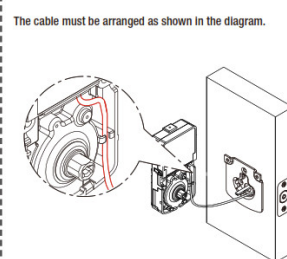
Remove the Battery Cover



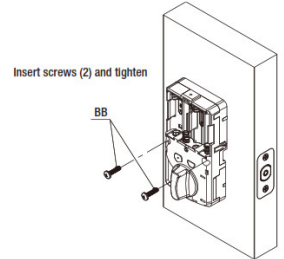
Connect the cable firmly into connector port.



The cable must be arranged as shown in the diagram.

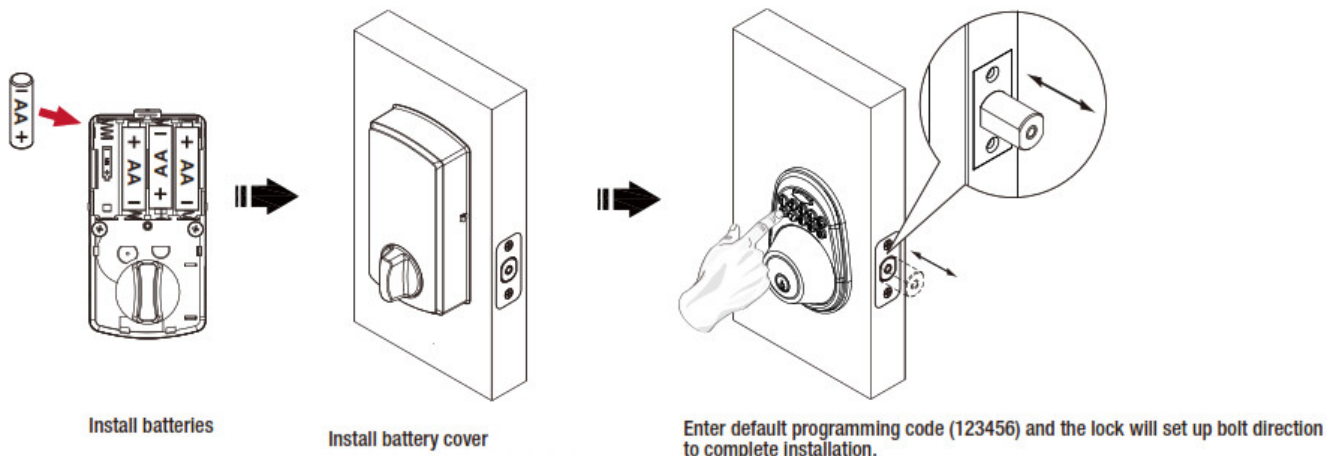


Insert screws (2) and tighten



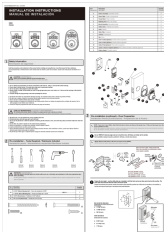
CAUTION

1. Please use four alkaline batteries for better performance.
2. Please set up the lock and perform bolt direction determination to complete the installation.



Feikeer

Documents / Resources

	<p>Feikeer G00-KPDA619A-XP Electronic Keypad Keyed Deadbolt [pdf] Instruction Manual G00-KPDA619A-XP Electronic Keypad Keyed Deadbolt, G00-KPDA619A-XP, Electronic Keypad Keyed Deadbolt, Keypad Keyed Deadbolt, Keyed Deadbolt, Deadbolt</p>
--	---