

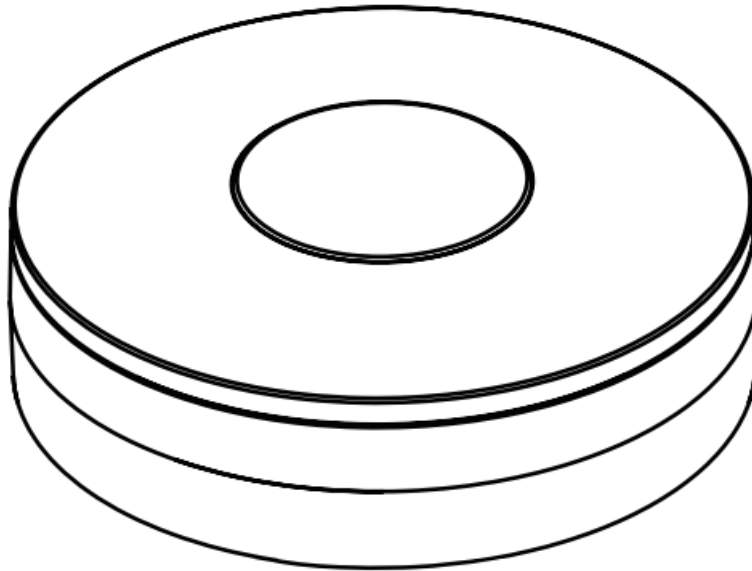


feelspot FS-IRF02W IR Remote Controller Pro Instructions

[Home](#) » [FEELSPOT](#) » feelspot FS-IRF02W IR Remote Controller Pro Instructions 

feelspo^ot

FS-IRF02W
IR Remote Controller Pro
IR+RF

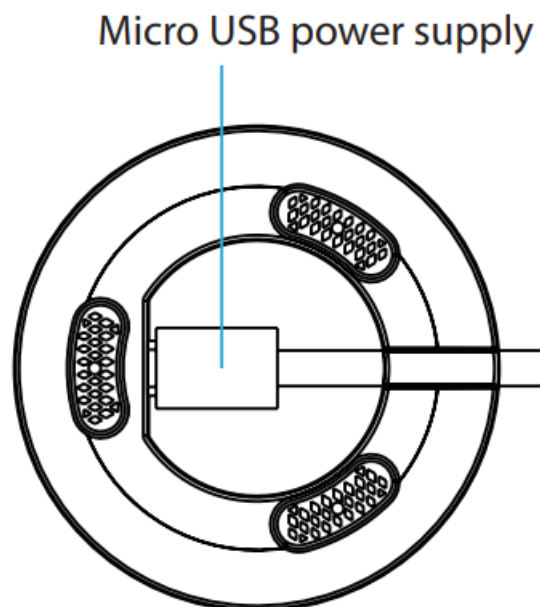
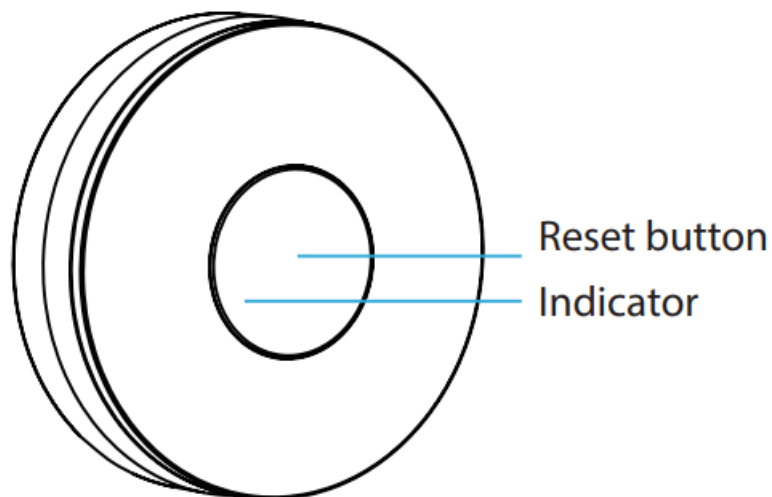


INSTRUCTION

Contents

- [1 Product Configuration](#)
- [2 Specifications](#)
- [3 LED State](#)
- [4 Get Started](#)
- [5 Functions and Settings](#)
- [6 Documents / Resources](#)
- [7 Related Posts](#)

Product Configuration



Specifications

Power supply: DC 5V/1A

Power interface: Micro USB

Wi-Fi type: 2.4GHz

Wi-Fi standard: IEEE 802.11b/g/n

Wireless range: 45m

Working current: 800mA
Standby current: 40mA
Infrared remote distance: 10M
RF frequency: 315 433MHz
Bluetooth version: bluetooth 5.0
Working Temperature: -10°C 60°C 14 °F 140 °F
Working Humidity: 0 90%RH Non condensation
Product size: 61mm X 61mm X 21mm

LED State

Device Status	LED State
Smart Wi-Fi mode	Blink 2 times per second
AP compatibility mode	Blink 1 time in 2 seconds
Remote control	Each remote control device, the indicator light will flash once
Internet connected	The indicator light is often on
Network Exception (or network not connected)	Indicator lights out
Remark	1. The equipment indicator light is in red 2. The Bluetooth distribution network can be used in any add way

Get Started

1. Download APP

Download the “Smart life” app from APP Store or Google Play to your mobile.



<http://smartapp.tuya.com/smartlife>

2. Register and Login

2-1 Launch the “Smart life” app.

2-2 To register, enter your mobile phone number or email address, create a password, then login to the app.

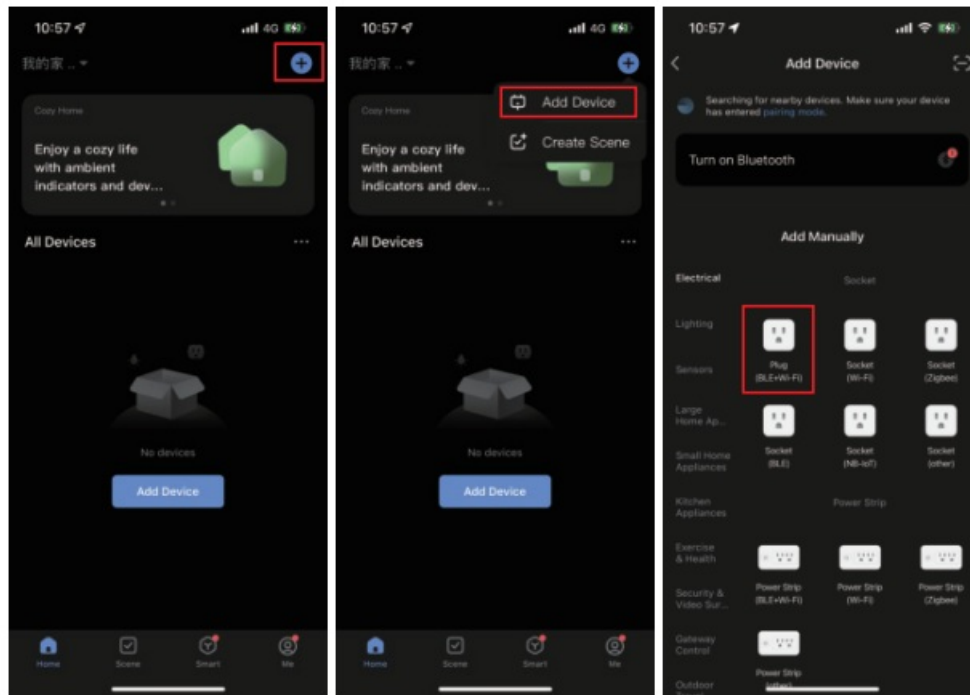
2-3 Login if you have an account already.

3. Add Device

3-1 Wi-Fi Mode(Default)

- If you have not turned on the Bluetooth function of your phone, please add devices manually.
- Select the “+” symbol on the top right-hand corner.

- Click “Add Device”– Add Manually“Plug(BLE+Wi-Fi)” enter Wi-Fi **Mode**.

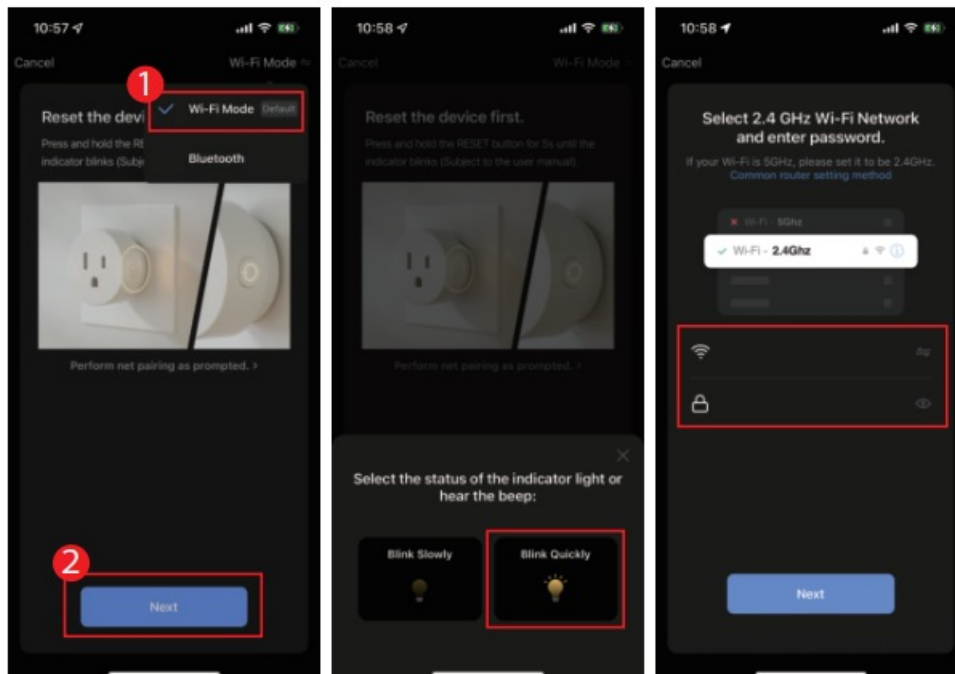


Note:

- If the indicator light is off, please press and hold the reset button for 6 seconds, then add the device according to the status of the indicator light.
- All Wi-Fi products can be added with any Wi-Fi option, and the device only supports 2.4GHz Wi-Fi signals.

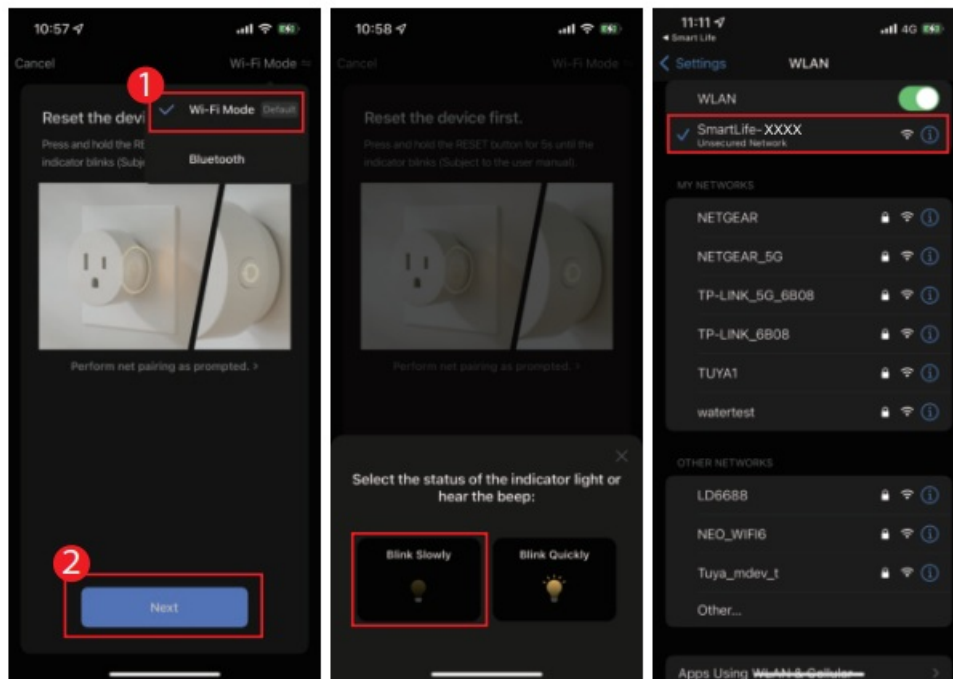
3-1-1 Smart Wi-Fi Mode

Press the reset button until the indicator light blink quickly, then follow the APP prompts to add.



3-1-2 AP compatible Mode

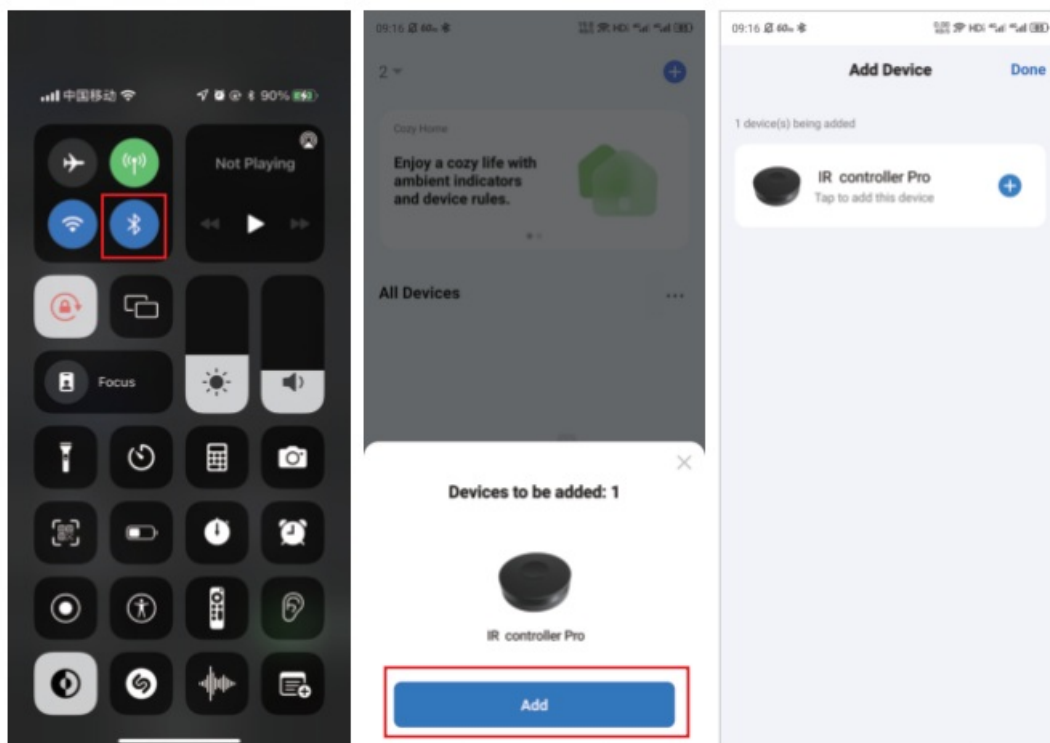
Press the reset button until the indicator light blink slowly, then follow the APP prompts to add.



3-2 Bluetooth Mode

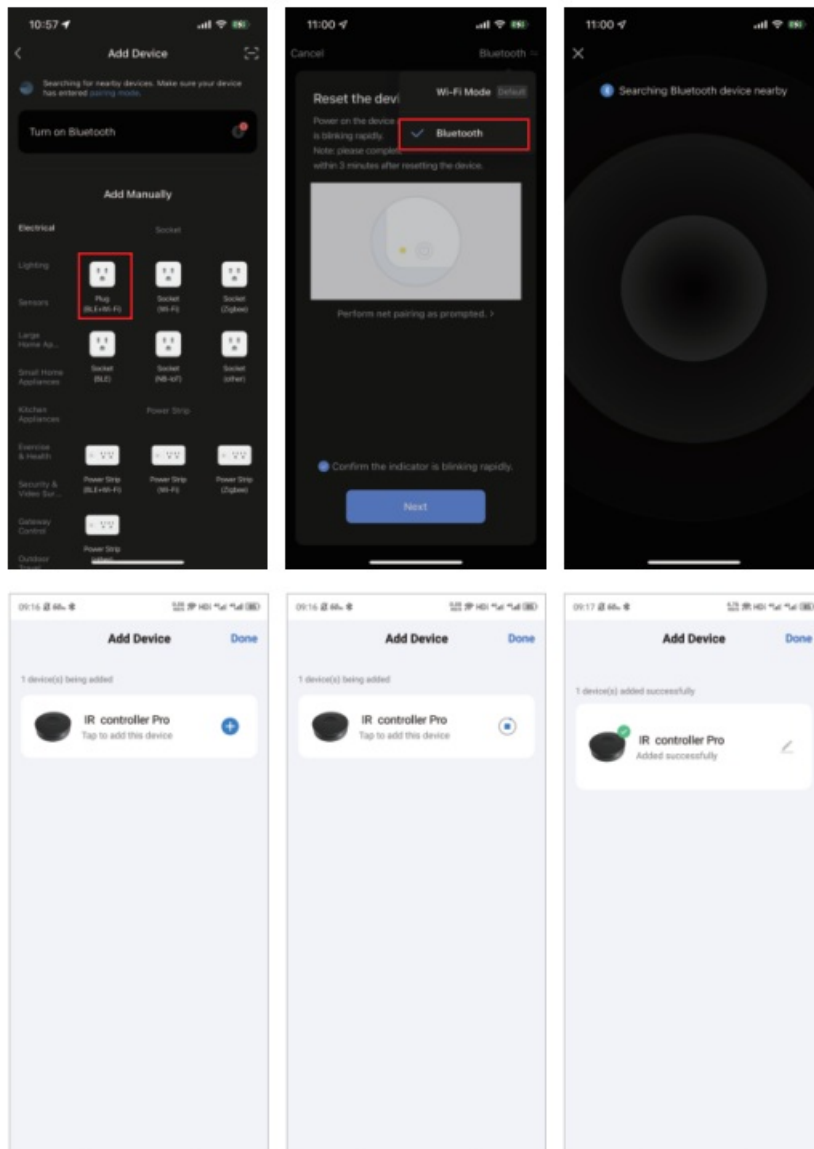
3-2-1 Bluetooth Pairing(Add Automatically)

- First open the bluetooth function of your phone.
- Then enter the app, the “Devices to be added ” window will pop up automatically.

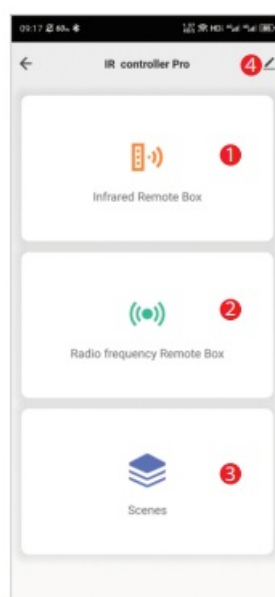


3-2-2 Bluetooth network (Add Manually)

- If it does not automatically pop up, you can add the device by following the steps below.



Functions and Settings



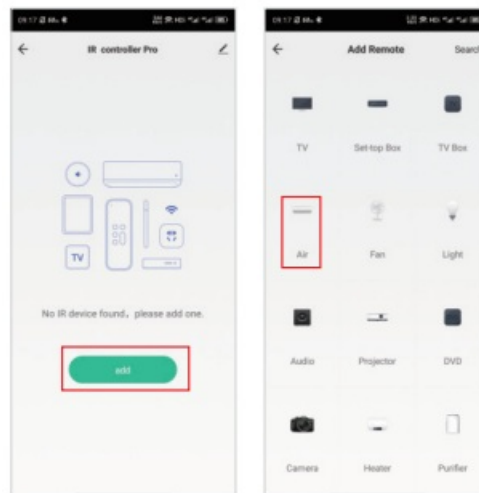
4. Working Status and Settings

4-1 Infrared Remote

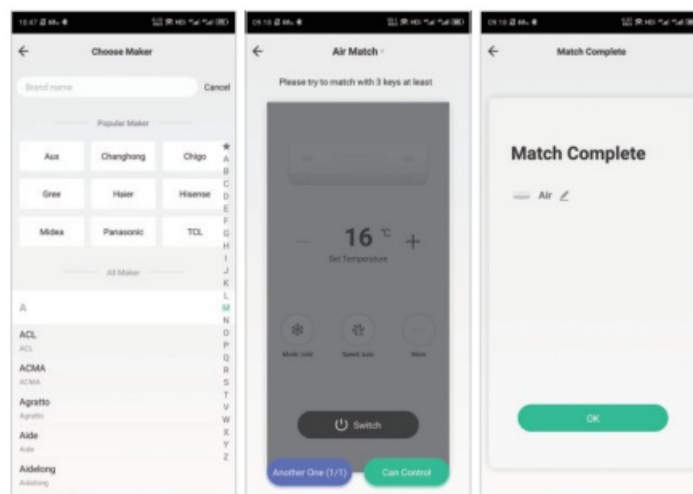
Support adding IR device

4-1-1 General

(1) Select the infrared remote device, click Add, and select the device to control.

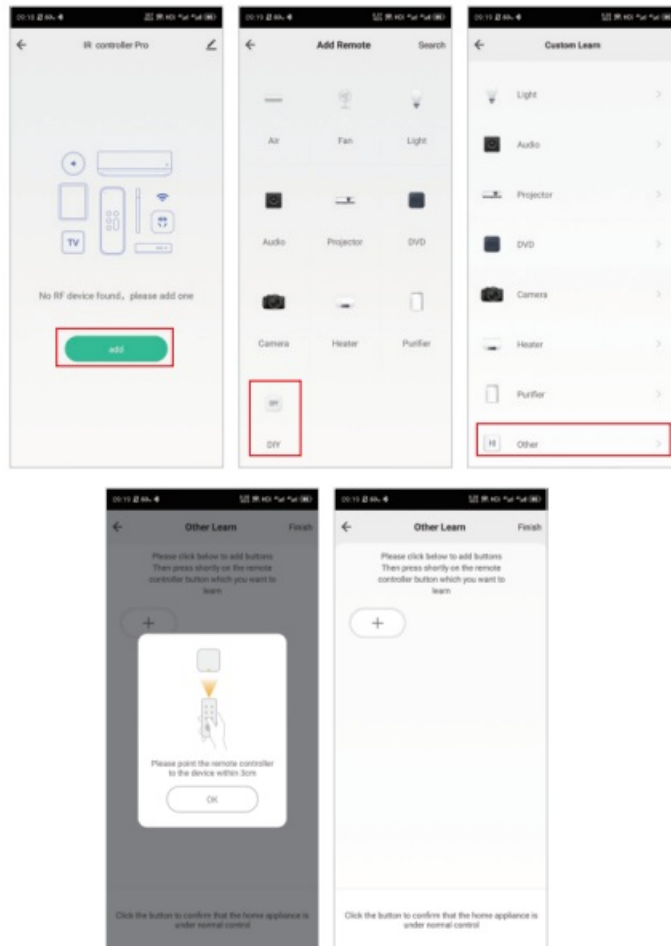


(2) After selecting the device (take the air conditioner as an example here), follow the APP prompts to add



4-1-2 DIY(Learning Function)

If your device is not in the above list, please choose DIY to add it.

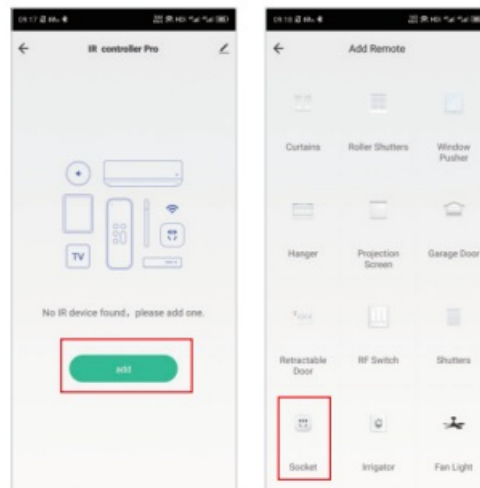


4-2 Radio frequency Remote

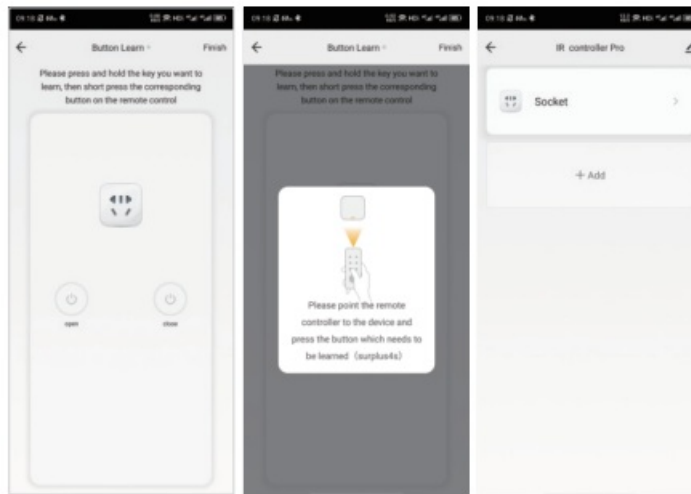
Support adding radio frequency device

4-2-1 General

(1) Select the RF remote device, click Add, and select the device to control.

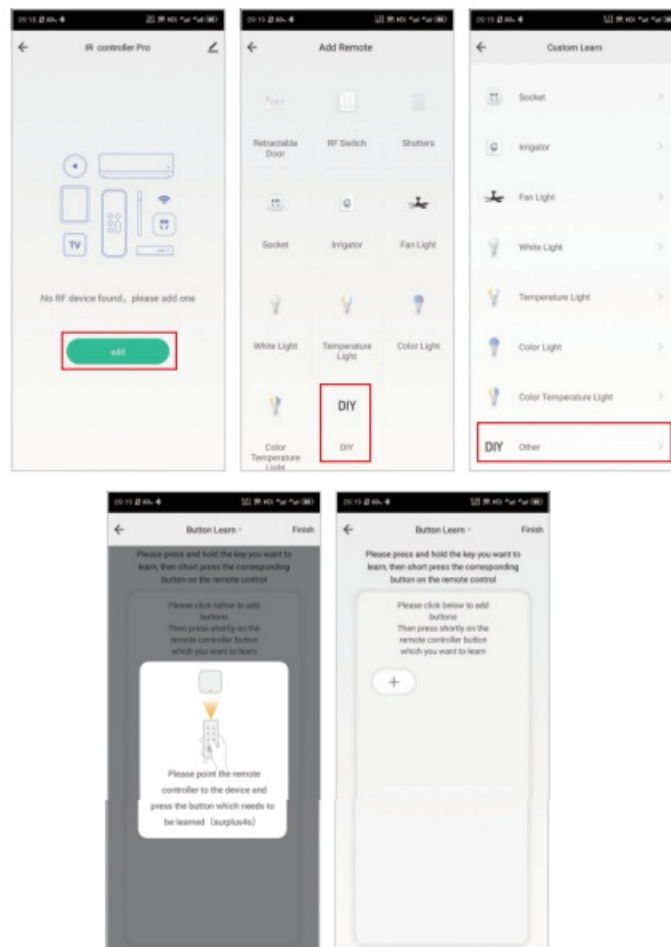


(2) After selecting the device (take the socket as an example here), follow the APP prompts to add



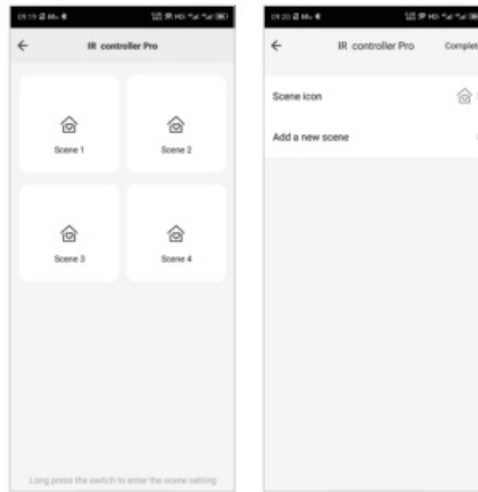
4-2-2 DIY(Learning Function)

If your device is not in the above list, please choose DIY to add it.



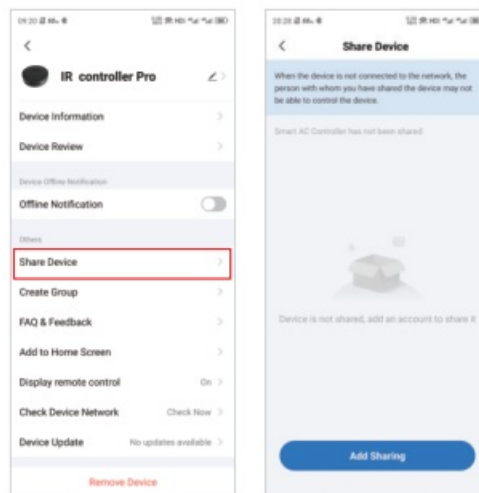
4-3 Scenes(Intelligent linkage)

which can be associated with other devices



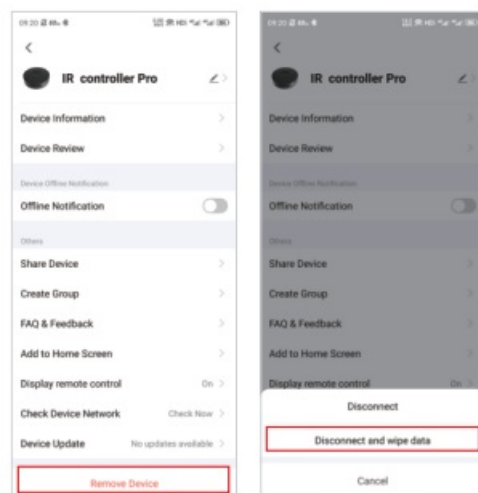
4-4 Device Settings

4-4-1 Share Device



4-4-2 Remove Device

Clear records; Delete the device through the APP and add the device again to clear the historical record



Due to the app update, the above interface is for reference only

feelspo't



[feelspot FS-IRF02W IR Remote Controller Pro](#) [pdf] Instructions

FS-IRF02W IR Remote Controller Pro, FS-IRF02W, IR Remote Controller Pro, IR Remote Contr
oller, Remote Controller, Controller