



## feelspot FS-G9 Smart Camera User Manual

[Home](#) » [FEELSPOT](#) » feelspot FS-G9 Smart Camera User Manual 

### feelspot FS-G9 Smart Camera User Manual



Thank you for using Feel spot smart camera.

#### Basic Parameters

**Product Name:** Smart Camera FS-G9

**Pixel:** 2.0Mp/3.0MP

**Video Compression:** H.264 H.265 High Profile

**Image Enhancement:** Digital Wide Dynamic 3D Noise Reduction

**Local Storage:** Micro TF card

**Wireless Encryption:** WEP/WPA/WPA2 Encryption

**Power Input:** 5V 1A(Min)

**Total Power Consumption:** 5W (Max)

**Wireless Standard:** 2.4G 802.11 b/g/n

**Support Platform:** Android/iOS

### **Component Description:**

**Reset Button:** Long press “reset” hole 5sec, reset success.

It is recommended to insert 8-12 8GB high-speed Micro TF card, otherwise it will not be able to store, view historical video and support Important functions such as firmware upgrading.

**Packing list:** Smart Camera FS-G9 × 1, Manual × 1, USB Power Cord × 1, Power Adapter × 1, Screw Accessories Package x 1

#### **Contents**

[1 Install APP](#)

[2 Add The Device-Scan QR code mode](#)

[3 Add device-WIFI fast connection mode](#)

[4 Matters Need Attention](#)

[5 Documents / Resources](#)

[6 Related Posts](#)

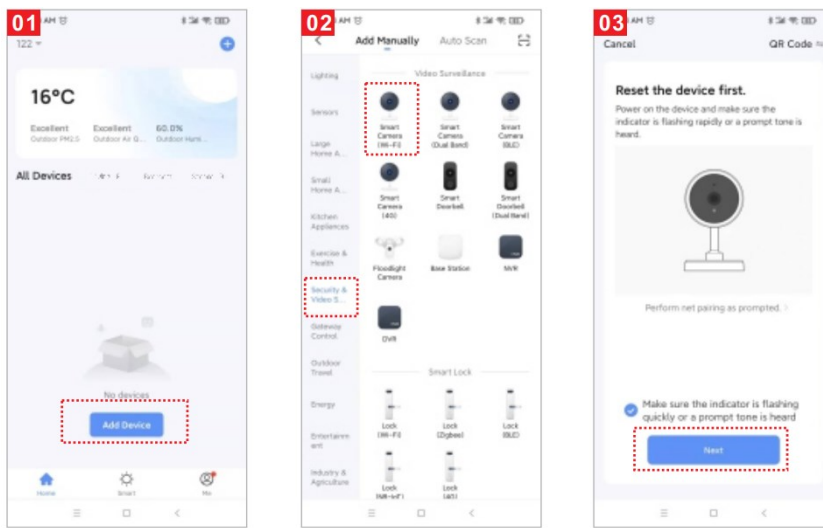
### **Install APP**

**Download APP:** scan the QR code below to download and install. Register and login: open the " Smart Life" APP to register and login according to the prompts.



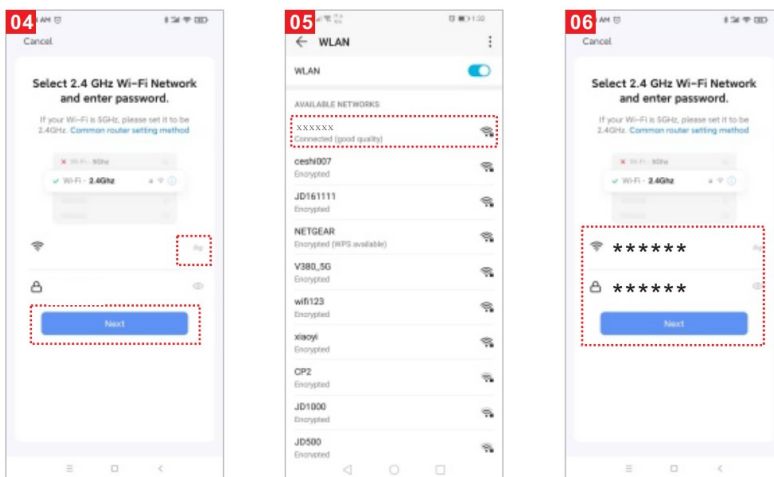
### **Add The Device-Scan QR code mode**

- Make sure Wi-Fi is available and connected to the Internet
- Connect the camera to the power, then system startup completed.
- Open "Smart Life" APP, press the '+' in the upper right corner of the main screen (Figure 01); choose "Security & Video Surveillance" click "Smart Camera" (Figure 02) to add camera; and then click "Next step" (Figure 03);

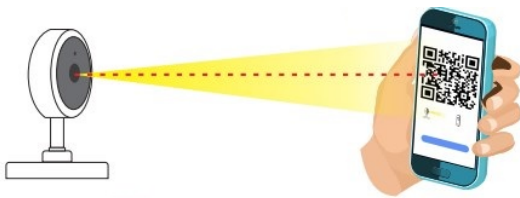


**Please note that only 2.4 GH Wi-Fi network is supported;**

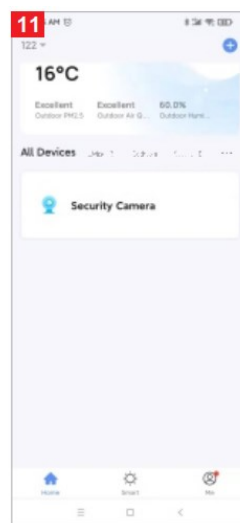
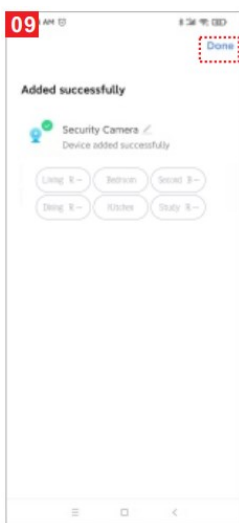
- If the mobile phone is not connected to wi-fi, please click “Connect to -”connecting” (Figure. 08); Wi-fi” (Figure 04);
- It will jump to the WLAN interface and connects Wi-Fi (Figure 05).
- If the phone is connected to Wi-Fi (Figure 06)



- A QR code will prompt on your screen and you need to scan it with the Smart Camera. (the camera is about 20-30 cm away from the mobile phone lens). Then click “hear the prompt sound” (Figure. 07.
- connecting” (Figure. 08);

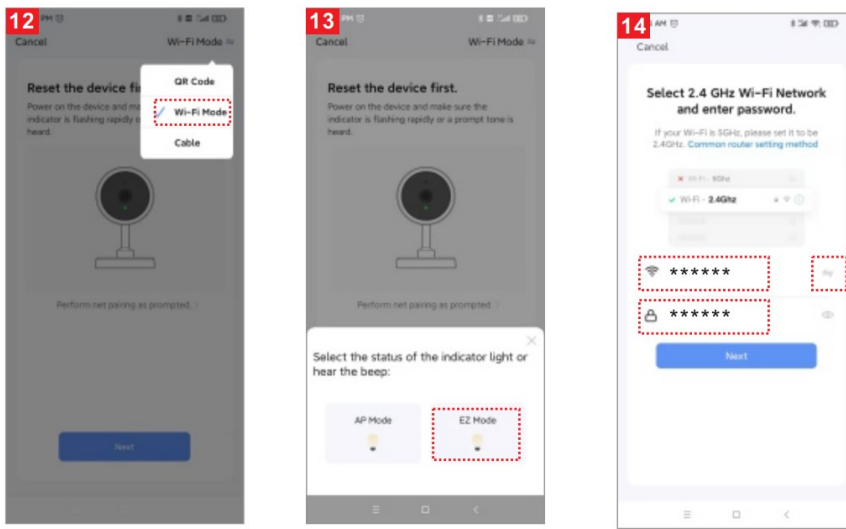


- connection completed (**Figure 09**), and click “Done
- Then jump to preview interface (**Figure 10**)
- After closing the device preview interface, the interface returns to the APP home page. At this time, the connected device will appear on the APP home page (**Figure 11**). Then you can click directly to the device interface to see the monitoring situation without re-adding afterwards.

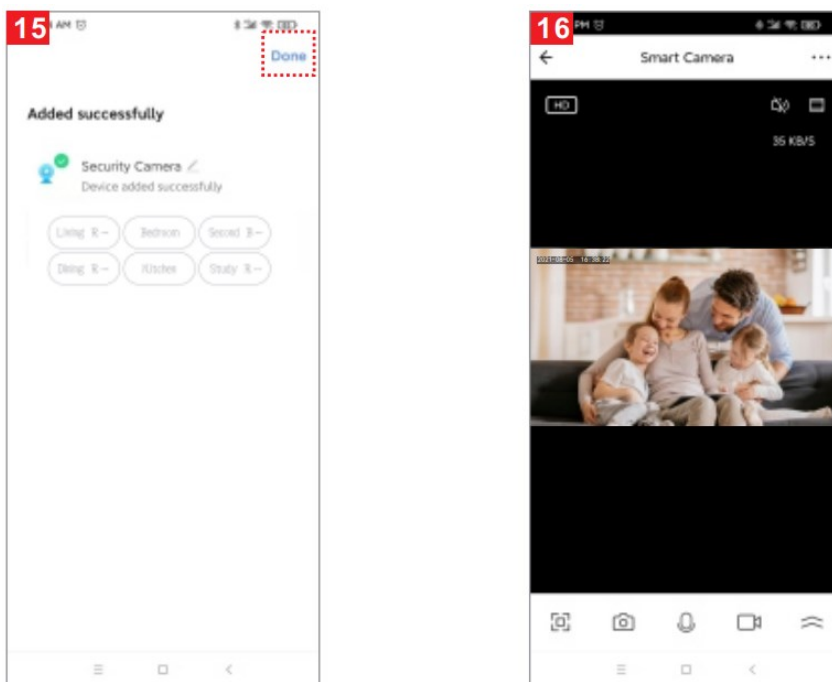


## Add device-WIFI fast connection mode

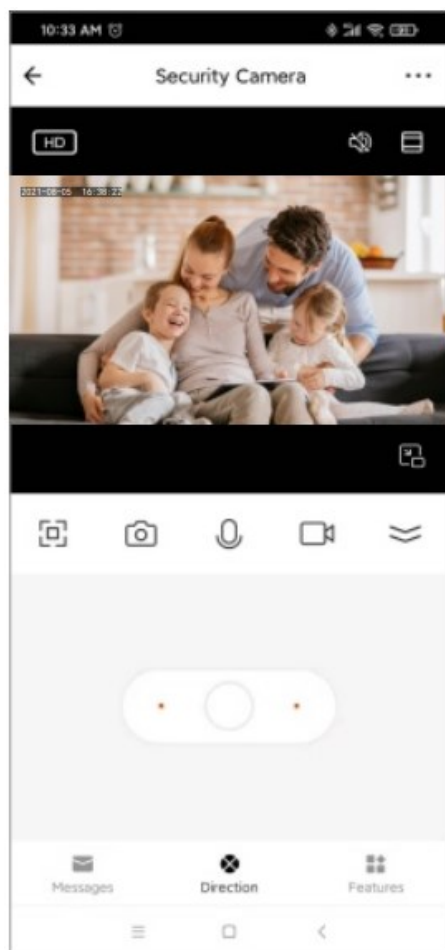
- Select “AP Mode” (**Figure 12**)
- Click Next (**Figure 13**)
- Enter the account and password that can connect to WIFI (**Figure 14**)



- Click to complete the connection (**Figure 15**)
- Video screen (**Picture 16**)



PTZ control screen.



## Matters Need Attention

Try to keep away from the metal space; Avoid the furniture , microwave oven blocked; Avoid the space where the audio, video and data lines are wound, and keep the space away from them as large as possible; Ensure that as close as possible to the coverage of wireless Wi-Fi signals. Switching network environment; In the new network environment, please press the reset hole about 5 seconds, then connect to the network.

The name and content of the harmful substances in the product

Part Name	Harmful Substance					
	Pb	Hg	Cd	Cr(VI)	PBB	PBDE
shell	<input type="radio"/>	<input type="radio"/>	<input type="radio"/>	<input type="radio"/>	<input type="radio"/>	<input type="radio"/>
Board	X	<input type="radio"/>	<input type="radio"/>	<input type="radio"/>	<input type="radio"/>	<input type="radio"/>
Charger	<input type="radio"/>	<input type="radio"/>	<input type="radio"/>	<input type="radio"/>	<input type="radio"/>	<input type="radio"/>
Annex	<input type="radio"/>	<input type="radio"/>	<input type="radio"/>	<input type="radio"/>	<input type="radio"/>	<input type="radio"/>
This form is based on the provisions of SJ/T 11364						

This product conforms to RoHS environmental protection requirements. At present, there is no mature technology in the world to replace or reduce the lead content in the electronic ceramics. porcelain, optical glass, steel and copper alloy.

Maintenance voucher of intelligent

Customer:\_\_\_\_\_ Mobile:\_\_\_\_\_

Address: \_\_\_\_\_

Model:\_\_\_\_\_ Camera ID:\_\_\_\_\_

Device store:\_\_\_\_\_ Date of purchase:\_\_\_\_\_

Store address:\_\_\_\_\_

Store contact number: \_\_\_\_\_

#### Maintenance voucher of intelligent

Customer:\_\_\_\_\_ Mobile:\_\_\_\_\_

Address: \_\_\_\_\_

Model:\_\_\_\_\_ Camera ID:\_\_\_\_\_

Device store:\_\_\_\_\_ Date of purchase:\_\_\_\_\_


Store address:\_\_\_\_\_

Store contact number: \_\_\_\_\_



# feelspo°t

## Documents / Resources

	<a href="#">feelspot FS-G9 Smart Camera</a> [pdf] User Manual FS-G9 Smart Camera, FS-G9, Smart Camera, Camera
---	--

Manuals+.