



# FEBSmart FS-AC60BT PCI Express Wireless AC Dual Band WiFi Bluetooth Adapter Installation Guide

[Home](#) » [FEBSmart](#) » FEBSmart FS-AC60BT PCI Express Wireless AC Dual Band WiFi Bluetooth Adapter Installation Guide 

FEBSmart FS-AC60BT PCI Express Wireless AC Dual  
Band WiFi Bluetooth Adapter  
Installation Guide



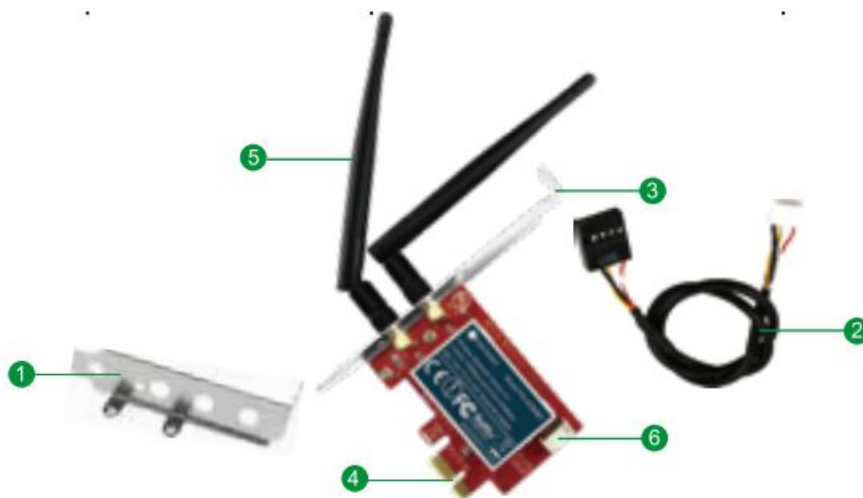
## PCI Express Wireless AC Dual Band WiFi Bluetooth Adapter

Model : FS-AC60BT FS-AC86BT

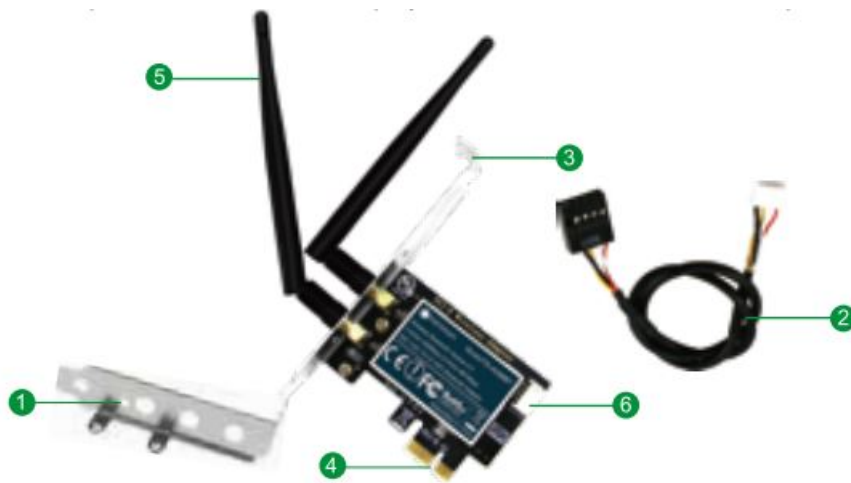
Official Site: [www.febsmart.com](http://www.febsmart.com) Tech-support: [support@febsmart.com](mailto:support@febsmart.com)

[www.febsmart.com](http://www.febsmart.com)  
[support@febsmart.com](mailto:support@febsmart.com)

FS-AC60BT PCIE Dual Band Wireless AC 600Mbps (2.4GHz 150Mbps or 5GHz 433Mbps) Wi-Fi Bluetooth 4.0 Adapter



FS-AC86BT PCIE Dual Band Wireless AC 1200Mbps(2.4GHz 300Mbps or 5GHz 867Mbps) Wi-Fi Bluetooth 4.2 Adapter



1. Low Profile Bracket
2. Bluetooth Cable
3. Full Height Bracket
4. PCIE X1 Interface
5. 2X Wi-Fi Antenna
6. Bluetooth Connector

## Contents

### 1 FS-AC60BT Product Description:

#### 1.1 Tech Specifications:

#### 1.2 System Requirements:

#### 1.3 Package:

### 2 FS-AC86BT Product Description:

#### 2.1 Tech Specifications:

#### 2.2 System Requirements:

#### 2.3 Package:

### 3 Install PCIE WiFi Card Hardware on PCs

### 4 Check if PCs Detected Wifi Card:

### 5 Check if WiFi Card Works Correctly

### 6 Driver Install Preparation

### 7 Install WiFi Driver on Windows PCs

### 8 User FAQs

### 9 Documents / Resources

### 10 Related Posts

## FS-AC60BT Product Description:

FS-AC60BT is an wireless AC 600Mbps dual band PCI Express WiFi adapter with bluetooth version 4.0. It offers fast speed, stable and few loss wireless connectivity at 2.4GHz 150Mbps and 5GHz 433Mbps max throughput on desktop PCs and Servers for internet surfing, online gaming and HD video streaming. Enabled Bluetooth 4.0 for audio device connection such as speakers, headphones, TWS earphones etc. It is an low cost and effective way add WiFi and bluetooth on home and office PCs.

### Tech Specifications:

Bluetooth version: Bluetooth 4.0

Major chipset: Qualcomm Atheros QCA9377

Wireless signal: IEEE 802.11AC 1-stream MIMO  
Compatible PCs: standard PC and slim size PCs  
Max Wi-Fi speed: 2.4GHz 150Mbps or 5GHz 433Mbps  
Working mode: Wi-Fi Adapter (Receiver) and Wireless AP  
Wireless standard: IEEE 802.11N, compatible with IEEE 802.11 a/b/g/ac/ax wireless AP or router.  
Hardware interface: PCI-E 2.0 X1 ,Works on PCIE X1, X4,XB, X16 slot, PCI E 1.X,2.X,3.X

#### **System Requirements:**

Linux Driver: ATH 1 OK. Driver Free on Windows 10,8.1,8 and Server 2012,2012R2,2016,2019(32/64bit).Need driver on Windows Server, 2003,2003R2,2008,2008R2 and Windows 7 (32/64bit).

#### **Package:**

1X FS-AC60BT;1X Mini CD; 1X User Manual;1XMounting Screw;2X 3dBi Antennas; 1 X Low Profile Bracket

#### **FS-AC86BT Product Description:**

FS-AC86 is an wireless AC1200Mbps dual band PCI Express WiFi adapter with bluetooth version 4.2. It offers ultra fast speed, stable and few loss wireless connectivity at 2.4GHz 300Mbps and 5GHz 867Mbps max throughput on desktop PCs or Servers for internet surfing, online gaming and Pro HD video streaming. Enabled Bluetooth 4.2 for audio device connection such as speakers, headphones, TWS earphones etc. it is an low cost and effective way add WiFi and bluetooth on home and office PCs.

#### **Tech Specifications:**

Bluetooth version: Bluetooth 4.2  
Major chipset: Qualcomm Atheros QCA61 X4A  
Wireless signal: IEEE 802.11AC 2-Stream MIMO  
Working mode: Wi-Fi Adapter (Receiver) and Wireless AP  
Wireless standard: IEEE802.11AC,compatible a/b/g/n/ac/ax  
Compatible device: standard and slim size PCs  
Max Wi-Fi speed: 2.4GHz 40MHz 300Mbps (802.11AC/N),  
5GHz 80MHz 867Mbps (802.11AC)  
Hardware interface: PCI-E 2.0 X1 ,Works on PCIE X1, X4,X8, X16 slot, PCIE 1.X,2.X,3.X

#### **System Requirements:**

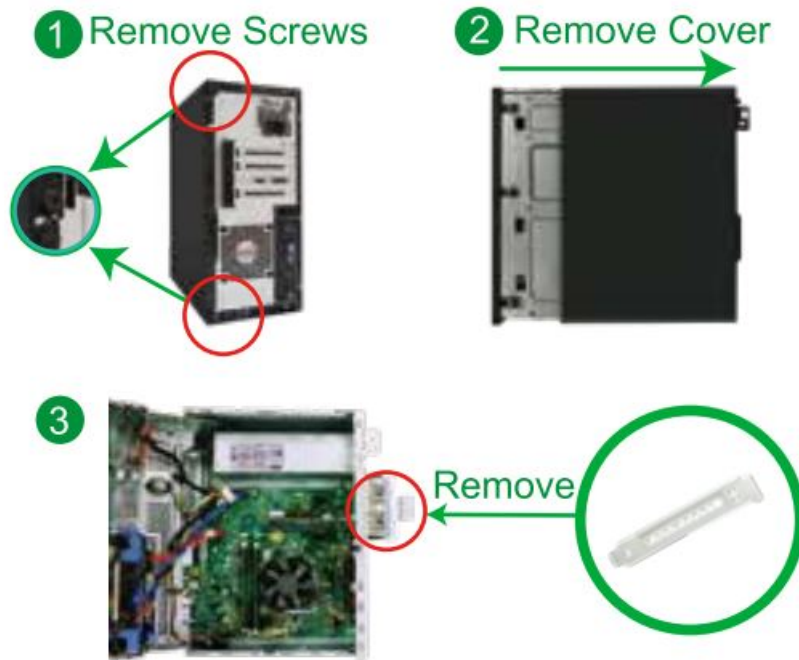
Linux Driver: ATH 1 OK. Driver Free on Windows 10,8.1,8 and Server 2012,2012R2,2016,2019(32/64bit).Need driver on Windows Server, 2003,2003R2,2008,2008R2 and Windows 7 (32/64bit).

#### **Package:**

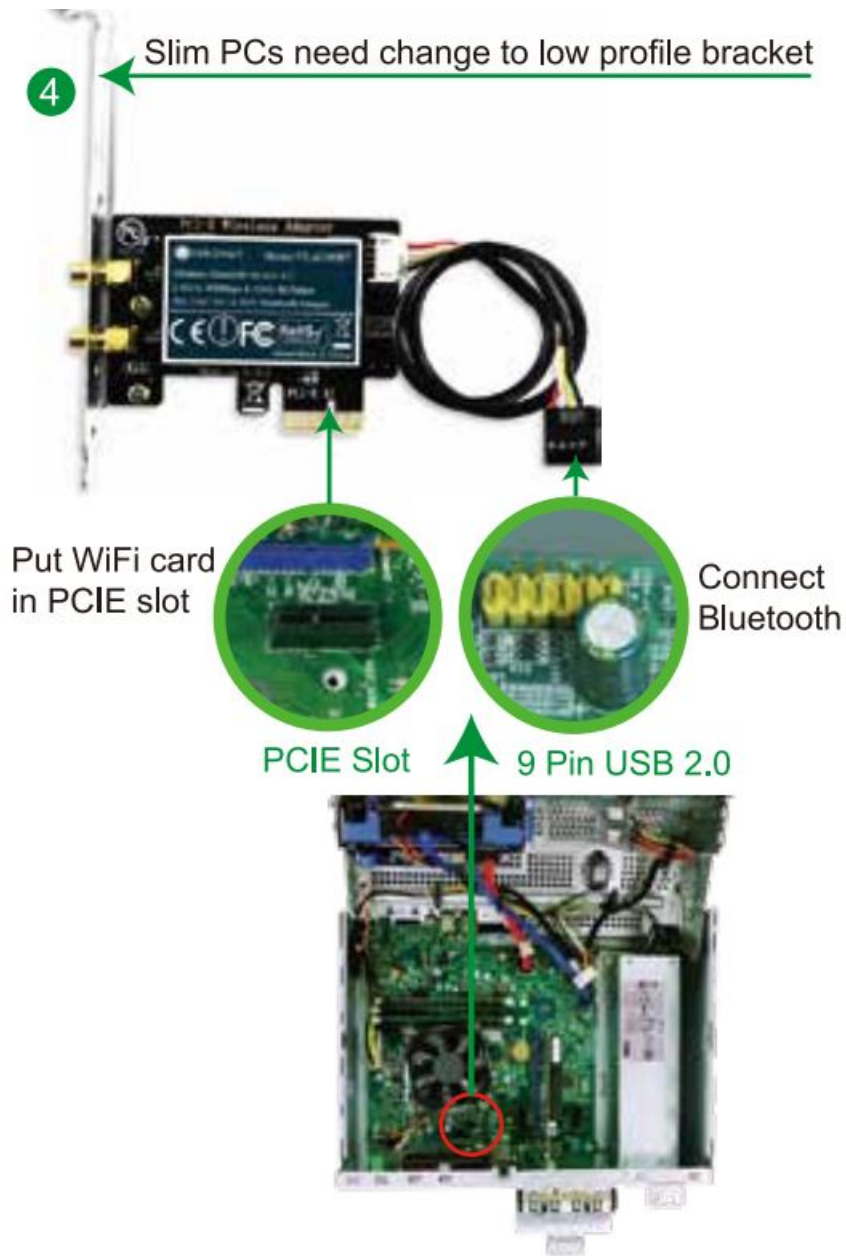
1X FS-AC86BT;1X Mini CD; 1X User Manual; 1XMounting Screw;2X 3dBi Antennas; 1X Low Profile Bracket

#### **Install PCIE WiFi Card Hardware on PCs**

**Step 1.** Switch OFF. unplug computer from main socket, unplug power-cord and other connected peripheral device. Remove PC case cover.



**Step 2.** Find correct PCI express slot. insert this wireless bluetooth card into an empty PCI-E slot on mother board. Find USB 2.0 9 Pin interface. plug in the bluetooth cable.

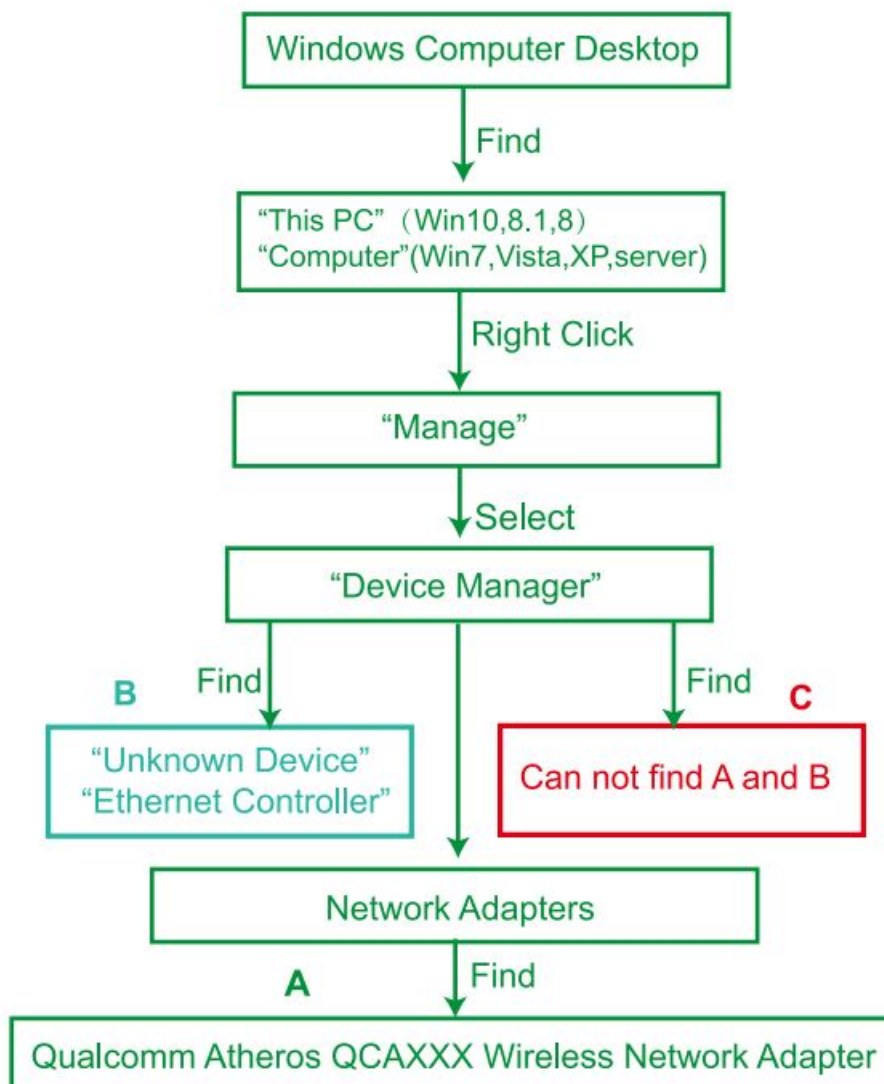


**Step 3.** Screw in the antennas directly to wireless network card. If needed, the antennas can be adjusted and face to wireless AP's direction. It will improve the wireless network reception. Then reattach the PCs cover. Put back all connected device and turn on computer.

(5) Screw on the WiFi Antenna



### Check if PCs Detected Wifi Card:



### Check if WiFi Card Works Correctly

- A. Can find "Qualcomm Atheros QCAXXX Wireless Network Adapter" in "Windows Device Manager-Network"

Adapters” Means users can use wireless network now.(Windows 10, 8.1, 8, Server 2012, 2012R2, 2016, 2019 32/64bit system)

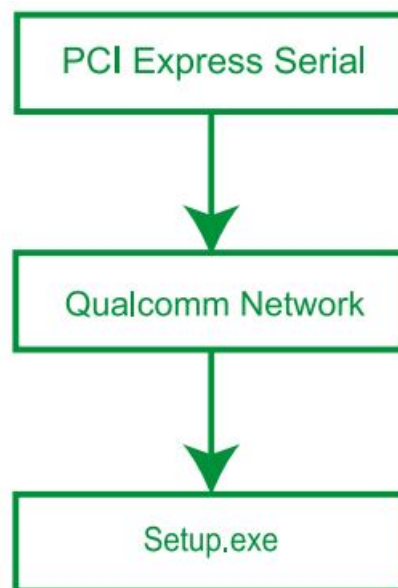
- B. Can't find 'Qualcomm Atheros QC Axxx Wireless Network Adapter', but PC can find a "Ethernet Controller"(Unknown Device) in "Windows Device Manager-Other Device". Means users have assembled this card on PCs correctly. And PC have detected hardware. Need to install drivers on PCs. Please install drivers in Mini CD. (Windows 7, Server 2008, 2008R2, 2003, 2003R2)
- C. Can't find A and B means user was not put on this wifi card well on PC. Or this PCIE slot is not active. We suggest user change to another PCI E slot and plug it again. Or just remove and re-plug it back.

## Driver Install Preparation

1. If PCs online, please visit our site [www.febsmart.com](http://www.febsmart.com), download driver.
2. If PCs offline, we suggest users use mini CD install the driver.
3. Linux users refer ATH1 OK driver to compile PCs.
4. Window users can refer wifi driver install steps as below. Bluetooth no need to install any driver.

## Install WiFi Driver on Windows PCs

**Step 1.** Follow the steps as below find correct driver for Wi-Fi bluetooth adapter in Mini CD or download from our site. Both FS-AC86BT and FS-AC60BT share driver file "Qualcomm Networks" in mini CD.



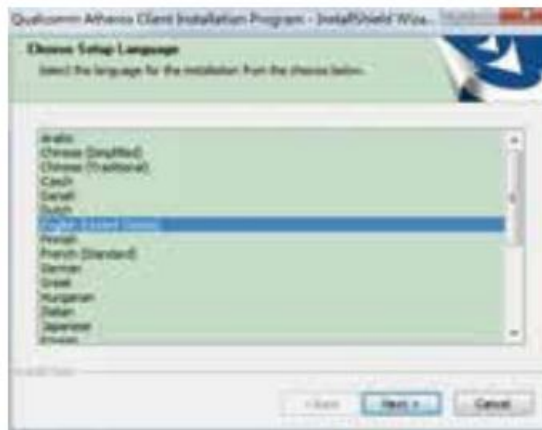
**Step2,** Double right-click the driver and running installation

1. Double right-click

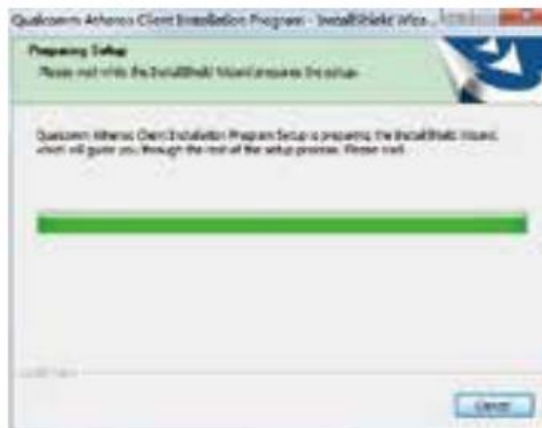


2. Select language

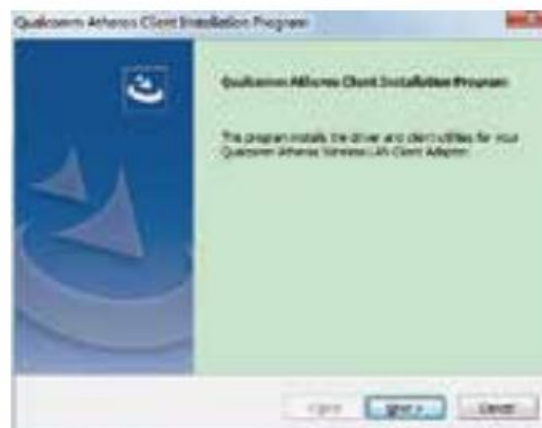




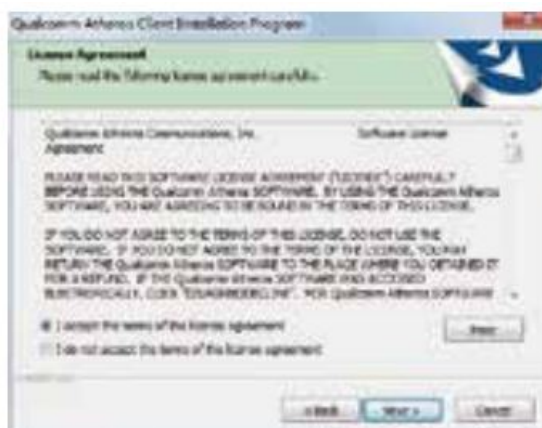
3. Waiting for preparation files ready.



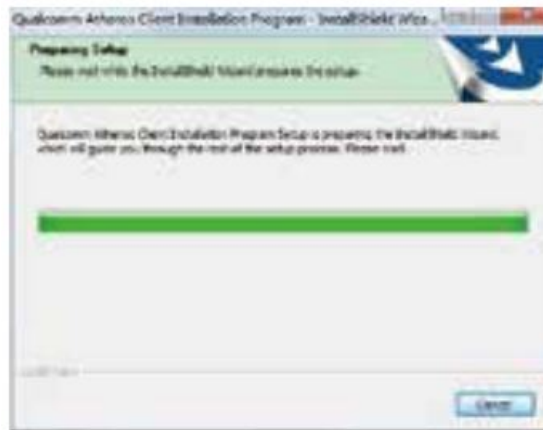
4. Click "Next"



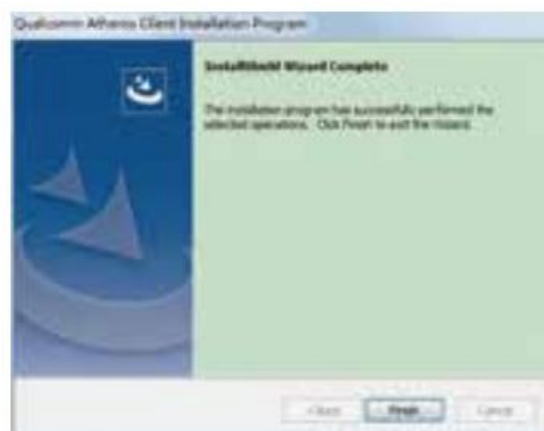
5. Accept the license



6. Waiting for program installation.



7. Click “Finish”, and using this card now



**Step3**, Connect to internet:

1. Locate the task bar in the bottom right corner of PC.
2. Select the wireless icon as below on each system.



Windows10



Windows 8,8.1



Windows 7

3.Select the Wi-Fi signal,fill correct password and connect to it.Afterward enjoy fast internet.

Windows10




Windows 8,8.1



Windows 7



**Step4,** Connect to Bluetooth device.

1. Locate the task bar in the bottom right corner of your desktop.
2. Click Bluetooth  icon. And follow windows reminder connect it to the Bluetooth device .

## User FAQs

**1. Why this card can't connect to 5G or PCs can't find 5G signal on my PC?**

PCs find 5GHz signal but can't connect: 1.Connect to 2.4G first, make sure it is connected.2. Find your 5G signal and connect. most of time will work. PCs cannot find my 5G signal but 2.4G works: 1.Connect 2.4G signal first. 2. Restart PC or re-plug this Wireless card. Or in Device Manager-Remove this card and install driver again. Then PCs will find 5GHz and will allow PCs connect.

**2. Why my PC find 2.4G signal only?**

PCs was placed too far away from Router.5GHz band will support more data speed but covers a small area. Wireless AP or Router's signal may cannot reach PCs location. Considers decrease the distance between Router and PC.

**3. I am a Linux user how can I get source code to compile my PC?**

Go to open the mini CD in the package find ATH10K links get source code online. Or go to our site download ATH1 OK.

**4. Windows10,8.1 ,8 system cannot load this card automatically how to fix this ?**

Just need to install the drivers in mini CD, device will works properly. If do not have CD ROM, please go to our site download drivers for the models in your hand.

**5. My PCs find few signals only, not as expected performance , how to fix this?**

Please remove Wi-Fi card from PCs and install it again. At the same time please screw Wi-Fi antenna and make sure it is screwed correctly. Most of time it is Wi-Fi antenna wasn't screwed properly.

**6. There a PCIE X16 port only.is it working on this?**

Absolutely YES, Works on PCIE X1 , X4, X8, X16 slot


**7. I have installed correct driver on my PCs but no Wi-Fi?**

Please check if your PCs was installed other version driver. If yes please delete that driver and re-install our driver.

**8. Where I can find support from Feb Smart ?**

Get prompt tech-support:[www.febsmart.com](http://www.febsmart.com) or [support@febsmart.com](mailto:support@febsmart.com)

**Documents / Resources**

	<a href="#">FEBSmart FS-AC60BT PCI Express Wireless AC Dual Band WiFi Bluetooth Adapter</a> [pdf]   Installation Guide FS-AC60BT, PCI Express Wireless AC Dual Band WiFi Bluetooth Adapter, FS-AC86BT
---	--