



Feb Smart Wireless N PCIE WiFi Adapter FS-N300 User Manual

[Home](#) » [Feb Smart](#) » Feb Smart Wireless N PCIE WiFi Adapter FS-N300 User Manual

Contents [[hide](#)]

1 Feb Smart Wireless N PCIE WiFi Adapter FS-N300/FS-N600HP User Manual

- 1.1 FS-N300 Product Features
- 1.2 FS-N600HP Product Features
- 1.3 Package List
- 1.4 Compatible System
- 1.5 Install PCIE WiFi Card Hardware on PCs
- 1.6 Check if PCs Detected WiFi Card
- 1.7 Check if WiFi Card Works Correctly
- 1.8 Driver Install Preparation
- 1.9 Install Driver
- 1.10 User FAQs
- 2 Documents / Resources
- 3 Related Posts

Feb Smart Wireless N PCIE WiFi Adapter FS-N300/FS-N600HP User Manual



Site: www.febsmart.com Support: support@febsmart.com

FS-N300 802.11N 2.4GHz 300Mbps PCIE WiFi Adapter



FS-N600HP 802.11N Dual Band 600Mbps (2.4GHZ 300 Mbps and 5GHz 300Mbps) PCIE Wireless Network Card



1. Low profile bracket
2. Full height bracket
3. Activity LED
4. Shield cover
5. PCI Express interface
6. 2X WiFi antenna

FS-N300 Product Features

1. Add 802.11 wireless N 300Mbps WiFi card on desktop computers by PCI Express 2.0 X1 interface.
2. Select Qualcomm Atheros AR928X network solution, provide reliable and solid wireless connectivity.
3. Supports 2X2 MIMO technology, allow PCs pick up wireless network at 2.4GHz 300Mbps max.
4. Fully compliant with 64/128WEP, WPA, WPA2, WPA-PSK/WPA2-PSK(KIP/AES) wireless network security.
5. PCIE X1 design works on PCIE X1,X2,X4,X8,X16 slot.
6. Seamless connect to IEEE 802.11a/b/g/n/ac/ax router.

FS-N600HP Product Features

1. Add 802.11N wireless dual band 600Mbps WiFi card on desktop PCs by PCI Express 2.0 X1 interface.

2. Select Qualcomm Atheros AR928X network, provide reliable and solid wireless connectivity.
3. Supports 2X2 MIMO technology, allow PCs pick up wireless network at 2.4GHz or 5GHz 300Mbps max.
4. Fully complaint with 64/128WEP, WA, WPA2, WPA-PSK/WPA2-PSK(KIP/AES) wireless network security.
5. PCIE X1 design works on PCIE X1,X2,X4, X8,X16 slot.
6. Seamless connect to IEEE 802.11a/b/g/n/ac/ax router.

Package List

FS-N300

1X FS-N300
2X WiFi antenna
1X Mount screw
1X Mini CD
1X Low profile bracket
1X User manual

FS-N600HP

1X FS-N600HP
2X WiFi antenna
1X Mount screw
1X Mini CD
1X Low profile bracket
1X User manual

Compatible System

1. Plug and Play on Windows 10,8.1,8 and Windows Serve 2012,2012R2,2016,2019(32/64bit) system.
2. Need to install driver on Windows XP, 7 and Windows Server 2003, 2003R2, 2008, 2008R2 (32/64bit) system.
3. Most of main stream Linux system support plug and play the driver for Linux is "ATH9K".

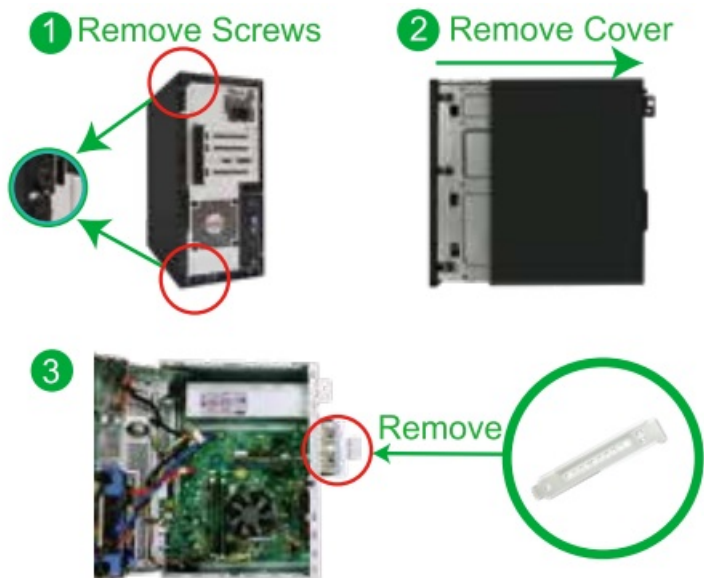
If users PC is online can not use CD-ROM, visit our site www.febsmart.com download driver.

If users PC offline just use this mini CD install driver.

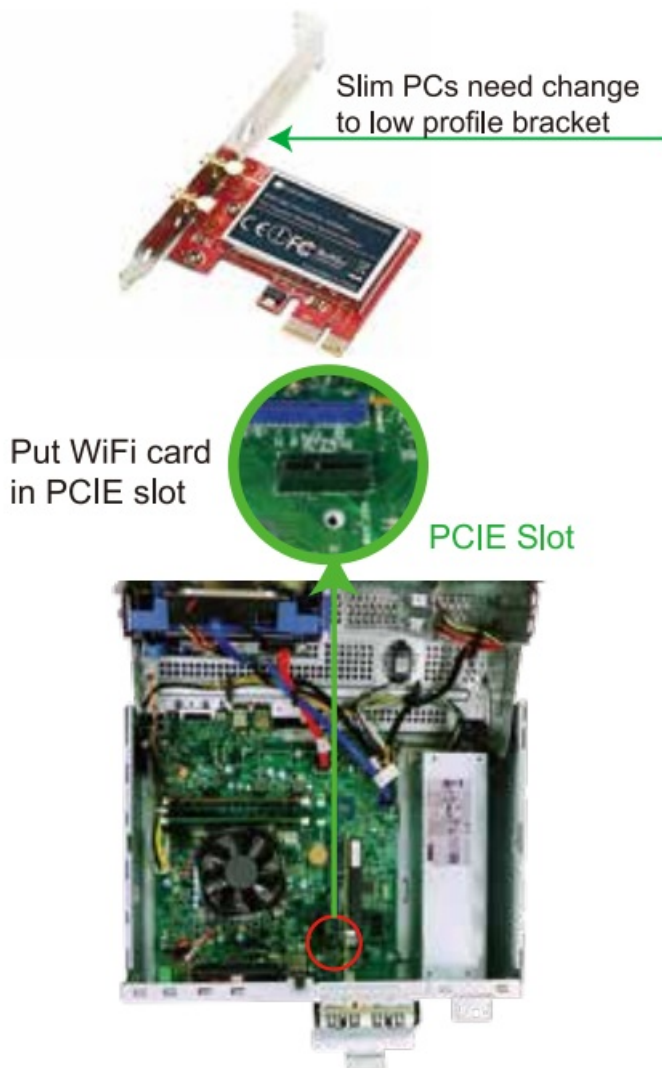
Any question about driver installation please contact us at support@febsmart.com

Install PCIE WiFi Card Hardware on PCs

Step 1. Switch OFF, unplug computer from main socket, unplug power-cord and other connected peripheral device. Remove PC case cover.



Step 2. Find correct PCI express slot, insert this wireless bluetooth card into an empty PCI-E slot on mother board.

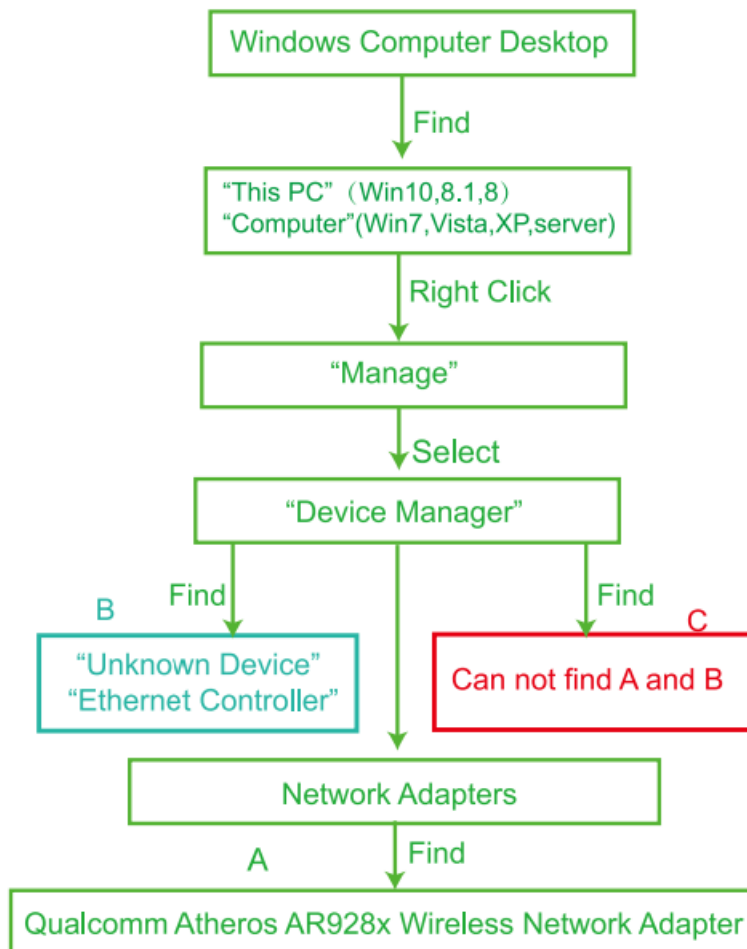


Step 3. Screw in the antennas directly to wireless network card. If needed, the antennas can be adjusted and face to wireless AP's direction. It will improve the wireless network reception. Then reattach the PCs cover, put back all connected device and turn on computer.

5 Scew on the WiFi Antenna



Check if PCs Detected WiFi Card



Check if WiFi Card Works Correctly

A. Can find "Qualcomm Atheros AR928X Wireless Network Adapter" in "Windows Device Manager-Network Adapters Means users can use wireless network now. (Windows10, 8.1,8, Server 2012,2012R2,2016,2019 32/64bit system)

B. Can't find "Qualcomm Atheros AR928X Wireless Network Adapter", but PC can find a "Ethernet Controller"(Unknown Device) in "Windows Device Manager-Other Device" Means users have assembled this card on PCs correctly.And PC have detected hardware, need to install drivers on PCs.

Please install drivers in Mini CD.(Windows 7,XP,Server 2008 2008R2,2003,2003R2)

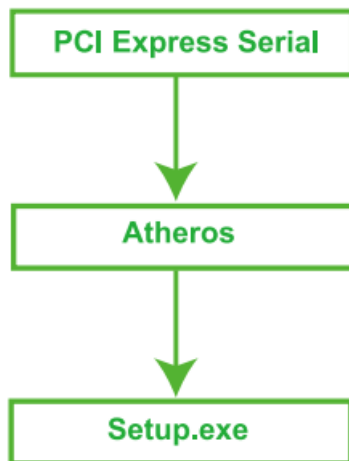
C. Can't find A and B, means user was not put on this wifi card well on PC.Or this PCIE slot is not active.We suggest user change to another PCIE slot and plug it again. Or just remove and re-plug it back.

Driver Install Preparation

1. If PCs online, please visit our site www.febsmart.com, download driver.
2. If PCs offline, we suggest users use mini CD install the driver.
3. Window10,8.1,8, Windows Server 2019,2016,2012R2, 2012(32/64bit) actually no need any driver.
4. Windows 7,XP,Server 2008,2008R2,2003,2003R2 32/64bit need to install driver.

Install Driver

Step 1. Follow steps, find correct driver in mini CD.



Step 2. Double right-click the driver and running installation.

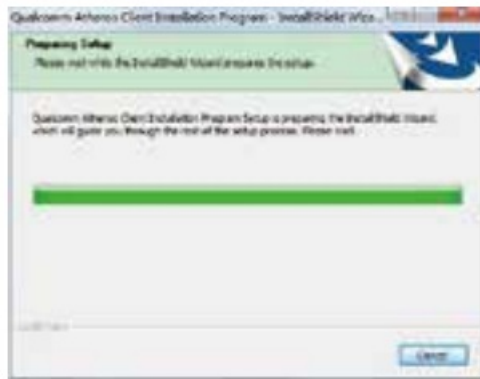
1. Double right-click



2. Select language



3. Waiting for preparation files ready.



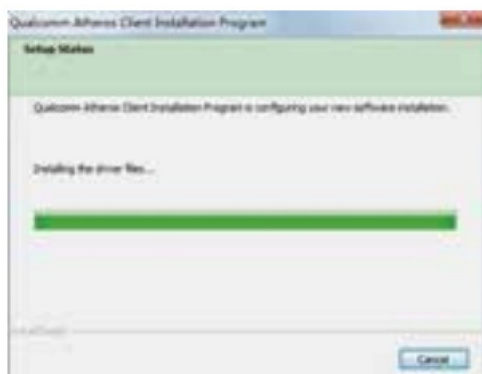
4. Click "Next"



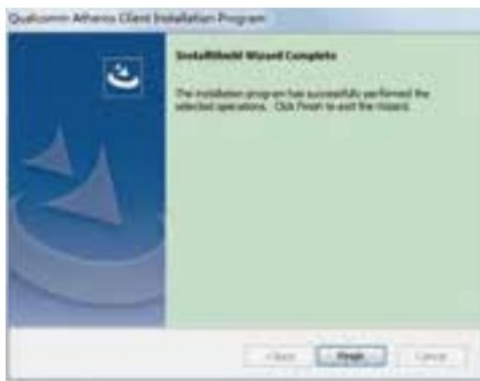
5. Accept the license



6. Waiting for program installation



7. Click "Finish", and using this card now



Step 3. Connect to internet:

1. Locate the task bar in the bottom right corner of PC.
2. Select the wireless icon as below on each system.



Windows10



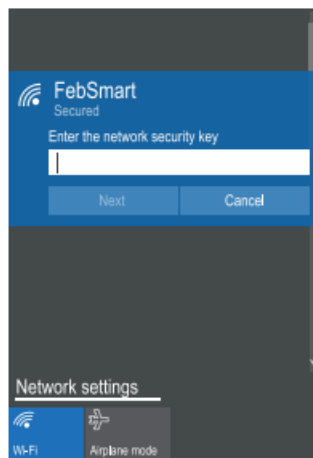
Windows 8,8.1



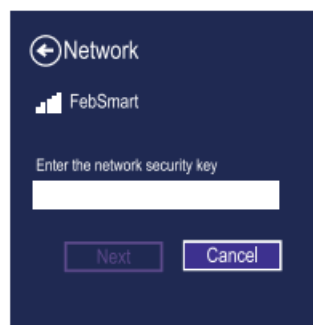
Windows 7

3. Select the Wi-Fi signal, fill correct password and connect to it. Afterward enjoy fast internet.

Windows10



Windows 8,8.1



Windows 7



User FAQs

1. Why this card can't connect to 5G or PCs can't find 5G signal on my PC?

PCs find 5GHz signal but can't connect:

1. Connect to 2.4G first, make sure it is connected.2. Find your 5G signal and connect, most of time will work. PCs cannot find my 5G signal but 2.4G works: 1.Connect 2.4G signal first.
2. Restart PC or re-plug this Wireless card. Or in Device Manager-Remove this card and install driver again for it. Then PCs will find 5GHz and will allow PCs connect.

2. Why my PC always get poor signal or drops connection?

A. Test Wi-Fi signal in PC area(same spot, same height) by cell phone check if PC was placed in a Wi-Fi dead zone if yes please

change location for PCs.

B. If the distance little long PCs will get poor signal or only 2.4G signal. To improve this please considers change the PCs or Wireless AP's location. Or you can buy a more power Wi-Fi antenna for it.

3. Why my PC find 2.4G signal only?

PCs was placed too far away from router.5GHz band will support more data speed by covers a small area. Wireless AP or Router's signal may cannot reach PCs location. Considers decrease the distance between Router and PC.

4. I am a Linux user how can I get source code ?

Go to open the mini CD in the package find ATH9K links get source code online.Or go to our site download ATH9K driver.

5. Windows10,8.1,8 system cannot load this card driver, how to fix this ?

1. Confirm the WiFi card was sit on the PCIE slot well.
2. Make sure windows update is enable.3.Install driver by hand.

6. My PCs find few signals only, not reach my expectation, how to fix this?

Remove Wi-Fi card from PCs and install it again.At the same time screw Wi-Fi antenna and make sure it is screwed correctly. Most of time it is Wi-Fi antenna wasn't screwed properly.

7. There a PCIE X16 port only, is it working on this?

Absolutely YES, Works on PCIE X1, X2,X4, X8, X16 slot

8. Where I can find support from Feb Smart?

Driver Download: www.febsmart.com

Tech-Support: support@febsmart.com

Documents / Resources



[Feb Smart Wireless N PCIE WiFi Adapter FS-N300](#) [pdf] User Manual
Feb Smart, FS-N300, Wireless, PCIE, WiFi, Adapter