



# Feb Smart PCI Express Wireless AC Dual Band Wi-Fi Adapter

[Home](#) » [Feb Smart](#) » Feb Smart PCI Express Wireless AC Dual Band Wi-Fi Adapter 

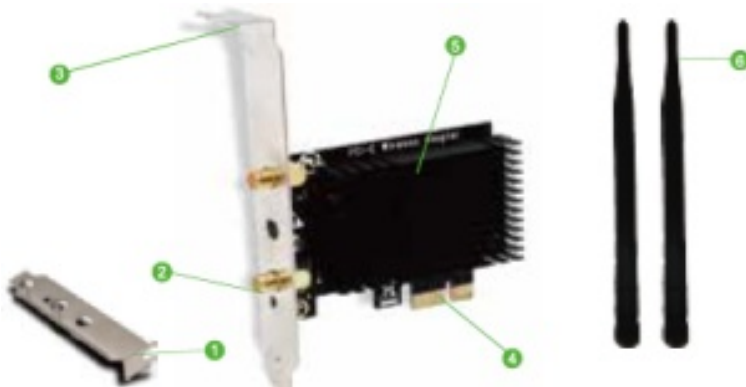
## Contents

- 1 Feb Smart PCI Express Wireless AC Dual Band Wi-Fi Adapter
  - 1.1 FS-AC87 Product Description:
  - 1.2 Product Tech Data:
  - 1.3 System Requirements:
  - 1.4 Package List:
  - 1.5 FS-AC85BT Product Description:
  - 1.6 Product Tech Data:
  - 1.7 Buletooth Installation:
  - 1.8 System Requirements:
  - 1.9 Package List:
- 2 Assemble Wi-Fi Adapter Desktop Computers:
- 3 Analytical Note :
  - 3.1 Find correct driver in Mini CD:
  - 3.2 How to get latest driver?
  - 3.3 Install Driver Software on Windows System:
- 4 Trouble Shooting Analyze :
- 5 Read More About This Manual & Download PDF:
- 6 Documents / Resources
  - 6.1 References
- 7 Related Posts

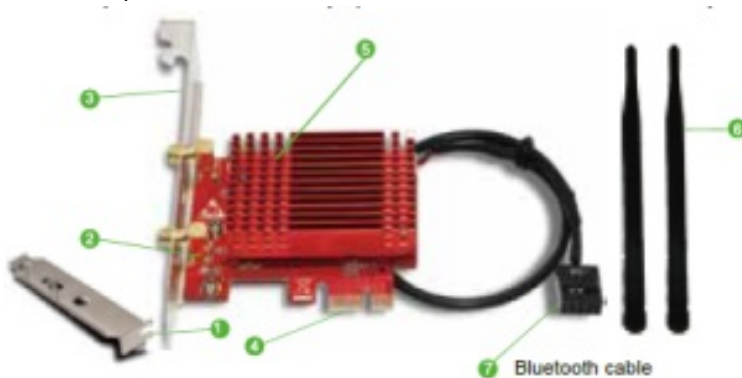
## Feb Smart PCI Express Wireless AC Dual Band Wi-Fi Adapter



FS-AC87 PCI Express (PCIE) Dual Band Wireless AC 1200 Mbps (2.4GHz 300Mbps or 5GHz 300Mbps) Wi-Fi Adapter.



FS-AC85BT PCIE Wireless AC Dual Band 1200Mbps (2.4GHz 300Mbps or 5GHz 867Mbps) with Bluetooth 4.2 Wi-Fi Adapter



1. Low profile bracket &
2. Activity Indicator
3. Standard profile bracket.
4. PCI express interface.
5. Heat sink
6. 2X5dBi Wi-Fi antenna

**FS-AC87 Product Description:**

FS-AC87 is a wireless AC dual band 1200Mbps PCI Express WiFi Adapter. It offers lightning fast speed, stable and few loss network connectivity at 2.4GHz 300Mbps and 5GHz 867Mbps max throughput. It is a easy and cost-effective way to add wireless network on (home or office use) PCs and Working Stations for internet surfing,online gaming and 4K Ultra HD video streaming etc.

**Product Tech Data:**

Major Chip: Qualcomm Atheros Operation Frequency: 5GHz and 2.4GHz Wireless Signal Type: 2x2 802.11AC 2-Stream Working Mode: Wi-Fi Adapter (Receiver) and Wireless AP Wireless Technology: TX Beamformee and 2X2 MU-MIMO Wireless Standard: IEEE802.11AC,compatible with a/b/g/n Max Wi-Fi Speed: 2.4GHz. 300Mbps,5GHz 80MHz 867Mbps.

**System Requirements:**

Driver free on Windows 10(32/64bit) Need driver on Windows Server,Windows 8, Windows 8.1 Windows 7(32/64bit).NOT for Windows XP,Vista.  
Linux Driver: ATH10K (Provide driver link only).

**Package List:**

1X FS-AC87;1X Mini CD; 1X User Manual;1XMounting Screw;2X 5dBi Antennas; 1X Low Profile Bracket.

**FS-AC85BT Product Description:**

FS-AC85BT is a wireless AC dual band PCIE WiFi Adapter with Bluetooth function. It offers lightning fast speed, stable and few loss network connectivity max throughput at 2.4GHz 300Mbps and 5GHz 867Mbps. Based on Qualcomm Atheros Network solution with advanced 802.11ac features such as 2X2MU-MIMO and Transmit Beamformee to increase network capacity.The added on Heatsink will cool PCIe WiFi card core components avoid over heat and ensure users connected device stays at peak speed.

The build in Bluetooth 4.2 allow PCs connect to any Bluetooth earphone and speakers. It is a easy way to add wireless network and Bluetooth on PCs for Audio transmission, internet surfing,online gaming and 4K Ultra HD video streaming.

**Product Tech Data:**

Main Chip: Qualcomm Atheros Operation Frequency: 5GHz and 2.4GHz Compatible Device: Standard and Mini Size PCs

Wireless Technology:2x2 MU-MIMO,TX Beamformee Bluetooth Technology: Dual Mode Bluetooth Version 4.2 Working Mode: Wi-Fi Adapter (Receiver) and Wireless AP

Wireless Standard: IEEE802.11AC,compatible with a/b/g/n Max Wi-Fi Speed:2.4GHz 300Mbps,5GHz 80MHz 867Mbps More Features: Heat sink technology make sure Wi-Fi adapter core components avoid over heat keep connected device stays at peak speed.

**Buletooth Installation:**

Plug the bluetooth cable one side with 4pin connector on PCIE Wi-Fi card,the other side with 9pin USB 2.0 connector on mother board(or PCs can't find bluetooth).

**System Requirements:**

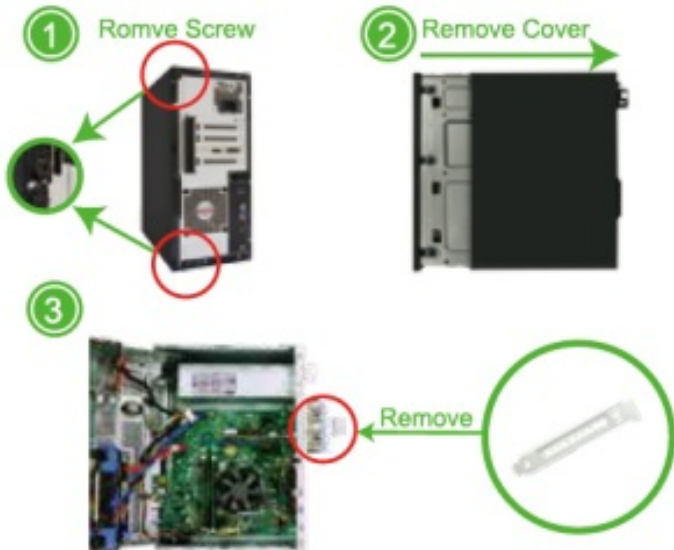
Driver free on Windows 10(32/64bit) Need driver on Windows Server,Windows 8, Windows 8.1 Windows 7(32/64bit).NOT for Windows XP,Vista. Linux Driver: ATH10K (Provide driver link only).

## Package List:

1X FS-AC86; 1X Mini CD; 1X User Manual; 1X Bluetooth cable; 2X 5dBi Antenna; 1X Mounting Screw; 1X Lower Profile Bracket.

## Assemble Wi-Fi Adapter Desktop Computers:

Step1. Switch OFF, unplug your computer from the main socket, unplug the power cord and other connected peripheral devices. Remove the cover from computer's case.



Step2. Find the correct PCI Express Slot, Insert the wireless network card into an empty PCI-E slot of the motherboard.

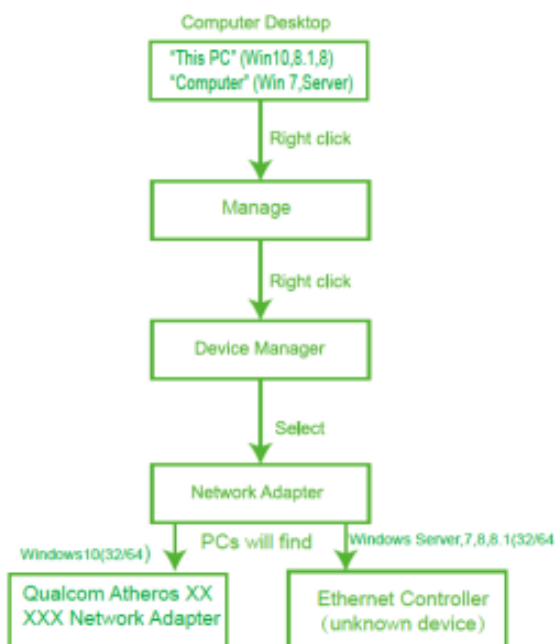


Step3. Screw in the antennas included directly to wireless network card. Note: If needed Position of the antennas can be adjusted to improve wireless reception. Reattach

the cover of computer case, turn on computer.



Find the Wi-Fi adapter on computers, check if the Wi-Fi adapter assembled properly:



### Analytical Note :

1. PC Can find "Qualcomm Network XXXXX Wireless Network Adapter" means PCs find Wi-Fi Adapter correctly and ready to work. Users do not need to install driver and use it directly. FS-AC87 and FS-AC85BT driver free on Windows10(32/64).
2. PCs Can't find "Qualcomm Atheros XXXXX Wireless Network Adapter" or PC can find it in a yellow triangle. Or PC can find a "Ethernet Controller"( Unknown Device) under Other Device in Device Manager. Means users

have assembled this card on PCs correctly. And PC have found it, but lack driver on users PCs. Please install drivers in Mini CD. FS-AC87 and FS-AC85BT need driver on Windows Server, Windows 8, Windows 8.1 Windows 7(32/64bit).

3. PCs can not find any Wi-Fi Adapter load information. A.Can not find Wi-Fi signal.B.Can not find find "Qualcomm Atheros XXXXX Wireless Network Adapter" or PC can find it in a yellow triangle.C.Can not find a "Ethernet Controller" ( Unknown Device) under Other Device in Device Manager. Please re-plug Wi-Fi Adapter into PCI-E slot again or try in other PCI-E slot.
4. Bluetooth is a plug and play device which is running USB signal.If PCs can not find bluetooth,please plug the packed cable on mother board USB 2.0 connector.(FS-AC85BT)

#### Find correct driver in Mini CD:

1. FS-AC87 works on Windows 10,8.1,8,7and Windows Server (32/64bit).Correct driver"Qualcom Network "file folder in mini CD.
2. FS-AC85BT works on Windows10,8.1,8,7and Windows Server(32/64bit).Correct driver"Qualcomm Network"file folder in Mini CD.

Please NOTE bluetooth function no need any driver for all connected PCs System,just make sure bluetooth cable connected correctly.

#### How to get latest driver?

1. PCs have CD ROM please open it directly refer install steps as below complete driver installation.
2. If computers can not read CD please try to download correct driver from our site [www.febsmart.com](http://www.febsmart.com) or contact us at [support@febsmart.com](mailto:support@febsmart.com)

#### Install Driver Software on Windows System:

**Step1.**Follow the steps as below find correct driver for Wi-Fi adapter in Mini CD or download from our site. FS-AC85BT and FS-AC87 driver file"Qualcomm Networks"



Step 2. Double right-click the software and running the software.

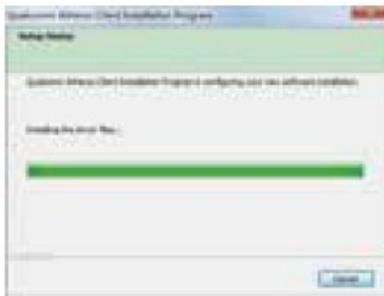
1. Double right-click



## 2. Select language



## 3. Waiting for preparation files ready .



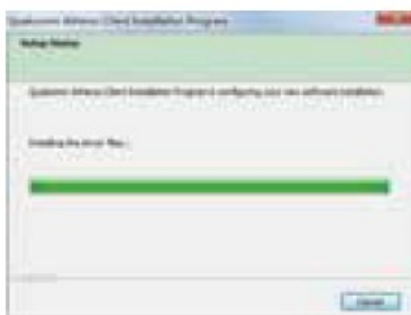
## 4. Click "Next"



## 5. Accept the license.



## 6. Waiting for program installation



## 7. Click "Finish", and using the new wireless network card.



### Step3. Connect to internet:

1. Locate the task bar in the bottom right corner of your desktop.
2. Select the Wireless icon as below on each system.



Windows 10



Windows8, 8.1



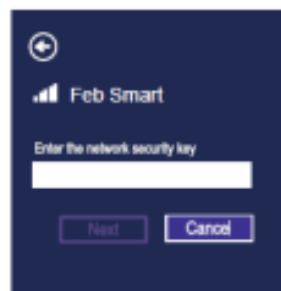
Windows7

3. Select the Wi-Fi signal, fill correct password and connect to it. Afterwards enjoy fast internet.

Windows 10



Windows 8,8.1 .



Windows 7



### Trouble Shooting Analyze :

1. Why my PC find bluetooth only do not have any WiFi ? In this case please install drivers for WiFi function,bluetooth is a Plug and Play device which is runing USB signal.But Wi-Fi using PCIe signal need to




install driver let the hardware communicate with Windows 10,8.1,8,7 or Windows Server system.

2. Why my PCs always get poor signal or drops sometimes? A. Test Wi-Fi signal in PC area(same spot, same height) by cell phone check if PC was placed in a Wi-Fi dead zone if yes, please change location for PCs. B. If the distance little long PCs will get poor signal or only 2.4G signal. To improve this please considers change the PCs or Wireless AP's location. Or you can buy a more power Wi-Fi Antenna for it.
3. Why my PC find 2.4G signal only? PCs was placed too far away from Router.5GH band will support more data speed by covers a small area. Wireless AP or Router's signal may cannot reach PCs location. Considers decrease the distance between Router and PC.
4. I am a Linux user how can I get source code to compile my PC? Go to open the mini CD in the package find ATH10K links get source code online.Or go to our site download ATH10K driver.
5. Windows10,8.1,8 system cannot load this card automatically how to fix this ? Just need to install the drivers in mini CD, device will works properly. If do not have CD ROM, please go to our site download drivers for the models in your hand.
6. My PCs find few signals only, not as expected performance, how to fix this? Please remove Wi-Fi card from PCs and install it again. At the same time please screw Wi-Fi antenna and make sure it is screwed correctly. Most of time it is Wi-Fi antenna wasn't screwed properly.
7. There a PCIE X16 port only,is it working on this ? Absolutely YES,Works on PCIE X1, X4, X8, X16 slot
8. I have installed correct driver on my PCs but no Wi-Fi ? Please check if your PCs was installed other version driver. If yes please delete that driver and re-install our driver.
9. My PC is a mini size how to install it ? We do have packed a low profile brackey for Mini PCs. Please open the attachment bag find it and use a screw driver remove the full height bracket and replace the low profile brackety 10.Where I can find support from Feb Smart ? Get prompt tech-support:www.febsmart.com or support@febsmart..com

### ***Read More About This Manual & Download PDF:***

#### **Documents / Resources**

	<a href="#">Feb Smart PCI Express Wireless AC Dual Band Wi-Fi Adapter</a> [pdf] PCI Express Wireless AC Dual Band Wi-Fi Adapter, FS-AC87, FS-AC85BT
---	--

#### **References**

-  [FebSmart](#)