



# Feb Smart Bluetooth Wi-Fi Adapter User Manual

[Home](#) » [Feb Smart](#) » Feb Smart Bluetooth Wi-Fi Adapter User Manual

*Feb Smart Bluetooth Wi-Fi Adapter User Manual*



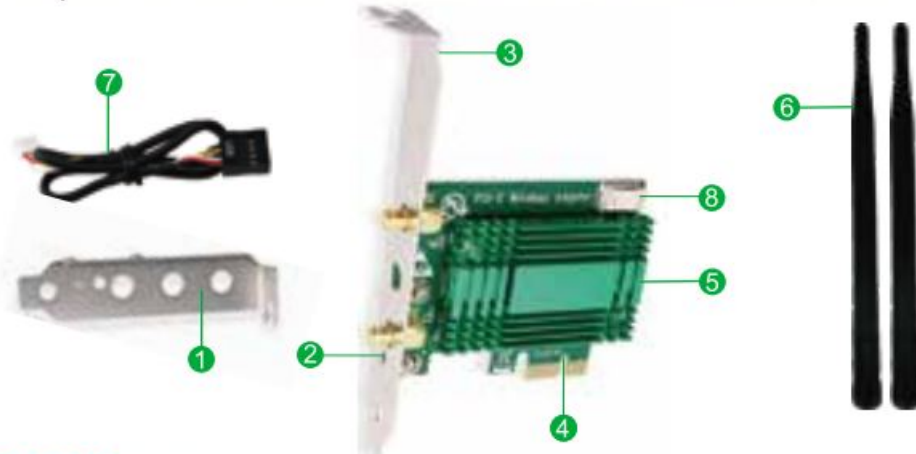
## PCI Express Wireless Network Bluetooth Wi-Fi Adapter

- AX3000 Intel WiFi 6 AX200NGW
- AC2030 Intel Wireless-AC 9260

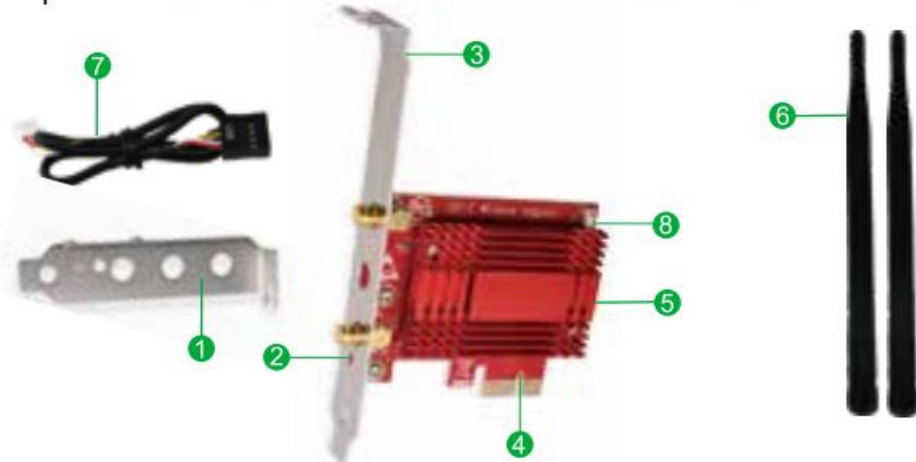
Site:[www.febsmart.com](http://www.febsmart.com) Contacts:[support@febsmart.com](mailto:support@febsmart.com)

[www.febsmart.com](http://www.febsmart.com)  
[support@febsmart.com](mailto:support@febsmart.com)

**AX3000** PCIE WiFi 6 Wireless Dual Band 3000Mbps Network Adapter with Bluetooth 5.0-Intel Wireless WiFi 6 AX200NGW



**AC2030** PCIE Wireless AC Dual Band 2030Mbps Wi-Fi Network Adapter with Bluetooth 5.0-Intel Wireless-AC 9260NGW



1. Low profile bracket
2. Activity indicator
3. Full height bracket
4. PCIe X1 interface
5. HeatSink
6. 2X Wi-Fi antenna
7. Bluetooth cable
8. Bluetooth connector

## Contents [ [hide](#) ]

### 1 AX3000 Description:

#### 1.1 Product Tech Data:

#### 1.2 System Requirements:

#### 1.3 Package List:

### 2 AC2030 Description:

#### 2.1 Product Tech Data:

#### 2.2 System Requirements:

#### 2.3 Package List:

### 3 Install WiFi Adapter Hardware on PCs:

### 4 How to get latest driver?

### 5 Find best way to install driver

### 6 Install Driver on Linux and Windows 10 64bit System:

### 7 Connect to Bluetooth Device

### 8 Connect to Internet

### 9 How to contact with us ?

### 10 Documents / Resources

### 11 Related Posts

## AX3000 Description:

**AX3000** is based on Intel wireless WiFi 6AX200 NGW WiFi module. It supports latest 802.11AX WiFi 6 technology, provide a dual band WiFi connection for desktop computers on 2.4GHz 574Mbps and 5GHz 2400Mbps with Bluetooth 5.1. It is a cost-effective way to add wireless network and Bluetooth on PCs and servers for online gaming and HD video streaming etc.

### Product Tech Data:

WiFi Module: Intel WiFi 6 AX200NGW

Bluetooth Version: Dual Mode Bluetooth 5.0

Operation Frequency: 5GHz and 2.4GHz

Wireless Signal Type: 802.11AX WiFi 6 Dual Stream

Working Mode: Wi-Fi Adapter (Receiver) and Wireless AP

Wireless Technology: TX Beamformed and MU-MIMO

Wireless Standard: IEEE802.11 WiFi 6, compatible with a/b/g/n/ac

Max Wi-Fi Speed: 2.4GHz 574Mbps, 5GHz 2400Mbps

### System Requirements:

Need to install WiFi and Bluetooth driver on Windows 10 64bit

Need to compile on Linux Kernels 5.1+

NOT for other Windows systems and MAC systems.

### Package List:

- 1X AX3000
- 1X User Manual
- 2X WiFi Antennas
- 1X Bluetooth Cable
- 1X Mini CD
- 1X Mounting Screw

- 1 X Low Profile Bracket

## **AC2030 Description:**

**AC2030** is based on Intel Wireless-AC 9260 NGW WiFi module. It provide a wireless AC super fast speed. stable and little loss network connectivity on 2.4GHz 300Mbps and 5GHz 1730Mbps with Bluetooth 5.0 for desktop PCs. It is a cost-effective way to add wireless network and Bluetooth on PCs and servers for internet surfing, online gaming and HD video streaming etc.

### **Product Tech Data:**

WiFi Module: Intel Wireless AC 9260NGW  
Bluetooth Version: Dual Mode Bluetooth 5.0  
Operation Frequency: 5GHz and 2.4GHz  
Compatible Device: Standard and Mini Size PCs  
Wireless Technology: 2x2 MU-MIMO, TX Beamformed  
Working Mode: Wi-Fi Adapter (Receiver) and Wireless AP  
Wireless Standard: IEEE 802.11AC, compatible with a/b/g/n  
Max Wi-Fi Speed: 2.4GHz 300Mbps, 5GHz 1730Mbps

### **System Requirements:**

Need to install WiFi and Bluetooth driver on Windows 10 64bit  
Need to compile on Linux Kernels 4.14+  
NOT for other Windows systems and MAC systems.

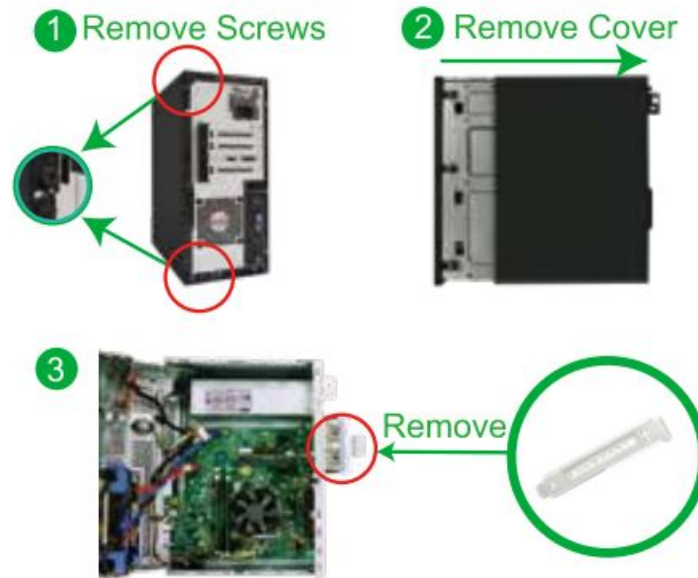
### **Package List:**

- 1X AC2030
- 1X User Manual
- 1X Mounting Screw
- 1X Bluetooth Cable
- 1X Mini CD
- 2X WiFi Antenna
- 1X Lower Profile Bracket

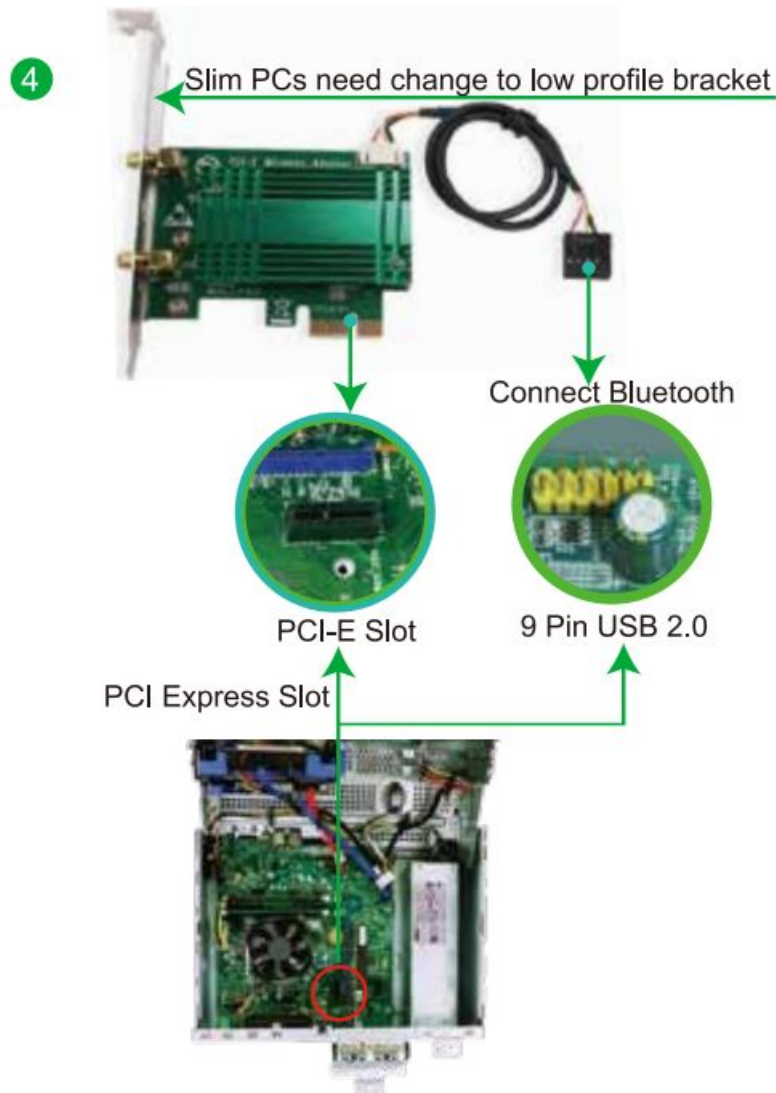
## **Install WiFi Adapter Hardware on PCs:**

**Step 1.** Switch OFF, unplug computer from main socket, unplug power-cord and other connected peripheral device.

Remove PC case cover.

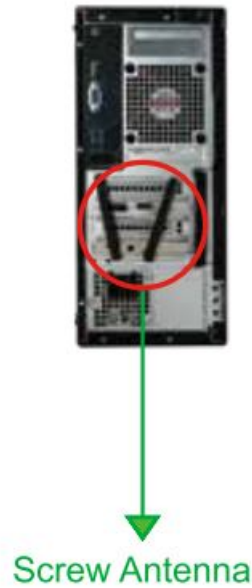


**Step 2.** Find correct PCI express slot. insert this wireless Bluetooth card into an empty PCI-E slot on mother board .Find USB 2.0 interface plug in the Bluetooth cable.



**Step 3.** Screw in the antennas directly to wireless network card. If needed. the antennas can be adjusted and face to wireless AP's direction. It will improve the wireless network reception. Then reattach the PCs cover, put back all connected device and turn on computer.

## 5 Screw on the WiFi Antenna



### How to get latest driver?

1. If PCs have CD ROM please open Mini CD directly, refer install steps as below complete driver installation.
2. If computers can not read CD please try to download correct driver from our site [www.febsmart.com](http://www.febsmart.com) or contact us at [support@febsmart.com](mailto:support@febsmart.com)
3. Get driver from [www.Intel.com](http://www.Intel.com), search "AX200NGW" or "Wireless-AC 9260 NGW" download driver for PCs.

### Find best way to install driver

1. PCs is online. Have internet connection already. Link to [www.intel.com](http://www.intel.com), search "AX200NGW" or "Wireless-AC9260 N GW" find latest driver for Windows 10 64bit and install driver to active this WiFi Bluetooth card.
2. PCs is offline. No internet connection. Need to install driver from Mini CD and select correct driver by hand. Refer driver install steps as below.

### Install Driver on Linux and Windows 10 64bit System:

#### Step 1. Know PC System Version

1. Windows 10-Desktop-Left click select "This PC" Right- click select "Properties"-Check info "Windows Edition" and "System Type". Make sure Windows system is Windows10 64bit or WiFi Bluetooth card will not works.

#### Step 2. Select Correct Driver from Mini CD for PCs. Open Mini CD then refer steps as below.

#### Windows 10 64bit Users:

AX3000 and AC2030 compatible with Windows 10 64bit system only. Both these two models share installation steps on Windows 10 64bit. So Windows users please click "WiFi Driver" and "Bluetooth Driver" from Mini-CD.

## Linux Kernels Users:

1. AX3000 supports Linux Kernel 5.1+.Linux users please select from Mini-CD get source code: "Linux Driver-Intel AX200"
2. AC2030 supports Linux Kernel 4.14+.Linux users please select from Mini-CD get source code: "Linux Driver-Intel 9260"

## Step 3. Install Wifi driver on Windows10 64bit system.

1. Double right-click the software and running software



WiFi Driver

2. Accept license. Click Install.



3. Waiting the installation.



4. Installation done. Restart PC.





#### Step 4. Install Bluetooth driver.

1. Double right-click the software and running software



Bluetooth Driver

2. Click "Next"



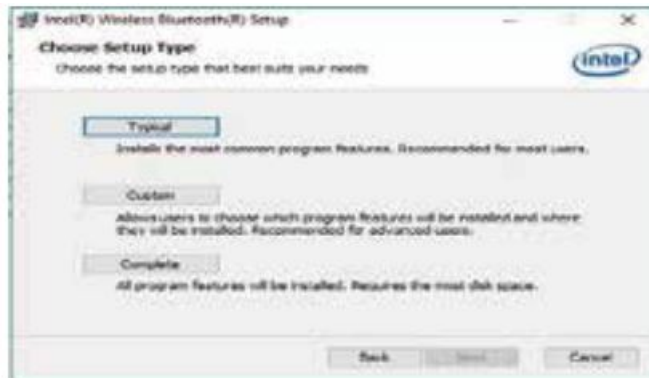
3. Click "Next"



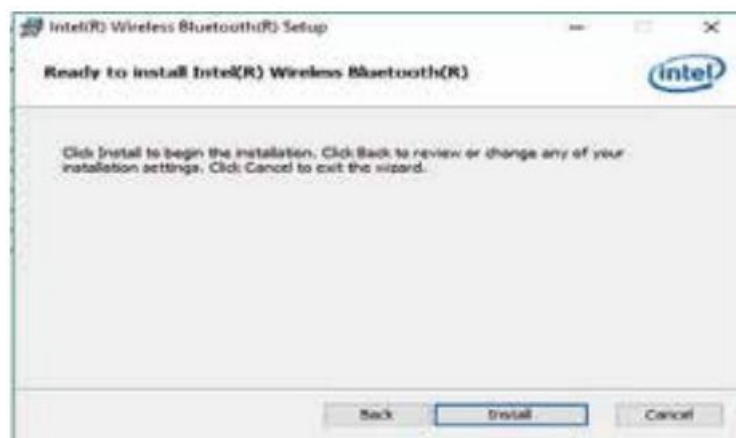
4. Accept license. Click Install.



5. Choose setup type. Click "Typical".



6. Click "Install"




7. Click "Finish", Bluetooth driver installation done.



## Connect to Bluetooth Device

### Connect to Bluetooth device:

1. Locate the task bar in the bottom right corner of your desktop.
2. Click Bluetooth.  icon. And follow windows reminder connect it to the Bluetooth device.

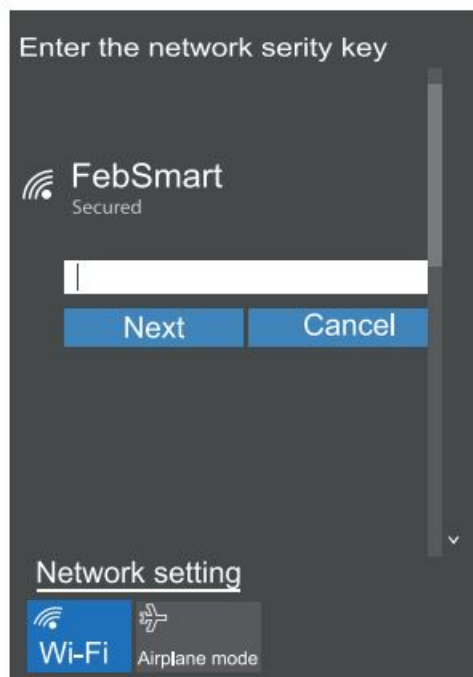
## Connect to Internet

1. Locate the task bar in the bottom-right corner of desktop.
2. Select the wireless icon as below on Windows 10 64bit system.



**Windows10**

3. Select WiFi signal around PCs, fill correct password connect to it. Afterwards enjoy super speed internet.




**Windows 10**

## How to contact with us ?

Our Site: [www.febsmart.com](http://www.febsmart.com)  
Latest Driver: [www.intel.com](http://www.intel.com)  
Support: [support@febsmart.com](mailto:support@febsmart.com)

## Documents / Resources

	<p><a href="#">Feb Smart Bluetooth Wi-Fi Adapter</a> [pdf] User Manual</p> <p>Feb Smart, PCI, Express, Wireless, Network, Bluetooth, Wi-Fi, AC2030 Intel Wireless-AC 9266, PCIE WiFi 6 Wireless, Adapter</p>
---	--