



Farmice BF15 Smart AI Recognition Bird Feeder Camera Instruction Manual

[Home](#) » [Farmice](#) » Farmice BF15 Smart AI Recognition Bird Feeder Camera Instruction Manual 

Contents

- [1 Farmice BF15 Smart AI Recognition Bird Feeder Camera](#)
- [2 Product Usage Instructions](#)
- [3 WARM TIPS](#)
- [4 WHAT'S IN THE BOX](#)
- [5 SPECIFICATIONS FOR BIRD FEEDER](#)
- [6 INTRODUCTION FOR BIRD FEEDER](#)
- [7 INDICATOR LIGHT](#)
- [8 HOW TO CONNECT TO THE APP](#)
- [9 APP INTERFACE INTRODUCTION](#)
- [10 TOP COVER INSTALLATION](#)
- [11 HOW TO INSTALL](#)
- [12 HOW TO CHARGE THE CAMERA](#)
- [13 Documents / Resources](#)
 - [13.1 References](#)
- [14 Related Posts](#)

Farmice

Farmice BF15 Smart AI Recognition Bird Feeder Camera



Specifications for Bird Feeder

- **Product Model:** BF15
- **Charging:** Solar panel and charging cable
- **Battery:** 5200 mAh Rechargeable Lithium-Ion Battery
- **Resolution** Operating Temperature
- **Wireless Type:** WiFi 2.4GHz
- **Field of View**
- **Dimension:** L9.05 * W9.13 * H13.03 inches (23 * 23.2 * 33.1 cm)
- **Power Supply:** DC 5V2A
- **Power Consumption:** 2W(Max.)
- **Battery Life:** 4-6 years
- **Night Visual Range:** 8m(Max)
- **Anti-flicker:** 50HZ /60HZ

What's in the Box

- Drill Sticker
- Perch
- Bird feeder
- Bird feeder bracket
- External solar panel

- Bracket connector
- Screw*3
- Green screws spacers *4
- Screw for bracket *4
- Pin
- Waterproof Screw for Charging cable
- Rubber perch*2

Introduction for Bird Feeder

- Bird Feeder Roof
- Camera
- Perch
- Bracket

Introduction for Camera

- Indicator Light
- Infrared LED
- Microphone
- Motion sensor
- Light sensor
- Lens
- Mounting hole
- Speaker
- Power ON/OFF
- Sync/Reset
- Charging port
- TF card slot (Capacity expansion 128G)

Indicator Light

1. Camera turn on: Red light always ON.
2. Pairing mode: Red light fast blinking.
3. Network connecting: Green light fast blinking.
4. Network connected: Green light always ON.
5. Abnormal status: Red light slow blinking. (Need to reset)
6. During firmware update: The yellow light is always ON.
7. Charging status: White light always ON during charging and OFF after fully charged.

How to Connect to the App

Download or scan the QR code and install the Bird Lover App for either IOS or Android. Once downloaded, the APP will prompt you to register your device. Enter your phone number or email address which one makes you feel comfortable and select the country you live in. You will receive the registration code. Input the registration code,

then create a password.

Product Usage Instructions

Power On and App Connection

1. Turn on the power switch.
2. Open the APP and connect according to the following steps:
3. Enter the WIFI password.
4. Scan the QR code with the camera, and enter the connection after hearing the sound of the camera prompt.
 - **(Note:** The QR code needs to be aimed at the camera below.)
5. Wait for the connection to complete and click “Done”.

App Interface Introduction

1. Quality adjustment: you can choose HD or SD.
2. Battery Remaining Capacity.
3. Voice switch.
4. Zoom in the screen for the camera.
5. Screen horizontal and vertical adjustment.
6. Take photo.
7. Bird recognition.
8. Shot videos.
9. Playback for previous.
10. View photos or videos taken.
11. Check out the bird collection.
12. Share the device.
13. Motion detection (Click to turn on/off).
14. Device Volume.
15. One-Way Talk.
16. Siren.
17. Notification for motion detection.

FAQ

Q: Can children and pets access the bird feeder?

- **A:** No, keep the bird feeder and all accessories out of reach of children and pets.

Q: How should I charge the camera for the first time?

- **A:** Make sure the camera has been fully charged for the first time.

Q: Can I expose the camera lens to direct sunlight?

- **A:** No, please do not expose the camera lens to sunlight directly.

Q: Can I soak the bird feeder in water?

- **A:** No, please do not soak the bird feeder in water.

Q: What type of WiFi should I use to connect the application?

- **A:** Please use 2.4 GHz WI-FI to connect the application.

Q: Should I stay away from strong light when pairing?

- **A:** Yes, please stay away from the strong light when pairing.

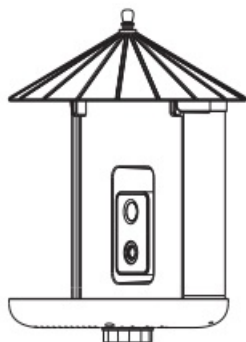
Q: What is the range of the WI-FI signal for the bird feeder?

- **A:** Please keep the bird feeder within the range of the WI-FI signal.

WARM TIPS

1. Keep the bird feeder and all accessories out of reach of children and pets.
2. Make sure the camera has been fully charged for the first time.
3. Please do not expose the camera lens to sunlight directly.
4. Please do not soak the bird feeder in water.
5. Please use 2.4 GHz WI-FI to connect the application.
6. Please stay away from the strong light when pairing.
7. Please keep the board feeder within the range of the WI-FI signal.

WHAT'S IN THE BOX



Bird feeder



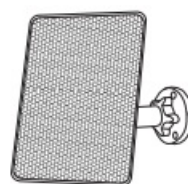
Drill Sticker



Bird feeder
bracket



Perch



External
solar panel



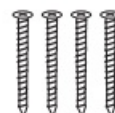
Bracket
connector



Screw*3



Green screws
spacers *4



Screw for
bracket *4



Pin



Waterproof
rubber



Screw for
perch*2

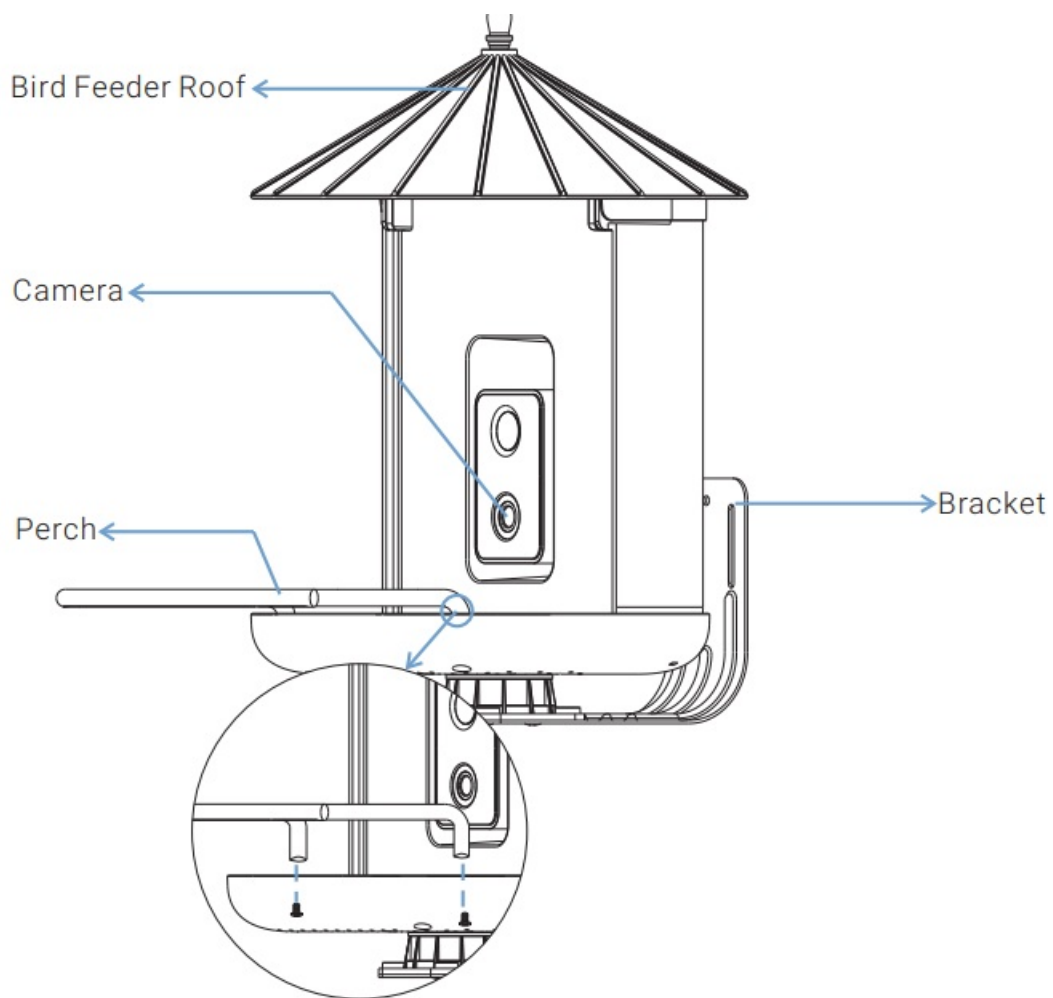


Charging cable

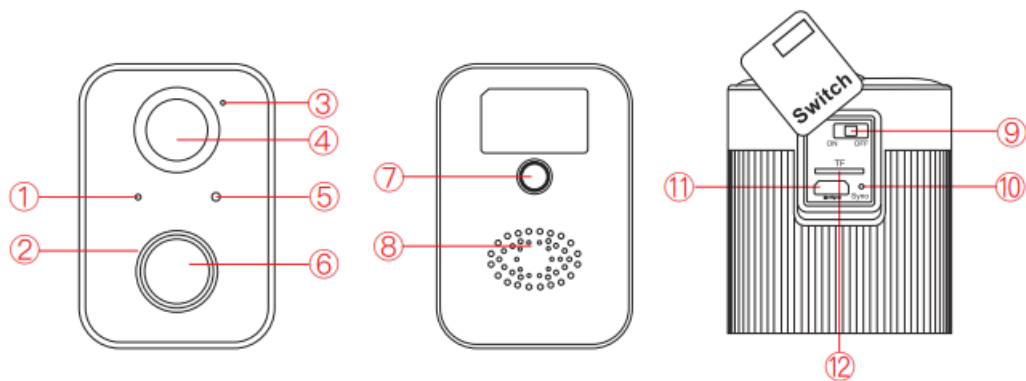
SPECIFICATIONS FOR BIRD FEEDER

Product Model	BF15
Charging	Solar panel and charging cable
Battery	5200 mAh Rechargeable Lithium-Ion Battery
Resolution	2.0MegaPixels Photos and 1080P HD Live Stream Video
Operating Temperature	-5°F to 120°F (-20.5°C to 48.5°C)
Wireless Type	WiFi 2.4GHz
Field of View	Diagonal: 130°, Horizontal: 94°, Vertical: 40°
Dimension	L9.05 * W9.13 *H13.03 inches (23 *23.2*33.1 cm)
Power Supply	DC 5V2A
Power Consumption	2W(Max.)
Battery Life	4-6 years
Night Visual Range	8m(Max)
Anti-flicker	50HZ /60HZ
SOLAR PANEL SPECIFICATION	
IPCE	19.5%
Working Voltage (Vmp)	6V±5%
Working Current (Imp)	500mA±5%
Length for DC Cable (m)	3
Dimension (mm)	L190*W116*H2.3

INTRODUCTION FOR BIRD FEEDER

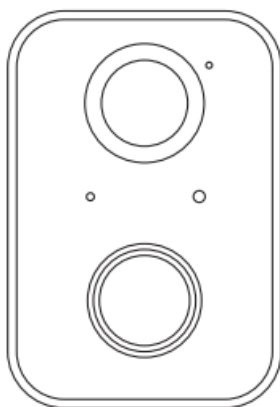


INTRODUCTION FOR CAMERA



1. Indicator Light
2. Infrared LED
3. Microphone
4. Motion sensor
5. Light sensor
6. Lens
7. Mounting hole
8. Speaker
9. Power ON/OFF
10. Sync/Reset
11. Charging port
12. TF card slot (Capacity expansion 128G)

INDICATOR LIGHT



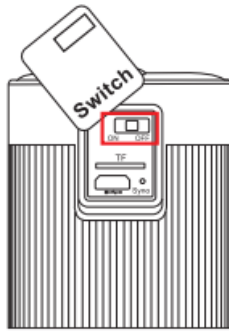
1. **Camera turn on:** Red light always ON.
2. **Pairing mode:** Red light fast blinking.
3. **Network connecting:** Green light fast blinking.
4. **Network connected:** Green light always ON.
5. **Abnormal status:** Red light slow blinking. (Need to reset)
6. During **firmware** update: Yellow light always ON.
7. **Charging status:** White light always ON during charging and OFF after fully charged.

HOW TO CONNECT TO THE APP

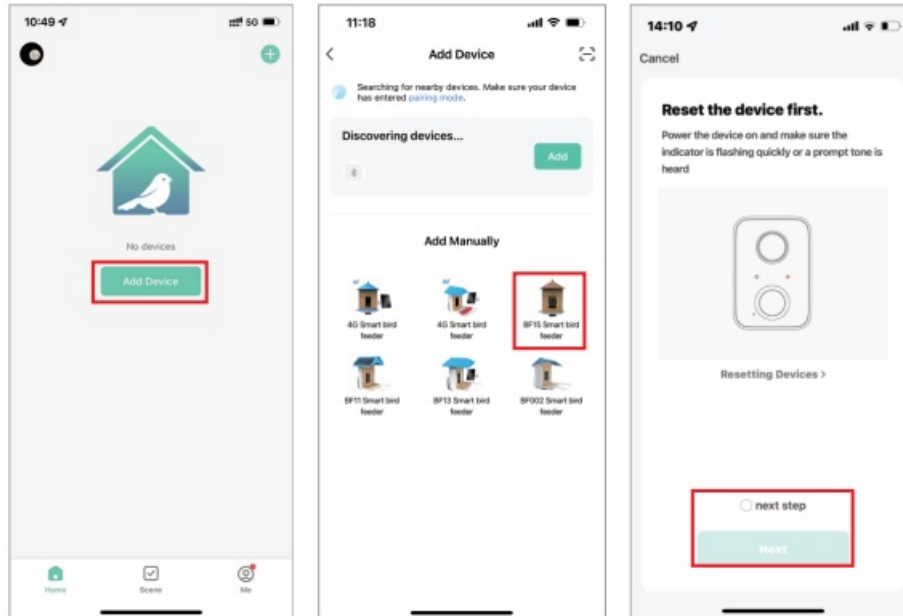


- Download or scan the QR code and install the Bird Lover App for either IOS or Android. Once downloaded, the APP will prompt you to register your device.
- Enter your phone number or email address which one makes you feel comfortable and select the country you live in. You will receive the registration code. Input the registration code, then create a password.

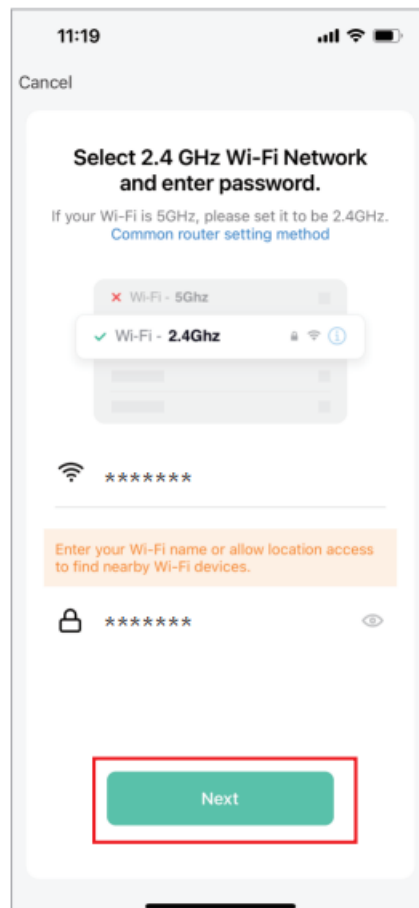
1. Turn on the power switch.



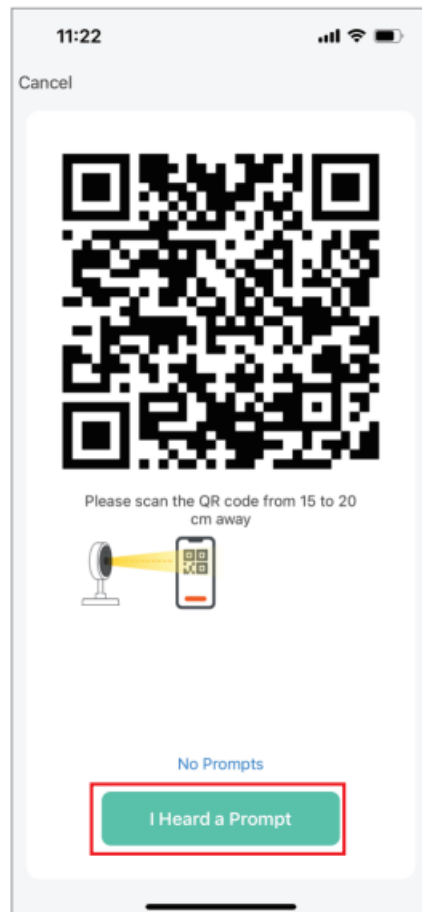
2. Open the APP and connect according to the following steps.



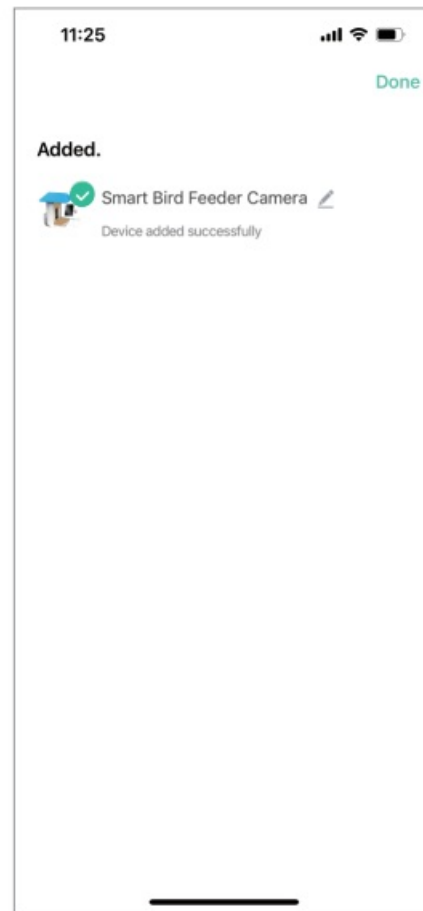
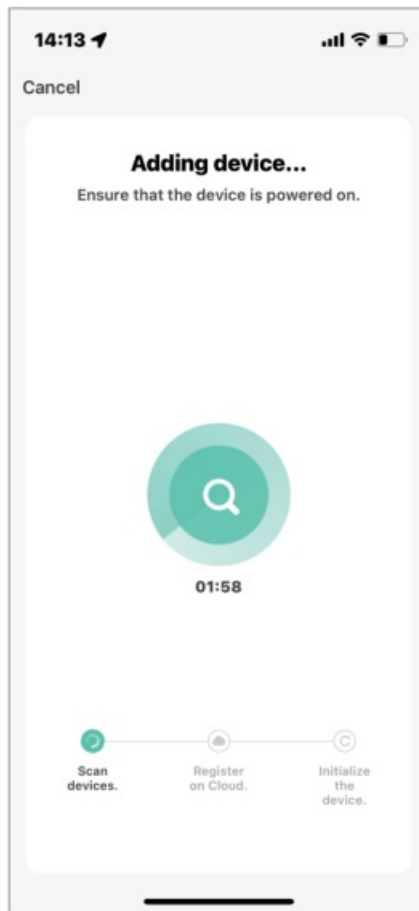
3. Enter the WIFI password.



4. Scan the QR code with the camera, and enter the connection after hearing the sound of the camera prompt.

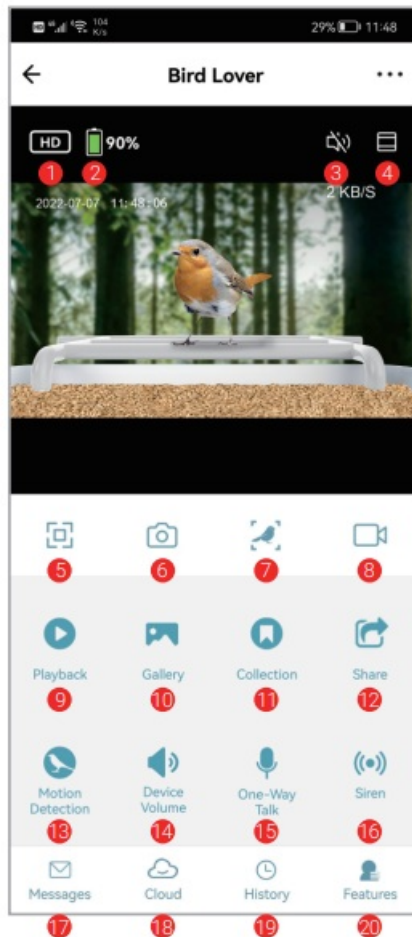


- **NOTE:** The QR code needs to be aimed at the camera below
5. Wait for the connection to complete, and click “Done.”



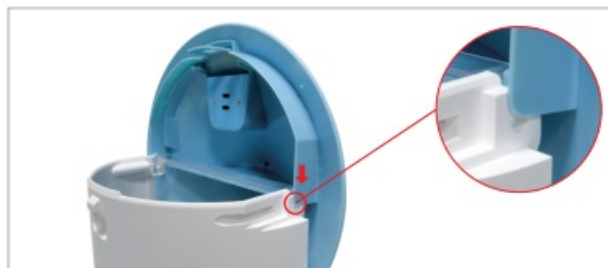
APP INTERFACE INTRODUCTION

1. **Quality adjustment:** you can choose HD or SD
2. Battery Remaining Capacity
3. Voice switch
4. Zoom in on the screen for the camera
5. Screen horizontal and vertical adjustment
6. Take a photo
7. Bird Recognition
8. Shot videos
9. Playback for previous
10. View photos or videos taken
11. Check out the bird collection
12. Share the device
13. Motion detection(Click to turn on/off)
14. Device Volume
15. One-Way Talk
16. Siren
17. Notification for motion detection
18. Cloud storage service
19. History of bird recognition
20. Back to all function interface



TOP COVER INSTALLATION

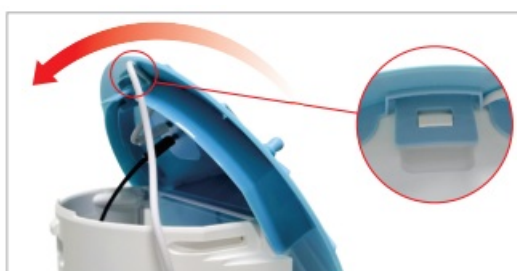
1. Align the top cover with the groove of the birdhouse and press down.



2. Connect the battery and solar panel charging cable.



3. Twist and snap the top cover (The solar charging cable runs through a small hole in the back of the top cover)



HOW TO INSTALL

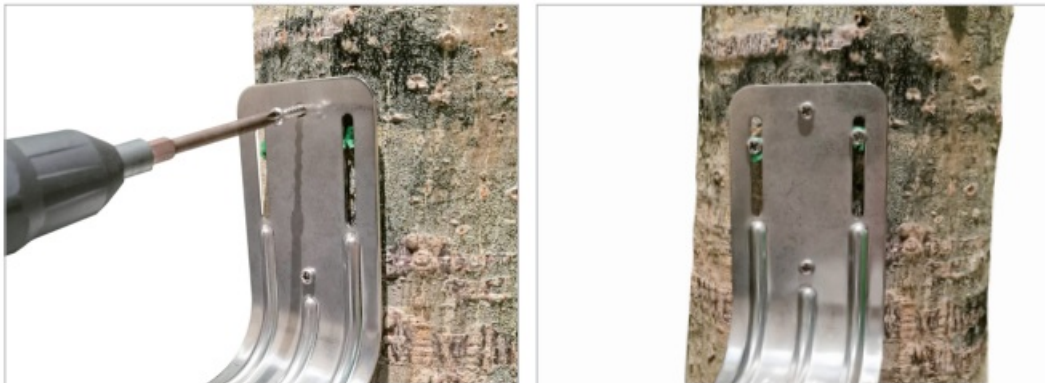
1. Stick the sticker on the tree or wall and drill holes within the range marked on the sticker.



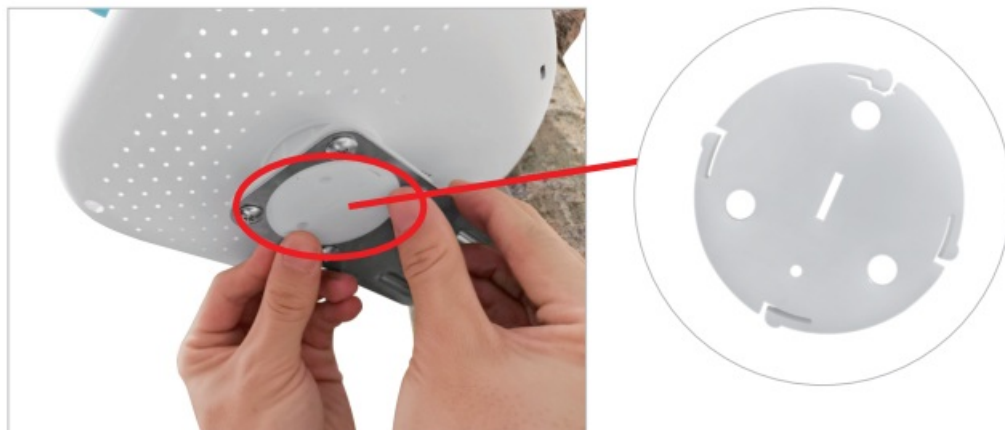
2. Insert the green plastic screw spacers into the hole.



3. Fix the bracket with long screws.



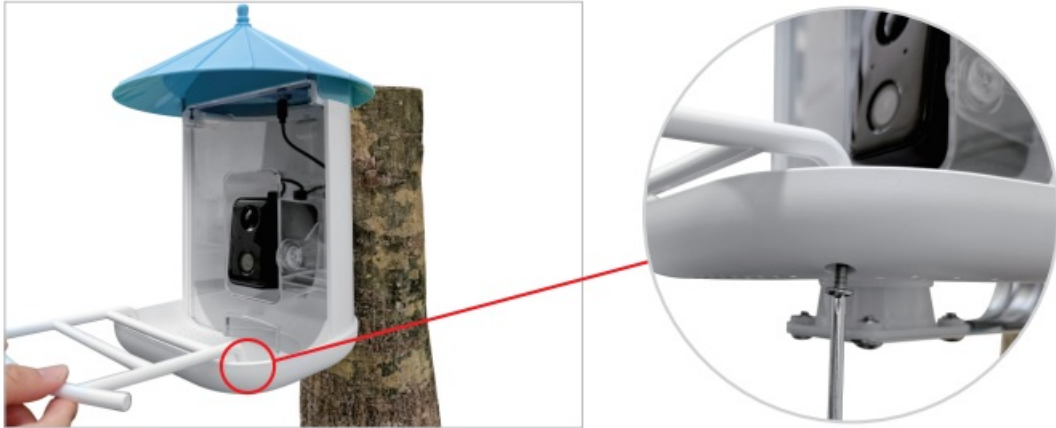
4. Install the bird feeder and align the three holes underneath.



5. Fix the bird feeder with three short screws.



6. Install the perch with the two screws in the package.



7. The birdhouse can rotate left and right.



HOW TO CHARGE THE CAMERA

1. Rotate the camera down.
2. Connect the solar charging cable.
3. Or remove the camera and charge it with the charging cable.



①




②



③

Documents / Resources

 <p>Smart AI Recognition Bird Feeder Product manual</p>	<p>Farmice BF15 Smart AI Recognition Bird Feeder Camera [pdf] Instruction Manual BF15 Smart AI Recognition Bird Feeder Camera, BF15, Smart AI Recognition Bird Feeder Camera, AI Recognition Bird Feeder Camera, Bird Feeder Camera, Feeder Camera, Camera</p>
--	--

References

- [User Manual](#)