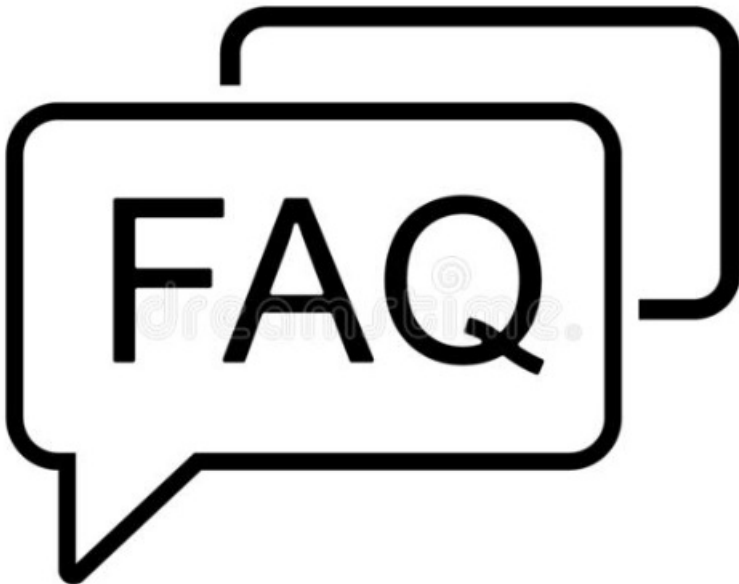


FAQs How does FiberCatcher Work User Manual

[Home](#) » [FAQs](#) » FAQs How does FiberCatcher Work User Manual 

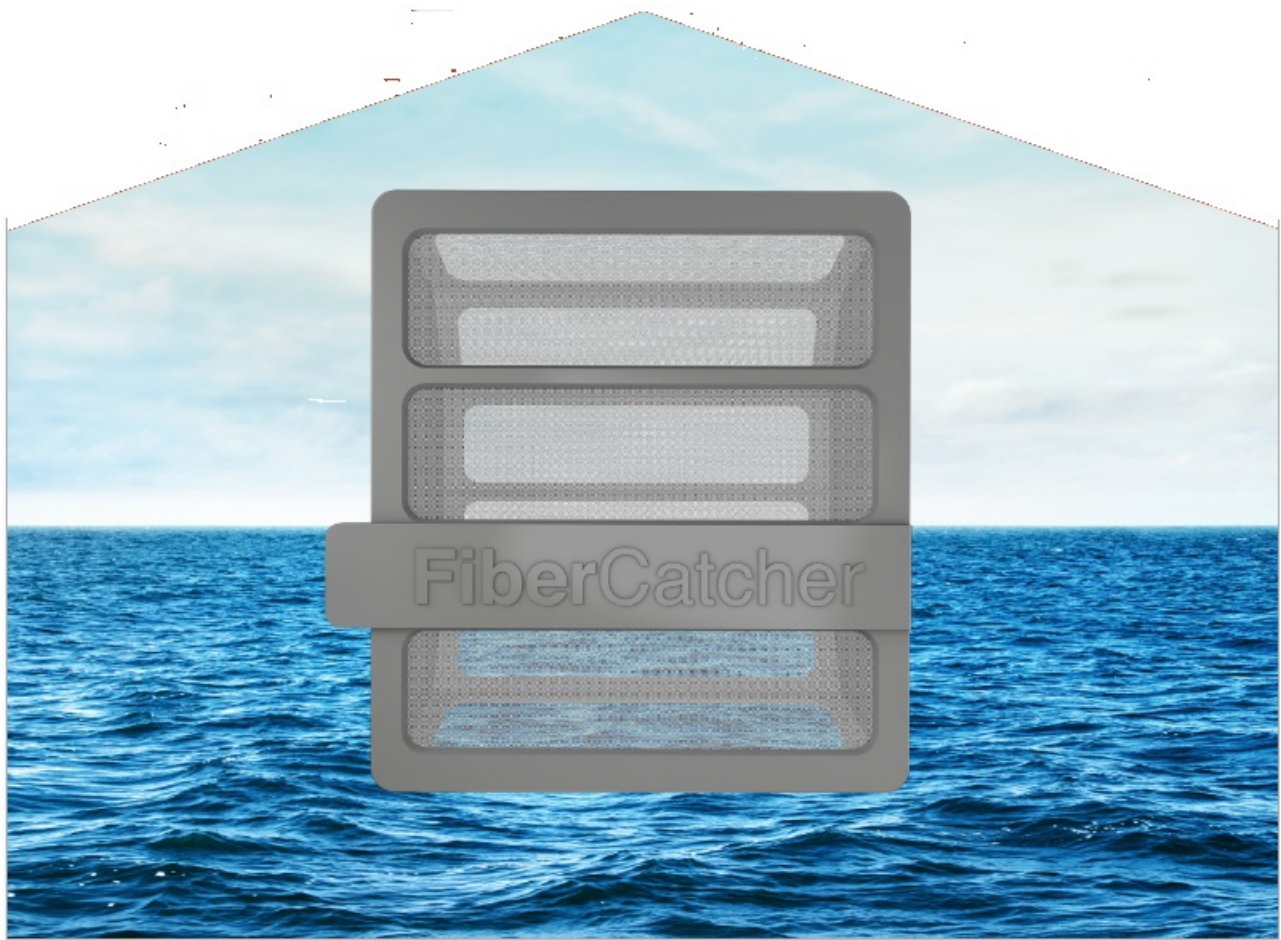


**World's 1st FiberCatcher™
Technology.
Protects our water sources.**

More than one-third of the microplastics in our waterways and oceans come from synthetic fibers released during wash cycles.

We have launched the World's 1st washing machine with FiberCatcher™ technology:

- ✓ Catches up to 90% of synthetic microfibres during wash cycles
- ✓ WaterCare® technology reduces drum movements, releasing fewer microfibres
- ✓ An A energy rating – highest available on a washing machine



GRUNDIG
It starts at home

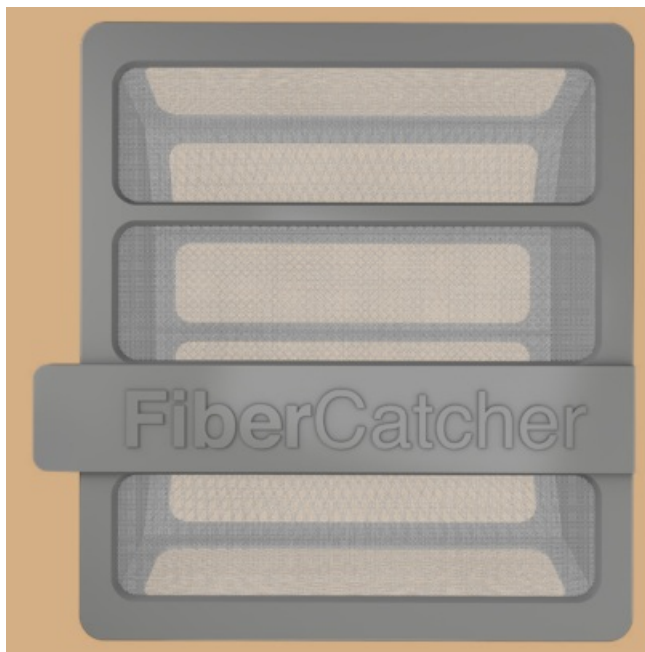


How does FiberCatcher™ work?

– Located in the detergent drawer of the washing machine, the FiberCatcher™ filter captures up to 90% of synthetic microfibres as the water passes through it. It is activated on the synthetic wash cycles shown below:



Once one of these programs is selected, the FiberCatcher™ LED will illuminate to show the filter is active



When and how do I buy a new FiberCatcher™ filter?

– The filter is designed to last up to 6 months*. Once the filter is full, the FiberCatcher™ LED will flash when one of the application

programs is selected. When this happens, it is time for a new filter. **

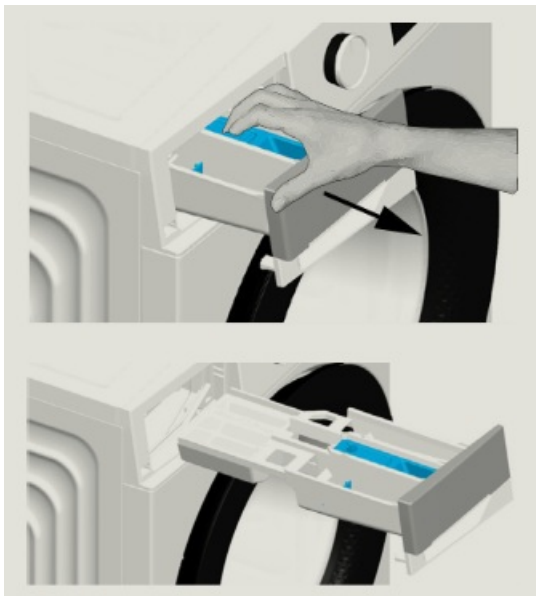
*Exact duration is dependent on usage

**Your washing machine will continue to work when the filter is full

– Purchase your replacement filter today from grundig.co.uk/fiber-catcher

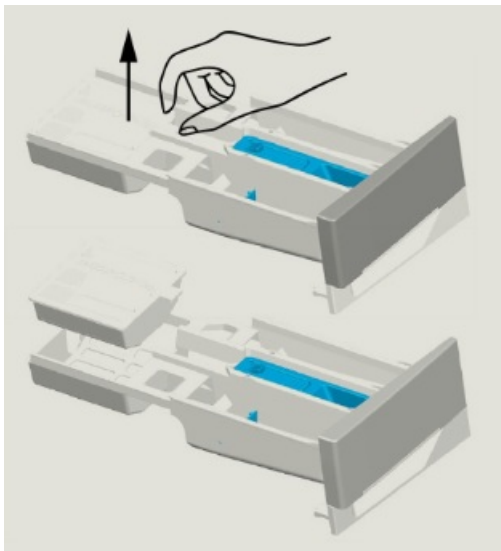
How do I replace my used FiberCatcher™ filter?

1.



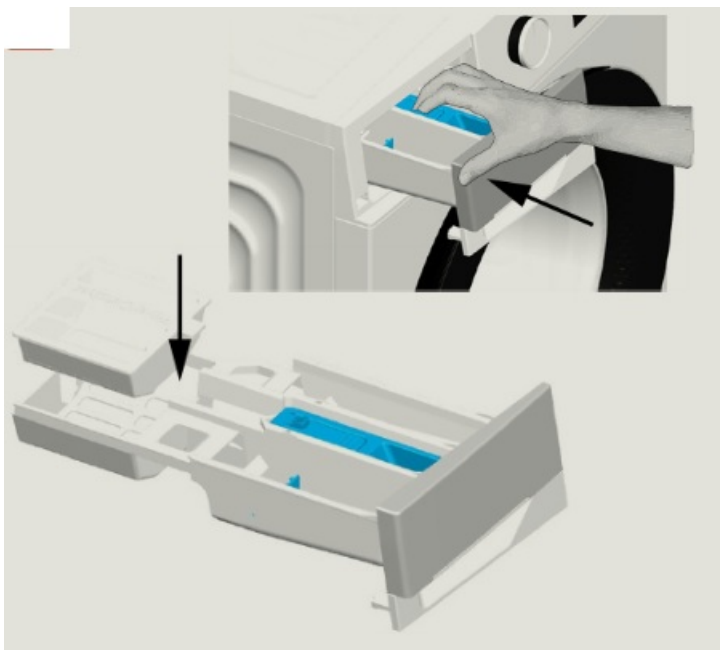
Press the button, then pull the drawer towards you to remove it.

2.



Lift out the FiberCatcher™ filter.

3.



Replace with a new filter and reinsert the drawer



4.

– Replace with a new filter and reinsert the drawer

Do not wash the used filter, please return it to us using the instructions in this leaflet.

How do I return my used FiberCatcher™ filter?

– The filter isn't suitable for household recycling, so please return it to us free of charge, to be recycled, in four easy steps:

- 1. Use the same box that your new filter was delivered in, which will include a returns label. If the label has been misplaced, if you are returning your first filter or if you are an
- 2.ROI resident, please email fibercatcher@grundig.com to request a new returns label.
- 3. Ensure the filter has had time to dry before sending it, otherwise, the box may become wet and damaged.
- 4. Attach the returns label to the outside of the box, covering any existing postage label.
- 5. Post the filter in a post box or at your nearest post office.

What happens to my FiberCatcher™ filter after it is returned?



– Filter returned to Grundig



– Filter sent to specialist recycling center



– Recycled plastic used to make new items

Filter returned to Grundig Filter sent to specialist recycling centre Recycled plastic used to make new items

We would love to hear what you think of your FiberCatcher™ washing machine, how you are using it, and the reasons why you purchased it. Please complete the short 3-minute survey by visiting the link below to receive your 2 free FiberCatcher™ filters worth £20 *! Grundig.UK/fiber-catcher-survey

**Get 2x FREE
FiberCatcher™
filters worth over *£20**

Contents

[1 Documents /
Resources](#)

[2 Related Posts](#)

Documents / Resources



[FAQs How does FiberCatcher Work](#) [pdf] User Manual

How does FiberCatcher Work