



Fanvil IP Scan Tool Instructions

[Home](#) » [Fanvil](#) » Fanvil IP Scan Tool Instructions 

Fanvil IP Scan Tool



Contents

- [1 Revise History](#)
- [2 Introduction](#)
 - [2.1 Overview](#)
 - [2.2 Applicable Model](#)
 - [2.3 Target Audience](#)
- [3 Instructions for use](#)
 - [3.1 Scan](#)
 - [3.2 Change Parameter](#)
 - [3.3 Set Language](#)
- [4 Documents / Resources](#)
 - [4.1 References](#)
- [5 Related Posts](#)

Revise History

Revise History:

Version	Author	Release Time	Description
1.0		2020.9.4	Initial Version

Introduction

Overview

Products without screens are not very convenient to deploy and use. Fanvil IP scanning tool is convenient to obtain device information and modify network parameters. This document mainly introduces the use of IP scanning tools.

Applicable Model

This document applies to Fanvil i12, i16V, i18S, i20S, i23S, i30, i31S, i32V, i33V/i33VF, PA2, etc.

Target Audience

This document is for people using IP scanning tools.

Instructions for use

Scan

Open the scan tool and click the scan button on the right to scan the azimuth devices in the local area network.

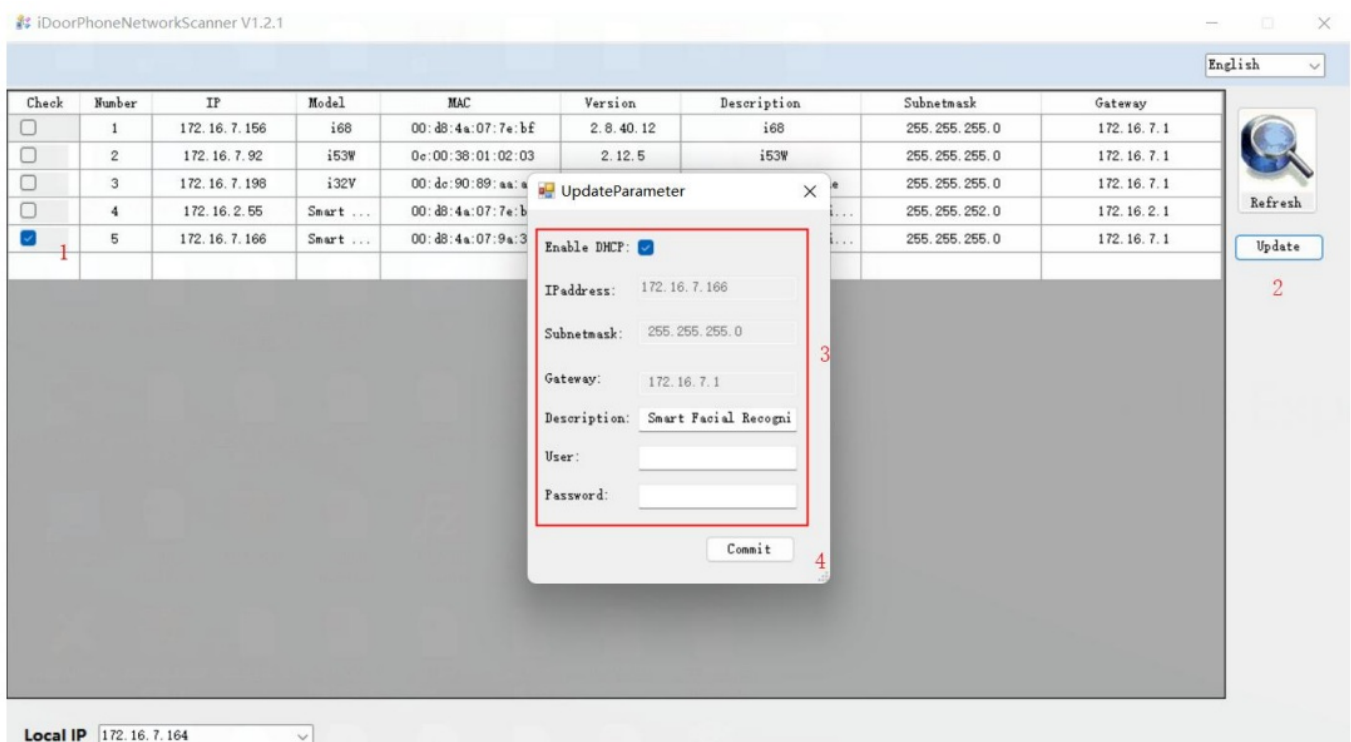


Change Parameter

IP scanning tool supports modifying device IP address and device description information

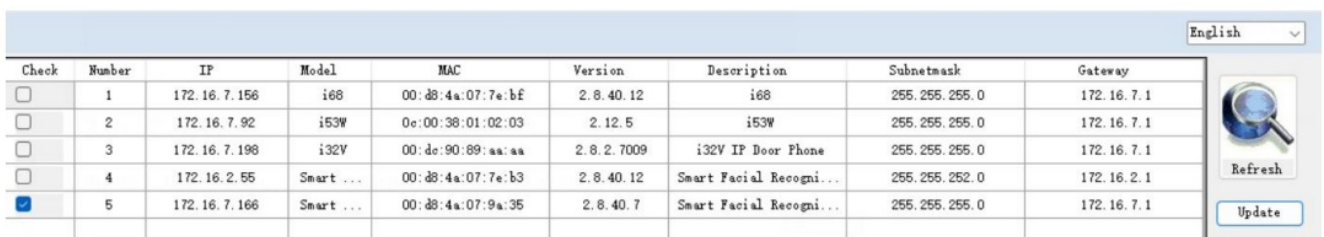
1. Select the device to be modified
2. Click the Modify Parameters button on the right
3. You can see the information as shown in the figure below. If the device uses DHCP, DHCP is checked, and the IP address cannot be modified at this time; when the DHCPcheck is removed, the device network can be modified to a static IP. Support modifying IP address, subnet mask, gateway; after setting the information to be modified, you need to enter the user name and password of the device (administrator user name and password)
4. After the modification is completed, click Submit, wait for the prompt to modify the

parameters successfully, and you can see the setting information in the scan list.



Set Language


The IP scanning tool supports setting the language, you can choose Chinese or English, as shown in the following figure.



It takes effect immediately after setting.



Documents / Resources

	Fanvil IP Scan Tool [pdf] Instructions IP Scan Tool, Scan Tool, IP Scan, Tool
---	--

References

-  [Fanvil Technology Co., Ltd](#)