



## Fanvil i16SV-02P SIP Intercom Installation Guide

[Home](#) » [Fanvil](#) » Fanvil i16SV-02P SIP Intercom Installation Guide 







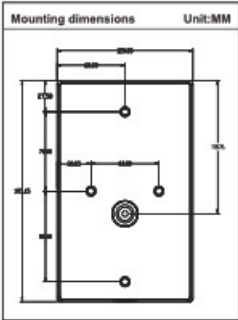


[www.fanvil.com](http://www.fanvil.com)

## Contents

- 1 Package Contents
- 2 Physical specification
- 3 Installation Diagram
- 4 Searching device
- 5 Fast settings
- 6 Documents / Resources
  - 6.1 References

## Package Contents

|   |                          |
|---|--------------------------|
|     | SIP Intercom             |
|    | Quick Installation Guide |
|    | Screw and tool           |
|   | Connector                |
|  | Mounting Template        |

Physical specification

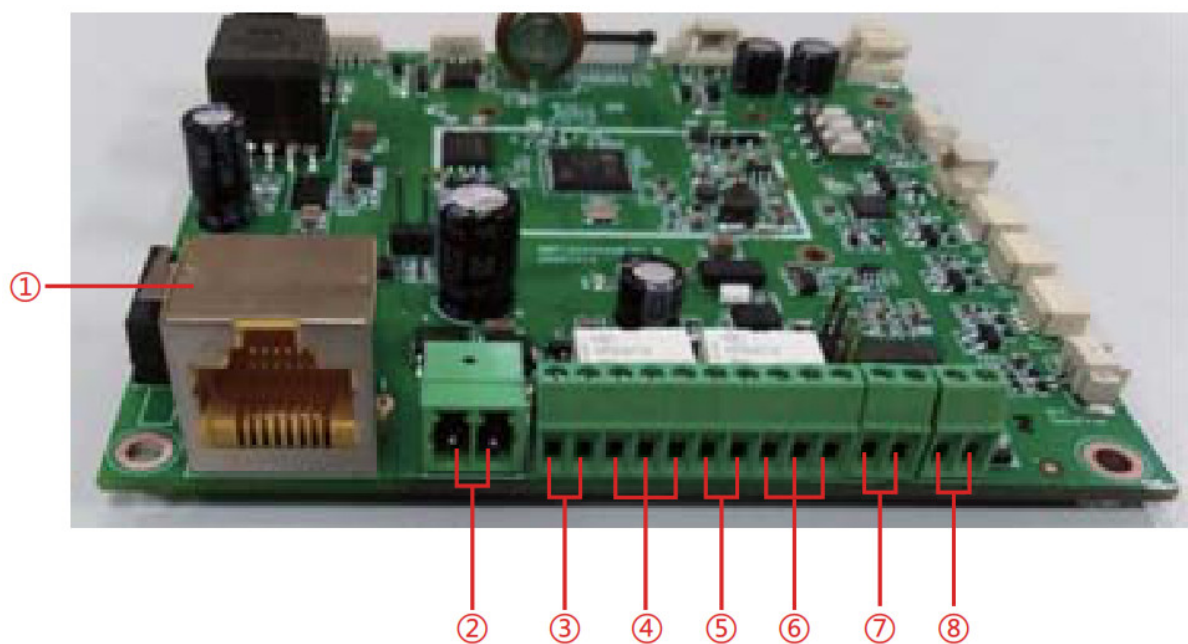
|             |                     |
|-------------|---------------------|
| Device Size | 195 x 120 x 40 (mm) |
|-------------|---------------------|

1. Panel



## 2. Interface description

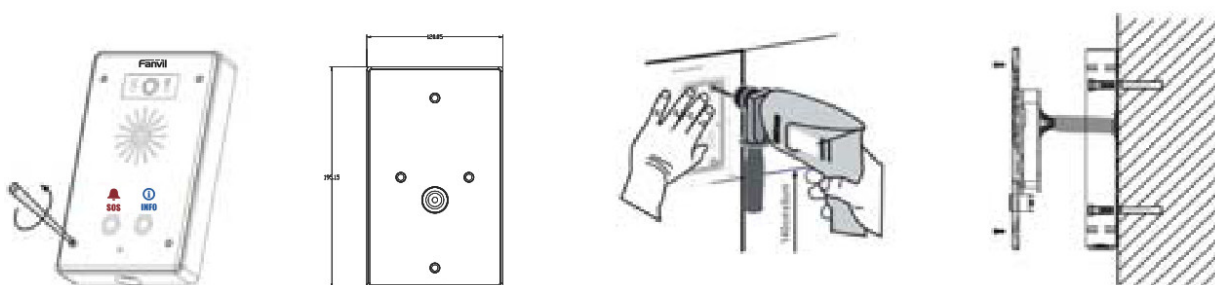
Open the rear case of the device, there is a row of terminal blocks for connecting the power supply, electric lock control, etc. The connection is as follows:



| Serial number | Description   | Wiring port description(example above)   |
|---------------|---|--|
| ①             | Ethernet interface: standard RJ45 interface, 10/100M adaptive, it is recommended to use five or five types of network cable   |  |
| ②             | Power interface: 12V/1A input   | Left positive, right grounded  |
| ③, ⑤          | Two groups of short-circuit input detection interfaces: for connecting switches, infrared probes, door magnets, vibration sensors and other input devices   | Left IN, right OUT   |
| ④, ⑥          | Two groups of short-circuit output control interface: used to control electric locks, alarms, etc.  | Left (NC): Normally Close Contact<br>Center (COM): Common Contact<br>Right (NO): Normally Open Contact |
| ⑦             | Recording output interface: Mix the device and the sound of the far-end call. One is the recording signal line, and the other is the ground line (be sure to ground the line, otherwise there will be noise)          | Left grounded, right recording output  |
| ⑧             | External active speaker interface: external active speakers for audio power amplification. One is the audio signal line, and the other is the ground line (be sure to ground the line, otherwise there will be noise) | Left grounded, right external active speaker   |

## Installation Diagram

1. Use built-in screw tool to remove the surface shell;
2. Based installation dimensions, mounting hole in the wall to draw, use an electric drill holes lay;
3. The white rubber plugged into the wall and the bottom fixed with screws to the wall;
4. After connecting the power cord and network cable, screw the surface shell fixed.

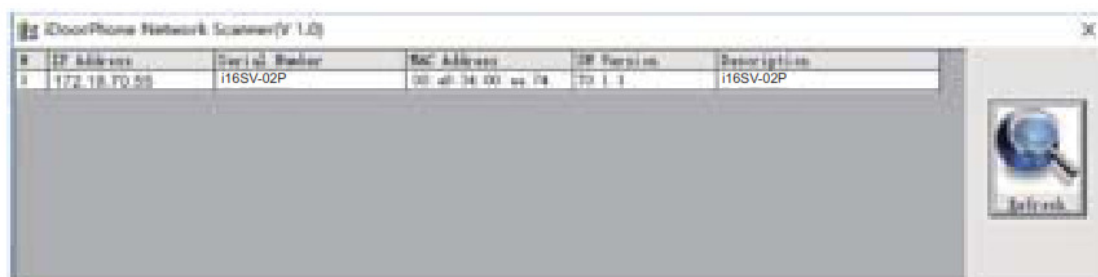


## Searching device

There as shown below to search the device.

### Methods 1:

Open the iDoorPhone Network Scanner. Press the Refresh button to search the device and find the IP address.



## Method 2:

Long press DSS key for 3 seconds(after power-on for 30 seconds), and when the speaker beeps rapidly, press DSS key again quickly, the beeps stop ,the intercom will report the IP address by itself.

## Method 3:

In addition, device provides the device surface DSS key operation to switch IP address acquisition mode: In the standby mode, long-press the DSS key for 3 seconds and the beep will last for 5 seconds. Within 5 seconds, press the DSS key three times quickly to switch to the network mode.

- If it is in the mode of DHCP and doesn't receive the IP address, switch it to the mode of static IP (192.168.1.128), broadcast the IP address after the successful switch.
- If it is in the mode of static IP address (192.168.1.128), switch it to the DHCP mode, broadcast the IP address after the successful switch.
- If it is in the mode of DHCP and obtain the IP address, the mode will not be switched and directly broadcast the IP.

## Default Setting

|                            |   |                   |               |
|----------------------------|---|-------------------|---------------|
| Default DHCP Client        | Enabled by default  | Static IP address | 192.168.1.128 |
| Voice broadcast IP address | Hold the DSS key for 3 seconds, then press the DSS key again. | Default Web port  | 80            |

## Fast settings

### Step 1:Log in to the device page

Use the web browser input IP (for example: **http://192.168.1.128**) access.

The default user and password are admin.

A login form with a red header bar. It contains three input fields: 'User' with the text 'admin', 'Password' with masked characters '\*\*\*\*\*', and 'Language' with a dropdown menu showing 'English'. Below these fields is a 'Logon' button.

### Step 2: Set SIP account

Set SIP server address, port, user name, password and SIP user with assigned SIP account parameters. Select "Activate", and then click [Apply] to save this setting.

A screenshot of a SIP settings configuration page. The page has a red sidebar on the left with a 'SIP' tab selected. The main content area has three tabs: 'SIP', 'SIP Network', and 'Basic Settings'. The 'SIP' tab is active, showing fields for 'SIP User', 'SIP Password', 'SIP Server Address', 'SIP Server Port', 'SIP Transport Protocol', 'SIP Registration Expiration', 'SIP Proxy Server Address', 'SIP Proxy Server Port', and 'SIP Proxy User'. There are also fields for 'SIP Network' and 'SIP Network Port'. The 'SIP' tab is currently selected, showing the 'SIP User' field with the value 'admin' and the 'SIP Password' field with masked characters. The 'SIP Server Address' field is set to '192.168.1.100' and the 'SIP Server Port' is set to '5060'. The 'SIP Transport Protocol' is set to 'UDP'. The 'SIP Registration Expiration' is set to '3600' seconds. The 'SIP Proxy Server Address' is set to '192.168.1.100' and the 'SIP Proxy Server Port' is set to '5060'. The 'SIP Proxy User' is set to 'admin'. The 'SIP Network' tab is also visible, showing fields for 'SIP Network' and 'SIP Network Port'.

### Step 3: Set the volume (if not connected can skip)

Intercom settings => Media Settings => Media Settings

Set the device volume size, as shown below, click [Apply].

Speakerphone volume setting: set the speaker volume of normal calls.

Handsfree Mic Gain: set the microphone volume of call.



#### Step 4: Set function key (if not connected can skip)

Set the function key as shown below for a quick start, click [Apply] to save this settings.

Type: Memory key

Number 1 (Value): the function key will dial to this number 1

Number 2 (Value 2): if number 1 is unavailable, it will be forwarded to number 2.

Subtype: speed dial

Line: working line



#### Step 5: Set the security function

1 set of short-circuit input and output settings, tamper alarm server settings.



