

**FANTECH**  
WK898 Multi Device  
Wireless Combo



# FANTECH WK898 Multi Device Wireless Combo User Guide

[Home](#) » [fantech](#) » FANTECH WK898 Multi Device Wireless Combo User Guide 

## Contents

- [1 FANTECH WK898 Multi-Device Wireless Combo](#)
- [2 TECHNICAL SPECIFICATION](#)
- [3 SIZE](#)
- [4 PRODUCT YOUR](#)
- [5 FUNCTIONS KEYS](#)
- [6 HOW TO CONNECT](#)
  - [6.1 BT CONNECTION](#)
- [7 LED INDICATOR](#)
- [8 Documents / Resources](#)
  - [8.1 References](#)
- [9 Related Posts](#)

# FANTECH

## FANTECH WK898 Multi-Device Wireless Combo



## TECHNICAL SPECIFICATION

- **KEYBOARD**

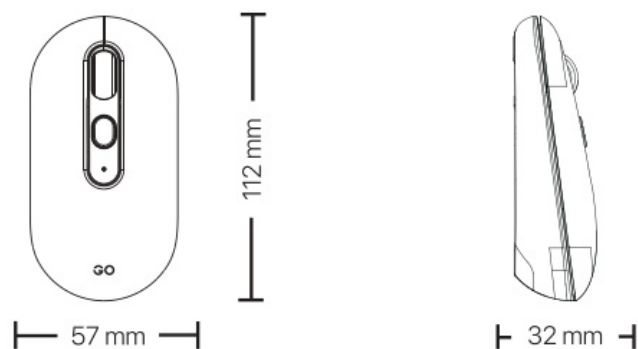
- **Number of Keys:** 85 Keys
- **Connectivity:** BT, 2.4GHz
- **BT Version:** 3.0 & 5.0
- **Switch Type:** Membrane
- **Battery Type:** 2 AAA Battery
- **Size:** 351\*135\*29 mm
- **Weight:** 361 ± 5 g
- **Compatibility:** Windows 7 or later, Mac
- **OS** 10.11 or later, Android
- **Power Rating:** 3V === 8mA

- **MOUSE**

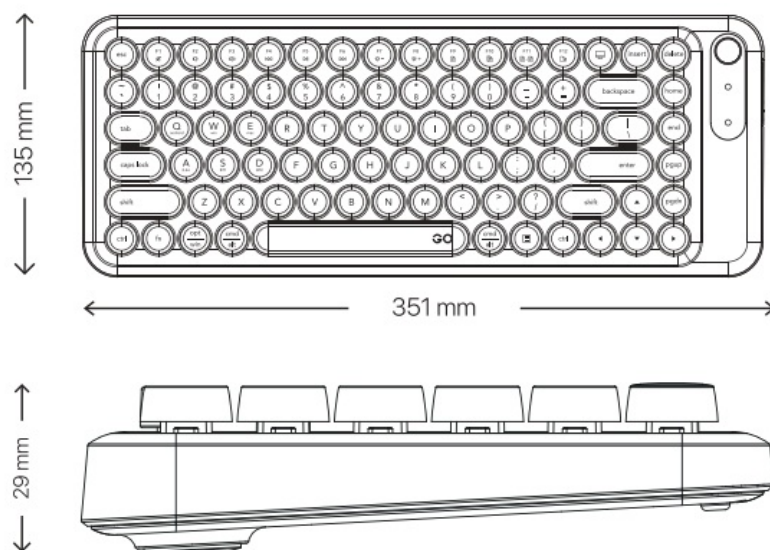
- **Switch Lifetime:** 1 Million Clicks
- **Connectivity:** BT, 2.4GHz
- **BT Version:** 3.0 & 5.0
- **DPI:** Up to 1600 DPI
- **Number of Buttons:** 5
- **Battery Type:** 1 AA Battery
- **Polling Rate:** 125 Hz
- **Size:** 112\*57\*32 mm
- **Weight:** 57 ± 5 g
- **Compatibility:** Windows 7 or later, Mac OS 10.11 or later, Android
- **Power Rating :** 1.5V === 15 mA

## **SIZE**

## MOUSE

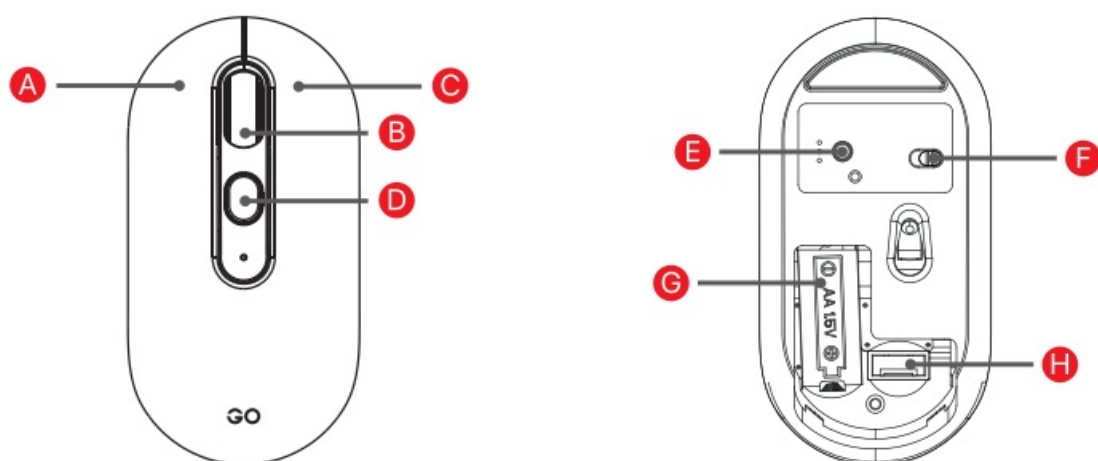


## KEYBOARD



## PRODUCT YOUR

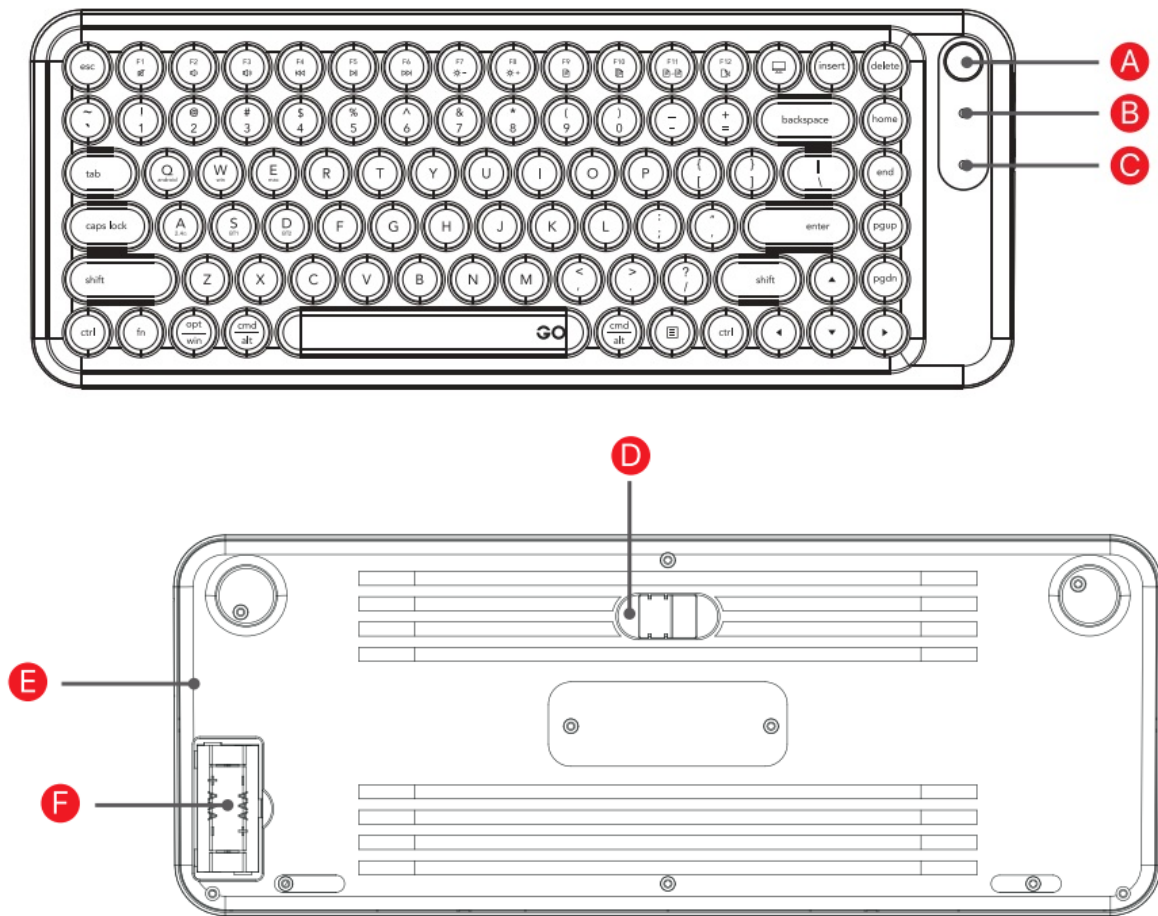
### MOUSE



- A Left Button
- B Middle Button/Scroll Wheel
- C Right Button
- D DPI Button
- E Connection Switch
- F Power ON/OFF Switch

- G Battery Storage
- H Dongle Slot

## KEYBOARD



- A Rotary Encoder
- B Caps Lock LED Indicator
- C Battery LED Indicator
- D Dongle Slot
- E Power ON/OFF Switch
- F Battery Storage

## FUNCTIONS KEYS

## MULTIMEDIA FUNCTION



## SYSTEM SWITCH

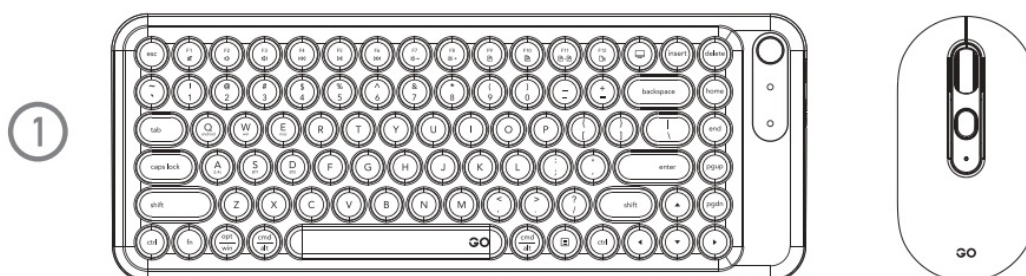


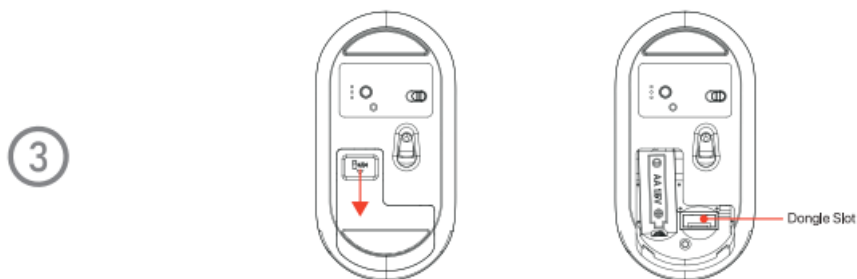
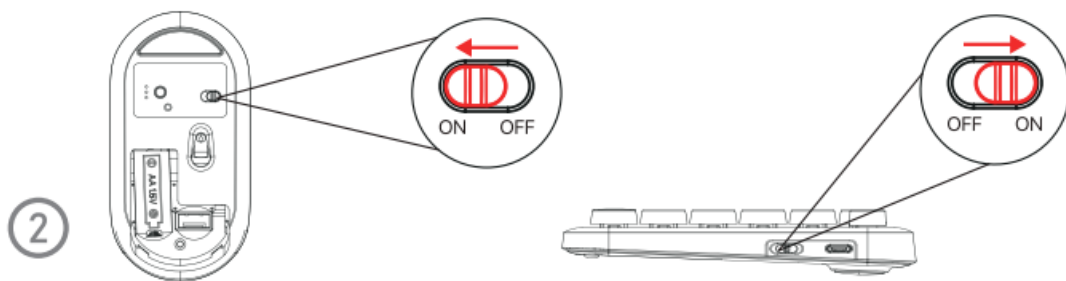
## CONNECTION SWITCH



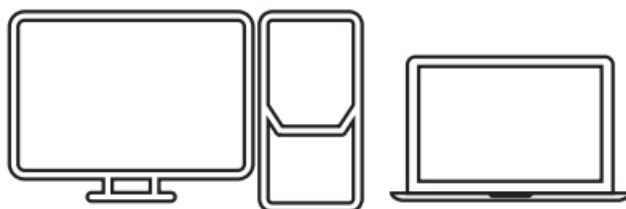
## HOW TO CONNECT

### 2.4 Hz CONNECTION



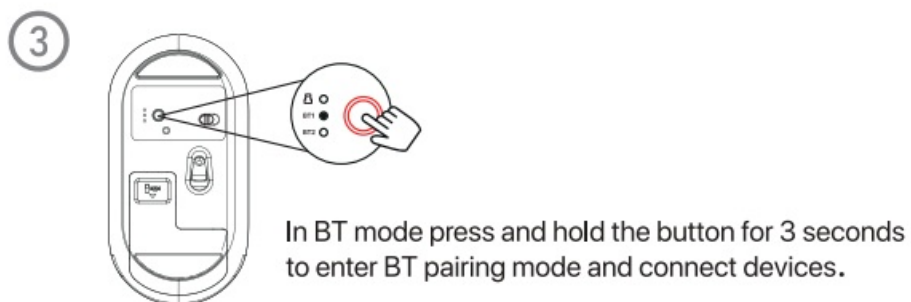
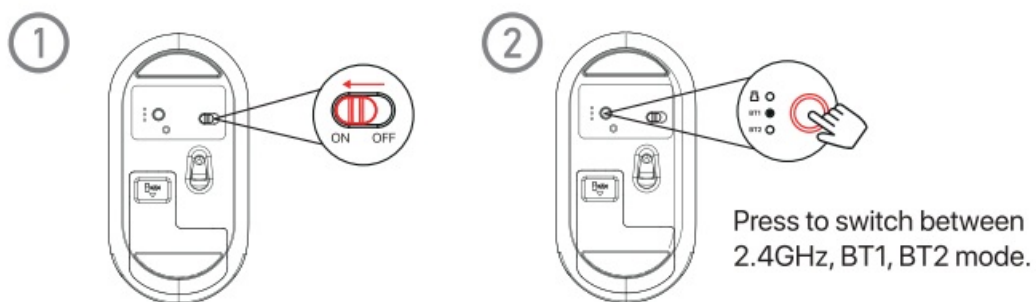


Plug in the USB receiver for instant keyboard and mouse connectivity.

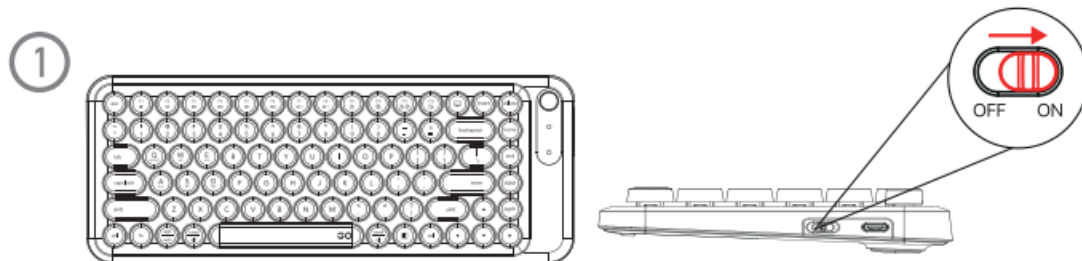


## BT CONNECTION

### MOUSE



### KEYBOARD

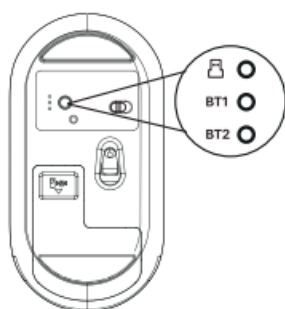


**GO MOCHI85**



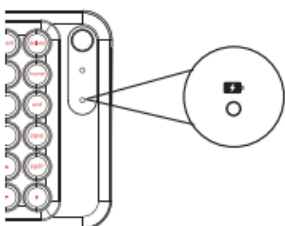
## LED INDICATOR

### MOUSE



2.4GHz Pairing/Disconnected:		Red light flashes
Successful 2.4GHz Pairing:		Solid red light
BT1 Pairing/Disconnected:		Green light flashes
Successful BT1 Pairing:		Solid green light
BT2 Pairing/Disconnected:		Blue light flashes
Successful BT2 Pairing:		Solid blue light

### KEYBOARD



Full Battery / No Battery:		LED off
Low Battery:		White light flashes

## Documents / Resources



**[FANTECH WK898 Multi Device Wireless Combo](#)** [pdf] User Guide  
WK898, WK898 Multi Device Wireless Combo, Multi Device Wireless Combo, Device Wireless Combo, Wireless Combo, Combo

References

- [User Manual](#)

[Manuals+](#), [Privacy Policy](#)

This website is an independent publication and is neither affiliated with nor endorsed by any of the trademark owners. The "Bluetooth®" word mark and logos are registered trademarks owned by Bluetooth SIG, Inc. The "Wi-Fi®" word mark and logos are registered trademarks owned by the Wi-Fi Alliance. Any use of these marks on this website does not imply any affiliation with or endorsement.