



fantech QB-X8US3-6G Hard Drive Array Installation Guide

[Home](#) » [fantech](#) » **fantech QB-X8US3-6G Hard Drive Array Installation Guide** 



FANTEC QB-X8US3-6G
8×3,5" SATA HDD USB3.0 eSATA
Quick Installation Guide
Version 1.0

Contents

- [1 STEP 1 Note](#)
- [2 STEP 2 Reminders](#)
- [3 STEP 3 Front Panel Overview](#)
- [4 STEP 4 Rear Panel Overview](#)
- [5 STEP 5 Quick Installation Guide](#)
- [6 STEP 6 Initialization](#)
- [7 STEP 7 Trouble Shooting](#)
- [8 Documents / Resources](#)
 - [8.1 References](#)

STEP 1 Note

Operation System

Windows Vista / 7 / 8 / 8.1 (32/64bit),
Macintosh OS X 10.5 or later, Linux

Operation Environment

Temperature 0 ~ 50 °C Humidity 90 % RH

References

1. Smart fan controlled by the built-in thermal sensor and it comes with 2 modes (auto/ manual) and 3 levels of speed:

Level 1: higher than 55 °C	2,500rpm ~ 3,500rpm
Level 2: 45 °C ~ 54 °C	1,800rpm ~2,500rpm
Level 3: below 45 °C	1,200rpm ~1,800rpm

2. eSATA transfer data up to 6.0 Gbps
USB 3.0 transfer data up to 5.0 Gbps
USB 1.1 / 2.0 / 3.0 compatible
3. Interface of USB / eSATA can not be used at the same time.
4. Under Windows Vista / 7, users can enable GPT when initializing HDD with a total capacity of more than 2TB.
5. Via eSATA port a controller with port multiplier (PM) is required.

STEP 2 Reminders

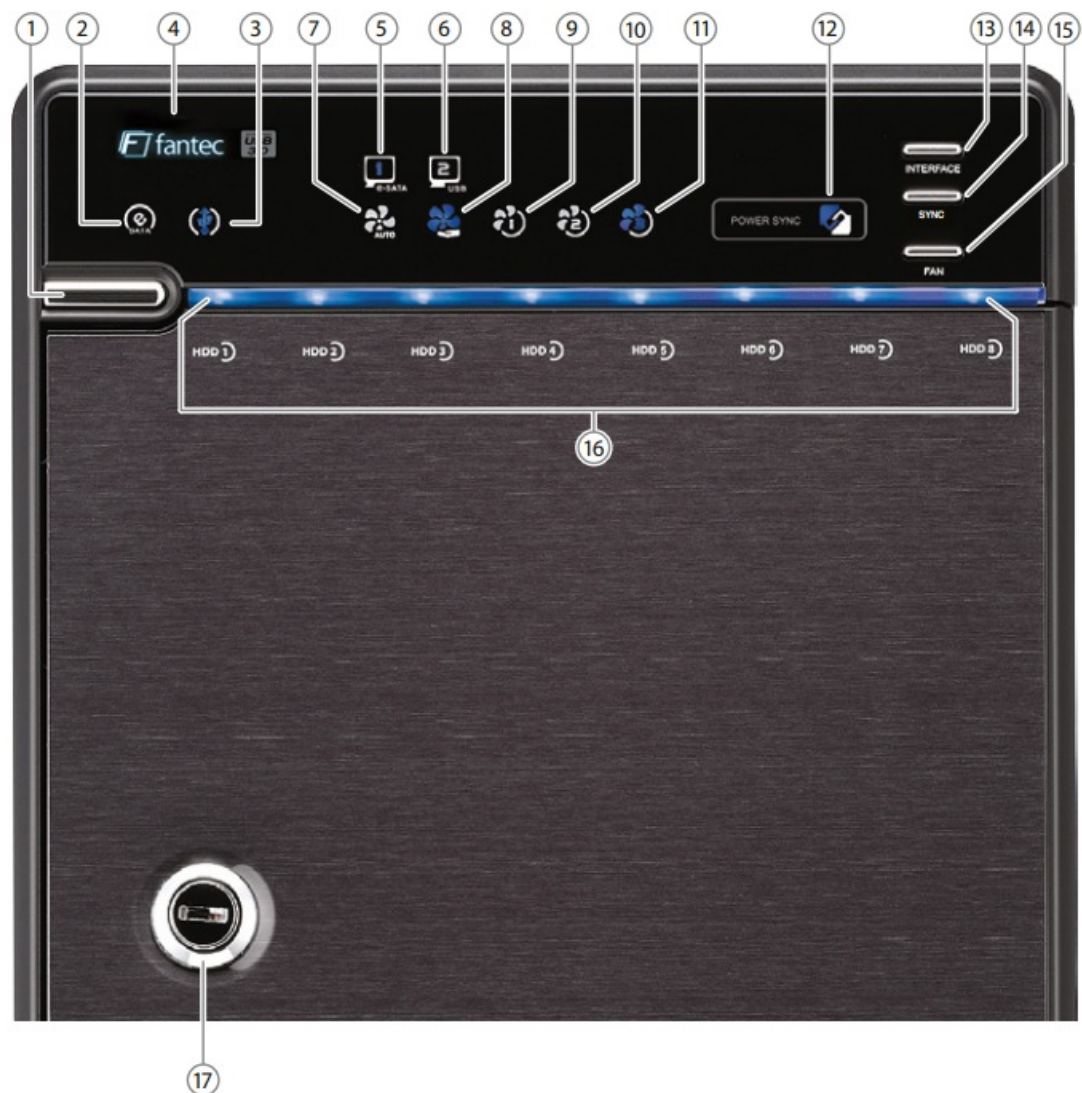
1. USB port of your PC must support power-off function so that the device would go to sleeping mode. Setting up motherboard's (power management) in S3 is strongly recommended. For more details, please refer to user guide of motherboard BIOS setting.
2. Smart fan controlled by the built-in thermal sensor and it comes with 2 modes (auto / manual) and 3 levels of speed ☐

Low	below	45°C	1200rpm
Medium	between	45°C~55°C	1800rpm
High	hotter than	55°C	2500rpm

3. Maximum HDD capacity: 6TB each HDD (status: October 2014), 8 single hard drives are displayed at PC (JBOD)
4. • Follow all instructions.
 - Do not place this device near water.
 - Clean only with dry cloth.
 - Do not block any ventilation openings.
 - Only use attachments/accessories.
 - Do not drop or shake the device.
 - Do not move the device when it is powered on.

STEP 3 Front Panel Overview

LED Indication / Button



1. It needs to be pressed and held for 3 seconds to power off.
Power button
- ❗ This design prevents accidental power off.
2. eSATA Link interface use
3. USB Link interface use
4. Blue Power on
Orange Sleep mode
5. eSATA Link interface option.
6. USB Link interface option USB.
7. Smart Fan automatic mode.
8. Smart Fan manual mode.
9. Fan speed level 1.
10. Fan speed level 2.
11. Fan speed level 3.
12. Synchronization comes in 3 modes:
Blue When the PC is off, the device goes off In 15 seconds.
Orange When the PC is off, the device goes to sleep mode.
Off Synchronization is off.
13. Interface button

14. Synchronization mode button

It needs to be pressed and held for 3 seconds to power off.

❗ This design prevents accidental power off.

15. Smart fan button : auto, manual and fan speed from level 1 to level 3

HDD1 / HDD2 / HDD3 / HDD4 / HDD5 / HDD6 / HDD7 / HDD8

Blue active

Purple access

16. Key slot

STEP 4 Rear Panel Overview

Rear Panel



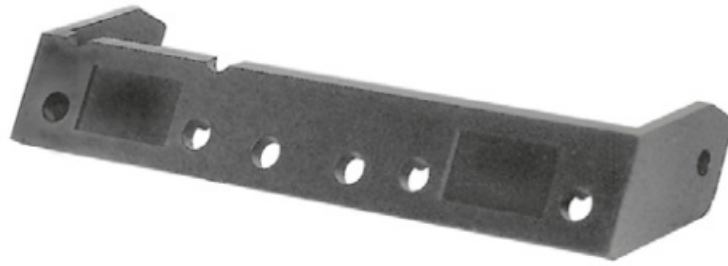
Descriptions

1. Fan

2. eSATA port

3. USB 3.0 / USB 2.0 port
4. AC Input port

HDD Handle

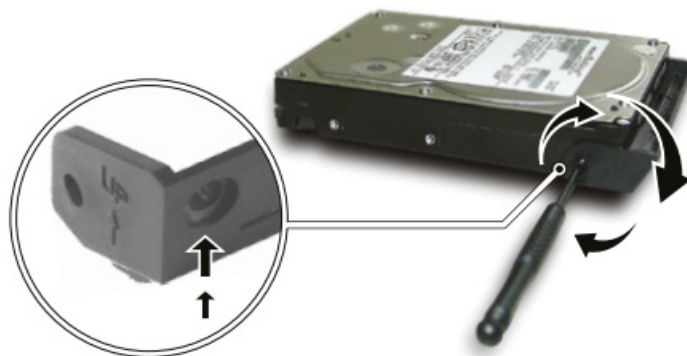


Keys



STEP 5 Quick Installation Guide

1. Please use screws to secure the handles to the HDDs.



2. Unlock the cover with the key supplied and press onto the lock to open the cover.



3. Open the inner covers.



4. Install the HDDs from up to down.



5. Close and secure the covers.

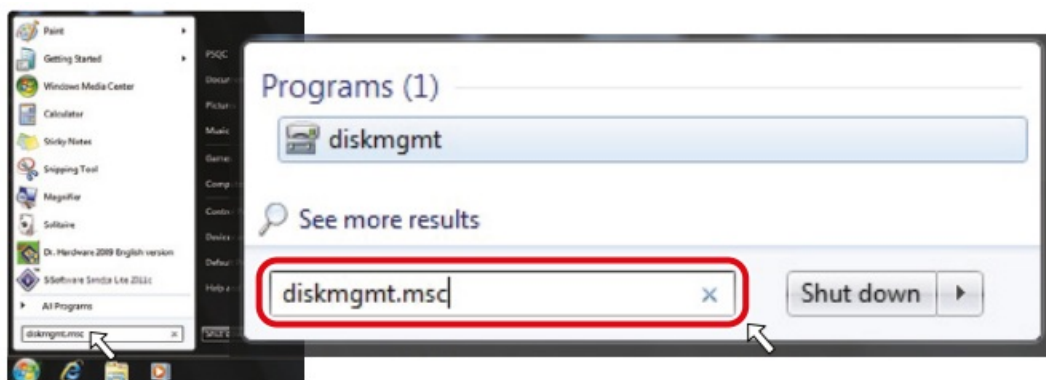
6. Plug in USB or eSATA cable

! USB interface is the default setting and if users wish to change to eSATA, press and hold “Interface” for 3 seconds.

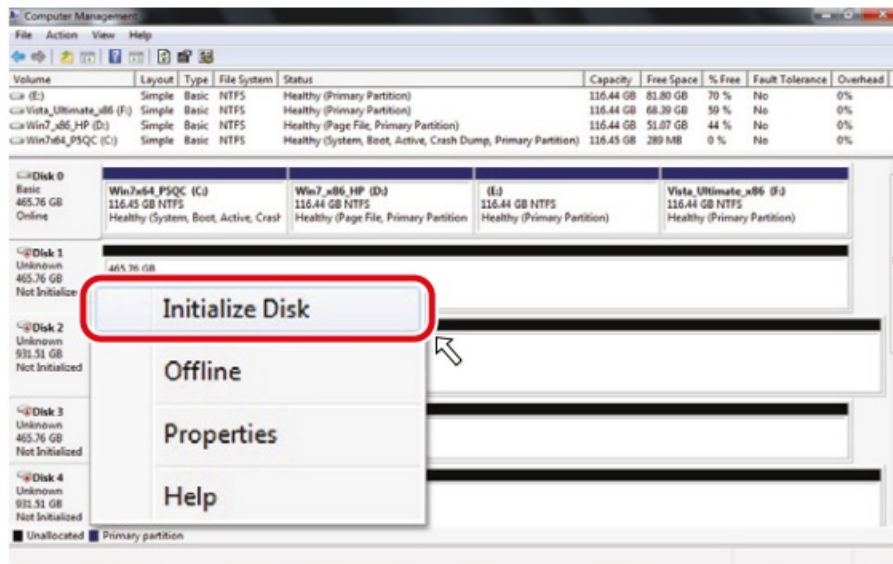
STEP 6 Initialization

MS Windows (32/64 bit)

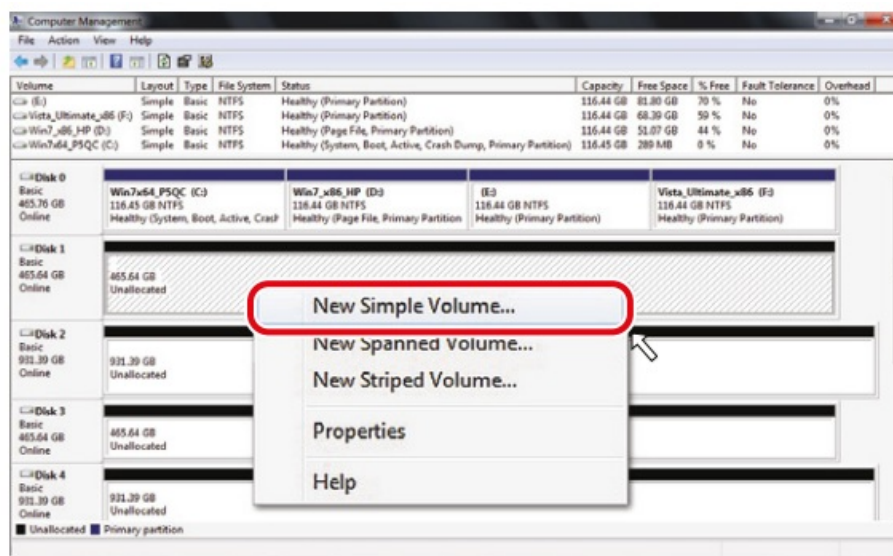
If the HDD is uninitialized, you may have to initialize it by doing steps as followed: At first click “Start” at your PC and key in “diskmgmt.msc”. After that please press “OK” key.



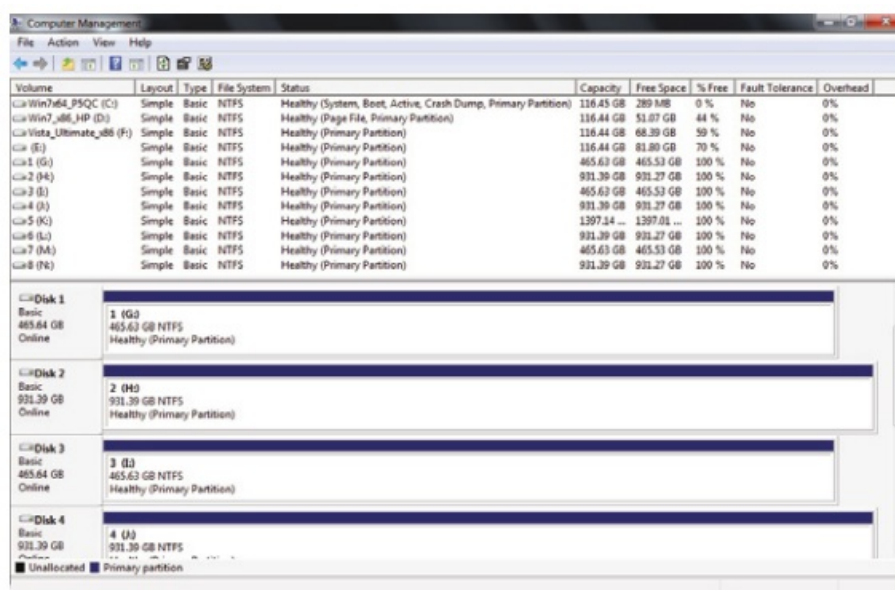
1. Start disk initialization.



2. Create new partition and format disk.



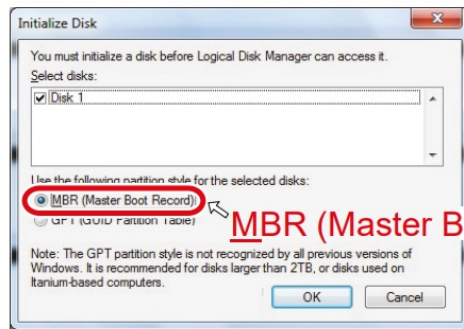
3. HDD format completed.



Start disk initialization.

Note: Please enable GPT (Vista/7) if the total capacity is more than 2TB and enable MBR if the total capacity is less than 2TB.

Activate MBR if total volume is less than 2TB



MBR (Master Boot Record)

Activate GPT if total volume is more than 2TB



GPT (GUID Partition Table)

Mac OS X 10.5 or later

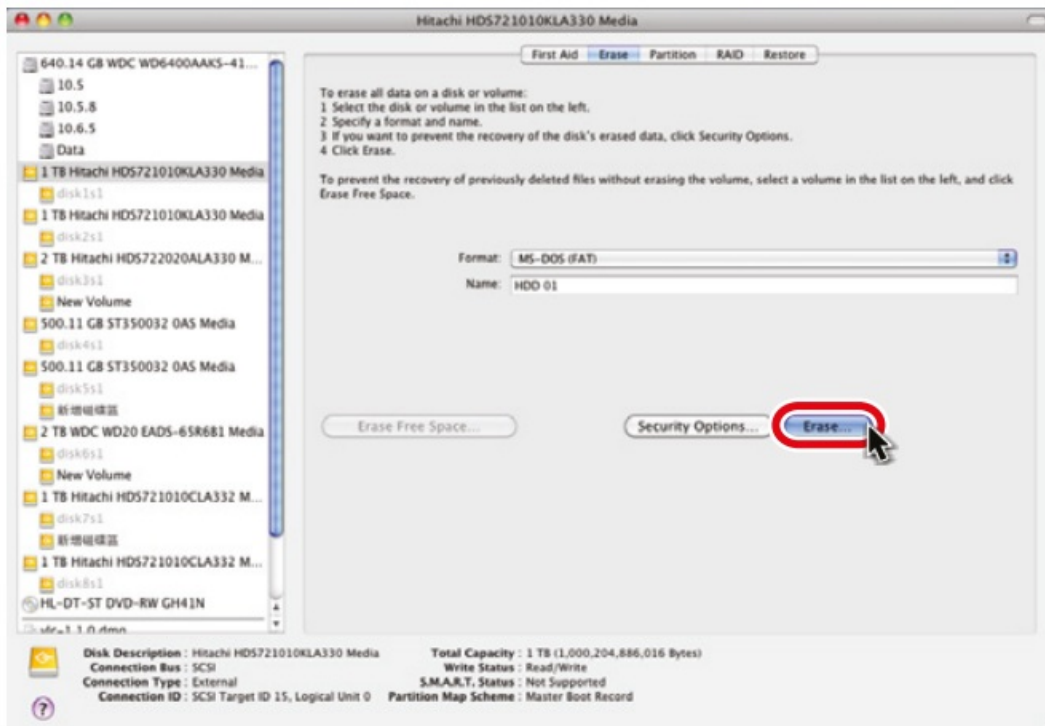
1. Click on Programs > Utility > Disk Utility icon.



2. HDD initialize...



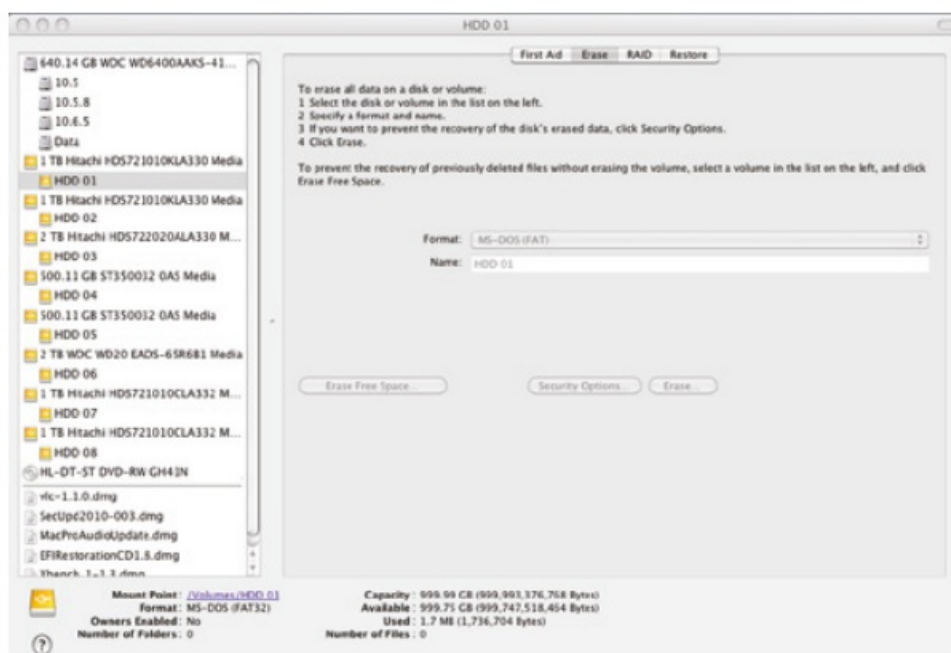
3. Click Erase



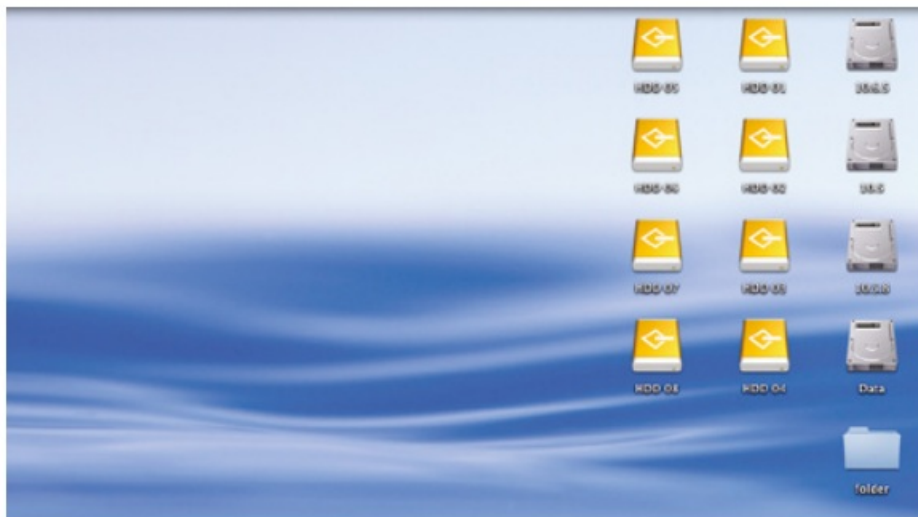
4. Click Erase



5. HDD format in process

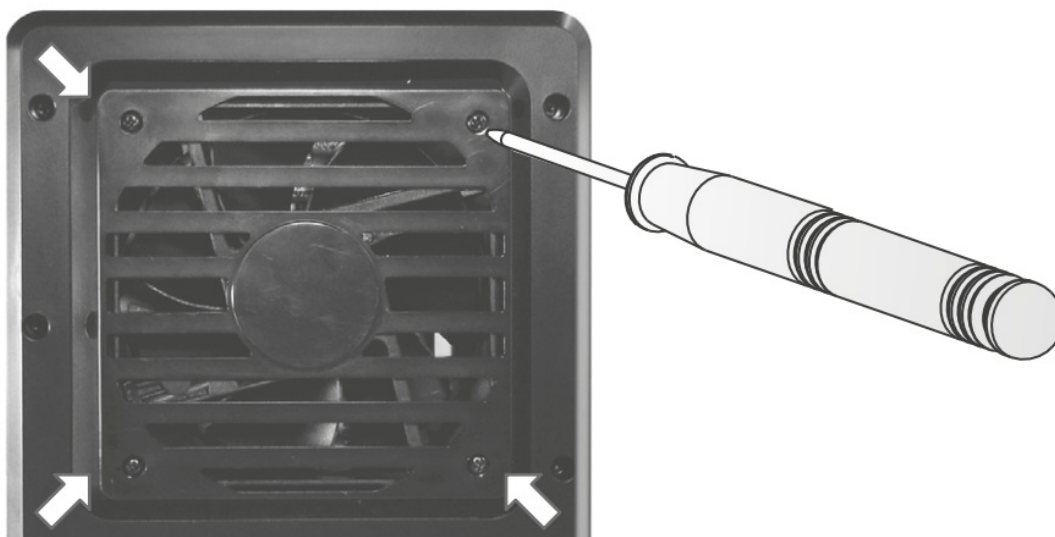


6. Format completed

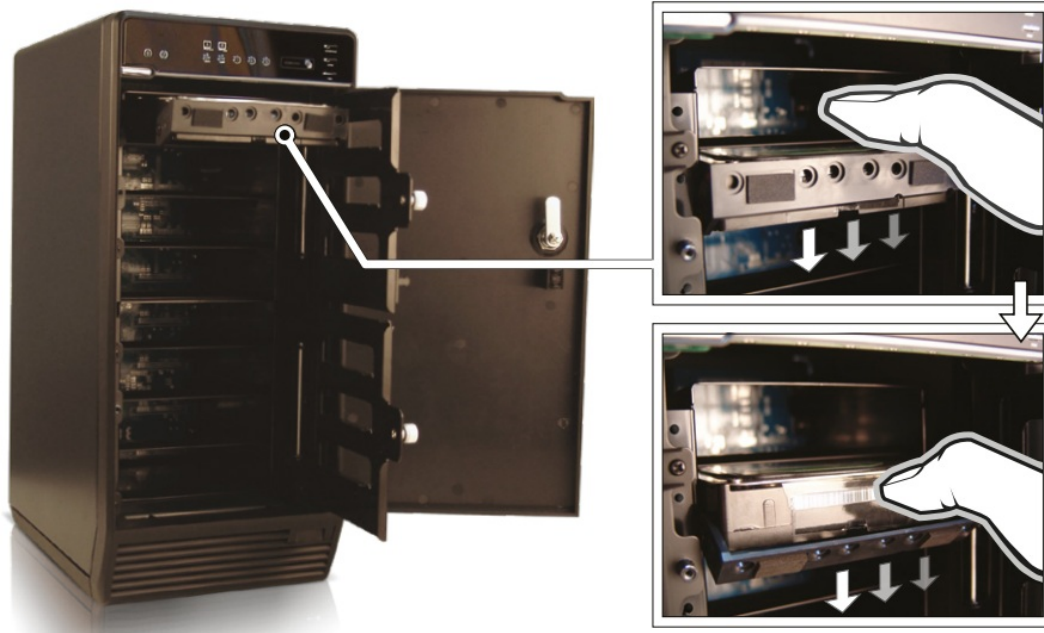


STEP 7 Trouble Shooting

1. If the FANTEC QB-X8US3-6G (2-8 HDDs installed) is connected to the PC with eSATA cable and the PC does not recognize these 4 SATA HDDs, please check if the eSATA controller supports Port Multiplier or update the eSATA driver version.
2. If the FANTEC QB-X8US3-6G (2-8 HDDs installed) takes too long to initialize, please check if the HDD is securely installed or update the eSATA driver version (for the housing are no drivers necessary!).
3. If the transfer rate seems to be too low, please check if the SATA HDD jumper is set up in 1.5 or 3.0 Gbps.
4. If there is noise with the fan, unscrew the fan, take out the cover, clean the fan and assemble it back.



5. To take the HDD out of the device, slightly press down the handle and pull it out.



Address for warranty return shipments:

FANTEC GmbH
Department RMA/Service
Billwerder Billdeich 605B
21033 Hamburg Germany

Declaration of conformity:

<http://www.fantec.de/unternehmen/bestimmungenrichtlinien/ce/>



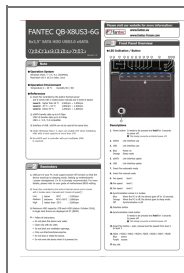
www.fantec.com • www.fantec-forum.com



service@fantec.de







Documents / Resources



[fantec QB-X8US3-6G Hard Drive Array](#) [pdf] Installation Guide
QB-X8US3-6G Hard Drive Array, QB-X8US3-6G, Hard Drive Array, Drive Array, Array

References

-  Manual-Hub.com - Free PDF manuals!
-  fantec-forum.com

-  [Homepage](#)
-  [CE](#)
-  [The domain name Fantec.eu is for sale!](#)
-  [Manual-Hub.com - Free PDF manuals!](#)
- [User Manual](#)

Manuals+, Privacy Policy

This website is an independent publication and is neither affiliated with nor endorsed by any of the trademark owners. The "Bluetooth®" word mark and logos are registered trademarks owned by Bluetooth SIG, Inc. The "Wi-Fi®" word mark and logos are registered trademarks owned by the Wi-Fi Alliance. Any use of these marks on this website does not imply any affiliation with or endorsement.