



FANTECH MK855 Maxfit108 Mechanical Keyboard Instruction Manual

[Home](#) » [fantech](#) » FANTECH MK855 Maxfit108 Mechanical Keyboard Instruction Manual 



MAXFIT108 MECHANICAL KEYBOARD

What's included in the box

1. Fantech MAXFIT108 mechanical keyboard
2. Keycaps plugger
3. Detachable Type-C cable
4. User Manual

System requirements

1. Operating systems: Windows XP/7/8/10: MAC OS
2. One free USB 2.0/3.0 port

Contents

- [1 Instruction Manual ©](#)
- [2 Technical Specification ©](#)
- [3 Keys Function Map](#)
- [4 Software](#)
- [5 HOW to use](#)
- [6 HOW to connect](#)
- [7 Documents / Resources](#)
- [8 Related Posts](#)

Instruction Manual ©

Thank you for purchasing FANTECH MAXFIT108 MK855 Mechanical Keyboard. FANTECH MAXFIT108 MK855 is a plug-and-play USB interface mechanical switch keyboard, no need to install any driver for your first use.

Technical Specification ©

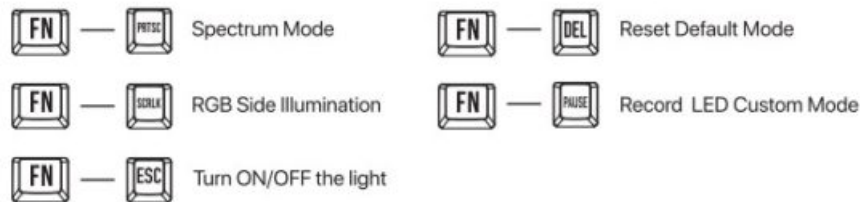
- Product Name: MAXFIT108 MK855 Mechanical Keyboard
- Number of keys: 108 keys
- Switch type: Mechanical
- Anti-Ghosting: All keys
- Size: 435(L) x 128(W) x 39(H)mm
- Weight: 967gr

Size



Keys Function Map

LIGHTING MODES

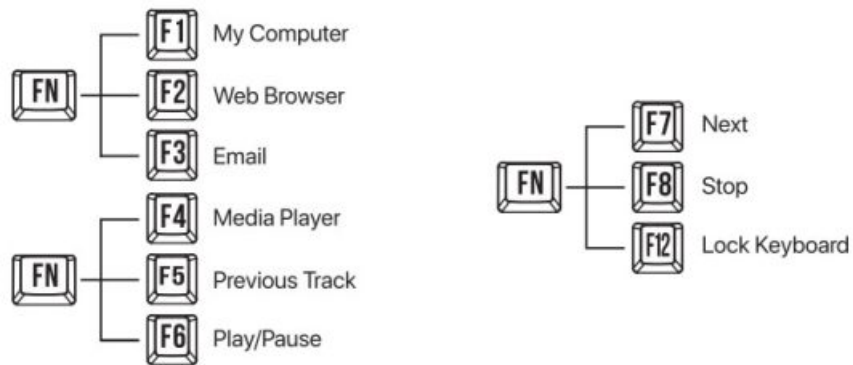


FN+ 9 & 0 are LED custom mode. To record, press FN+9 then press FN+PAUSE, recording starts after you press FN+PAUSE Press the selected buttons and press FN+PAUSE again to end the recording.

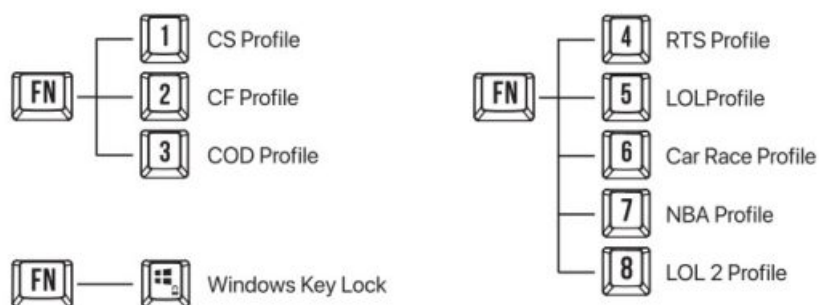
ADJUSTING LED BRIGHTNESS AND SPEED



MULTIMEDIA



GAME MODES

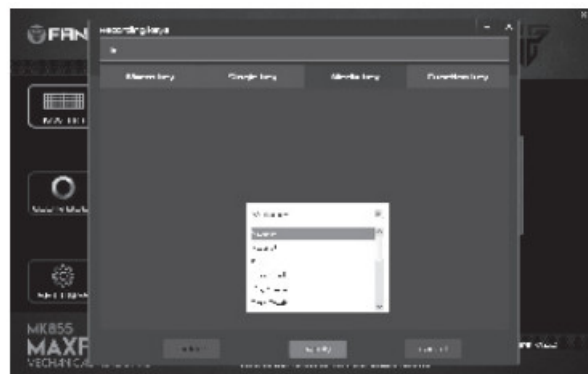


Download our Manual I Software from our official website www.fantechworld.com



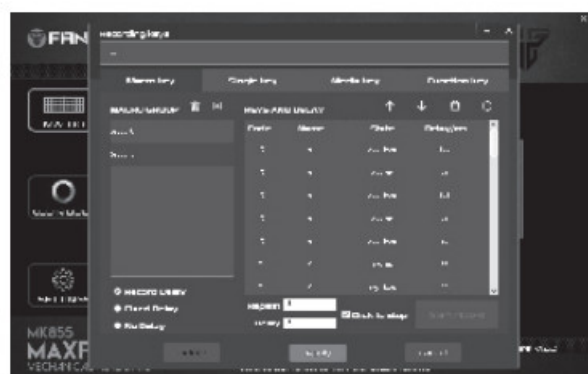
Software

Customize



- Select the macro bar, then select the key to be customized
- You can choose either macro key, single key, media key, or function key.
- After choosing your desired function, press apply

Macro Editor



- To make a new macro, select the macro bar, then select the key to be customized
- Make a macro group by pressing + bar " You can choose the delay time either record delay, fixed delay, no delay

- Press “start record” then input the action * To save, press stop record and press apply button to save your macro, then the macro is ready to be used.

LED Mode



- You can select up to 20 preset illumination modes.
- You can customize the illumination speed and the brightness.

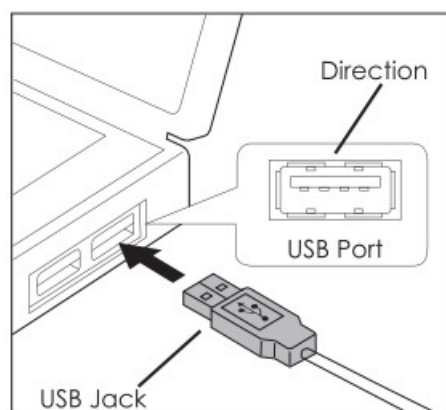
HOW to use



Indicator light

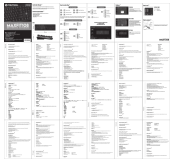
- N — Num lock
- C — Caps lock
- W — Windows lock

HOW to connect



It's plug-and-play. Connect the keyboard to the computer by inserting USBBack to your computer USB pon

Documents / Resources



[FANTECH MK855 Maxfit108 Mechanical Keyboard](#) [pdf] Instruction Manual
MK855, Maxfit108 Mechanical Keyboard