



FANTECH Maxfit108 Mechanical Keyboard Instruction Manual

[Home](#) » [fantech](#) » FANTECH Maxfit108 Mechanical Keyboard Instruction Manual 

Contents

- [1 FANTECH Maxfit108 Mechanical Keyboard](#)
- [2 Size](#)
- [3 Keys Function Map](#)
- [4 Software](#)
- [5 Documents / Resources](#)
 - [5.1 References](#)
- [6 Related Posts](#)



FANTECH Maxfit108 Mechanical Keyboard



What's included in the box

1. Fantech MAXFIT108 mechanical keyboard

2. Keycaps plugger
3. Detachable Type-C cable
4. User Manual

System requirements

1. Operating systems: Windows XP/7/8/10: MAC OS
2. One free USB 2.0/3.0 port

Instruction Manual

Thankyou for purchasing FANTECH MAXFIT108 MK892 Mechanical Keyboard.

FANTECH MAXFIT108 MK892 is a plug and play USB interface mechanical switch keyboard, no need to Install any driver for your first use.

Technical Specification











- Product Name: MAXFIT108 MK892 Mechanical Keyboard
- Number of keys: 108 keys
- Switch type: Mechanical
- Anti-Ghosting: All keys
- Size: 435(L)x127.8 (W)x39(H)mm
- Weight: 967gr

Size



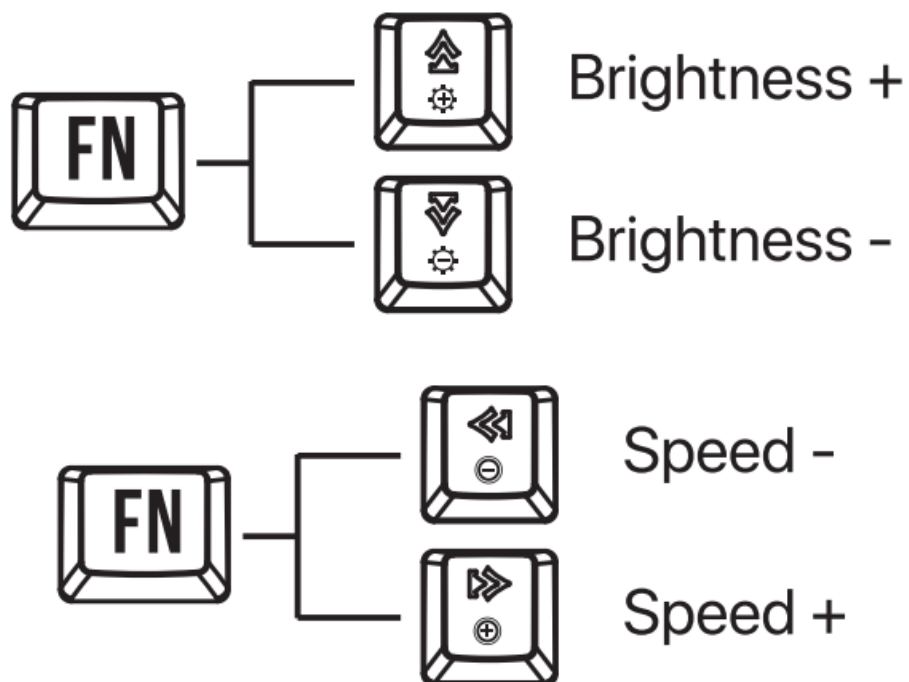
Keys Function Map

LIGHTING MODES

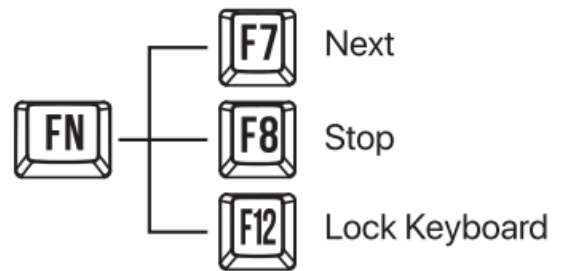
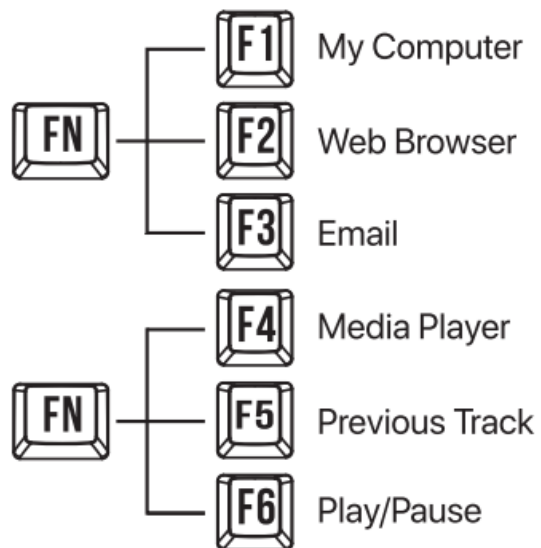
-  —  Spectrum Mode
-  —  RGB Side Illumination
-  —  Turn ON/OFF the light
-  —  Reset Default Mode
-  —  Record LEDCustomMode

FN+ 9 & 0 are LED custom mode. To record, press FN+9 then press FN+PAUSE, recording start after you press FN+PAUSE. Press the selected buttons and press FN+PAUSE again to end the recording.

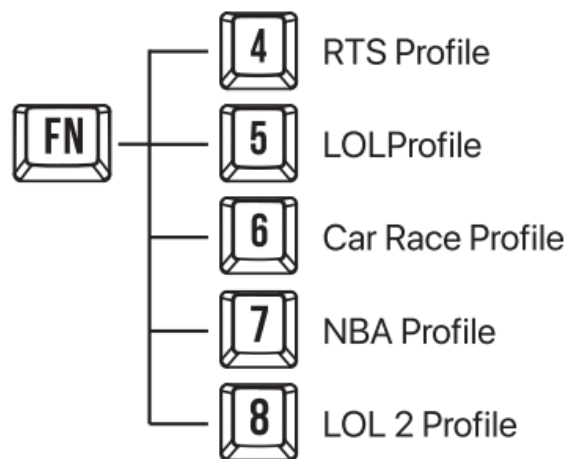
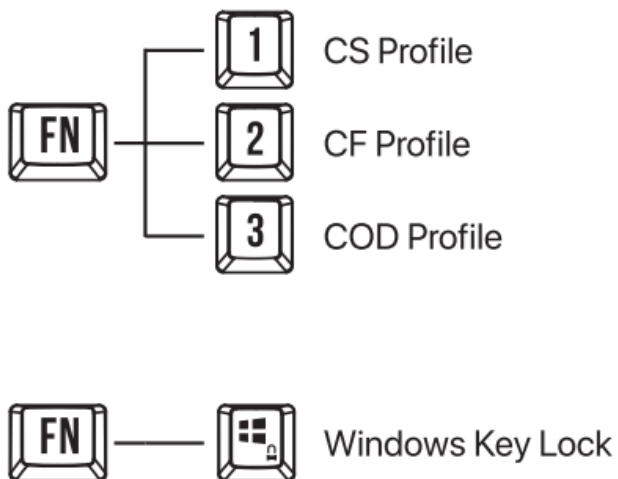
ADJUSTING LED BRIGHTNESS AND SPEED



MULTIMEDIA



GAME MODES

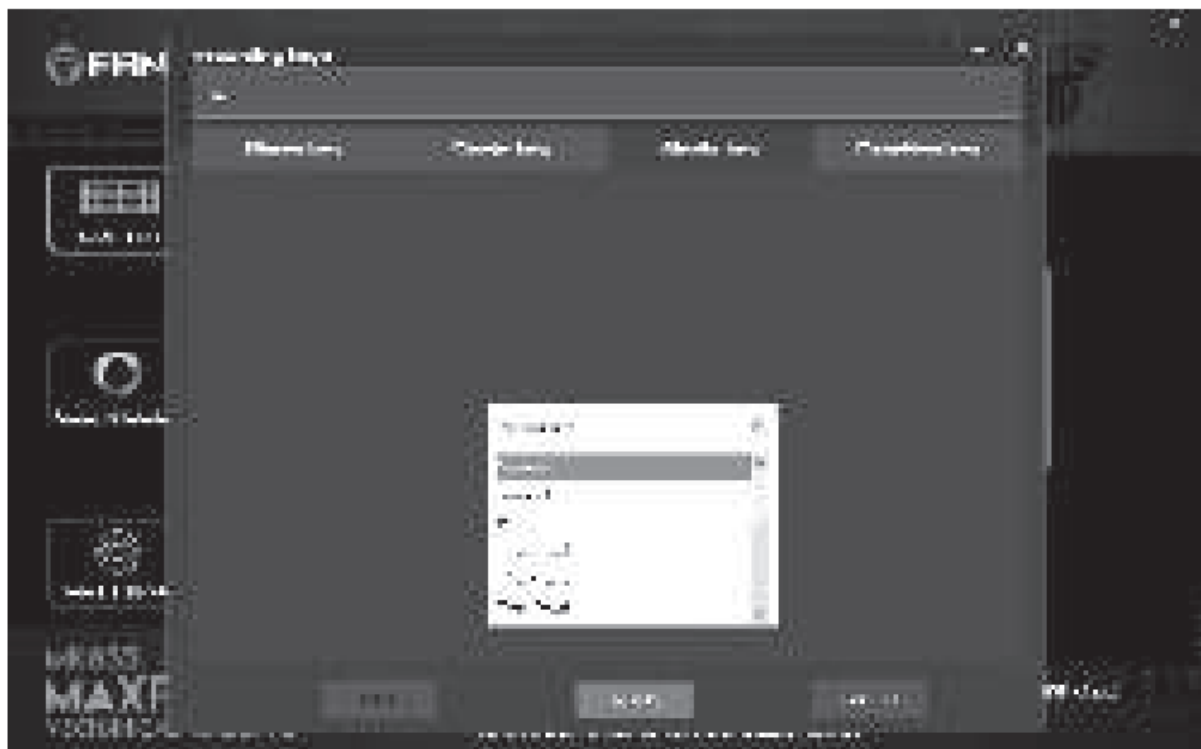


Download our Manual / Software from our official website www.fantechworld.com



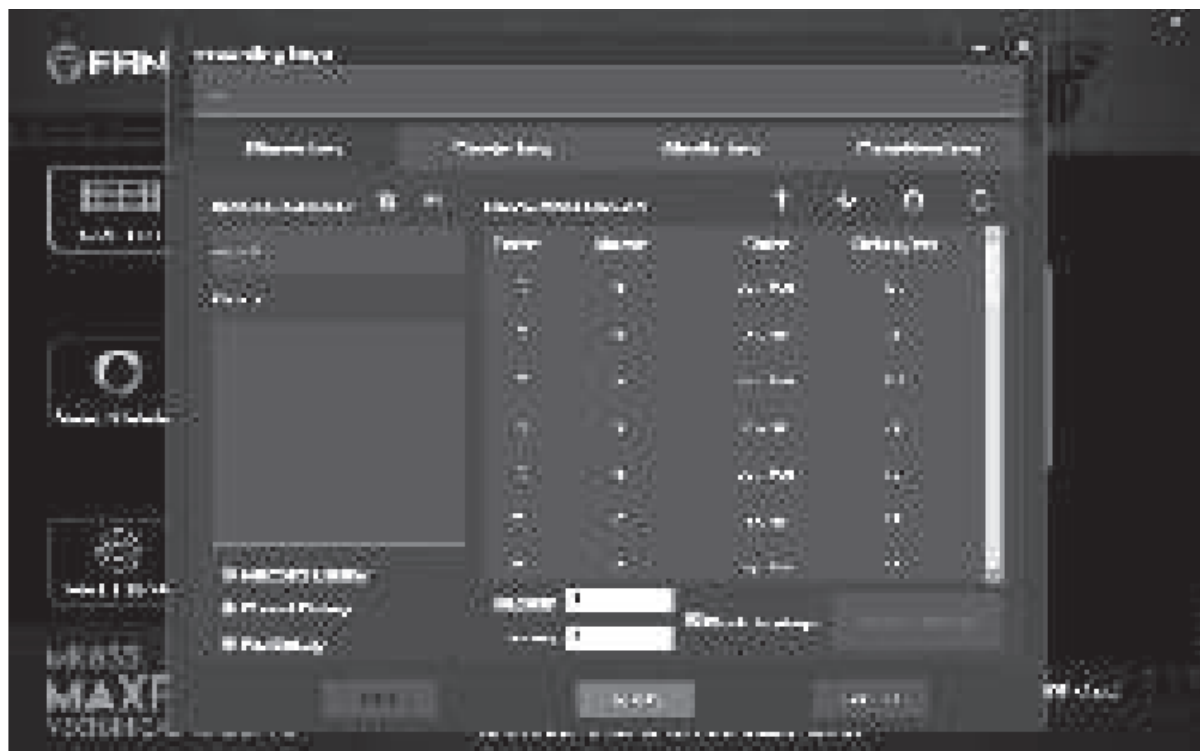
Software

Customize



- Select the macro bar, then select the key to be customized
- You can choose either macro key, single key, media key, and function key.
- After choosing your desire function, press apply

Macro Editor



- To make a new macro, select the macro bar, then select the key to be customized
- Make a macro group by pressing + bar
- You can choose the delay time either record delay, fixed delay, no delay
- Press “start record” then input the action
- To save, press stop record and press apply button to save your macro, then the macro is ready to be used.

LED Mode



- You can select up to 20 preset illumination mode.
- You can customize the illumination speed and the brightness.

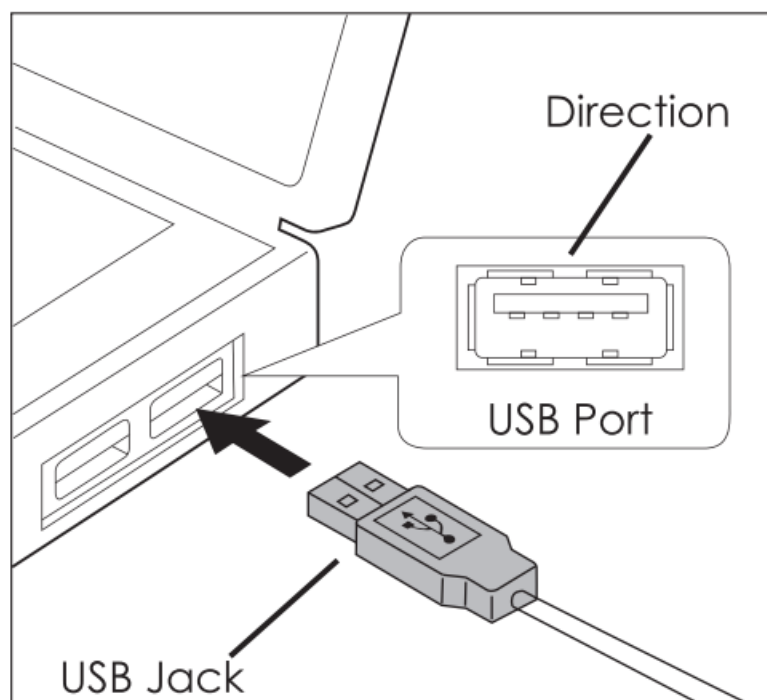
How to use



Indicator light

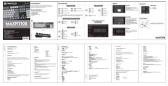
- N– Num lock
- C — Caps lock
- W– Windows lock

How to connect



It's plug and play. Connect the keyboard to computer by inserting USB jack to your computer USB port

Documents / Resources



[FANTECH Maxfit108 Mechanical Keyboard](#) [pdf] Instruction Manual
Maxfit108, Maxfit108 Mechanical Keyboard, Mechanical Keyboard, Keyboard

References

- [User Manual](#)

[Manuals+](#), [Privacy Policy](#)

This website is an independent publication and is neither affiliated with nor endorsed by any of the trademark owners. The "Bluetooth®" word mark and logos are registered trademarks owned by Bluetooth SIG, Inc. The "Wi-Fi®" word mark and logos are registered trademarks owned by the Wi-Fi Alliance. Any use of these marks on this website does not imply any affiliation with or endorsement.