

FANCY LEDS Fancy Triangles Sensitive Rgb Wifi Smart Lighting User Manual

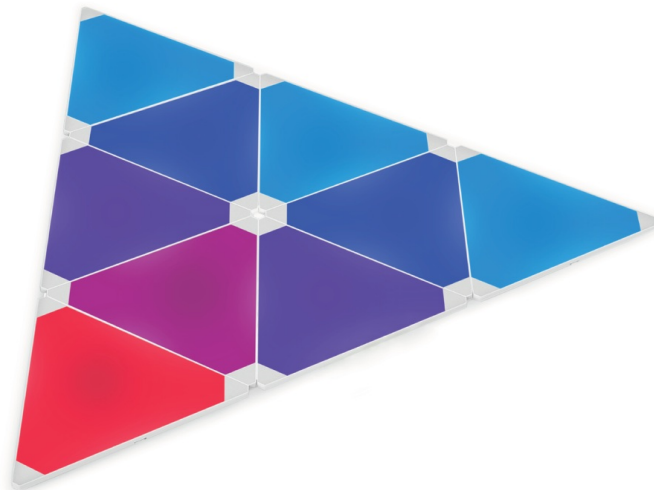
[Home](#) » [FANCY LEDS](#) » FANCY LEDS Fancy Triangles Sensitive Rgb Wifi Smart Lighting User Manual 

Contents

- [1 FANCY LEDS Fancy Triangles Sensitive Rgb Wifi Smart Lighting](#)
- [2 Product Information](#)
- [3 Product Usage Instructions](#)
- [4 Included Items](#)
- [5 Installation](#)
- [6 App & WiFi Setup](#)
- [7 Sync Orientation](#)
- [8 FAQ](#)
- [9 Documents / Resources](#)



FANCY LEDS Fancy Triangles Sensitive Rgb Wifi Smart Lighting



Product Information

The Fancy Triangles is a lighting system that allows you to create patterns and designs on a flat surface in your room. It comes with several items included:

1. Fancy Triangles – the main lighting panels
2. Control Box – used to connect and control the lighting system
3. Connector Clips – used to connect the triangles together
4. USB-C Cable – connects the control box to the triangles
5. Power Adaptor – provides power to the system

Product Usage Instructions

Installation

1. Preparing The Installation Area:
 1. Identify a flat surface in your room for installation.
 2. Ensure the surface is clean and free of dust.
2. Installing The First Triangle:
 1. Choose the starting point for your design.
 2. Place the first Fancy Triangle at the starting point using the provided adhesive pads.
 3. Ensure the panel is straight and level.
 4. Note the position of the triangles relative to the TV if synchronization is desired.
3. Connecting The Control Box:
 1. Connect the USB-C cable into the control box.
 2. Connect the other end of the cable with the connector clip into one of the three ports on the Fancy Triangle.
 3. Make sure the arrows on the connector clip are facing towards you as you make the connection.
 4. Ensure the cable is securely connected to the port.
4. Connecting Subsequent Triangles:

1. Position the remaining triangles around the first one, considering the directional connector clips.
 2. Connect each triangle to the last one installed, ensuring the arrows on the connector clips are facing towards you as you make the connection.
 3. Once connected, the clip will be fully inserted and won't be visible between the panels.
5. Powering Up the System:
1. Connect the Power Adaptor cord into the control box.
 2. Plug the power plug into a power socket.

App & WiFi Setup

6. Installing the Fancy LED App:
1. Download the Fancy LEDs app from your phone's app store.
7. Connecting to WiFi:
1. Ensure your phone is connected to a 2.4 GHz WiFi connection.
 2. Activate Bluetooth and location settings.
 3. In the app, click on the blue + icon at the top right corner and select 'Add Device'.
8. WiFi Issues:
1. If experiencing connection issues, try deleting the Fancy Triangle icon in the app, disconnecting and reconnecting the power cable from the control box, and pressing and holding the button on the control box for 5 to 10 seconds until the Triangles begin flashing.

Sync Orientation

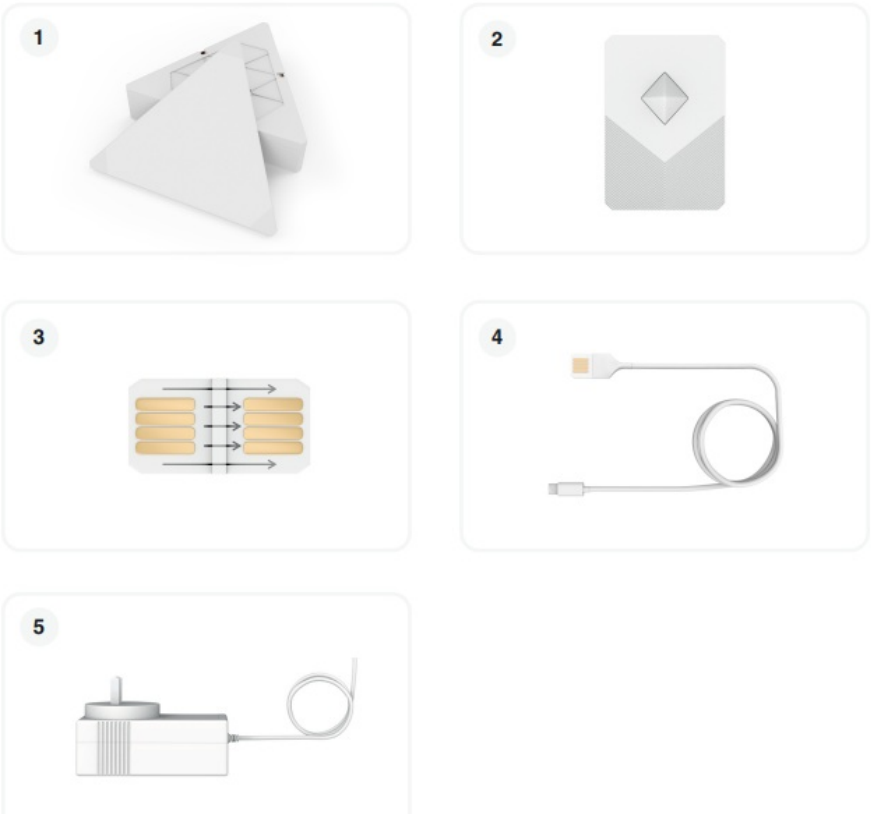
9. Synchronizing with Your TV:
1. If you own a Fancy Sync Box (sold separately, models purchased after 1/1/2023), you can link your Fancy Triangles with your TV.
 2. In the app, go to the Synchronize page and select the option that suits the position of the Triangles relative to the control box and the direction.

FAQ

My phone will not connect to the app.

Confirm you have a 2.4 GHz WiFi connection (confirm with modem manufacturer).

Included Items



Item		Quantity
1.	Fancy Triangles	9
2.	Control Box	1
3.	Connector Clips	9
4.	USB-C Cable	1
5.	Power Adaptor	1

Installation

Preparing The Installation Area

Identify a flat surface in your room where you'd like to install the Fancy Triangles and the pattern you'd like to create. Ensure this surface is clean and free of dust.

Installing The First Triangle

Choose the starting point for your design and place the first Fancy Triangle there, using the provided adhesive pads. It is recommended you make sure this panel is straight / level. It is important to keep in mind the position of the Triangles relative to the TV, if you plan on synchronising (See page 5 for Sync Orientation information).

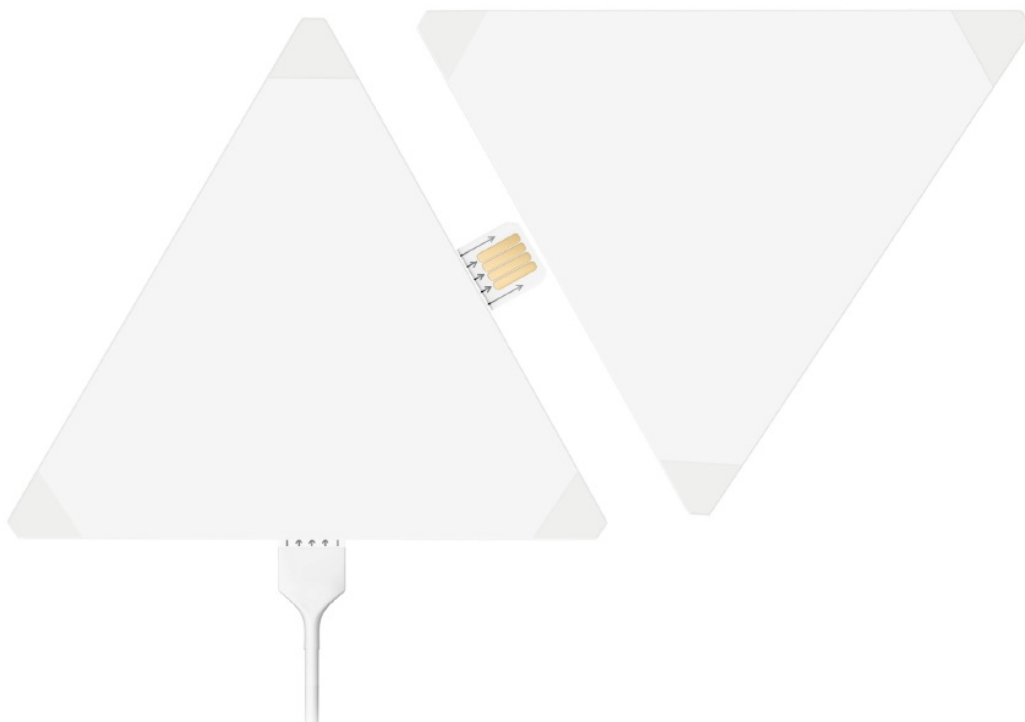
Connecting The Control Box

Connect the provided USB-C cable into the control box, and the other end with the connector clip into one of the three ports on the Fancy Triangle. The cable connector clip has arrows that should be facing towards you as you make the connection, not towards the wall. Make sure the cable is securely connected into the port.



Connecting Subsequent Triangles

One by one, position the remaining triangles around the first, keeping in mind the directional connector clips. When connecting each triangle to the last one installed, ensure the arrows on the connector clips are facing towards you as you make the connection. These arrows indicate the direction to the next panel. Once connected into the port, the clip will be fully inserted and won't be visible, as it will be between the panels.



Powering Up the System

Once all triangles are connected, plug in the Power Adaptor cord into the control box and the power plug into a power socket.

App & WiFi Setup

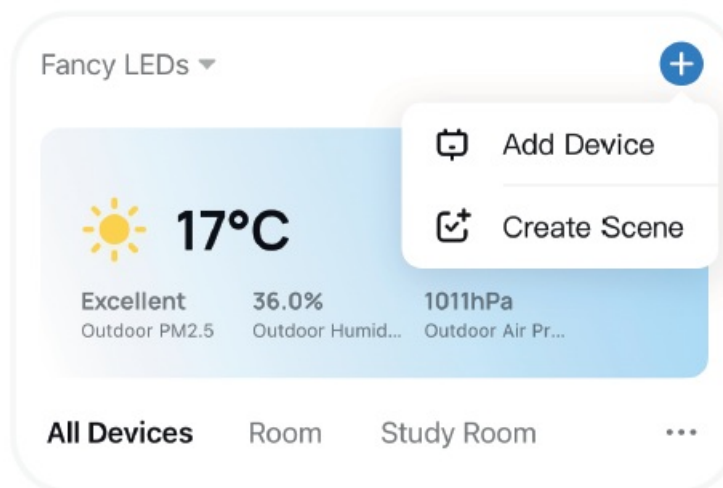
Installing the Fancy LED App

Download the Fancy LEDs app from your phone's app store:



Connecting to WiFi:

Ensure your phone is connected to a 2.4 GHz WiFi connection & that both Bluetooth & location settings are activated. Click on the blue + icon at the top right corner of the app and select 'Add Device'.



WiFi Issues

If you are having connection issues, try the following steps: In the Fancy LEDs app, hold down the Fancy Triangle icon to delete it. Then, disconnect and reconnect the power cable from the control box. Lastly, press and hold the button on the control box for 5 to 10 seconds until the Triangles begin flashing.

Voice Control

Upon completion of the setup, navigate to your voice control device's app and search for 'Tuya'. Tuya is the platform that enables voice control compatibility.



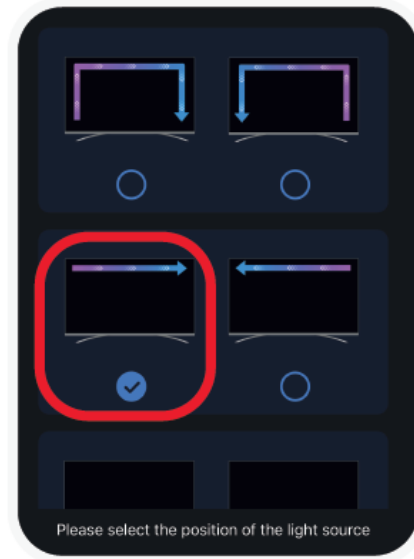
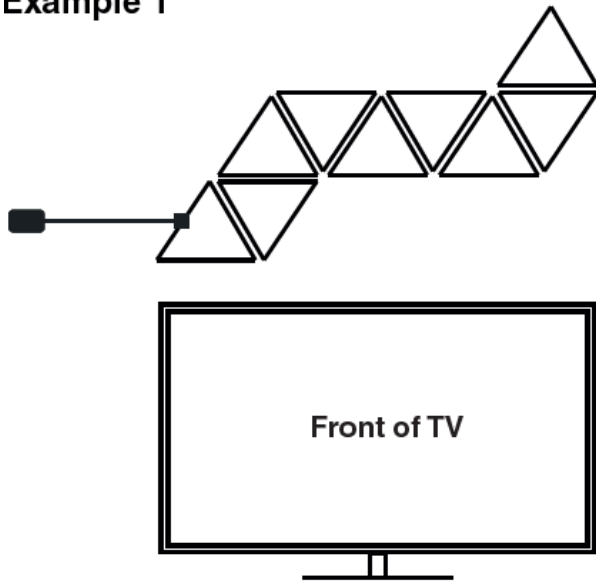
Sync Orientation

Synchronizing with Your TV

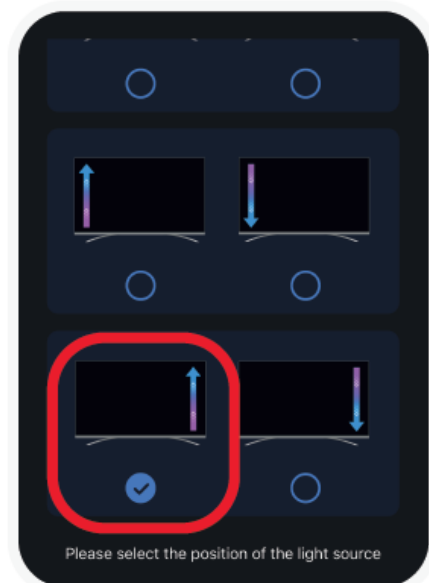
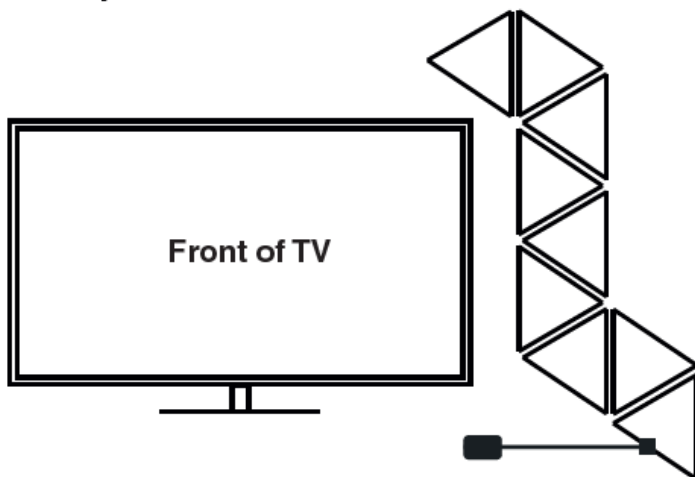
If you own a Fancy Sync Box (sold separately, models purchased after 1/1/2023), you can link your Fancy Triangles with your TV. Head to the Synchronize page in-app and select the option which most suits the position

of the Fancy Triangles. The beginning of the arrow in the app screenshot below, indicates the starting position of the Triangles with regards to the control box and the direction.

Example 1



Example 2



FAQ

My phone will not connect to the app?

- Confirm you have a 2.4 GHz WiFi connection (confirm with modem manufacturer).
- Check the app permissions in the settings of your phone & enable locations, WiFi & Bluetooth.
- Remove the Fancy Triangle icon from the app.
- Remove the power cord, wait for 5 seconds, reinsert, then hold down the control box button for 10 seconds to reset.
- If it still does not connect, reattempt the steps above using a different mobile device or tablet.

Do I need a cable to connect the Fancy Triangles to the Fancy Sync Box?

No, the Fancy Triangles and Fancy Sync Box sync wirelessly via the app. They need to be both connected to the

same WiFi network.

Why are my Fancy Triangles not syncing to the TV?

Make sure that your Fancy Sync Box is powered on and connected to the same WiFi network as your Fancy Triangles. You can use the Fancy LEDs app to manage this connection. If the syncing issue persists, try the WiFi reset instructions for the Fancy Triangles detailed on page 4, step 7 of the instruction manual.

Why aren't some Triangles at the end of my sequence lighting up?

If you have powered on the Fancy Triangles before connecting all of them, the system will only recognize the initially connected triangles. For instance, if you power on the system with 4 triangles connected and then add the remaining 5 triangles, the newly added triangles won't light up. In this case, you need to reset the Fancy Triangles. Disconnect the power cord, wait for 5 seconds, then reconnect it and hold down the WiFi reset button.

Why aren't some Triangles at the end of my sequence lighting up even though I didn't power on initially?

If some triangles are not lighting up, it's possible that the connector clips may not have been connected correctly. It's important to ensure that the arrows on the connector clips are facing you and not against the wall, when setting up your Fancy Triangles. Please refer back to page 3, step 4 of the instruction manual, for detailed instructions on connecting the triangles properly.

Why are the Triangles syncing to the opposite side of the TV?

Please refer to page 5 of the instruction manual and confirm the orientation mode you have selected for your Fancy Triangles.

Why do my Triangles keep falling off the wall?


Ensure that the adhesive pads are clean and free of any dirt or dust. Please note that moving the Triangles after the initial setup may weaken the adhesive's grip on the wall.

How can I contact support?

You can contact support via email: help@fancyleds.com

You can also access the extended FAQ by scanning the QR code below:



	<p>FANCY LEDS Fancy Triangles Sensitive Rgb Wifi Smart Lighting [pdf] User Manual</p> <p>Fancy Triangles Sensitive Rgb Wifi Smart Lighting, Fancy Triangles, Sensitive Rgb Wifi Smart Lighting, Rgb Wifi Smart Lighting, Smart Lighting, Lighting</p>
---	---